





YveYANG presents a two-person booth with Raphael Egil and Kim Stolz at Independent 2026. The presentation takes the brushstroke as a measure—not simply of gesture, but of duration held under constraint. Each mark registers a limit: how far it can be sustained, where it yields, and what lingers in excess or reserve.

Egil's paintings unfold through extension. The line advances beyond compositional necessity, carrying time forward until it begins to thicken, to hum, to verge on saturation. At certain thresholds, the stroke gathers into provisional forms—trees, horizons, figures—only to disperse again into the same continuous field. Continuity here is not ease but pressure—an insistence that tests the point at which persistence risks dispersal. Stolz, by contrast, works through interruption. Her marks resolve early, held at the edge of completion, where withdrawal becomes generative. What is withheld structures the surface: intervals, suspensions, quiet returns.

Together, the works define a shared field of regulation. Painting appears here as a system of limits in motion, where extension and arrest are not opposites but reciprocal conditions. Each gesture is calibrated against its own threshold, each surface a site where duration is portioned, restrained, and released.

Within this field, color operates as frequency rather than description. It gathers and disperses intensity, establishing zones that vibrate, settle, or fall just out of reach. Color does not fix the image; it tunes it—holding certain passages in resonance while allowing others to recede into a lower register. The eye is carried, then slowed, then held in suspension.

The presentation does not resolve the tension between these approaches. Instead, it sustains it. Across both practices, painting is understood as a process of attunement—of sensing when to continue, when to stop, and how to remain within that unstable interval where a work holds together. The brushstroke, in this sense, is neither purely expressive nor purely formal; it is a measure that moves, a line that listens as much as it advances.

Index

Booth 506



Raphael Egil
Paradise Hand
2026
Oil and tempera on canvas
63 x 55½ in.
160 x 140 cm
\$ 22,000



Raphael Egil
Under the Sun
2026
Oil and tempera on canvas
63 x 55½ in.
160 x 140 cm
\$ 22,000



Raphael Egil
Sitzplatz
2020
Oil and tempera on canvas
74¾ x 63 in.
190 x 160 cm
\$ 25,000



Raphael Egil
Horsemen
2026
Oil and tempera on canvas
39¾ x 51¾ in.
100 x 130 cm
\$ 19,600



Raphael Egil
Horsemen
2026
Oil and tempera on canvas
39¾ x 51¾ in.
100 x 130 cm
\$ 19,600



Raphael Egil
Ride
2026
Oil and tempera on canvas
39¾ x 51¾ in.
100 x 130 cm
\$ 19,600



Raphael Egil
Flower Landscape
2026
Oil and tempera on canvas
31½ x 45¼ in.
80 x 115 cm
\$ 16,600



Raphael Egil
Colourful Sun
2025
Oil and tempera on canvas
35¾ x 27½ in.
90 x 70 cm.
\$ 9,500



Raphael Egil
Colourful Sun
2025
Oil and tempera on canvas
35¾ x 27½ in.
90 x 70 cm.
\$ 9,500



Raphael Egil
Trees
2025
Oil and tempera on canvas
15¾ x 20¾ in.
39 x 51 cm
\$ 6,800



Raphael Egil
Trees
2025
Oil and tempera on canvas
15¾ x 20¾ in.
39 x 51 cm
\$ 6,800



Kim Stolz
13:42
2025
Watercolor on linen
8¼ x 11¾ in.
21 x 29 cm
\$ 4,000



Kim Stolz
12:23
2025
Watercolor and gouache on linen
19¼ x 15¼ in.
50 x 40 cm
\$ 6,000



Kim Stolz
12:14
2025
Gouache and graphite on linen
15¾ x 19¾ in.
40 x 50 cm
\$ 6,000



Kim Stolz
16:56
2025
Watercolor and gouache on linen
15¾ x 19¾ in.
40 x 50 cm
\$ 6,000



Kim Stolz
14:20
2026
Watercolor on linen
8¾ x 11¾ in.
21 x 29 cm
\$ 4,000



Kim Stolz
14:13
2026
Acrylic on jute
8¾ x 11¾ in.
21 x 29 cm
\$ 4,000



Kim Stolz
18:10
2025
Gouache, watercolor and graphite on linen
11¾ x 8¾ in.
29 x 21 cm
\$ 4,000



Raphael Egil (b. 1975, St. Gallen, Switzerland) currently lives and works outside of Lucerne, Switzerland, where he graduated from the Hochschule für Gestaltung und Kunst in 2000. His work has been presented in many exhibitions across Europe, as well as a series of solo exhibitions at Galerie Michael Werner in Cologne, Cassius&CO in London, and several museums including the Kornschütte in Lucerne, the Alpine Museum in Lucerne, the Nidwaldner Museum in Stans, and the Galerie Ermitage in Beckenried. Publications include *ab die Berge un aud in die Stadt*, *Green Hill Country Clouded*, *Zimmerblüten*, and *Raphael Egil*.

Raphael Egil

Paradise Hand

2026

Oil and tempera on canvas
63 x 55½ in.
160 x 140 cm

\$ 22,000





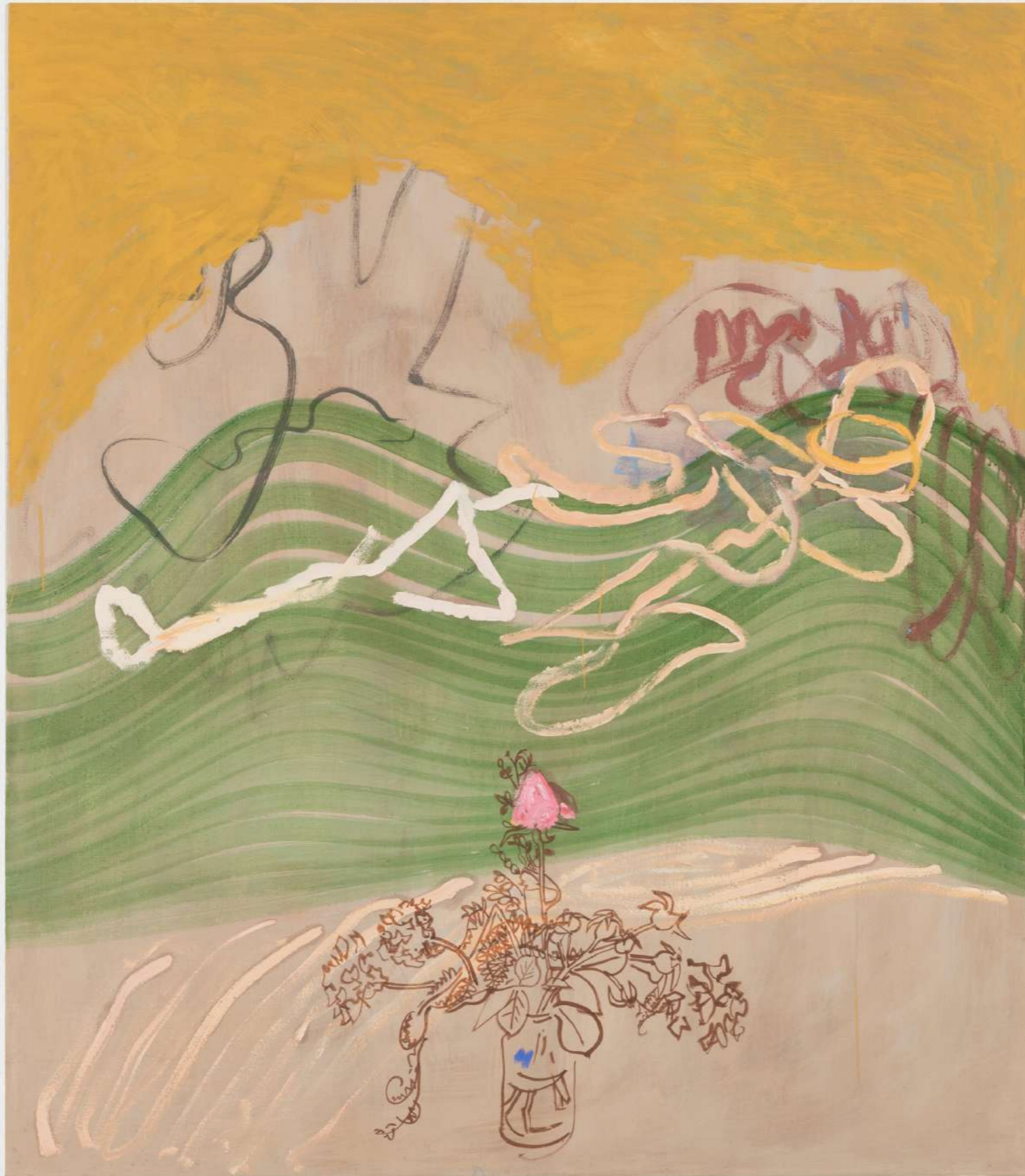
Raphael Egil

Under the Sun

2026

Oil and tempera on canvas
63 x 55½ in.
160 x 140 cm

\$ 22,000





Raphael Egil

Ride

2026

Oil and tempera on canvas
39³/₈ x 51¹/₈ in.
100 x 130 cm

\$ 19,600





Raphael Egil

Horsemen

2026
Oil and tempera on canvas
39³/₈ x 51¹/₈ in.
100 x 130 cm

\$ 19,600





Raphael Egil

Horsemen

2026
Oil and tempera on canvas
39 3/8 x 51 1/8 in.
100 x 130 cm

\$ 19,600





Raphael Egil

Flower Landscape

2026
Oil and tempera on canvas
31½ x 45¼ in.
80 x 115 cm

\$ 16,600





Raphael Egil

Colourful Sun

2025
Oil and tempera on canvas
35³/₈ x 27¹/₂ in.
90 x 70 cm

\$ 9,500



Raphael Egil

Colourful Sun

2025
Oil and tempera on canvas
35³/₈ x 27¹/₂ in.
90 x 70 cm

\$ 9,500



Raphael Egil

Trees

2025
Oil and tempera on canvas
15³/₈ x 20¹/₈ in.
39 x 51 cm

\$ 6,800



Raphael Egil

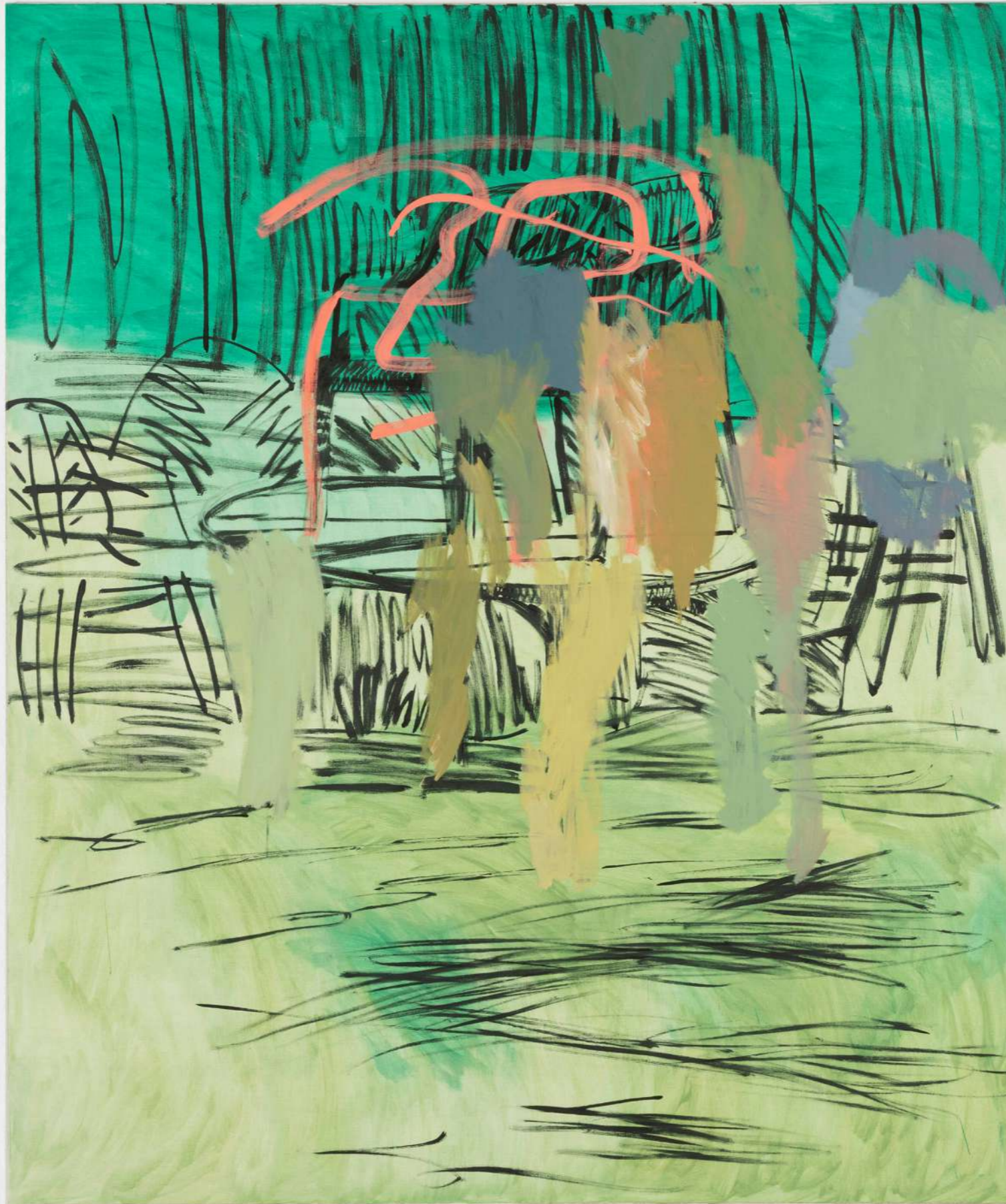
Trees

2025
Oil and tempera on canvas
15³/₈ x 20¹/₈ in.
39 x 51 cm

\$ 6,800



Raphael Egil



Sitzplatz

2020

Oil and tempera on canvas
74¾ x 63 in.
190 x 160 cm

\$ 25,000



Kim Stolz (b. 1995, Berlin, Germany) currently lives and works in Düsseldorf. In 2023, she earned a Meisterschüler diploma from the class of Professor Andreas Schulze at Düsseldorf Art Academy, where her graduation presentation was honored with the Academy's Jubilee Sponsorship Award. Recent solo and duo exhibitions include Kunsthalle Recklinghausen, Recklinghausen; Lucas Hirsch, Düsseldorf; YveYANG, New York; Linienstrasse 28, Düsseldorf; and Villa de Bank, Enschede. Her work has also been shown in group exhibitions at Kunstmuseum Solingen; Kunstakademie, BBK Düsseldorf; and Super Super Markt, Cologne and Berlin. Stolz has exhibited across Germany, the Netherlands, and the United States.



Kim Stolz

14:13

2025

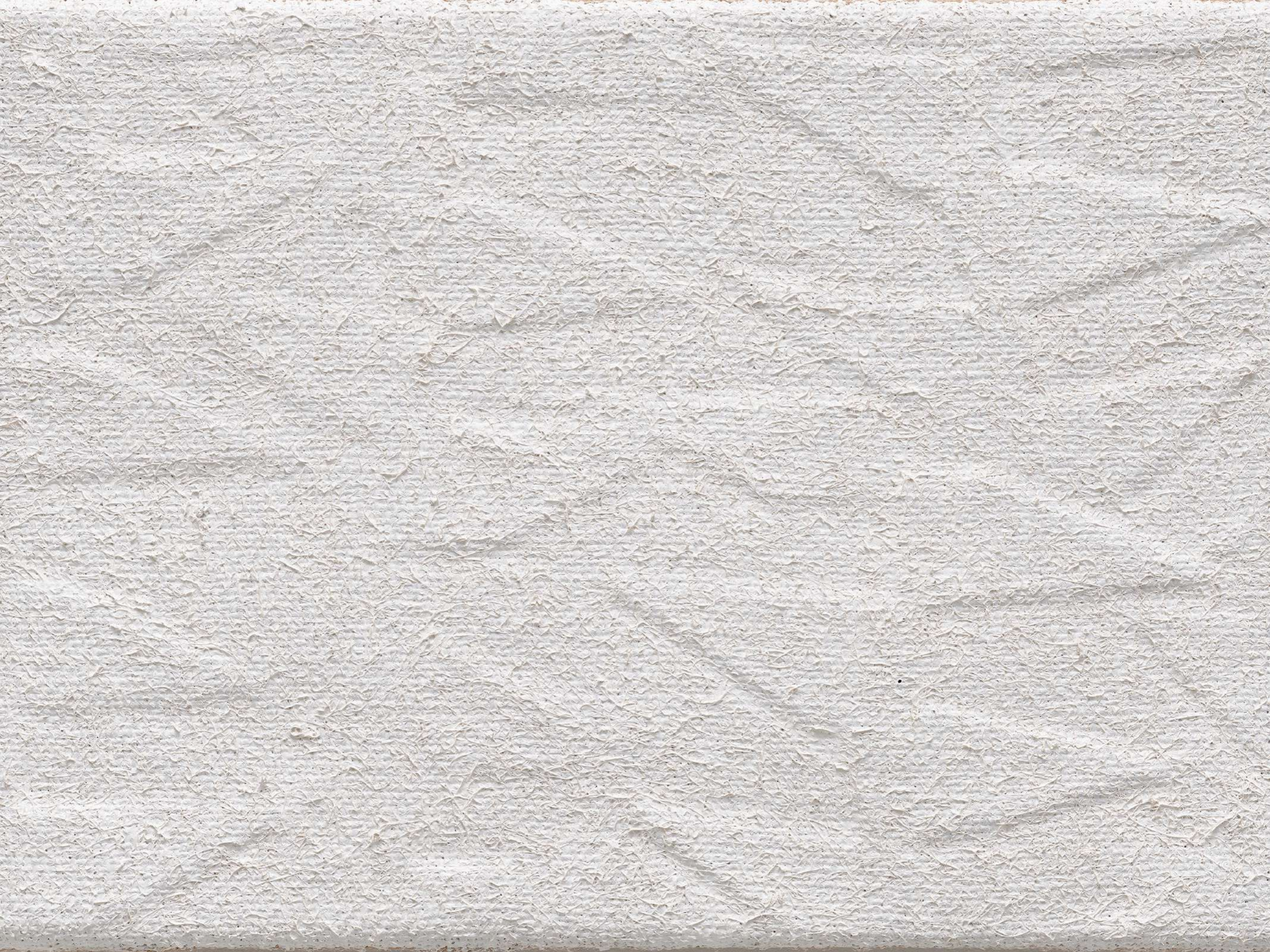
Acrylic on jute

8¼ x 11¾ in.

21 x 29 cm

\$ 4,000





Kim Stolz

12:14

2025

Gouache and graphite on linen
15³/₄ x 19³/₄ in.
40 x 50 cm

Reserved





Kim Stolz

16:56

2025

Watercolor and gouache on linen

15¾ x 19¾ in.

40 x 50 cm

\$ 6,000





Kim Stolz

12:23

2025

Watercolor and gouache on linen

19³/₄ x 15³/₄ in.

50 x 40 cm

\$ 6,000





Kim Stolz

13:42

2025

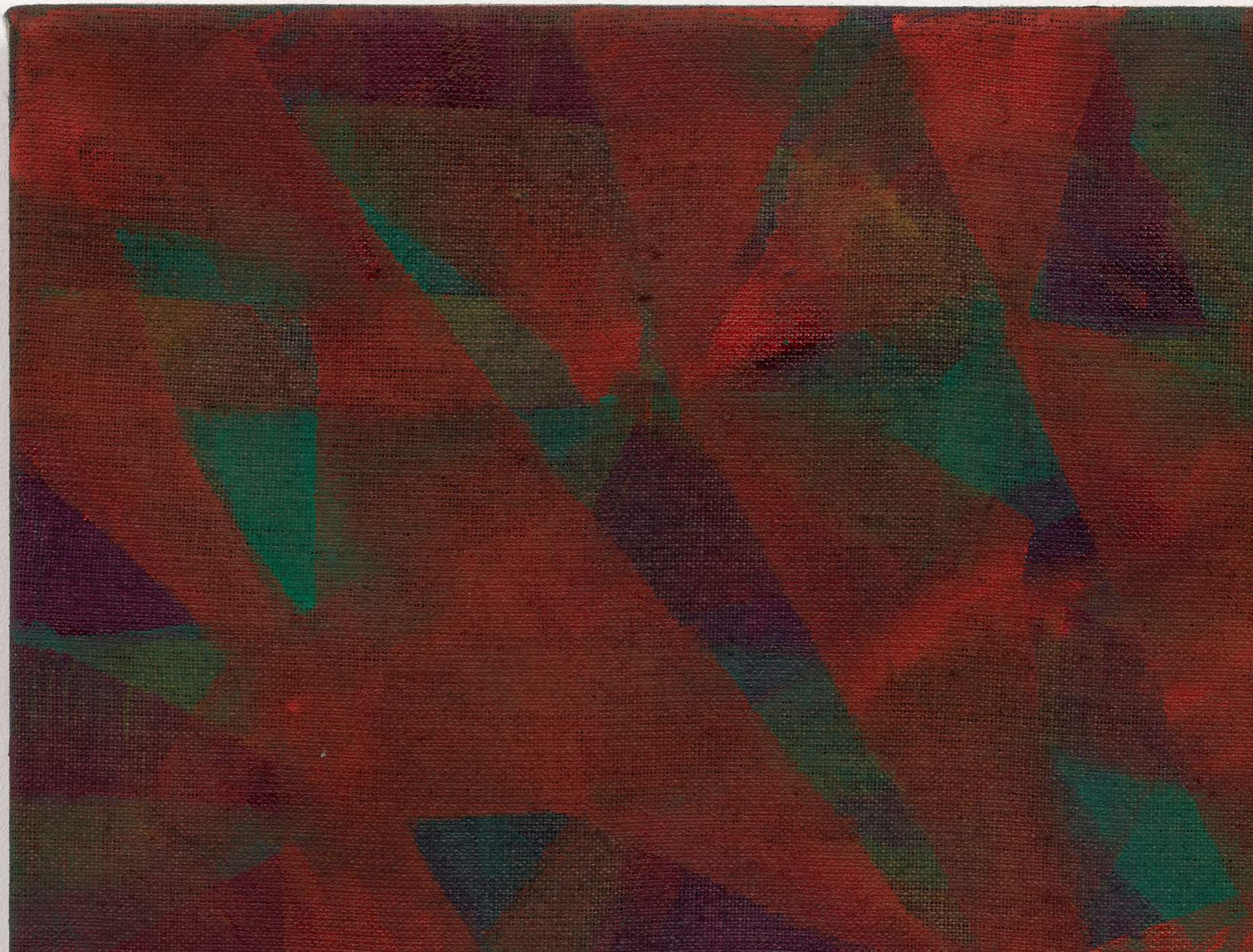
Watercolor on linen

8¼ x 11¾ in.

21 x 29 cm

\$ 4,000





Kim Stolz

18:10

2025

Gouache, watercolor and graphite on linen

11³/₈ x 8¹/₄ in.

29 x 21 cm

\$ 4,000





Kim Stolz

14:20

2026

Watercolor on linen

8¼ x 11¾ in.

21 x 29 cm

\$ 4,000





Raphael Egil

CV

Solo & Duo Exhibitions

2026

Chamber, Chamber (with Kyra Tabea Balderer), Kunsthaus Zug, Switzerland

2025

Secret Recipes, Hochschule Luzern – Design, Film, Kunst (HSLU DFK),
Switzerland

The Head of Marcel Proust, CASSIUS&Co. at Sotheran's Athenaeum,
London, UK

1995, Kornschütte Luzern, Switzerland

2024

Ground Speed, YveYANG Gallery, New York , NY

2023

Natural talents (with Jeroen Geel), Galerie Vitrine, Luzern, Switzerland

2022

Readers, CASSIUS&Co., London, UK

2021

Paintings, CASSIUS&Co., London, UK
Drawingroom, Luzern, Switzerland

2020

New Works, Michael Werner Kunsthandel, Cologne, Germany
Raphael Egil, Galerie Michael Werner, Märkisch Wilmersdorf, Brandenburg,
Germany

2018

Raphael Egil - Bilder, Michael Werner Kunsthandel, Cologne, Germany
Raphael Egil. Peintures, Galerie Michael Werner, Märkisch Wilmersdorf,
Brandenburg, Germany

Raphael Egil, Galerie Kriens, Kriens, Switzerland

2017

demnach, dadurch, sodass (with Katharina Anna Wieser), Künstlerhaus S11,
Solothurn, Switzerland

Ich möchte deinen Körper spüren, Nidwaldner Museum, Winkelriedhaus,
Stans, Switzerland

Kraut Kunstfestival, Luzern, Switzerland

2014

Raum ist, was man in sich trägt, Alpineum Produzentengalerie, Luzern,
Switzerland

2013

both horizontally and vertically (with Sandra Ulloni), Galerie Apropos, Luzern,
Switzerland

2012

Raphael Egil, Alpineum Produzentengalerie, Luzern, Switzerland

2010

Nach der Zeichnung, Alpineum Produzentengalerie, Luzern, Switzerland

2008

Land legen (with Kilian Rüthemann), Alpineum Produzentengalerie, Luzern,
Switzerland

Draussen Nacht, Galerie Ermitage, Beckenried, Switzerland

2007

Raphael Egil, Galerie Benzeholz, Meggen, Switzerland
Raphael Egil, Galerie zur Matze, Brig, Switzerland
Icons, Galerie Billig Bild, Baar, Switzerland

2006

Blick auf die Welt, Goldenes Kalb, Aarau, Switzerland

2004

SchwarzHandPresse, Flaach Kunstpanorama, Luzern, Switzerland
Raphael Egil, Kunstpanorama, Luzern, Switzerland

Group Exhibitions

2024

Scotopia, CABIN Gallery, New York, NY
Breather II, CASSIUS&Co., London, UK

2022

Studies and Exercises, CASSIUS&Co., London, UK
Night Work, CASSIUS&Co., London, UK

2015

Magma, Hochdorf, Switzerland

2014

Antroposphere, Nextex, St. Gallen, Switzerland
Wie real ist Landschaft?, Benzeholz, Switzerland

2013

Impression, Kunsthaus Grenchen, Switzerland
Corpus Delicti, Alpineum Produzentengalerie Luzern, Switzerland

2012

TotalRecall, Studio 44, Stockholm, Sweden

2011

Swiss Art Awards, Messezentrum, Basel, Switzerland
Die Vögel singen, Kunstraum Vitrine, Luzern, Switzerland
Treignac Projet, Galerie d'Art Contemporain, Treignac, France
Drawn Together, Alpineum Produzentengalerie Luzern, Switzerland
Äther, Alpineum Produzentengalerie Luzern, Switzerland

2010

Kopien und Zitate, Alpineum Produzentengalerie, Luzern, Switzerland
SCHAU FENSTER, Christiane Büntgen, Zürich, Switzerland
Herumstreifen in Farbe, Dienstgebäude, Zürich, Switzerland

2009

Werkbeiträge von Stadt und Kanton Luzern, Switzerland

2007

Himmel über Luzern, Alpineum Produzentengalerie Luzern, Switzerland
Heute Wild, S16 Luzern, Switzerland
Boxenstar, Kunstpanorama, Luzern, Switzerland

2006

Heimatflimmern I, Brandenburgischer Kunstverein Potsdam e.V.,
Kunstpanorama Luzern, Switzerland
Kunsthalle?, Interazioni Association, Luzern, Switzerland

Kim Stolz

CV

Solo & Duo Exhibitions

2026

Recent Paintings, YveYANG Gallery, New York, NY

2025

Im Kabinett: Kim Stolz, Kunsthalle Recklinghausen, Recklinghausen, Germany

2024

das Glück kennt nur Minuten, Lucas Hirsch, Düsseldorf, Germany

thirteen paintings, YveYANG Gallery, New York, NY

Elke Denda and Kim Stolz, Linienstrasse 28, Düsseldorf, Germany

2018

Hello green, tell me about pink!, Villa de Bank, Enschede, The Netherlands

Group Exhibitions

2026

Heimspiel, Sammlung Philara, Düsseldorf, Germany

2025

Internationale Bergische Kunstausstellung, Kunstmuseum Solingen, Germany

ARoselsARoselsARoselsARose..., BLOOM, Düsseldorf, Germany

2023

Frag den Abendwind – Klasse Schulze, Akademie Galerie, Düsseldorf, Germany

Super Super Markt (with Tugce Dayioglu, Tessa Perutz), Aachener Str. 28, Cologne, Germany

2022

Fresh Positions – Neues aus der, Kunstakademie, BBK Düsseldorf, Germany

Super Super Markt (with Behrang Karimi, David Ostrowski, Victoria Pidust, Sophie Reinhold, and Tobias Spichtig), Invalidenstrasse 149, Berlin, Germany

2021

Collection 5, Super Super Markt, Online

Collection 6, Super Super Markt, Online

Buntes Gemurmel, Oberbilker Allee 57, Düsseldorf, Germany

Inbetweens, Weltkunstzimmer, Düsseldorf, Germany

YveYANG

12 Wooster St
New York, NY 10013
Tue-Sat, 10 AM-6 PM or by appointment.
+1 617 834 5356

Yve Yang
Founder and Director
yve@yveyang.com

Erica Kyung
Associate Director
erica@yveyang.com

Current Exhibitions

Stephen Lichty
Ghost Stone
May 8 - July 3, 2026
[Online](#)



Previous Exhibitions

Before the Mountain
Merve Ceylan, William Feaver, Lizzy Gabay, Paul Kain, Jörg Kratz, Christoph Matthes, Angus McCrum, Nina Molloy, Konstantin Resch, Miranda Fengyuan Zhang
March 13 - May 2, 2026
[Online](#)



Talisman
Oliver Bak, E'wao Kagoshima, Heidi Lau, Alastair Mackinven, R.H. Quaytman, Pauline Rintsch, Ker-Xavier Roussel, Raphaela Simon, Kiki Smith, Anna-Maria Škroba, Wang Ye, Martin Wong
September 5 - November 1, 2025
[Online](#)

