

SCHENKWEITZDÖRFER

Albertusstr.26 / 50667 Cologne / Tel. +49 1772938326 / www.schenkweitzdoerfer.com

KEYYONA STUMPF
INDEPENDENT NEW YORK



Keiyona C. Stumpf

About

Keiyona C. Stumpf engages deeply in her artistic work with the complexity and multilayered nature of beauty – beyond conventional aesthetic categories. Her sculptures unfold a subversive sensuality that is both seductive and provocative. The organically shaped forms evoke strange natural creatures, exotic plants, or deep-sea animals, creating a world that oscillates between reality and fantasy. In this encounter, a poetic, emotional, and intellectual space opens up for the viewer, one marked not by clarity but by ambiguity. Beauty here does not present itself as a harmonious ideal, but as a vital, contradictory, and challenging force.

The intense, often obsessive sensuality of the sculptures provokes and confronts the viewer with feelings of uncertainty and unease, while simultaneously inviting a deeper engagement with form and meaning. Their glossy, slippery surfaces evoke associations with nature, yet the seemingly sensual beauty is not free from threat—it can also be perceived as dangerous, destructive, or aggressive. Stumpf deliberately plays with this tension, which oscillates between aesthetic allure and potential danger

At the same time, she incorporates art historical references, particularly to Mannerism and the Baroque, whose emotional intensity and dynamic expressiveness she continues in a contemporary form. Her sculptures exist in a state of constant transformation, reflecting the instability and uncertainty of our present-day world. Natural and artificial elements merge, boundaries are blurred—not only between form and content but also between object and space. The surrounding space is actively integrated into the sculptures' impact, creating a fluid relationship between the artwork and its environment.

Artist Statement

The infinitely vast repertoire of natural phenomena, their inherent laws and forces of growth, as well as the cycles of becoming and passing away, serve as an inexhaustible source of inspiration for me. Through an organically abstracted formal language, I seek to make the essence of the living perceptible. Order and chaos, as the originating principles of all life, form both the conceptual and formal foundation of my work. Strange and yet curiously familiar shapes in my sculptural and installation-based works undergo manifold metamorphoses or find, within round and flowing silhouettes, their subtle balance between fragility and stability.

Guided by feeling and intuition, my works emerge from an interplay between concrete ideas and spontaneous responses to chance transformations occurring within the creative process itself. Thus, the works appear to be driven by an inner dynamism, harboring within them the potential for change and evolution.

Here, natural beauty is not regarded as something complete, but as the expression of a creative and generative process capable of touching our own inner realities and reconnecting us with the most fundamental principles of our existence. Ultimately, human beings and nature do not stand as opposing forces separated from one another. Nature is not merely the basis of our existence — we *are* nature and carry all of its principles within us.



Memento Vivere I, 2021;
glazed ceramic,
35 x 27.6 x 8.7 in.

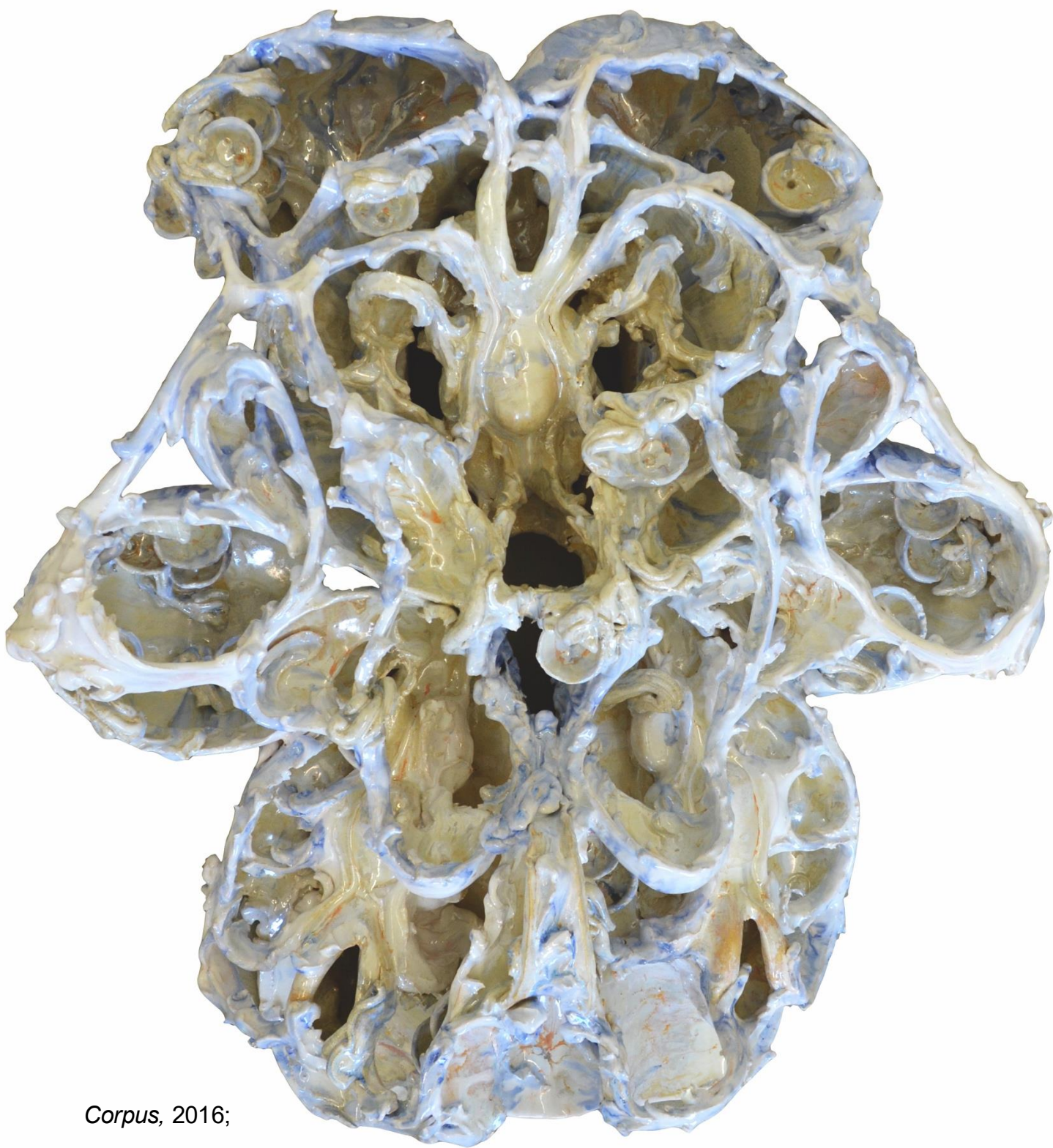
\$30.000,00



Memento Vivere I, detail



Memento Vivere I, detail



Corpus, 2016;
glazed ceramic,
29.5 x 34 x 10 in.

\$32.000,00



Corpus, detail



Corpus, detail



Memento Vivere III, 2021;

glazed ceramic,

35 x 27.6 x 8.7 in.

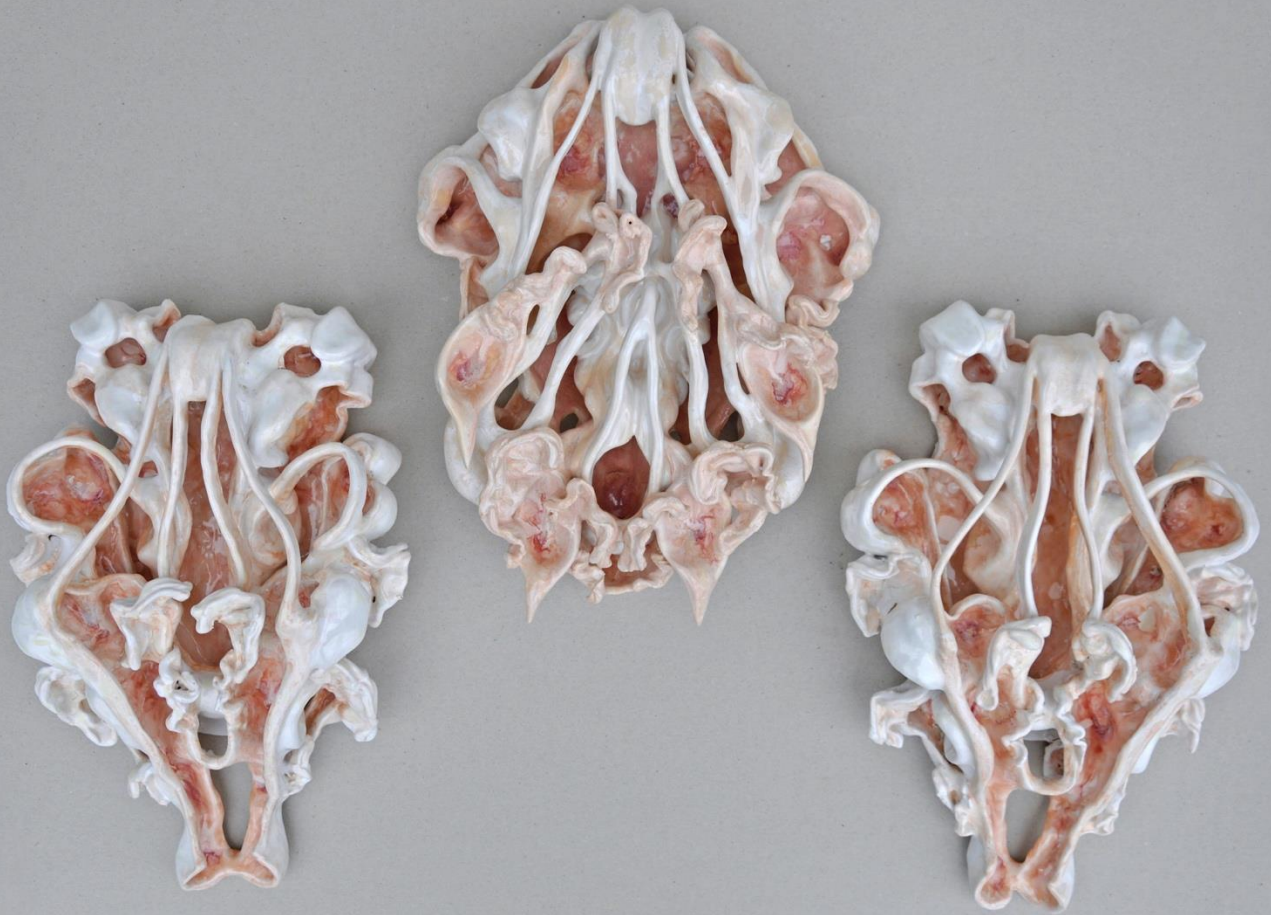
\$30.000,00



Memento Vivere III, detail



Memento Vivere III, detail



Bows, 2018;
glazed ceramic,
left/right: 17 x 11 x 4.7 in.
middle: 18.5 x 13 x 5 in.

\$17.000,00



Bows, detail



Bows, detail

Simulacrum III, 2025;
glazed ceramic,
39.8 x 28 x 32.7 in.

\$35.000,00





Simulacrum III, detail



Simulacrum III, detail



Torsion XI, 2026;
glazed ceramic
4.7 x 11 x 7.9 in.



Torsion XII, 2026;
glazed ceramic
4.7 x 11 x 7.9 in.



Torsion XIII, 2026;
glazed ceramic,
5.5 x 11 x 7.9 in.



Torsion XIV, 2026:
glazed ceramic,
4.7 x 10.8 x 7.9 in.



Torsion XVI, 2026;
glazed ceramic,
4.3 x 9.8 x 6.7 in.



Torsion XVII, 2026;
glazed ceramic,
5.5 x 11 x 7.9 in.



Torsion, detail



Torsion, detail



Kumulation II, 2025;

glazed ceramic,

24 x 21 x 18 in

\$20.000,00



Kumulation II, different angle



Kumulation II, detail



Kumulation II, detail



Crown, 2025;
glazed ceramic,
30.7 x 29.1 x 20.9 in.

\$30.000,00



Crown, 2025; different side



Crown, 2025; different angle



Crown, 2025; different side