

WHITE CUBE

The background is a complex, layered architectural drawing. It features a dense network of thin, intersecting lines in various colors (black, grey, blue, green, red) that create a sense of depth and movement. A prominent, solid green vertical bar runs along the left side of the image. Overlaid on this are faint, sketchy outlines of buildings and structures, some of which are more detailed than others. The overall effect is one of a busy, multi-dimensional urban environment.

ART BASEL PARIS

16–20 October 2024

TUNJI ADENIYI-JONES
ETEL ADNAN
ALIA AHMAD
JOSEF ALBERS
DARREN ALMOND
CHRISTINE AY TJOE
BRAM BOGART
PIER PAOLO CALZOLARI
JULIE CURTISS
SALVADOR DALÍ
LYNNE DREXLER
JEAN DUBUFFET
SALVATORE EMBLEMA
TRACEY EMIN
CERITH WYN EVANS
LUCIO FONTANA
THEASTER GATES
ANTONY GORMLEY

DAVID HAMMONS
MONA HATOUM
MARGUERITE HUMEAU
RICHARD HUNT
IMI KNOEBEL
JANNIS KOUNELLIS
YOKO MATSUMOTO
TIONA NEKKIA MCCLODDEN
JULIE MEHRETU
ISAMU NOGUCHI
MINORU NOMATA
PARK SEO-BO
A.R. PENCK
HOWARDENA PINDELL
MAGNUS PLESSSEN
MARINA RHEINGANTZ
TAKIS

Stand B34
Grand Palais
3 avenue du Général Eisenhower
75008 Paris

JULIE MEHRETU

Insile

2013

Ink and acrylic on linen

274.3 × 365.8 | 108 × 144 in.

Price upon application

This work is the focus of White Cube's October Salon presentation

Click [HERE](#) to view a video of this work





RICHARD HUNT

Construction N

1956

Welded steel and cottonwood

96.5 × 66 × 63.5 cm | 38 × 26 × 25 in.

USD 800,000 *plus applicable taxes*







THEASTER GATES

Dirty Silver, Tight Strata
2024

Industrial oil-based enamel, rubber torch down, bitumen, wood
and copper

147 × 149 × 15 cm | 57 ⁷/₈ × 58 ¹/₆ × 5 ⁷/₈ in.

USD 375,000 *plus applicable taxes*

Click [HERE](#) to view a video of this work



Theaster Gates will open a major solo exhibition at White Cube Bermondsey, London, in February 2025.



TRACEY EMIN

Ascension

2024

Patinated bronze (silver nitrate)

Edition of 3 and 2 APs

72.5 × 36 × 23.5 cm | 28 ⁵/₁₆ × 14 ³/₁₆ × 9 ¹/₄ in.

GBP 245,000 *plus applicable taxes*

Click [HERE](#) to view a video of this work



Honoured with a damehood earlier this year for her services to art, Tracey Emin's solo exhibition, 'I followed you to the end', is on view at White Cube Bermondsey, London, until 10 November. In spring 2025, Emin will open major solo international survey exhibitions at the Palazzo Strozzi in Florence, Italy, and the Yale Center for British Art in New Haven, Connecticut.



MARINA RHEINGANTZ

Pink Panther

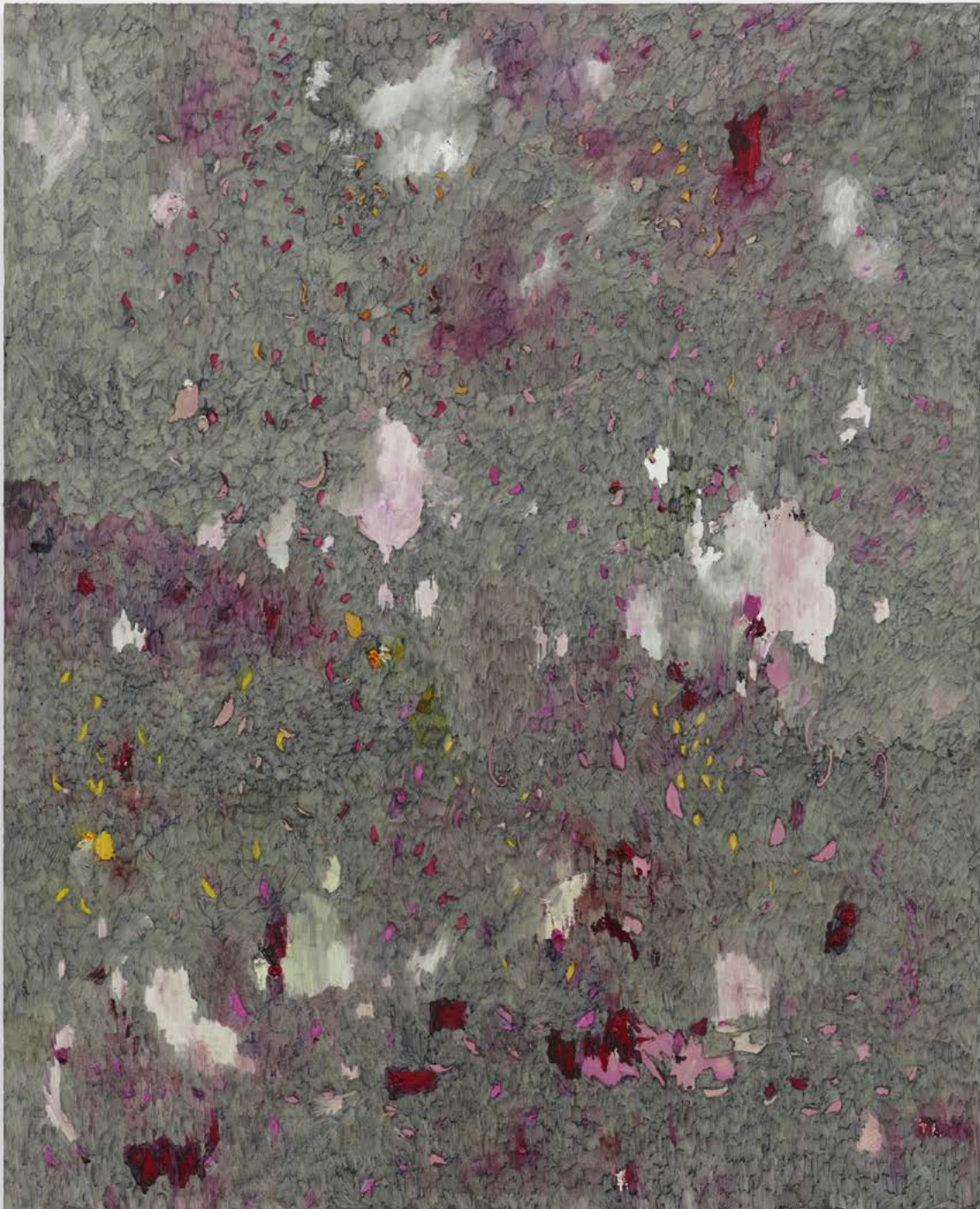
2024

Oil on canvas

210 × 170 cm | 82 1/8 × 66 15/16 in.

USD 160,000 *plus applicable taxes*

Click [HERE](#) to view a video of this work





CHRISTINE AY TJOE

The Model of Plasma Species

2024

Oil on canvas

170.1 × 150.4 cm | 66 ¹/₈ × 59 ³/₈ in.

USD 190,000 *plus applicable taxes*

Click [HERE](#) to view a video of this work





ANTONY GORMLEY

STRAIN III

2023

Cast iron

180 × 47.5 × 37.4 cm | 70 $\frac{7}{8}$ × 18 $\frac{1}{16}$ × 14 $\frac{3}{4}$ in.

GBP 500,000 *plus applicable taxes*





JOSEF ALBERS

Study for Homage to the Square: Terraced
1954–56

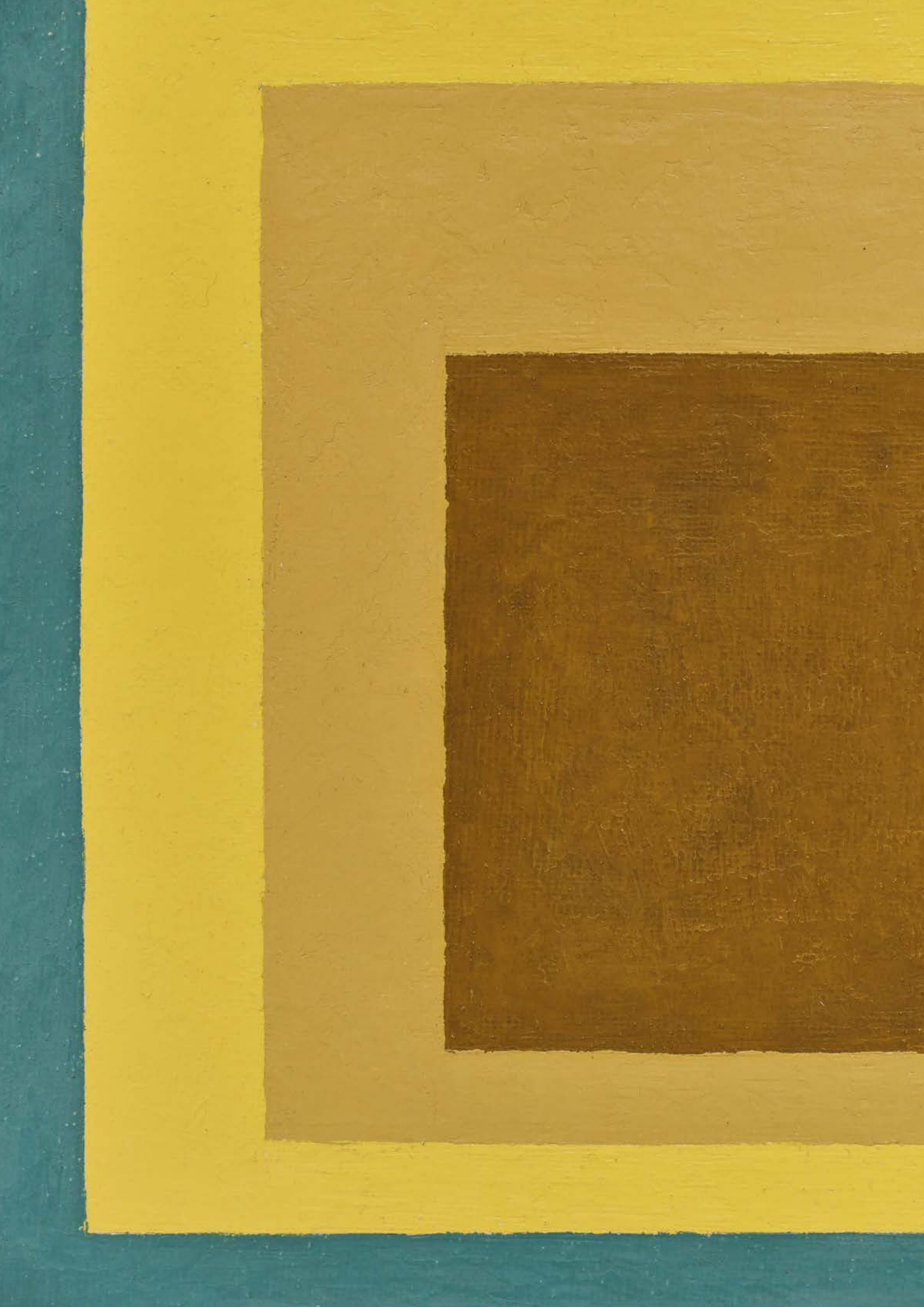
Oil on Masonite

45.7 × 45.7 cm | 18 × 18 in.

47.2 × 47.2 × 3.4 cm | 18 ½ × 18 ½ × 1 ⅓ in. (framed)

EUR 570,000 *plus applicable taxes*





JANNIS KOUNELLIS

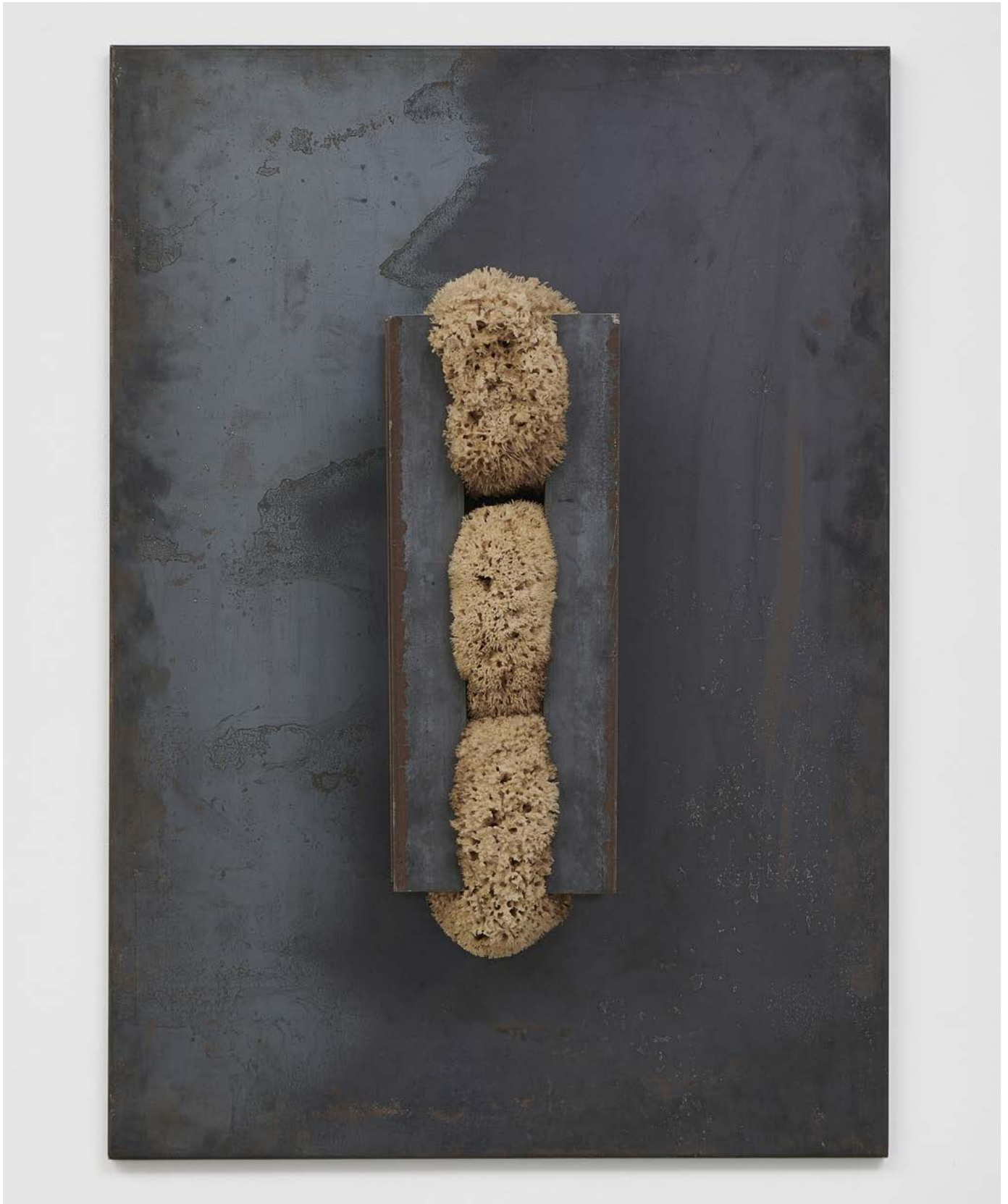
Untitled

1997

Steel, iron and sponge

100 × 70 × 18.5 cm | 39 $\frac{3}{8}$ × 27 $\frac{5}{16}$ × 7 $\frac{5}{16}$ in.

EUR 170,000 *plus applicable taxes*





DAVID HAMMONS

Untitled (Body Print)

c.1974

Grease and dry pigment on paper

71.8 × 57.2 cm | 28 ¼ × 22 ½ in.

87.8 × 73.2 × 3.7 cm | 34 ⅞ × 28 ⅓ × 1 ⅞ in. (framed)

USD 750,000 *plus applicable taxes*

Click [HERE](#) to view a video of this work





TIONA NEKKIA MCCLODDEN

NEVER LET ME GO | XII. only by special order
2024

Black jute rope, leather, leather dye and Saphir shoe polish
123 × 64 × 9 cm | 48 $\frac{7}{16}$ × 25 $\frac{3}{16}$ × 3 $\frac{9}{16}$ in.

USD 75,000 *plus applicable taxes*





JULIE CURTISS

Whisperers

2024

Oil on canvas

81.9 × 127.6 cm | 32 ¼ × 50 ¼ in.

USD 90,000 *plus applicable taxes*





MONA HATOUM

Basket V

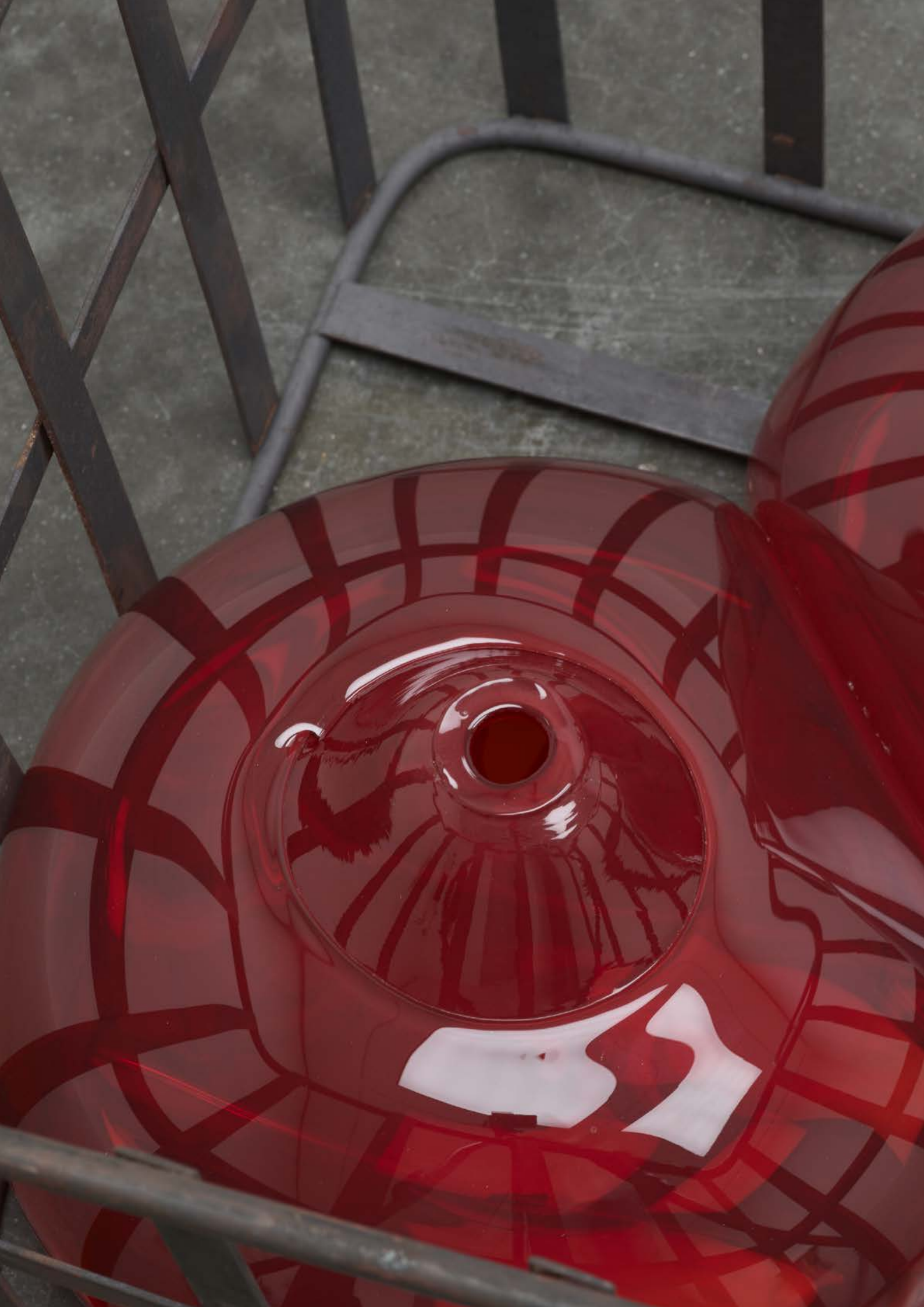
2024

Handblown glass and steel

26.7 × 44.5 × 35.5 cm | 10 ½ × 17 ½ × 14 in.

GBP 110,000 *plus applicable taxes*





LUCIO FONTANA

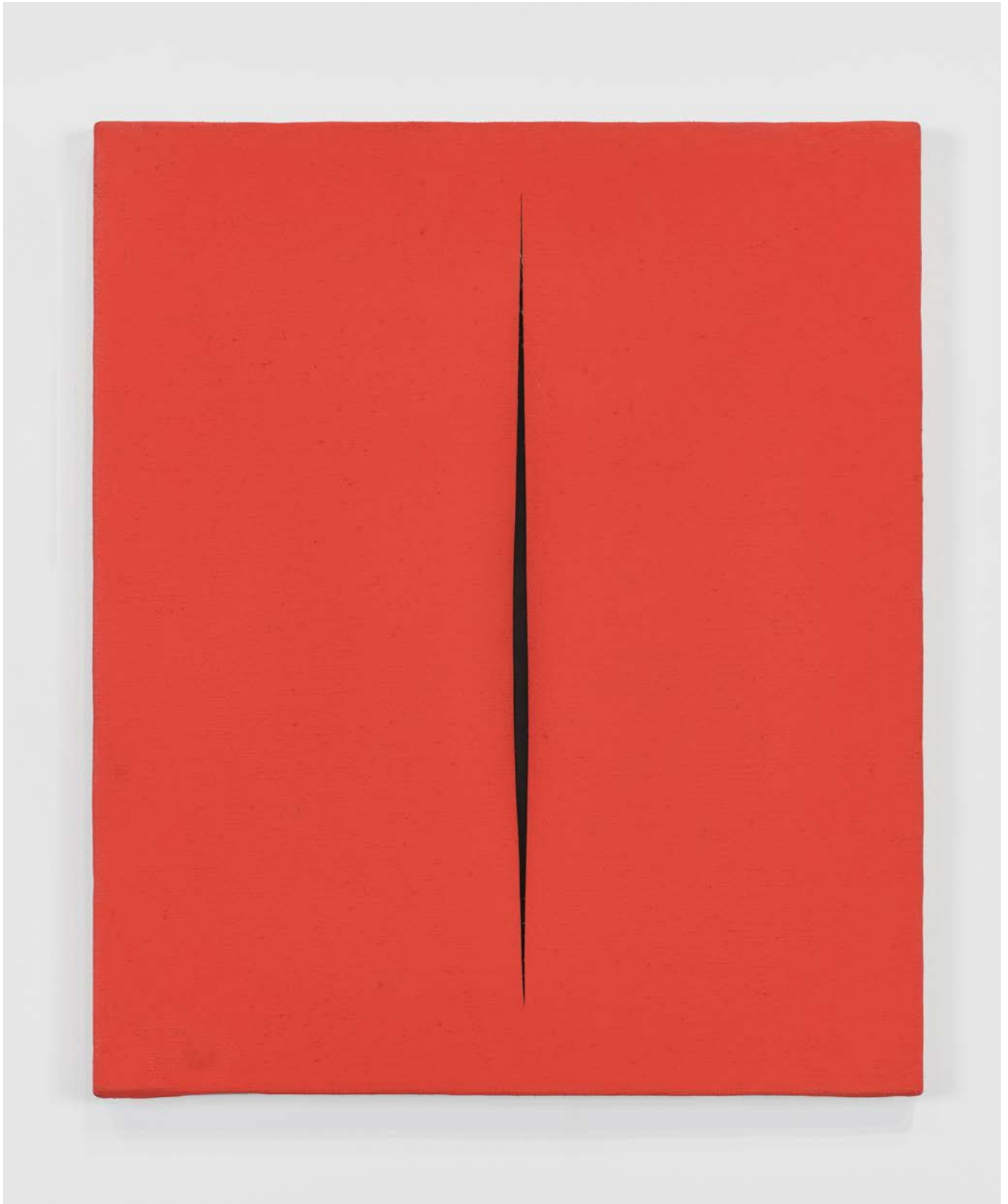
Concetto spaziale, Attesa

1965

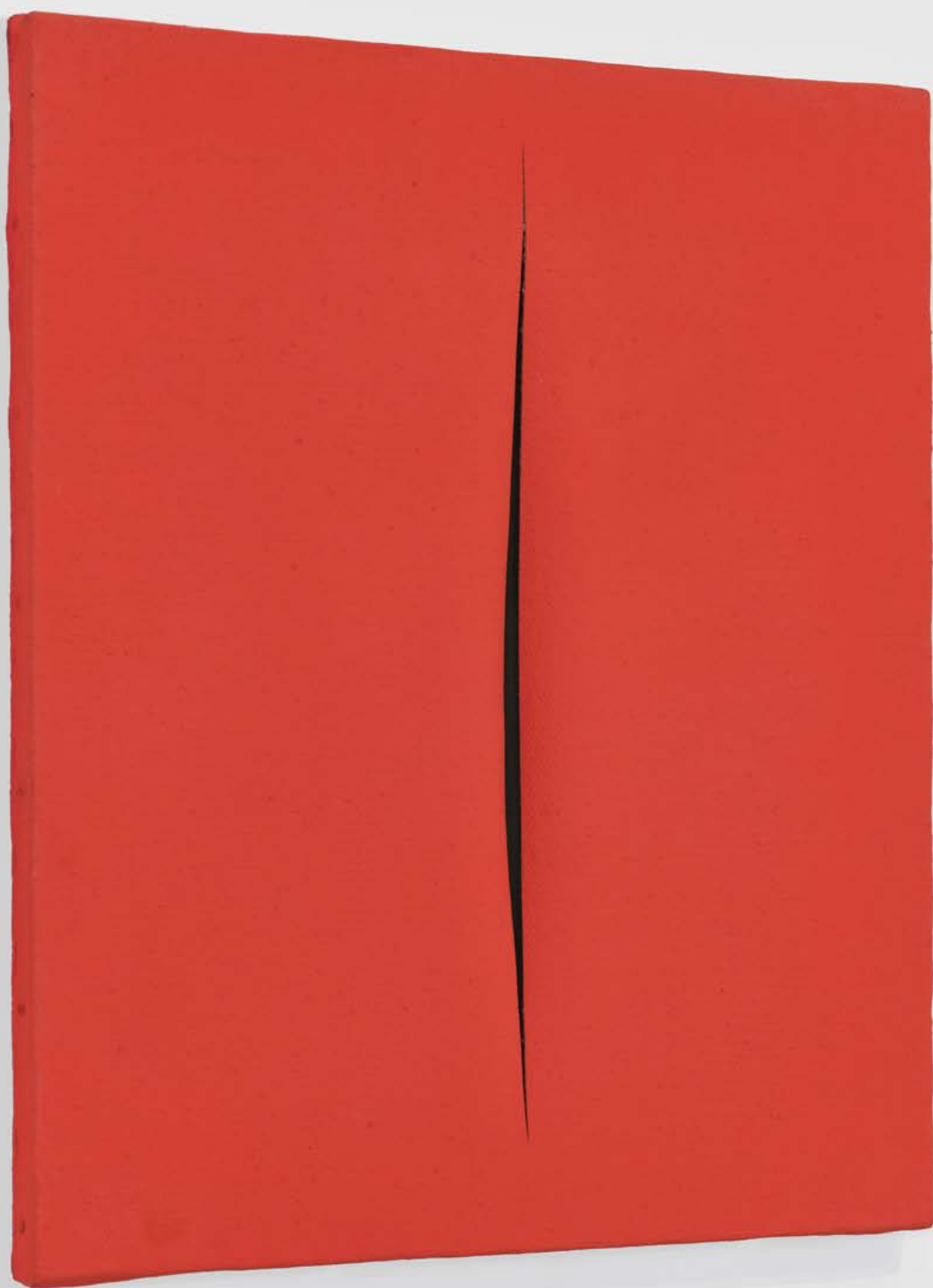
Waterpaint on canvas

41.4 × 35.2 cm | 16 ⁵/₁₆ × 13 ⁷/₈ in.

EUR 1,200,000 *plus applicable taxes*







JEAN DUBUFFET

Site philosophique

1974

Vinyl on canvas

203.2 × 129.9 cm | 80 × 51 ½ in.

219.5 × 146.5 × 5 cm | 86 ¾ × 57 1½ × 1 15⁄16 in. (framed)

Price upon application







TAKIS

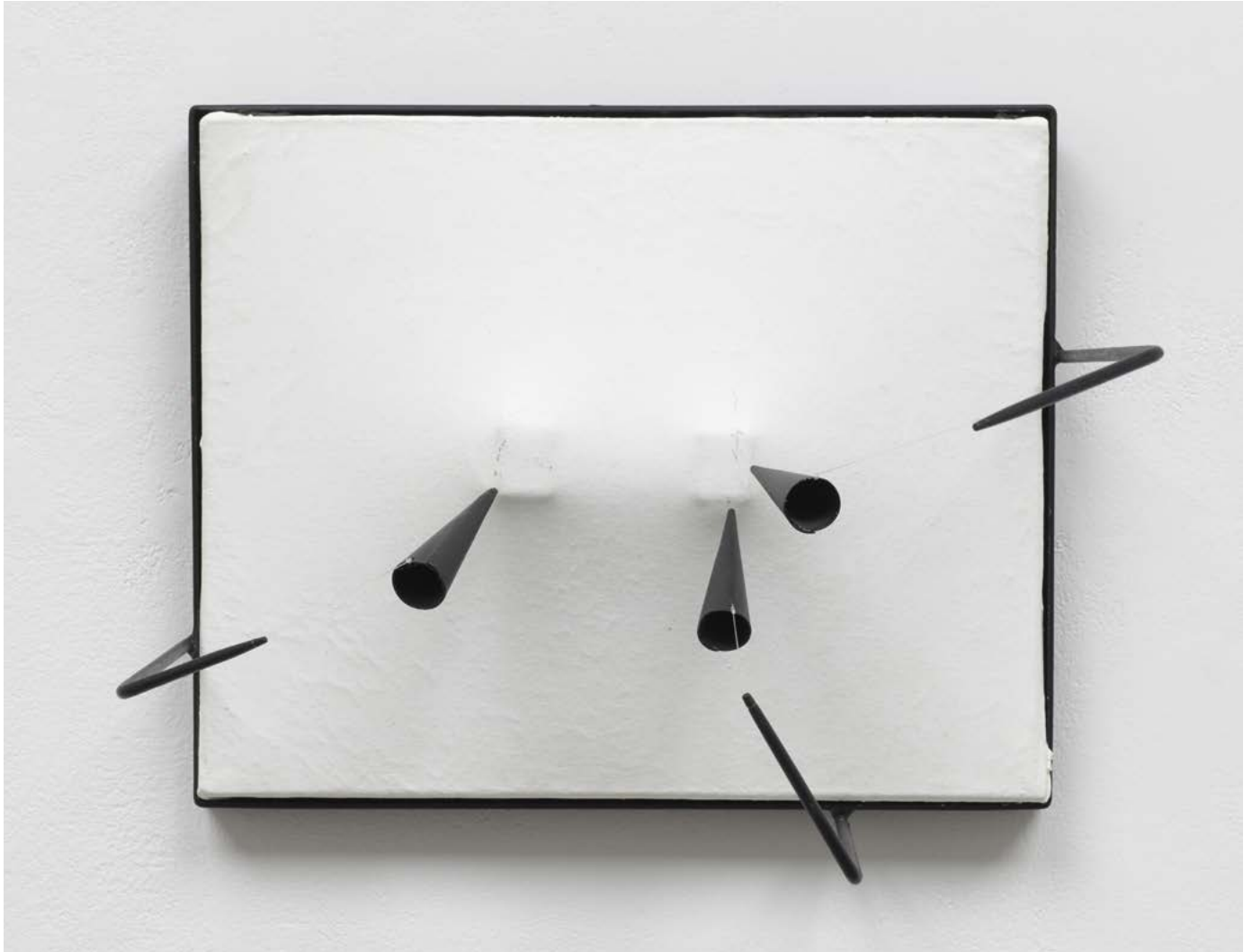
Télépeinture

1960

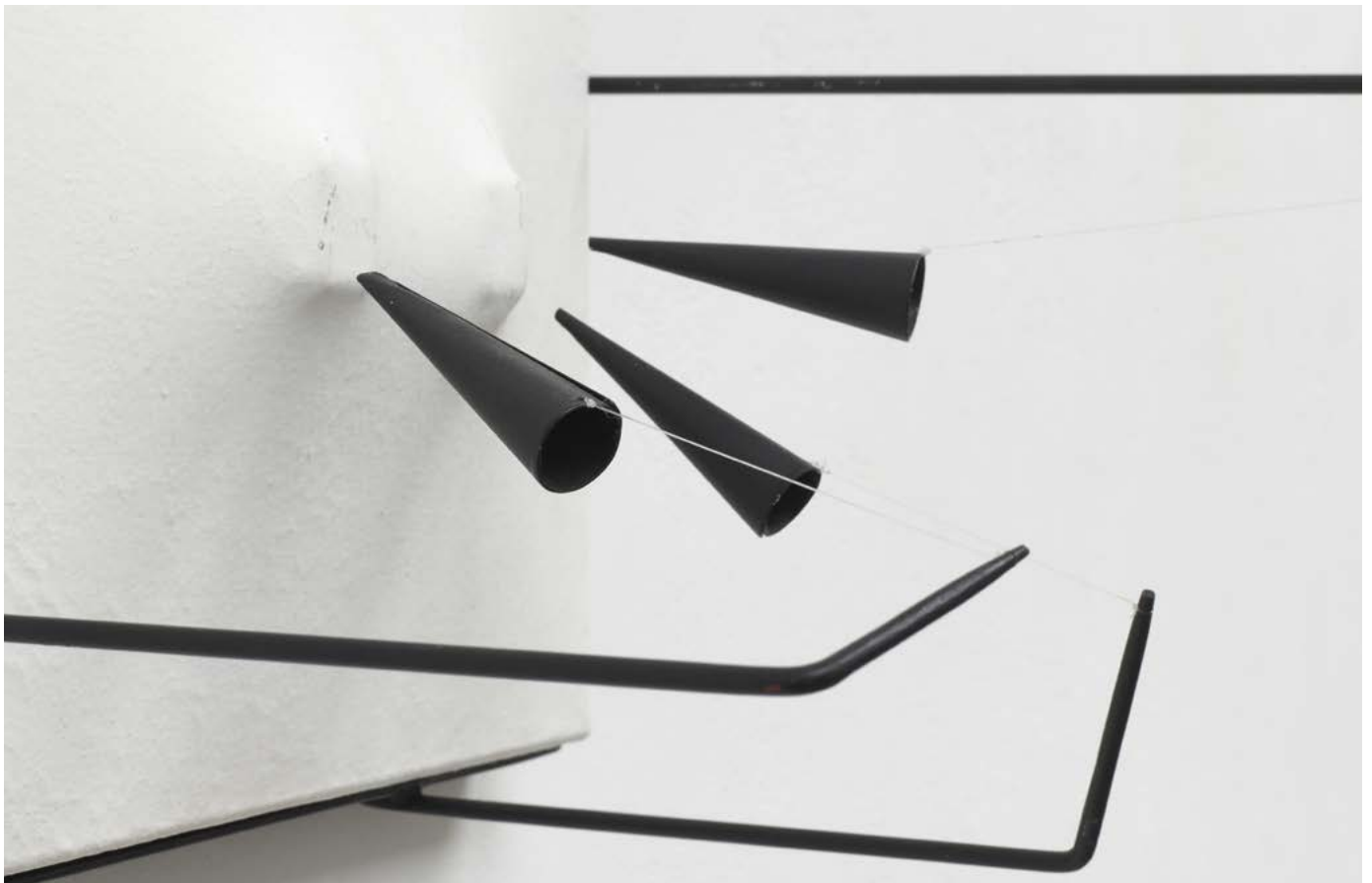
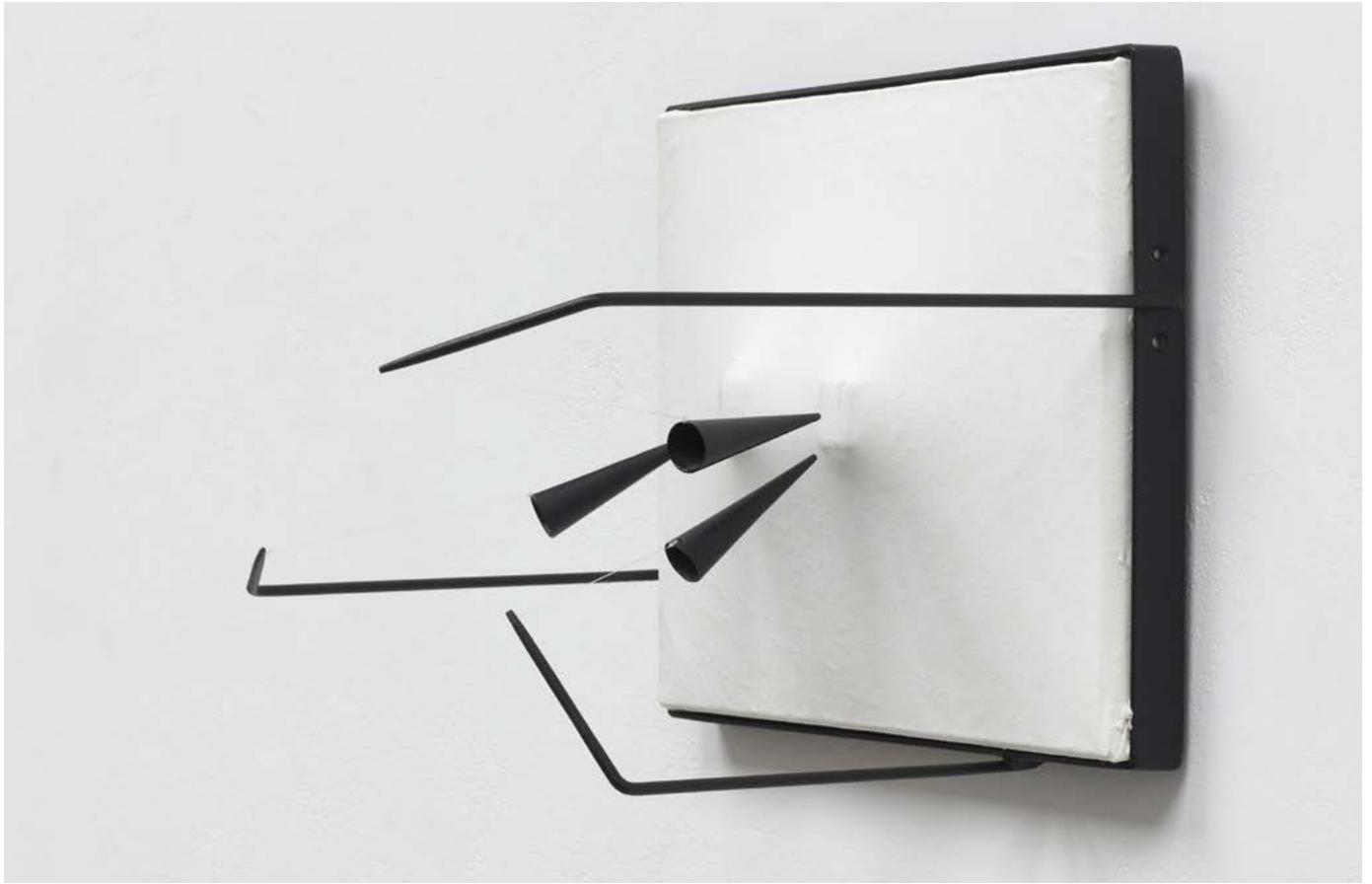
Acrylic on canvas, painted iron, threads and magnets

27.5 × 22 × 26 cm | 10 ¹³/₁₆ × 8 ¹³/₁₆ × 10 ¹/₄ in.

EUR 78,000 *plus applicable taxes*



White Cube Paris is pleased to be opening a solo exhibition of works by Takis, running from 20 November 2024 to 11 January 2025.



LYNNE DREXLER

Floral Island

1966

Oil on canvas

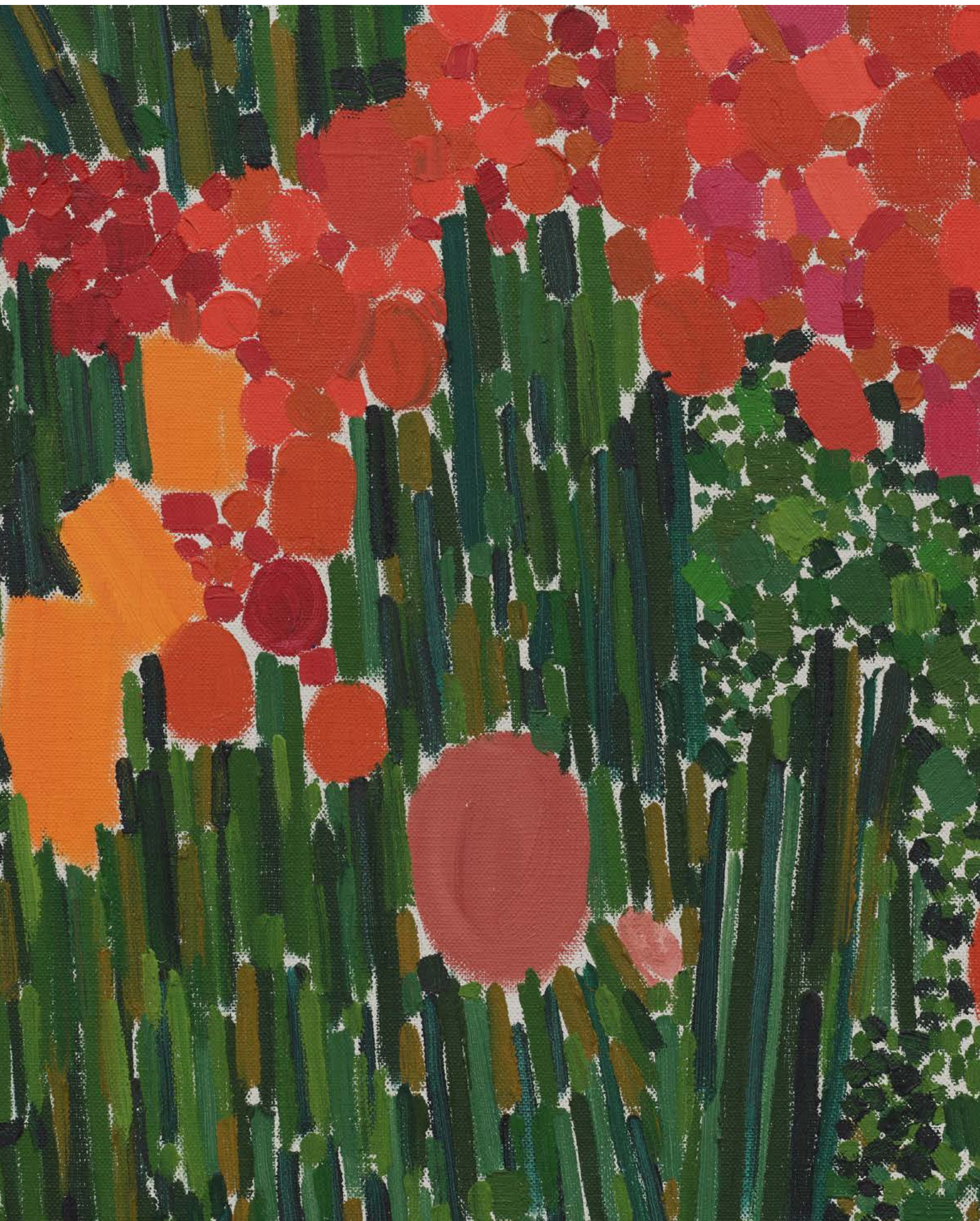
76.8 × 97.8 cm | 30 ¼ × 38 ½ in.

81.2 × 101.2 × 4.1 cm | 31 ⅞ × 39 ⅞ × 1 ⅝ in. (framed)

USD 550,000 *plus applicable taxes*



White Cube is pleased to present 'Lynne Drexler: The Sixties', a solo exhibition of works by the late American artist, opening 27 November 2024.



PARK SEO-BO

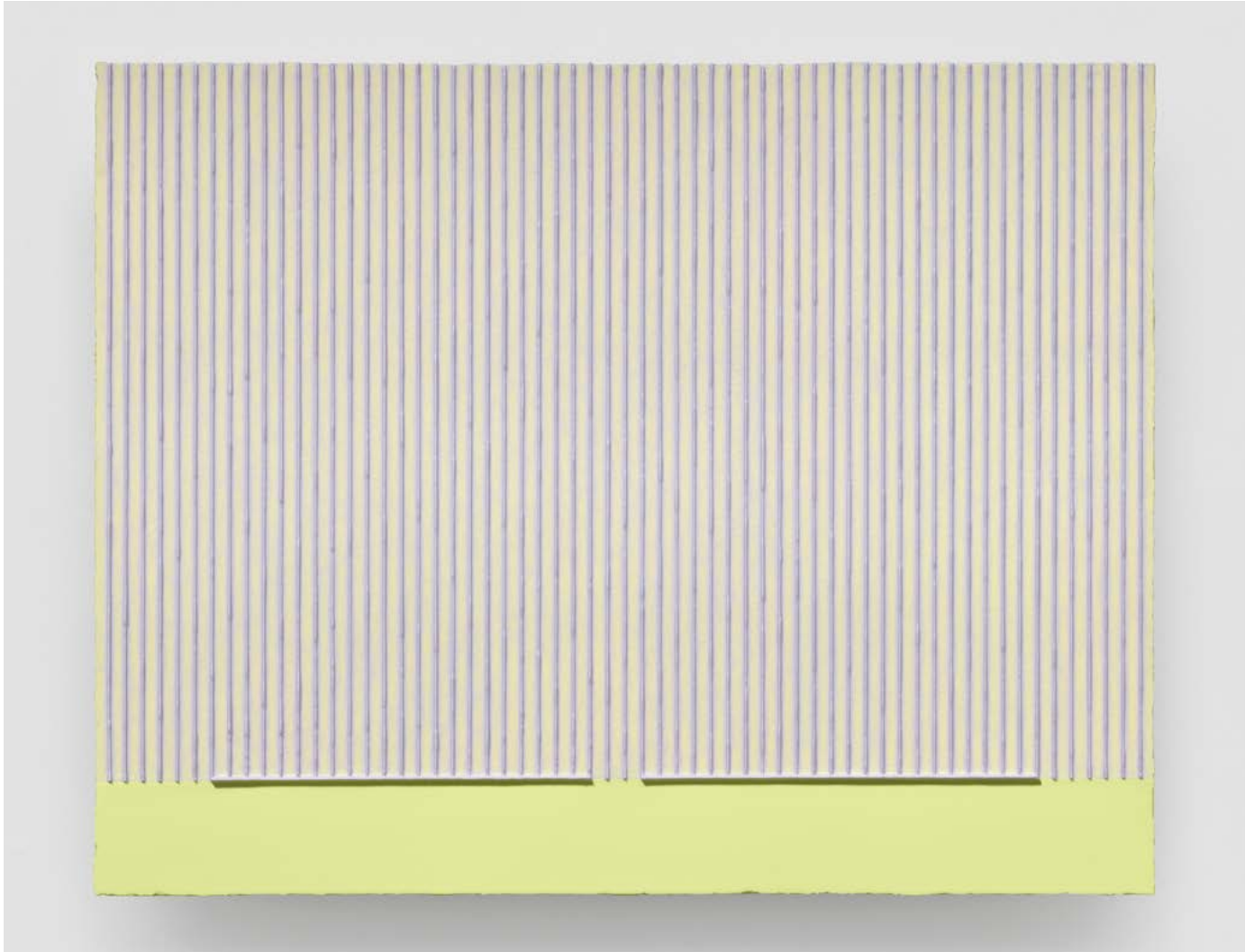
Ecriture No.221102

2022

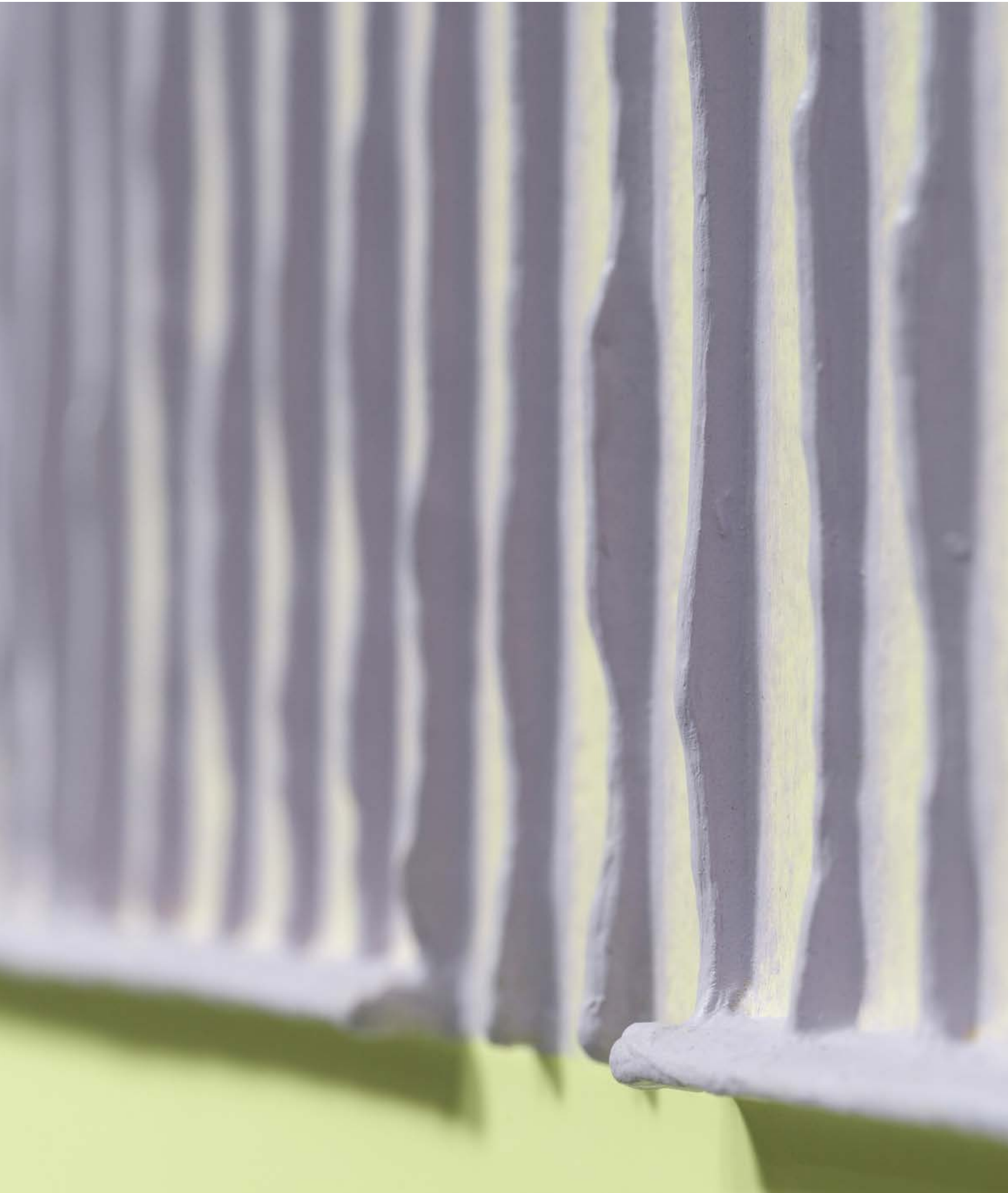
Acrylic on ceramic

73.5 × 93.5 cm | 28 ¹⁵/₁₆ × 36 ¹³/₁₆ in.

USD 250,000 *plus applicable taxes*



White Cube New York is pleased to present a selection of recent 'Newspaper Ecriture' paintings by Park Seo-Bo, the final body of work created by the artist before his passing in 2023. The exhibition is on view from 8 November 2024 until 11 January 2025.



YOKO MATSUMOTO

Edom Becomes Wilderness

1989

Acrylic on canvas

182 × 227 cm | 71 ⁵/₈ × 89 ³/₈ in.

USD 70,000 *plus applicable taxes*



HOWARDENA PINDELL

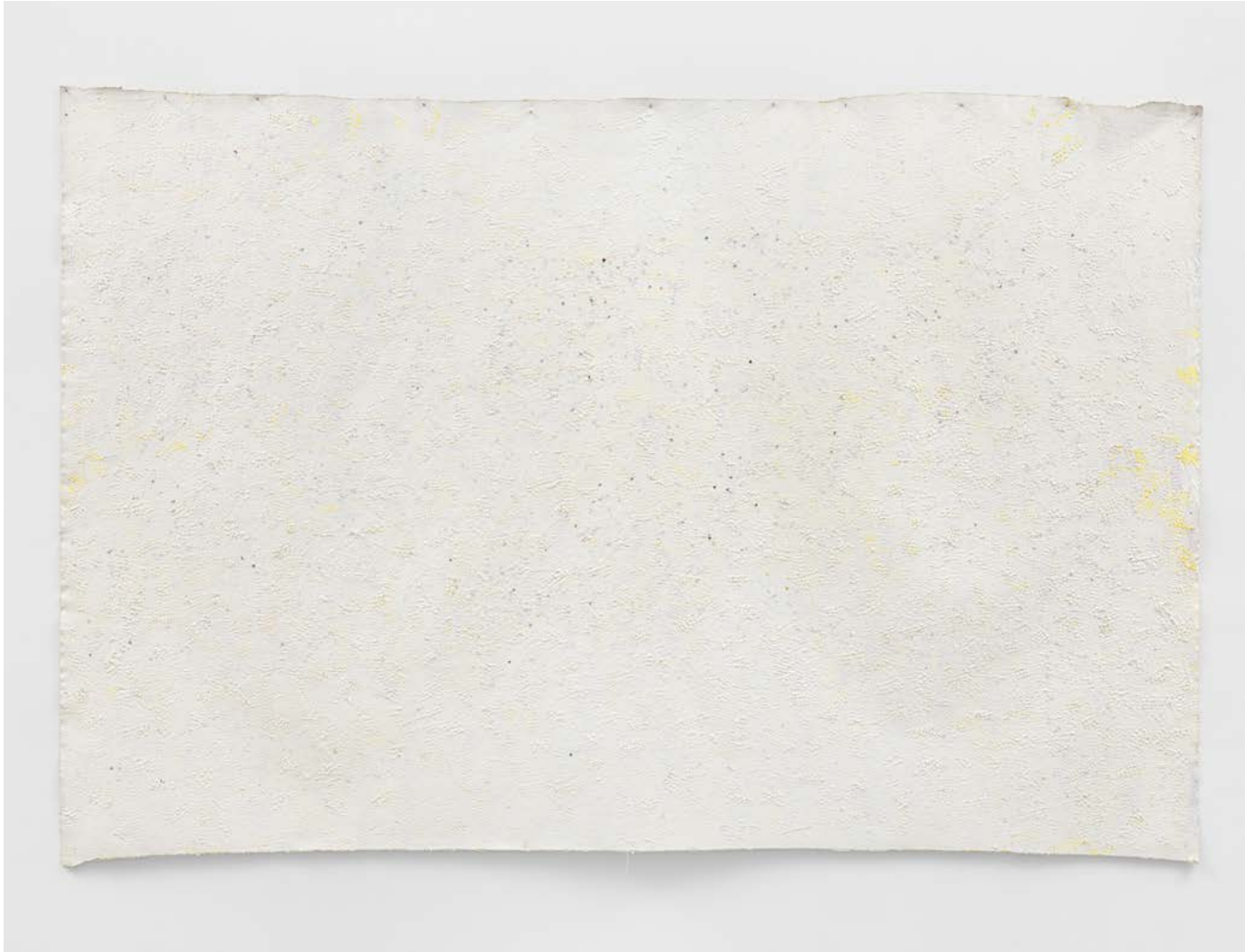
Untitled

1975

Mixed media on canvas

165.1 × 238.8 cm | 65 × 94 in.

Price upon application



A solo exhibition of new paintings by American artist Howardena Pindell will be on view at White Cube Hong Kong from 20 November 2024 to 8 January 2025.



LUCIO FONTANA

Concetto spaziale, Attese
1964–65

Waterpaint on canvas
61 × 50 cm | 24 × 19 ¹/₁₆ in.

EUR 1,300,000 *plus applicable taxes*



TAKIS

Signal

c.1962–64

Painted iron and found objects

118.6 × 106 × 54.4 cm | 46 ¹/₆ × 41 ³/₄ × 21 ⁷/₆ in.

EUR 130,000 *plus applicable taxes*





A.R. PENCK

Terminate the X (I)

1989

Oil on canvas

80 × 100 cm | 31 ½ × 39 ¾ in.

83.5 × 103.5 × 3.5 cm | 32 ⅞ × 40 ¾ × 1 ⅜ in. (framed)

USD 275,000 *plus applicable taxes*





dr. perwé

ETEL ADNAN

Untitled

2016

Oil on canvas

33 × 41 cm | 13 × 16 ½ in.

38 × 46 × 4 cm | 14 ⅝ × 18 ⅞ × 1 ⅝ in. (framed)

USD 300,000 *plus applicable taxes*

Click [HERE](#) to view a video of this work





BRAM BOGART

Printemps Néerlandais

1959

Mixed media

152 × 115 cm | 59 ¹³/₁₆ × 45 ¹/₄ in.

EUR 190,000 *plus applicable taxes*





ISAMU NOGUCHI

Nature is the true art

1966

Wood, iron and black ink

25.5 × 17.2 × 15.2 cm | 10 $\frac{1}{6}$ × 6 $\frac{3}{4}$ × 6 in.

EUR 28,000 *plus applicable taxes*





TUNJI ADENIYI-JONES

Deep Dive

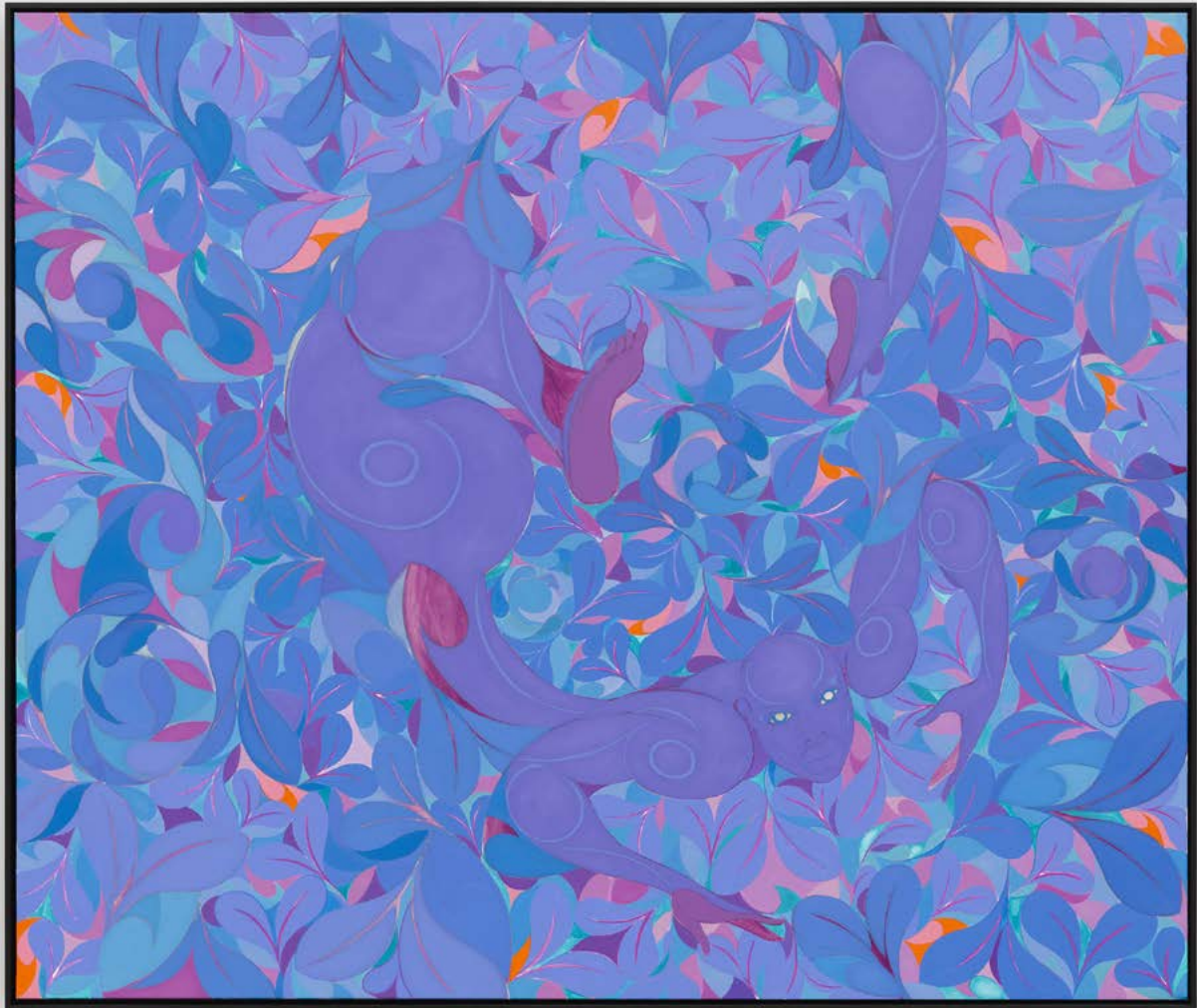
2024

Oil on canvas

160.5 × 190.5 cm | 63 ³/₁₆ × 75 in.

163.7 × 193.4 × 6.5 cm | 64 ⁷/₁₆ × 76 ¹/₈ × 2 ⁹/₁₆ in. (framed)

USD 85,000 *plus applicable taxes*



Tunji Adeniyi-Jones is currently exhibiting his work in a group exhibition as part of Nigeria's national pavilion at La Biennale di Venezia, Italy, running until 24 November 2024. Following this, White Cube will present the artist's debut solo exhibition in Korea, featuring a new series of paintings, opening on 10 January 2025.



MARGUERITE HUMEAU

Shameless Venus, A 20-year-old female human has ingested a mole's brain

2018

Bronze

4.2 × 14.3 × 3 cm | 1 5⁄8 × 5 5⁄8 × 1 3⁄16 in.

GBP 25,000 *plus applicable taxes*



In addition to her current participation in the Gwangju Biennial in Seoul, Marguerite Humeau will present a major solo exhibition at ICA Miami in Florida, opening on 3 December 2024 during Art Basel Miami Beach and running until 30 March 2025. Titled 'sk/ey-', the exhibition marks Humeau's first large-scale institutional presentation in the United States.



ALIA AHMAD

Finood 2 / فنود | Branches of a tree 2
2024

Oil on canvas

140 × 140 cm | 55 ½ × 55 ½ in.

USD 70,000 *plus applicable taxes*



A solo exhibition of Alia Ahmad's work will open at White Cube Mason's Yard, London, in March 2025. Inspired by recollections and observations of the artist's native Riyadh, *Finood 2* / دونف | *Branches of a tree 2*, created in 2024, narrates the convergence of landscape and memory.



CERITH WYN EVANS

C=L=E=A=V=E 23 (after P.P.C.)

2023

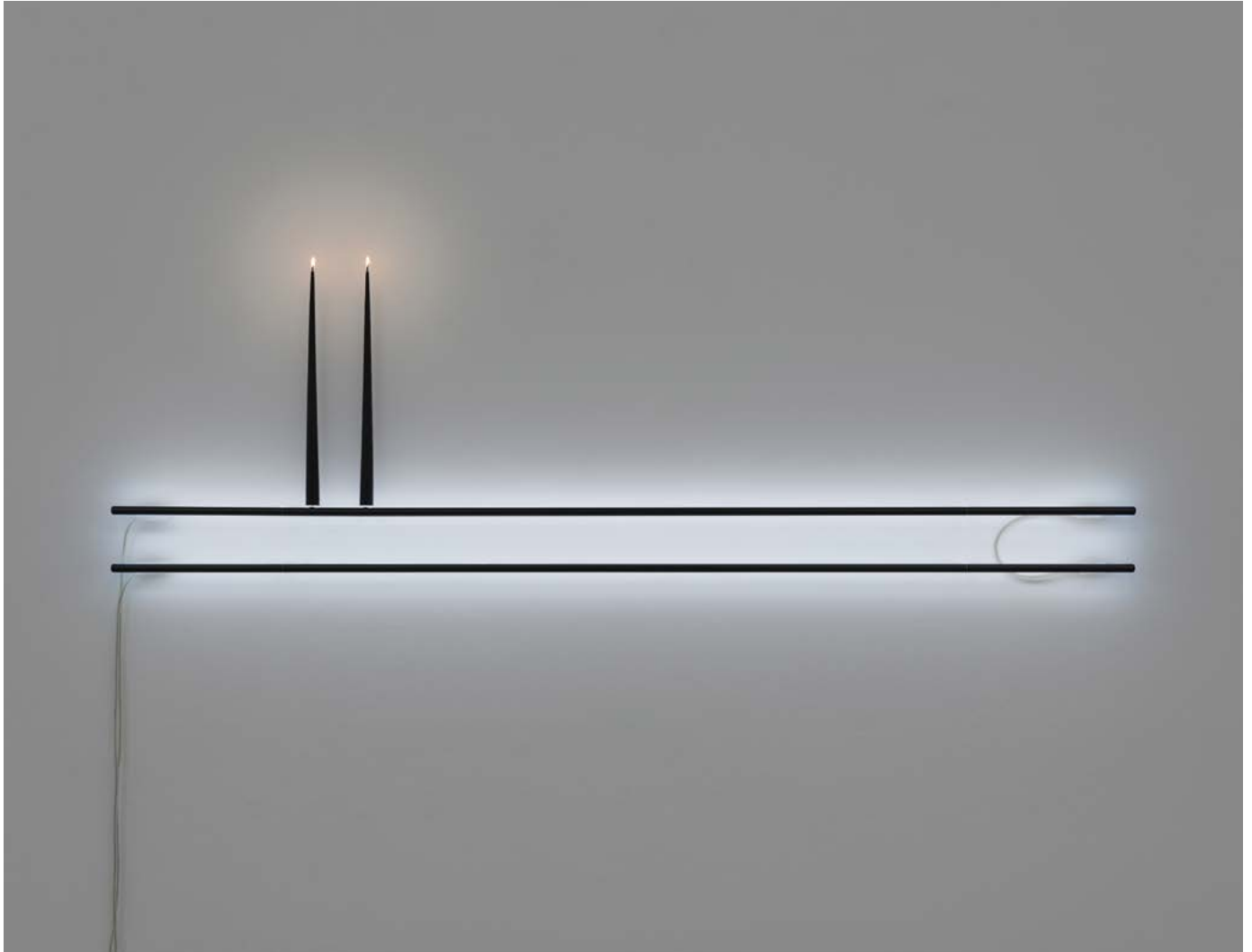
Two 'negative' neon forms and two candles

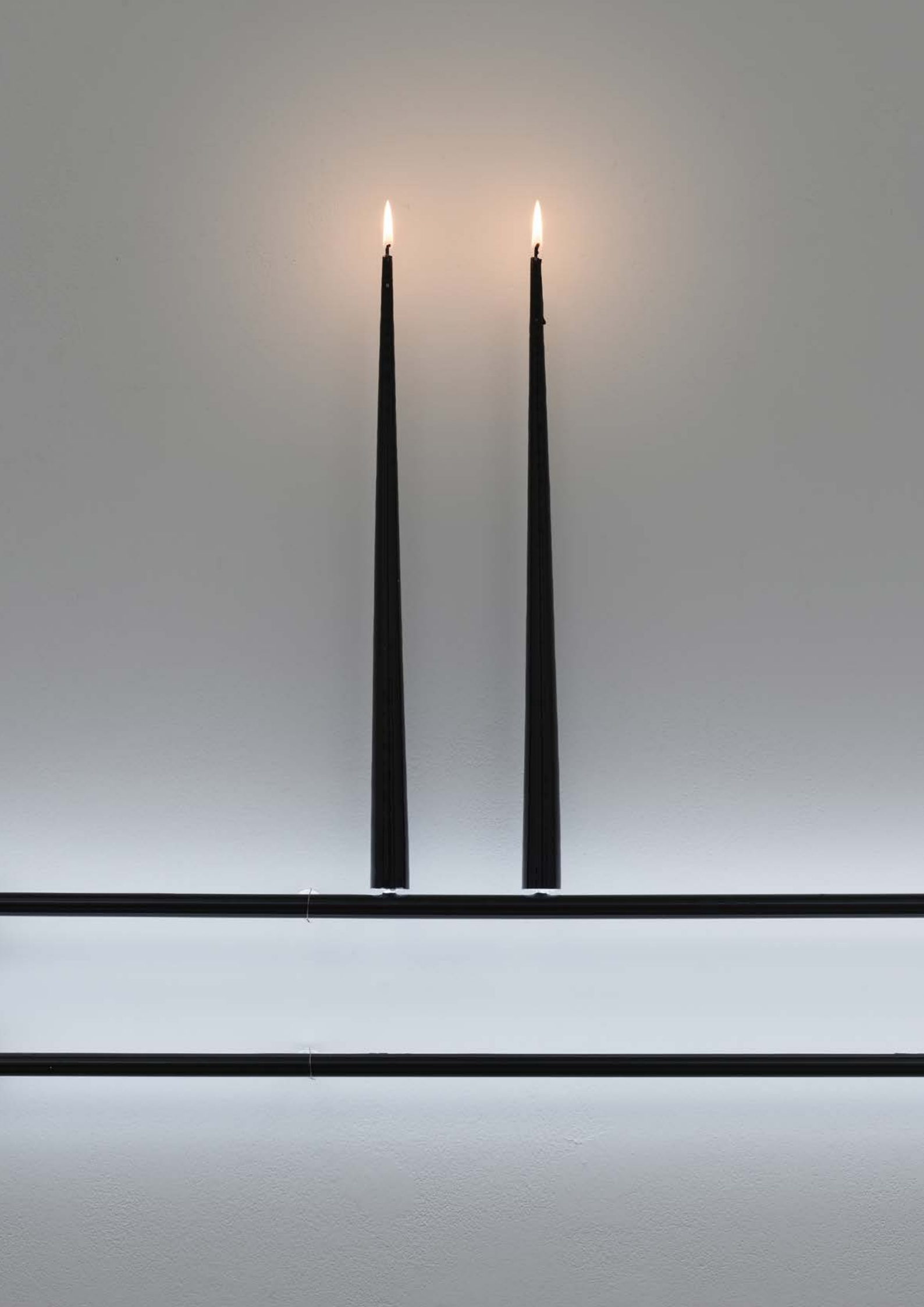
Edition of 1 and 1 AP

Neon: 180 × 1.5 cm | 70 $\frac{7}{8}$ × $\frac{5}{16}$ in.

Candle: 39.5 cm | 15 $\frac{5}{16}$ in.

GBP 65,000 *plus applicable taxes*





MINORU NOMATA

Continuum-12

2024

Acrylic on canvas

130.7 × 80.7 cm | 51 ⁷/₁₆ × 31 ³/₄ in.

USD 95,000 *plus applicable taxes*



MAGNUS PLESSEN

Smoke

2023

Acrylic, oil and charcoal on canvas

100 × 70 cm | 39 ³/₈ × 27 ⁵/₁₆ in.

EUR 80,000 *plus applicable taxes*



SALVADOR DALÍ

Paisatge amb telèfons sobre un plat (Landscape with telephones on a plate)

1939

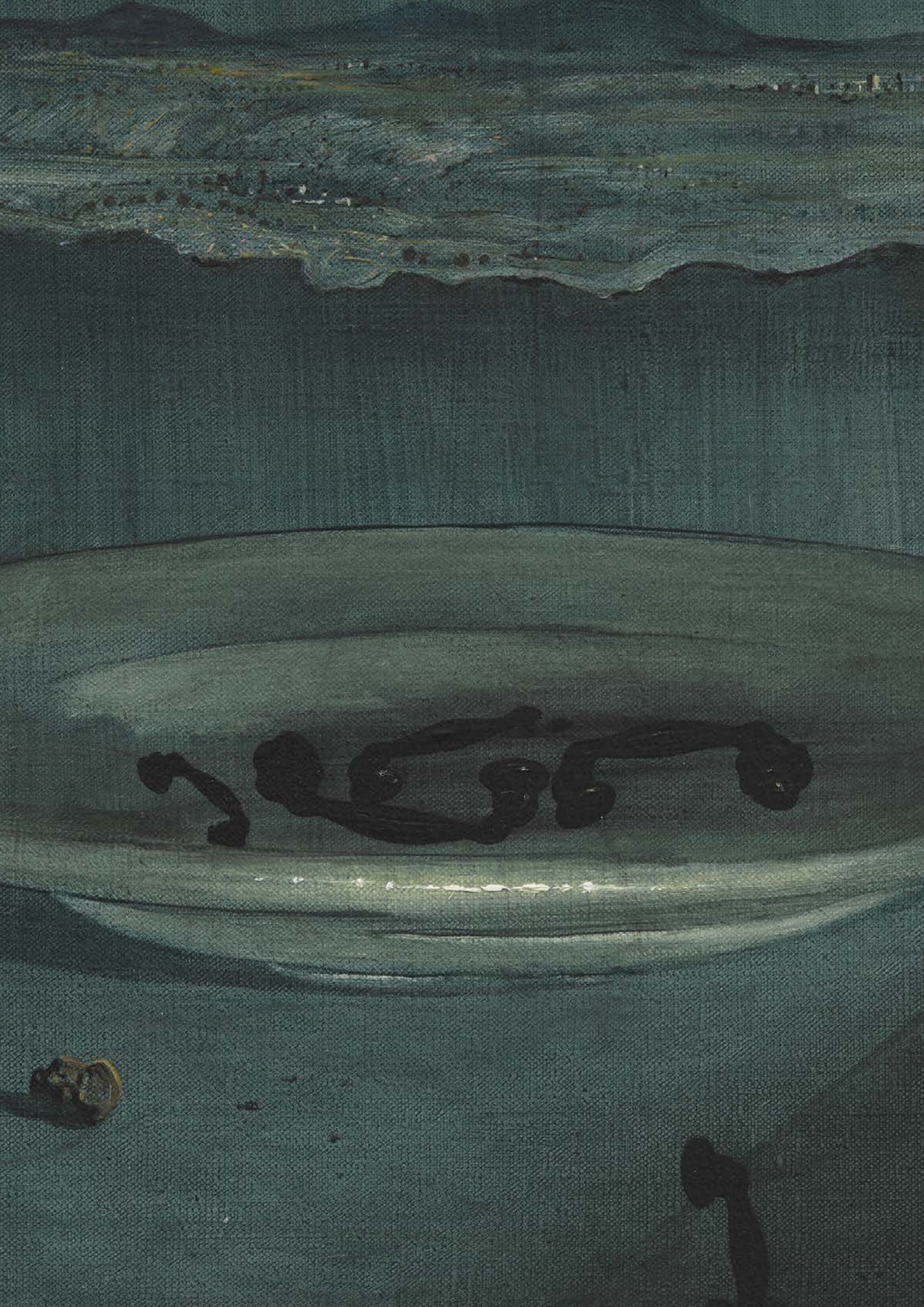
Oil on canvas

22 × 30 cm | 8 ¹/₆ × 11 ¹³/₁₆ in.

40 × 48 × 8 cm | 15 ³/₄ × 18 ⁷/₈ × 3 ¹/₈ in. (framed)

EUR 1,350,000 *plus applicable taxes*





SALVADOR DALÍ

Jeune fille au cerceau et montre molle
c.1932

Pen and black ink on paper

14 × 19.5 cm | 5 ½ × 7 ⅞ in.

37 × 42 × 2 cm | 14 ⅞ × 16 ⅞ × ⅞ in. (framed)

EUR 415,000 *plus applicable taxes*



SALVATORE EMBLEMA

Untitled

1969

Raw pigments on jute canvas

80 × 60 cm | 31 ½ × 23 ⅝ in.

83 × 63 × 2.5 cm | 32 ⅛ × 24 ⅜ × 1 in. (framed)

EUR 38,000 *plus applicable taxes*



PIER PAOLO CALZOLARI

Untitled

1973–74

Tobacco leaves, neon, candles, wax and metal

Overall: 105 × 145 × 12 cm | 41 $\frac{5}{16}$ × 57 $\frac{1}{16}$ × 4 $\frac{3}{4}$ in.

EUR 130,000 *plus applicable taxes*





DARREN ALMOND

Late Spring

2024

Gold and acrylic on linen

Left panel: 200 × 83.5 cm | 78 ¾ × 32 ⅞ in.

Right panel: 200 × 72 cm | 78 ¾ × 28 ⅞ in.

Overall: 205 × 160 × 7.5 cm | 80 ⅞ × 63 × 2 ⅞ in. (framed)

GBP 60,000 *plus applicable taxes*





SALVATORE EMBLEMA

Untitled

1965

Raw pigments and scratches on jute canvas

150 × 130 cm | 59 ¹/₁₆ × 51 ³/₁₆ in.

EUR 76,000 *plus applicable taxes*



IMI KNOEBEL

Gold Flag

2016

Transfer gold leaf on aluminium

82.6 × 125 cm | 32 ½ × 49 ¾ in.

USD 185,000 *plus applicable taxes*



ART BASEL PARIS PUBLIC PROGRAM



8 October – 5 November 2024
Cour de l'Hôtel de la Marine, 2 Place de la Concorde, 75008 Paris

TAKIS

Aeolian

1986

Painted iron and polystyrene spheres

613 × 500 × 500 cm | 241 $\frac{5}{16}$ × 196 $\frac{7}{8}$ × 196 $\frac{7}{8}$ in.

EUR 670,000 *plus applicable taxes*



White Cube participates in Art Basel Paris' 2024 Public Program, presenting an outdoor installation of Takis' large-scale kinetic sculpture *Aeolian* (1986) in the courtyard of the Hôtel de la Marine at Place de la Concorde. The work will be on view until 5 November 2024.



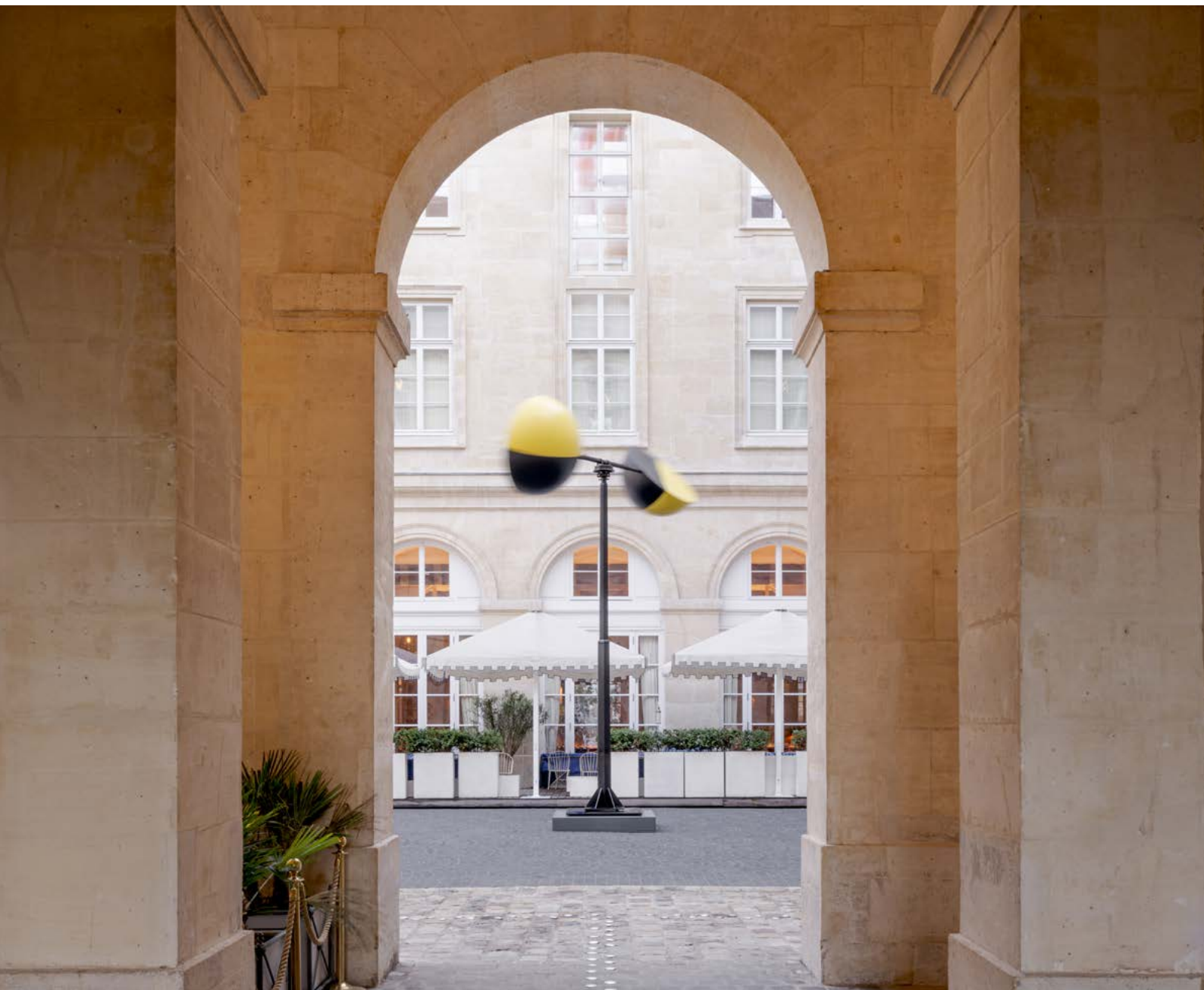


Photo © Antoine Huot

GALLERY EXHIBITIONS



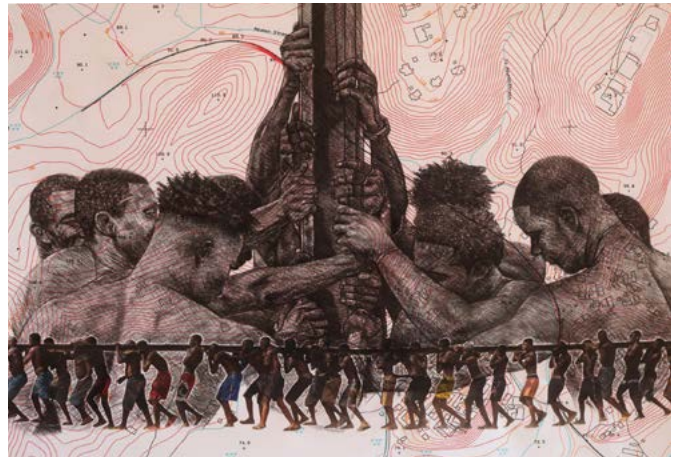
Tracey Emin
I followed you to the end
19 September – 10 November 2024
Bermondsey, London



Danh Vo
11 October – 16 November 2024
Mason's Yard, London



Sylvia Snowden
15 October – 16 November 2024
Paris



Ibrahim Mahama
A SPELL OF GOOD THINGS
5 September – 26 October 2024
New York



Gabriel Orozco
4 September – 14 December 2024
Seoul



Jessica Rankin
Sky Sound
20 September – 9 November 2024
Hong Kong

GALLERY INFORMATION

BERMONDSEY, LONDON

144 – 152 Bermondsey Street
London SE1 3TQ
+44 (0) 207 930 5373

Opening Times:
Tuesday – Saturday, 10am – 6pm
Sunday, 12 – 6pm

MASON'S YARD, LONDON

25 – 26 Mason's Yard
London SW1Y 6BU
+44 (0) 207 766 3550

Opening Times:
Tuesday – Saturday, 10am – 6pm

PARIS

10 avenue Matignon
75008 Paris
+33 (0) 1 87 39 85 97
By appointment

Opening Times:
Tuesday – Saturday,
10am – 12.30pm, 1.30 – 6pm

NEW YORK

1002 Madison Avenue
New York, NY 10075
+1 212 750 4232

Opening Times:
Tuesday – Saturday, 10am – 6pm

HONG KONG

50 Connaught Road Central
Hong Kong
+ 852 2592 2000

Opening Times:
Tuesday – Saturday, 11am – 7pm

SEOUL

6, Dosan-daero 45-gil
Seoul
+82 (0) 2 6438 9093

Opening Times:
Tuesday – Saturday, 10am – 6pm