

GALERIE

CHASTEL-MARÉCHAL

**TEFAF
NEW YORK 2026**

MAY, 14-19
BOOTH 318



ALBERTO & DIEGO GIACOMETTI



DIEGO GIACOMETTI (1902-1985)

'Torsade' coffee table, model created circa 1965, ours circa 1970

Bronze with an antic green patina

Signed 'Diego' in cursive letters on each upper joint of the legs and the X-shaped crossbar.

Height 40 cm (15 ¾ in) - Width 115,2 cm (45 ⅜ in) - Depth 69,4 cm (27 ⅜ in)

Certificate of authenticity issued by the SAS Expertises Vincenot - Philippe Meier, in accordance with the process established by the Diego Giacometti estate.

Commissioned by a major European industrial group in the early 1970s during renovation work on the reception rooms at its headquarters, it has been kept in its collection ever since.





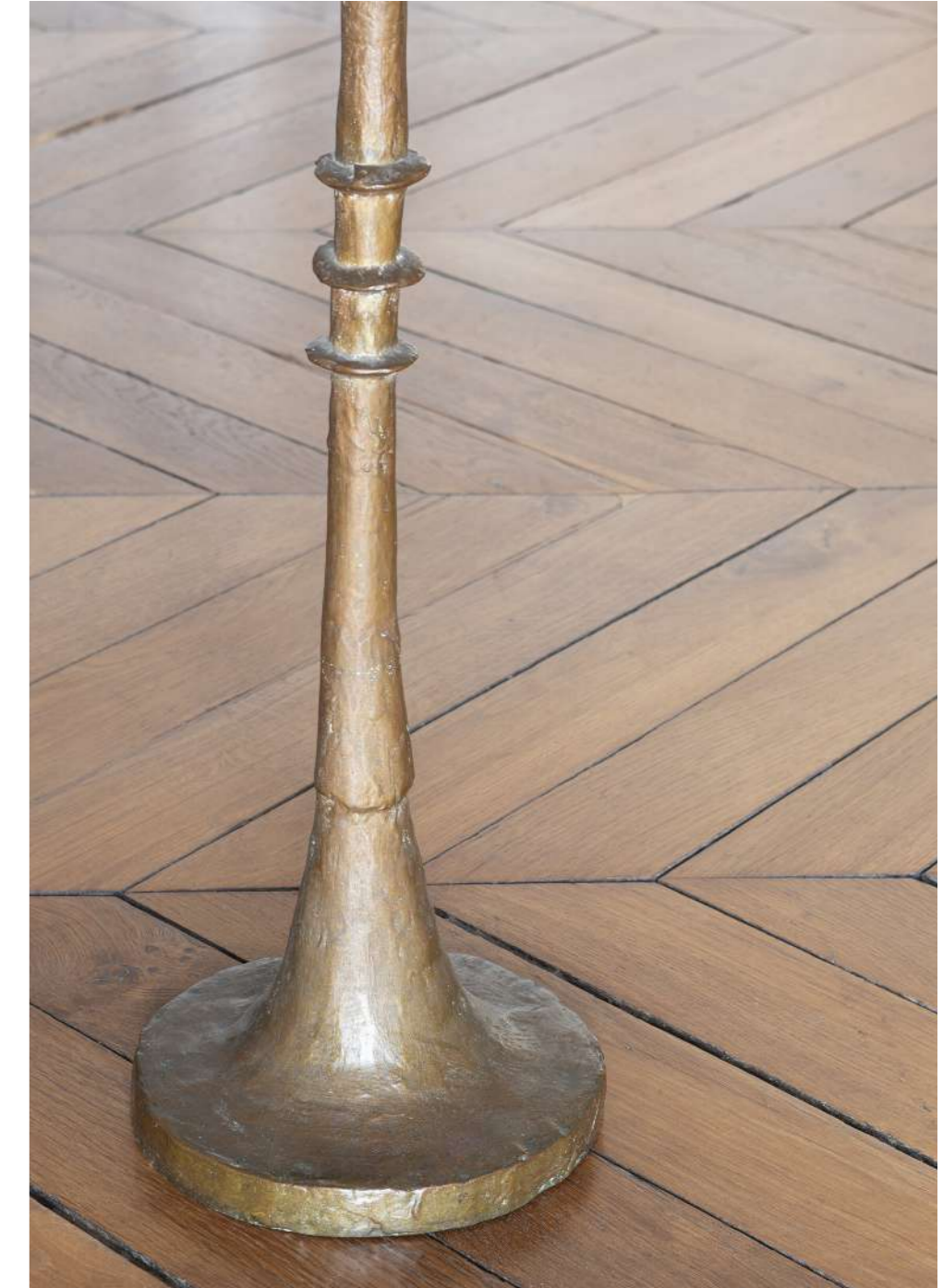


ALBERTO GIACOMETTI (1901-1966)

'Figure' floor lamp, circa 1936
Bronze with a golden patina
Signed 'AG' and numbered '083' on the foot and marked
'Made in France' under the foot.
Height of the bronze bole 156,2 cm (61 ½ in)

This piece is registered by the Fondation Alberto et
Annette Giacometti in the online database under the
number AGD 4779.

- Private collection of the comtess Mona Bismarck.
- Private collection, Paris, where there was also a pair
of stools by Pierre Chareau.



PIERRE CHAREAU



PIERRE CHAREAU (1883-1950)

Pair of curule 'M' shaped model, circa 1925

Burl wood veneered on mahogany

Each piece is signed with the artist's monogram under the seat.

Height 20 cm (7 ¾ in) - Width 24 cm (9 ½ in) - Depth 11 cm (4 ¼ in)

This pair comes with a certificate from Mr. Francis M. Lamond, specialist and author of numerous books on Pierre Chareau, dated from March, 11th, 2026.

-Private collection, Paris, France, purchased in the nineties at Drouot with an expertise from Mr. Félix Marcilhac.

- Stayed in this same private collection where there were numerous pieces of collectible design, including a «Figure» floor lamp by Alberto Giacometti.





PIERRE CHAREAU (1883-1950)

Pair of 'LA415-LA317' sconces called 'Mouche', circa 1925

Alabaster, metal

Height 29 cm (11 ½ in) - Width 25,5 cm (10 in) - Depth 14 cm (5 ½ in)

This pair comes with a certificate from Mr. Francis M. Lamond, specialist and author of numerous books on Pierre Chareau, dated from April, 20th, 2026.



JEAN ROYÈRE



JEAN ROYÈRE (1902-1981)

Wood panelling furniture, 1956

Wood, varnished straw, blue opaline

Height 85 cm (33 ½ in) - Width 269,5 cm (106 ⅛ cm) -

Depth 46,5 cm (18 ¼ in)

- Order placed in February 1956 directly with Jean Royère by Mr. M., for the interior design of the living room and dining room of his flat in Paris's 16th arrondissement.

- Thence by descent.



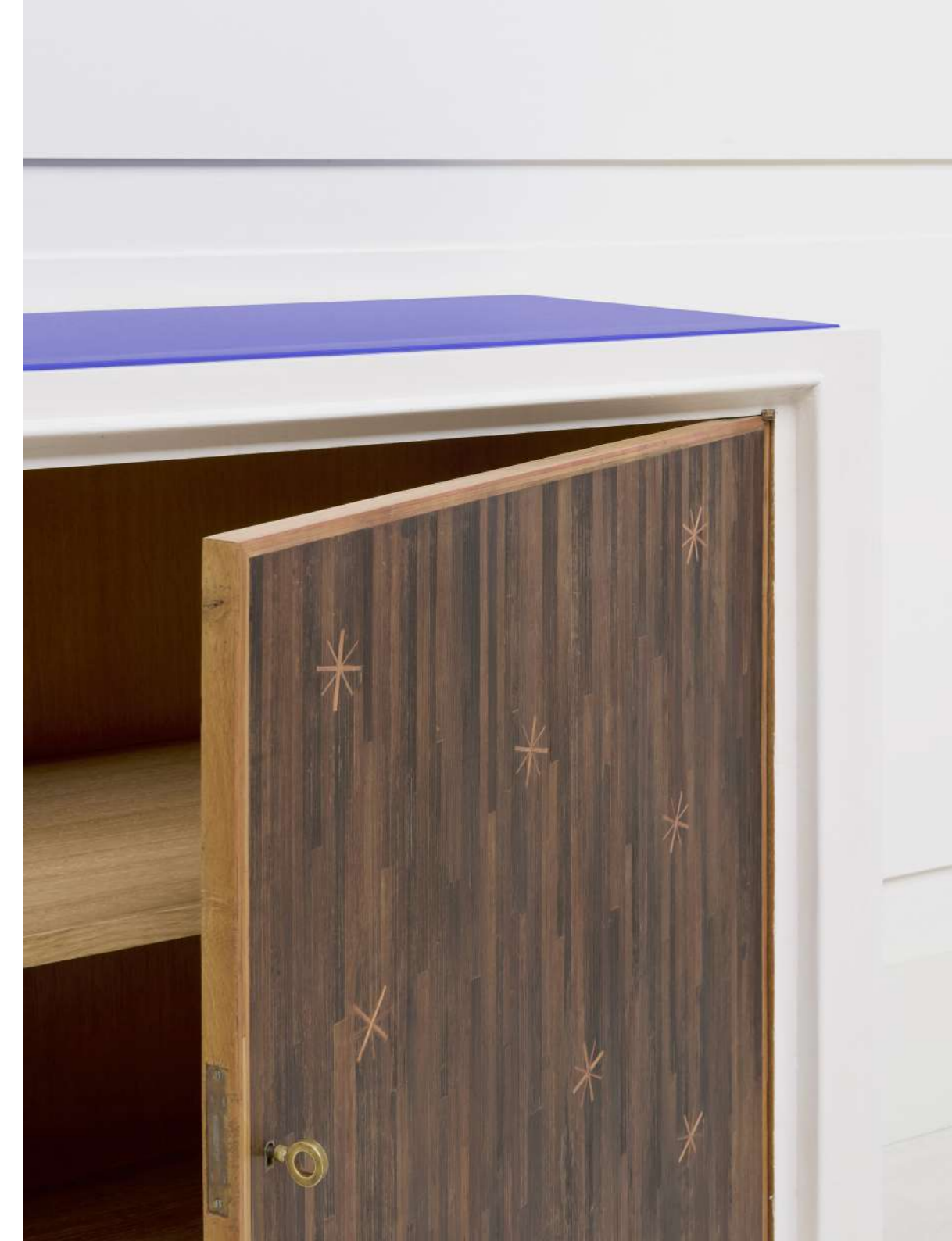
A UNIQUE PIECE OF PANELLED FURNITURE, COMMISSIONED IN 1956 BY MR M. FOR THE LIVING ROOM OF HIS FLAT IN THE 16TH ARRONDISSEMENT OF PARIS, DIRECTLY FROM JEAN ROYÈRE.

PHOTOGRAPH NO. 1568 FROM ALBUM VI, KEPT IN THE JEAN ROYÈRE ARCHIVES (MAD, PARIS), SHOWS OUR PIECE. IN THIS INTERIOR, THERE WERE ALSO A CURVED SIDEBOARD, A LIVING ROOM SET, SOME LIGHTS... A PART OF THE COLLECTION IS ILLUSTRATED IN MOBILIER & DÉCORATION, NOVEMBER, 1958.

WHEN MR. M'S SON INHERITED THE PIECE WE EXHIBIT, THE DIMENSIONS HAVE BEEN ADAPTED TO FIT THE INTERIOR: A DOOR HAS BEEN REMOVED. THE PIECE OF FURNITURE CAN THEN BE DISPLAYED ON ITS OWN.

THIS RECTANGULAR CABINET CONSISTS OF A WHITE-PAINTED MOULDED WOODEN BODY RESTING ON A SLIGHTLY RECESSED PLINTH. THE FAÇADE IS PUNCTUATED BY FOUR DOORS ENTIRELY INLAID WITH ORIGINAL STRAW, BEARING THE PATINA OF TIME, AND DECORATED WITH STARS. THIS CABINET FEATURES AN INTERIOR WITH THREE DRAWERS AND ADJUSTABLE SHELVES. EACH DOOR FEATURES AN ORIGINAL LOCK AND KEY. AT THE TOP, AN ORIGINAL BLUE OPALINE GLASS (IN TWO PIECES) ILLUMINATES THE WHOLE PIECE.

THIS PIECE IS REMARKABLE IN MANY RESPECTS. ITS PROVENANCE IS IMPECCABLE AND LENDS TO THE HISTORICAL AUTHENTICITY OF THE WORK, WHICH IS ALSO FORMALLY VERY INTERESTING. INDEED, THE SIMPLICITY OF ITS STRUCTURE HIGHLIGHTS THE STAR MOTIF REVEALED BY THE STRAW MARQUETRY. IN ADDITION TO THIS ORNAMENTATION, THE PROPORTIONS MAKE THIS PIECE PARTICULARLY INTERESTING. THE VOLUME OF THIS PIECE, TOGETHER WITH THE ELEGANCE OF THE STRAW MARQUETRY TECHNIQUE, CONTRASTS WITH THE MODERN FEEL OF THE BRIGHT COLOURS USED ON THE TOP, WHICH ARE SO CHARACTERISTIC OF JEAN ROYÈRE'S PALETTE.





JEAN ROYÈRE (1902-1981)

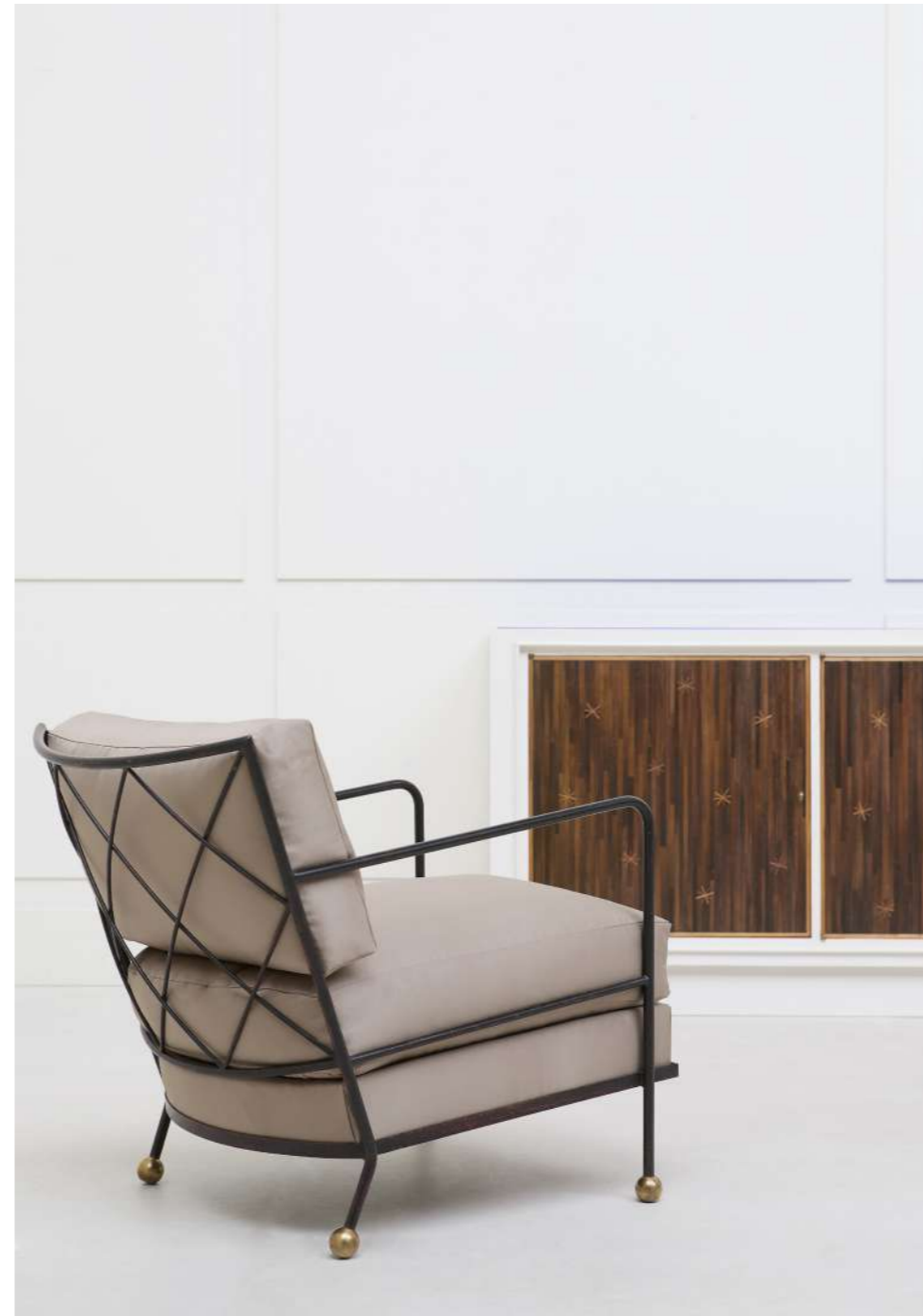
Pair of « Croisillons » armchairs, circa 1955 - from a set of four (two pairs are available)

Metal, fabric

Height 69 cm (27 1/8 in) - Width 58 cm (22 7/8 in) - Depth 84 cm (33 1/8 in)

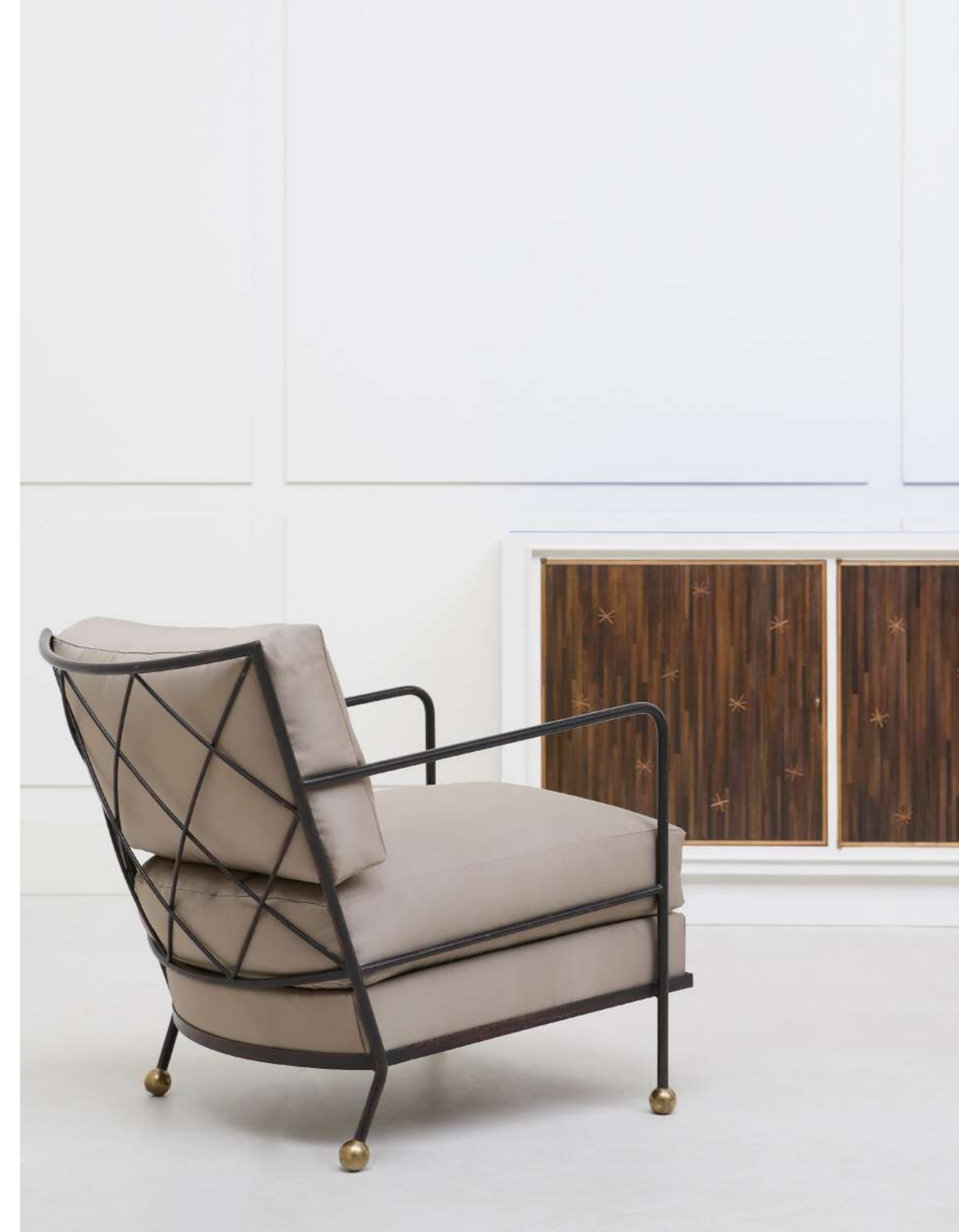
- Collection of Mrs F., Lebanon, circa 1948 - Important Jean Royère collection begun in 1948 through Nadim Majdalani, on the occasion of a special commission for a whole set, and completed over the years mostly during trips to Paris.

- Thence by descent.





FROM THIS COLLECTION, THE CHASTEL-MARÉCHAL GALLERY HAS ALREADY EXHIBITED A PAIR OF 'EIFFEL TOWER' STOOLS AND A 'PERSAN' FLOOR LAMP AT TEFAF NEW YORK 2025.





JEAN ROYÈRE (1902-1981)

Mirror, circa 1955

Wood, mirror

Height 103,5 cm (40 ¾ in) - Width 83 cm (36 ½ in)

- Collection of Charles and Marie Majdalani, Beirut, Lebanon, circa 1955 - Important Jean Royère collection begun around the start of the collaboration with Nadim Majdalani, the couple's cousin, on the occasion of a special commission for a whole set for their Beirut home, and completed by buying from L'Atelier, where Royère pieces were showcased in Beirut.
- Thence by descent.





THIS ICONIC PIECE FROM JEAN ROYÈRE'S OEUVRE STANDS OUT HERE FOR ITS PROPORTIONS, WHICH ARE AMONG THE LARGEST ON RECORD. ANOTHER SUBTLE DETAIL IS THAT THE CONSOLE TABLE RESTS ON TWO BALLS, WHEREAS IN THE MORE COMMON VERSIONS, THE METAL ANGLE BRACKET RESTS DIRECTLY ON THE FLOOR.

JEAN ROYÈRE (1902-1981)
'Tour Eiffel' console, circa 1955
Steel with a gunmetal finish, gilded brass, Belgian black marble
Height 90 cm (35 ¾ in) - Width 160 cm (63 in) - Depth 36 cm (14 ¼ in)

- Private collection, Paris, France, circa 1960.
- Collection of Mr. M. & Ms C., purchased in the 90's in Paris, France.
- Thence by descent, collection of MM. M., Paris, France.



GEORGES JOUVE





GEORGES JOUVE (1910-1964)

'Cylindre' (large model), circa 1955
Black enamelled ceramic
Signed 'Jouve' and with the 'Alpha' cypher under the base.
Height 36,5 cm (14 ³/₈ in) - Diameter 32,5 cm (12 ³/₄ in)

'Cylindre', circa 1955
Black enamelled ceramic
Signed 'Jouve' and with the 'Alpha' cypher under the base.
Height 30,5 cm (12 in) - Diameter 25,5 cm (10 in)



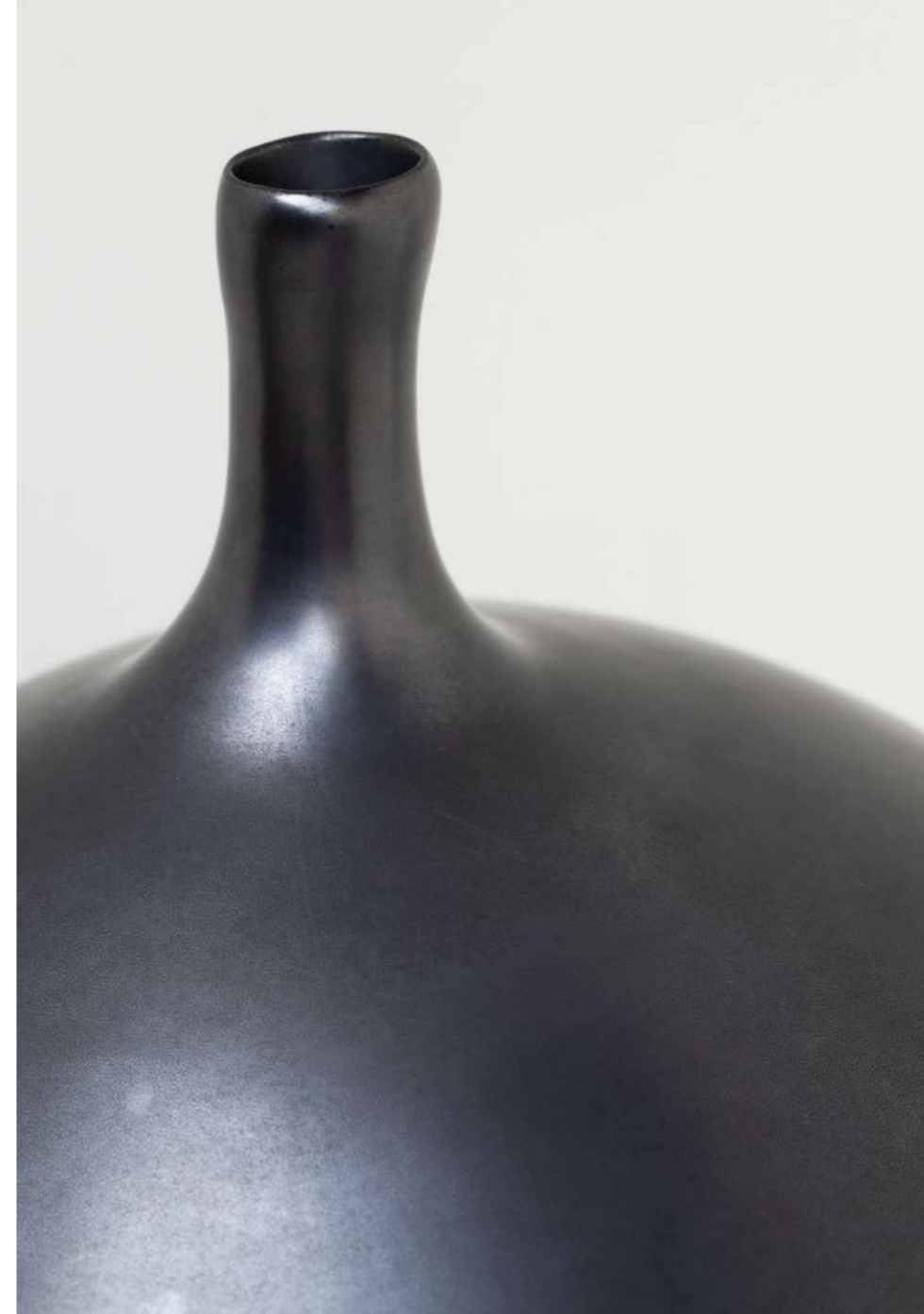


GEORGES JOUVE (1910-1964)
« Fernandel », circa 1955
Black enameled ceramic
Signed 'Jouve' and with the 'Alpha' cypher under the
base.
Height 50,5 cm (19 7/8 in) - Diameter 13 cm (5 1/8 in)



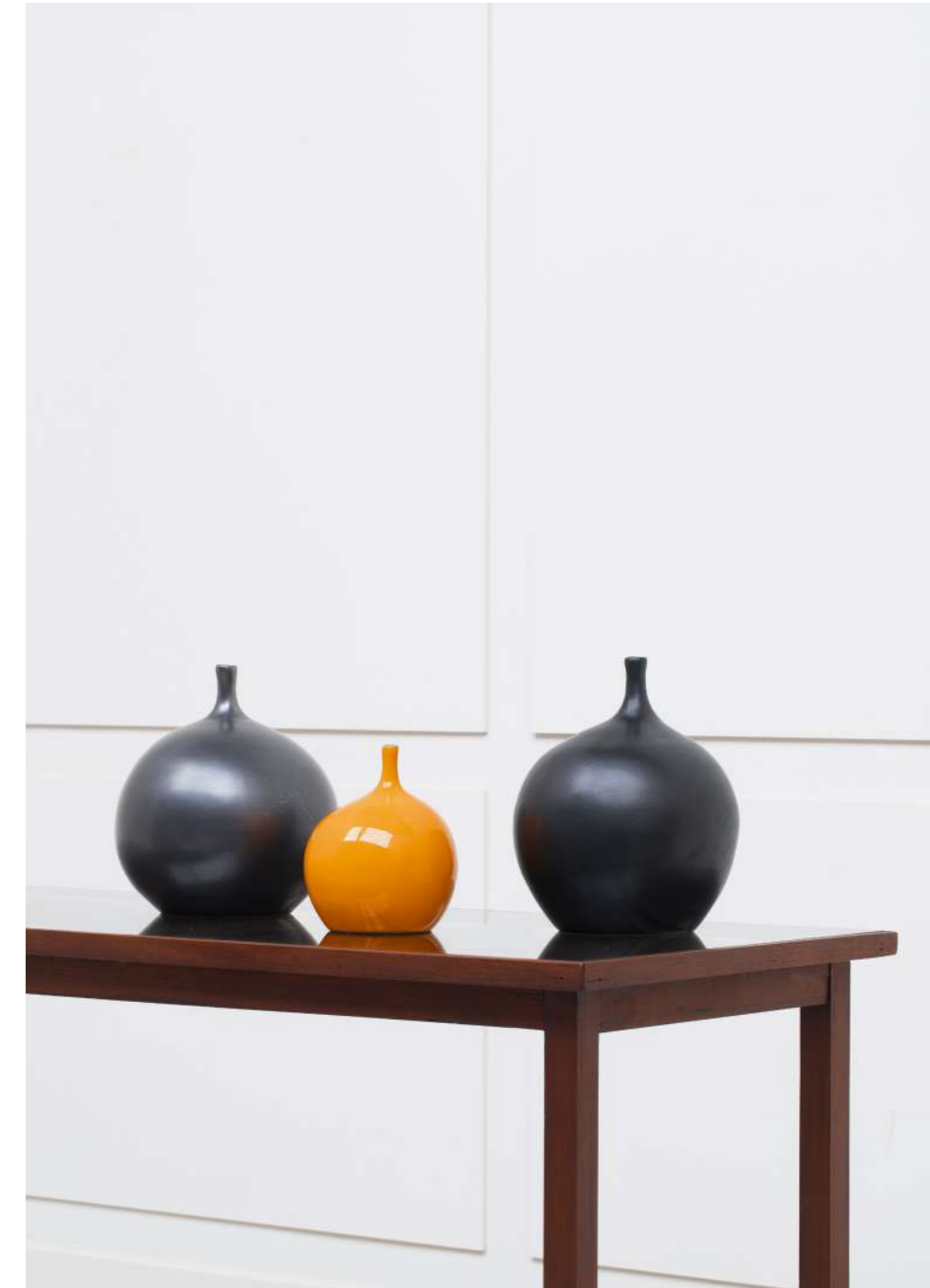


GEORGES JOUVE (1910-1964)
'Pomme', circa 1960
Black enameled ceramic
Signed 'Jouve' and with the 'Alpha' cypher under the
base.
Height 28 cm (11 in) - Diameter 23 cm (9 in)





GEORGES JOUVE (1910-1964)
'Pomme', circa 1960
Orange enameled ceramic
Signed 'Jouve' and with the 'Alpha' cypher under the
base.
Height 18,5 cm (7 ¼ in) - Diameter 16,5 cm (6 ½ in)



GUY DE ROUGEMONT





'CURVES BRING PEOPLE TOGETHER. ALL WE HAVE TO DO
IS LOOK UP, AND EVERY CLOUD EVOKES ITS SINUOUS LINES'

Guy de Rougemont, MAD, Paris, 1990

GUY DE ROUGEMONT (1935-2021)
Rug, circa 1978
Wool
Length 372 cm (146 ½ in) - Width 290 cm (114 ⅛ in)

- Private collection, East of France, where there was
another similar model with blue shades



CÉSAR





CESAR (1921-1998)
'Expansion n°46', circa 1973
White polyurethane foam
Height 154,5 cm (60 ⁷/₈ in) - Width 139 cm (54 ³/₄ in) -
Depth 17 cm (6 ³/₄ in)

Referenced under the number 1628 in the archives
Denyse Durand-Ruel. This piece comes with a
certificate from her archives.

- Yves Gastou's collection, Paris, France.



LINE VAUTRIN



LINE VAUTRIN (1913-1997)

'Folie' or 'Le Soleil a rendez-vous avec la lune', circa 1965

Talose, mirrors

Signed 'Line Vautrin' on the back.

Height 60 cm (23 ½ in) - Width 81 cm (31 ¾ in)

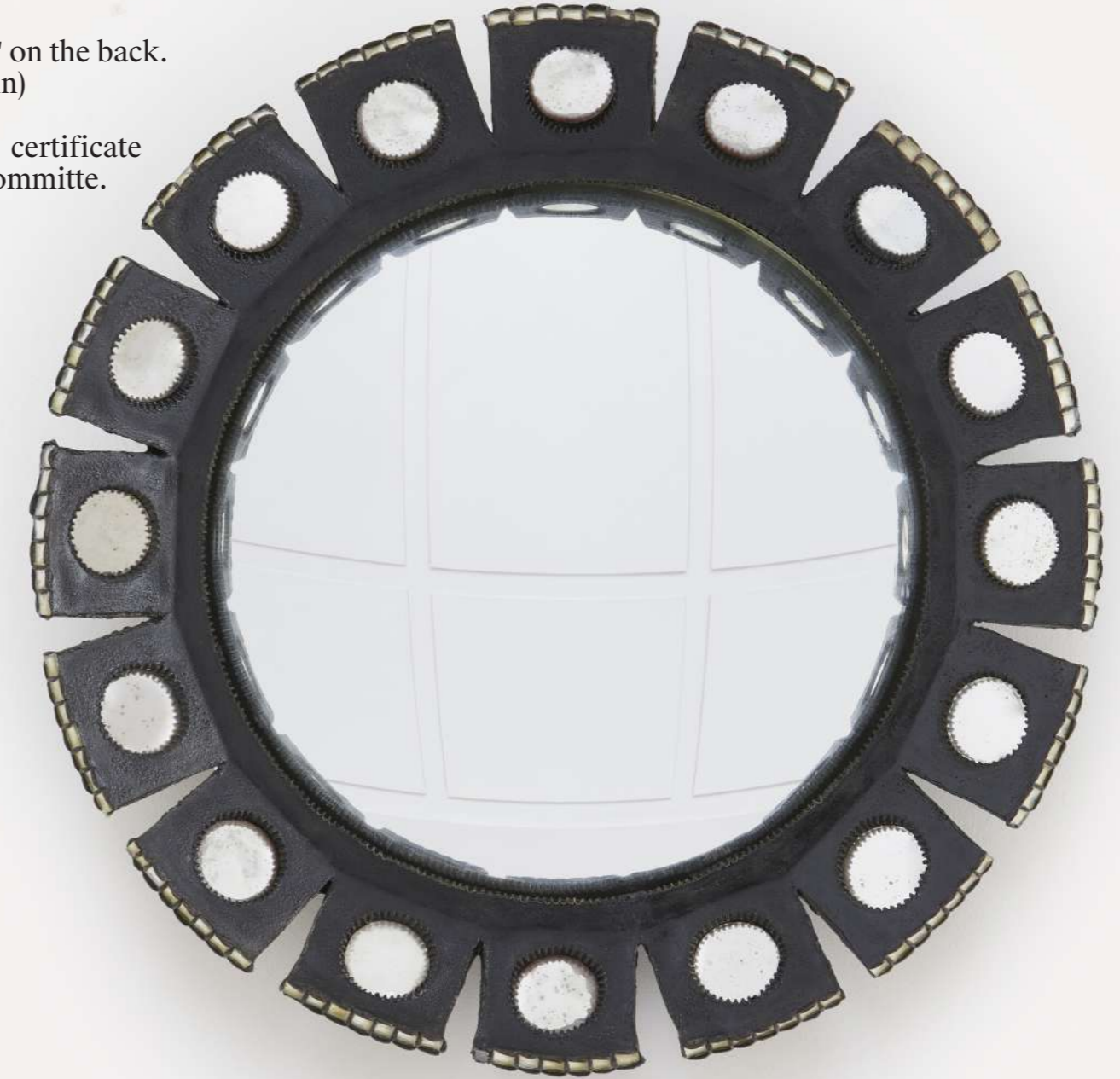
This piece comes with a certificate from the Line Vautrin Committee.





LINE VAUTRIN (1913-1997)
'Mazarin', circa 1965
Talasel, mirrors
Signed 'Line Vautrin XII' on the back.
Diameter 41,5 cm (16 ½ in)

This piece comes with a certificate
from the Line Vautrin Committee.





LINE VAUTRIN (1913-1997)
'Mazarin' (small model), circa 1965
Talosel, mirrors
Signed 'Line Vautrin' on the back.
Diameter 32 cm (12 ½ in)

This piece comes with a certificate from
the Line Vautrin Committe.





LINE VAUTRIN (1913-1997)
'Soleil à pointes n°0', circa 1955
Talousel, mirrors
Signed 'Line Vautrin' on the back.
Diameter 12,5 cm (4 7/8 in)

This piece comes with a certificate from
the Line Vautrin Committe.



LINE VAUTRIN (1913-1997)

'Dahlia', circa 1955-1960

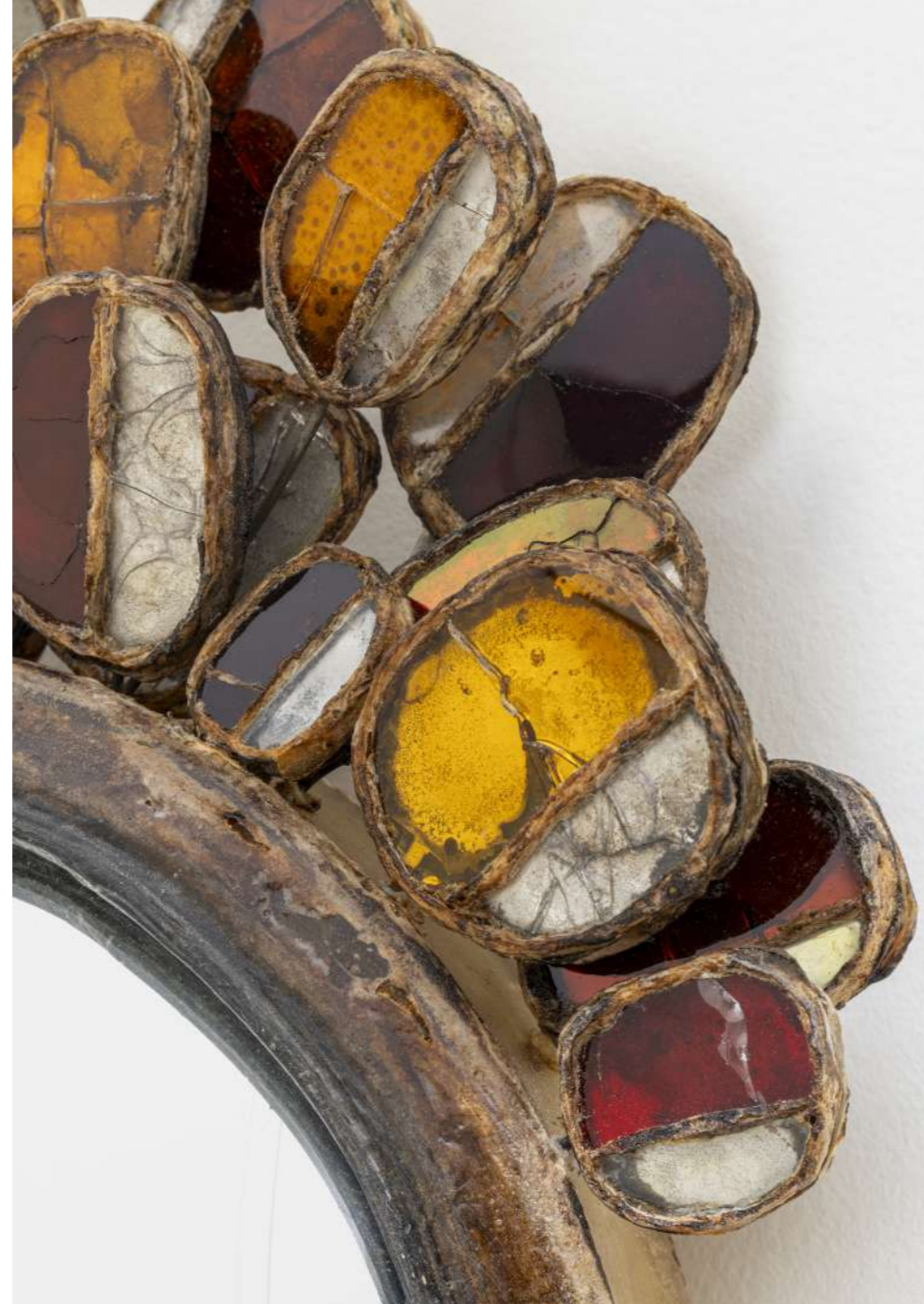
Talasel, mirrors

Signed 'Line Vautrin' and stamped 'ROI' on the back.

Diameter 25,5 cm (10 in)

This piece comes with a certificate from the Line Vautrin Committee.





LINE VAUTRIN (1913-1997)
'Perruque', circa 1965
Talasel, mirrors
Signed 'Line Vautrin' on the back.
Height 37,5 cm (14 ¾ in) - Width 28,5 cm (11 ¼ in)

This piece comes with a certificate from
the Line Vautrin Committee.



LINE VAUTRIN (1913-1997)

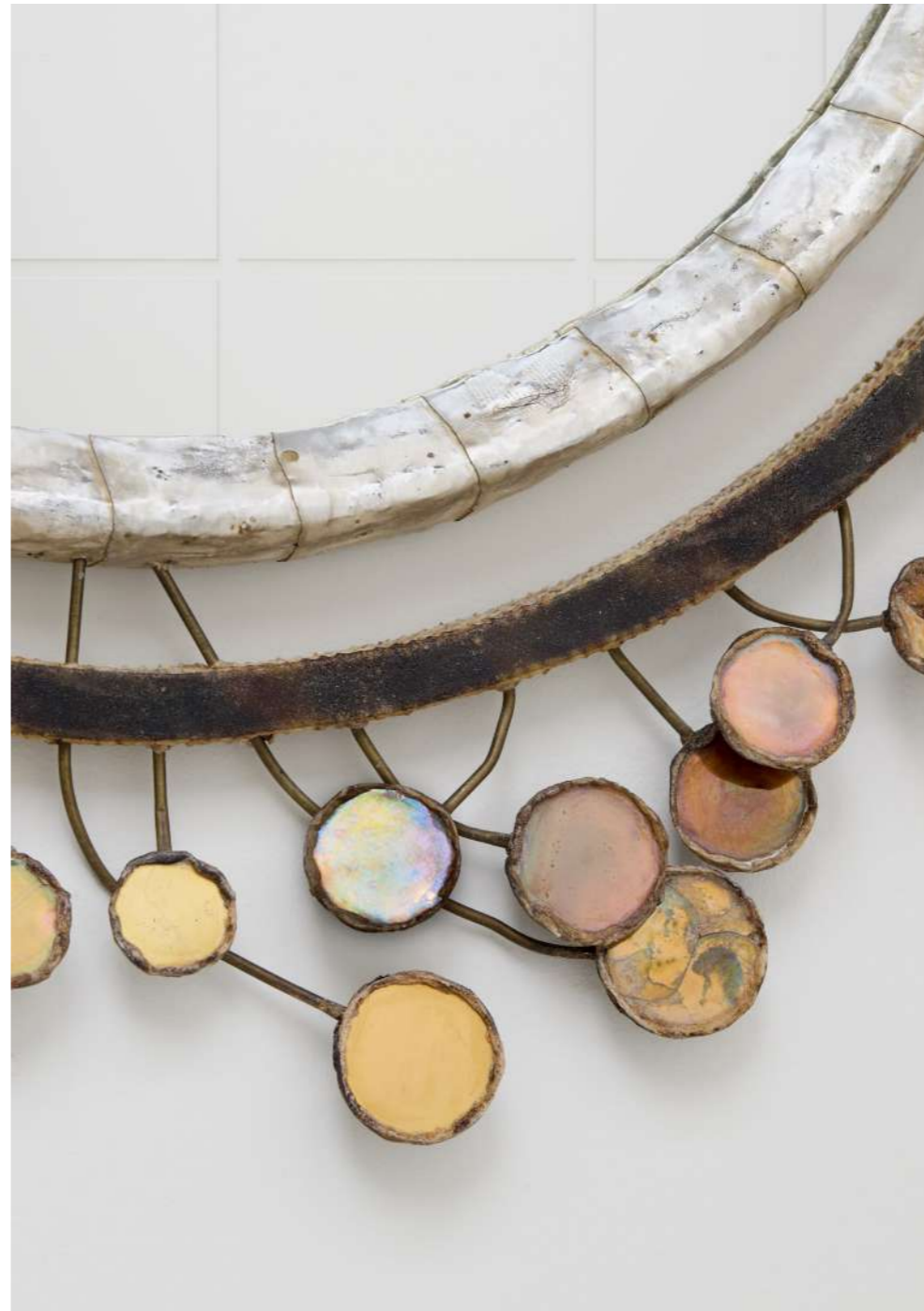
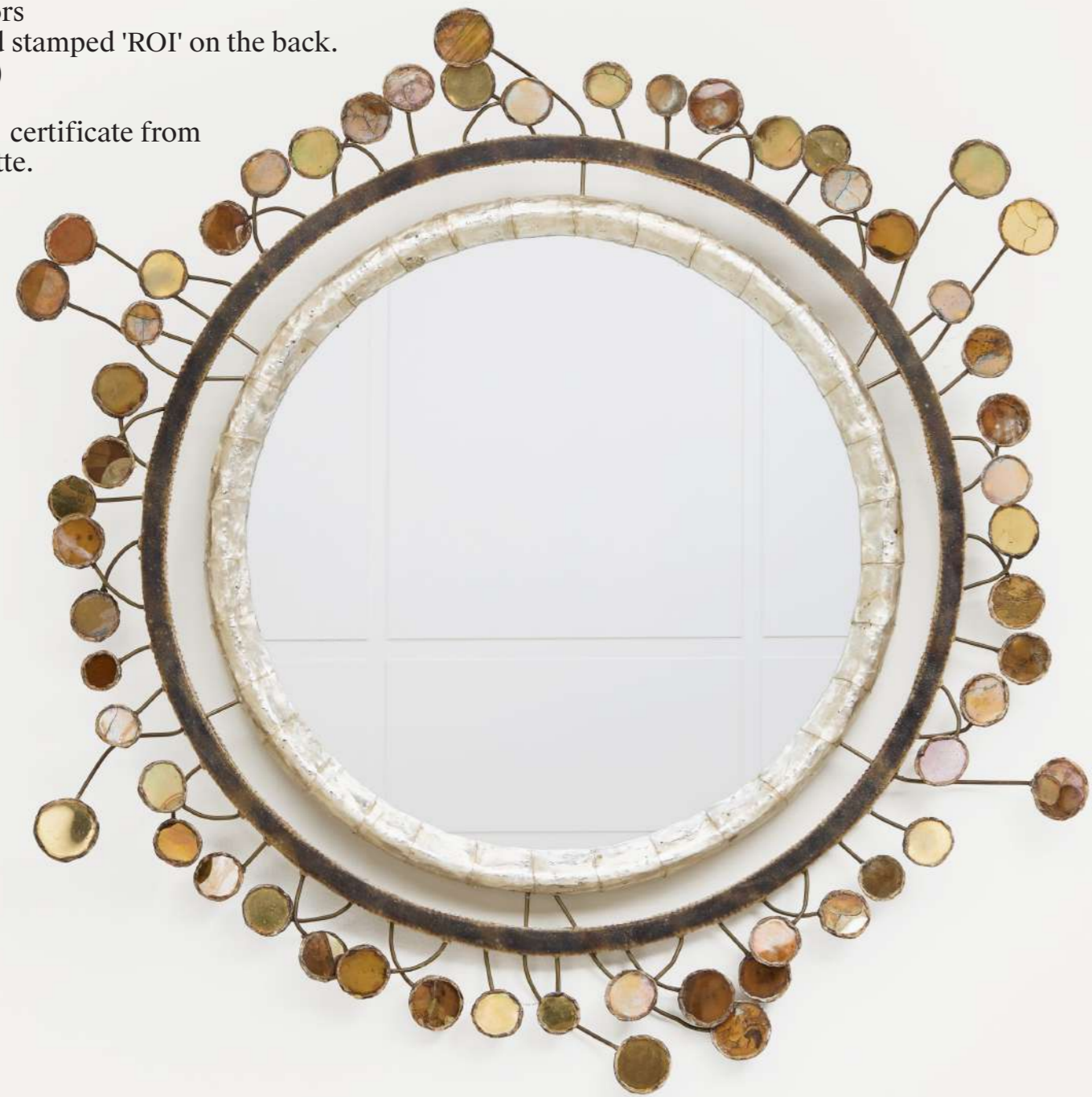
'Sequins', circa 1955-1960

Talose, lumaline, mirrors

Signed 'Line Vautrin' and stamped 'ROI' on the back.

Diameter 57 cm (22 ½ in)

This piece comes with a certificate from the Line Vautrin Committee.



LINE VAUTRIN (1913-1997)

'Tudor' (small model), circa 1955

Talose, mirrors

Signed 'Line Vautrin' and 'Made in France' on the back.

Diameter 27 cm (10 5/8 in)

This piece comes with a certificate from the Line Vautrin Committee.



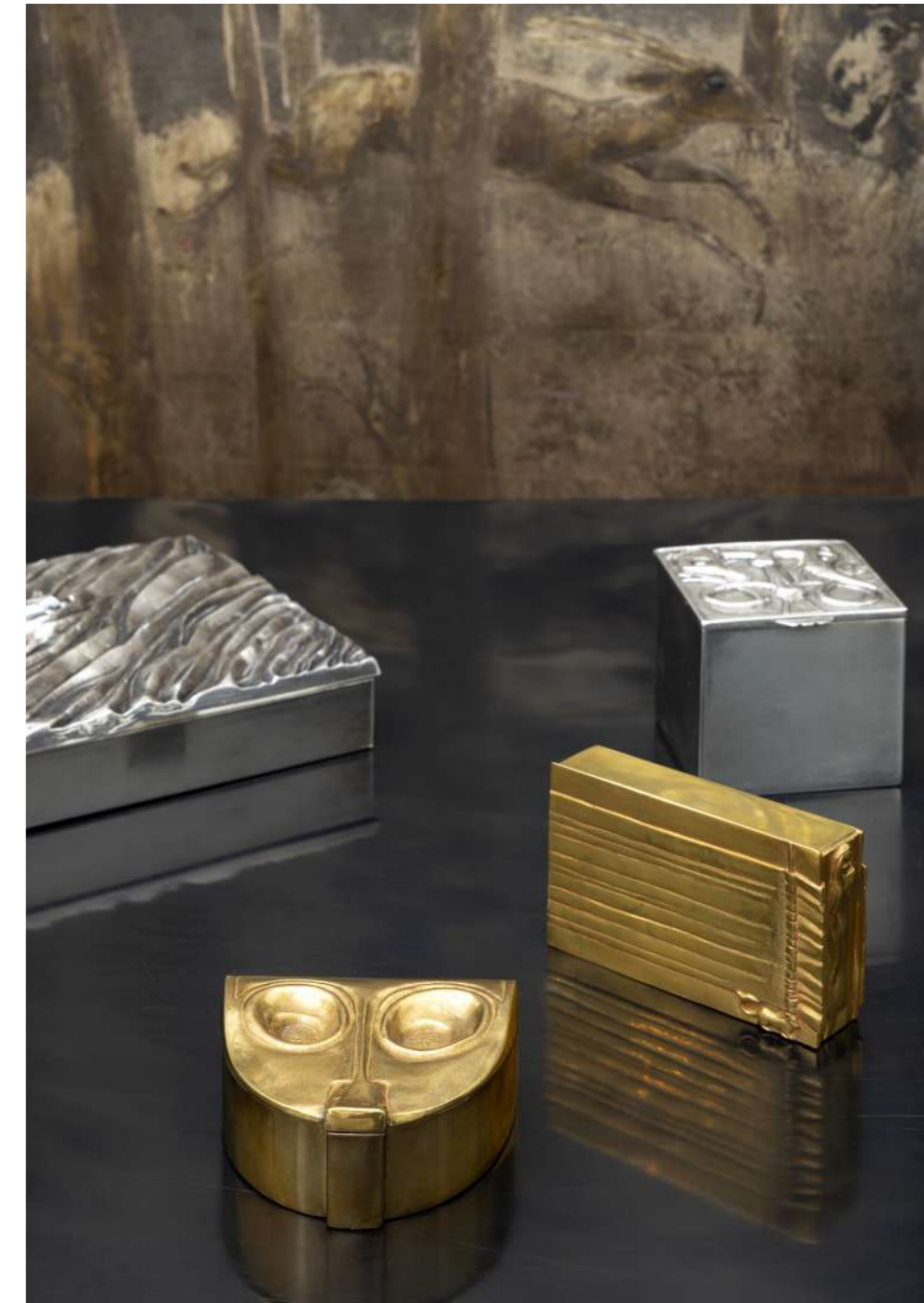
LINE VAUTRIN (1913-1997)

'Le loup et le renard', circa 1945

Silvered bronze, cork

Stamped 'Line Vautrin' underneath.

Height 6,7 cm (2 ¾ in) - Width 7 cm (2 ¾ in) - Depth 7 cm (2 ¾ in)





LINE VAUTRIN (1913-1997)
'Le Roi Soleil, Le Roi Lion', circa 1945
Gilded bronze, cork
Stamped 'Line Vautrin' underneath.
Height 2,9 cm (1 1/8 in) - Width 11,1 cm (4 3/8 in) - Depth 6,4 cm (2 1/2 in)



LINE VAUTRIN (1913-1997)

'La mer', circa 1945

Silvered bronze, cork

Stamped 'Line Vautrin' underneath.

Height 3,5 cm (1 ¼ in) - Width 17,4 cm (6 ¾ in) - Depth 14,3 cm (5 ¾ in)



GALERIE

CHASTEL-MARÉCHAL

**TEFAF New York
Park Avenue Armory
May, 14th to 19th
Booth 318
contact@chastel-marechal.com**

5, Rue Bonaparte,
75006, Paris, France

+33 (0)1 40 46 82 61
contact@chastel-marechal.com

chastel-marechal.com
[@galeriechastelmarechal](https://www.instagram.com/galeriechastelmarechal)