

EYKYN • MACLEAN

TEFAF NY 2026



Maurice de VLAMINCK 1876-1958

Arbres à la maison bleue

oil on canvas

21 1/2 x 25 3/4 in. (54.5 x 65.5 cm)

Painted in 1906



Georges BRAQUE 1882-1963

L'Estaque

signed *G Braque* (lower left)

oil on canvas

14 3/4 x 18 3/4 in. (37.5 x 47.6 cm)

Painted *circa* 1906



Alexej JAWLENSKY 1864-1941

Mit rundem Tisch

oil on board

22 x 20 in. (55.8 x 50.8 cm)

Painted *circa* 1910



Henry MOORE 1898-1986

Seated Figures

signed and dated *Moore 48* (lower right)

gouache, wax crayon, brush and ink on paper, laid on card

11 1/2 x 9 1/2 in. (29.2 x 24.2 cm)

Executed in 1948



Barbara HEPWORTH 1903-1975

Crescent Form

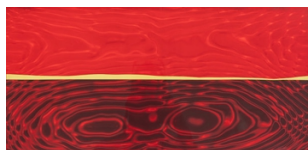
signed, titled and dated (verso)

oil and pencil on board

12 5/8 x 9 in. (32 x 23 cm)

Painted in 1952

EYKYN • MACLEAN



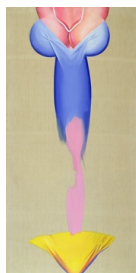
Roy Lichtenstein 1923-1997

Seascape with Dunes

Magna on paper pasted on Rowlux, over black paper mounted on board

11 x 23 1/8 in. (28.1 x 58.6 cm)

Executed in 1965



Allen JONES b. 1937

Female Spear

signed, dated, and titled *Allen Jones / 65/66 'Female Spear'* (top overlap)

oil on canvas

71 5/8 x 35 7/8 in. (182 x 91 cm)

Painted in 1965-66



Frank BOWLING b. 1934

Mother's House with Beware of the Dog

acrylic on silkscreen print on canvas

57 1/8 x 47 5/8 in. (145 x 121 cm)

Painted in 1966



Frank AUERBACH 1931-2024

Head of J.Y.M.

oil on board

28 x 24 1/8 in. (71 x 61 cm)

Painted in 1973



Yayoi KUSAMA b. 1929

Nets 45

signed, titled, and dated (verso)

acrylic on canvas

13 x 9 3/4 in. (33 x 24.8 cm)

Painted in 1998