

APPLICAT-PRAZAN

Press release

APPLICAT-PRAZAN

is pleased to announce its participation in

Art | Basel

19 - 22 June 2025



Serge POLIAKOFF (1900 - 1969)
Composition abstraite, 1954
Signed and dated lower left
Oil on canvas
89 x 116 cm

On the occasion of its participation in **ART BASEL 2025**, which will be held from **19 to 22 June 2025**, Applicat-Prazan will be showing a selection of important paintings including works by **Serge Poliakoff**, **Pierre Soulages**, **Nicolas de Staël** and **Zao Wou-ki**.

APPLICAT-PRAZAN
Rive gauche
16 rue de Seine - 75006 Paris

APPLICAT-PRAZAN
Rive droite
14 avenue Matignon - 75008 Paris

Lignes groupées: tel +33 (0) 1 43 25 39 24 - fax +33 (0) 1 43 25 39 25 - galerie@applicat-prazan.com - www.applicat-prazan.com
APPLICAT - SAS au capital de 12 000 € - 390 477 255 RCS PARIS - NAF 4779Z - TVA FR 25390477255
Siège social et adresse de correspondance: 16 rue de Seine - 75006 Paris - France

APPLICAT-PRAZAN

For this new edition of Art Basel, we will present *Composition abstraite*, 1954 by **Serge Poliakoff** (1900 - 1969) one of the most prominent painters of the Nouvelle Ecole de Paris and a major artist of post-war lyrical abstraction. For Poliakoff, creating a painting was a process of searching for harmony. This composition is remarkable both by its size and by the variety of forms with which the colours freely combine to create a pure pictorial space. These fields of colour, in which red predominates, give rhythm to the composition and allow the material to vibrate. This is one of the artist's finest achievements. The work has been part of two private collections, including that of French antique dealer Jacques Helft.

We are particularly pleased to present side-by-side two exceptional paintings by **Pierre Soulages** (1919 - 2022), created in 1955 and 1956, in perfect stylistic harmony.

In the history of Soulages' painting, the 1950s were years of great experimentation. His work began to gain international recognition, especially in the United States, where art dealer Samuel Kootz exhibited his work at his New York gallery. *Peinture 130 x 88.5 cm, October 30, 1955*, was exhibited in his New York gallery.

The second, *Peinture 130 x 89 cm, March 8, 1956*, of the same size and importance, is a perfect match for the first.

From 1955 to 1959, different types of paintings can be distinguished (not necessarily in chronological order).

In these two remarkable paintings, very similar in composition, the brushstrokes move away from the stiffness of the earlier pieces. While maintaining vertical lines, the brushstrokes here overlap and create a dynamism that, together with the transparency of the background, creates a tension of forms in perfect balance.

We are delighted to present two of the most remarkable examples of Pierre Soulages' eclectic output, in which he reached true artistic maturity.

Alongside these two exceptional works by Soulages, we will present a work by **Nicolas de Staël** (1914 - 1955) one of the most fascinating painters of the 20th century. The very early 1950s (he took his own life in March 1955) were an essential turning point in his life and work. He discovered the light of the Midi and the astonishing beauty of this land, fell in love with a woman and at the same time experienced deep solitude, great tension and anxiety as he awaited his exhibition at Paul Rosenberg's gallery in New York. All this had a profound effect on him, and gave rise to some extraordinary works. We present *Composition-Paysage*, from 1953. Composed of luminous blocks in thick layers and sober colours, this painting has all the beauty, elegance and splendour of his most prestigious works. A true masterpiece that exemplifies the greatness of a man who, as Pierre Wat wrote, even in the face of despair as an artist, remained "until the end in the face of beauty".

We will also be showing another major work: *Orchidées*, a 2006 painting by **Zao Wou-ki** (1920 - 2013). For years, it was part of the painter's personal collection. Presented in 2008-2009 at the Musée national des Beaux-Arts du Québec, during an exhibition in homage to Jean-Paul Riopelle, whom Zao met in Paris when he arrived in the late 1940s.

In this oil painting, Zao Wou-ki expresses the richness of the techniques he used to achieve harmony with nature, the lightness of his brushstrokes, the finesse of his colours (here in shades of pink and violet), the treatment of light and the creation of new spaces. Influenced by Taoist precepts on nature and the spiritual qualities of water and air, Zao Wou-ki has remained faithful to this aesthetic throughout his career, and this is clearly visible in this unique work.

APPLICAT-PRAZAN

Rive gauche

16 rue de Seine - 75006 Paris

APPLICAT-PRAZAN

Rive droite

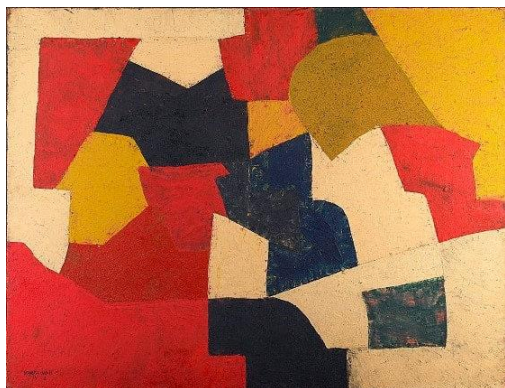
14 avenue Matignon - 75008 Paris

Lignes groupées: tel +33 (0) 1 43 25 39 24 - fax +33 (0) 1 43 25 39 25 - galerie@applicat-prazan.com - www.applicat-prazan.com

APPLICAT - SAS au capital de 12 000 € - 390 477 255 RCS PARIS - NAF 4779Z - TVA FR 25390477255

Siège social et adresse de correspondance: 16 rue de Seine - 75006 Paris - France

Available images

**Serge POLIAKOFF (1900 - 1969)**

Composition abstraite, 1954

Signed and dated lower left

Oil on canvas

89 x 116 cm

Provenance:

Former Helft collection, Paris

Important private collection, Paris

Exhibitions:

Paris, Applicat-Prazan, Serge Poliakoff, 27 March - 26 Apr. 2008, cat., ill. f/p col. p. 37

Literature:

Alexis Poliakoff, Serge Poliakoff, catalogue raisonné, vol. I, 1922 - 1954, Acatos, Paris 2004, n° 54-06, ill. col. p. 482

**Pierre SOULAGES (1919 - 2022)**

Peinture 130 x 88,5 cm, 30 octobre 1955, 1955

Oil on canvas

Signed lower right; Signed and dated on the reverse

130 x 88,5 cm

Provenance:

Kootz Gallery, New York

Parish Press, New York

Garando Gallery, Nagoya

Important private collection

Exhibitions:

Nagoya, Garando Gallery, Group Show, 1991, ill.

Tokyo, Art Museum, Calligraphy and Painting, 25 Jan. - 26 Feb. 1992, ill.

Literature:

Pierre Encrevé, Soulages, l'œuvre complet, Peintures, Vol. I. 1946 - 1959, Seuil, Paris November 1994, n° 198, ill. col. p. 200



Pierre SOULAGES (1919 - 2022)

Peinture 130 x 89 cm, 8 mars 1956, 1956

Signed and dated lower right; Signed on the reverse

Oil on canvas

130 x 89 cm

Provenance:

Stangl gallery, Munich, 1956

Gerald Fineberg collection, USA

Literature:

Pierre Encrevé, Soulages, l'œuvre complet, Peintures, Vol. II. 1959 - 1978, Seuil, Paris November 1995, n° 224, ill. col. p. 200



Nicolas de STAËL (1914 - 1955)

Composition-Paysage, 1953

Oil on canvas

54 x 73 cm

Provenance:

Private collection, France

Exhibitions:

Le Havre, MuMa, 7 Jul. - 9 Nov. 2014, Nicolas de Staël - Lumières du Nord / Lumières du Sud, cat 56, ill. col. p. 104

Aix-en-Provence, Hôtel du Caumont, Nicolas de Staël en Provence, 4 May - 23 Sept. 2018, cat., ill. col. p. 117

Literature:

Jacques Dubourg, Françoise de Staël, Nicolas de Staël, Catalogue raisonné des peintures, éditions Le Temps, Paris 1968, n° 642, ill. b/w p. 273

Françoise de Staël, Nicolas de Staël, Catalogue raisonné de l'œuvre peint, Ides et Calendes, Neuchâtel 1997, n° 642, ill. p. 435

Françoise de Staël, revised by Marie du Bouchet and Gustave de Staël, assisted by Murielle Zucchelli, Nicolas de Staël, Catalogue raisonné de l'œuvre peint, Editions Ides et Calendes, Lausanne 2021, n° 623, ill. col. p. 389

APPLICAT-PRAZAN

Rive gauche

16 rue de Seine - 75006 Paris

APPLICAT-PRAZAN

Rive droite

14 avenue Matignon - 75008 Paris

Lignes groupées: tel +33 (0) 1 43 25 39 24 - fax +33 (0) 1 43 25 39 25 - galerie@applicat-prazan.com - www.applicat-prazan.com

APPLICAT - SAS au capital de 12 000 € - 390 477 255 RCS PARIS - NAF 4779Z - TVA FR 25390477255

Siège social et adresse de correspondance: 16 rue de Seine - 75006 Paris - France



ZAO WOU-KI (1921 - 2013)

Orchidées – 14.12.2006, 2006

Signed on the center of the right border

Oil on canvas

130 x 162 cm

Provenance:

Artist's collection

Private collection, Europe

Exhibitions:

Québec, Musée national des Beaux-Arts du Québec, Zao Wou-Ki, Hommage à Riopelle et peintures récentes, 4 Dec. 2008 - 5 Apr. 2009, ill. col. p. 33

Locarno, Pinacoteca comunale, Zao Wou-Ki (1920-2013), 12 Sept. 2013 - 2 March 2014, ill. col. p. 127

Issoudun, Musée de l'Hospice Saint-Roch, L'Homme des deux rives, Zao Wou-Ki collectionneur, 17 June - 30 Dec. 2016, ill. col. p. 269

Deauville, Les Franciscaines, Zao Wou-Ki, Les allées d'un autre monde, 2024, ill. col. p. 35

Literature:

Dominique de Villepin, Zao Wou-Ki, Œuvres 1935-2008, Flammarion, Paris, 2009, Hong Kong, Kwai Fung Publishing, 2010, Chinese and English editions, Flammarion, Paris, 2012 and 2017, updated and expanded editions, ill. col. p. 336

Françoise Marquet-Zao, Yann Hendgen (dir.), Zao Wou-Ki, Dans l'ultime bonheur de Peindre, 2000-2010, Albin Michel, Paris, 2012, ill. col. p. 121

Roger Lesgards (dir.), Zao Wou-Ki, Couleurs et mots, Le Cherche midi, Paris, 2013, updated and expanded edition, ill. col. p. 99

Françoise Marquet-Zao, Yann Hendgen, Catalogue raisonné des peintures de Zao Wou-Ki, Volume III, 1975-2008, Flammarion, Paris, 2025, coming soon.

For images please mention:

Courtesy Applicat-Prazan, Paris

© Adagp, Paris 2025

APPLICAT-PRAZAN

APPLICAT-PRAZAN:

History

Bernard Prazan, an art-collector of long standing, founded his first gallery in 1989. Since its inception Applicat-Prazan specialises exclusively in top quality paintings by:

Jean-Michel Atlan, Karel Appel, Jean Dubuffet, Maurice Estève, Jean Fautrier, Hans Hartung, Auguste Herbin, Jean Hélion, Asger Jorn, Wifredo Lam, André Lansky, Alberto Magnelli, Alfred Manessier, André Masson, Georges Mathieu, Serge Poliakoff, Jean-Paul Riopelle, Gérard Schneider, Pierre Soulages, Nicolas de Staël, Victor Vasarely, Bram van Velde, Geer van Velde, Maria Elena Vieira da Silva, Wols, or Zao Wou-Ki.

In 2004 Bernard's son, Franck Prazan, took over the management of the gallery. Franck was formerly Managing Director of Christie's and was responsible for its move to Avenue Matignon in Paris, overseeing its development from a simple representative office to a fully-fledged auction house.

Applicat-Prazan's philosophy is as follows:

- **Hyper-specialization** which has led the gallery to concentrate uniquely on European Post-war and on the most significant Artists of this period
- **Hyper-selectivity** – confining the gallery's choice of paintings to those we judge to be the most qualitative
- A policy specifically adapted to the **private collector** who by definition takes a **long term view** of things, smoothing out the effects of speculation.

Certain paintings are particularly worthy of note these last few years. For example:



Nicolas de Staël
La Table de l'Artiste, 1954
89 x 116 cm



Jean-Paul Riopelle
Hommage à Robert le Diable 1953,
200 x 282 cm



Hans Hartung
T 1938-11, 1938
102 x 80 cm



Pierre Soulages
Peinture 195 x 130 cm,
1^{er} sept. 1957



Nicolas de Staël
Agrigente, 1954
60 x 81 cm



Jean Dubuffet
Epoux en visite, 1964
200 x 150 cm

APPLICAT-PRAZAN

Rive gauche

16 rue de Seine – 75006 Paris

APPLICAT-PRAZAN

Rive droite

14 avenue Matignon – 75008 Paris

Lignes groupées: tel +33 (0) 1 43 25 39 24 - fax +33 (0) 1 43 25 39 25 - galerie@applicat-prazan.com - www.applicat-prazan.com

APPLICAT - SAS au capital de 12 000 € - 390 477 255 RCS PARIS - NAF 4779Z - TVA FR 25390477255

Siège social et adresse de correspondance: 16 rue de Seine - 75006 Paris - France

APPLICAT-PRAZAN

The "Schneider, Oeuvres majeures autour d'un tableau d'exception" exhibition, shown at the FIAC in 2006 enjoyed great success. In May 2007 Applicat-Prazan showed at the gallery "Mes Années 50,

Collection Alain Delon". The subtle palette of a great artist, Geer van Velde, was on display in September 2007 at "Presence, silences, hommage à Geer van Velde. In April-May 2008 the Poliakoff exhibition marked a milestone for the artist's career in the international art market, as was the Atlan exhibition organised from October to December 2008 concurrently with an exhibition at the Centre Pompidou of a gift to the nation of works by the same artist. Dialogues I Autour de Pierre Soulages, October to December 2009, marked an important chapter in the life of the gallery. The monographic exhibitions Pincemin and Fautrier in October 2010, followed by Alfred Manessier: Tours, Favellas and other monumental works, in 2012 certainly made a deep impression. Still in 2012, our exhibition of Masson, 1934 – 1944 at Art Basel revealed a fresh interpretation of the talent of this great surrealist, the key to all post-war abstract expressionism. In 2013, our Tribute to Maurice Esteve attracted many collectors at the Salon du Dessin in Paris. In 2013 the Serge Poliakoff exhibition at the FIAC was a resounding success, and the 2014 FIAC saw the opening of our exhibition of 16 major works in Georges Mathieu – Peintures 1948-1959 which met with great interest and approval from the public and the media. At Fiac 2015, the gallery exhibited a selection of 24 paintings by Maurice Estève from 1929 to 1994. In 2016, the gallery showed two series of works by Zoran Music: "We are not the last" and large self-portraits of the 1990's. In 2018, Applicat-Prazan paid a warm tribute to Michel Tapié through our exhibition entitled "Le grand Œil de Michel Tapié".

In 2023 on the occasion of its 30th anniversary Applicat-Prazan presented at the second edition of Paris + by Art Basel a Solo Show dedicated to French artist Jean Hélion, bringing together seven paintings of remarkable importance.

Applicat-Prazan exhibits at **Artgenève, Tefaf Maastricht, Tefaf New York, Art Basel, at Art Basel Paris** and at **FAB Paris (Fine Arts La Biennale)**

In 2017, Applicat-Prazan had the honour of being appointed by MoMA to accompany the Museum in the de-accessioning of 2 paintings.

Applicat-Prazan is located on the Left Bank at 16 Rue de Seine in the very heart of the art gallery district of Saint-Germain-des-Prés. The end of 2010 saw the opening of a second address strategic to the Paris art market on the Right Bank at 14 Avenue Matignon.

Press contact:

Angela Ghezzi
Galerie Applicat-Prazan
Tél.: +33 (0)1 43 25 39 24 / Mob.: +33 (06) 77 83 41 25
angela.ghezzi@applicat-prazan.com
www.applicat-prazan.com



Downloads:

The press release and high definition visuals of the works can be downloaded from the Press section of our internet site: www.applicat-prazan.com

Login: Applicat

Password: Prazan

Follow Franck Prazan on his blog: www.franck-prazan.com

APPLICAT-PRAZAN

Rive gauche

16 rue de Seine – 75006 Paris

APPLICAT-PRAZAN

Rive droite

14 avenue Matignon – 75008 Paris

Lignes groupées: tel +33 (0) 1 43 25 39 24 - fax +33 (0) 1 43 25 39 25 - galerie@applicat-prazan.com - www.applicat-prazan.com

APPLICAT - SAS au capital de 12 000 € - 390 477 255 RCS PARIS - NAF 4779Z - TVA FR 25390477255

Siège social et adresse de correspondance: 16 rue de Seine - 75006 Paris – France