

The background is a dark, textured surface covered with numerous overlapping circles and splatters in shades of red and black. The circles vary in size and opacity, creating a dynamic, abstract pattern. Some circles are solid red, while others are black or have a mottled appearance. Splatters of red and black ink are scattered throughout the composition, adding to the abstract feel.

Art Basel Hong Kong

Booth 1B14

P A C E P R I N T S

For the 2025 edition of Art Basel Hong Kong, Pace Prints is pleased to present a selection of newly released editions and monoprints by Nigel Cooke, Michael Kagan, Scott Kahn, and Hilary Pecis, as well as new unique paper works by Adam Pendleton, Shahzia Sikander, and Kennedy Yanko.

The booth will also feature significant editions and monoprints by Nina Chanel Abney, Ross Caliendo, Nick Doyle, Leonardo Drew, Austin Eddy, Derek Fordjour, Helen Frankenthaler, Sam Gilliam, Chase Hall, Keith Haring, Shara Hughes, Friedrich Kunath, Jake Longstreth, Yoshitomo Nara, Louise Nevelson, Hilary Pecis, David Salle, Blair Saxon-Hill, Andrew Schoultz, Shahzia Sikander, Robin F. Williams, and Jonas Wood.

Showcasing a range of innovative techniques, new releases include Adam Pendleton's airbrushed pigment with screenprint on paper works, *Untitled (blue)*, *Untitled (purple)*, and *Untitled (red)*, Shahzia Sikander's large-scale stenciled pulp painting, *The ERA Book – Liquid & Light*, and Kennedy Yanko's pigmented paper work, *On the Spot*. New abstract monoprints by Nigel Cooke and a collage on panel by Michael Kagan from his Formula One series will also be on view.

New editions by Hilary Pecis and Scott Kahn will make their debut at the fair, including Pecis' most recent stenciled paper pulp still-life, *Tangerines and Lilies*, and Kahn's third edition with Pace Prints, *Twilight*.

Other highlights include a selection of Ukiyo-e woodcuts by Yoshitomo Nara, the rare large-scale print *Retrospect* by Keith Haring, silkscreen editions by Sam Gilliam, and *Five Bonsais*, a set of five Ukiyo-e prints by Jonas Wood.

Please contact us at **info@paceprints.com** to inquire or request any additional information.

P A C E P R I N T S

X



SPACE PRINCE

Nina Chanel Abney

b. 1982, Chicago, IL

Nina Chanel Abney's works on paper give voice to the artist's social consciousness on a bold, "unapologetic" scale. Unified through her signature visual language of symbols and stylized figures, her prints and collages draw both subject and message from current events and society.

Abney currently lives and works in New York. The artist currently has a solo exhibition at Jeffrey Deitch in Los Angeles. Her work is included in collections globally, including the Museum of Modern Art, New York, the Brooklyn Museum, The Rubell Family Collection, Bronx Museum, and the Burger Collection, Hong Kong, among others.



Magic (2024)

Relief print
59½ x 39¼ inches
Edition of 30

\$15,000 USD UNFRAMED

P A C E P R I N T S



SPACE PRINTS

Ross Caliendo

b. 1988, Pittsburgh, PA

Ross Caliendo is best known for his explorations of color and texture through landscape. These unique works are the first of his collaboration with Pace Editions.

He has been the subject of numerous solo exhibitions: CVG Foundation, Beijing; Ross+Kramer, East Hampton and New York; Grifter, New York; No Place Gallery, Columbus; among others.

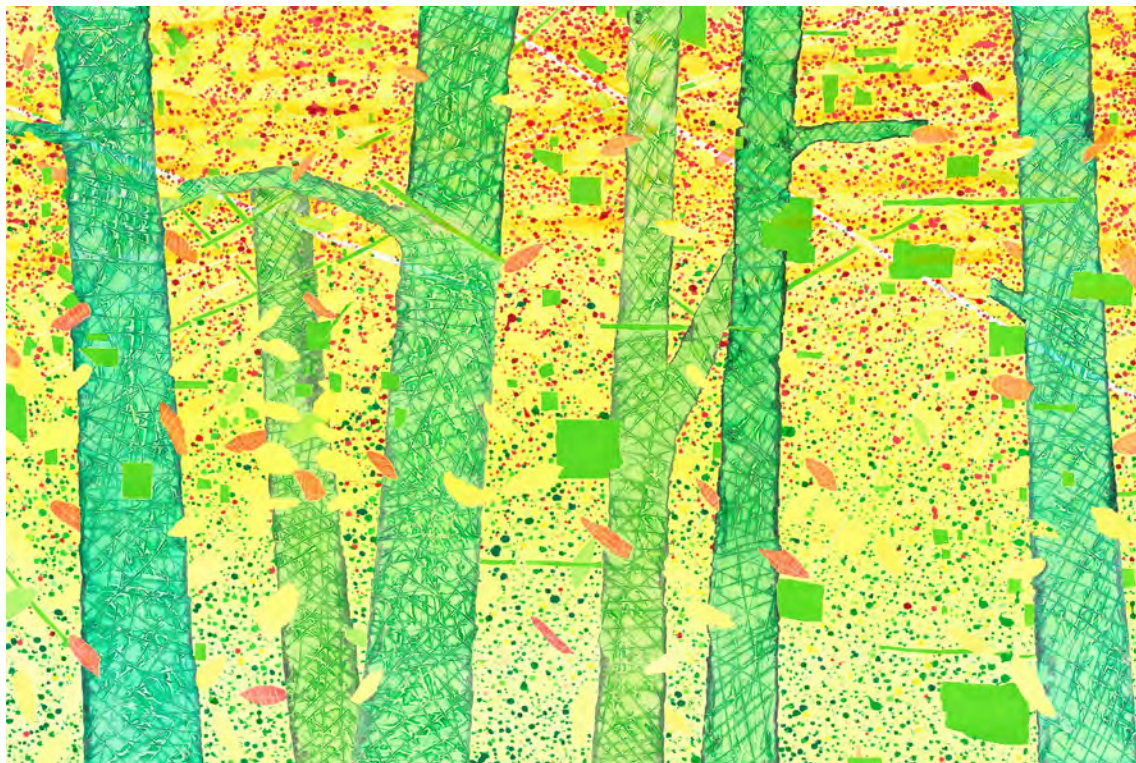


Untitled (2024)

Monoprint
39¼ x 59¼ inches

\$15,000 USD FRAMED

P A C E P R I N T S



Untitled (2024)

Monoprint

39 1/4 x 59 1/4 inches

\$15,000 USD FRAMED

P A C E P R I N T S



P A C E P R I N T S

Nigel Cooke

b. 1973, Manchester, England

Nigel Cooke is known for his evocative paintings which blend personal memories with art historical influences, classical themes with abstract interpretations of the natural world.

Executed with a masterful array of techniques and applications of paint, Nigel Cooke's atmospheric compositions weave figures and environments together, reflecting a complex interplay of memory, chance, and intuition. The figures that appear in them are not portraits of individuals but hybrids of many—combinations of found photographs, observation, and invention.

Nigel Cooke's artworks are held in several of the world's major museum collections around the world, including the Museum of Modern Art, New York; Tate Gallery, London and Astrup Fearnely Museet for Moderne Kunst, Oslo.



Japanese Wave (2024)

Monotype
26 x 50½ inches

\$18,000 USD FRAMED

P A C E P R I N T S



Star of Rufus (2024)

Monotype
30% x 60½ inches

\$20,000 USD FRAMED

P A C E P R I N T S



FACE PRINTS

George Condo

b. 1957, Concord, NH

Arriving in New York in the 1980s, George Condo became involved with members of Andy Warhol's Factory and collaborated with prominent figures of the Beat Generation. In Condo's work, which in his words "reflect the madness of everyday life," meticulous attention to naturalistic detail is coupled with elements of the grotesque and the absurd. His recent paintings and prints contain elements of a figurative, cartoon, Surrealist, and Pop heritage combined with an equal interest in painterly abstraction. His line etchings and drawings display his virtuosity as a draftsman.

The artist currently has a solo exhibition at Hauser and Wirth in New York City. His work is in the permanent collections of The Museum of Modern Art, New York, The Whitney Museum of American Art, The Solomon R. Guggenheim Museum, New York and the Albright-Knox Museum in Buffalo, New York.



Untitled (1989)

Etching
18¼ x 14¾ inches
Edition of 55

\$10,000 USD UNFRAMED

P A C E P R I N T S



Untitled (1989)

Etching
18¼ x 14¾ inches
Edition of 55

\$10,000 USD UNFRAMED

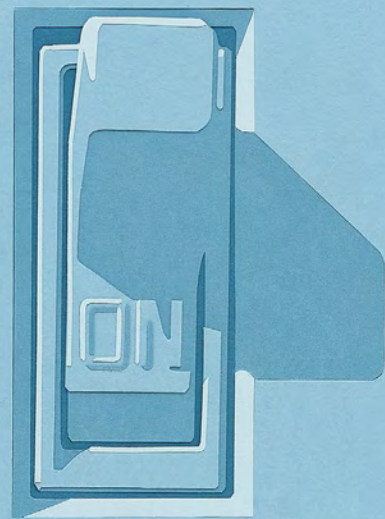
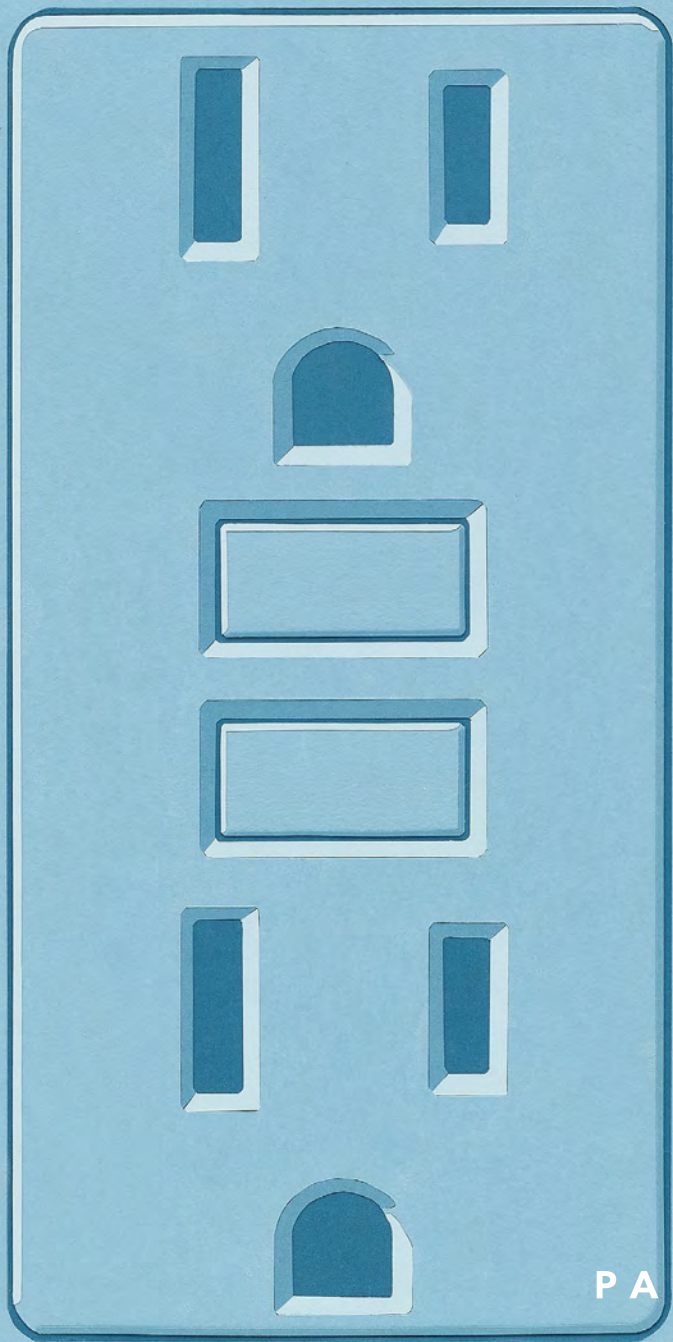


Untitled (Portrait) (1989)

Etching
27 x 19 inches
Edition of 55

\$12,000 USD UNFRAMED

P A C E P R I N T S



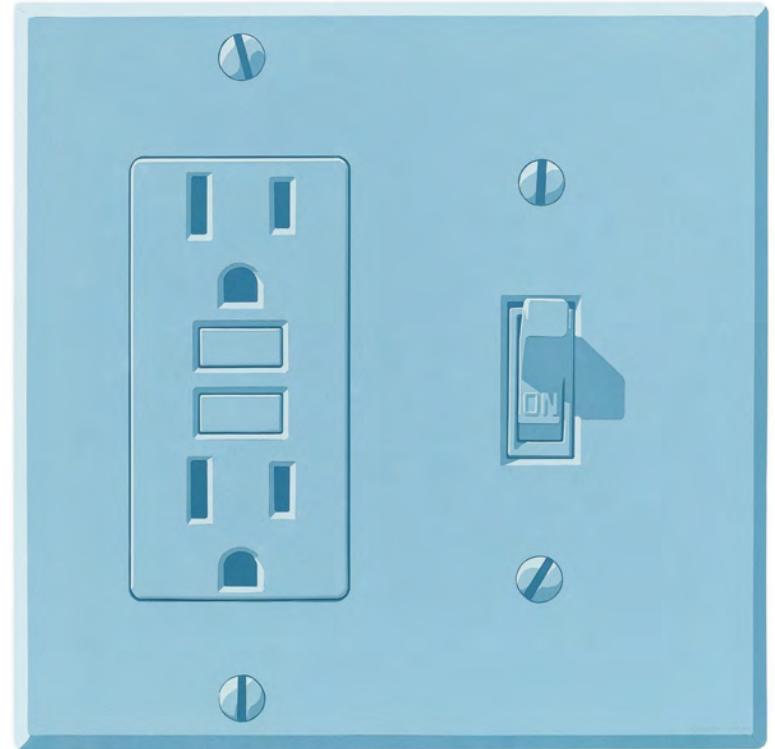
P A C E P R I N T S

Nick Doyle

b. 1983, Los Angeles, CA

Known best for sculptural wall works made from collaged denim, Nick Doyle extends his mastery of trompe l'oeil through paper in his work with Pace Editions, including *bathing in your cold light*. By manipulating and recreating the mundane, the artist both reflects on and critiques social and political agendas that are often at play in contemporary life and visual culture.

Nick Doyle currently has a solo exhibition at Perrotin in Paris. His work has shown in solo gallery exhibitions worldwide, and in 2023 was the subject of the solo museum exhibition *Old Roads and Broken Records*, curated by Joey Yates at KMAC Contemporary Art Museum, Louisville, KY.

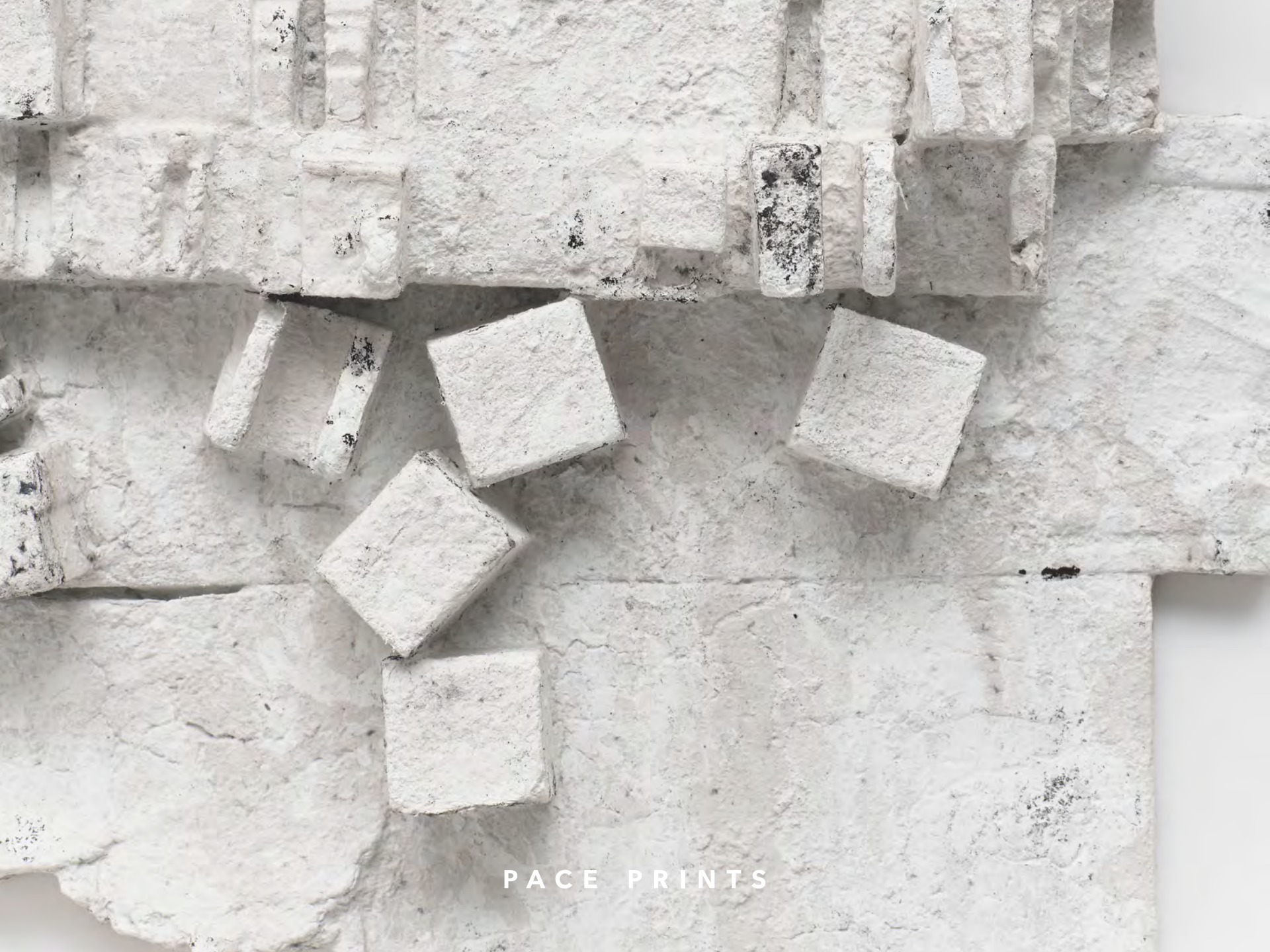


bathing in your cold light (2022)

Collage with pigmented handmade cotton paper
35¾ x 36¾ inches
Edition of 35

\$7,500 USD UNFRAMED

P A C E P R I N T S



PACE PRINTS

Leonardo Drew

b. 1961, Tallahassee, FL

The work of Leonardo Drew teeters between order and chaos. Primarily a sculptor working with reclaimed materials such as wood, stone, and tar, Drew has pushed the boundaries of paper in his ongoing collaboration with Pace Paper. He transforms paper pulp to look stony and eroded, creating reliefs to explore themes of decay and entropy.

Recent solo exhibitions were held at Galerie Lelong & Co, New York (2024); Pendleton Center for the Arts, Pendleton, OR (2023); Amon Carter Museum of American Art, Fort Worth, TX (2023); Yorkshire Sculpture Park, West Bretton, UK (2023); and many more. His works have been widely exhibited and are included in the collections of the Metropolitan Museum of Art, The Guggenheim, The Museum of Contemporary Art in Los Angeles, The Hirshhorn Museum and Sculpture Garden, and Tate Modern, among many others.



85P (2021)

Pigmented and cast handmade paper

23 x 15¼ x 3⅝ inches

Edition of 20

\$12,000 USD FRAMED

P A C E P R I N T S



PAGE PRINTS

Austin Eddy

b. 1986, Boston, MA

Austin Eddy, a Brooklyn-based artist, makes birds the subject of his brilliant, abstract compositions. His works are each a unique culmination of various papermaking techniques developed at Pace Paper and mirror the intersecting planes of color and light of his vision.

Eddy has been the subject of solo exhibitions internationally at Livie Fine Art, Zurich (2023, 2021), Galerie Eva Presenhuber, Greece (2022), Knust Kunz, Munich (2022), Le Consortium, Berggruen Gallery, San Francisco (2023), Galerie Eva Presenhuber, New York, (2022), among others.



For Lovers. (2023)

Pulp painting on handmade paper
33½ x 21½ inches

\$7,000 USD FRAMED



P A C E P R I N T S

Sam Gilliam

b. 1933, Tupelo, Mississippi
d. 2022, Washington, D.C.

Sam Gilliam was one of the great innovators in postwar American painting. He emerged from the Washington, D.C. scene in the mid 1960s with works that elaborated upon and disrupted the ethos of Color School painting. His silkscreens layer, crease, and dance with color, recalling the dynamism of his drape paintings.

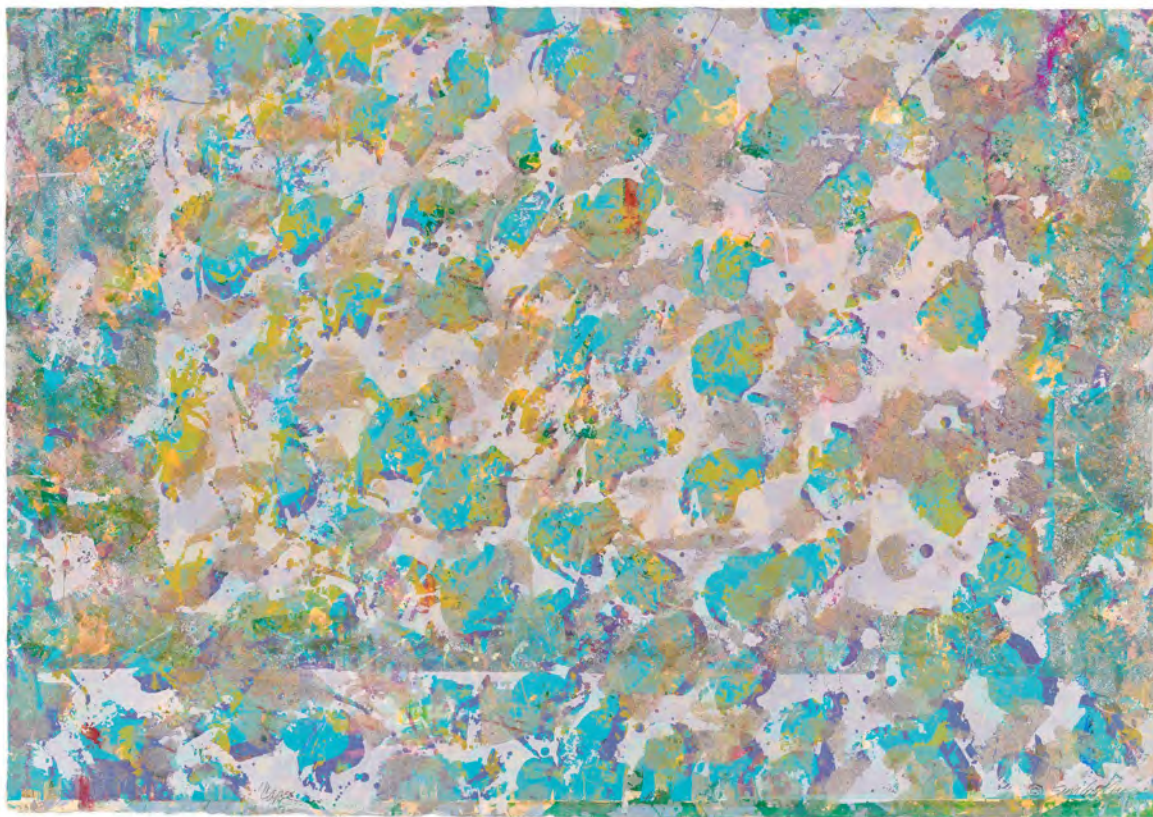
In addition to a traveling retrospective organized by the Corcoran Gallery of Art, Washington, D.C. in 2005, Sam Gilliam was the subject of solo exhibitions at the Museum of Modern Art, New York (1971); The Studio Museum in Harlem, New York (1982); and the Whitney Museum of American Art, among others.



Untitled (1973)

Silkscreen on handmade paper
21 x 20 ¼ inches

\$10,000 USD UNFRAMED



Cape (1994)

Silkscreen
20½ x 29¼ inches

\$12,000 USD UNFRAMED

P A C E P R I N T S



Untitled (1973)

Silkscreen
20¼ x 29¼ inches

\$12,000 USD UNFRAMED

P A C E P R I N T S



PACE PRINTS

Helen Frankenthaler

b. 1928, New York, NY

d. 2011, Darien, CT

Helen Frankenthaler was a pioneer in Abstract Expressionism, with a prolific practice spanning decades. Early in her career she developed the stain painting technique, which became a catalyst for a generation of color field painters. Although Frankenthaler's work is abstract, a strong suggestion of landscape is often apparent. In *Snow Pines*, her iconic light washes and gestural marks are miraculously translated into traditional Japanese woodblock prints.

Recent solo presentations of the artist's work were held at Gagosian, London (2021); Ross Gallery at the University of Pennsylvania (2020); The Tate Modern, London (2019); Princeton University Art Museum (2019); Museo di Palazzo Grimani, Venice, Italy (2019); and many others.



Snow Pines (2004)

Ukiyo-e woodcut

37½ x 26 inches

Edition of 65

\$125,000 USD UNFRAMED

P A C E P R I N T S



PACE PRINTS

Chase Hall

b. 1993, Saint Paul, MN

Chase Hall's paintings respond to a variety of social and visual systems, each of which intersects with complex trajectories of race, hybridity, economics, and personal agency. Over the course of his multiyear collaboration with Pace Editions, Hall developed a method of printmaking using coffee that allows for a remarkable range of color and tone.

Hall has been the subject of numerous solo exhibitions, including at David Kordansky Gallery in Los Angeles, Halficans (2024); Pace Prints ADAA 2024 booth exhibition of monoprints by Hall (2024); SCAD Museum of Art, Savannah, Georgia (2023); and Melanoidin at Pace Prints (2023), along with several others. His work is in the permanent collections of the Metropolitan Museum of Art, the Dallas Museum of Art, the Walker Art Center, the Los Angeles County Museum of Art, the Whitney Museum of American Art, and others.



Dont Fire Til You See The Whites of Their Eyes (2024)

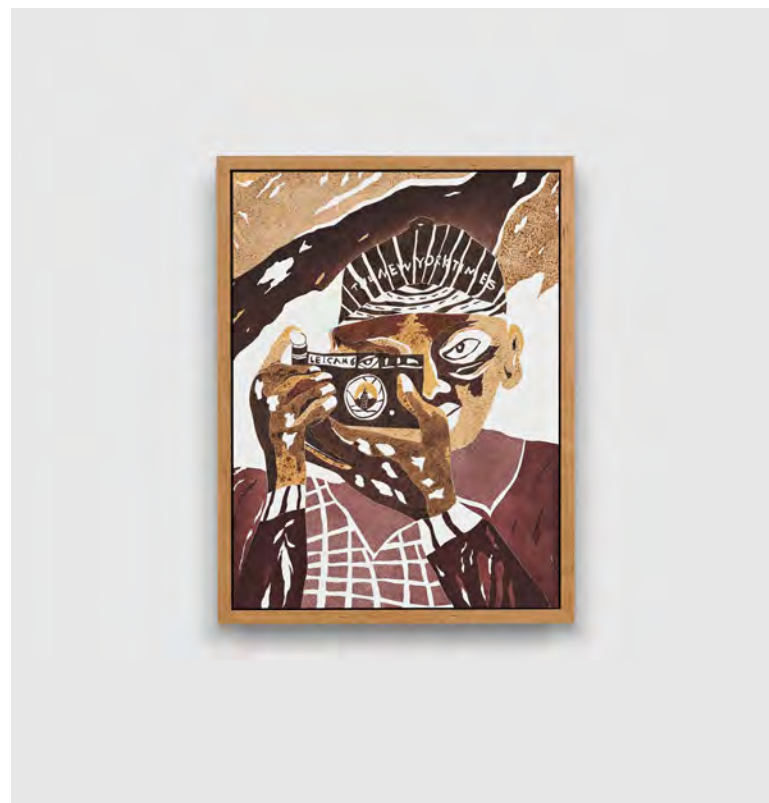
Jigsaw relief with coffee grounds and ink on cotton paper

57½ x 46½ inches

Unique

\$50,000 USD FRAMED

P A C E P R I N T S



Portrait of The City (2023)

Jigsaw relief with coffee grounds and ink on cotton paper

23¼ x 17½ inches

Edition of 20

\$6,000 USD FRAMED

P A C E P R I N T S



P A C E P R I N T S

Shara Hughes

b. 1981, Atlanta, GA

Shara Hughes uses dizzying brushwork, vibrant colors, and shifting perspectives to make paintings that defy many of the existing conventions associated with the landscape genre. Natural motifs and patterned elements recur throughout Hughes's pictures; she transposes the psychological complexity of her interior world into lush and layered compositions.

Hughes was the subject of solo exhibitions at FLAG Art Foundation; Kunstmuseum Luzern, Switzerland; Yuz Museum, Shanghai; Contemporary Art Museum St. Louis; Garden Museum, London; among others. Her work is in the permanent collections of institutions including The Metropolitan Museum of Art, Denver Art Museum, and Smithsonian American Art Museum.



Tension Setting In (2020)

Watercolor monotype
36¾ x 27¼ inches

\$40,000 USD FRAMED

P A C E P R I N T S

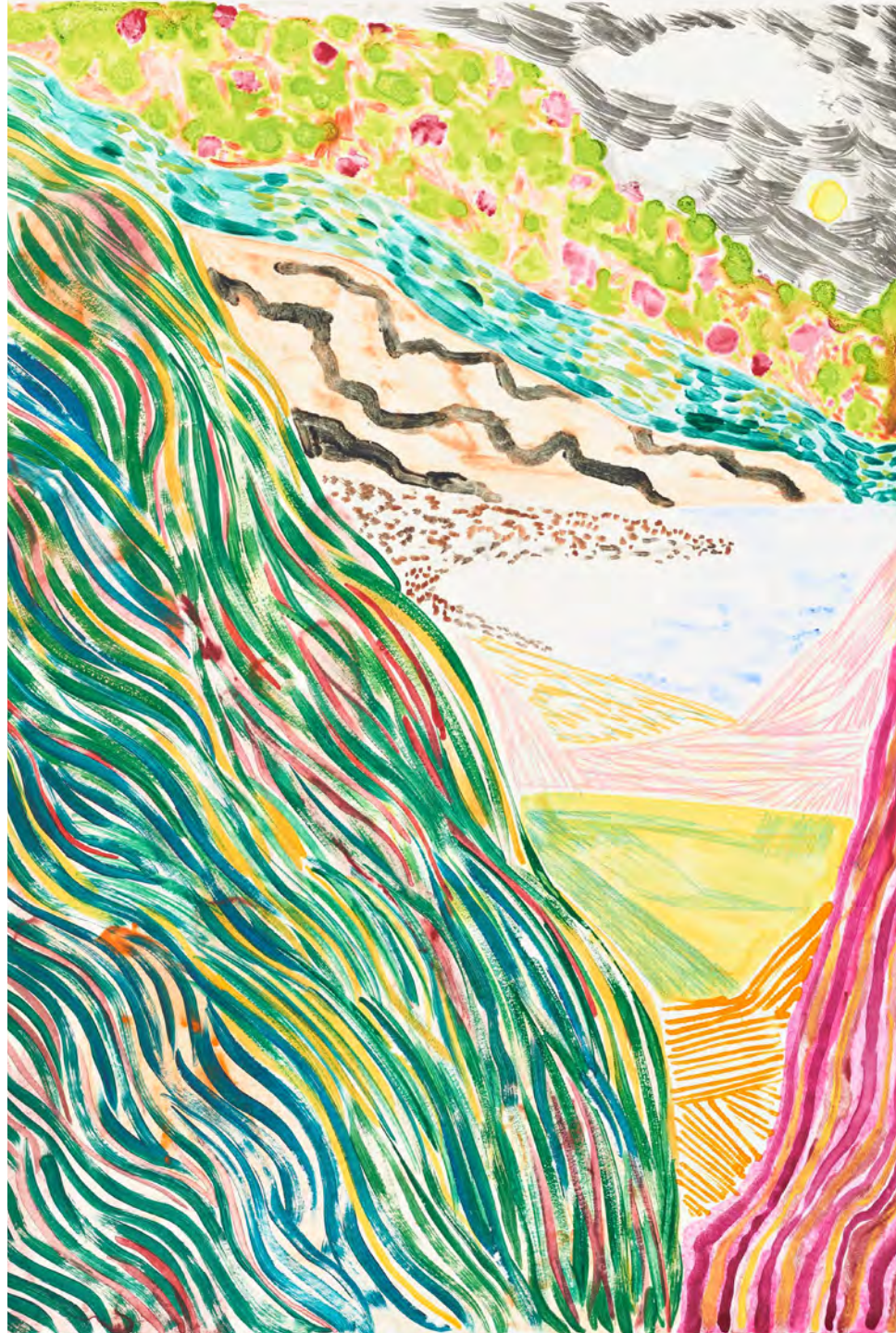


Tension Setting In 2 (2020)

Watercolor monotype
36¾ x 27¼ inches

\$40,000 USD FRAMED

P A C E P R I N T S





Keith Haring

b. 1958, Reading, PA

d. 1990, New York, NY

Keith Haring was an artist and activist, whose oeuvre has become emblematic of the New York art scene in the 1980s. Pace Prints is proud to collaborate with the Keith Haring Foundation to present his work.

A selection of works by Haring are available, including his colorful *Retrospect* (1989), which surveys the artist's most iconic motifs; the *Icons* (1990) which feature characters like the radiant baby, flying devil, and barking dog; and a terracotta vessel that brings his signature linework into the three dimensional.

Untitled (1989) is unmistakable in its capturing of Haring's graphic and ubiquitous style, which lends so naturally to print. It features a figure whose torso serially inhabits itself, reminiscent of nesting dolls. This print was included in the 1989 *Kinderstern Portfolio*, alongside works by Sol Lewitt, Sigmar Polke, and a number of other artists.



Retrospect (1989)

Silkscreen

46 x 82 inches

Edition of 75

\$300,000 USD FRAMED

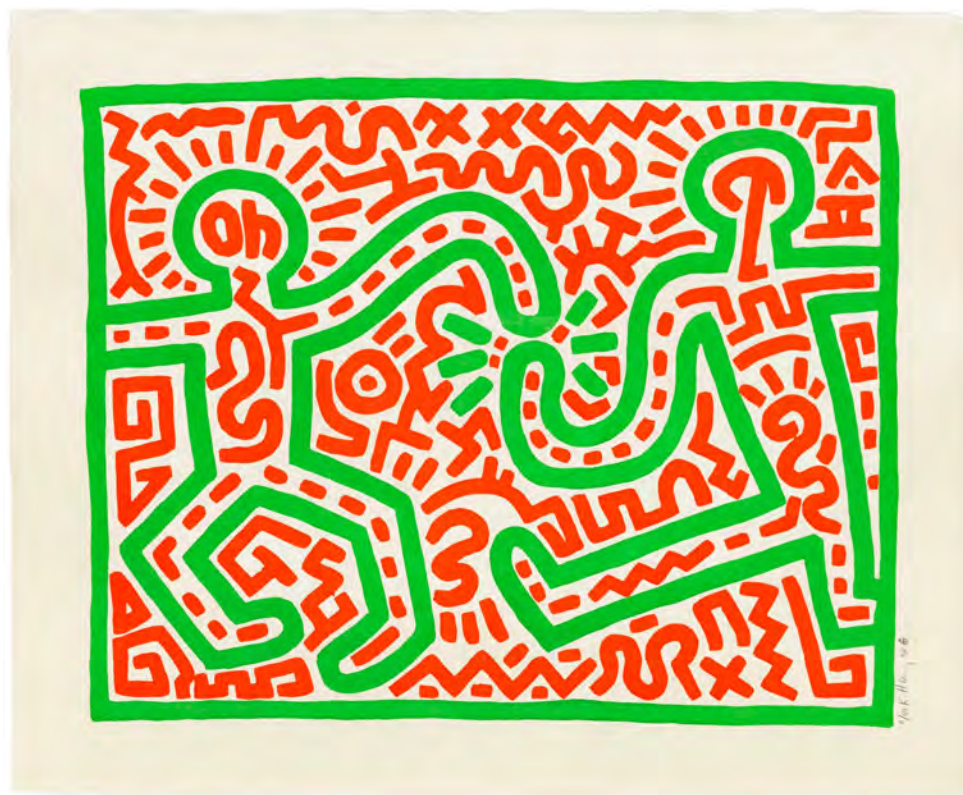


Untitled (1989)

Silkscreen
30 x 20¾ inches
Edition of 100

\$65,000 USD FRAMED

P A C E P R I N T S



Untitled (1983)

Woodcut
24 x 30 inches
Edition of 60

\$50,000 USD FRAMED

P A C E P R I N T S



Untitled (1990)

Ink on terracotta vessel
8 3/4 x 28 3/4 x 28 3/4 inches

\$45,000 USD

P A C E P R I N T S



Icons (1990)

One from a set of five silkscreens with embossing
21 x 25 inches
Edition of 250

\$35,000 USD UNFRAMED



Icons (1990)

One from a set of five silkscreens with embossing
21 x 25 inches
Edition of 250

\$35,000 USD UNFRAMED

P A C E P R I N T S



Icons (1990)

One from a set of five silkscreens with embossing
21 x 25 inches
Edition of 250

\$35,000 USD UNFRAMED



Icons (1990)

One from a set of five silkscreens with embossing
21 x 25 inches
Edition of 250

\$35,000 USD UNFRAMED

P A C E P R I N T S



Icons (1990)

One from a set of five silkscreens with embossing

21 x 25 inches

Edition of 250

\$35,000 USD UNFRAMED

P A C E P R I N T S



PACE PRINTS

Michael Kagan

b. 1980, Virginia Beach, VA

Michael Kagan, a Brooklyn-based painter, uses large expressive brushstrokes to depict racecar drivers, astronauts, and others who embody intensity, stamina, and exploration. In his newest monoprints, collage and monotyping build surfaces full of action and velocity.

The artist currently has a solo exhibition at Pace Prints on display through April 26, 2025.

His work is held in many public collections, including Maki Collection in Tokyo, Japan; Hall Collection in Reading, VT, USA; Gemini Trust Company in New York, NY, USA; among others. Special projects include two apparel collaborations with Pharrell Williams, and an award-winning album cover for White Lies.



Iceman (day) (2024)

Collage on panel
38 x 50 inches

\$35,000 USD FRAMED

P A C E P R I N T S



Team (day) (2025)

Collage on panel
38 x 50 inches

\$35,000 USD FRAMED

P A C E P R I N T S



P A C E P R I N T S

Derek Fordjour

b. 1974, Memphis, TN

Derek Fordjour's multilayered composition is rich in its materiality, as the artist layers on glitter and gold leaf before finishing each impression by hand. It is reflective of his tendency to depict performers and athletes, and positioning them in rife moments of communal and cultural ritual.

Recent solo exhibitions were held at Montana Museum of Art and Culture (2024); Petzel Gallery, New York (2023); The Museum of Contemporary Art, Los Angeles (2022); Contemporary Art Museum of St. Louis (2020); and many others. His work is also held in the private and public collections of The Studio Museum of Harlem, Guggenheim Museum, Metropolitan Museum of Art, SFMOMA, Brooklyn Museum, Perez Museum, The Whitney Museum and LACMA.



Mercantile on the Nile (2024)

Hand made paper with gold leaf, chalk pastel and glitter
36½ x 25 inches
Edition of 25

\$18,000 USD UNFRAMED

P A C E P R I N T S



P A C E P R I N T S

Scott Kahn

b. 1946, Springfield, MA

Scott Kahn is a New York based painter best known for his dreamlike landscapes. He has been the subject of numerous exhibitions in New York and abroad, at David Zwirner, the Long Museum, Shanghai, the ICA Miami, Florida, and the University of Pennsylvania, Philadelphia. He additionally received two grants from the Pollock Krasner Foundation and a residency at the Edward Albee Foundation in Montauk.

Twilight is the third edition he has published with Pace Prints, capturing an eering and uncanny light with great dimension through traditional relief and etching techniques.



Twilight (2025)

Etching and relief print with pochoir

33¾ x 33¾ inches

Edition of 35

\$10,000 USD UNFRAMED

P A C E P R I N T S



Fireflies (2024)

Etching relief and gold leaf
 29½ x 25¼ inches
 Edition of 35

\$7,500 USD UNFRAMED

P A C E P R I N T S



I COULDN'T SLEEP EITHER.

PACE PRINTS

Friedrich Kunath

b. 1974, Chemnitz, Germany

Friedrich Kunath creates exuberant landscapes, layering brilliant skies with a floating line of heartfelt text, appropriated from references like postcards or perfume scents. *I Couldn't Sleep Either* is the artist's only edition published with Pace Prints, combining handmade paper with collaged etching to produce its bittersweet effect.

His work has been the subject of numerous solo exhibitions globally, including shows at Galerie Max Hetzler, Berlin (2024); Nassima Landau Art Foundation, Tel Aviv (2024); G2 Kunsthalle, Leipzig (2024); Tim Van Laere Gallery, Antwerp (2024); and many others.



I Couldn't Sleep Either (2022)

Handmade paper with collaged etching and hand finishing
35½ x 29½ inches
Edition of 25

\$7,500 USD UNFRAMED

P A C E P R I N T S



PAGE PRINTS

Jake Longstreth

b. 1977, Sharon, CT

Jake Longstreth is a Los Angeles-based artist largely inspired by the landscapes surrounding him, inclusive of their commercial elements. His work embraces manmade intrusions in the midst of Southern California's cerulean skies and abundant flora. They often depict nostalgic and foregone brands, mundane shopping center parking lots, and environmental hazards, imbuing the otherwise picturesque scenes with frank irony.

Longstreth has been the subject of numerous solo exhibitions at Galerie Max Hetzler, Nino Mier Gallery in Brussels and Los Angeles, the Crisp Ellert Museum, Monte Vista Projects, along with group exhibitions at Almine Rech, David Kordansky Gallery, Blum & Poe, and many more.



Scottsdale (2024)

Etching and relief print with hand finishing

17¼ x 23 inches

Edition of 35

\$3,000 USD UNFRAMED

P A C E P R I N T S



Sierra Nevada Foothills (2024)

Etching and relief print

17 x 17 inches

Edition of 35

\$2,500 USD UNFRAMED

P A C E P R I N T S



P A C E P R I N T S

Yoshitomo Nara

b. 1959, Hirosaki, Aomori Prefecture Japan

Yoshitomo Nara's images reference a world inhabited by children and animals, often brandishing weapons, frequently irritated and angry, but also vulnerable and sad. Nara works with master printer, Yasu Shibata, to sensitively capture his figures using ukiyo-e woodcut.

Nara's work is included in the collections of Aomori Prefectural Museum of Art and the Japan Foundation in Japan, Museum of Contemporary Art in Los Angeles, Museum of Modern Art, New York, NY, San Francisco Museum of Modern Art, among others.



Untitled (Eye Patch) (2012)

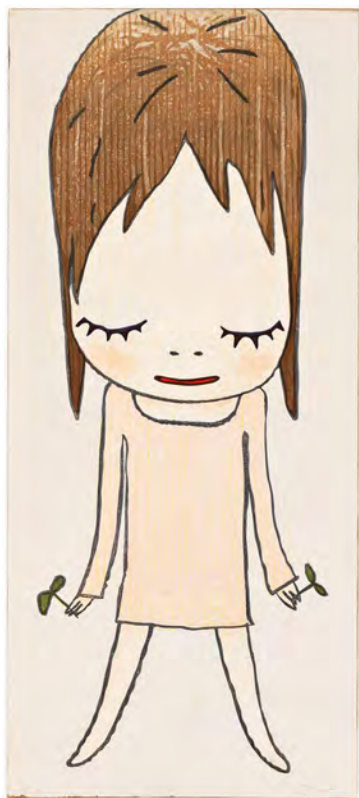
Ukiyo-e woodcut with collage

27 x 19 inches

Edition of 50

\$150,000 USD FRAMED

P A C E P R I N T S



Sprouts in Hands (2013)

Ukiyo-e woodcut
30 x 13½ inches
Edition of 25

\$125,000 USD FRAMED



Balance Girl (2014)

Ukiyo-e woodcut
30 x 20¾ inches
Edition of 25

\$175,000 USD FRAMED



Knife (2022)

Ukiyo-e woodcut mounted on archival cardboard
12½ x 12½ inches
Edition of 25

\$65,000 USD FRAMED



This Machine Kills Fascists! (2022)

Ukiyo-e woodcut mounted on archival cardboard
12½ x 12½ inches
Edition of 25

\$65,000 USD FRAMED



Three Stars (2022)

Ukiyo-e woodcut mounted on archival cardboard
12½ x 12½ inches
Edition of 25

\$65,000 USD FRAMED

P A C E P R I N T S



P A C E P R I N T S

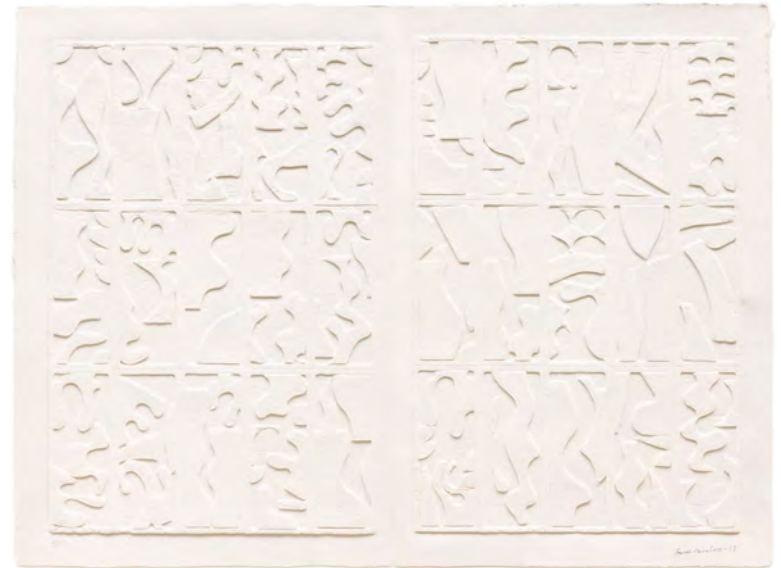
Louise Nevelson

b. 1899, Ukraine

d. 1988, New York, NY

Louise Nevelson, a pioneer of modern sculpture throughout the twentieth century, produced a number of relief prints with Pace Editions. Often utilizing cast paper, Nevelson expanded the boundaries of both her practice and Pace Paper by creating three dimensional reliefs that harken back to her monochromatic, wooden sculptures.

Recent presentations of her work include solo exhibitions at the Whitney Museum of American Art (2025); Pace Gallery, New York (2025); Amon Carter Museum of American Art, Fort Worth, TX (2023-2024); Pace Gallery, Los Angeles (2023); the 59th Biennale di Venezia (2022); Locks Gallery, Philadelphia, PA (2022); and countless others.



Morning Haze (1978)

White cast paper relief diptych

33 x 46 inches

Edition of 125

\$30,000 USD UNFRAMED

P A C E P R I N T S



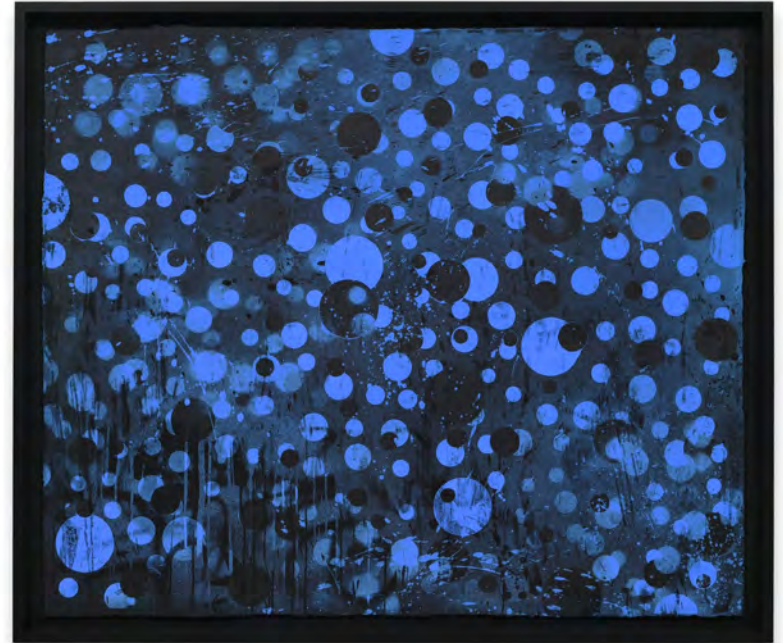
P A C E P R I N T S

Adam Pendleton

b. 1984, Richmond, VA

Adam Pendleton is a conceptual artist known for his multi-disciplinary practice, which moves fluidly between painting, publishing, photographic collage, video and performance. His work centers on an engagement with language, in both the figurative and literal senses, and the re-contextualization of history through appropriated imagery to establish alternative interpretations of the present and, as the artist has explained, “a future dynamic where new historical narratives and meanings can exist.”

The artist currently has a museum exhibition *Adam Pendleton: Love, Queen*, which is on display through April 4, 2025–Jan 3, 2027 at the Hirshhorn Museum in Washington, DC. Pendleton’s work is held in numerous public collections including the Los Angeles County Museum of Art; Carnegie Museum of Art, Pittsburgh, Pennsylvania; The Museum of Modern Art, New York and Tate, London.



Untitled (blue) (2025)

Airbrushed pigment on pigmented cotton with screenprint
40 x 48 inches

\$25,000 USD UNFRAMED

P A C E P R I N T S

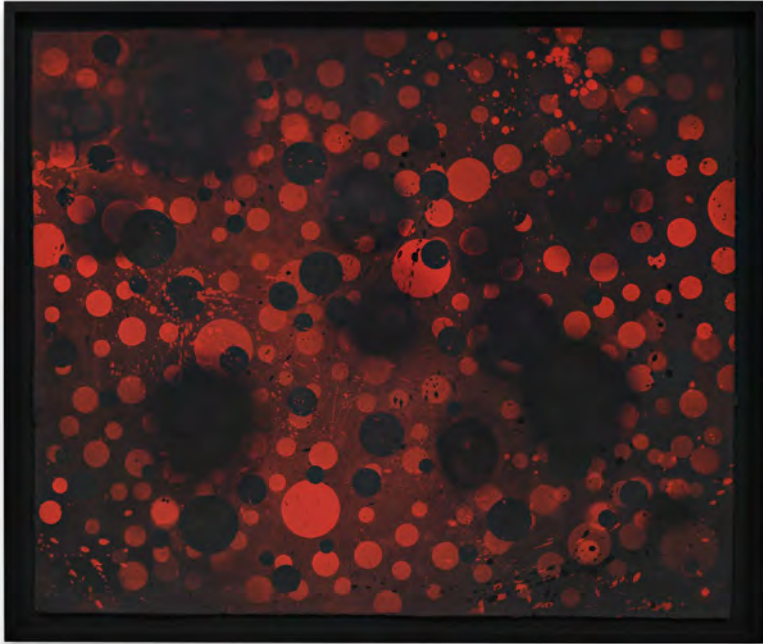


Untitled (purple) (2025)

Airbushed pigment on pigmented cotton with screenprint
40 x 48 inches

\$25,000 USD UNFRAMED

P A C E P R I N T S

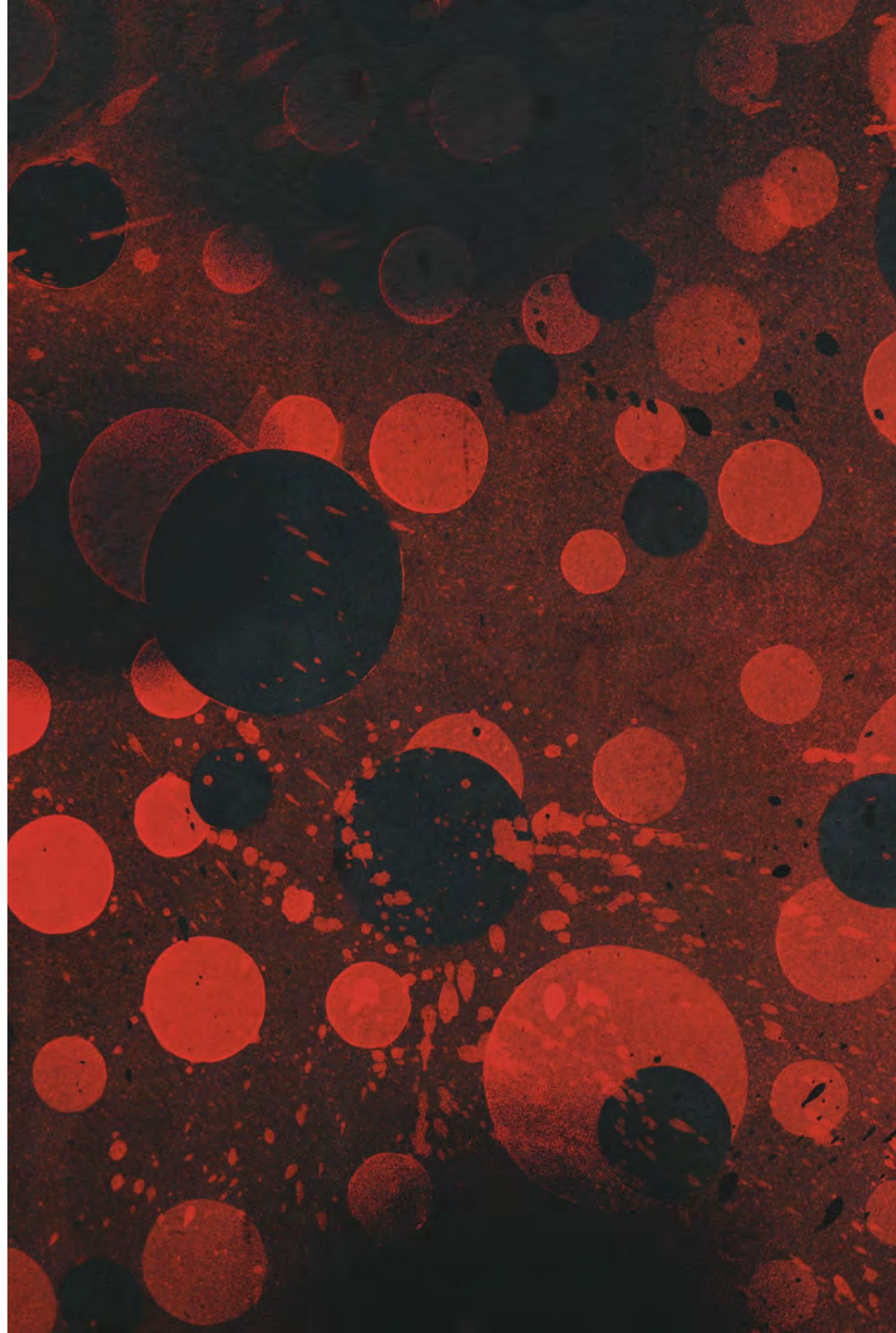


Untitled (red) (2025)

Airbrushed pigment on pigmented cotton with screenprint
40 x 48 inches

\$25,000 USD UNFRAMED

P A C E P R I N T S





PACE PRINTS

Hilary Pecis

b. 1979, Fullerton, CA

Hilary Pecis's saturated colors and interlocking planes bode well for her exploration in papermaking. Using pigmented paper pulp, Pecis stencils each detail of her work, embedding them into the fabric of the handmade paper.

Hilary Pecis has been the subject of solo exhibitions at David Kordansky Gallery, New York City and Los Angeles; Rockefeller Center, New York; Timothy Taylor, London; Spurs Gallery, Beijing; Rachel Uffner Gallery, New York; and Crisp-Ellert Art Museum, Flagler College, St. Augustine, Florida. Her work is in the permanent collections of the National Gallery of Art, Washington, D.C.; Columbus Museum of Art, Ohio; Aïshti Foundation, Beirut; and Yuz Museum, Shanghai.



Tangerines and Lilies (2024)

Pigmented and stenciled handmade paper

27¾ x 21 inches

Edition of 35

\$5,000 USD FRAMED

P A C E P R I N T S



Sunset (2024)

Pigmented and stenciled handmade paper

40 1/2 x 30 inches

Edition of 35

\$9,000 USD UNFRAMED

P A C E P R I N T S





Central Coast (2023)

Pigmented and stenciled handmade paper
40 1/8 x 30 3/8 inches
Edition of 35

\$9,000 USD UNFRAMED

P A C E P R I N T S



Fishbowl (2023)

Pigmented and stenciled handmade paper

40¼ x 30¼ inches

Edition of 35

\$12,000 USD UNFRAMED

P A C E P R I N T S





PAGE PRINTS

David Salle

b. 1952, Norman, OK

David Salle is a contemporary American painter, printmaker, and photographer. He is known for his collage-like paintings layering figures and patterns into colorful compositions. His unique prints combine references from pop culture and art history, while also exploring techniques such as monotype, jigsaw relief, and papermaking.

Recent solo exhibitions of his artworks have been up at Gladstone Gallery and Pace Prints in New York City. Salle has also been the subject of solo presentations at the Whitney Museum, New York; Museum of Contemporary Art, Los Angeles; Museum of Contemporary Art, Chicago; Stedelijk Museum, Amsterdam; and many others. He has also participated in major international expositions including Documenta 7 (1982), Venice Biennale (1982 and 1993), Whitney Biennial (1983, 1985, and 1991), Paris Biennale (1985), and Carnegie International (1985).

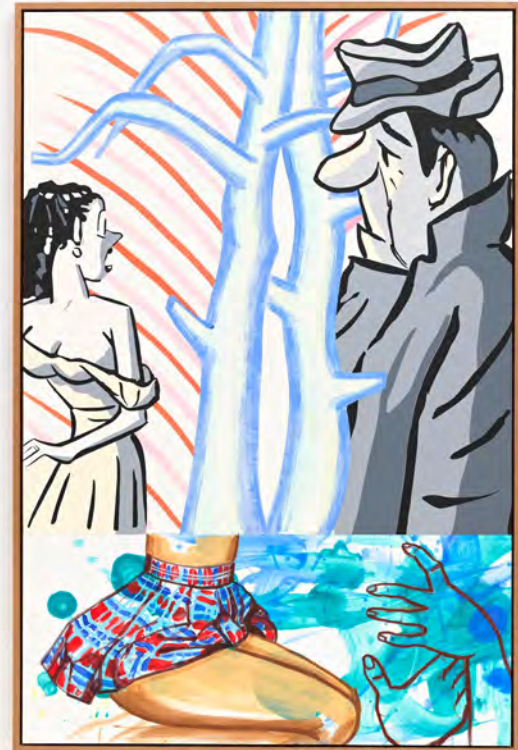
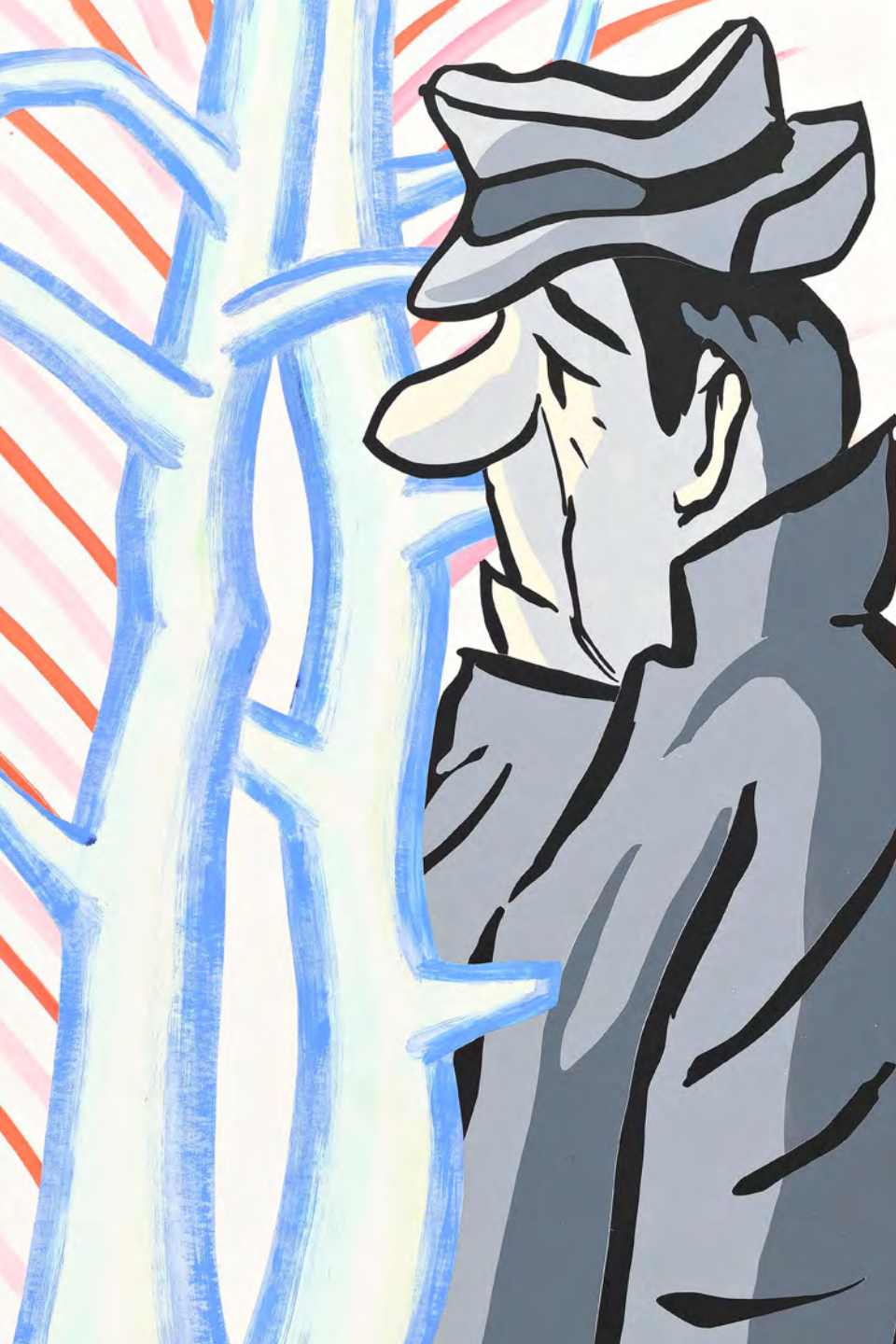


Untitled (2024)

Collage on panel with hand finishing
66 x 44 inches

\$65,000 USD FRAMED

P A C E P R I N T S

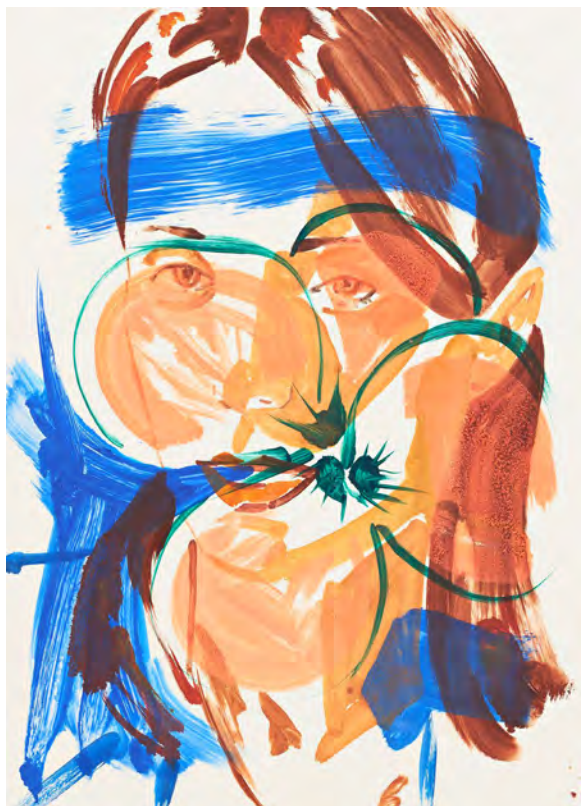


Untitled (2024)

Collage on panel with hand finishing
66 x 44 inches

\$65,000 USD FRAMED

P A C E P R I N T S



Untitled (2019)

Monotype
31 x 22½ inches

\$18,000 USD FRAMED

P A C E P R I N T S





PACE PRINTS

Andrew Schoultz

b. 1975, Milwaukee, WI

Andrew Schoultz, first a professional skateboarder, moved to San Francisco in 1998 and began his painting career with outdoor murals. He is known for his use of motifs such as the US dollar bill, antique etchings, and archaic war vessels. In his collaboration with Pace Editions, Schoultz's intricate line work translates cleanly to etching, while hand collaged details like the tree leaves featured in *All Seeing Owl (pink)* lend a vivid flare.

Schoultz received his BFA in Illustration from the Academy of Arts University in San Francisco, CA. His works are represented in important collections such as the Los Angeles County Museum (LACMA), the Berkeley Art Museum or the San Francisco Museum of Modern Art, CA.



Vessel in the Chaos of the Sea (pink) (2023)

Etching and relief print with hand finishing and collage
with currency

37½ x 28¾ inches

\$5,000 USD FRAMED

P A C E P R I N T S



All Seeing Owl (pink) (2023)

Etching and relief print with hand finishing and collage
with currency
37½ x 28¾ inches

\$5,000 USD FRAMED

P A C E P R I N T S



Beast (pink) (2023)

Etching and relief print with hand finishing
37½ x 28¾ inches

\$5,000 USD FRAMED

P A C E P R I N T S





PACE PRINTS

Blair Saxon-Hill

b. 1979, Eugene, OR

Blair Saxon-Hill creates figurative assemblages that are pedestrian and raw, printing with textiles and collaging their impressions to create unique prints that capture the vivacity of everyday scenes.

Saxon-Hill has been awarded fellowships from the Joan Mitchell Foundation, the Oregon Arts Commission, and the Ford Family Foundation. Her work has been exhibited in solo shows at Collaborations, Copenhagen (2024); SHRINE, New York (2024); SHRINE, Los Angeles (2023); Nino Mier Gallery, Los Angeles (2022); and several others.



Neighborhood Kids (2022)

Monoprint
42 $\frac{3}{4}$ x 39 $\frac{3}{4}$ inches

\$10,000 USD FRAMED



PACE PRINTS

Shahzia Sikander

b. 1969, Lahore, Pakistan

Shahzia Sikander is widely celebrated for subverting Central and South-Asian manuscript painting traditions and launching the form known today as neo-miniature. Sikander's prints introduce elements of experimentation and spontaneity to her practice, as she worked extensively with both Pace Editions and Pace Paper, lending this body of work a complexity of surface that is not easily reduced or defined.

Sikander's solo exhibitions include a recent presentation at the Cleveland Museum, Ohio; the Cincinnati Museum, Ohio; the Venice Biennale, the Museum of Fine Arts, Houston in Texas; the Guggenheim Museum in Bilbao, Spain; the Hirshhorn Museum in Washington, D.C.; and the Whitney Museum of American Art, among many others. Sikander's work is in the collections of several institutions, including the Metropolitan Museum of Art, the National Gallery of Art in Washington, D.C., the Whitney Museum of American Art, the Solomon R. Guggenheim Museum, and many others.



Refuge (2024)

Five color stenciled pulp painting with
hand-applied gold leaf

54 x 35 inches

Edition of 10

\$40,000 USD UNFRAMED

P A C E P R I N T S



ERA - Liquid & Light (2025)

Unique pulp painting
60 x 40 inches, each

\$125,000 USD FRAMED

P A C E P R I N T S

An abstract graphic featuring a series of concentric, vertically-oriented ovals. The ovals are rendered in a gradient of colors, starting from a bright, pale yellow at the center and transitioning through various shades of pink and magenta to a deep, dark purple at the outer edges. The background is a solid, dark purple. The overall effect is a sense of depth and focus, drawing the viewer's eye towards the center.

P A C E P R I N T S

James Turrell

b. 1943, Los Angeles CA

James Turrell, a key figure in the Southern California Light and Space movement of the 1960s and 70s, is best known for his installations that center on the manipulation of light, from projections and sensory deprivation to color fields and site-specific interventions. Turrell has made a number of editions with Pace Prints, utilizing techniques such as ukiyo-e woodcut and traditional aquatint to capture the luminous and otherworldly quality of his temporary exhibition at the Guggenheim, *Aten Reign*.

Recent solo presentations of his work have been held at Almine Rech, Paris (2024); Gagosian, Le Bourget, France (2024-2025); Pace Gallery, Geneva and New York (2024); MASS MoCA, North Adams, MA (2021-2025); and many others.



From Aten Reign (2015)

Ukiyo-e woodcut with relief printing

26 x 18½ inches

Edition of 30

\$18,000 USD UNFRAMED

P A C E P R I N T S



From Aten Reign (2016)

Ukiyo-e woodcut with relief printing

26 x 18½ inches

Edition of 30

\$18,000 USD UNFRAMED

P A C E P R I N T S



PACE PRINTS

Robin F. Williams

b. 1984, Columbus, OH

Known for their large-scale paintings of stylized, sentient, yet ambiguously generated female figures, Robin F. Williams fuses practices from social media channels such as Instagram, TikTok, and YouTube with references to early modernism, pop culture, advertising, and cinema to challenge the systemic conventions around representations of women.

Williams has presented solo exhibitions at P·P·O·W, New York, NY; Various Small Fires, Los Angeles, CA; Bard College at Simon's Rock, Great Barrington, MA; and Jack the Pelican Presents, Brooklyn, NY and is currently in the permanent collections of the Brooklyn Museum, Brooklyn, NY; Collection Majudia, Montreal, Canada; Columbus Museum of Art, Columbus, OH.



Static (2024)

Monoprint
34 x 38 $\frac{3}{4}$ inches

\$20,000 USD FRAMED

P A C E P R I N T S



Splice (2024)

Monoprint
21 x 16½ inches

\$7,500 USD FRAMED

P A C E P R I N T S

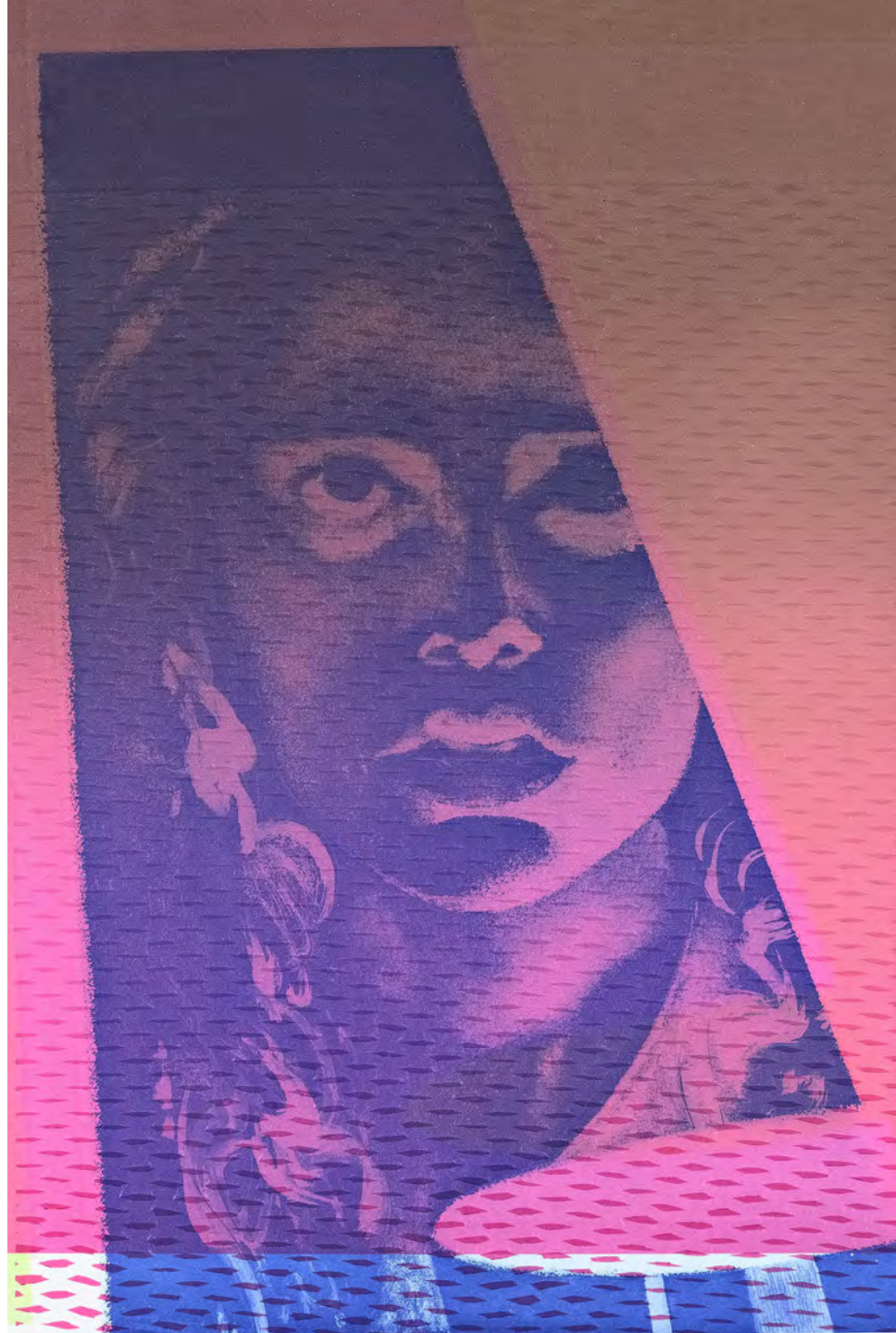


***Splice (2)* (2024)**

Monoprint
21 x 16½ inches

\$7,500 USD FRAMED

P A C E P R I N T S





P A C E P R I N T S

Jonas Wood

b. 1977, Boston, MA

Jonas Wood paints interiors and domestic spaces that he has translated into elemental color and line. With Pace Editions, Wood has explored a breadth of techniques—etching, aquatint, and ukiyo-e woodcut—to produce work both skillful and warm with familiarity.

Jonas Wood has been the subject of solo exhibitions, including his recent solo exhibition at Gagosian, London in 2024, the Hammer Museum, the Dallas Museum of Art, and many others. His work is included in the permanent collections of the Hirshhorn Museum and Sculpture Garden, Washington, Metropolitan Museum of Art, San Francisco Museum of Modern Art, and the Guggenheim Museum.



Japanese Landscape (2022)

Soft ground and aquatint etching

21 x 19½ inches

Edition of 35

\$7,500 USD UNFRAMED

P A C E P R I N T S



Five Bonsais (2024)

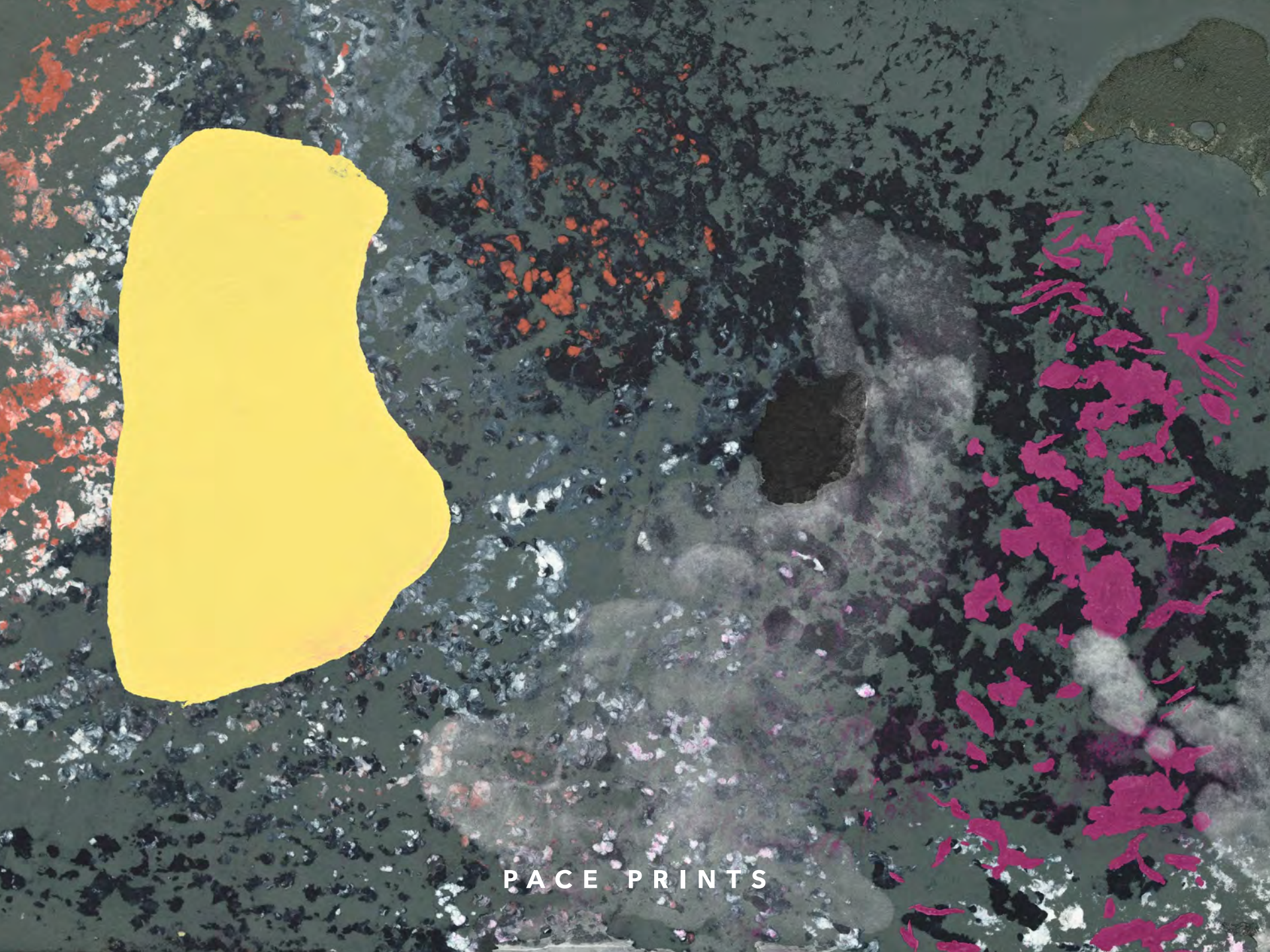
Set of five Japanese Ukiyo-e woodcuts

24¾ x 22 inches, each

Edition of 35

\$85,000 USD UNFRAMED

P A C E P R I N T S



P A C E P R I N T S

Kennedy Yanko

b. 1988, St. Louis, MO

Kennedy Yanko, best known for her sculptures composed of scrap metal, expands on her practice at Pace Paper through this new unique work. She layers pigmented pulp in hand manipulated formations five times before transferring wax pastel and drawing on the surface. Similarly to her sculptural work, *On the spot* contrasts spontaneity with control, and softer materials with harder forms.

Recent solo presentations include shows at James Cohan, New York (forthcoming in 2025); Salon 94, Paris and Miami (2023); Jeffrey Deitch, New York (2023); Salon 94, New York (2021); and many others.



On the spot (2024)

Handmade paper with wax pastel transfer and drawing
63½ x 35 inches

\$25,000 USD FRAMED

P A C E P R I N T S

536 WEST 22ND STREET
NEW YORK, NY 10011

info@paceprints.com
paceprints.com

(212) 629-6100

P A C E P R I N T S