

Garth Greenan Gallery 545 West 20th Street New York New York 10011 212 929 1351 www.garthgreenan.com

FOR IMMEDIATE RELEASE

Contact: Garth Greenan
(212) 929-1351
info@garthgreenan.com
www.garthgreenan.com

Art Basel Miami Beach



Jaune Quick-to-See Smith, *Trade Canoe: Wonderland*, 2023, Acrylic and paper collage on canvas, 60 x 270 inches

For the 2023 edition of Art Basel Miami Beach, Garth Greenan Gallery is pleased to present a selection of works by Melissa Cody, Howardena Pindell, Jaune Quick-to-See Smith, Emmi Whitehorse, and Franklin Williams. It is the first time the gallery will present the work of Franklin Williams.

In the early '70s, Howardena Pindell began spraying paint onto canvases through hole-punched cardstock, forming layers of vibrant dots—a technique resulting in a sensuous interplay between background and foreground. In recent years, Pindell revisited the technique for the first time in over three decades. The artist's *Tesseract* series combines the staggering fluctuations of light and color that are characteristic of the spray-dot works with Platonic geometric shapes. In *Tesseract #11* (2023), light radiates from the center of the painting, revealing elemental forms that appear like celestial bodies or microbiota. The presentation will also include Pindell's *Untitled #25 (For a Rabbit Named Pink)* (2023)—an expanse of pale pink that ruptures, revealing a tenuous substrate of thin vertical canvas strips. The composition is punctuated with vibrant dots of primary color. The painting vacillates between mono- and polychromy; its near-square boundaries fray and warp according to the material whims of the canvas fibers.

The exhibition traces the development of Emmi Whitehorse's work from the late '80s to today. Over time, Whitehorse's more concrete forms dematerialized within an increasingly ephemeral substrate. Her intimate and intuitive compositions make conscious reference to the Navajo philosophy *Hózhó*—seeking harmony in life, mind, body, and nature. While light and meditative, the works are animated by abstract gestural marks that organize vaporous fields of color.

A series of new works by Franklin Williams displays the artist's idiosyncratic, constantly evolving style. From the '60s onward, his work has been foundational to a number of movements, including Nut Art and the Pattern and Decoration movement. Williams' new works draw on these historical elements, introducing woven elements that create vivid tactility. Strands of yarn stitch the painted surfaces as biological tissue, protruding like thick strands of hair.

Jaune Quick-to-See Smith's selection will draw from the artist's recent work, including the monumental *Trade Canoe: Wonderland* (2023), measuring over 22 feet in width. The powerful sculpture *Fear of Knowledge* (2023) will also feature: a canoe-shaped frame cradles a pile of books that have been banned in school districts and libraries across the United States. Perched atop is a raven—a bird with potent symbolism in many cultures.

Fourth-generation Navajo weaver Melissa Cody creates intricate tapestries that are often associated with the Germantown Revival—a stylistic movement named after the vividly-dyed government wool from Germantown, Pennsylvania, that was supplied to the Navajo during the time of the Long Walk. The weaving style was born of a complex interaction of traditional and historical contingencies. *Scaling the Caverns* (2023) carries that balance of tradition, history, and contemporaneity forward. Navajo patterns are recombined into sophisticated geometric overlays and haptic color schemes. Cody has often mentioned the formative visual influence of the 1980s video games with which she grew up; in this instance, her work is literally digitally mediated before being woven on a Jacquard machine. For Cody—as for Smith and Whitehorse—the very act of creating abstract contemporary art is a rejection of the persistent historicization of Native Americans. Notably, *Scaling the Caverns* is an artist proof from a new series of Jacquard works that are currently on view in the Hammer Museum’s biennial exhibition *Made in L.A. 2023: Acts of Living*.

Garth Greenan Gallery is pleased to represent Melissa Cody, Howardena Pindell, Jaune Quick-to-See Smith, Emmi Whitehorse, and Franklin Williams.

###



Melissa Cody

Scaling the Caverns, 2023

Jacquard wool tapestry, fringe aniline dyed wool

98 x 48 inches

248.9 x 121.9 cm

Edition of 1, 2AP

(Inv# CODED002.AP2)

\$65,000



Melissa Cody

Landscapes of Home, 2023

Jacquard wool tapestry, fringe aniline dyed wool

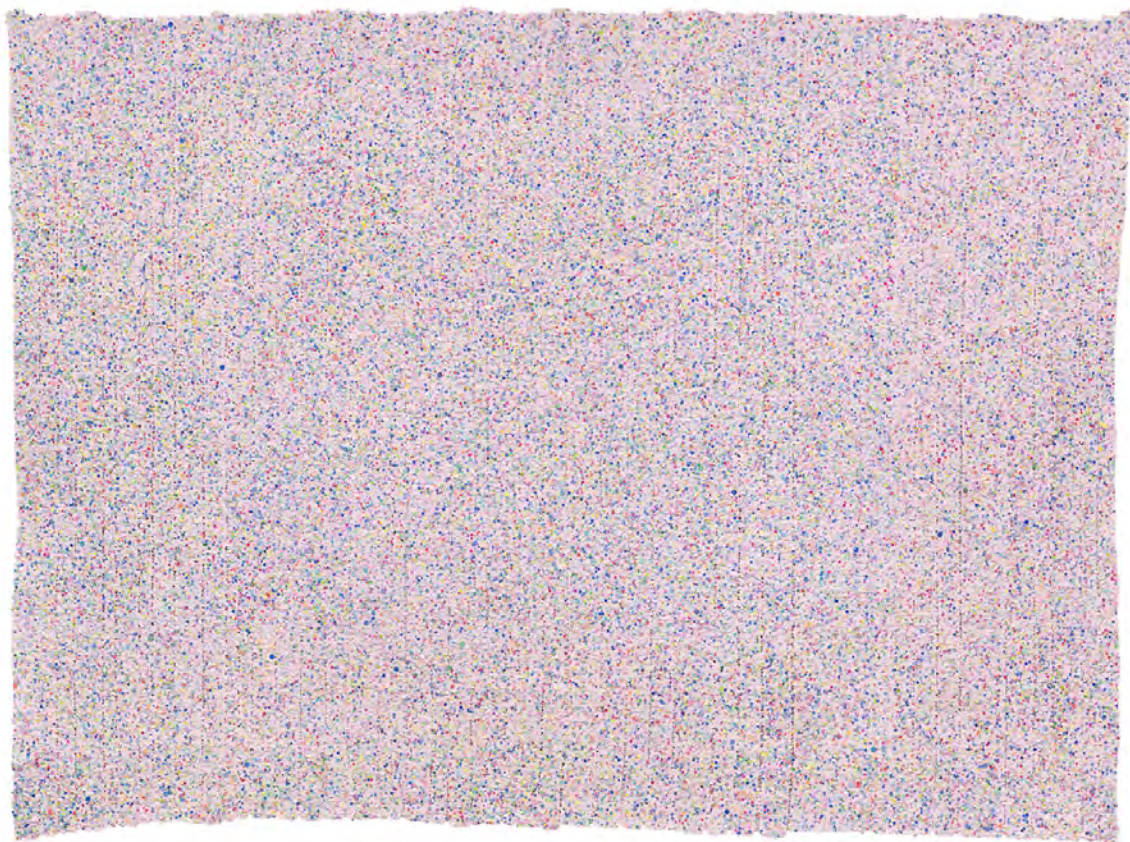
75 1/2 x 100 inches

191.8 x 254 cm

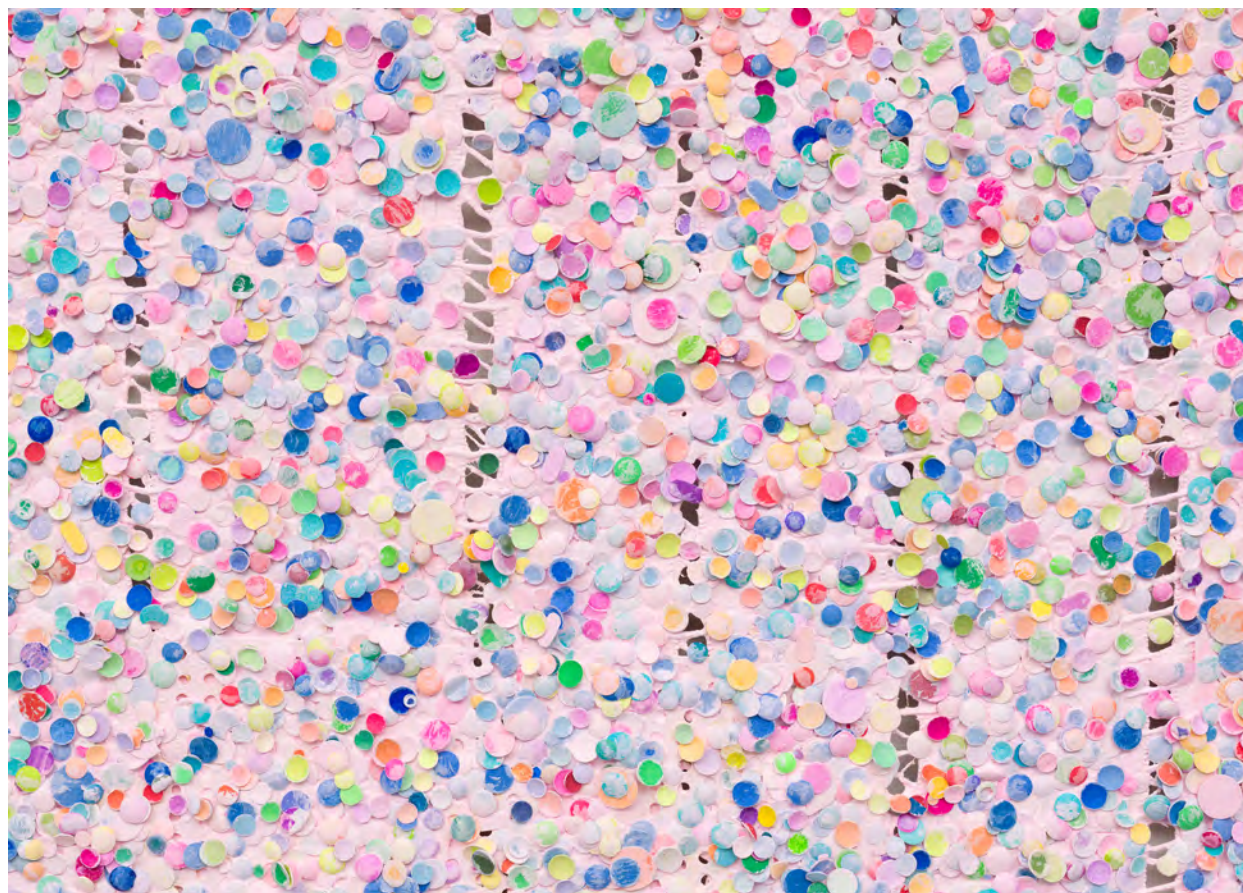
Edition of 1, 1AP

(Inv# CODED004.AP1)

\$100,000



Howardena Pindell (1943–)
Untitled #25 (For a Rabbit Named Pink), 2023
Mixed media on canvas
81 1/2 x 107 inches
207 x 271.8 cm
Signed and dated, verso
(Inv# PINPT334)
\$875,000



Howardena Pindell (1943–)
Untitled #25 (For a Rabbit Named Pink), 2023
Mixed media on canvas
81 1/2 x 107 inches
207 x 271.8 cm
Signed and dated, verso
(Inv# PINPT334)
\$875,000



Howardena Pindell (1943–)
Untitled #25 (For a Rabbit Named Pink), 2023
Mixed media on canvas
81 1/2 x 107 inches
207 x 271.8 cm
Signed and dated, verso
(Inv# PINPT334)
\$875,000



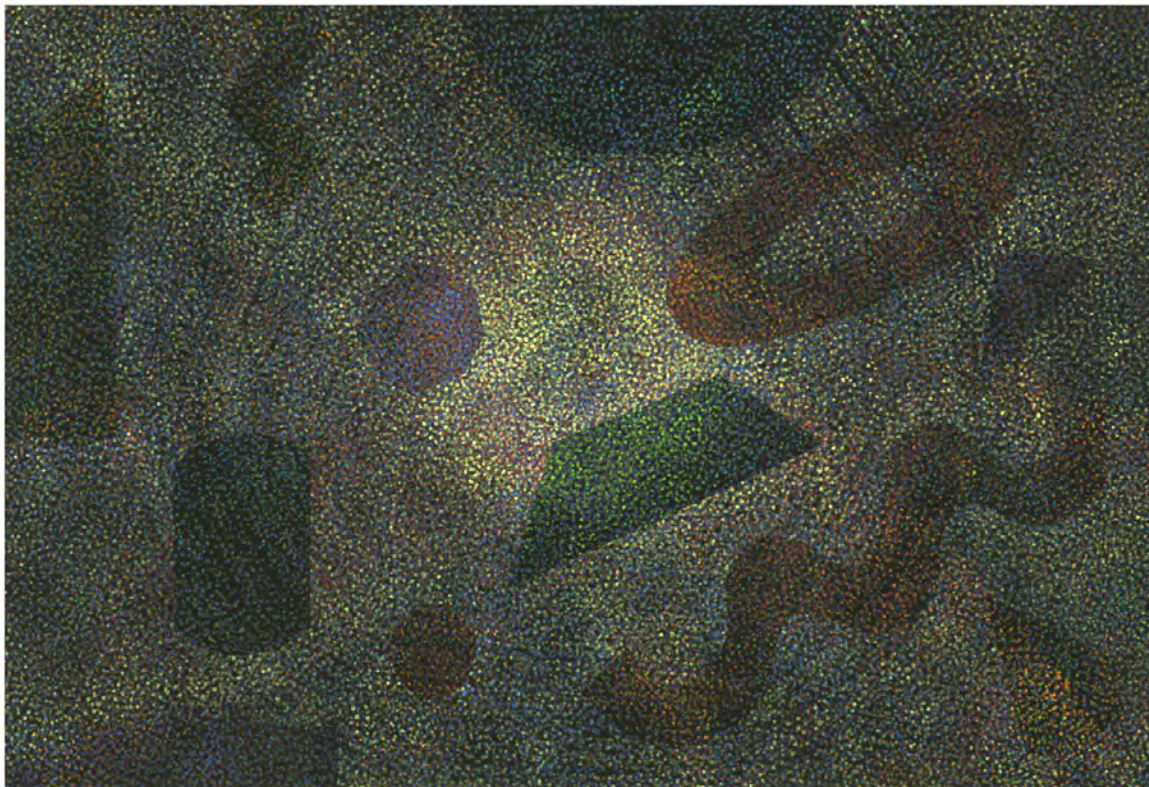
Howardena Pindell (1943–)
Untitled #6 (Ladybug/Sweden), 2022
Mixed media on canvas
86 x 86 inches
218.4 x 218.4 cm
Signed and dated, verso
(Inv# PINPT241)
\$875,000



Howardena Pindell (1943–)
Untitled #6 (Ladybug/Sweden), 2022
Mixed media on canvas
86 x 86 inches
218.4 x 218.4 cm
Signed and dated, verso
(Inv# PINPT241)
\$875,000



Howardena Pindell (1943–)
Untitled #6 (Ladybug/Sweden), 2022
Mixed media on canvas
86 x 86 inches
218.4 x 218.4 cm
Signed and dated, verso
(Inv# PINPT241)
\$875,000



Howardena Pindell (1943–)

Tesseract #11, 2023

Acrylic on canvas

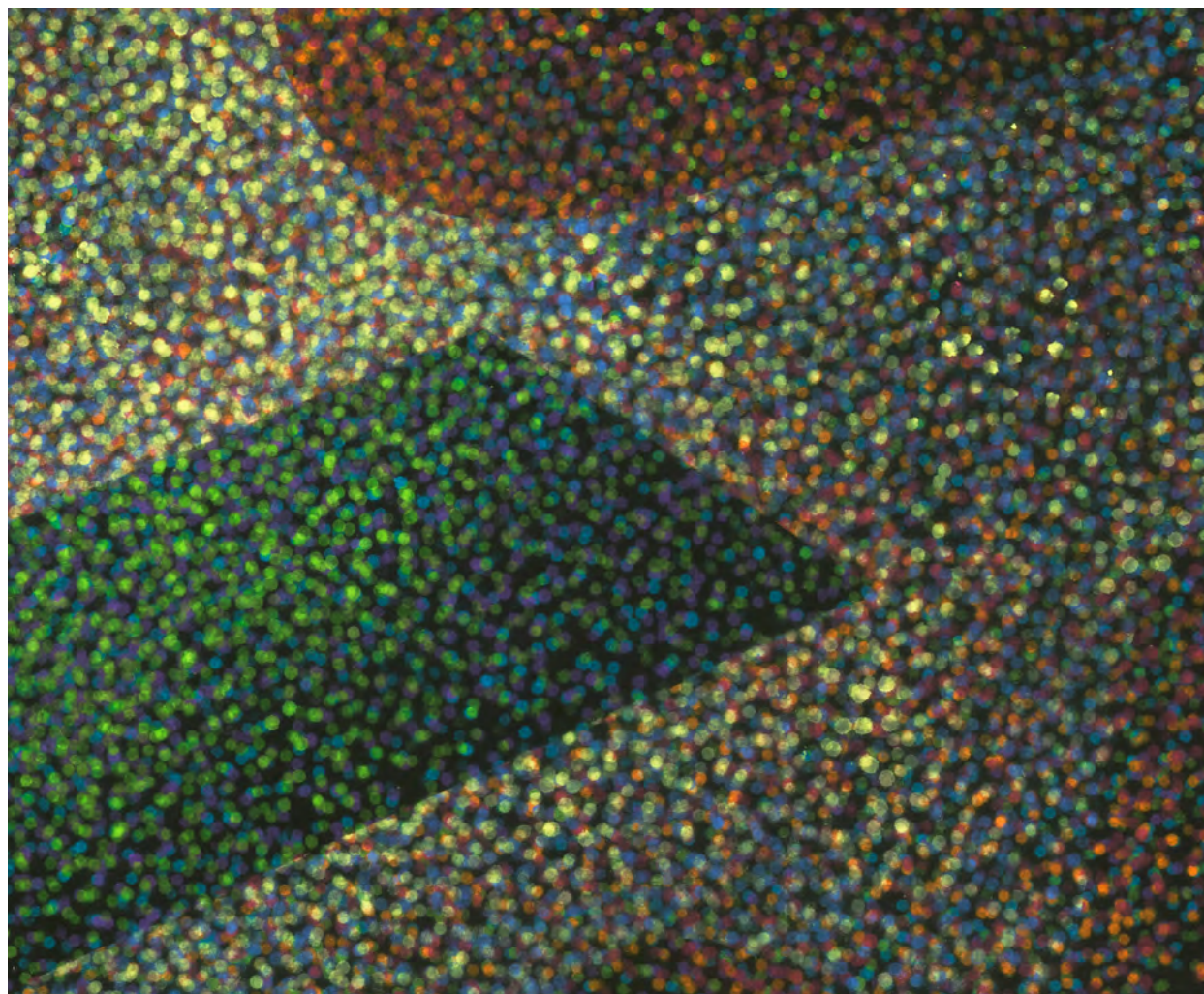
65 x 95 inches

165.1 x 241.3 cm

Signed and dated, verso

(Inv# PINPT343)

\$500,000



Howardena Pindell (1943–)

Tesseract #11, 2023

Acrylic on canvas

65 x 95 inches

165.1 x 241.3 cm

Signed and dated, verso

(Inv# PINPT343)

\$500,000



Howardena Pindell (1943–)

Tesseract #9, 2023

Acrylic on canvas

72 x 60 inches

182.9 x 152.4 cm

Signed and dated, verso

(Inv# PINPT304)

\$400,000



Howardena Pindell (1943–)

Tesseract #9, 2023

Acrylic on canvas

72 x 60 inches

182.9 x 152.4 cm

Signed and dated, verso

(Inv# PINPT304)

\$400,000



Jaune Quick-to-See Smith

Trade Canoe: Wonderland, 2023

Acrylic and paper collage on canvas

60 x 270 inches

152.4 x 685.8 cm

Signed and dated, verso

(Inv# QTSP244)

\$875,000



Jaune Quick-to-See Smith

Trade Canoe: Wonderland, 2023

Acrylic and paper collage on canvas

60 x 270 inches

152.4 x 685.8 cm

Signed and dated, verso

(Inv# QTSPT244)

\$875,000



Jaune Quick-to-See Smith

Trade Canoe: Thanks for the Memories, 2023

Acrylic and paper collage on canvas

72 x 240 inches

182.9 x 609.6 cm

Signed and dated, verso

(Inv# QTSPT243)

\$750,000



Jaune Quick-to-See Smith

Trade Canoe: Thanks for the Memories, 2023

Acrylic and paper collage on canvas

72 x 240 inches

182.9 x 609.6 cm

Signed and dated, verso

(Inv# QTSPT243)

\$750,000



Jaune Quick-to-See Smith

Fear of Knowledge, 2023

Mixed media

8 x 77 x 15 inches

20.3 x 195.6 x 38.1 cm

Signed and dated

(Inv# QTSSP023)

\$450,000



Jaune Quick-to-See Smith

Fear of Knowledge, 2023

Mixed media

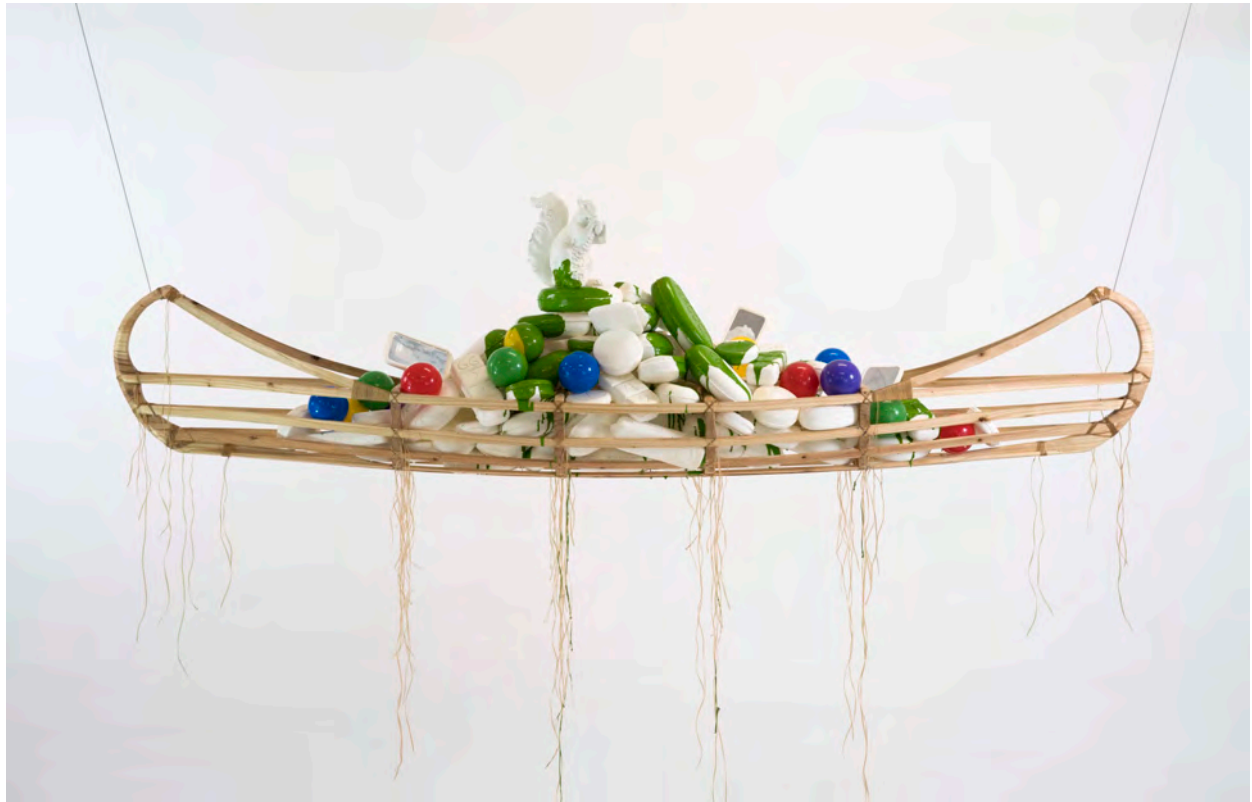
8 x 77 x 15 inches

20.3 x 195.6 x 38.1 cm

Signed and dated

(Inv# QTSSP023)

\$450,000



Jaune Quick-to-See Smith

Time Travel Canoe, 2023

Mixed media

13 x 76 x 15 inches

33 x 193 x 38.1 cm

Signed and dated

(Inv# QTSSP022)

\$450,000



Jaune Quick-to-See Smith

Time Travel Canoe, 2023

Mixed media

13 x 76 x 15 inches

33 x 193 x 38.1 cm

Signed and dated

(Inv# QTSSP022)

\$450,000



Jaune Quick-to-See Smith

Ronan Robe #8, 1982

Mixed media on canvas

60 x 55 inches

152.4 x 139.7 cm

Signed and dated, verso

(Inv# QTSPT176)

\$875,000



Jaune Quick-to-See Smith

Ronan Robe #9, 1982

Mixed media on canvas

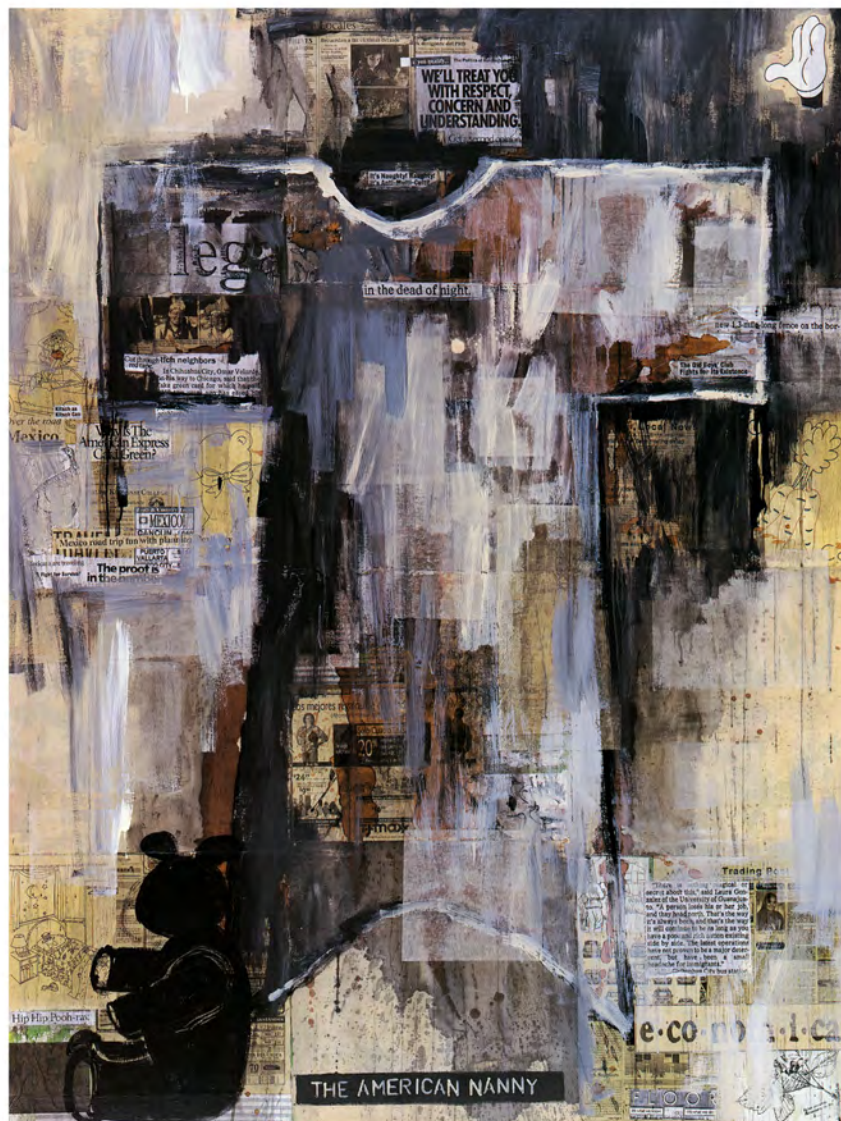
64 x 55 inches

162.6 x 139.7 cm

Signed and dated, verso

(Inv# QTSP179)

\$875,000



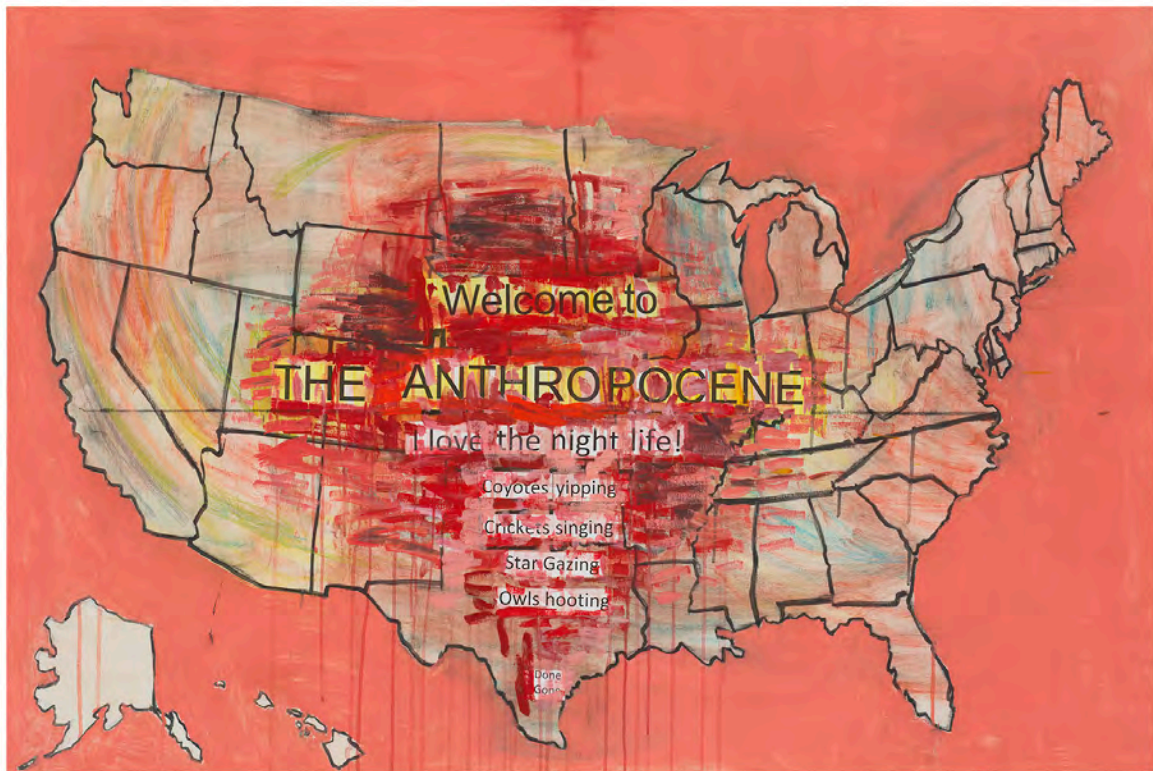
Jaune Quick-to-See Smith
I See Red: The American Nanny, 1996
Mixed media on canvas
80 x 60 inches
203.2 x 152.4 cm
Signed and dated, verso
(Inv# QTSP139)
\$875,000



Jaune Quick-to-See Smith
She, Her, Hers: Mutter Erde, 2023
Mixed media on canvas
40 x 60 inches
101.6 x 152.4 cm
Signed and dated, verso
(Inv# QTSPT222)
\$450,000



Jaune Quick-to-See Smith
She, Her, Hers: Mutter Erde, 2023
Mixed media on canvas
40 x 60 inches
101.6 x 152.4 cm
Signed and dated, verso
(Inv# QTSP222)
\$450,000



Jaune Quick-to-See Smith

The Anthropocene, 2023

Mixed media on canvas

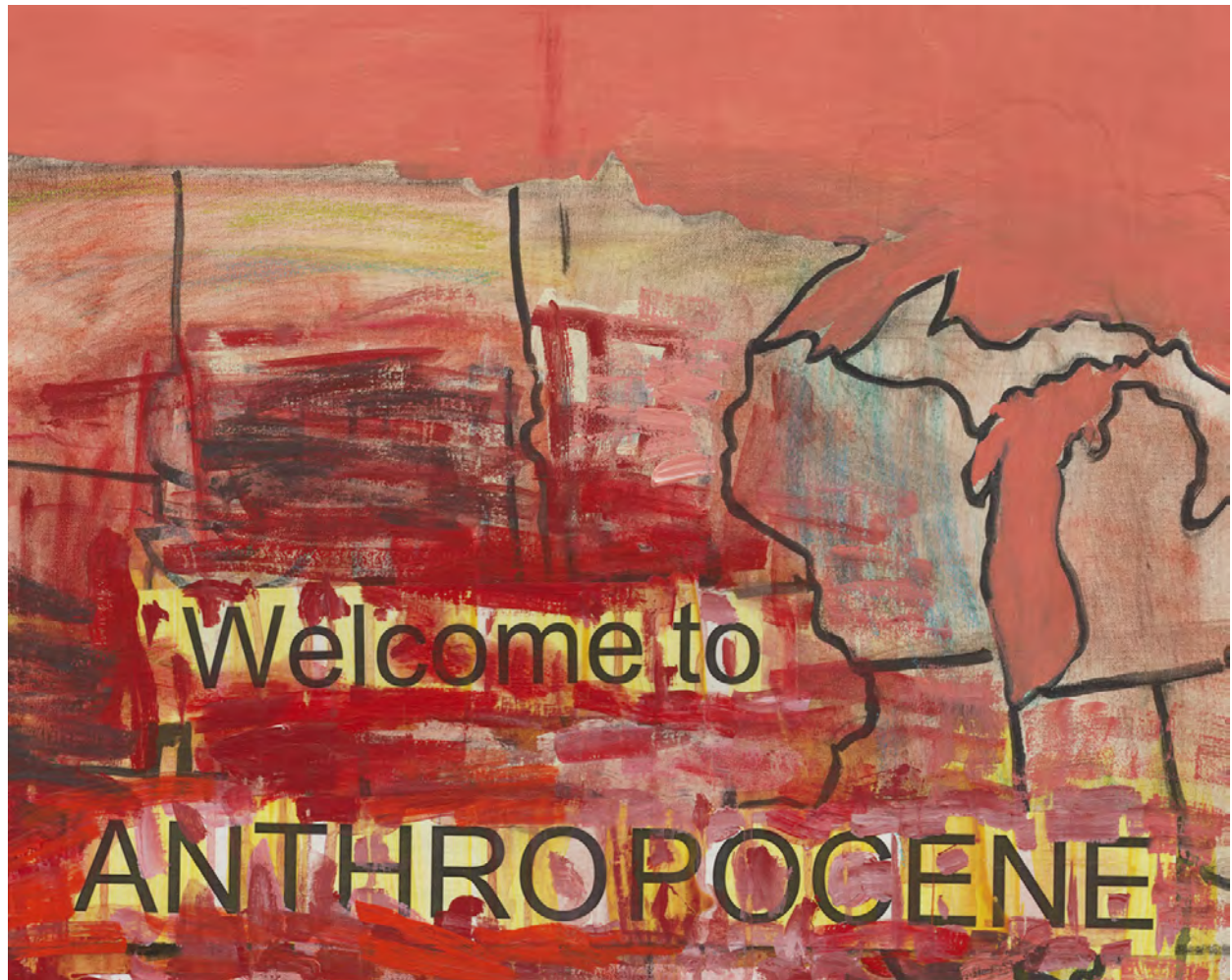
40 x 60 inches

101.6 x 152.4 cm

Signed and dated, verso

(Inv# QTSPT241)

\$450,000



Jaune Quick-to-See Smith

The Anthropocene, 2023

Mixed media on canvas

40 x 60 inches

101.6 x 152.4 cm

Signed and dated, verso

(Inv# QTSPT241)

\$450,000



Emmi Whitehorse

Topiary, 2023

Mixed media on canvas

51 x 78 1/2 inches

Signed and dated, verso

(Inv# WHIPT088)

\$95,000

SOLD



Emmi Whitehorse

Coral Bed, 2023

Mixed media on canvas

51 x 38.5 inches

129.5 x 97.8 cm

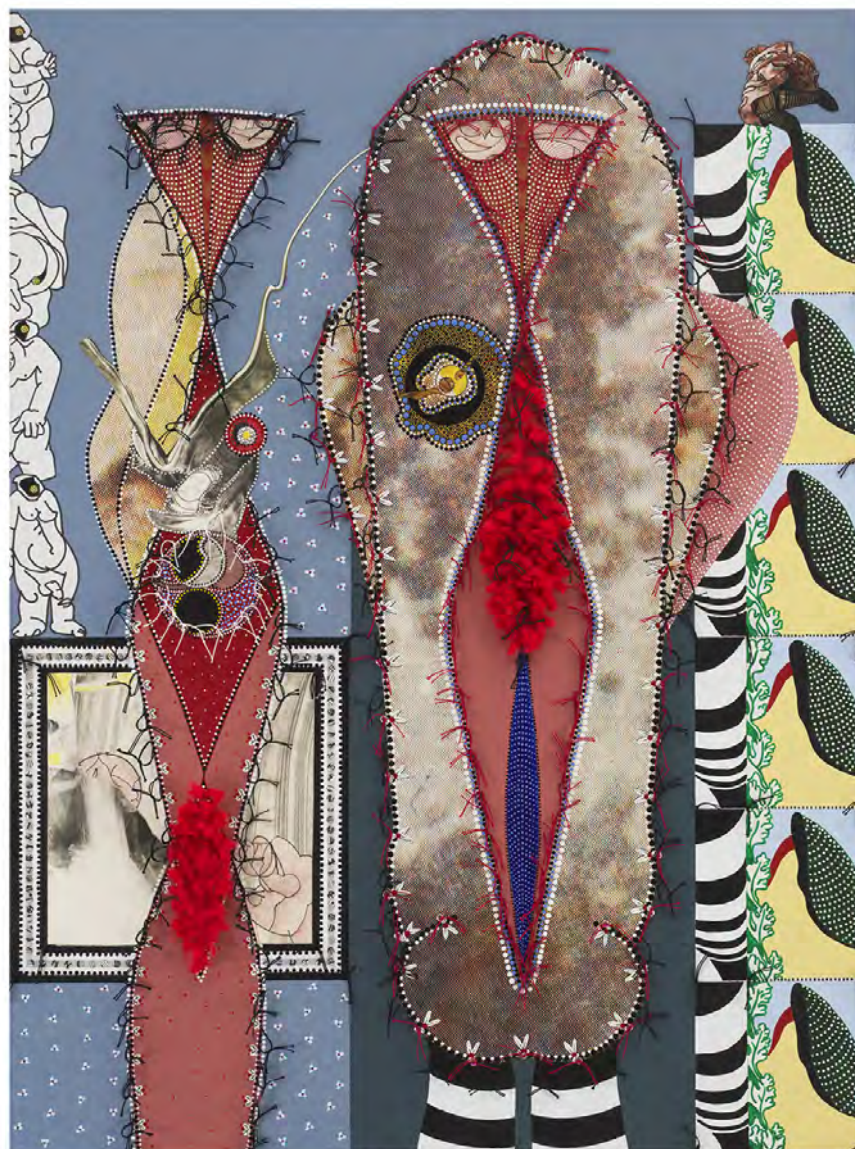
Signed and dated

(Inv# WHIPT086)

\$65,000



Emmi Whitehorse
Pollinating Coral, 2023
Mixed media on canvas
51 x 38.5 inches
Signed and dated
(Inv# WHIPT085)
\$65,000



Franklin Williams

Desire and Obsession, 2020

Acrylic on canvas with collage, yarn and crochet thread

40 x 30 inches

101.6 x 76.2 cm

Signed and dated, verso

FW.2020.006

(Inv# WILPT009)

\$30,000



Franklin Williams

Desire and Obsession, 2020

Acrylic on canvas with collage, yarn and crochet thread

40 x 30 inches

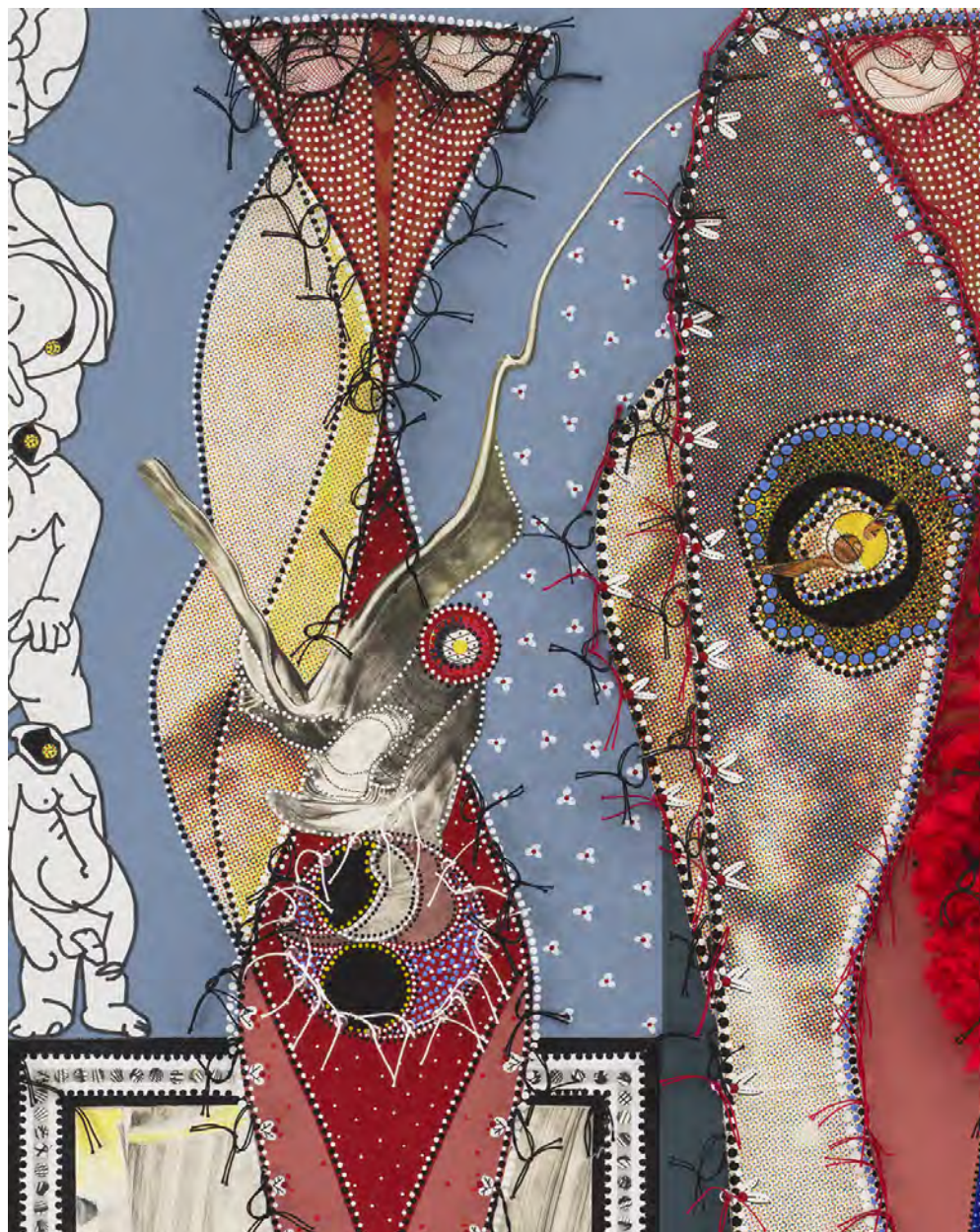
101.6 x 76.2 cm

Signed and dated, verso

FW.2020.006

(Inv# WILPT009)

\$30,000



Franklin Williams

Desire and Obsession, 2020

Acrylic on canvas with collage, yarn and crochet thread

40 x 30 inches

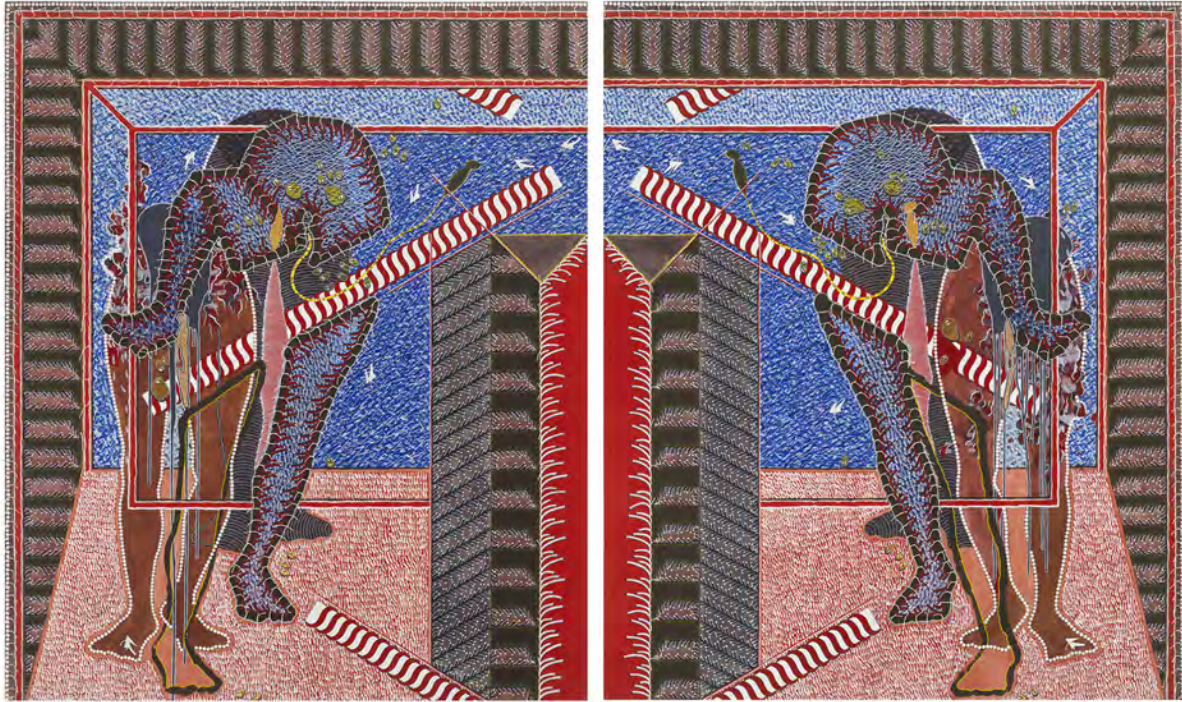
101.6 x 76.2 cm

Signed and dated, verso

FW.2020.006

(Inv# WILPT009)

\$30,000



Franklin Williams

Song Sung, 1976

Acrylic, paper, and crochet thread on canvas

72 x 120 inches

182.9 x 304.8 cm

Signed and dated, verso

FW.1976.003

(Inv# WILPT008)

\$200,000



Franklin Williams

Song Sung, 1976

Acrylic, paper, and crochet thread on canvas

72 x 120 inches

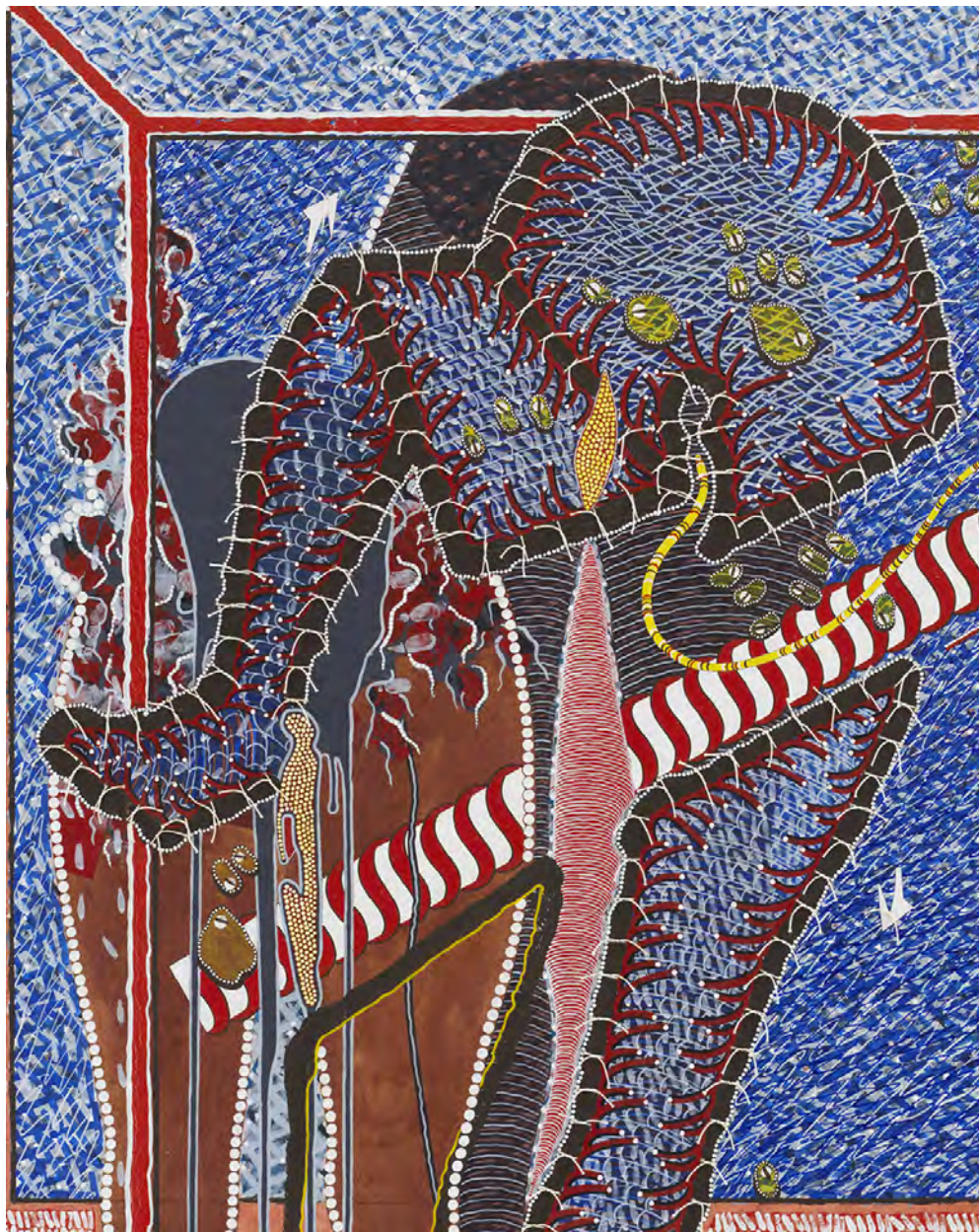
182.9 x 304.8 cm

Signed and dated, verso

FW.1976.003

(Inv# WILPT008)

\$200,000



Franklin Williams

Song Sung, 1976

Acrylic, paper, and crochet thread on canvas

72 x 120 inches

182.9 x 304.8 cm

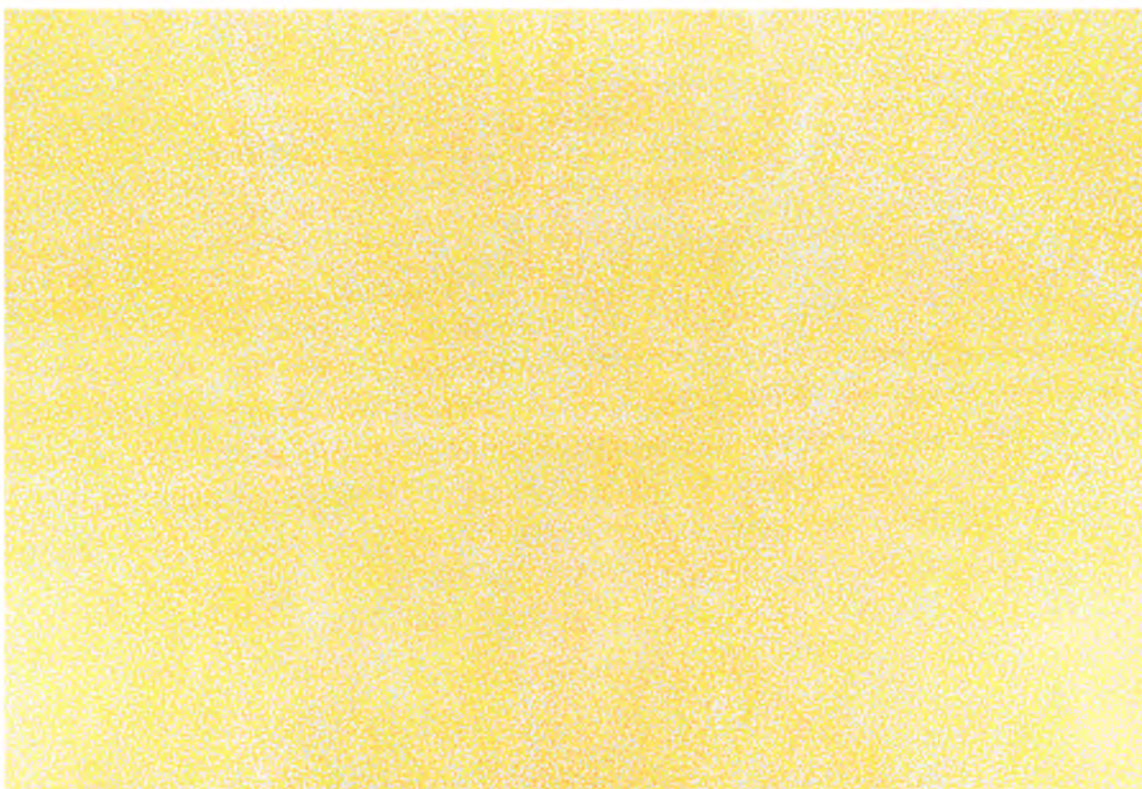
Signed and dated, verso

FW.1976.003

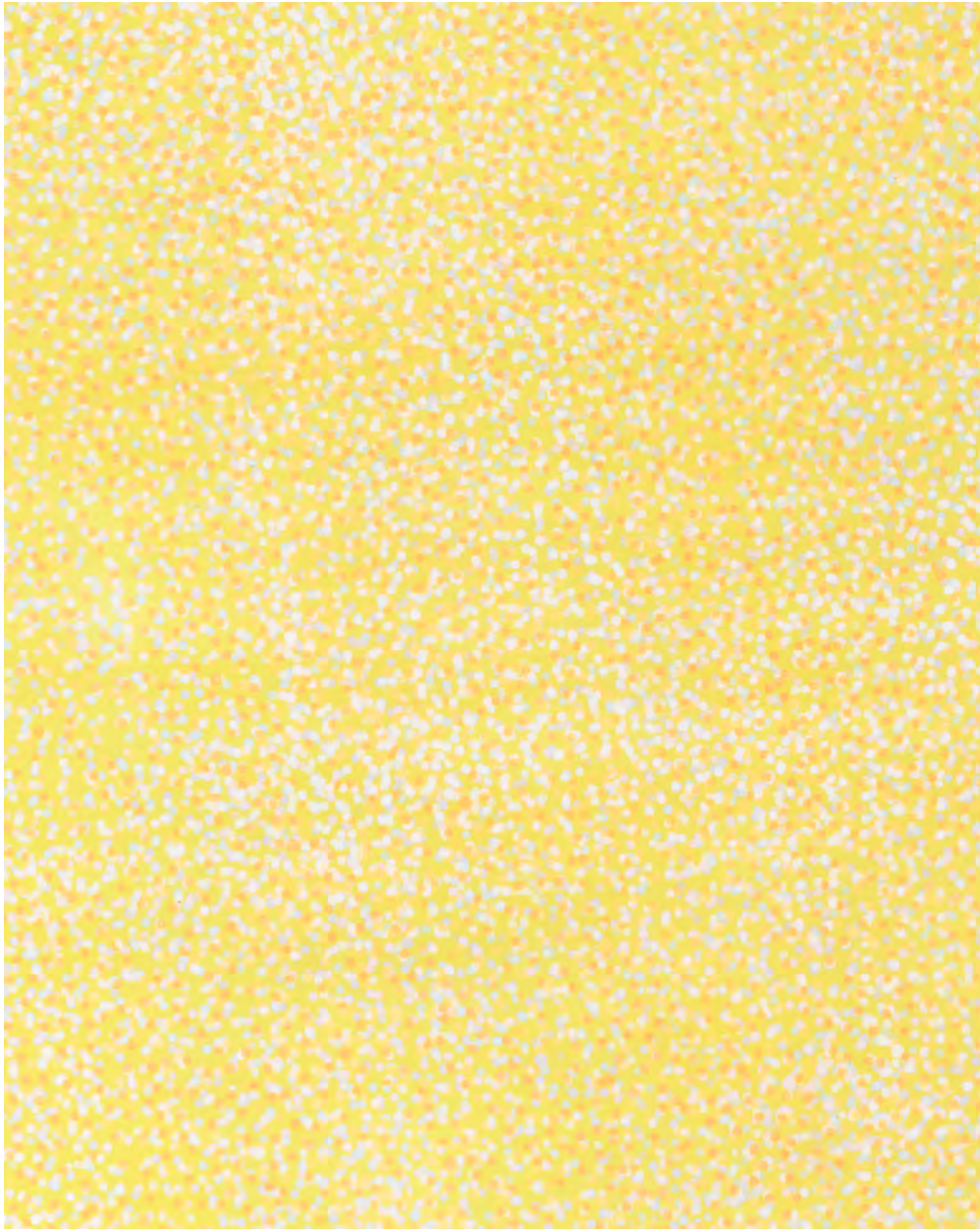
(Inv# WILPT008)

\$200,000

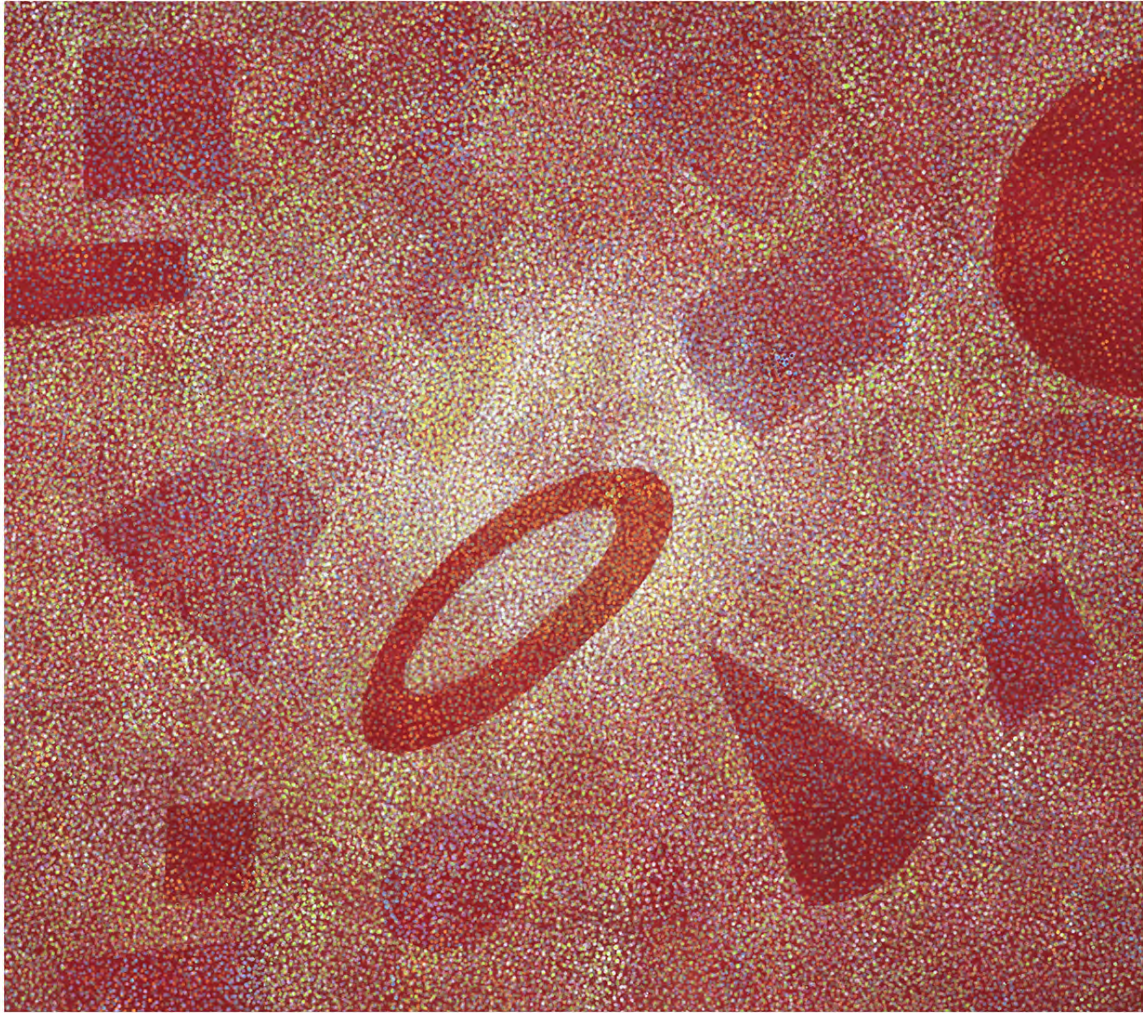
Additional Viewing Room works



Howardena Pindell (1943–)
Reflections/Horizon Line, 2022
Acrylic on canvas
65 x 95 inches
165.1 x 241.3 cm
Signed and dated, verso
(Inv# PINPT269)
\$500,000



Howardena Pindell (1943–)
Reflections/Horizon Line, 2022
Acrylic on canvas
65 x 95 inches
165.1 x 241.3 cm
Signed and dated, verso
(Inv# PINPT269)
\$500,000



Howardena Pindell (1943–)

Tesseract #10, 2023

Acrylic on canvas

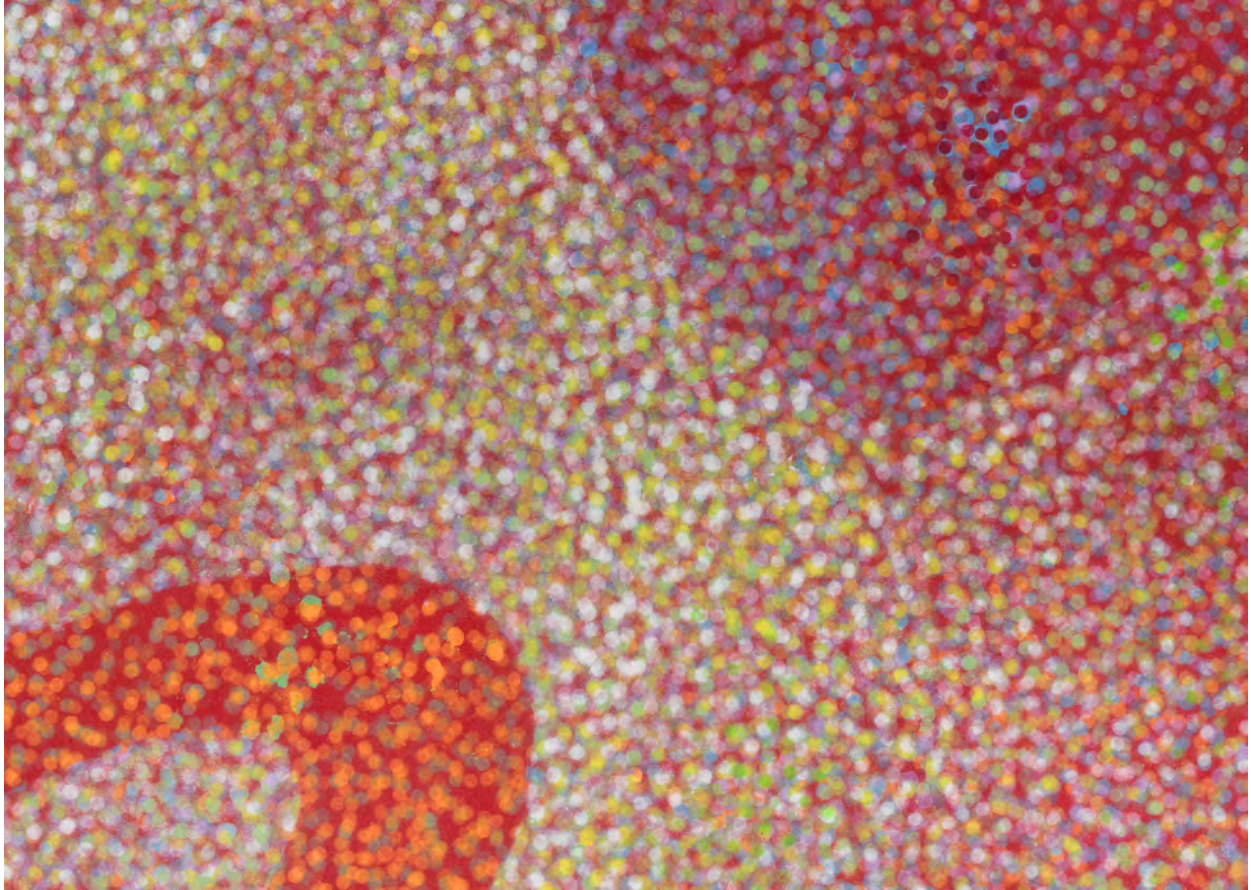
78 x 88 inches

198.1 x 223.5 cm

Signed and dated, verso

(Inv# PINPT339)

\$500,000



Howardena Pindell (1943–)

Tesseract #10, 2023

Acrylic on canvas

78 x 88 inches

198.1 x 223.5 cm

Signed and dated, verso

(Inv# PINPT339)

\$500,000



Howardena Pindell (1943–)

Tesseract #12, 2023

Acrylic on canvas

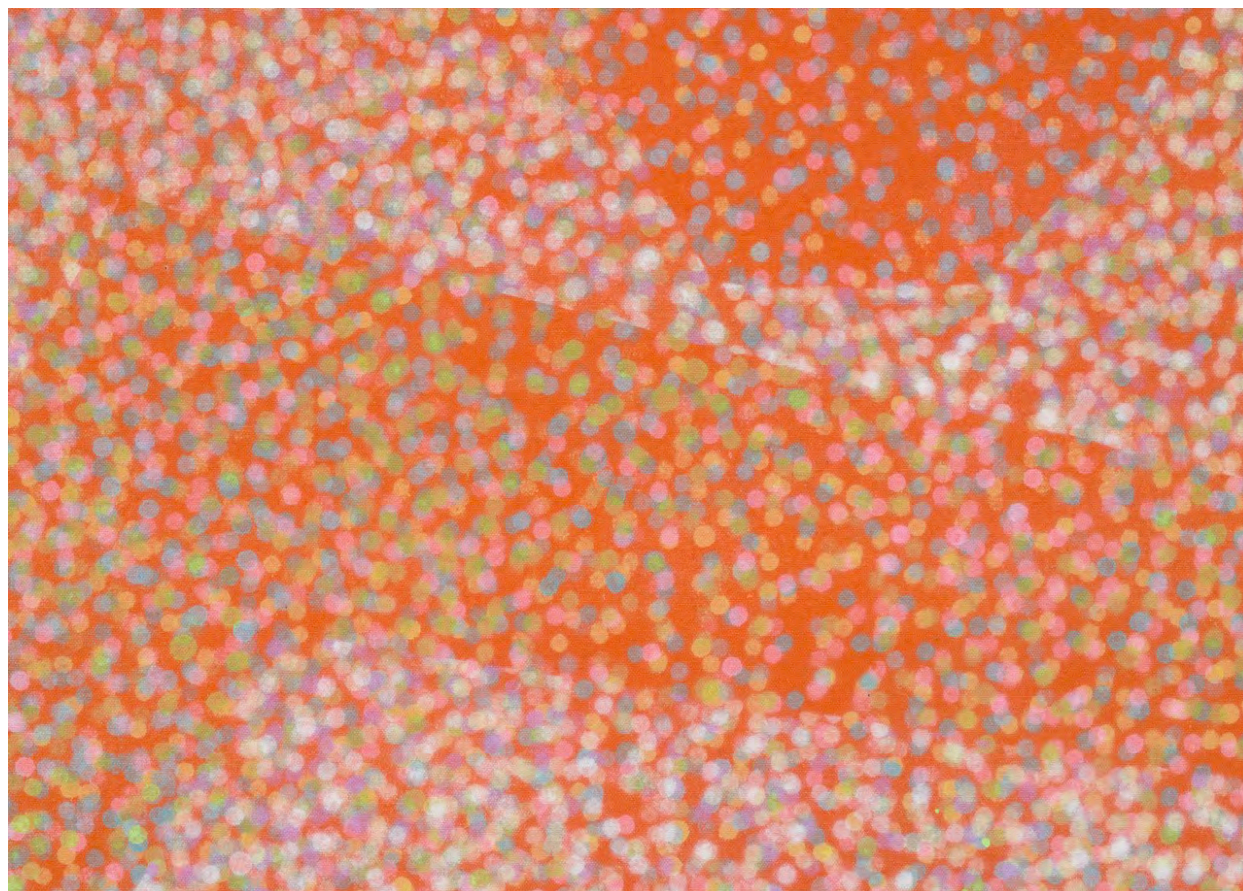
65 x 95 inches

165.1 x 241.3 cm

Signed and dated

(Inv# PINPT346)

\$500,000



Howardena Pindell (1943–)

Tesseract #12, 2023

Acrylic on canvas

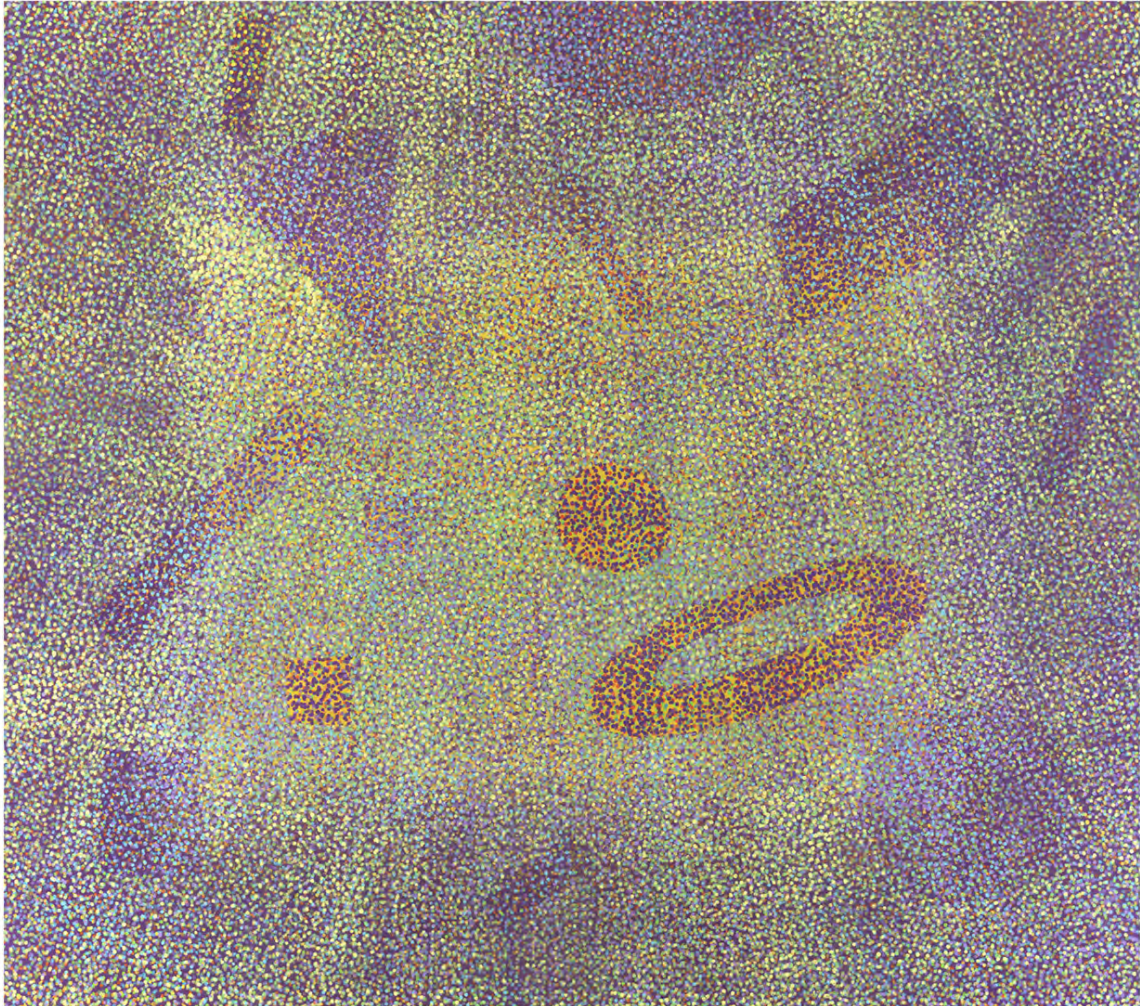
65 x 95 inches

165.1 x 241.3 cm

Signed and dated

(Inv# PINPT346)

\$500,000



Howardena Pindell (1943–)

Tesseract #5, 2023

Acrylic on canvas

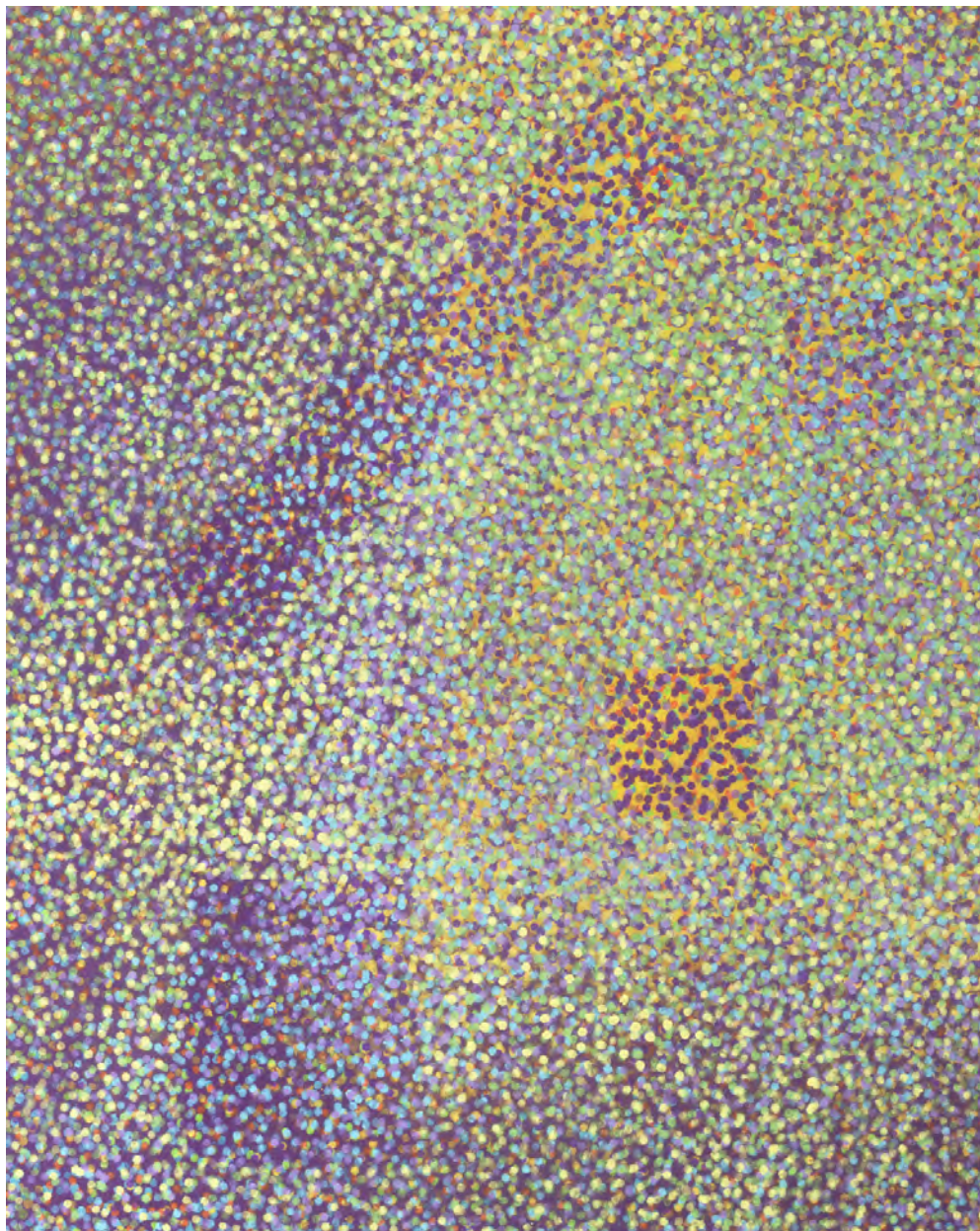
78 x 88 inches

198.1 x 223.5 cm

Signed and dated, verso

(Inv# PINPT302)

\$500,000



Howardena Pindell (1943–)

Tesseract #5, 2023

Acrylic on canvas

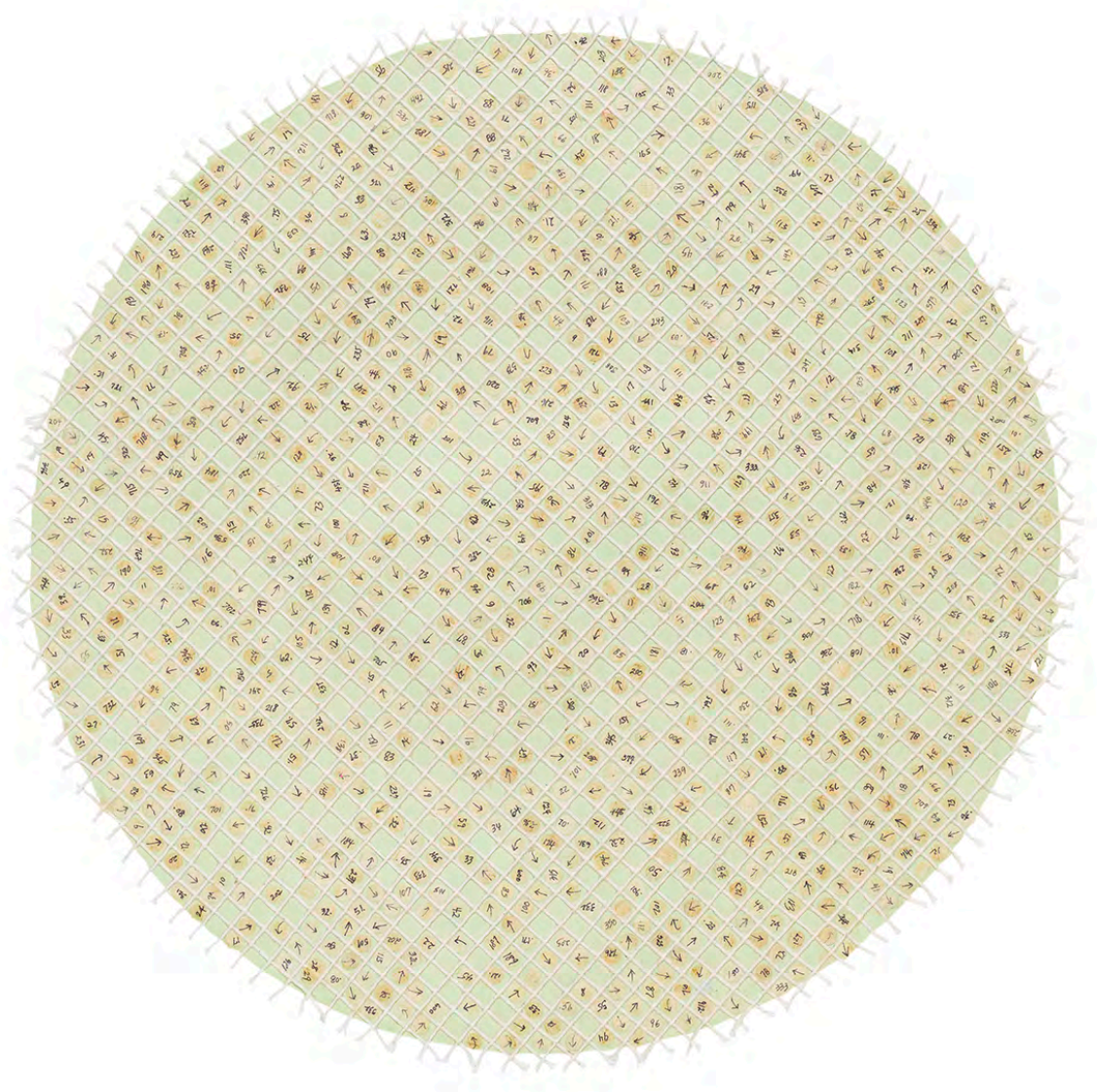
78 x 88 inches

198.1 x 223.5 cm

Signed and dated, verso

(Inv# PINPT302)

\$500,000



Howardena Pindell (1943–)

Untitled, 2021

Mixed media paper collage

18 x 18 inches

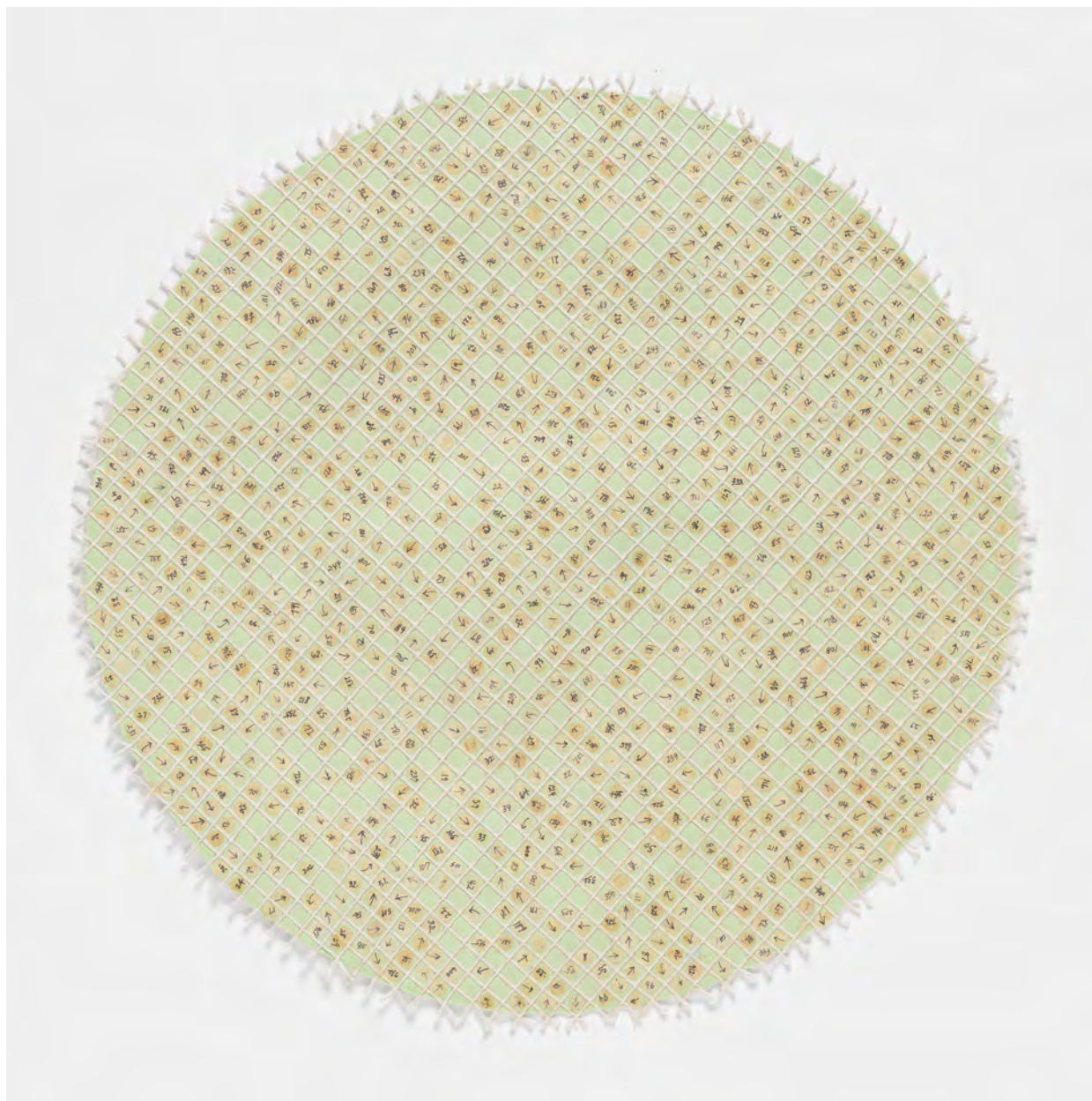
45.7 x 45.7 cm

Signed and dated, verso

EP_2021_HP032

(Inv# PINPP963)

\$30,000



Howardena Pindell (1943–)

Untitled, 2021

Mixed media paper collage

18 x 18 inches

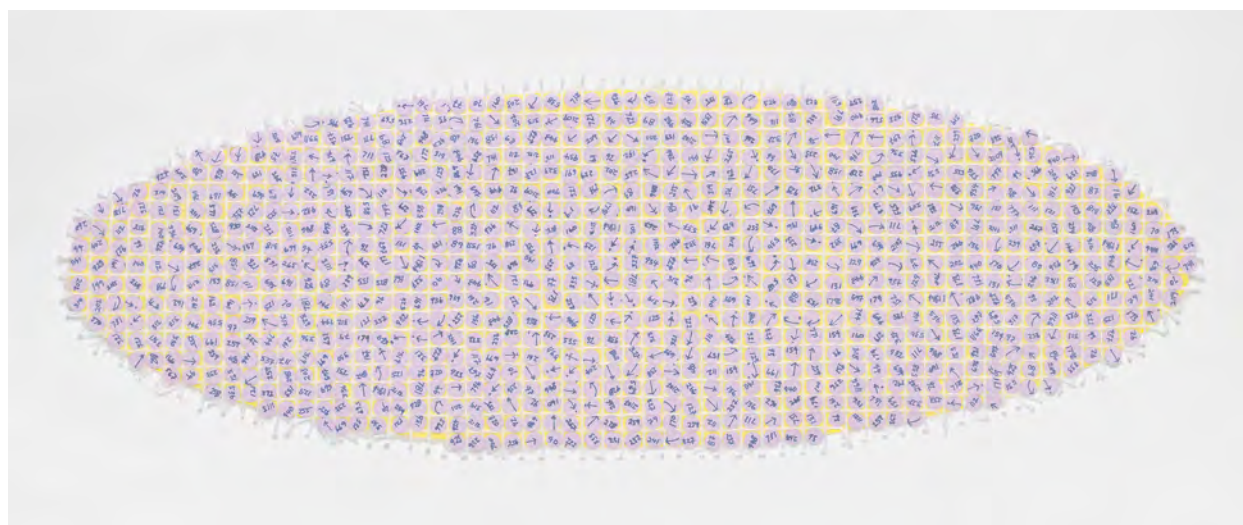
45.7 x 45.7 cm

Signed and dated, verso

EP_2021_HP032

(Inv# PINPP963)

\$30,000



Howardena Pindell (1943–)

Untitled, 2022

Mixed media paper collage

7 1/4 x 21 1/2 inches

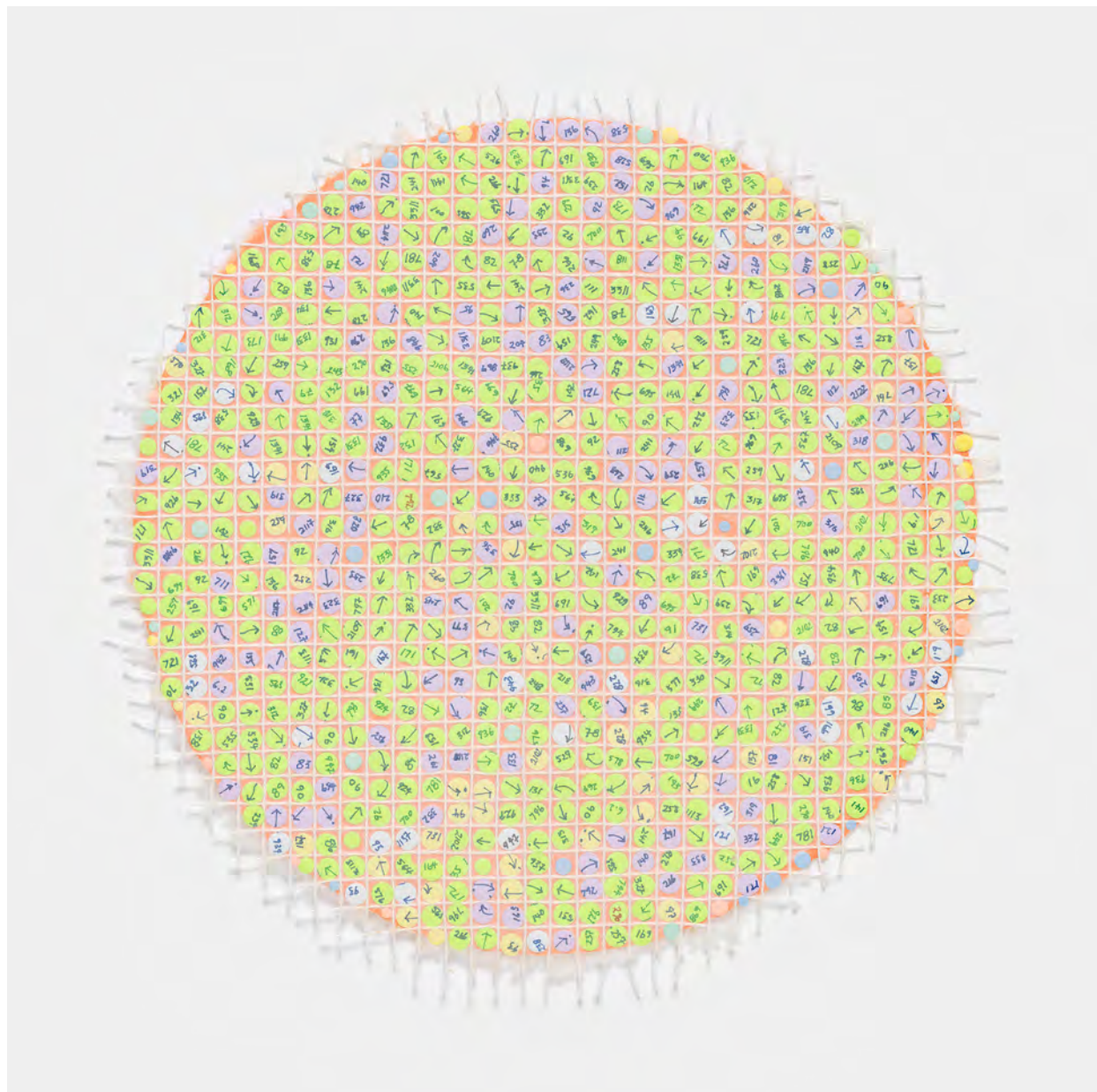
18.4 x 54.6 cm

Signed and dated, verso

EP_2022_HP058

(Inv# PINPP956)

\$30,000



Howardena Pindell (1943–)

Untitled, 2022

Mixed media paper collage

13 1/2 x 13 inches

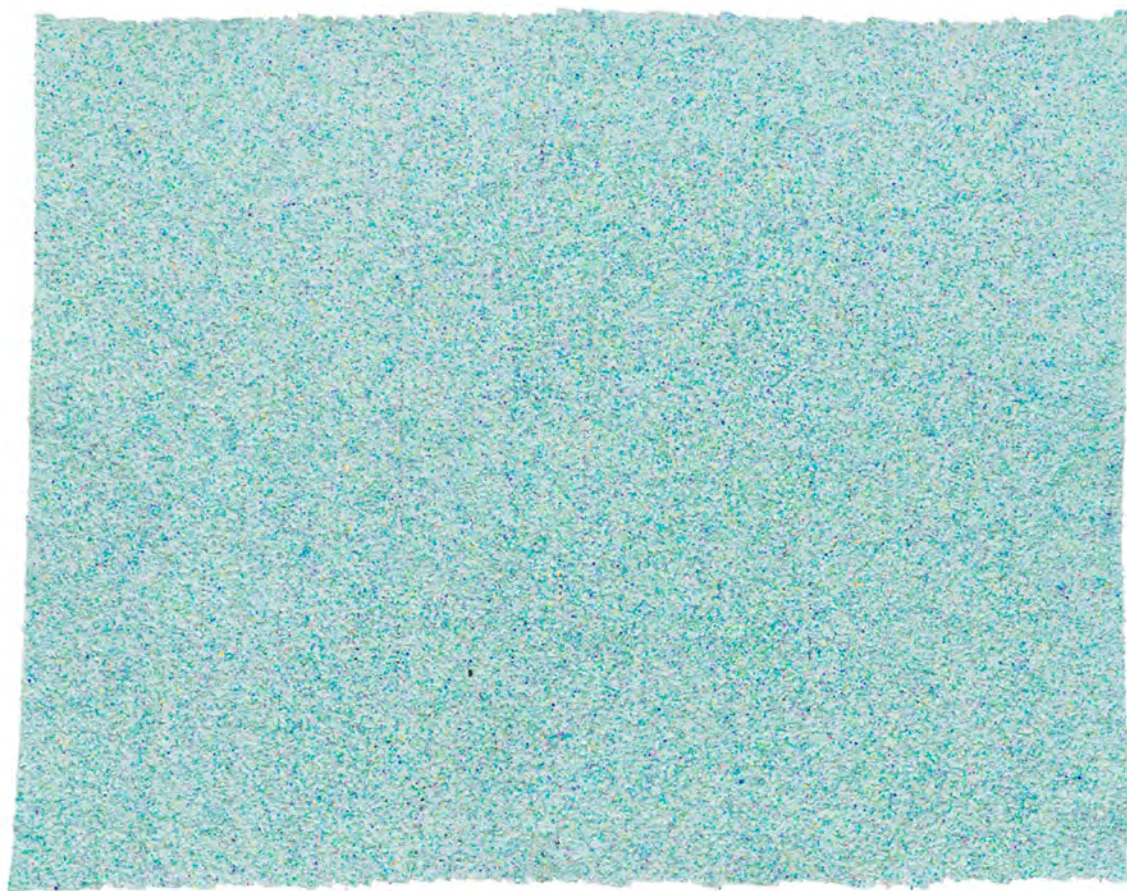
34.3 x 33 cm

Signed and dated, verso

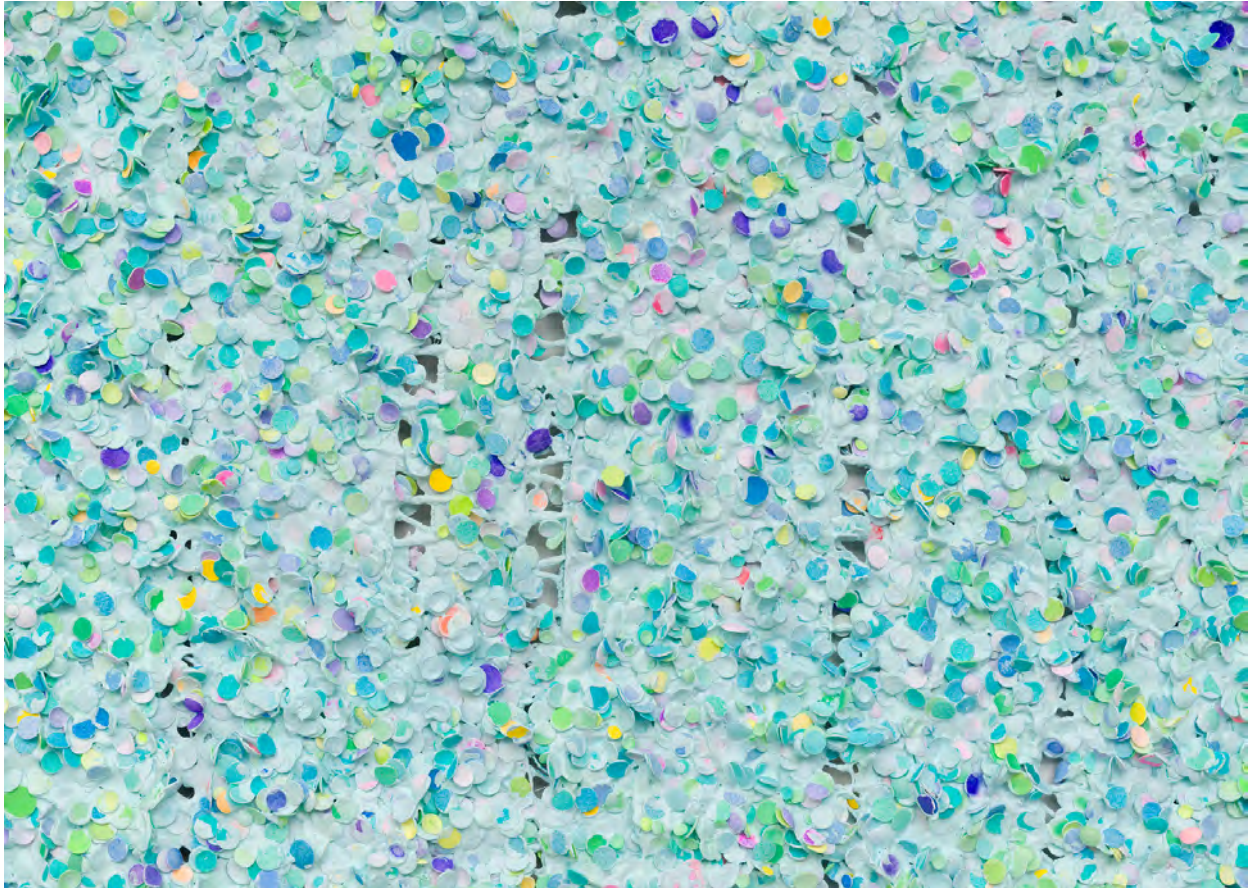
EP_2022_HP062

(Inv# PINPP964)

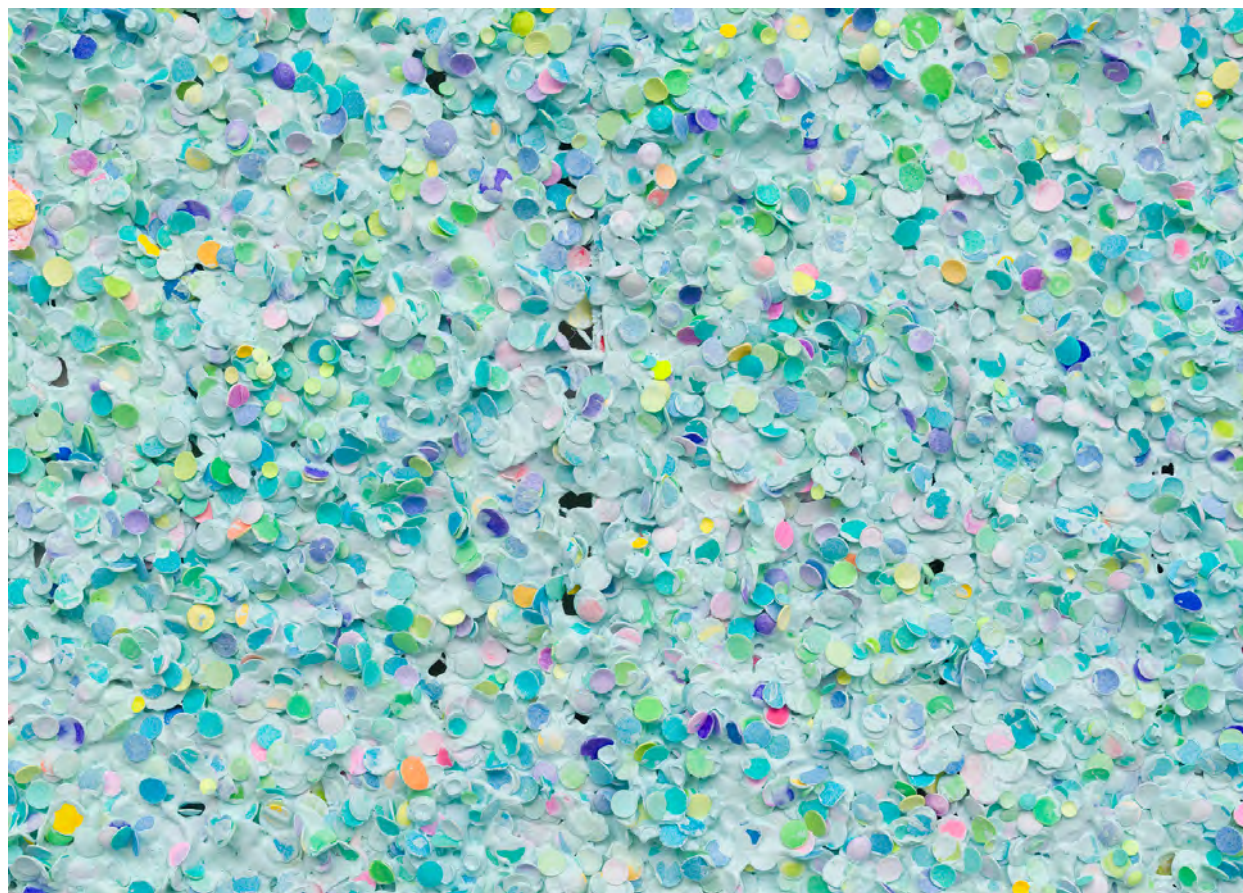
\$25,000



Howardena Pindell (1943–)
Untitled #23 (Bermuda), 2023
Mixed media on canvas
81 x 101 1/2 inches
205.7 x 257.8 cm
Signed and dated, verso
(Inv# PINPT333)
\$875,000



Howardena Pindell (1943–)
Untitled #23 (Bermuda), 2023
Mixed media on canvas
81 x 101 1/2 inches
205.7 x 257.8 cm
Signed and dated, verso
(Inv# PINPT333)
\$875,000



Howardena Pindell (1943–)
Untitled #23 (Bermuda), 2023
Mixed media on canvas
81 x 101 1/2 inches
205.7 x 257.8 cm
Signed and dated, verso
(Inv# PINPT333)
\$875,000



Howardena Pindell (1943–)

Untitled #67, 2022

Mixed media paper collage

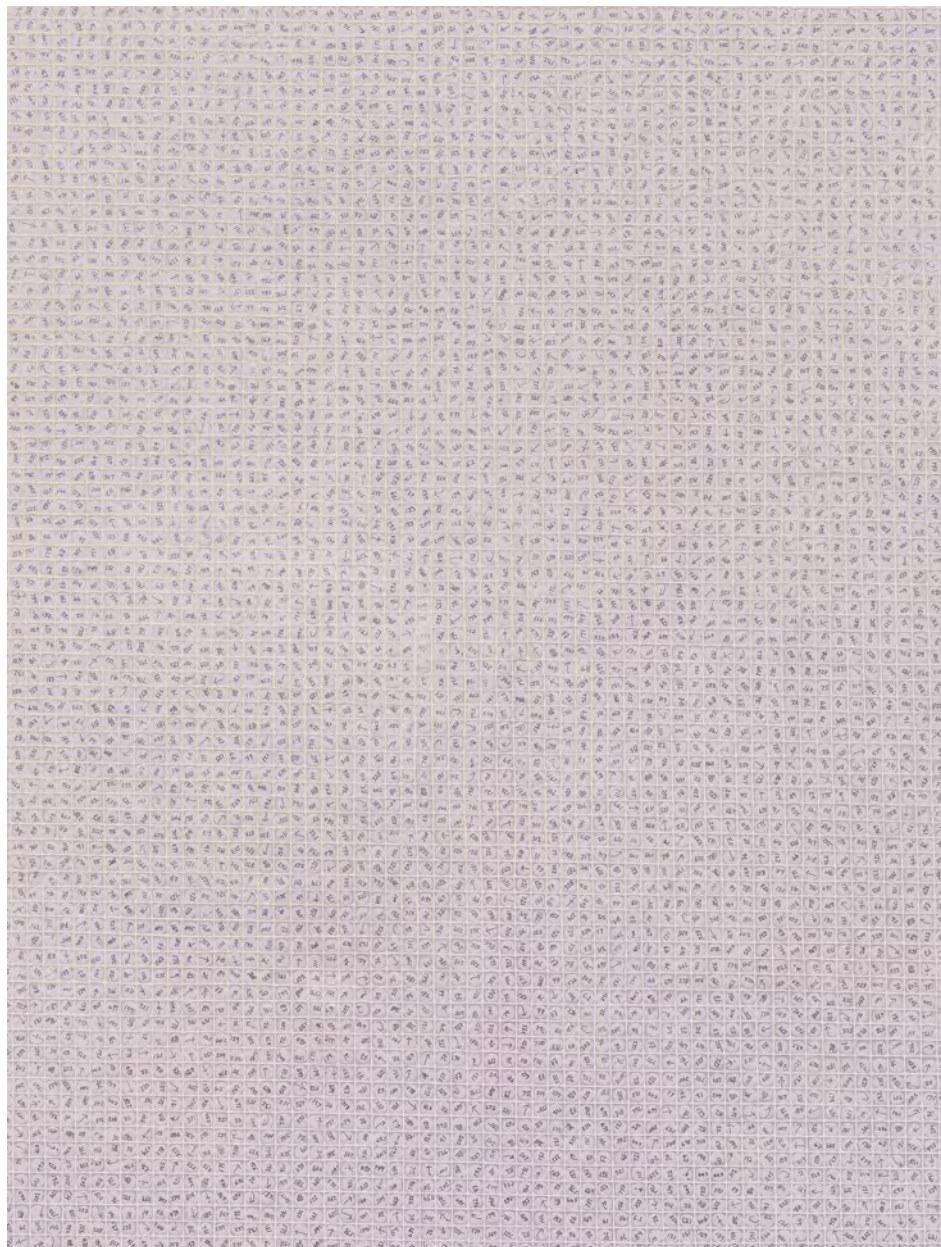
39 3/4 x 59 3/4 inches

101 x 151.8 cm

Signed and dated, verso

(Inv# PINPP1112)

\$250,000



Howardena Pindell (1943–)

Untitled #67, 2022

Mixed media paper collage

39 3/4 x 59 3/4 inches

101 x 151.8 cm

Signed and dated, verso

(Inv# PINPP1112)

\$250,000



Jaune Quick-to-See Smith

I See Red: Fry-Bread, 1995

Mixed media on canvas

80 x 36 inches

203.2 x 91.4 cm

Signed and dated, verso

(Inv# QTSP024)

\$750,000



Jaune Quick-to-See Smith

I See Red: Grandma! Grandma! (Red in the Hood), 1998

Mixed media on canvas

60 x 50 inches

152.4 x 127 cm

Signed and dated, verso

(Inv# QTSPT025)

\$750,000



Jaune Quick-to-See Smith

I See Red: Indian Wars Not Over, 1998

Mixed media on canvas

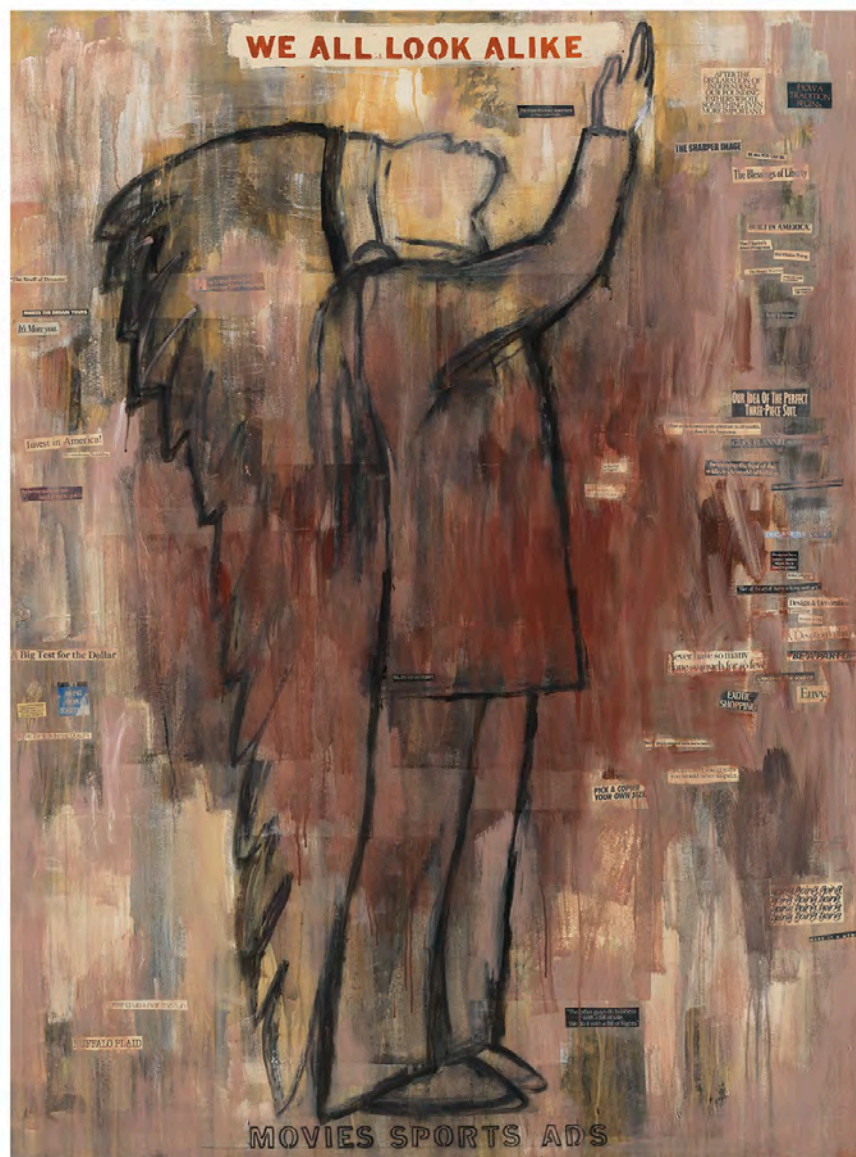
60 x 50 inches

152.4 x 127 cm

Signed and dated, verso

(Inv# QTSP072)

\$750,000



Jaune Quick-to-See Smith

I See Red: We All Look Alike, 1995

Acrylic and mixed media on canvas

80 x 60 inches

203.2 x 152.4 cm

Signed and dated, verso

(Inv# QTSP032)

\$875,000



Jaune Quick-to-See Smith
Montana Memories: Camas Prairie
Oil and wax on canvas
60 x 50 inches
152.4 x 127 cm
Signed and dated, verso
(Inv# QTSP240)
\$750,000



Jaune Quick-to-See Smith

Petroglyph Park: Sunset on the Escarpment, 1987

Oil on canvas

72 x 60 inches

182.9 x 152.4 cm

Signed and dated, verso

(Inv# QTSP223)

\$875,000



Jaune Quick-to-See Smith
Trade Canoe: Big Medicine, 2023
Mixed media
22 x 135 x 22 inches
55.9 x 342.9 x 55.9 cm
Signed and dated
(Inv# QTSSP025)
\$650,000



Jaune Quick-to-See Smith
Trade Canoe: Big Medicine, 2023
Mixed media
22 x 135 x 22 inches
55.9 x 342.9 x 55.9 cm
Signed and dated
(Inv# QTSSP025)
\$650,000



Jaune Quick-to-See Smith
Trade Canoe: Fear of Knowledge II, 2023
Mixed media
26 x 96 x 17 inches
66 x 243.8 x 43.2 cm
Signed and dated
(Inv# QTSSP028)
\$650,000



Jaune Quick-to-See Smith
Trade Canoe: Fear of Knowledge II, 2023
Mixed media
26 x 96 x 17 inches
66 x 243.8 x 43.2 cm
Signed and dated
(Inv# QTSSP028)
\$650,000



Emmi Whitehorse
Dreaming II, 1989
Mixed media on canvas
51 x 71 inches
129.5 x 180.3 cm
Signed and dated
(Inv# WHIPT073)
\$150,000



Emmi Whitehorse
Planting Field, 1993
Mixed media on canvas
39 x 28 inches
99.1 x 71.1 cm
Signed and dated
(Inv# WHIPT074)
\$75,000



Emmi Whitehorse

Rincon Marquez, 1987

Mixed media on canvas

39 x 30 inches

99.1 x 76.2 cm

Signed and dated

(Inv# WHIPT070)

\$75,000



Emmi Whitehorse

Twins, 1989

Mixed media on canvas

60 x 98 inches

152.4 x 243.8 cm

Signed and dated

(Inv# WHIPT071)

\$200,000

SOLD



Emmi Whitehorse

Underfloor, 1994

Mixed media on canvas

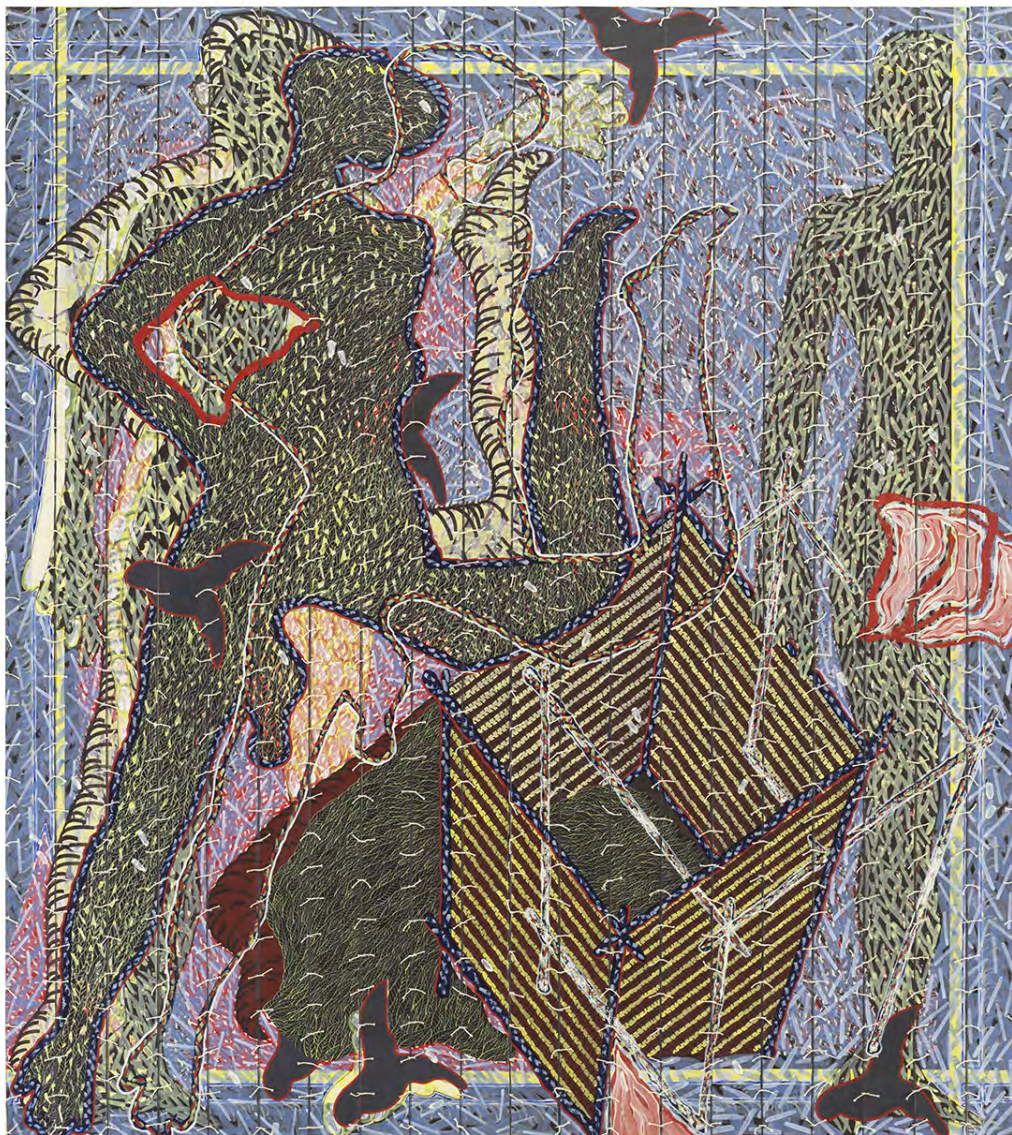
39 x 51 inches

99.1 x 129.5 cm

Signed and dated

(Inv# WHIPT075)

\$95,000



Franklin Williams

Utterly Depraved Flesh, 1976

Acrylic, paper, and crochet thread on canvas

70 x 67 inches

177.8 x 170.2 cm

Signed and dated, verso

FW.1976.002

(Inv# WILPT007)

\$100,000



Franklin Williams

Utterly Depraved Flesh, 1976

Acrylic, paper, and crochet thread on canvas

70 x 67 inches

177.8 x 170.2 cm

Signed and dated, verso

FW.1976.002

(Inv# WILPT007)

\$100,000



Franklin Williams

Utterly Depraved Flesh, 1976

Acrylic, paper, and crochet thread on canvas

70 x 67 inches

177.8 x 170.2 cm

Signed and dated, verso

FW.1976.002

(Inv# WILPT007)

\$100,000