

An abstract oil painting of a face, rendered with thick, expressive brushstrokes. The face is composed of warm, fleshy tones like pinks, reds, and yellows, with dark, swirling lines for the hair and features. The background is a chaotic mix of green, yellow, and red, suggesting foliage or a complex, textured environment. The overall style is highly gestural and emotional.

**INDEPENDENT**

**May 8 - 11, 2025**

**Booth 519**

**Charles Moffett**

NEW YORK



# INDEPENDENT

Spring Studios  
50 Varick Street  
New York, NY 10013

May 8-11, 2025

Thursday, May 8: 11AM – 8PM (By Invitation)

Friday, May 9: 11AM – 7PM

Saturday, May 10: 11AM – 7PM

Sunday, May 11: 11AM – 6PM

## Charles Moffett

Julia Jo  
Booth 519



Julia Jo  
*Down on One Knee*, 2025  
Oil, oil pastel, and oil stick on linen  
80 x 80 inches (203.2 x 203.2 cm)  
Framed: 81.5 x 81.5 inches (207.01 x 207.01 cm)

\$45,000.000







*New Paintings by Julia Jo,*  
presented at Independent Art Fair 2025 by Charles Moffett, Booth 519

Charles Moffett is pleased to return to Independent Art Fair with a solo presentation of new paintings by Seoul-born, Brooklyn-based artist Julia Jo. The presentation features a series of 13 new paintings, all upon Jo's signature square canvases, ranging in size from the intimate 12 x 12 inches to the all-encompassing 80 x 80 inches.

The new paintings further evolve the artist's ceaseless exploration of the emotional potentials within the oscillations between the figurative and the abstract. Taking inspiration from memories of her own interpersonal connections and misconceptions, conflicts and unions, Jo begins each painting by sketching a largely figurative composition in oil directly onto the canvas, a process the artist describes as "drawing in paint." While in previous bodies of work, Jo's compositions largely featured a multitude of exaggerated bodies immersed in heightened human relationships of all manners, this new series mostly focuses on amorous interactions between only two figures. The paintings excavate the depths of intimacy, bringing its natural undercurrents of danger, vulnerability, and rawness to the fore of the picture plane. With each new layer of oils, comprising paints, sticks, and pastels, Jo obscures, fractures, and reconstitutes the picture facing us, yet many of these works are Jo's clearest yet, with figures' outlines and gazes directly addressing the viewer.

Jo's paintings exist within a constant state of tension — tension between the figures, between abstraction and figuration, and between the colors. The palette of her new series comprises a number of unnatural groupings, one sees hues verging on neons scattered throughout, soft peach alongside brilliant turquoise, pumpkin orange near deep rose. In a challenge to herself as a painter, Jo brings her colors into a wildly abundant and expressive chorus, drawing inspirations and cues from artists ranging from George Condo to Joan Mitchell to Lisa Yuskavage.

For Jo, color as well as line, serve not only representational purposes but as vital affirmation of the work's existence as a painting. The recent incorporation of oil pastels and sticks lend themselves naturally to the calligraphic motions of the artist's hand and allow the dynamism and fluidity of her mark-making to exist throughout every layer of her compositions, not only as a sketched foundation or a surface adornment. This infuses the paintings with almost an x-ray-like nature, we can see the bones, muscles, and tissues of their construction; but, through the disruption of abstraction, forms slip easily back to their state as simply marks on a canvas, the essence of painting itself. As the marks individually and collectively collapse and build before us, crystallizing for a moment only to dissolve the next, Jo's paintings tempt us with their story but never abandon their abstract essence.

Julia Jo's (b. 1991, Seoul, South Korea; lives and works in Brooklyn, New York. MFA Parsons School of Design 2019, BFA Smith College, 2016) practice encompasses a distinctive style of oil painting that incorporates a vibrant color palette to render compositions that shift between the figurative and the abstract. Born in Seoul, Jo spent her childhood and adolescence splitting time between South Korea and the U.S.; and she draws upon a deep, personal well of moments lost in translation, social miscues and interpersonal distance to inspire her practice. Her paintings are grounded in the self-doubt, conflict, and misunderstanding that can subsume any relationship, with human forms and familiar objects dynamically rendered through careful line, color, and shadow to simultaneously reveal and conceal. Jo has been the subject of solo exhibitions at Charles Moffett, New York, NY, James Fuentes, Los Angeles, CA, and Jessica Silverman, San Francisco, CA. In the fall of 2023, she participated in the esteemed Beecher Residency in Litchfield, CT. Her work is in the permanent collections of the Smith College Museum of Art, ICA Miami, and the High Museum of Art.









Julia Jo  
*Double Take*, 2025  
Oil, oil pastel, and oil stick on linen  
80 x 80 inches (203.2 x 203.2 cm)  
Framed: 81 1/2 x 81 1/2 inches (207.01 x 207.01 cm)

\$45,000.000









Julia Jo  
*Catching Fire*, 2025  
Oil, oil pastel, and oil stick on linen  
70 x 70 inches (177.8 x 177.8 cm)  
Framed: 71 1/2 x 71 1/2 inches (181.6 x 181.6 cm)

\$40,000.000









Julia Jo  
*Honor Bound*, 2025  
Oil, oil pastel, and oil stick on linen  
60 x 60 inches (152.4 x 152.4 cm)  
Framed: 61 1/2 x 61 1/2 inches (156.21 x 156.21 cm)  
\$35,000.000









Julia Jo  
*Belong*, 2024 - 2025  
Oil and oil pastel on linen  
11 7/8 x 11 7/8 inches (30.2 x 30.2 cm)  
Framed: 13 3/8 x 13 3/8 inches (33.972 x 33.972 cm)  
\$10,000.000









Julia Jo  
*Magic*, 2024 - 2025  
Oil and oil pastel on linen  
11 7/8 x 11 7/8 inches (30.2 x 30.2 cm)  
Framed: 13 3/8 x 13 3/8 inches (33.972 x 33.972 cm)  
\$10,000.000









Julia Jo  
*Linger*, 2024 - 2025  
Oil and oil pastel on linen  
11 7/8 x 11 7/8 inches (30.2 x 30.2 cm)  
Framed: 13 3/8 x 13 3/8 inches (33.972 x 33.972 cm)  
\$10,000.000









Julia Jo  
*Muse*, 2024 - 2025  
Oil and oil pastel on linen  
11 7/8 x 11 7/8 inches (30.2 x 30.2 cm)  
Framed: 13 3/8 x 13 3/8 inches (33.972 x 33.972 cm)  
\$10,000.000









Julia Jo  
*Bramble*, 2024 - 2025  
Oil and oil pastel on linen  
11 7/8 x 11 7/8 inches (30.2 x 30.2 cm)  
Framed: 13 3/8 x 13 3/8 inches (33.972 x 33.972 cm)  
\$10,000.000









Julia Jo  
*Echo*, 2024 - 2025  
Oil and oil pastel on linen  
11 7/8 x 11 7/8 inches (30.2 x 30.2 cm)  
Framed: 13 3/8 x 13 3/8 inches (33.972 x 33.972 cm)  
\$10,000.000



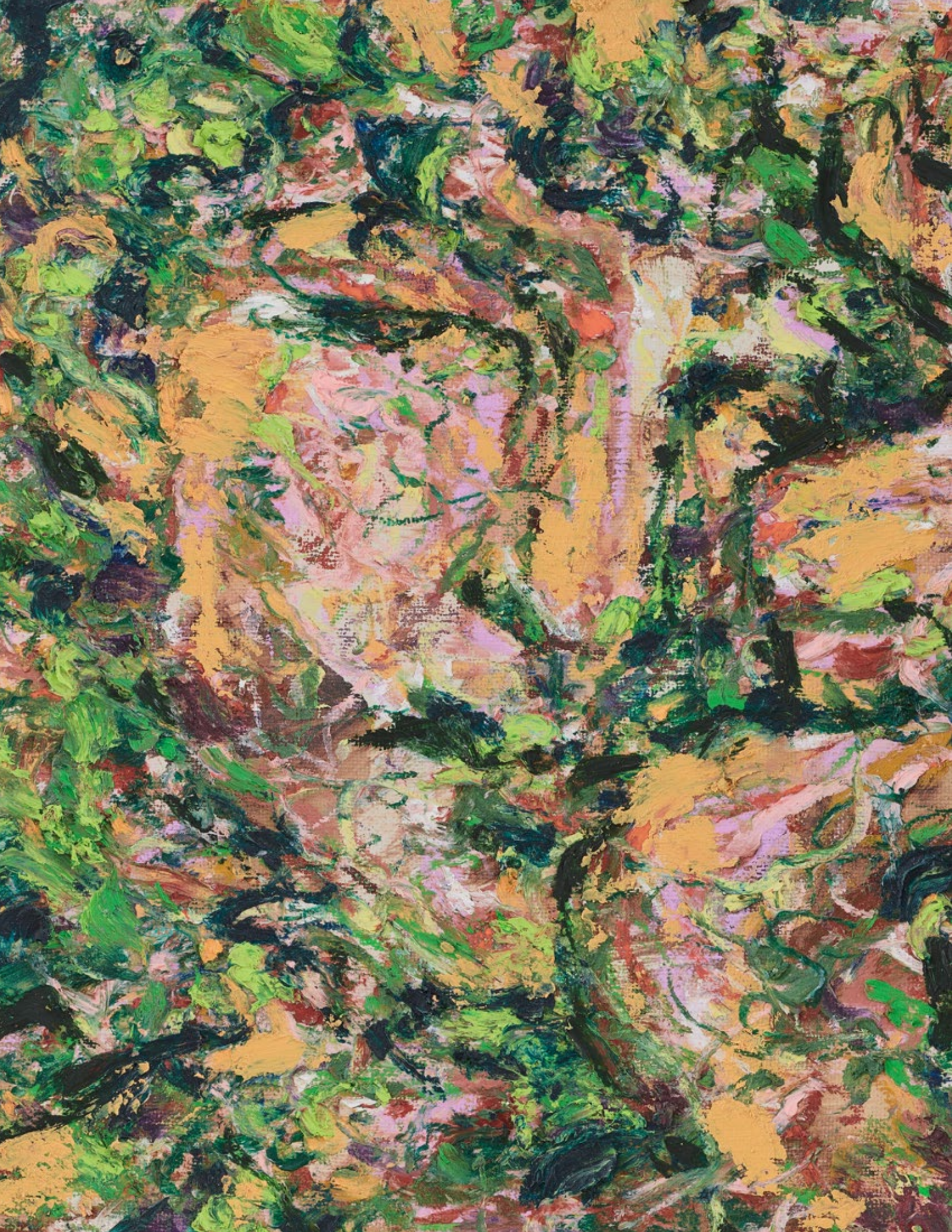






Julia Jo  
*Gentle*, 2024 - 2025  
Oil and oil pastel on linen  
11 7/8 x 11 7/8 inches (30.2 x 30.2 cm)  
Framed: 13 3/8 x 13 3/8 inches (33.972 x 33.972 cm)  
\$10,000.000









Julia Jo  
*Pride*, 2024 - 2025  
Oil and oil pastel on linen  
11 7/8 x 11 7/8 inches (30.2 x 30.2 cm)  
Framed: 13 3/8 x 13 3/8 inches (33.972 x 33.972 cm)  
\$10,000.000









Julia Jo  
*Swift*, 2024 - 2025  
Oil and oil pastel on linen  
11 7/8 x 11 7/8 inches (30.2 x 30.2 cm)  
Framed: 13 3/8 x 13 3/8 inches (33.972 x 33.972 cm)  
\$10,000.000







# Charles Moffett

394 Broadway, Floor 2  
10013 New York