



R+V

TEFAF New York
2025



TEFAF

New York 2025

Stand 307
Park Avenue Armory

VIP Preview: 8 May
General Admission: 9 – 13 May

enquire@robilantvoena.com
robilantvoena.com

ROBILANT+VOENA



TEFAF

New York 2025

Robilant+Voena returns to TEFAF New York with a presentation featuring the pioneering works of Lucio Fontana, alongside selected international icons of modern art.

The remarkable selection, including paintings, sculpture, ceramics and works on paper, offers a taste of the dynamic artistic environment in Italy following the Second World War, with the works of Lucio Fontana assuming particular prominence in the booth. A selection of his pioneering ceramic works from the 1950s and early '60s – both figurative and abstract – will be presented alongside examples of his paintings and a rare work from the *Metalli* series, made of aluminium.

Complementing the selection is an important brass sculpture by Fausto Melotti from 1961.

Among the works by international twentieth-century artists is a compelling ink drawing by Pablo Picasso showing one of his favourite muses, the American socialite Sara Murphy, sensitively rendered with just a few lines of the pen. An early painting by René Magritte exhibits the artist's consolidation of some of his most iconic motifs. A rare silkscreen painting from the *Myths* series by Andy Warhol is an impressive culmination of the booth, one of the few examples of its kind that features all ten of the figures from the series in a single work.

ROBILANT+VOENA



LUCIO FONTANA

Rosario de Santa Fé 1899–1968 Comabbio

Madonna and Child, 1954–55

Signed 'fontana' (lower centre-right)

Painted and glazed terracotta

42 x 30 x 7 cm (16½ x 11¾ x 2¾ in.)





LUCIO FONTANA
 Rosario de Santa Fé 1899–1968 Comabbio
Concetto Spaziale (Spatial Concept), 1957
 Signed and dated 'l. fontana 57' (on the upper rim)
 Painted terracotta
 33 x 19.5 x 19.5 cm (13 x 7 $\frac{7}{8}$ x 7 $\frac{7}{8}$ in.)



LUCIO FONTANA
 Rosario de Santa Fé 1899–1968 Comabbio
Concetto Spaziale (Spatial Concept), 1962–63
 Inscribed 'l. fontana' (lower right)
 Accompanied by a certificate from the Fondazione Lucio Fontana, no. 3983/1
 Painted terracotta and graffiti
 Diameter: 49.7 cm (19 $\frac{7}{8}$ in.)



LUCIO FONTANA

Rosario de Santa Fé 1899–1968 Comabbio

Concetto Spaziale (Spatial Concept), 1962–63

Signed 'l. fontana' (across the lower edge)

Engobed terracotta and graffiti
38 x 27 x 3 cm (15 x 10 $\frac{5}{8}$ x 1 $\frac{1}{8}$ in.)



LUCIO FONTANA

Rosario de Santa Fé 1899–1968 Comabbio

Concetto Spaziale (Spatial Concept), 1959

Signed and dated 'l. fontana / 59' (lower centre); stamped with the symbol 'ALBISOLA' (on the reverse)

Glazed and painted terracotta
Diameter: 48.5 cm (19 $\frac{1}{8}$ in.)



LUCIO FONTANA

Rosario de Santa Fé 1899–1968 Comabbio

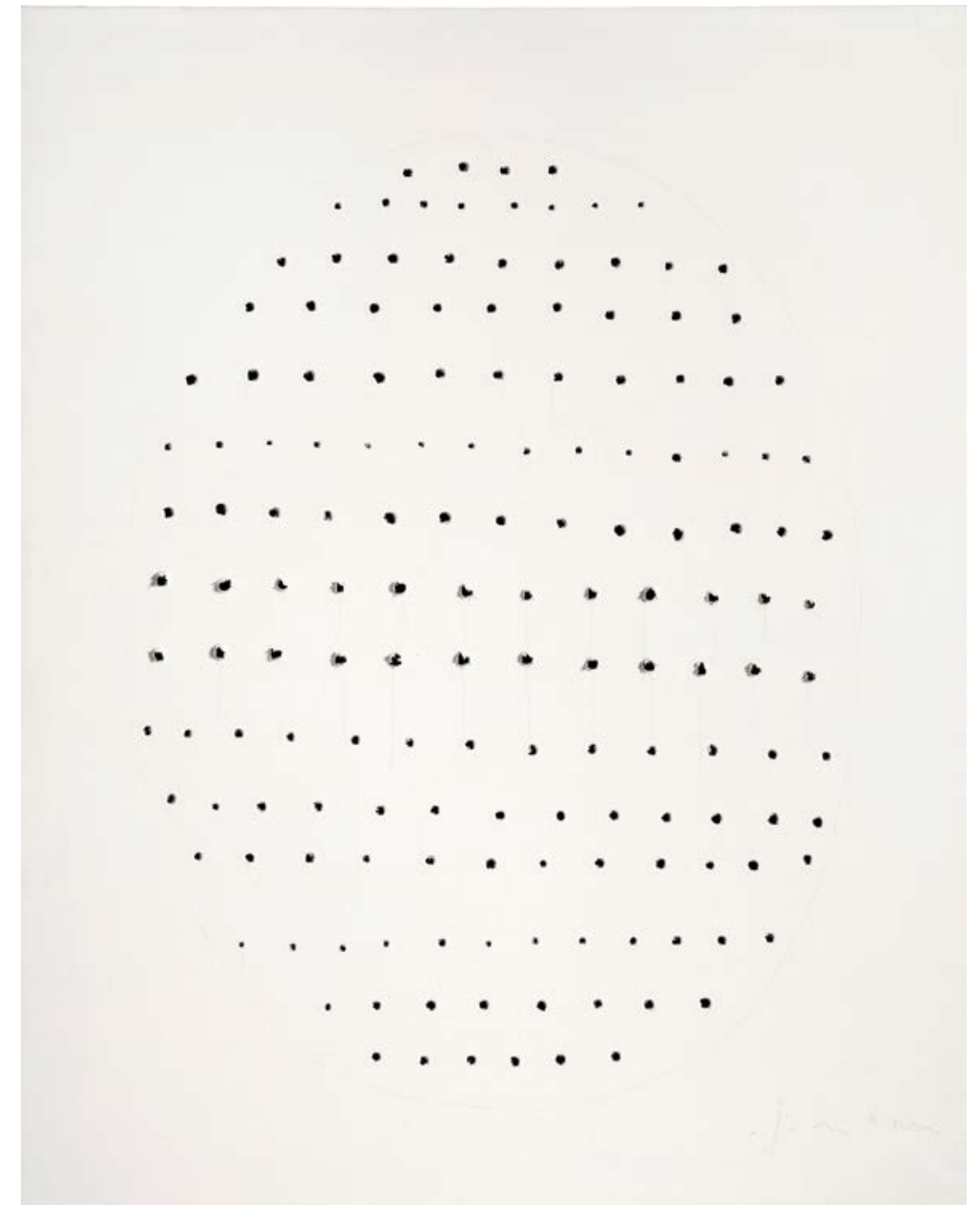
Concetto Spaziale (Spatial Concept), 1962

Signed 'l. fontana' (bottom right); signed and titled 'L. Fontana / Concetto Spaziale' (on the reverse)

Registered at the Fondazione Lucio Fontana, no. 179/1

Oil and graffiti on canvas

93 x 120 cm (36 $\frac{3}{8}$ x 47 $\frac{1}{4}$ in.)



LUCIO FONTANA

Rosario de Santa Fé 1899–1968 Comabbio

Concetto Spaziale (Spatial Concept), 1967–68

Signed 'l. Fontana' (lower right); signed, titled and inscribed 'l. Fontana / "Concetto Spaziale" / Alla Signorina Mita / l. Fontana' (on the reverse)

Water-based paint and pencil on canvas

91 x 72 cm (35 $\frac{7}{8}$ x 28 $\frac{3}{8}$ in.)



LUCIO FONTANA

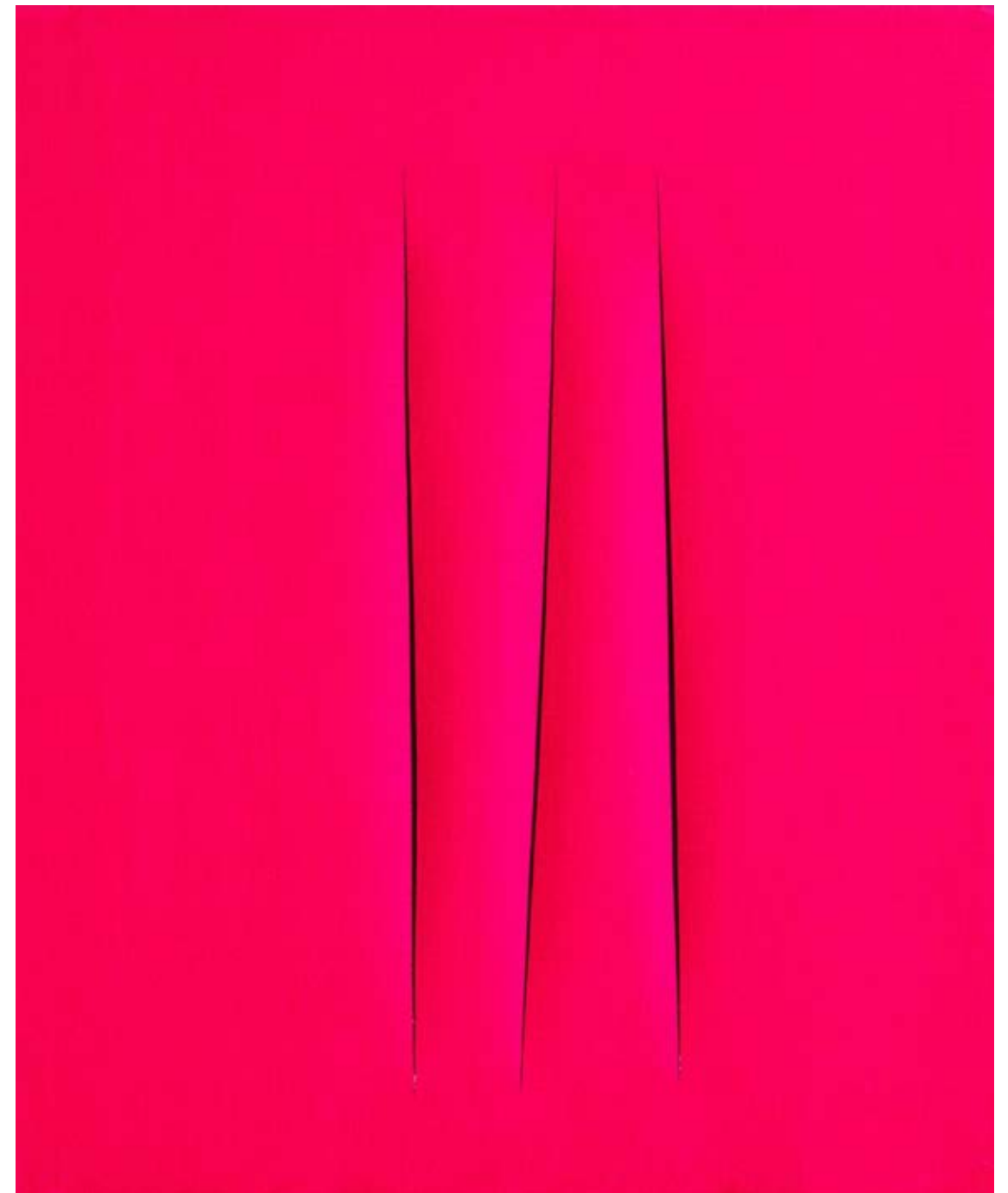
Rosario de Santa Fé 1899–1968 Comabbio

Concetto Spaziale, Attese (Spatial Concept, Waiting), 1960–61

Signed twice, titled and inscribed '1+1-887' (on the reverse)

Water-based paint on canvas

81.5 x 100.5 cm (32 $\frac{1}{8}$ x 39 $\frac{3}{8}$ in.)



LUCIO FONTANA

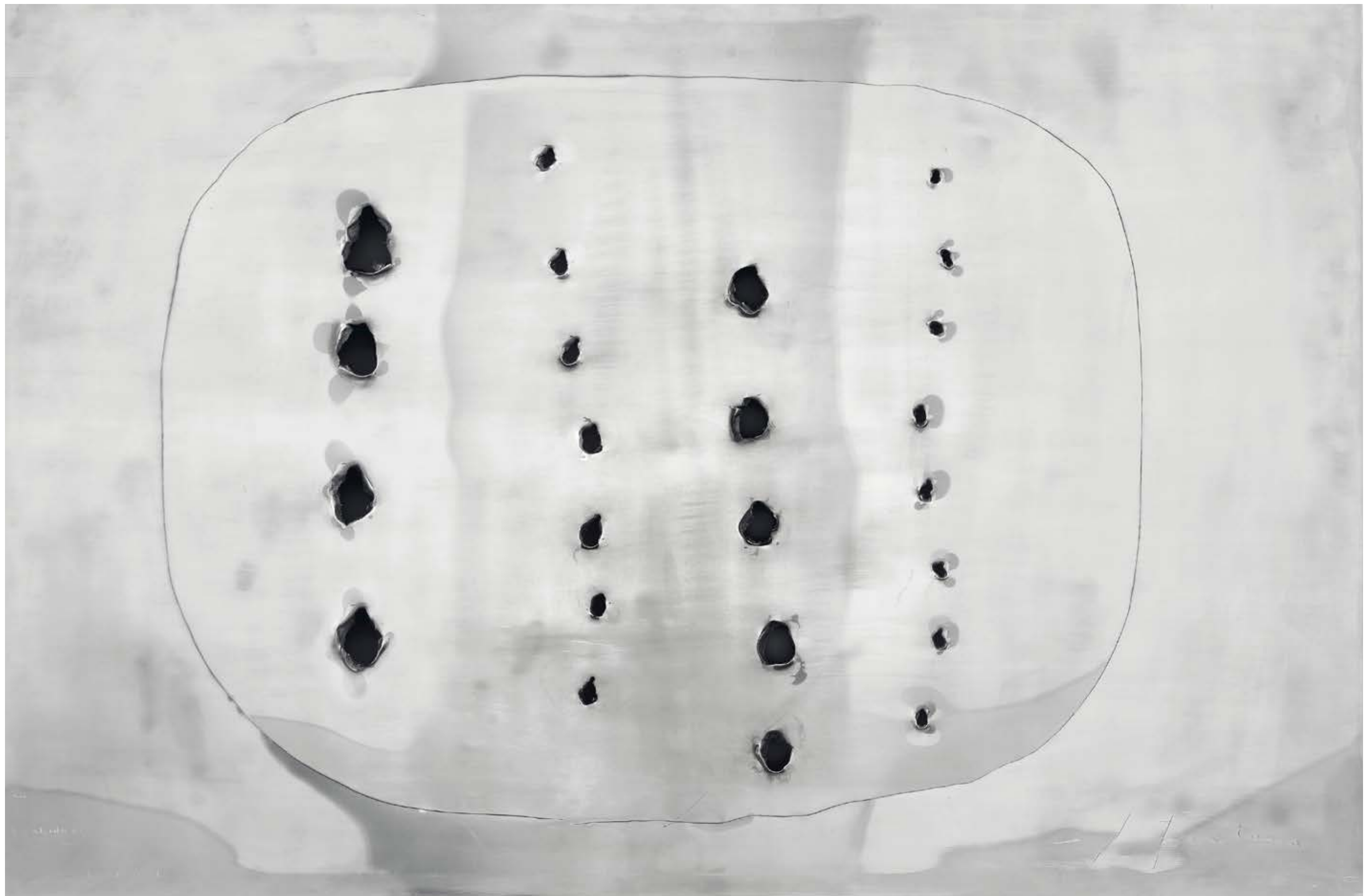
Rosario de Santa Fé 1899–1968 Comabbio

Concetto Spaziale, Attese (Spatial Concept, Waiting), 1965

Signed, titled and inscribed 'l. Fontana Concetto spaziale ATTESE debbo aspettare la Nanda che non arriva mai' (on the reverse)

Water-based paint on canvas

55.5 x 46 cm (21 $\frac{7}{8}$ x 18 $\frac{1}{8}$ in.)



LUCIO FONTANA

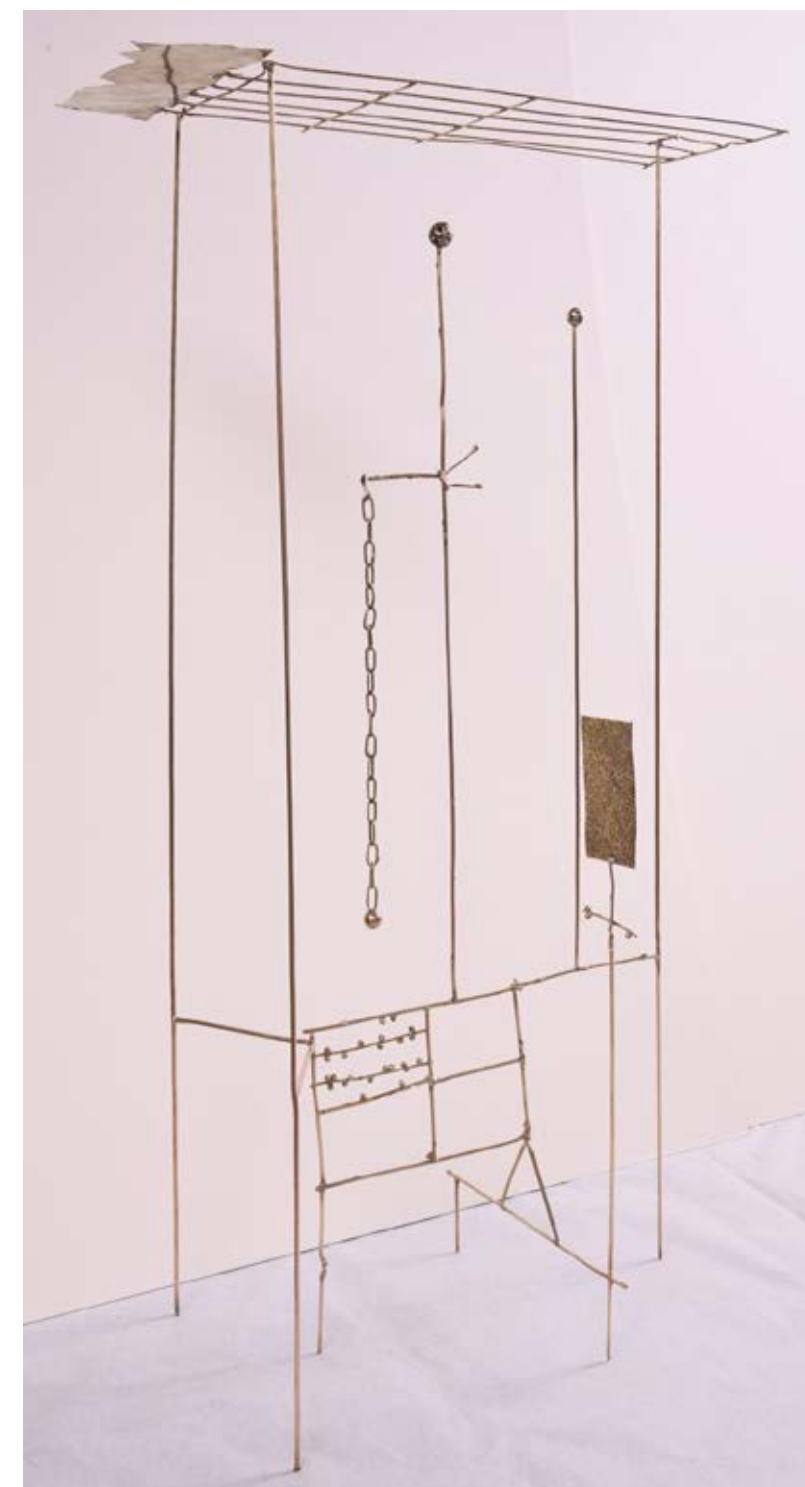
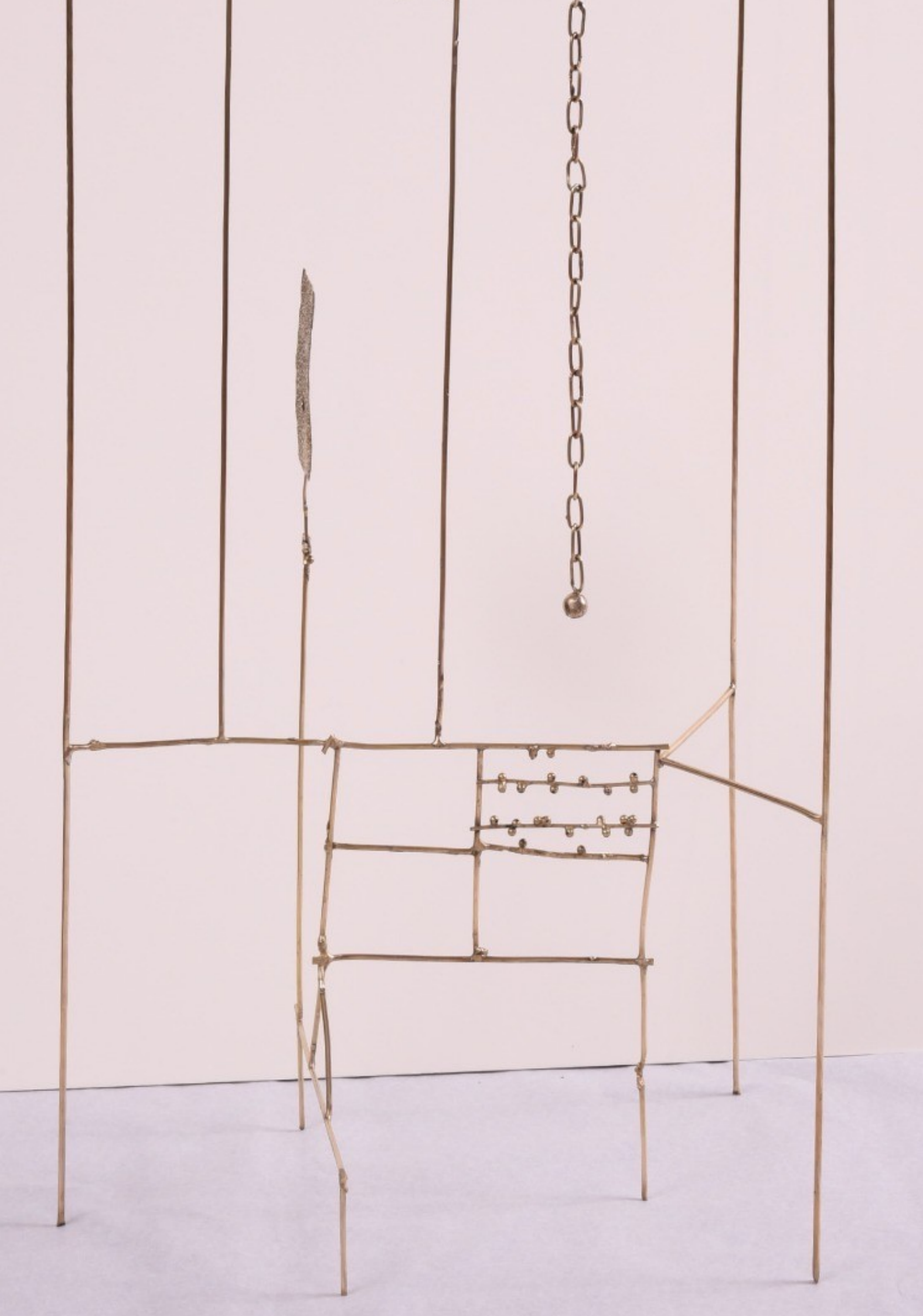
Rosario de Santa Fé 1899–1968 Comabbio

Concetto Spaziale (Spatial Concept), 1964–65

Signed 'l. Fontana' (lower right)

Aluminium with gashes, holes and graffito

65 x 98 cm (25½ x 38¾ in.)



FAUSTO MELOTTI
Rovereto 1901–1986 Milan

La spiaggia, 1961

Brass
88 x 52 x 21 cm (34 $\frac{5}{8}$ x 20 $\frac{1}{2}$ x 8 $\frac{1}{4}$ in.)



RENÉ MAGRITTE

Lessines 1898–1967 Schaerbeek

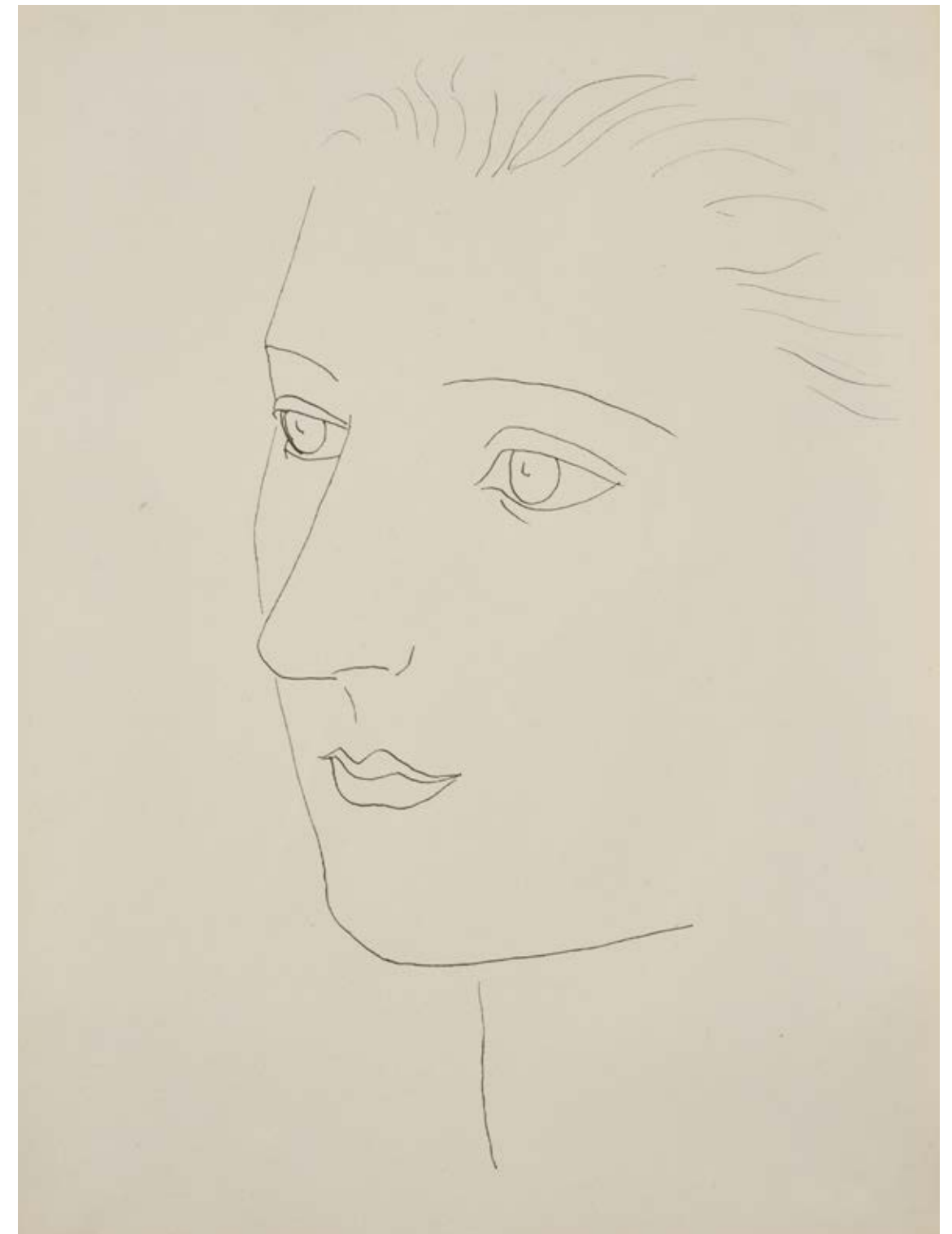
Le palais désert (The Deserted Palace), 1928

Signed 'magritte' (lower right); signed and titled 'LE PALAIS DÉSERT / MAGRITTE' (on the reverse)

Oil on canvas

38.2 x 55 cm (15 x 21 5/8 in.)

Framed: 56.4 x 73.4 cm



PABLO PICASSO

Málaga 1881–1973 Mougins

Head of a Woman (Sara Murphy), 1923

Indian ink on paper

36.5 x 26.5 cm (14 3/8 x 10 3/8 in.)

With frame: 77 x 69.5 cm (30 1/4 x 27 3/8 in.)

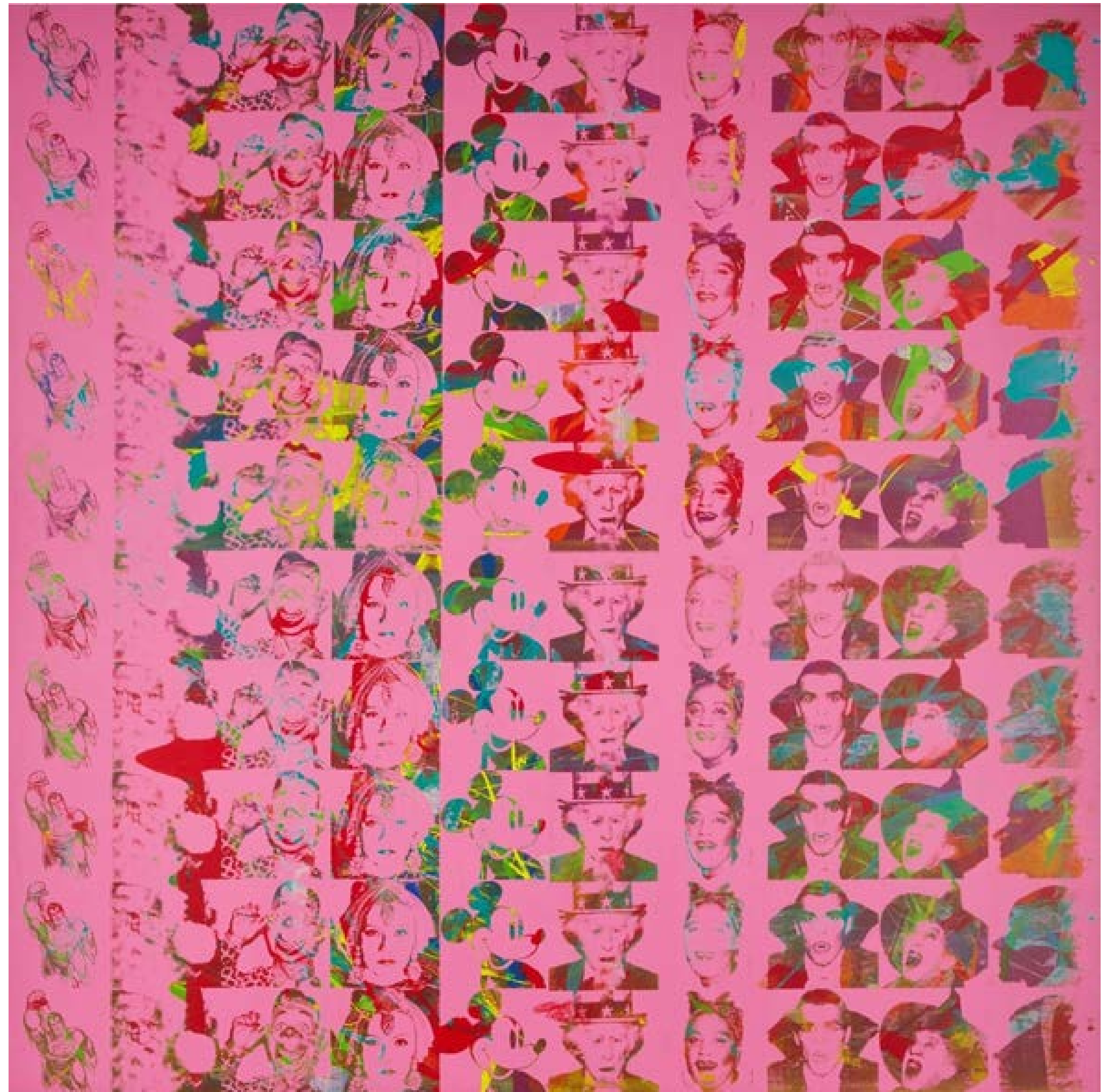
ANDY WARHOL

Pittsburgh 1928–1987 New York

Myths (Multiple), 1981

Signed and dated '1981' (on the overlap);
stamped by The Andy Warhol Art Authentication Board and
numbered 'PA51.015' (on the overlap)

Acrylic and silkscreen ink on canvas
254 x 254 cm (100 x 100 in.)





Lucio Fontana
Madonna and Child,
1954-55



Lucio Fontana
Concetto Spaziale
(*Spatial Concept*),
1957



Lucio Fontana
Concetto Spaziale
(*Spatial Concept*),
1962-63



Lucio Fontana
Concetto Spaziale
(*Spatial Concept*),
1962-63



Lucio Fontana
Concetto Spaziale
(*Spatial Concept*),
1959



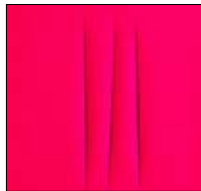
Lucio Fontana
Concetto Spaziale
(*Spatial Concept*),
1962



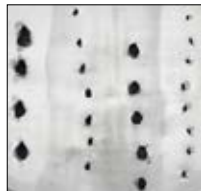
Lucio Fontana
Concetto Spaziale
(*Spatial Concept*),
1967-68



Lucio Fontana
Concetto Spaziale,
Attese (Spatial Concept, Waiting),
1960-61



Lucio Fontana
Concetto Spaziale,
Attese (Spatial Concept, Waiting),
1965



Lucio Fontana
Concetto Spaziale
(*Spatial Concept*),
1964-65



Fausto Melotti
La spiaggia,
1961



René Magritte
Le palais désert
(*The Deserted Palace*), 1928



Pablo Picasso
Head of a Woman
(*Sara Murphy*),
1923



Andy Warhol
Myths (Multiple),
1981

TEFAF

New York 2025

Stand 307

Park Avenue Armory

VIP Preview: 8 May

General Admission: 9 – 13 May

enquire@robilantvoena.com
robilantvoena.com

ROBILANT+VOENA