



TEFAF
NEW YORK

May 15 –19, 2026
Booth 203 | Moose Room

HOSTLER | BURROWS



EGEVÆRK (Mette Bentzen, Danish, b. 1978 and Lasse Kristensen, Danish, b. 1985)

Galaxy No. 2, 2025

Fumed oak, silver leaf, LEDs

From left to right: 59" Dia.; 39.5" Dia.; 47.25" Dia.





DAVID BLOMBERG (Swedish, 1864–1962)
Pair of Armchairs, Sweden, 1935
Walnut, new upholstery
41" H x 28" W x 26" D; 23.5" D (seat)





ERLING VIKSJØ (Norwegian, 1910-1971)
Conglo Table, Norway, ca. 1970
Quartz, concrete, rosewood
16.5" H x 29.75" W x 27.75" D





OSCAR NILSSON (Swedish, 1895–1975)
Sofa for Bodafors, Sweden, ca. 1935
Bolivian rosewood, new upholstery
29" H x 83" W x 31" D; 21" D (seat)



WILHELM KÅGE (Swedish, 1889-1960)
Collection of Farsta Studio Vases and Lidded Box,
Gustavsberg, Sweden, ca. 1950s
Glazed stoneware
Dimensions on following page





Top: 9.25" H x 3.25" Dia.;
Bottom: 5" H x 5"W x 3.5" D

Top: 9.5" H x 4" Dia.;
Bottom: 4" H x 4.25" Dia.

WILHELM KÅGE (Swedish, 1889-1960)
Collection of Farsta Studio Vases and Lidded Box,
Gustavsberg, Sweden, ca. 1950s
Glazed stoneware
9" H x 4" Dia.



WILHELM KÅGE (Swedish, 1889-1960)
 Collection of Farsta Studio Vases and Lidded Box,
 Gustavsberg, Sweden, ca. 1950s
 Glazed stoneware
 7.5" H x 5" Dia.



Top: 4" H x 3" Dia.
 Bottom: 7.25" H x 2.75" Dia.



Top: 6" H x 3" Dia.
 Bottom: 10.5" H x 3.75" Dia.



From Left to Right:

GAL GAON (Israeli, b.1967)

Sequoia Table, 2026

Light oak

28.5" H x 48"W x 9' L

EVA ZETHRAEUS (Swedish, b. 1971)

Indigo Calliandra, 2020

Glazed porcelain, platinum

19" H x 15" Dia.

BERNDT FRIBERG (Swedish, 1899-1981)

Studio Vase, Gustavsberg, Sweden, ca. 1955

Porcelain, "hare's fur" glaze

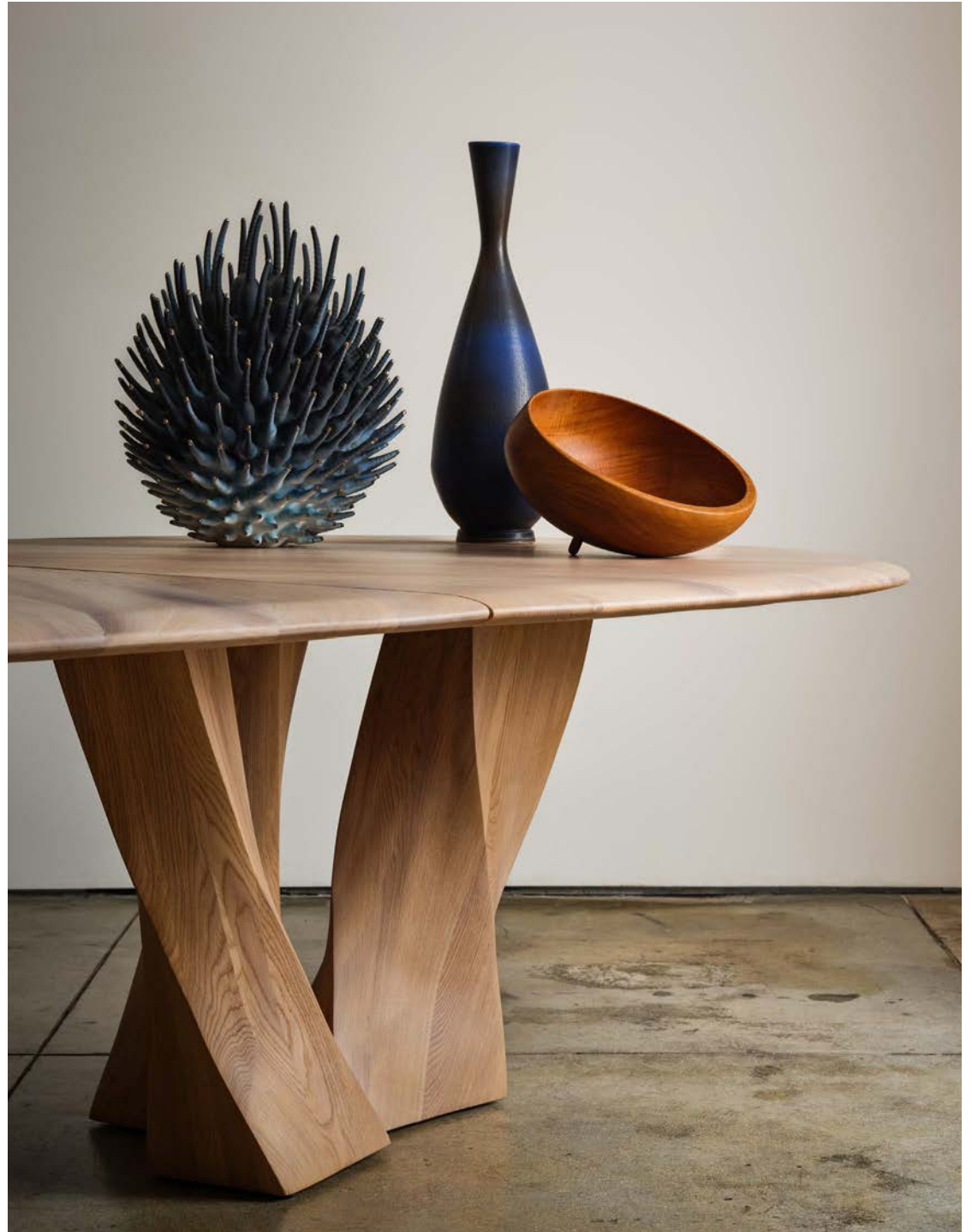
FINN JUHL (Danish, 1912-1989)

Hand-Turned Wooden Bowl, Kay Bojesen,

Denmark, ca. 1950s

Teak

9" H x 13.75"W x 12" D



TEFAF



GAL GAON (Israeli, b.1967)

Sequoia Table, 2026

Light oak

28.5" H x 48" W x 9' L





EVA ZETHRAEUS (Swedish, b. 1971)
Indigo Calliandra, 2020
Glazed porcelain, platinum
19" H x 15" Dia.





FINN JUHL (Danish, 1912-1989)
Hand-Turned Wooden Bowl, Kay Bojesen,
Denmark, ca. 1950s
Teak
9" H x 13.75"W x 12" D



BERNDT FRIBERG (Swedish, 1899-1981)
Collection of Studio Vases for Gustavsberg,
Sweden, ca. 1955
Porcelain, "hare's fur" glaze





JOSEF FRANK (Austrian, 1885–1967)
Credenza, Svenskt Tenn, Sweden, ca. 1950
Mahogany, brass handles
31.75" H x 86.5" W x 23.75" D





SHAWN HENDERSON x RUPP STUDIO (United States)
Pair of NM.02 Table Lamps, Pyrion Collection, 2026
Honed Nero Marquina marble, woven horsehair shade
27" H x 15" W x 14" D (with shade);
21.5" H x 10" W x 8.5" D (base)





HANS HEDBERG (Swedish, 1917-2007)
Red Platter with Fish, Biot, France, ca. 1970
Glazed stoneware
12.25" H x 26" W x 1.75" D





SVENSKT TENN
Dragon Lamp, Svenskt Tenn, Sweden, ca. 1930s
Pewter, paper shade





STANLEY BOXER (American, 1926–2000)
Collection of Wooden Maquettes, ca. 1960s
Mixed woods
Dimensions vary: 6" - 11.75" H



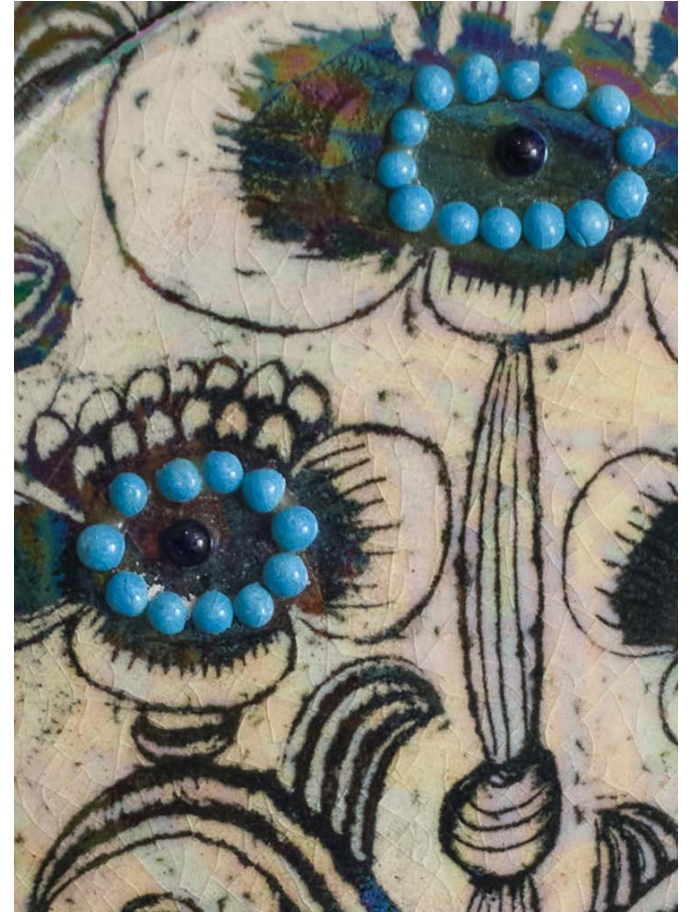
BIRGER KAIPIAINEN (Finnish, 1915-1988)
Ceramic Plate for Arabia Studio, Finland, ca. 1960s
Glazed stoneware, glass beads
15.5" Dia. x 2.5" D





BIRGER KAIPIAINEN (Finnish, 1915-1988)
Ceramic Wall Platter, Arabia Studios, Finland, ca. 1970
Glazed stoneware
16.75" H x 17.5" W x 1.75" D





BIRGER KAIPIAINEN
Ceramic Plate for Arabia Studio, Finland, ca. 1960s
Glazed stoneware, glass beads
8" Dia. x 1.25" D



OTTO SCHULZ (German, 1882-1970)
Pair of Armchairs, BOET, Sweden, ca. 1940
New upholstery

STANLEY BOXER (American, 1926–2000)

Grouping of Marble Sculptures

Cheshire gray marble and gray marble on wooden stands

Dimensions on following page





STANLEY BOXER (American, 1926–2000)

Untitled, ca. 1970
Gray marble
15" H x 12.5" W x 10.5" D

Blick, 1996
Cheshire gray marble
12" H x 15" W x 6" D

Untitled, 1971
Gray marble
12" H x 7" W x 7" D



CAMILLA ILIEFSKI (Swedish, b. 1970)
Early Flowering, 2025
Hand-tufted tapestry in wool and linen
74" H x 56" W





Yuki Ferdinandsen (Japanese, b. 1958)

Silver Sculptures, 2026
Hand-hammered silver
Dimensions Vary: 10.25" - 15.75" H



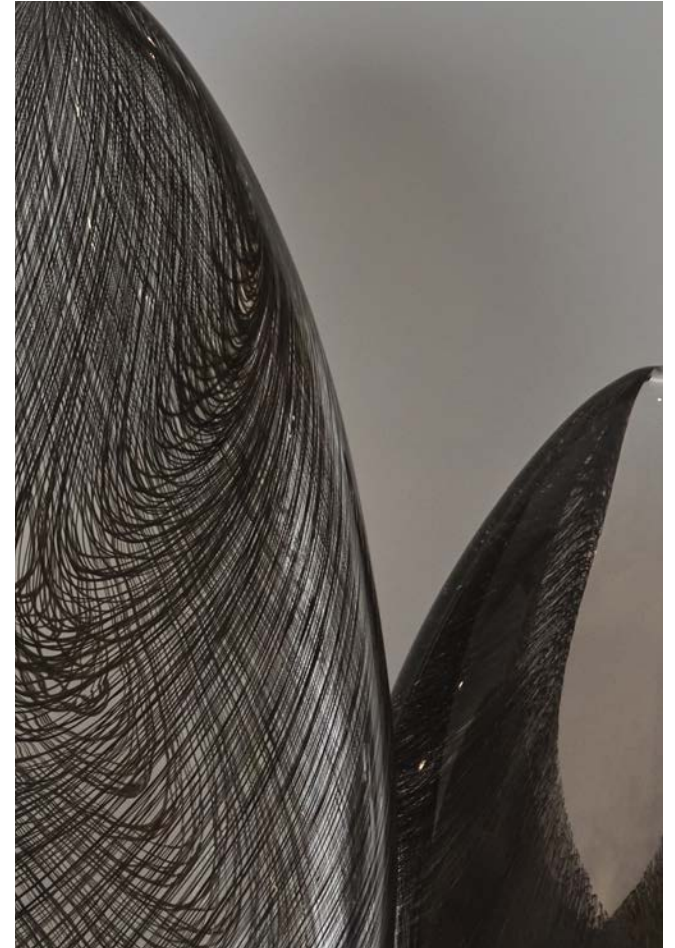
ASTRID KROGH (Danish, b. 1968)

Alpha & Omega, 2026

Seaweed, aluminum mirror foil, acrylic, pigment

43.25" H x 43.25" W





TOBIAS MØHL (Danish, b. 1970)
Black Net Collection, 2025
Blown glass with canework, LED light box
37.5" H x 58.25" W x 10" D



KIM SIMONSSON (Finnish, b. 1974)
Fabric Maker, 2025
Glazed stoneware
17.75" H x 11.75" W x 11.75" D





JENNY NORDBERG (Swedish, b. 1978)
3 to 5 Seconds Mirror Installation, 2026
Glass with liquid silver; 8 mirrors
102" H x 156" W (overall); 51" H x 39" W each

KARI DYRDAL (Norwegian, b. 1952)
Water of Life, 2026
Mixed fibers, digital weaving
117.5" L x 66" W





KARI DYRDAL (Norwegian, b. 1952)
Water of Life, 2026
Mixed fibers, digital weaving
117.5" L x 66"W



HOSTLER | BURROWS

