



Schoelkopf Gallery  
Booth D21  
Art Basel | Miami Beach  
Miami Beach Convention Center  
December 6 - 10, 2023

Schoelkopf



Schoelkopf Gallery will present a selection of exceptional paintings, sculpture, and works on paper by leading American modernist artists including Milton Avery, Thomas Hart Benton, Oscar Bluemner, Elizabeth Catlett, Stuart Davis, Charles Demuth, Arthur Dove, Richard Estes, Arshile Gorky, Marsden Hartley, Felrath Hines, Hans Hofmann, Norman Lewis, John Marin, Joseph Stella, Bob Thompson, Max Weber and Andrew Wyeth.

These artists reinvented conventional genres such as landscape and still life through new lenses, developing singular modes of expression within and alongside important 20th century movements including Cubism, Abstract Expressionism, Color Field Painting, Realism, and Photorealism.

Spanning the 20th century from 1911 to 2018, Schoelkopf Gallery's curated presentation investigates the artist's experiments with new materials, methods and subject matter as they responded to rapidly evolving events and experiences.

Booth D21  
Art Basel | Miami Beach  
Miami Beach Convention Center  
December 6 - 10, 2023

Andrew Schoelkopf

Principal

[andrew@schoelkopfgallery.com](mailto:andrew@schoelkopfgallery.com)  
(914) 886-2700

Alana Ricca

Managing Director

[alana@schoelkopfgallery.com](mailto:alana@schoelkopfgallery.com)  
(203) 524-2694

Schoelkopf



**Elizabeth Catlett (1915-2012)**

*Stepping Out*, 2000

Inscribed with the artist's initials on the base: EC

Bronze

31 x 9¾ x 9¾ inches

78.7 x 24.8 x 24.8 cm

\$ 175,000







**Elizabeth Catlett (1915-2012)**

*Magic Mask*, c. 1970-80

Inscribed with the artist's initials: EC

Wood

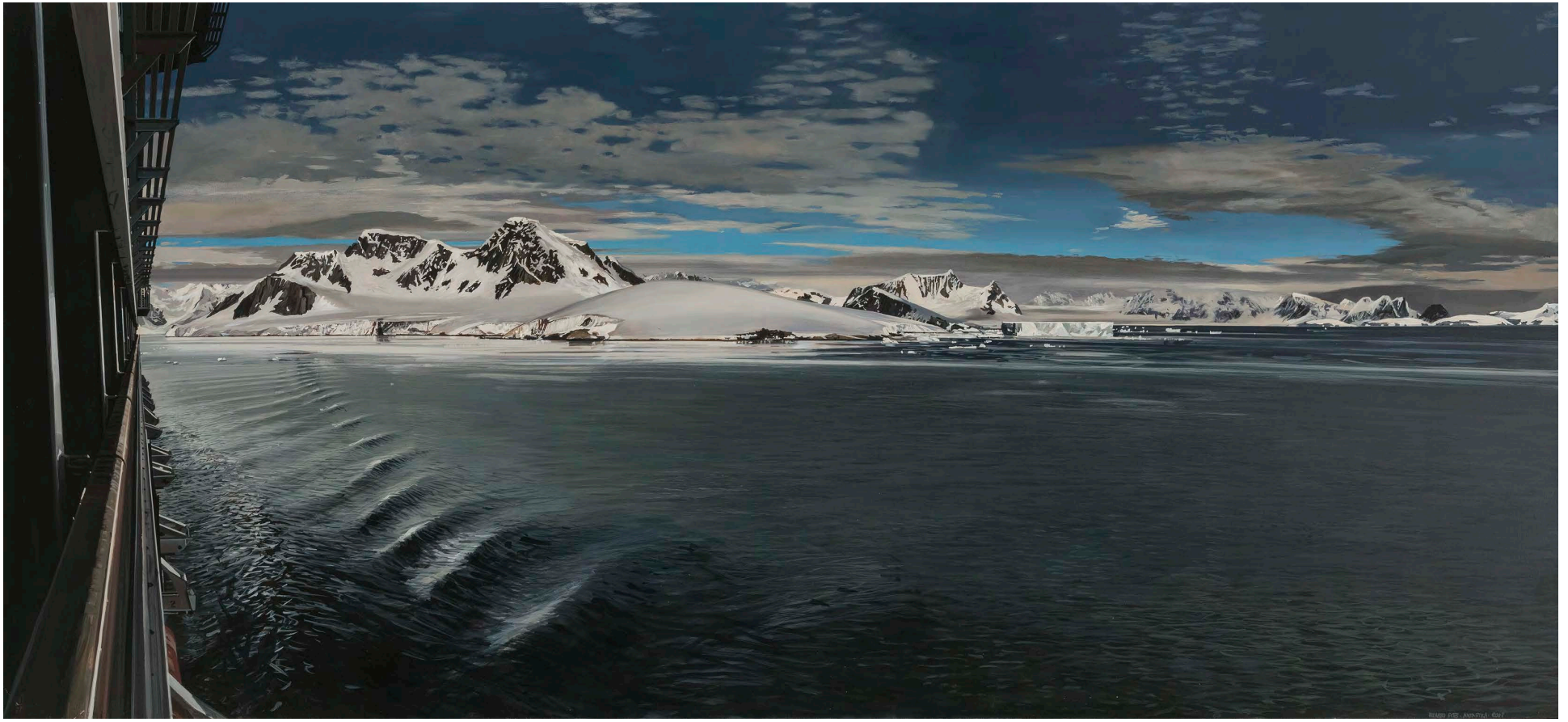
12 x 4 x 4 inches

30.5 x 10.2 x 10.2 cm

\$ 285,000







Richard Estes (b. 1932)

*Antarctica II*, 2007

Signed, inscribed, and dated at lower right: RICHARD ESTES / ANTARTICA [sic] / 2007

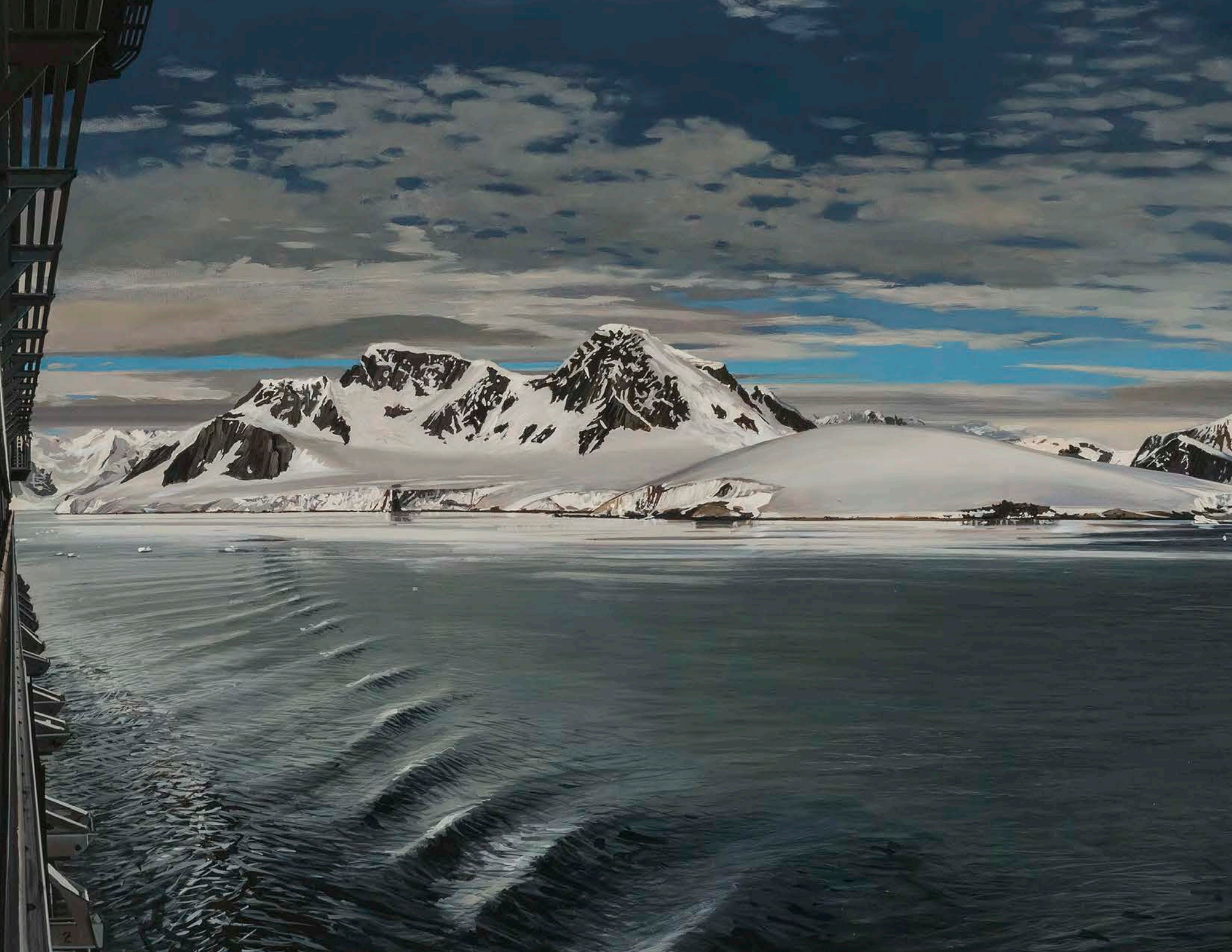
Oil on panel

26 3/8 x 57 inches

67 x 144.8 cm

\$ 450,000









Richard Estes (b. 1932)

*Crosstown Bus*, 2018

Signed at center right: RICHARD ESTES 18

Oil on panel

19 3/4 x 14 1/8 inches

50.2 x 35.9 cm

\$ 200,000











**Stuart Davis (1894-1964)**

*Egg Beater No. 4*, 1928

Signed at upper right: STUART DAVIS; signed, dated, and  
inscribed on verso: Egg Beater No. 4 / Stuart Davis / March 1928

Gouache on board

13 ¼ x 18 ⅝ inches

33.7 x 47.3 cm

\$ 1,250,000









**Stuart Davis (1894-1964)**

*Egg Beater No. 1*, 1927

Signed at lower right: STUART DAVIS; signed, dated, and inscribed  
on verso: Egg Beater #1 1927 Stuart Davis 67 - 7 Ave

Gouache on board

14 ¼ x 17 ⅞ inches

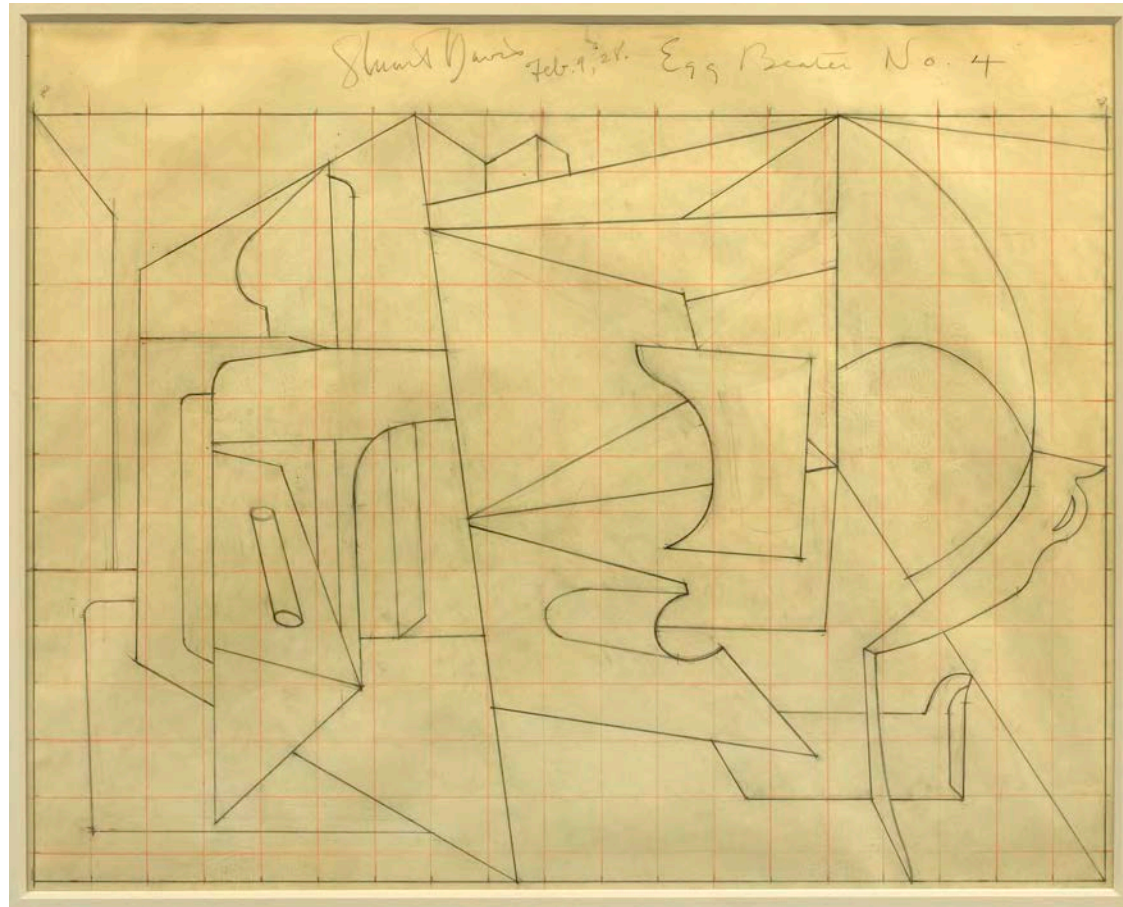
36.2 x 45.4 cm

\$ 1,250,000









**Stuart Davis (1894-1964)**

*Study for "Egg Beater No. 4", 1928*

Signed, dated, and inscribed at upper center: Stuart Davis

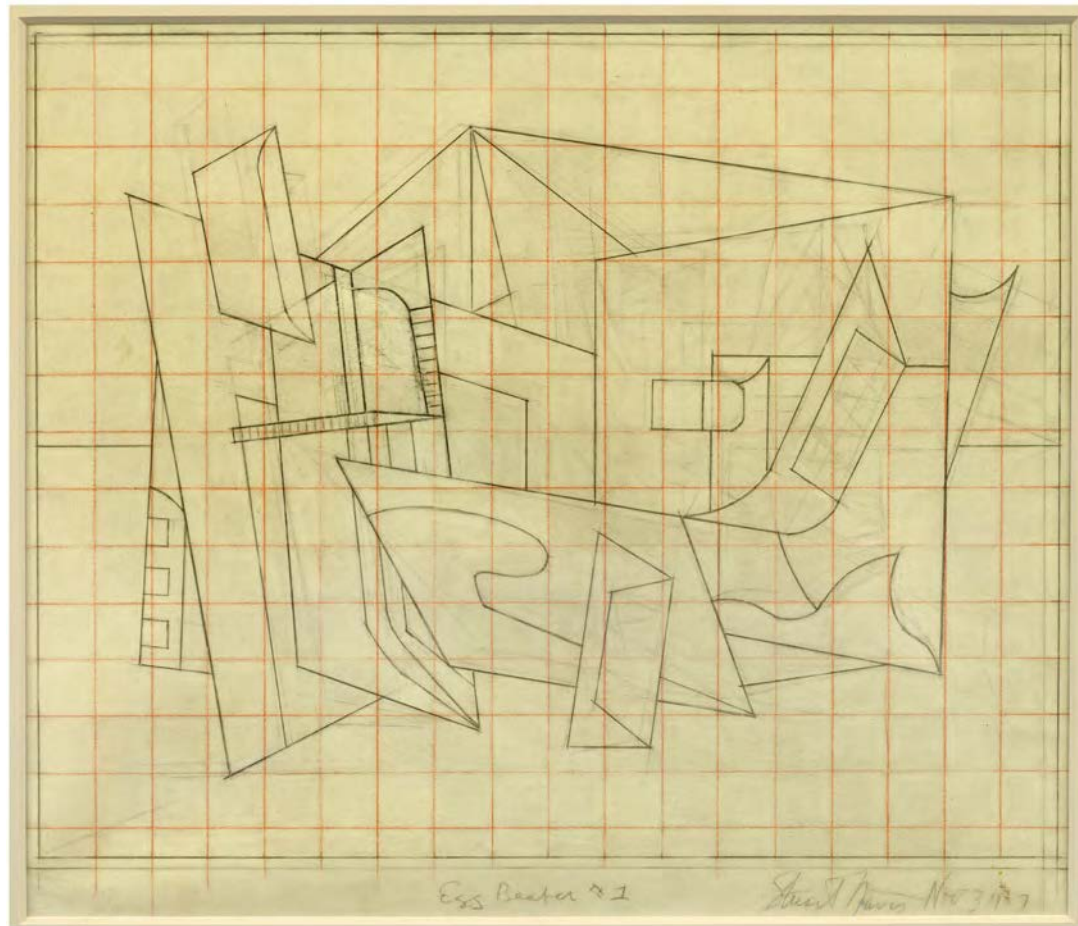
Feb. 9, 28. Egg Beater No. 4

Pencil and crayon on paper

15 ¼ x 19 ¼ inches

38.7 x 48.9 cm

\$ 300,000



**Stuart Davis (1894-1964)**

*Study for "Egg Beater No. 1", 1927*

Signed and dated at lower right: Stuart Davis Nov. 3, 1927;

inscribed at lower center: Egg Beater #1

Pencil and crayon on paper

15 ¼ x 19 ¼ inches

38.7 x 48.9 cm

\$ 300,000





**Milton Avery (1885-1965)**

*Mountain and Lake, 1962*

Signed and dated at middle right: Milton Avery 1962; Signed on  
verso: Milton Avery

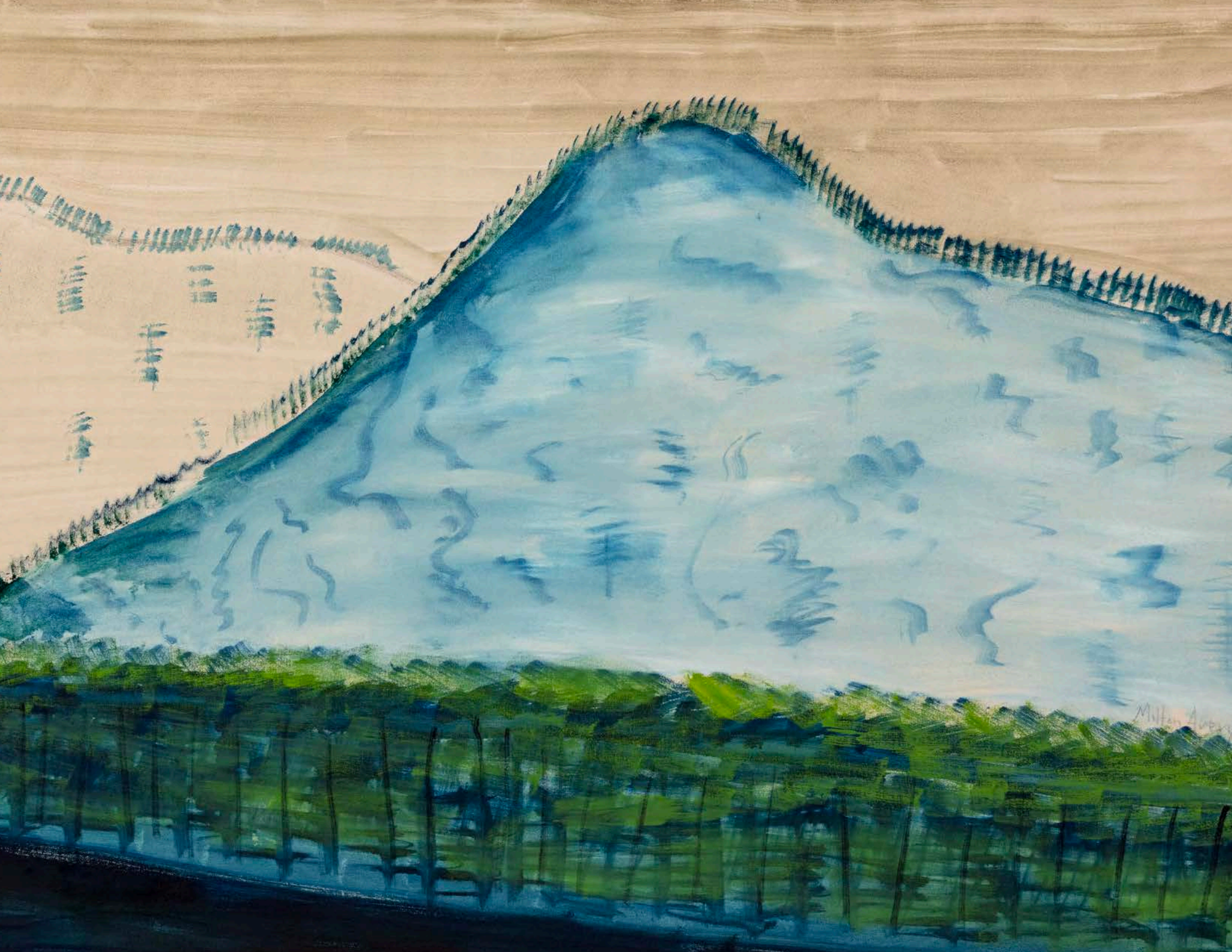
Oil on canvas

42 x 50 inches

106.7 x 127 cm

\$ 1,950,000













**Milton Avery (1885-1965)**

*Nude by the Sea, 1961*

Signed and dated at lower right: Milton Avery 1961; signed, dated and inscribed with title on the verso: *Nude by the Sea / by / Milton Avery / 28 x 22 / 1961*

Oil on canvasboard

27¾ x 22 inches

70.5 x 55.9 cm

\$ 450,000

Schoelkopf









**Oscar Bluemner (1867-1938)**

*Perth Amboy West (Tottenville)*, 1911, 1916-1917

Signed with conjoined letters at lower left: OBLÜMNER

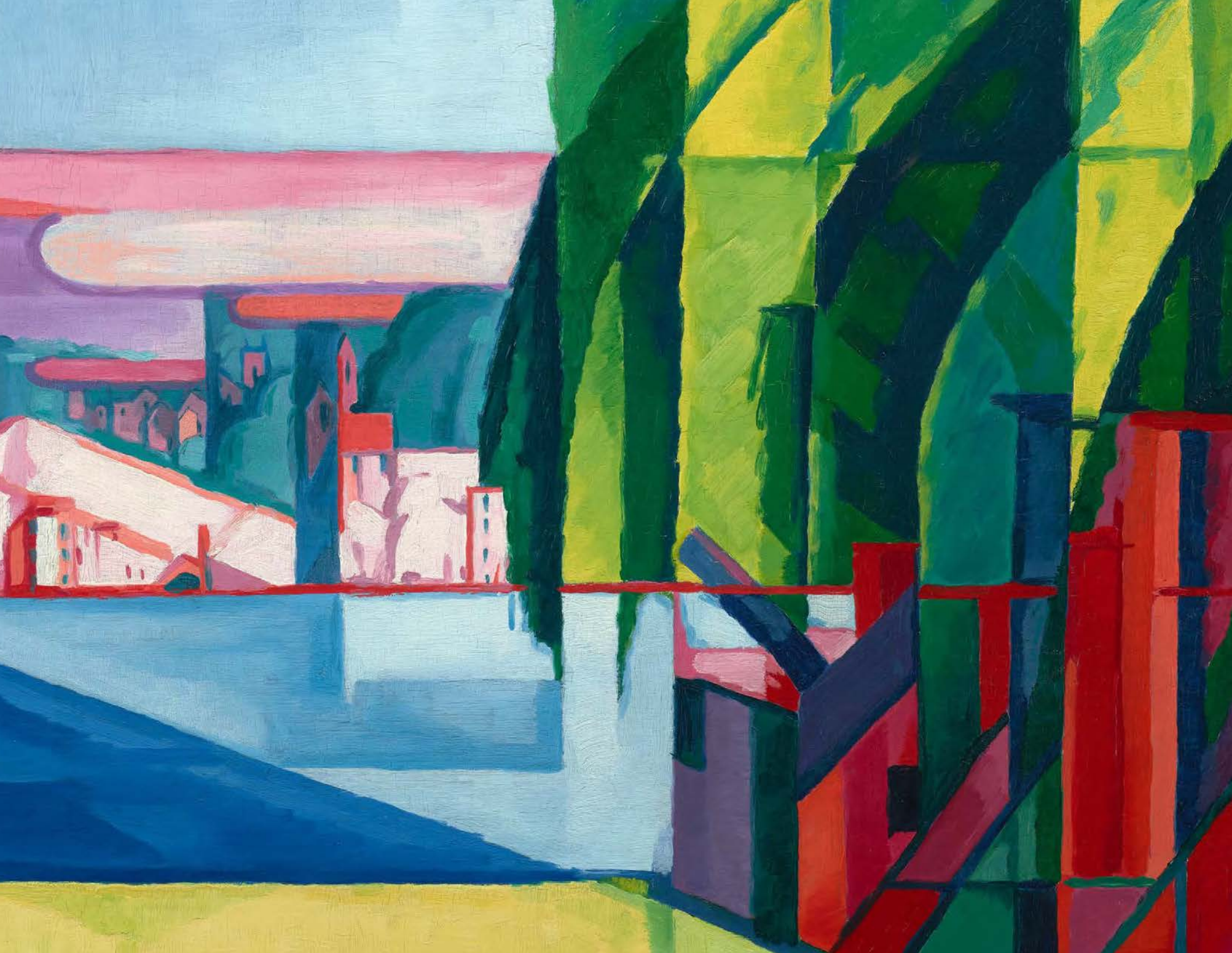
Oil on canvas

21 1/4 x 30 1/4 inches

54 x 76.8 cm

\$ 2,650,000











**Norman Lewis (1909-1979)**

*Mint Arrival*, 1975

Signed and dated at lower left: NORMAN LEWIS 75; dated and inscribed on the verso: 1975 Mint Arrival

Oil on canvas

35 $\frac{5}{8}$  x 59 $\frac{7}{8}$  inches

90.5 x 152.1 cm

\$1,500,000

Schoelkopf











**Arthur Dove (1880-1946)**

*Abstract of a Threshing Engine Sawing Wood II*, 1931

Signed at lower center: Dove

Oil on board in the artist's frame

15 x 20 inches

38.1 x 50.8 cm

\$ 1,200,000









Arshile Gorky (1904-1948)

*Still Life*, c. 1928-29

Oil on canvas

35¾ x 28 inches

90.8 x 71.1 cm

\$ 950,000

Schoelkopf









**Marsden Hartley (1877-1943)**  
*Movement No. 11*, c. 1916  
Signed and inscribed on verso:  
Movement No 11 / Marsden Hartley  
Oil on board  
24 x 20 inches  
61 x 50.8 cm

\$ 2,000,000









**Marsden Hartley (1877-1943)**

*A View from a Window (Adieu au Cheval)*, 1935-36

Signed and inscribed on the reverse: HARTLEY, 220 E 60

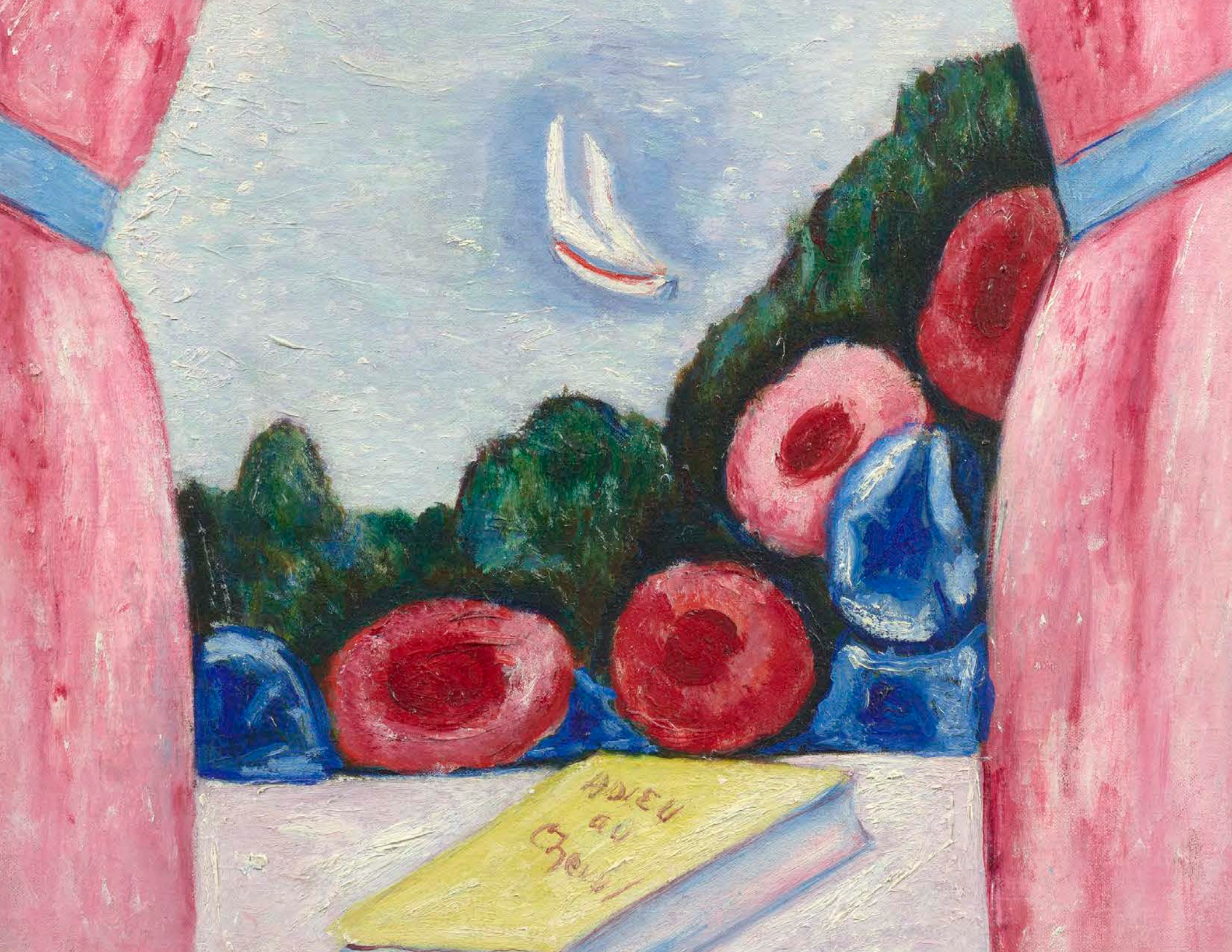
Oil on canvasboard

24 x 18 inches

61 x 45.7 cm

\$ 1,500,000









**Felrath Hines (1913-1993)**

*The Bush*, 1962

Signed and dated at lower right: FELRATH HINES '62

Oil on canvas

49 x 49 inches

124.5 x 124.5 cm

\$ 135,000













Charles Demuth (1883-1935)

*Calla Lily*, c. 1916-17

Tempera on board

19 ½ x 16 inches

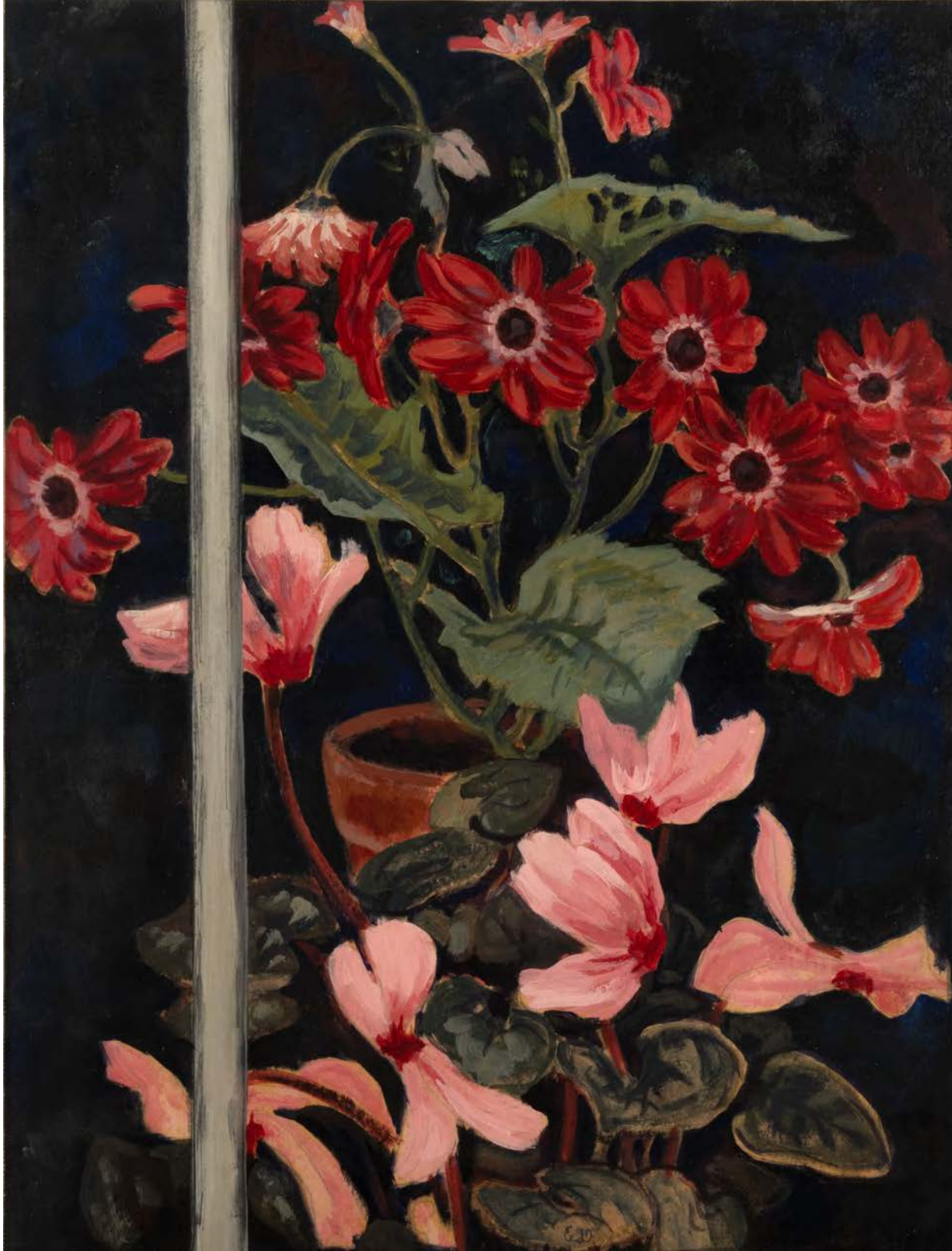
49.5 x 40.6 cm

\$ 375,000









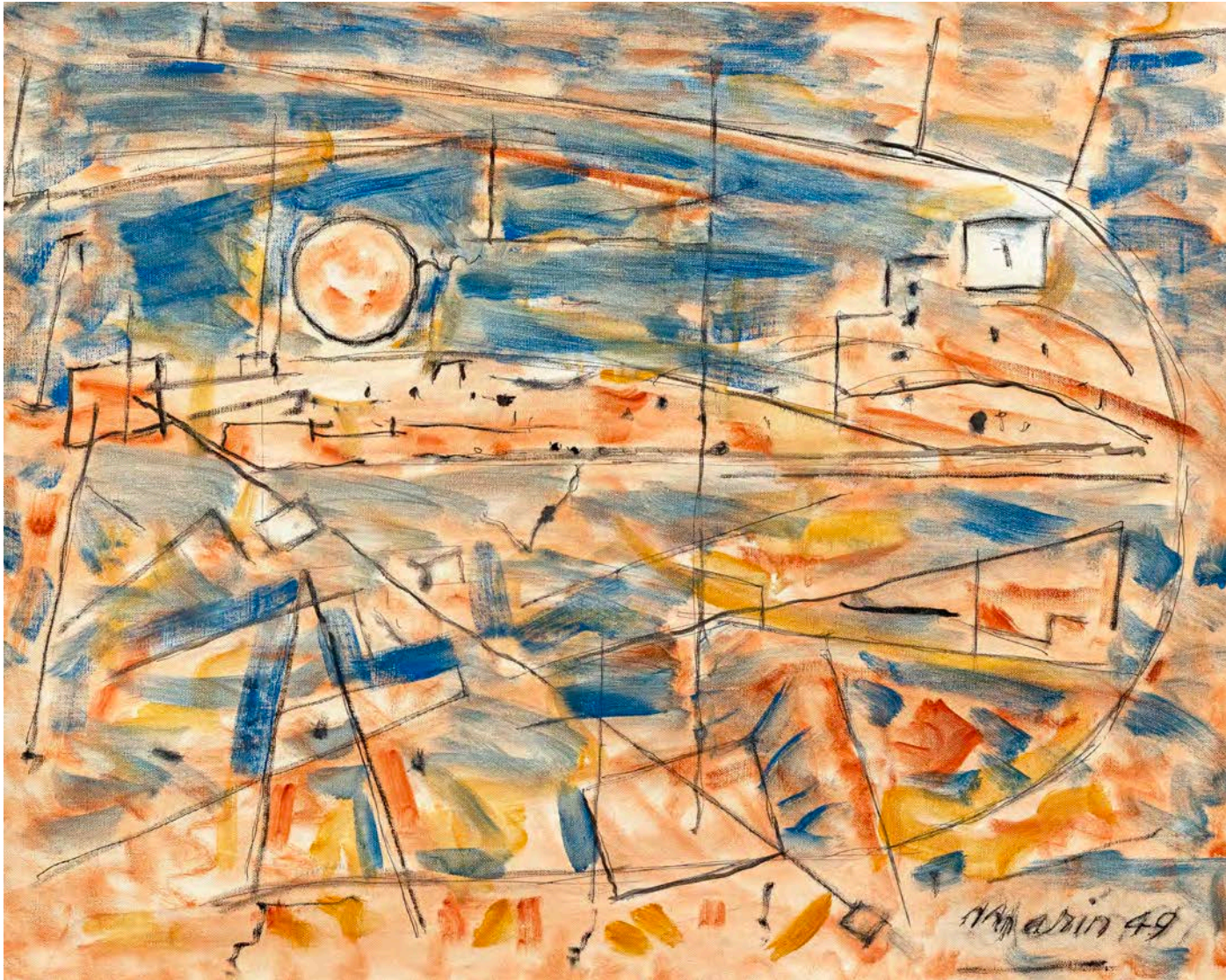
**Charles Demuth (1883-1935)**  
*Red Cineraria and Cyclamen, c. 1916-17*  
Initialed at lower center: C.D.  
Tempera on board  
19 ½ x 15 inches  
49.5 x 38.1 cm

\$ 375,000









**John Marin (1870-1953)**

*Full Moon Over the City, No. 1, 1949*

Signed and dated at lower right: Marin 49

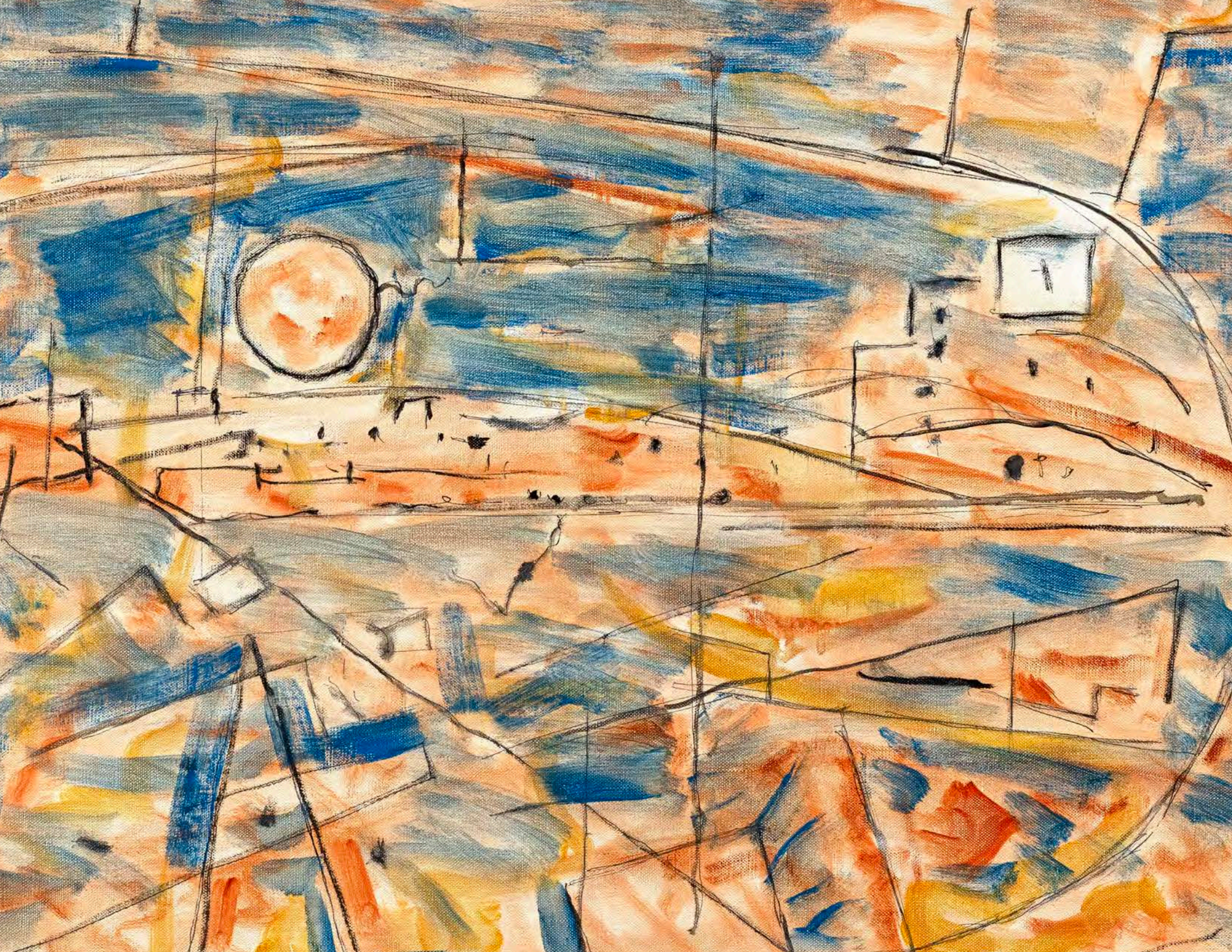
Oil on canvas

22½ x 28½ inches

56.2 x 71.4 cm

\$ 575,000













**Bob Thompson (1937-1966)**

*Tree Lift*, 1962-63

Signed and dated at lower left:

BThompson '63; signed, dated and  
inscribed on verso: BThompson / '62

Paris / "Tree Lift"

Gouache on paper

21 x 18 inches

53.3 x 45.7 cm

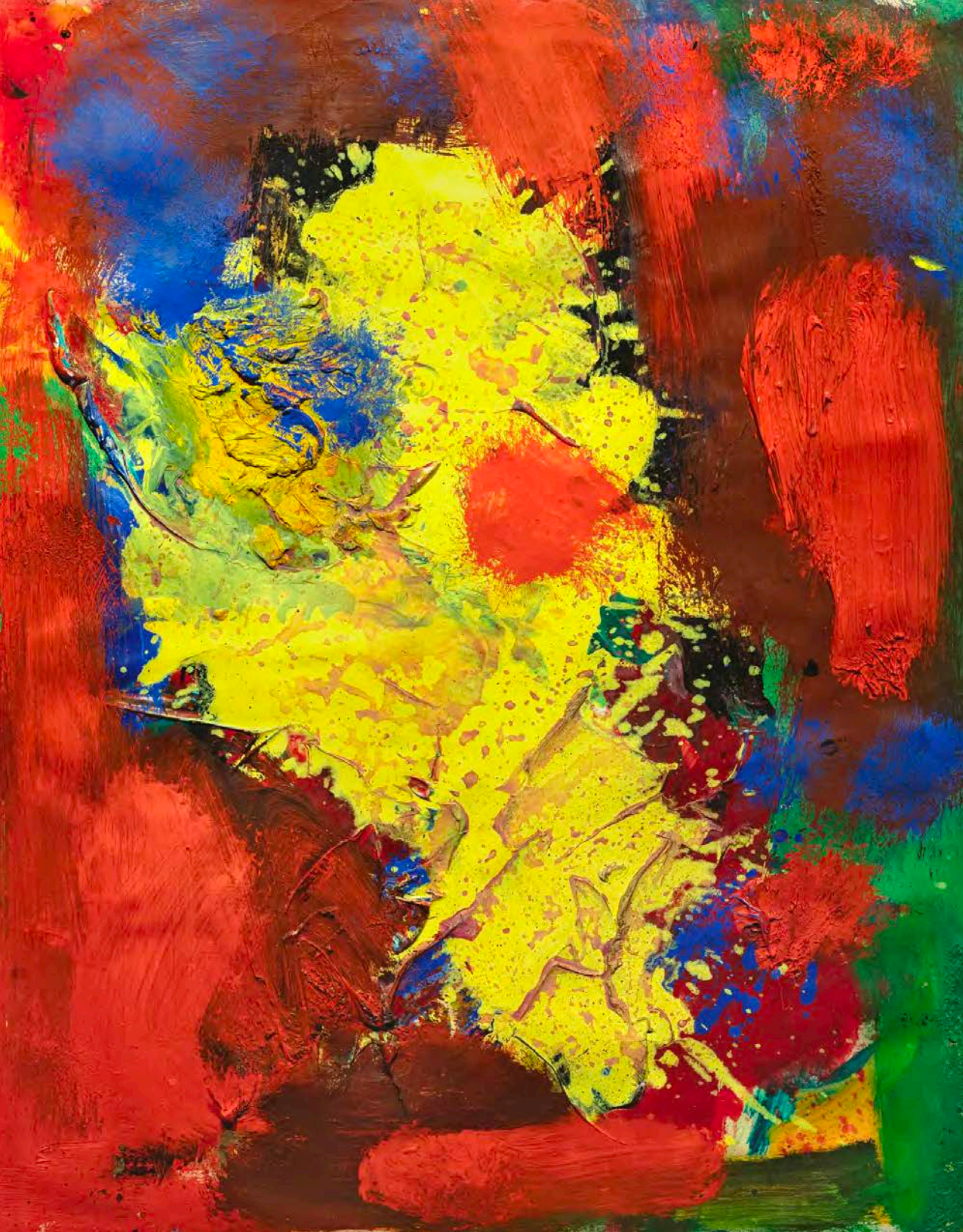
\$ 140,000

Schoelkopf









Hans Hofmann (1880-1966)

*Untitled*, 1962

Oil on paper

23<sup>5</sup>/<sub>8</sub> x 18 inches

60 x 45.7 cm

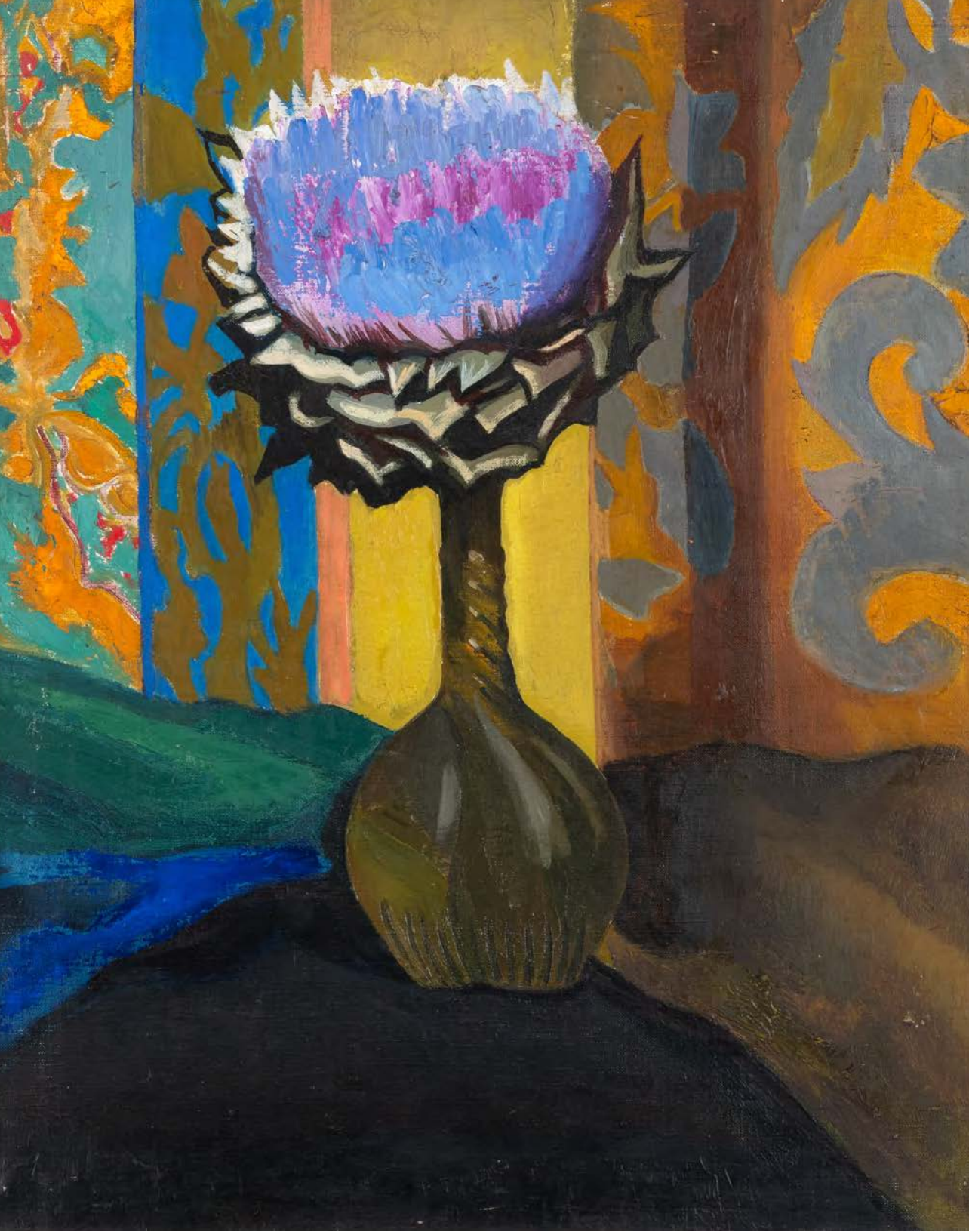
\$ 125,000

Schoelkopf









Joseph Stella (1877-1946)

*Flower*, c. 1930

Oil on canvas

18 x 15 inches

45.7 x 35.6 cm

\$ 165,000









**Thomas Hart Benton (1889-1975)**  
*Paint Mill Brook, Chilmark (Woodland Stream)*, 1969  
Signed and dated at lower right: Benton '69  
Polymer tempera on paper  
22 x 16¼ inches  
55.9 x 41.3 cm

ON RESERVE









**Thomas Hart Benton (1889-1975)**

*Chilmark Landscape*, 1925

Signed at lower right: B.

Oil on canvas

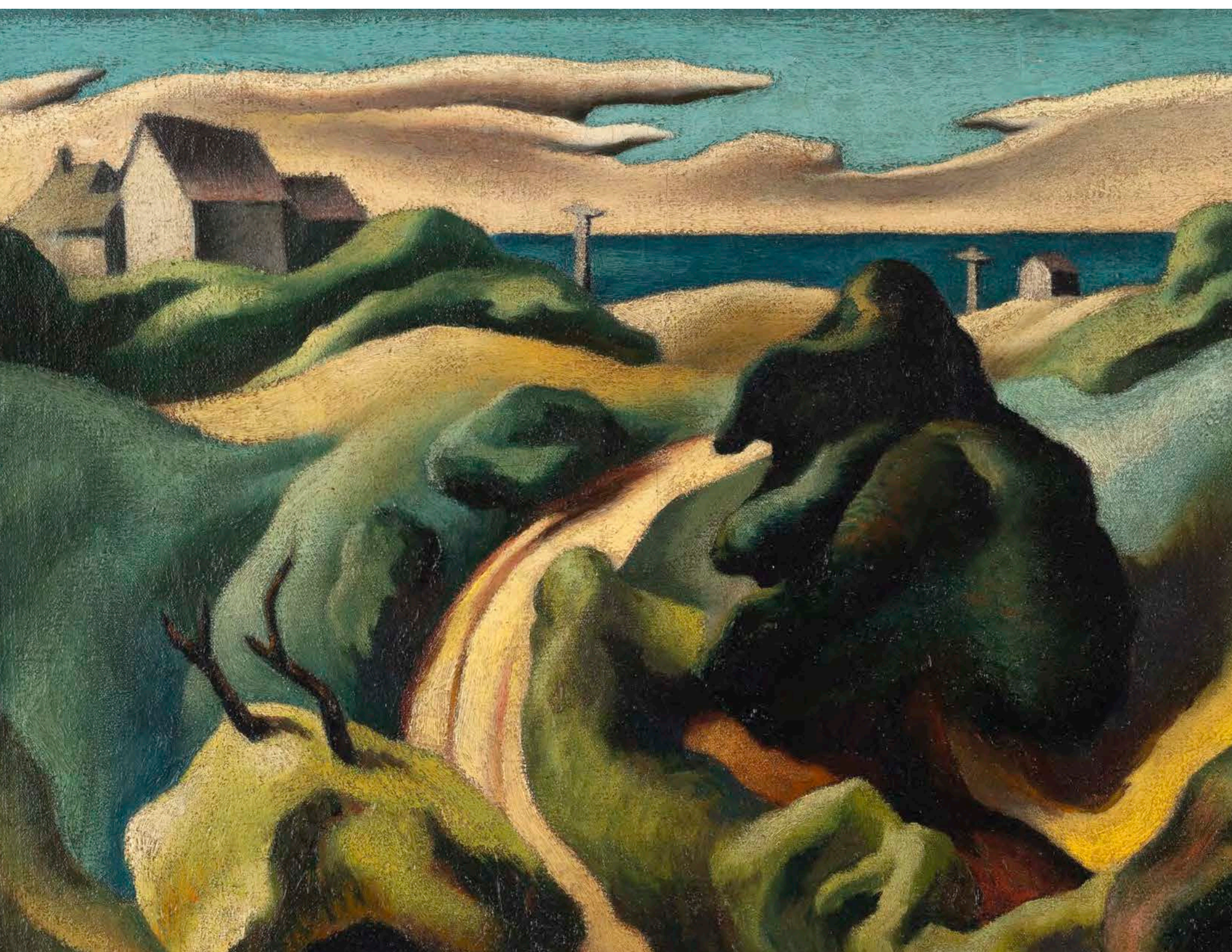
18¼ x 23 inches

46.4 x 58.4 cm

ON RESERVE

Schoelkopf









Thomas Hart Benton (1889-1975)  
*Edge of the Field (Cotton Pickers)*, 1943-61  
Signed and dated at lower right: Benton '43. / '61  
Egg tempera and oil on board  
23½ x 17 inches  
59.7 x 43.2 cm

\$ 1,200,000









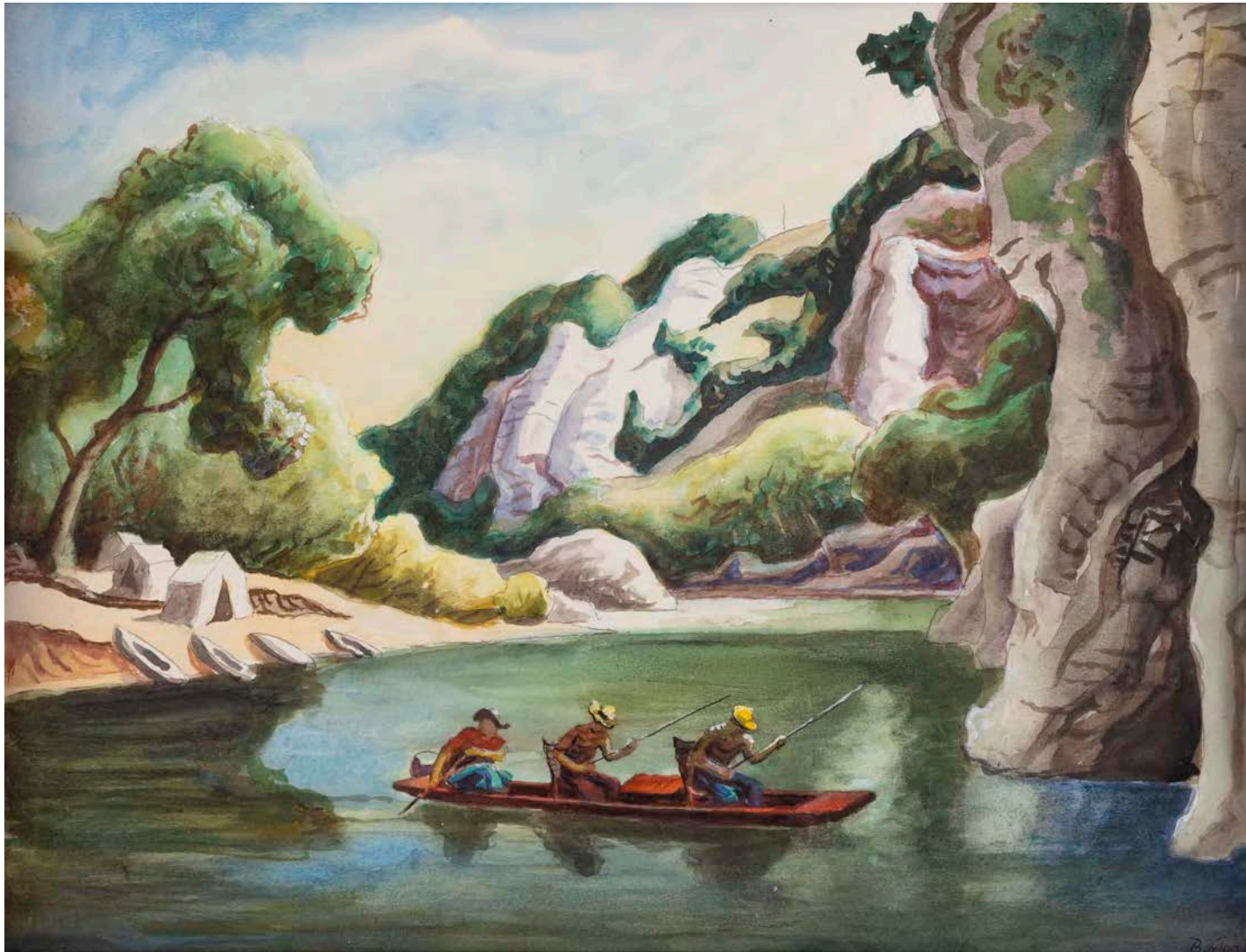
Thomas Hart Benton (1889-1975)  
*History of New York – 1653: Colonial Era (Pilgrims and  
Indians) – Study, c. 1927*  
Signed at lower right: B  
Oil on metal  
13¼ x 7¼ inches  
33.7 x 18.4 cm

\$ 300,000









**Thomas Hart Benton (1889-1975)**

*Jon Boat, Buffalo River – Study (Making Camp)*, 1973

Signed and dated at lower right: Benton '73

Watercolor, gouache, ink and graphite on paper

10¼ x 13½ inches

26 x 34.3 cm

\$ 180,000









Thomas Hart Benton (1889-1975)

*Wyoming Landscape*, 1967

Signed and dated at lower left: Benton '67

Oil on Masonite

10½ x 19½ inches

26.7 x 49.5 cm

\$ 475,000









**Andrew Wyeth (1917-2009)**

*High Waders, 1984*

Signed at upper left: Andrew Wyeth

Watercolor on paper

29  $\frac{3}{4}$  x 21  $\frac{1}{4}$  inches

75.6 x 54 cm

\$ 675,000









**Andrew Wyeth (1917-2009)**

*Mother Archie's Church Study, 1945*

Signed and dated at upper right: Andrew Wyeth / 1945

Watercolor on paper

14 ¼ x 20 ½ inches

36.2 x 52.1 cm

\$ 325,000









**Andrew Wyeth (1917-2009)**

*Turtleneck*, 1984

Signed at upper right: Andrew Wyeth

Tempera on panel

22 x 34 ¼ inches

55.9 x 87 cm

\$ 4,850,000

Schoelkopf









**Andrew Wyeth (1917-2009)**

*Untitled, 1938*

Signed at lower right: A. Wyeth / A.W.

Watercolor on paper

14 $\frac{7}{8}$  x 21 inches

37.8 x 53.3 cm

\$ 385,000









**Andrew Wyeth (1917-2009)**

*Untitled, 1939*

Signed at lower left: Andrew Wyeth; initialed at lower right: AW

Watercolor on paper

15 x 21 inches

38.1 x 53.3 cm

\$ 385,000









**Andrew Wyeth (1917-2009)**  
*Study for "Trammel", 1985*  
Signed at lower right: A. Wyeth  
Pencil on paper  
22 ½ x 18 inches  
57.1 x 45.7 cm

\$ 145,000









**Andrew Wyeth (1917-2009)**

*Whalebone*, 1973

Signed at lower right: Andrew Wyeth

Watercolor on paper

21 x 29 ½ inches

53.3 x 74.9 cm

\$ 550,000









**Max Weber (1881-1961)**

*Still Life with Purple Leaves*, 1912

Signed and dated at lower right: MAX WEBER 1912

Oil on canvas

13¾ x 19¾ inches

34.9 x 50.2 cm

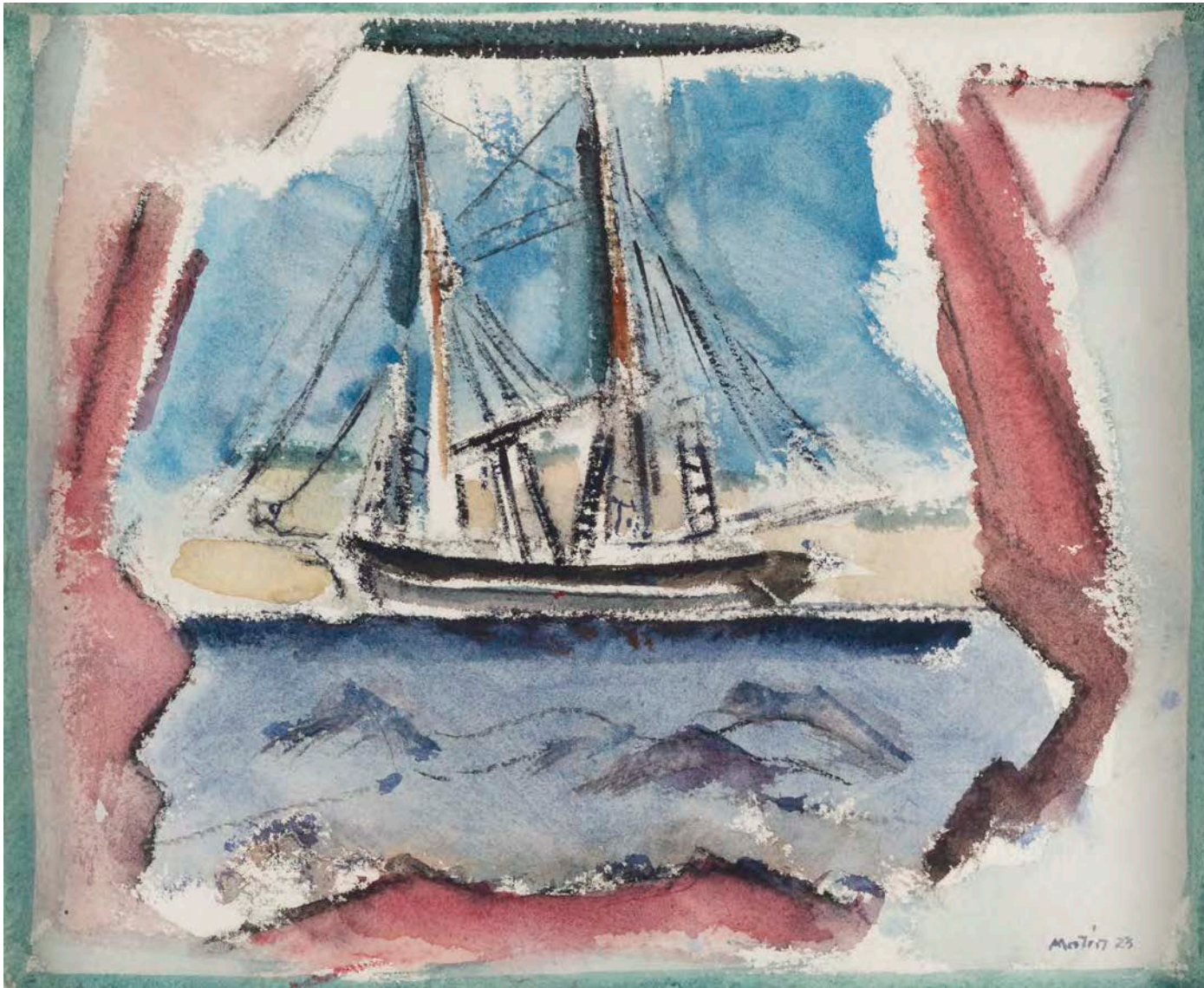
\$ 160,000





MAXWEBER 1912





**John Marin (1870-1953)**

*Bare Poles, Two Master, Maine, 1923*

Signed and dated at lower right: Marin 23; inscribed, dated and signed on verso: Bare Poles, Two Master, Maine, 1923 / by John Marin

Watercolor on paper

13 x 15 5/8 inches

33 x 39.7 cm

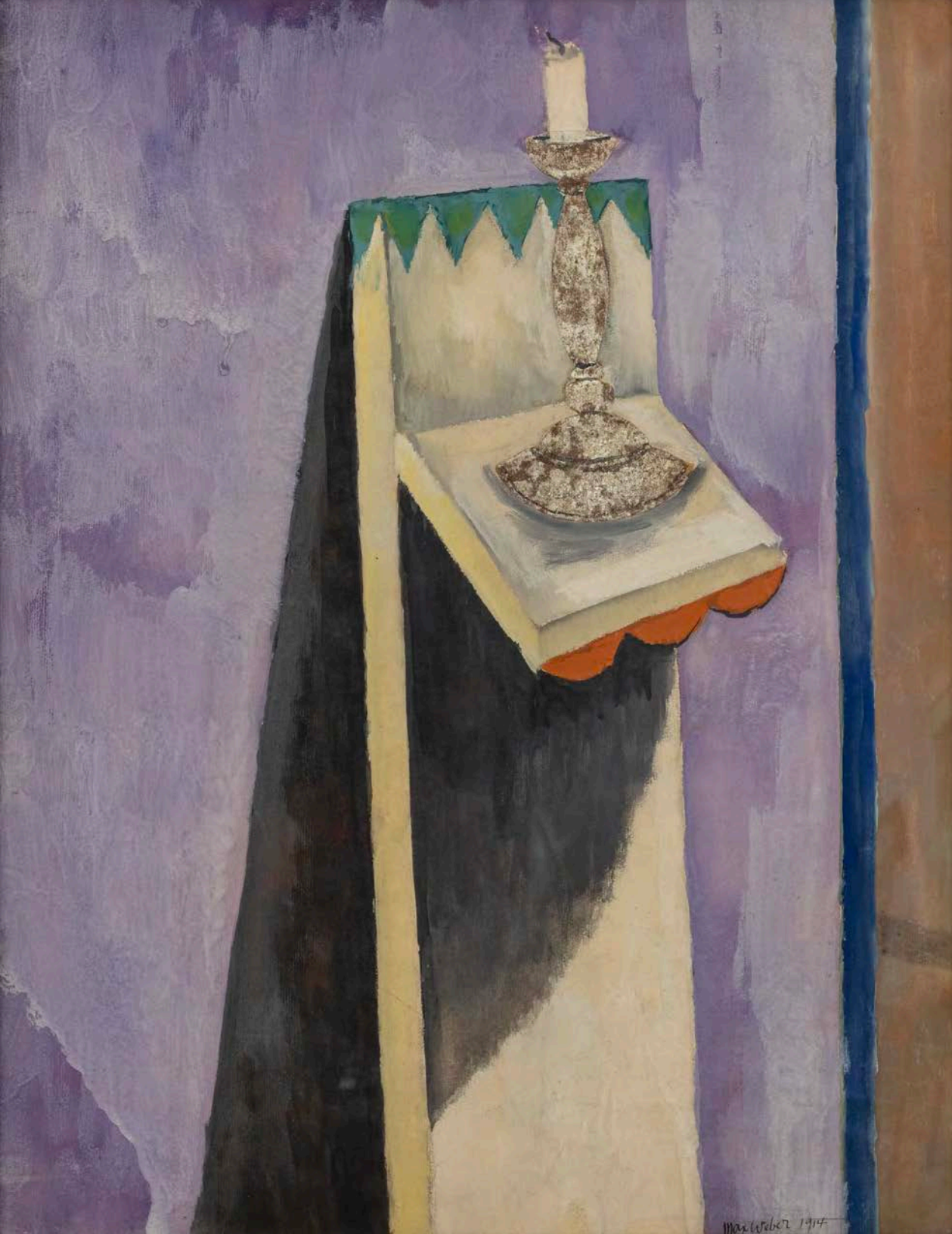
\$ 135,000

Schoelkopf









**Max Weber (1881-1961)**

*The Brass Candlestick*, 1914

Signed and dated at lower right: Max Weber 1914

Gouache and goldleaf collage on paper

24½ x 18¾ inches

62.2 x 47.6 cm

\$ 245,000









**Max Weber (1881-1961)**

*Bathers*, 1946

Signed at lower right: Max Weber

Oil on canvas

28 x 36 inches

71.1 x 91.4 cm

\$ 350,000







# Schoelkopf Gallery at Art Basel | Miami Beach

Booth D21  
Art Basel | Miami Beach  
Miami Beach Convention Center  
December 6 - 10, 2023

Andrew Schoelkopf

Principal

[andrew@schoelkopfgallery.com](mailto:andrew@schoelkopfgallery.com)

(914) 886-2700

Alana Ricca

Managing Director

[alana@schoelkopfgallery.com](mailto:alana@schoelkopfgallery.com)

(203) 524-2694

Schoelkopf