

WHITE CUBE

An abstract artwork featuring a dense network of blue and black lines on a light, textured background. The lines are expressive and gestural, with some areas showing dark, dripping paint. The overall composition is dynamic and layered.

FRIEZE NEW YORK

7-11 May 2025

ETEL ADNAN
DARREN ALMOND
ELLEN ALTFEST
CHRISTINE AY TJOE
GEORG BASELITZ
BRAM BOGART
FRANK BOWLING
ALEX CARVER
JULIE CURTISS
LYNNE DREXLER
TRACEY EMIN
CERITH WYN EVANS
THEASTER GATES

ANTONY GORMLEY
AL HELD
DAMIEN HIRST
MARGUERITE HUMEAU
RACHEL KNEEBONE
IMI KNOEBEL
YOKO MATSUMOTO
TIONA NEKKIA MCCLODDEN
SARAH MORRIS
ALBERT OEHLER
PARK SEO-BO
ILANA SAVDIE
HAIM STEINBACH

Stand B9
The Shed
545 West 30th Street
New York, NY 10001

TRACEY EMIN

My World Was Broken Because of You
2024

Acrylic on canvas

203 × 280.2 cm | 79 ¹⁵/₁₆ × 110 ⁵/₁₆ in.

204.6 × 281.8 × 4.5 cm | 80 ⁹/₁₆ × 110 ¹⁵/₁₆ × 1 ³/₄ in. (framed)

GBP 1,200,000 *plus applicable taxes*

Click [HERE](#) to view a video of this work



Tracey Emin has two major solo exhibitions open in 2025: one at Fondazione Palazzo Strozzi in Florence, Italy, from 16 March to 20 July, and another at the Yale Center for British Art in New Haven, Connecticut, from 29 March to 10 August.



THEASTER GATES

Memoriam 3

2019

1970s ascot pattern made from artist's clothing, garments
variable and bronze

83.8 × 45.7 × 50.8 cm | 33 × 18 × 20 in.

USD 325,000 *plus applicable taxes*





CHRISTINE AY TJOE

Lesser Numerator #05

2023

Oil on canvas

Diptych, overall: 200 × 360 cm | 78 ¾ × 141 ¾ in.

USD 280,000 *plus applicable taxes*

Click [HERE](#) to view a video of this work



White Cube New York will open an exhibition of new paintings by Christine Ay Tjoe on 27 June 2025. Focusing on the human condition, these expressive works delve into themes of philosophy and spirituality, seeking to connect with our most powerful emotions and deep-seated psychological fears.



ANTONY GORMLEY

SHELF

2024

Oak

178.2 × 53 × 38.5 cm | 70 $\frac{3}{16}$ × 20 $\frac{7}{8}$ × 15 $\frac{3}{16}$ in.

GBP 325,000 *plus applicable taxes*





Antony Gormley's solo exhibition 'WITNESS: Early Lead Works' is open at White Cube Mason's Yard, London until 8 June 2025. These early lead works – initiated in the mid-1970s – represent a major breakthrough in the development of Gormley's visual language.



ALBERT OEHLER

Untitled

2014

Oil on board

170 × 210 cm | 66 ¹⁵/₁₆ × 82 ¹/₁₆ in.

171 × 211 cm | 67 ⁵/₁₆ × 83 ¹/₁₆ in. (framed)

USD 1,200,000 *plus applicable taxes*





GEORG BASELITZ

Römischer Gruß

2004

Bronze and oil paint

Edition of 6 and 1 AP

134.5 × 38.9 × 65.8 cm | 52 ¹⁵/₁₆ × 15 ⁵/₁₆ × 25 ⁷/₈ in.

USD 1,350,000 *plus applicable taxes*





THEASTER GATES

Tri-color Diptych

2024

Industrial oil-based enamel, rubber torch down, bitumen and wood

Diptych, each: 245.5 × 121.5 × 11 cm | 96 $\frac{5}{8}$ × 47 $\frac{13}{16}$ × 4 $\frac{5}{16}$ in.

Overall: 245.5 × 248 × 11 cm | 96 $\frac{5}{8}$ × 97 $\frac{5}{8}$ × 4 $\frac{5}{16}$ in.

USD 550,000 *plus applicable taxes*





ETEL ADNAN

Plage Déserte

1960s (2022)

Tapestry

Edition of 3

135 × 177.5 cm | 53 ⅞ × 69 ⅞ in.

USD 180,000 *plus applicable taxes*





PARK SEO-BO

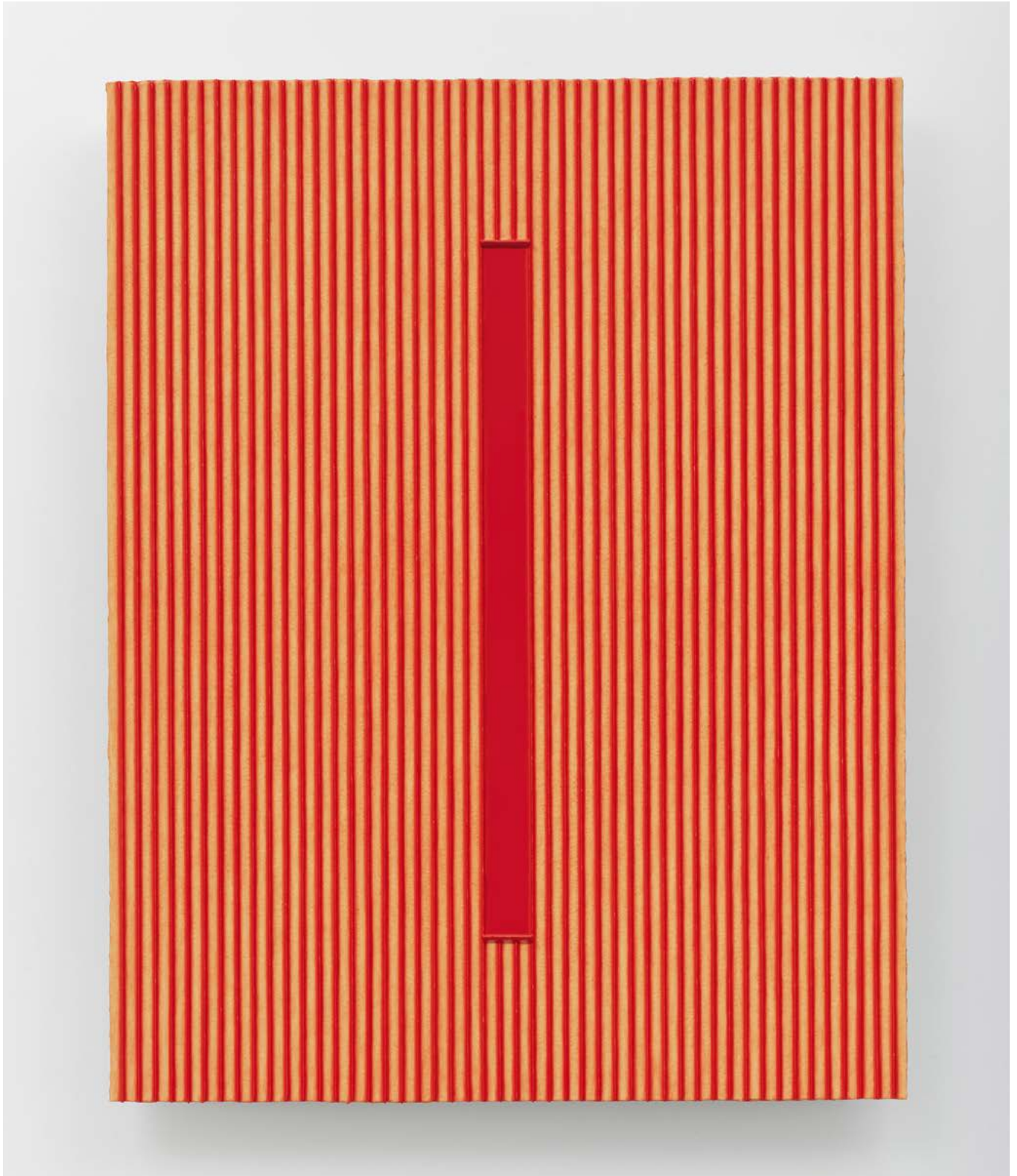
Ecriture No. 220829

2022

Acrylic on ceramic

98.5 × 76.5 cm | 38 ¾ × 30 ⅞ in.

USD 280,000 *plus applicable taxes*



LYNNE DREXLER

Eclipse

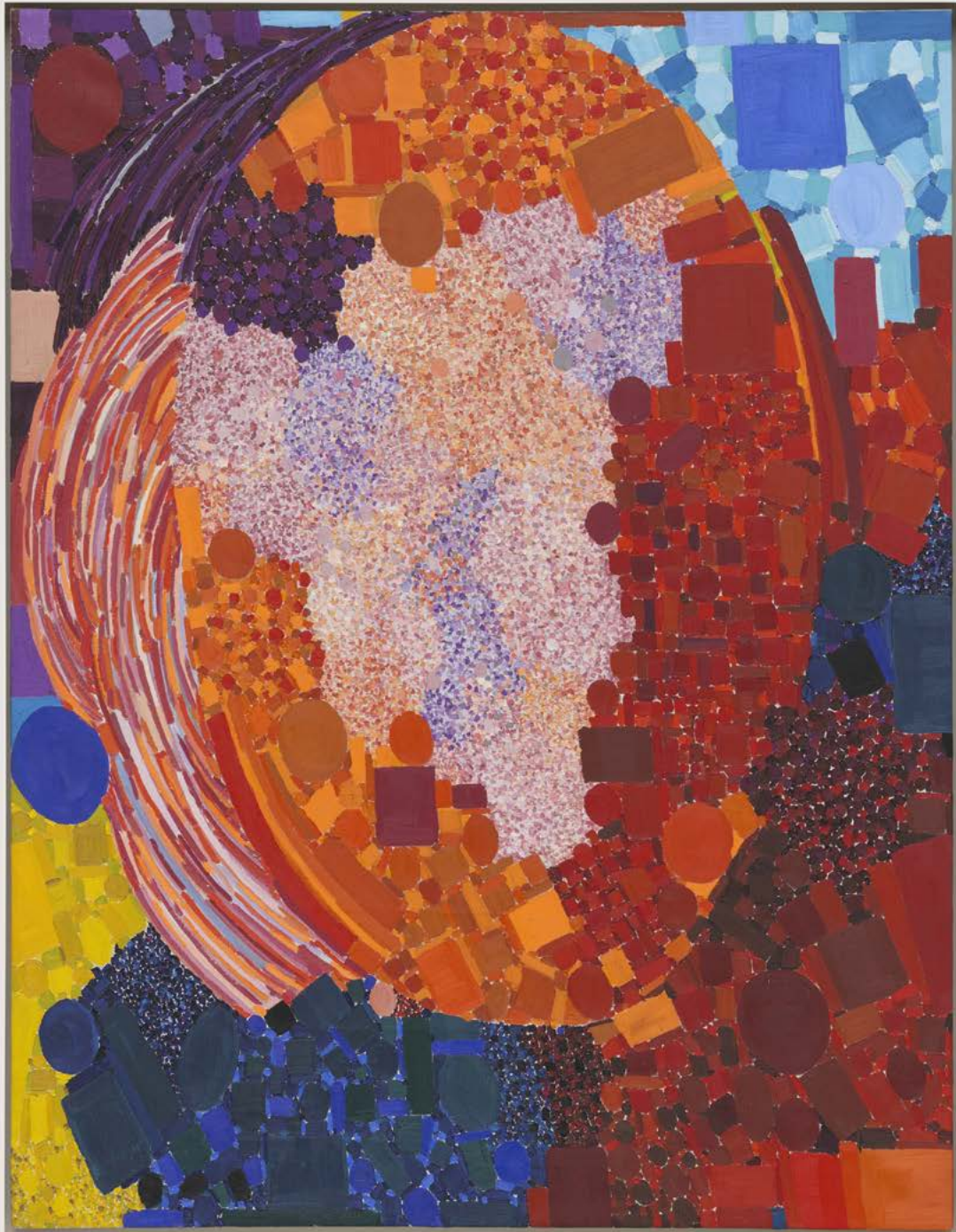
1966

Oil on canvas

127 × 98.1 cm | 50 × 38 5⁄8 in.

132.7 × 103.5 × 5.7 cm | 52 ¼ × 40 ¾ × 2 ¼ in. (framed)

USD 975,000 *plus applicable taxes*



White Cube Hong Kong is pleased to present the first exhibition in Asia of paintings by American artist Lynne Drexler (1928–99), on view through 17 May 2025.



FRANK BOWLING

Sunrise

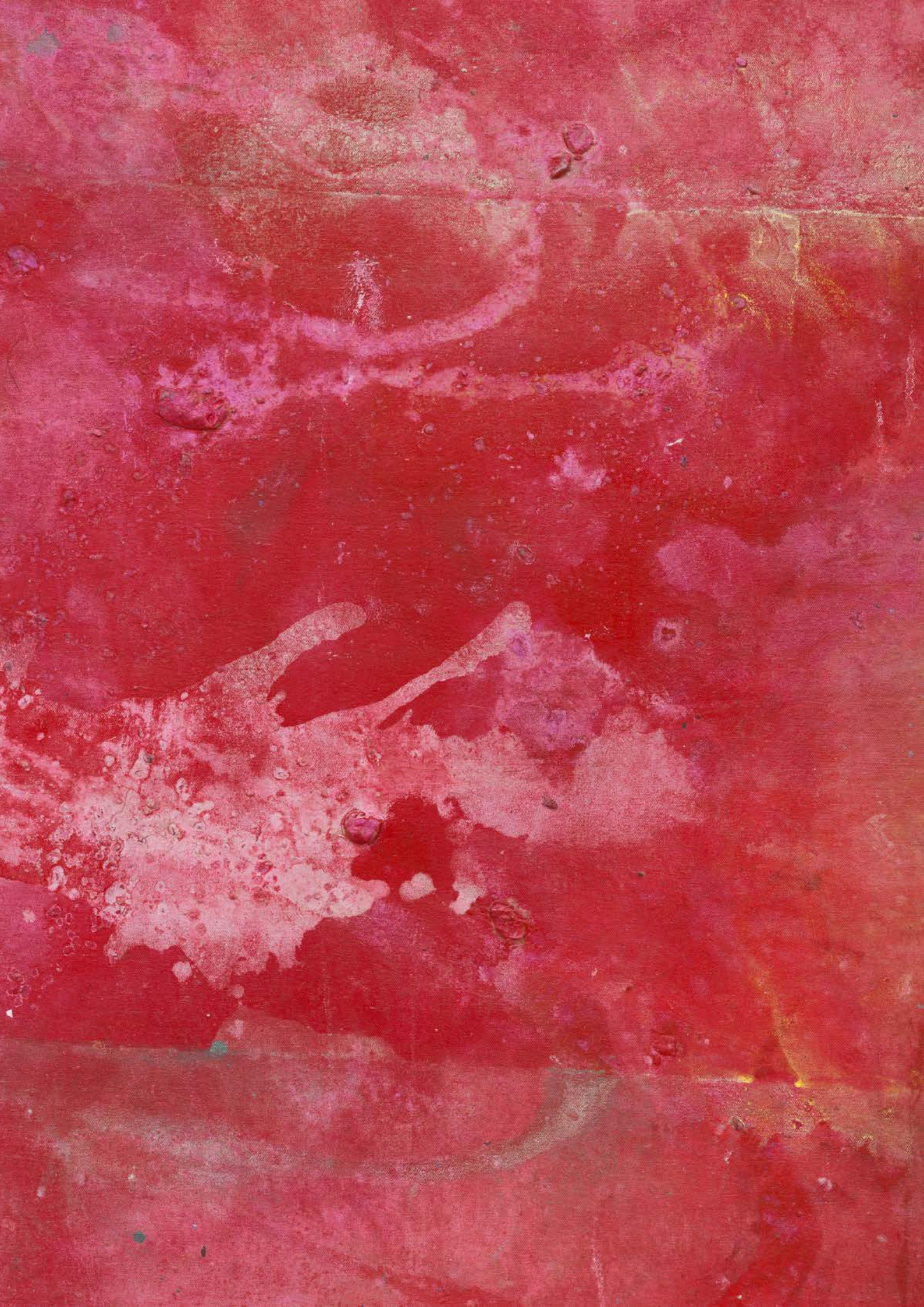
2020

Acrylic and acrylic gel on canvas with marouflage

101.6 × 185.4 cm | 40 × 73 in.

USD 650,000 *plus applicable taxes*





BRAM BOGART

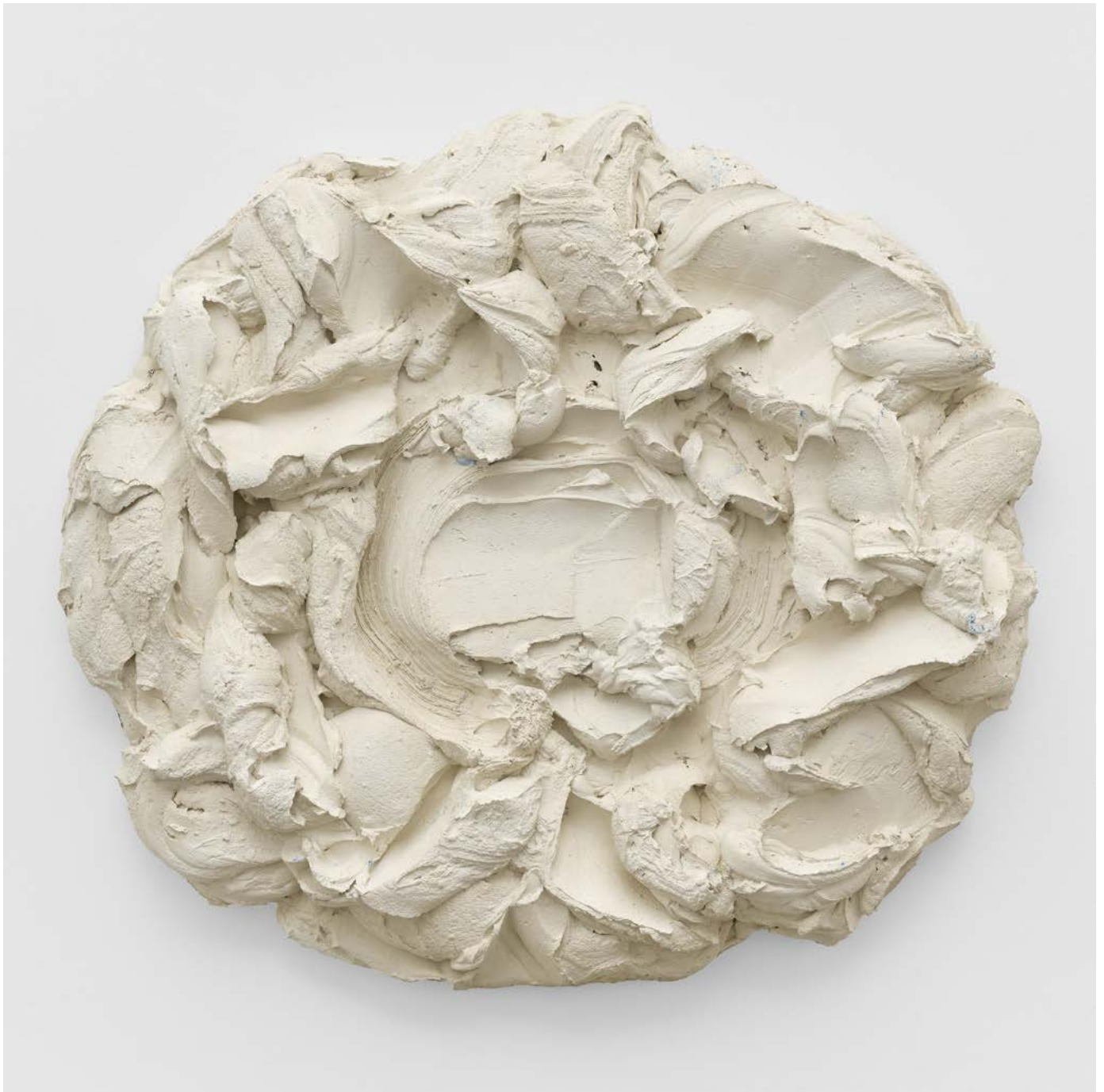
Zonnewit

1996

Mixed media

92 × 102.5 × 15 cm | 36 ¼ × 40 ¾ × 5 ⅞ in.

EUR 80,000 *plus applicable taxes*





DAMIEN HIRST

Provocative

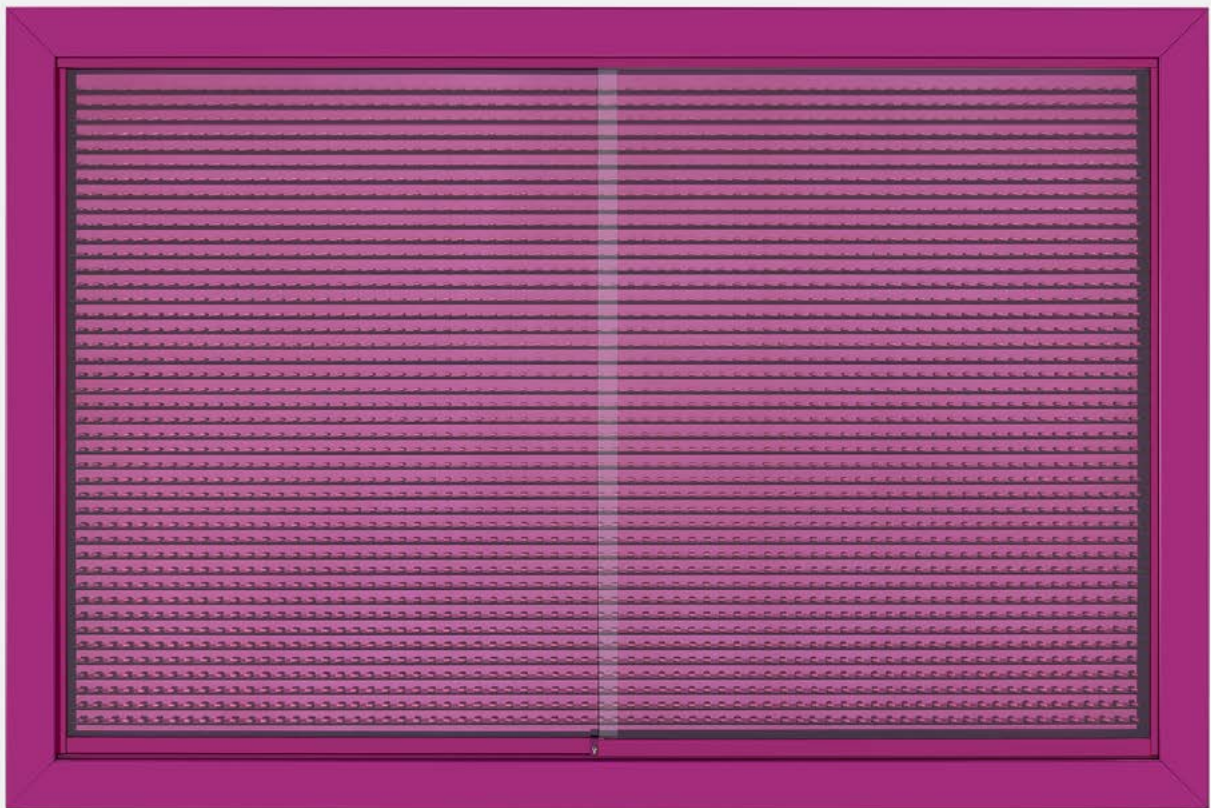
2013

Glass, painted stainless steel, steel, painted aluminium
and painted zamac pills

132 × 198 × 10 cm | 51 ¹⁵/₁₆ × 77 ¹⁵/₁₆ × 3 ¹⁵/₁₆ in.

USD 2,250,000 *plus applicable taxes*

Click [HERE](#) to view a video of this work





ILANA SAVDIE

Left: *QUIMERA025*

2024

Monotype with oil on paper

34.6 × 27.6 cm | 13 ⁵/₈ × 10 ⁷/₈ in.

41 × 34 × 4 cm | 16 ¹/₈ × 13 ³/₈ × 1 ¹/₁₆ in. (framed)

USD 12,500 *plus applicable taxes*

Right: *QUIMERA010*

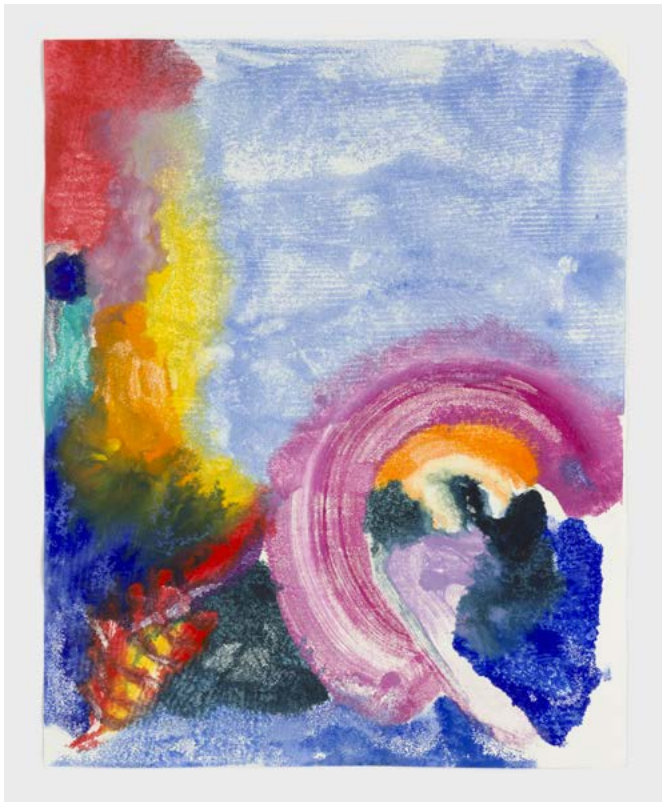
2024

Monotype with oil on paper

34.6 × 27.6 cm | 13 ⁵/₈ × 10 ⁷/₈ in.

41 × 34 × 4 cm | 16 ¹/₈ × 13 ³/₈ × 1 ¹/₁₆ in. (framed)

USD 12,500 *plus applicable taxes*



MARGUERITE HUMEAU

Common Moonwort

2023

Pigments and water on paper

63.6 × 100.6 cm | 25 ¹/₁₆ × 39 ⁵/₈ in.

65.8 × 102.8 × 4.5 cm | 25 ⁷/₈ × 40 ¹/₂ × 1 ³/₄ in. (framed)

GBP 25,000 *plus applicable taxes*



YOKO MATSUMOTO

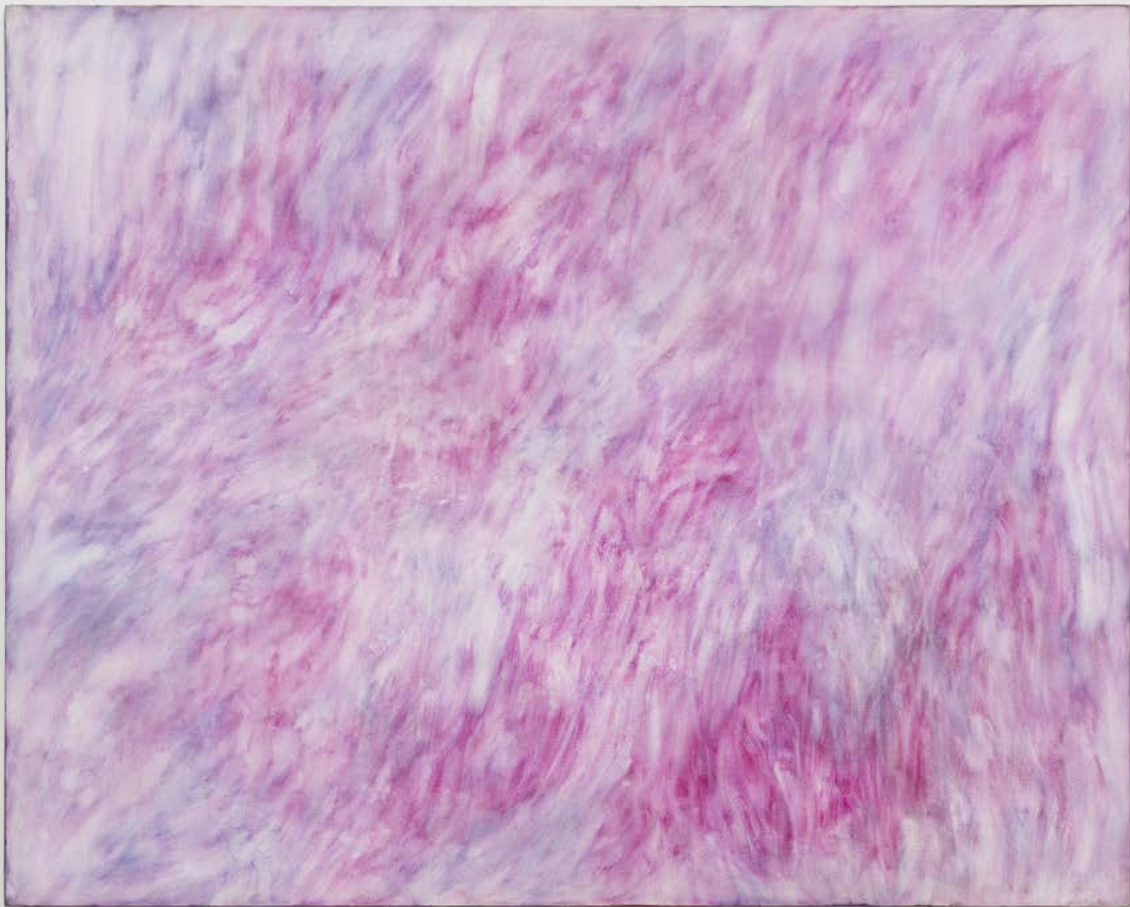
Field of Midian

1983

Acrylic on canvas

182.5 × 227.4 cm | 71 7/8 × 89 1/2 in.

USD 70,000 *plus applicable taxes*



IMI KNOEBEL

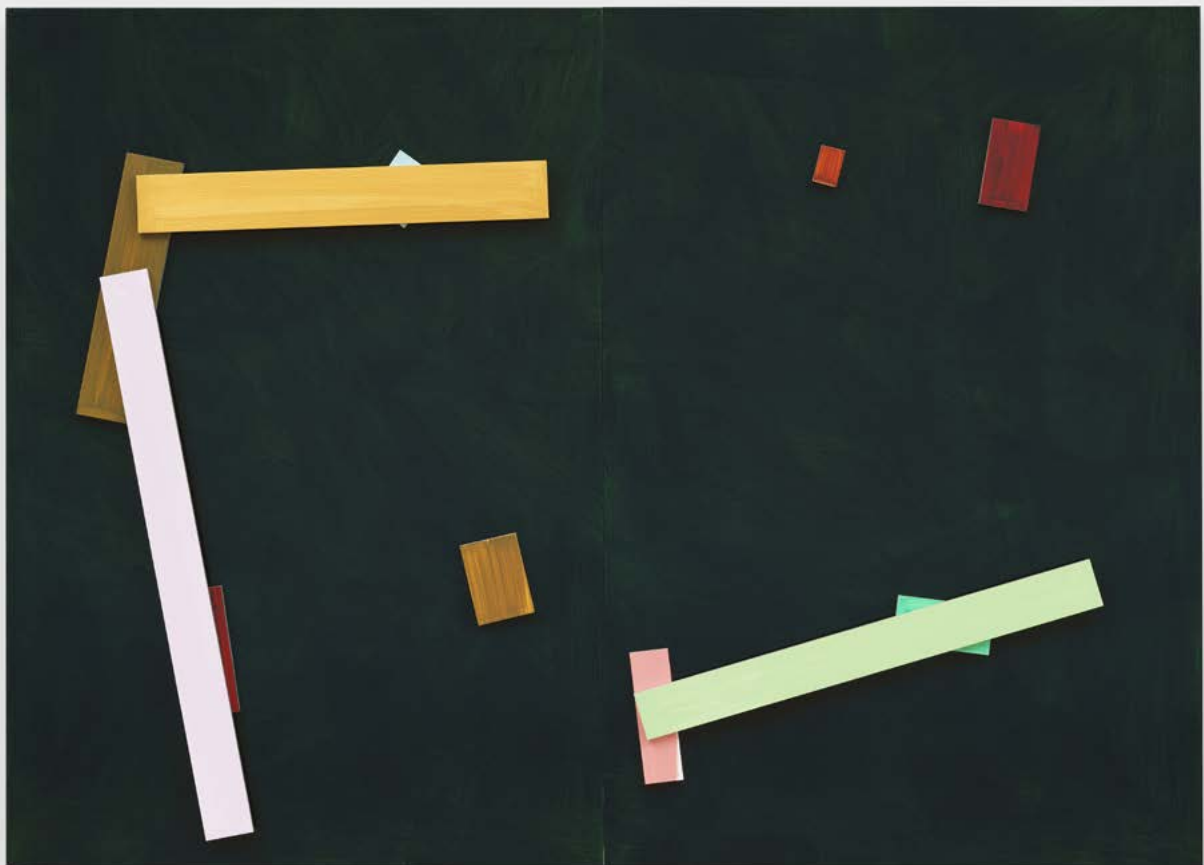
Sommer 2009–4

2009

Acrylic on aluminium

180 × 250 × 8.5 cm | 70 $\frac{7}{8}$ × 98 $\frac{1}{6}$ × 3 $\frac{3}{8}$ in.

EUR 180,000 *plus applicable taxes*





ETEL ADNAN

Jardins 14

2018

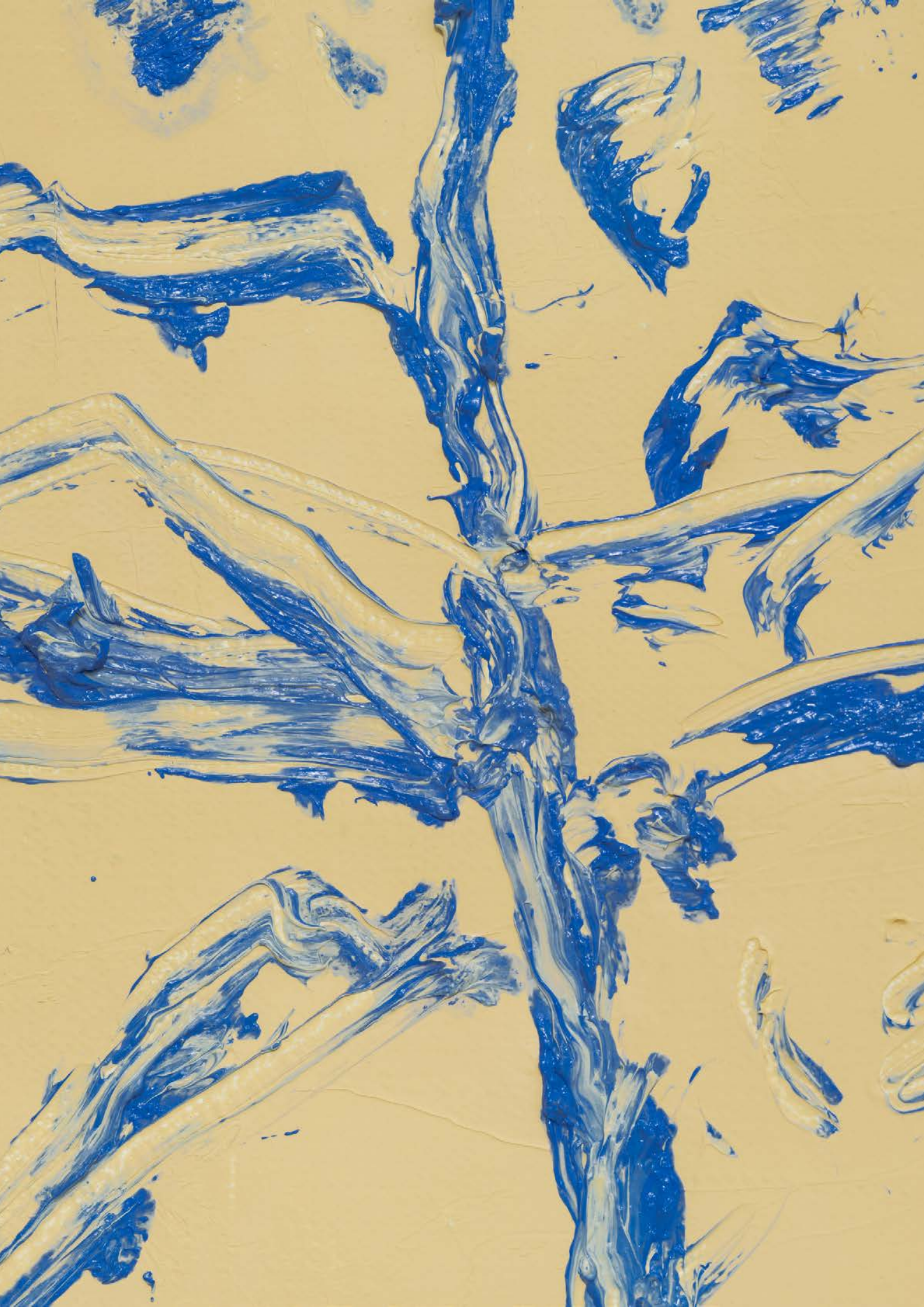
Oil on canvas

30 × 24 cm | 11 ¹³/₁₆ × 9 ⁷/₁₆ in.

33.8 × 27.8 × 5.1 cm | 13 ⁵/₁₆ × 10 ¹⁵/₁₆ × 2 in. (framed)

USD 250,000 *plus applicable taxes*





RACHEL KNEEBONE

Bud I

2023

Porcelain

59 × 14 × 10 cm | 23 ¼ × 5 ½ × 3 ⅞ in.

GBP 45,000 *plus applicable taxes*





MARGUERITE HUMEAU

The History of Old Kent Road (Post-Kossowski)

Fragments VIII-1 and VIII-2

2023

Adam Kossowski's resurrected intelligence, hand-sculpted stoneware tiles, stoneware glazes including wood-ash-based glazes and aluminium

Fragment VIII-1: 90.5 × 90.5 × 4.5 cm | 35 ⁵/₈ × 35 ⁵/₈ × 1 ³/₄ in.

Fragment VIII-2: 90.5 × 91 × 5 cm | 35 ⁵/₈ × 35 ¹³/₁₆ × 1 ¹⁵/₁₆ in.

GBP 50,000 *plus applicable taxes*





JULIE CURTISS

Upside down bat

2025

Airbrushed acrylic and gouache on paper

36.2 × 26 cm | 14 ¼ × 10 ¼ in.

48.3 × 38.5 × 3 cm | 19 × 15 ⅜ × 1 ⅜ in. (framed)

USD 35,000 *plus applicable taxes*





CERITH WYN EVANS

TIX3

2016

'Negative' neon

Edition of 10 and 2 APs

14 × 34 × 2 cm | 5 ½ × 13 ¾ × ¾ in.

GBP 18,000 *plus applicable taxes*



TIONA NEKKIA MCCLODDEN

NEVER LET ME GO | XVI. tail end.

2024

Black jute rope, leather, leather dye and Saphir shoe polish

123.2 × 62.2 × 8.3 cm | 48 ½ × 24 ½ × 3 ¼ in.

USD 75,000 *plus applicable taxes*



Work by Tiona Nekkia McClodden is featured in the group exhibition, 'Essex Hemphill: Take care of your blessings' at The Phillips Collection, Washington D.C., on view until 31 August 2025.



AL HELD

Quattro Centric VII

1989

Acrylic on canvas

213.4 × 213.4 cm | 84 × 84 in.

USD 300,000 *plus applicable taxes*





TRACEY EMIN

It Simply Felt Like This

2023

Bronze

Edition of 6 and 2 APs

10.7 × 20.5 × 8.7 cm | 4 $\frac{3}{16}$ × 8 $\frac{1}{16}$ × 3 $\frac{7}{16}$ in.

GBP 60,000 *plus applicable taxes*



ALEX CARVER

There Is A Clearing

2025

Oil on linen

198 × 198 cm | 77 ¹⁵/₁₆ × 77 ¹⁵/₁₆ in.

USD 55,000 *plus applicable taxes*



As part of the 'Inside the White Cube' programme, American painter Alex Carver (b. 1985, Boise, Idaho) opened his first solo exhibition in Asia at White Cube Seoul in April 2025. The presentation is on view through 14 June 2025.

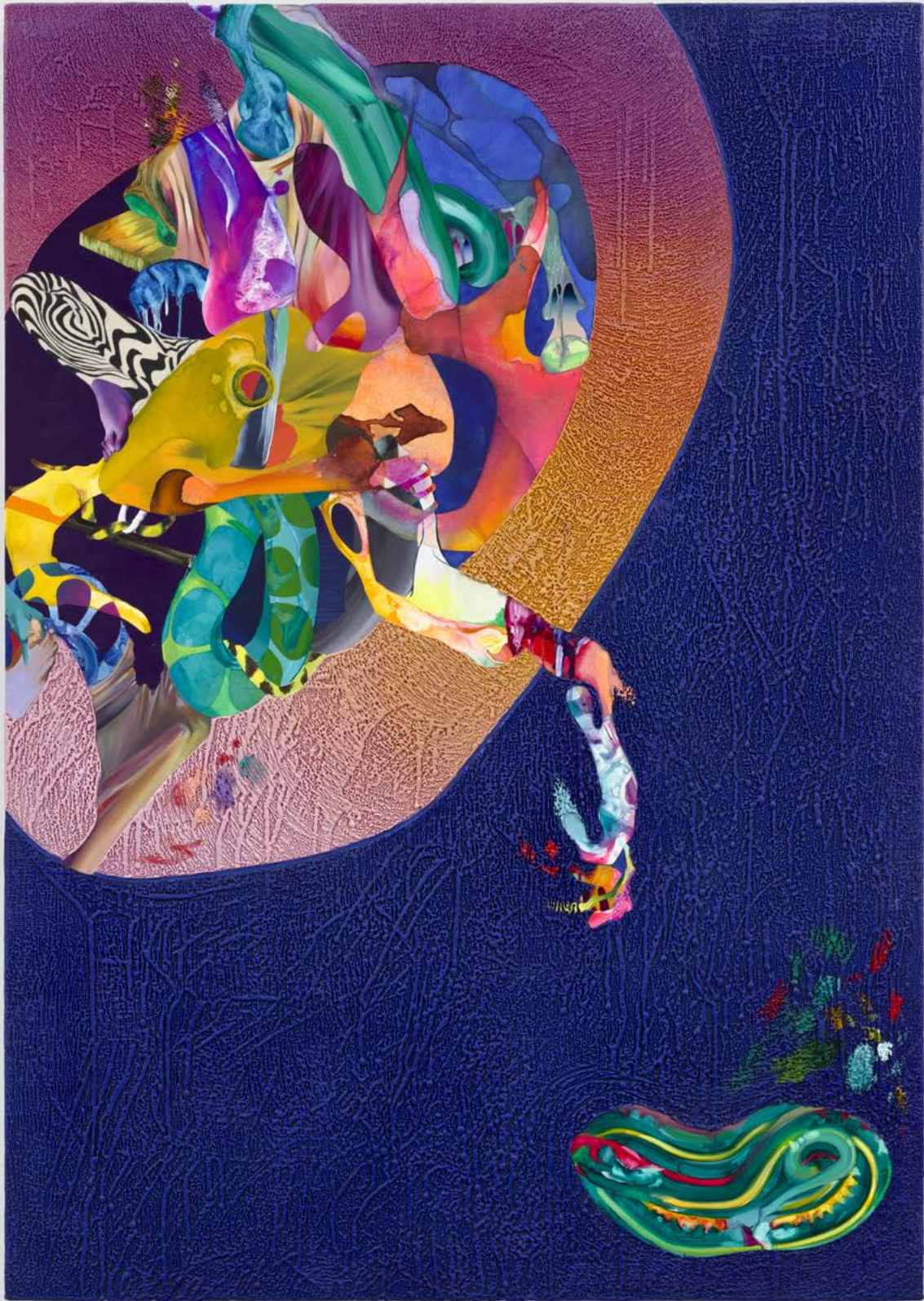


ILANA SAVDIE

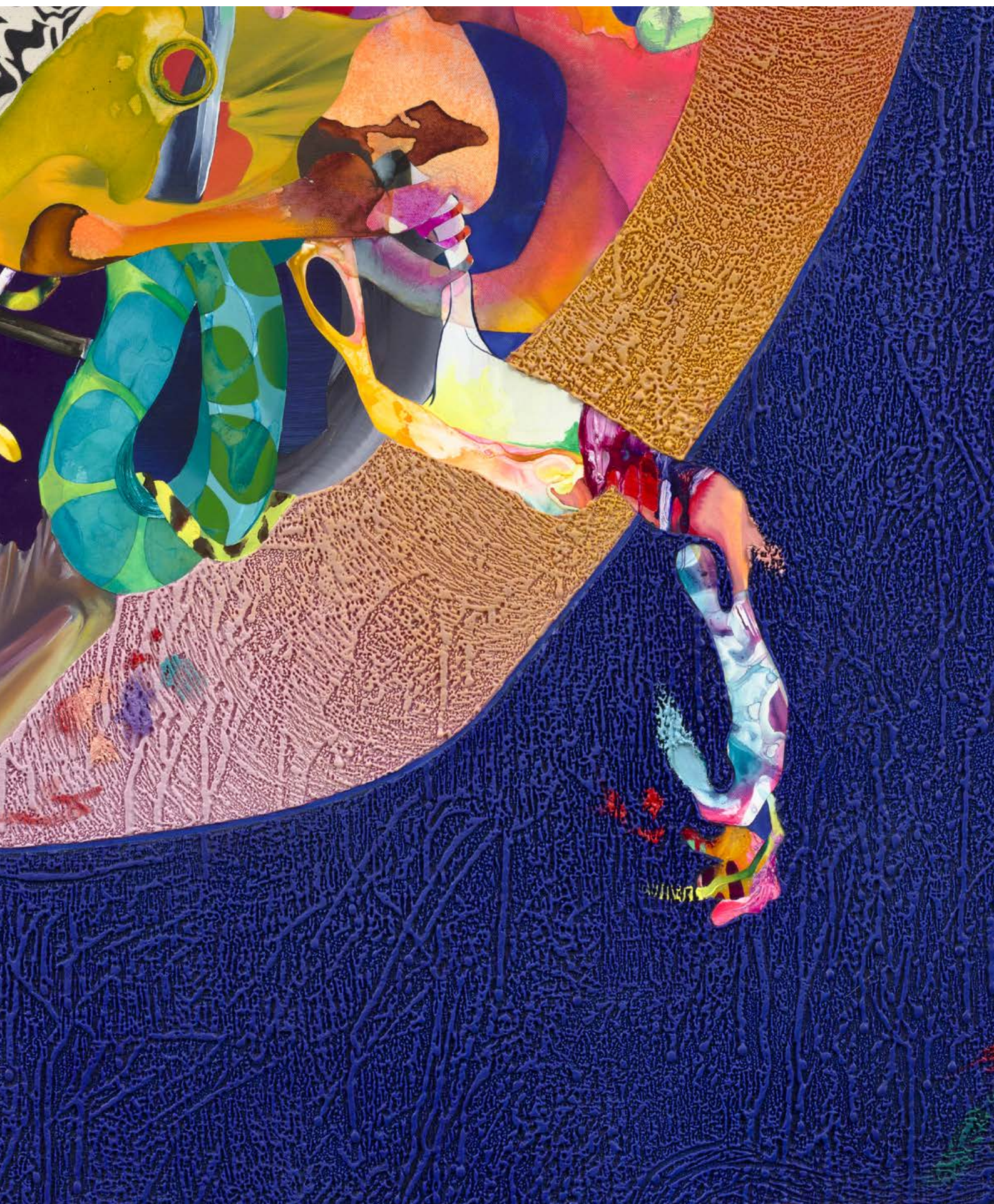
The Pulse Dares A Counter-Beat
2025

Oil, acrylic and beeswax on canvas stretched on panel
122.6 × 97.2 cm | 48 ¼ × 38 ¾ in.

USD 100,000 *plus applicable taxes*



Ilana Savdie will unveil new paintings at White Cube New York on 2 May 2025, following her solo exhibition 'Radical Contractions', at the Whitney Museum of American Art, New York, which ran from 14 July to 5 November 2023.



DARREN ALMOND

Life Line

2024

Aluminium, copper, silver, gold and acrylic on linen

72 × 518 cm | 28 ³/₈ × 203 ¹/₈ in.

GBP 75,000 *plus applicable taxes*



HAIM STEINBACH

Untitled (fin, balls)

2017

Plastic laminated wood shelf, A Flex RFC fibreglass surfboard fin
and two earthenware balls

44.8 × 73 × 20.3 cm | 17 ⁵/₈ × 28 ³/₄ × 8 in.

USD 60,000 *plus applicable taxes*





ELEN ALTFEST

Top: *Mountain Moss*

2024

Oil on canvas

5.6 × 8.4 cm | 2 $\frac{3}{16}$ × 3 $\frac{5}{16}$ in.

6.7 × 9.3 × 4.1 cm | 2 $\frac{5}{8}$ × 3 $\frac{1}{16}$ × 1 $\frac{5}{8}$ in. (framed)

USD 30,000 *plus applicable taxes*

Bottom: *Mountain Moss*

2024

Oil on canvas

13.7 × 14.4 cm | 5 $\frac{3}{8}$ × 5 $\frac{1}{16}$ in.

14.6 × 15.4 × 4.1 cm | 5 $\frac{3}{4}$ × 6 $\frac{1}{16}$ × 1 $\frac{5}{8}$ in. (framed)

USD 55,000 *plus applicable taxes*



SARAH MORRIS

Apple Park

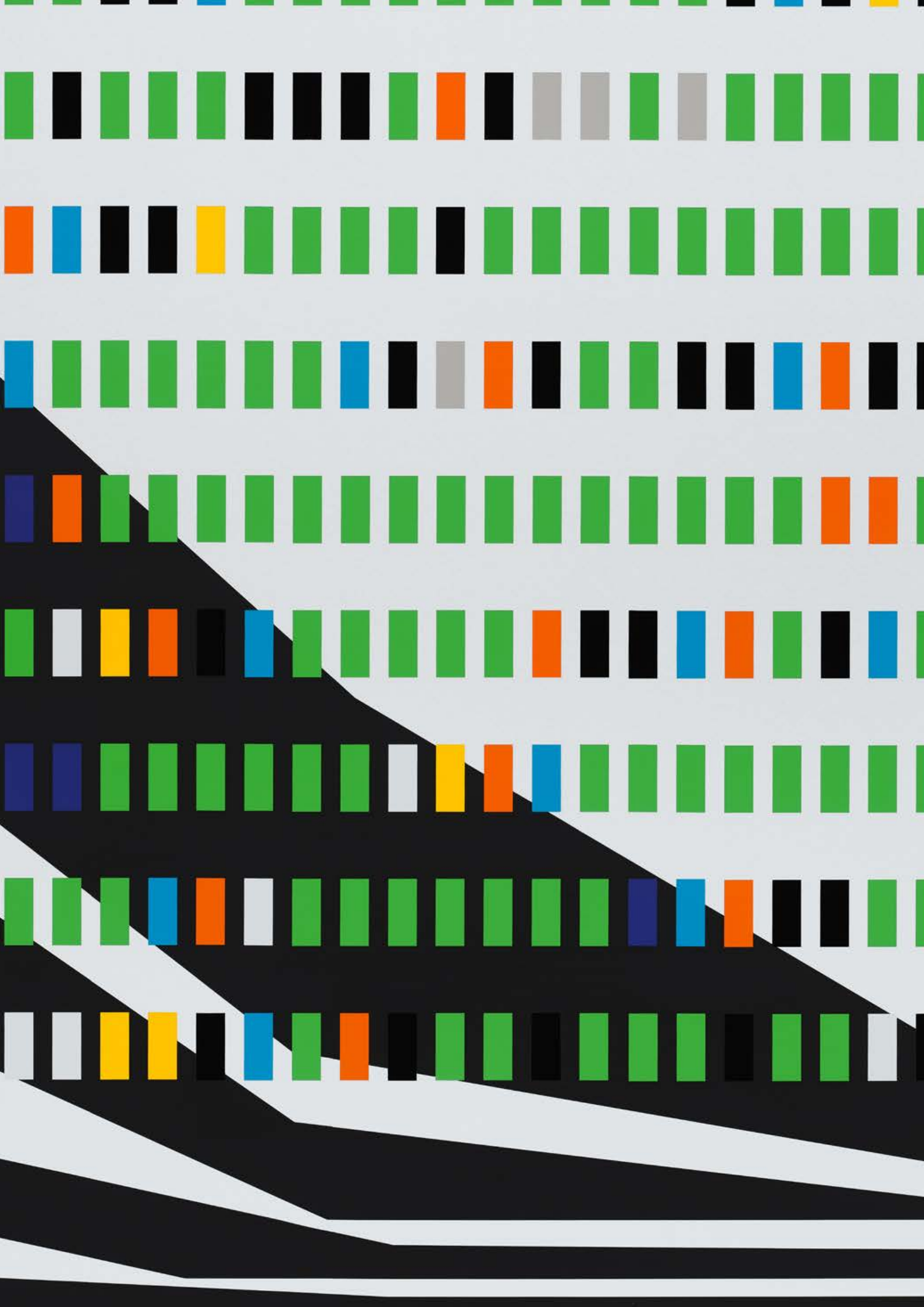
2025

Household gloss paint on canvas

207 × 152.5 cm | 81 ½ × 60 ⅞ in.

USD 155,000 *plus applicable taxes*





GALLERY EXHIBITIONS



Richard Hunt
Metamorphosis – A Retrospective

25 April – 29 June 2025
Bermondsey, London



Antony Gormley
WITNESS: Early Lead Works

23 April – 8 June 2025
Mason's Yard, London

INTIMATE VISIONS

CURATED BY
CLÉMANDE BURGEVIN BLACHMAN
AND MATHIEU PARIS

Intimate Visions

7 March – 10 May 2025
Paris



Ilana Savdie
Glottal Stop

2 May – 14 June 2025
New York



Alex Carver
Effigy

25 April – 14 June 2025
Seoul



Lynne Drexler
The Seventies

26 March – 17 May 2025
Hong Kong

GALLERY INFORMATION

BERMONDSEY, LONDON

144 – 152 Bermondsey Street
London SE1 3TQ
+44 (0) 207 930 5373

Opening Times:
Tuesday – Saturday, 10am – 6pm
Sunday, 12 – 6pm

MASON'S YARD, LONDON

25 – 26 Mason's Yard
London SW1Y 6BU
+44 (0) 207 766 3550

Opening Times:
Tuesday – Saturday, 10am – 6pm

PARIS

10 avenue Matignon
75008 Paris
+33 (0) 1 87 39 85 97
By appointment

Opening Times:
Tuesday – Saturday,
10am – 12.30pm, 1.30 – 6pm

NEW YORK

1002 Madison Avenue
New York, NY 10075
+1 212 750 4232

Opening Times:
Tuesday – Saturday, 10am – 6pm

HONG KONG

50 Connaught Road Central
Hong Kong
+ 852 2592 2000

Opening Times:
Tuesday – Saturday, 11am – 7pm

SEOUL

6, Dosan-daero 45-gil
Seoul
+82 (0) 2 6438 9093

Opening Times:
Tuesday – Saturday, 10am – 6pm