

WHITE CUBE

ART BASEL

17 – 22 June 2025

ALIA AHMAD
JOSEF ALBERS
MICHAEL ARMITAGE
GEORG BASELITZ
ENRICO DAVID
PETER DOIG
LYNNE DREXLER
TRACEY EMIN
THEASTER GATES
SAM GILLIAM
ANTONY GORMLEY
CAI GUO-QIANG
DAVID HAMMONS
MONA HATOUM
DAMIEN HIRST
MARGUERITE HUMEAU

RICHARD HUNT
ROBERT IRWIN
IBRAHIM MAHAMA
CHRISTIAN MARCLAY
TIONA NEKKIA MCCLODDEN
JULIE MEHRETU
ISAMU NOGUCHI
LYGIA PAPE
PARK SEO-BO
A.R. PENCK
MARINA RHEINGANTZ
KAZUO SHIRAGA
TARWUK
DANH VO
JEFF WALL

C13
Messe Basel
Messeplatz 10
4058 Basel
Switzerland

ART UNLIMITED
DANH VO

In God We Trust
2020

Thirteen mild steel stars (each: 52 × 52 × 30 cm) and wood logs
Overall dimensions variable

EUR 250,000 *plus applicable taxes*



Danh Vo's monumental installation *In God We Trust* is included in Art Basel's Unlimited section at U30, opening 16 June 2025. To read more about this work and our presentation at Unlimited, click [HERE](#).





MICHAEL ARMITAGE

In the garden

2015

Oil on Lubugo bark cloth

195.5 × 149.5 cm | 76 ¹⁵/₁₆ × 58 ⁷/₈ in.

197.9 × 151.9 × 4.9 cm | 77 ¹⁵/₁₆ × 59 ¹³/₁₆ × 1 ¹⁵/₁₆ in. (framed)

Price upon application

Click [HERE](#) to view a video of this work



Michael Armitage will be featured in White Cube Bermondsey's upcoming summer group show 'Alien Shores', opening 9 July 2025.



PETER DOIG

Hill Houses (Green Version)

1991

Oil on canvas

133.4 × 208.6 cm | 52 ½ × 82 ⅞ in.

135.5 × 210.6 x 5.1 cm | 53 ⅜ × 82 ⅞ × 2 in. (framed)

Price upon application

Click [HERE](#) to view a video of this work



This month's Salon features *Hill Houses (Green Version)*, a large oil on canvas by Peter Doig created in 1991.



ENRICO DAVID

Assumption of we

2014–25

Polymer plaster, graphite, stainless steel brackets and copper plated steel plinth with bronze patina

Edition of 3 and 1 AP

200 × 91 × 40 cm | 78 ³/₄ × 35 ¹³/₁₆ × 15 ³/₄ in.

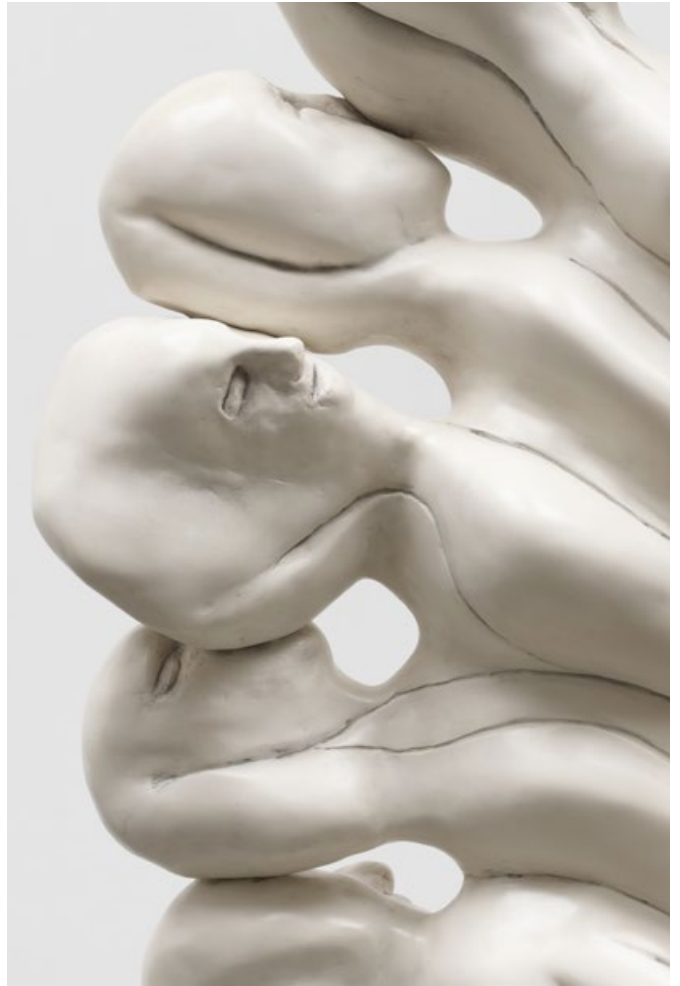
USD 200,000 *plus applicable taxes*

Click [HERE](#) to view a video of this work



Enrico David's first exhibition with the gallery will open in October 2025 at White Cube Paris, coinciding with a survey exhibition at Castello di Rivoli, Italy (29 October 2025 – 22 March 2026).





GEORG BASELITZ

Oh ho, siamo ritornati, am deutschen Wesen, Weltgenesungsbild
(*Oh ho, Siamo ritornati, through the German Spirit, World-Healing*
Image)

2023

Oil on canvas

305 × 480 cm | 120 $\frac{1}{16}$ × 189 in.

309 × 484 × 5 cm | 121 $\frac{5}{8}$ × 190 $\frac{9}{16}$ × 1 $\frac{15}{16}$ in. (framed)

EUR 2,200,000 *plus applicable taxes*

Click [HERE](#) to view a video of this work





KAZUO SHIRAGA

Chizosei Shomenko

1961

Oil on canvas

161.5 × 131 cm | 63 ³/₁₆ × 51 ³/₁₆ in.

163.7 × 133 × 5 cm | 64 ⁷/₁₆ × 52 ³/₈ × 1 ¹⁵/₁₆ in. (framed)

Price upon application

Click [HERE](#) to view a video of this work





ISAMU NOGUCHI

Pigeon

1988 (2024)

Bronze plate

Edition of 6 and 2 APs

150.8 × 93.7 × 27 cm | 59 ³/₈ × 36 ⁷/₈ × 10 ⁵/₈ in.

USD 275,000 *plus applicable taxes*



Some twenty-five sculptures and ceramics and over thirty light sculptures by the acclaimed Japanese American artist Isamu Noguchi (1904–1988) will be on view at the Rijksmuseum until 26 October 2025. Additionally, the Clark Center, Boston, opens a solo exhibition on 19 July 2025, 'Isamu Noguchi: Landscapes of Time'.



CAI GUO-QIANG

Red Birds

2022

Gunpowder on canvas

200 × 300 cm | 78 ¾ × 118 ⅞ in.

202.2 × 302.6 × 4.9 cm | 79 ⅝ × 119 ⅞ × 1 15⁄16 in. (framed)

USD 1,200,000 *plus applicable taxes*

Click [HERE](#) to view a video of this work



White Cube is pleased to present a new exhibition by internationally acclaimed artist Cai Guo-Qiang (b. 1957, Quanzhou, Fujian, China) at our Bermondsey gallery, coinciding with Frieze London. The exhibition opens on 26 September 2025. Click [HERE](#) for more information on the exhibition.



RICHARD HUNT

Horizontal Growing

2023

Welded bronze

82.5 × 153 × 71.1 cm | 32 ½ × 60 ¼ × 28 in.

Weight 48.5 kg | 107 lbs.

USD 350,000 *plus applicable taxes*



White Cube Bermondsey is pleased to present Richard Hunt's (1935–2023) first solo exhibition in the United Kingdom, open until 29 June 2025. Click [HERE](#) for more information on the exhibition.



DAVID HAMMONS

Untitled

2012

Acrylic and netting on linen

277.5 × 194.3 cm | 109 ¼ × 76 ½ in.

USD 4,000,000 *plus applicable taxes*

Click [HERE](#) to view a video of this work



David Hammons has been named a recipient of the 2025 Art Basel Award in the 'Icon' category. This newly established awards programme honours excellence across the contemporary art world, recognising practices that influence culture and help shape the future of art.



SAM GILLIAM

Matress

1972

Acrylic on canvas with beveled-edge stretcher

110.5 × 133.4 × 7.6 cm | 43 ½ × 52 ½ × 3 in.

USD 975,000 *plus applicable taxes*





JULIE MEHRETU

Untitled

2000

Gouache and ink on vellum and paper collage with pins

48 × 60.7 cm | 18 ⁷/₈ × 23 ⁷/₈ in.

52.6 × 62.4 × 3.6 cm | 20 ¹/₁₆ × 24 ⁹/₁₆ × 1 ⁷/₁₆ in. (framed)

USD 450,000 *plus applicable taxes*



An exhibition of works by Julie Mehretu is open at the Kunstsammlung Nordrhein-Westfalen until 12 October 2025. Titled 'KAİROS / Hauntological Variations', the exhibition is the artist's first mid-career survey in Germany, presenting nearly 100 works in the museum's K21 Ständehaus space.



TRACEY EMIN

Coming Down From Love

2024

Bronze

Edition of 6

60 × 161 × 76 cm | 23 ⁵/₈ × 63 ³/₈ × 29 ¹⁵/₁₆ in.

GBP 375,000 *plus applicable taxes*



Tracey Emin has two major solo exhibitions open in 2025 – one at Fondazione Palazzo Strozzi in Florence, Italy, until 20 July, and the other at the Yale Center for British Art in New Haven, Connecticut, open until 10 August.



LYNNE DREXLER

Hovering Sentinals [sic]

1963

Oil on canvas

171.8 × 124.8 cm | 67 ⁵/₈ × 49 ¹/₈ in.

175.9 × 128.6 × 5.7 cm | 69 ¹/₄ × 50 ⁵/₈ × 2 ¹/₄ in. (framed)

USD 975,000 *plus applicable taxes*

Click [HERE](#) to view a video of this work



TIONA NEKKIA MCCLODDEN

NEVER LET ME GO | XIX. eye of the storm
2024

Black jute rope, leather, leather dye and Saphir shoe polish
123.2 × 62.2 × 7 cm | 48 ½ × 24 ½ × 2 ¾ in.

USD 75,000 *plus applicable taxes*



Opening 2 September 2025, debuting a new body of work, White Cube New York is pleased to present 'PURE GAZE', an exhibition featuring 15 sculptural paintings from Tiona Nekkia McClodden's ongoing series 'NEVER LET ME GO', initiated in 2023.

MARGUERITE HUMEAU

Superior Oneness, A 70-year-old female human has ingested an alligator's brain

2018

Bronze

Edition of 5 and 1 AP

144 × 40 × 40 cm | 56 1¹/₆ × 15 3³/₄ × 15 3³/₄ in.

GBP 80,000 *plus applicable taxes*



Marguerite Humeau's first presentation in Scandinavia, 'Torches', is on view at ARKEN Museum of Modern Art, Denmark, until 19 October 2025. The exhibition invites visitors into an immersive, resonant world where Humeau's organic, sculptural works are brought to life through light and sound.



DANH VO

Untitled

2024

1st–2nd-century CE Roman marble right leg and Rimowa luggage

55 × 30 × 41 cm | 21 ⁵/₈ × 11 ¹³/₁₆ × 16 ¹/₈ in.

EUR 325,000 *plus applicable taxes*





GEORG BASELITZ

Zimmer mit Frühstück

2021

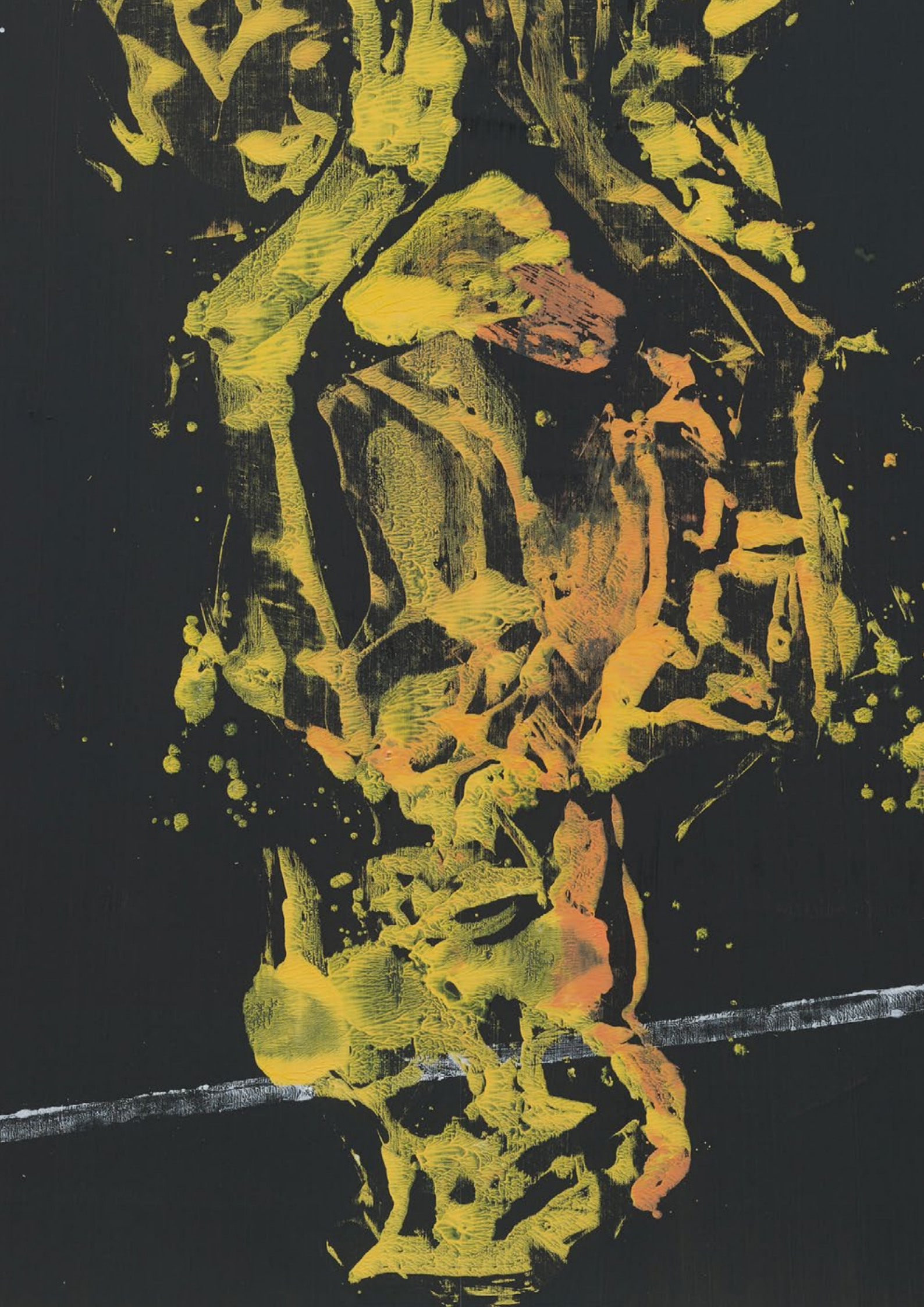
Oil on canvas

250 × 200 cm | 98 ⁷/₁₆ × 78 ³/₄ in.

261 × 211 × 11 cm | 102 ³/₄ × 83 ¹/₆ × 4 ⁵/₁₆ in. (framed)

EUR 1,350,000 *plus applicable taxes*





ANTONY GORMLEY

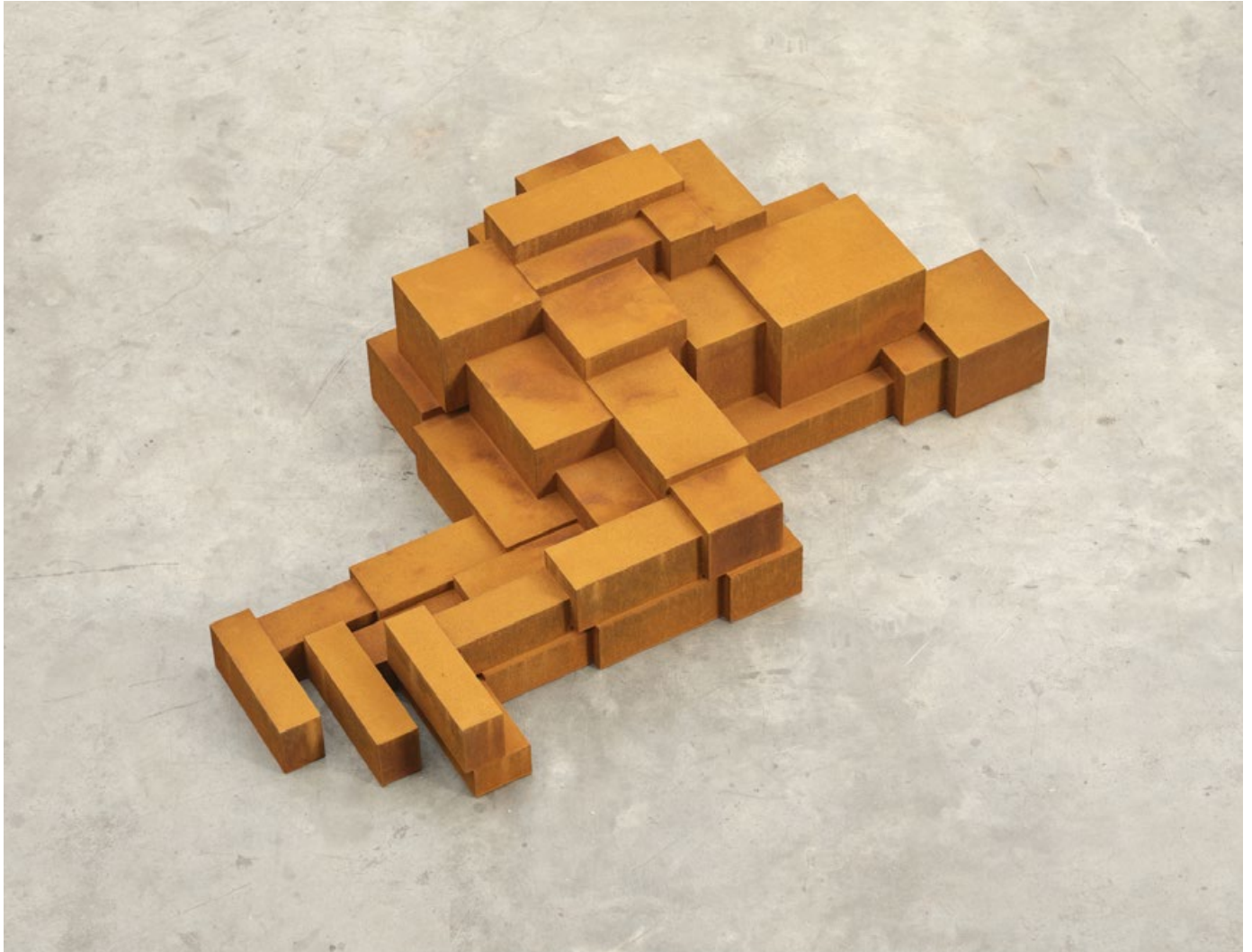
COUNCIL

2021

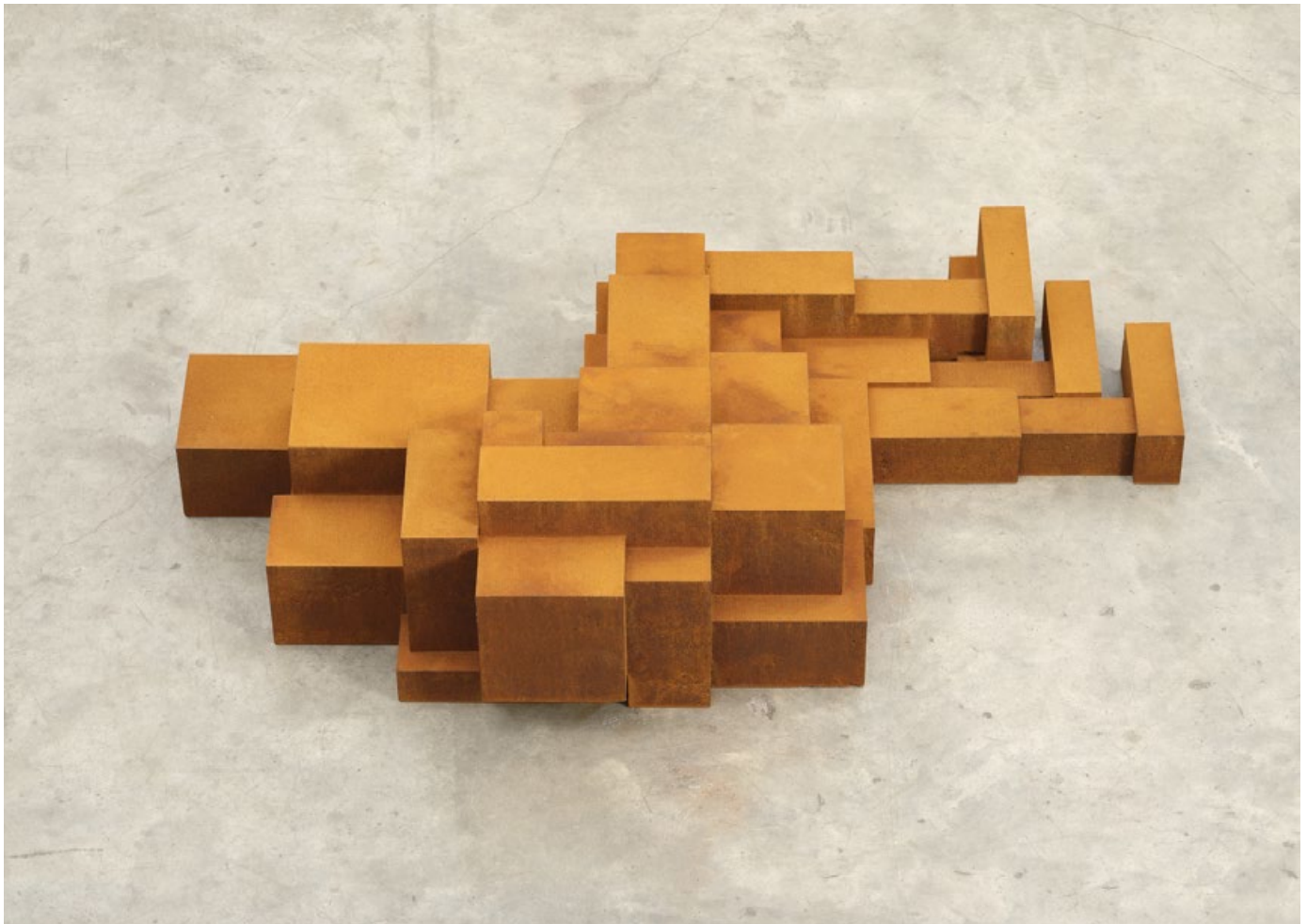
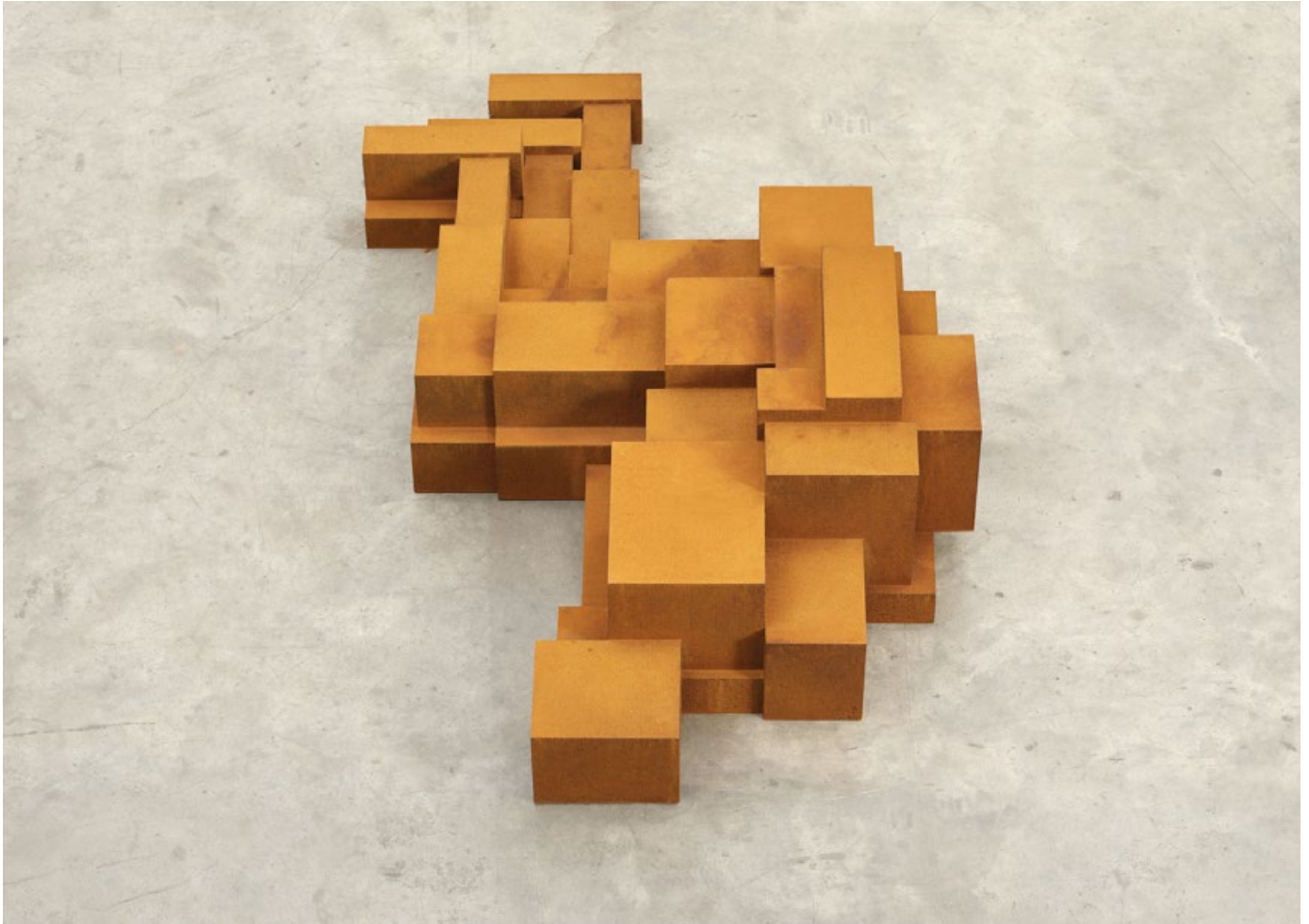
Cast iron

35.3 × 85 × 150.6 cm | 13 ⁷/₈ × 33 ⁷/₁₆ × 59 ⁵/₁₆ in.

GBP 750,000 *plus applicable taxes*



Opening on 20 June 2025, Museum SAN, South Korea, will be showing a solo show of Antony Gormley's work. Additionally, 'SURVEY: Antony Gormley', the first major museum exhibition of Gormley's work in the United States, will open in September 2025 at the Nasher Sculpture Center, Dallas.



LYGIA PAPE

Desenho (Drawing)

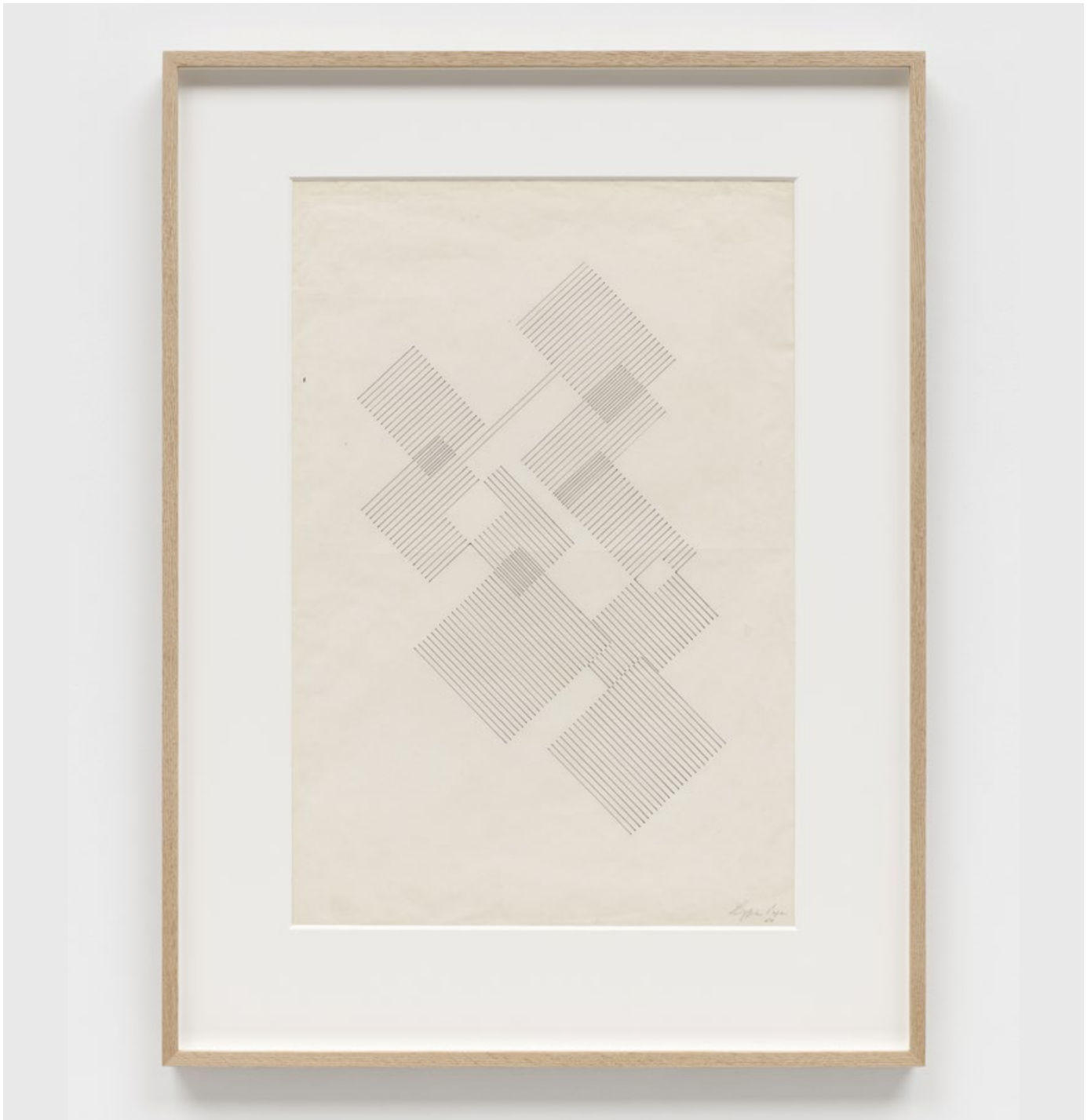
1960

Ink on Japanese paper

65.5 × 44.5 cm | 25 ¹³/₁₆ × 17 ¹/₂ in.

86.5 × 65 × 4 cm | 34 ¹/₁₆ × 25 ⁹/₁₆ × 1 ⁹/₁₆ in. (framed)

USD 240,000 *plus applicable taxes*



The Pinault Collection have recently announced their upcoming Lygia Pape (1927-2004) solo exhibition, titled 'Lygia Pape. Weaving Space', opening 10 September 2025 at the Bourse de Commerce in Paris.

JEFF WALL

Diagonal Composition no. 2

1998

Transparency in lightbox

Edition of 8 and 2 APs

52.2 × 64 cm | 20 ⁹/₁₆ × 25 ³/₁₆ in.

64 × 75 × 14 cm | 25 ³/₁₆ × 29 ¹/₂ × 5 ¹/₂ in. (framed)

USD 325,000 *plus applicable taxes*



PARK SEO-BO

Ecriture No. 31-77-78

1978

Pencil and oil on canvas

130 × 162 cm | 51 ³/₁₆ × 63 ³/₄ in.

USD 1,500,000 *plus applicable taxes*



JOSEF ALBERS

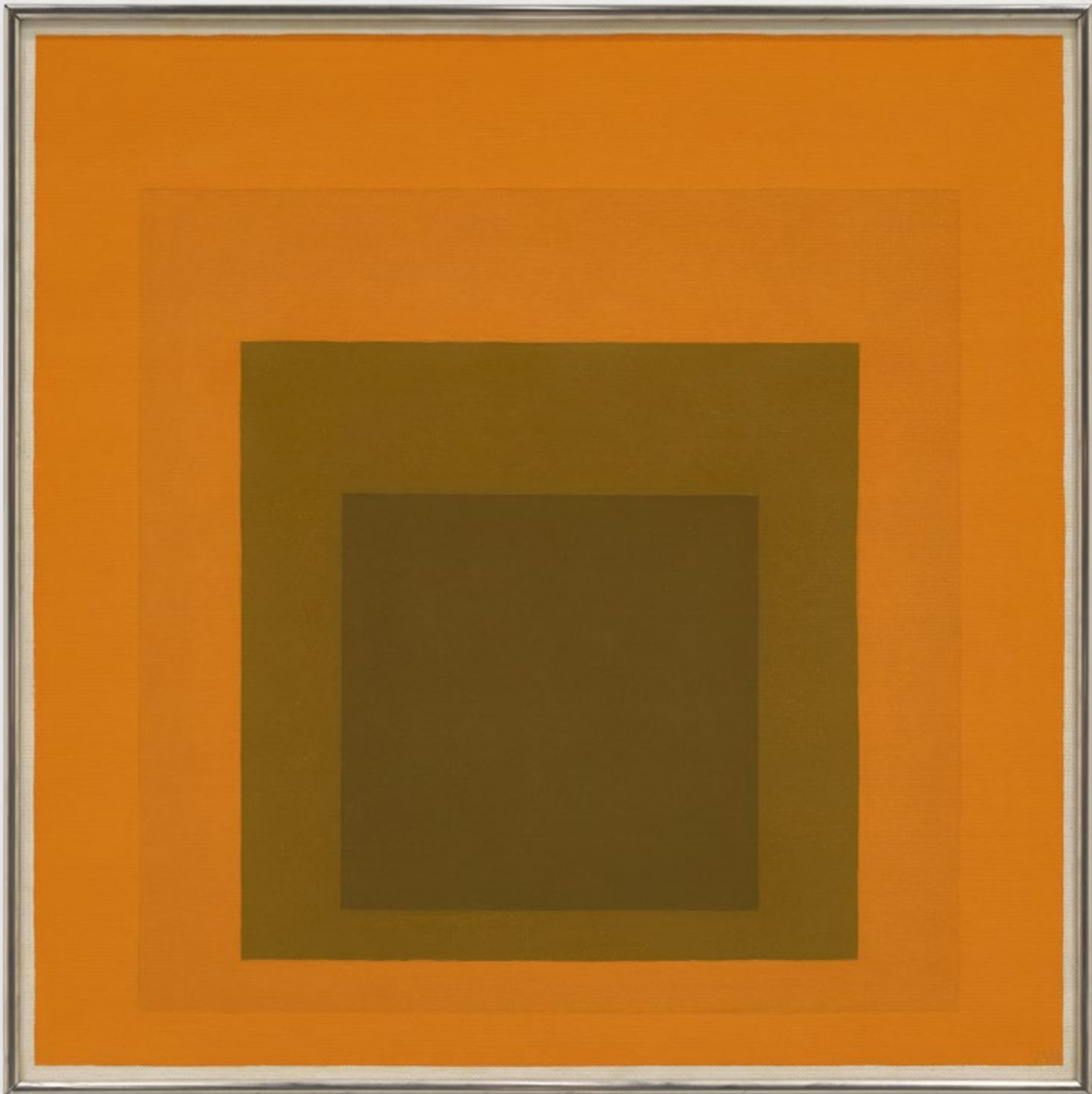
Study for Homage to the Square: Dark Core
1964

Oil on Masonite

76.2 × 76.2 cm | 30 × 30 in.

77.5 × 77.5 × 3.4 cm | 30 ½ × 30 ½ × 1 ⅝ in. (framed)

EUR 875,000 *plus applicable taxes*



THEASTER GATES

Flag

2012

Decommissioned fire hose

149.9 × 241.3 × 10.2 cm | 59 × 95 × 4 in.

USD 1,250,000 *plus applicable taxes*

Click [HERE](#) to view a video of this work



The Smart Museum of Art presents 'Theaster Gates: Unto Thee', Gates's first solo museum exhibition in his hometown of Chicago, opening 23 September 2025.



THEASTER GATES

Orb (Wharlest Jackson)

2023

High fire stoneware and manganese dioxide on marble plinth

Vessel: 60.5 × 59 × 50.5 cm | 23 ¹³/₁₆ × 23 ¹/₄ × 19 ⁷/₈ in.

Plinth: 11 × 58.4 × 41.6 cm | 4 ⁵/₁₆ × 23 × 16 ³/₈ in.

USD 225,000 *plus applicable taxes*





MARINA RHEINGANTZ

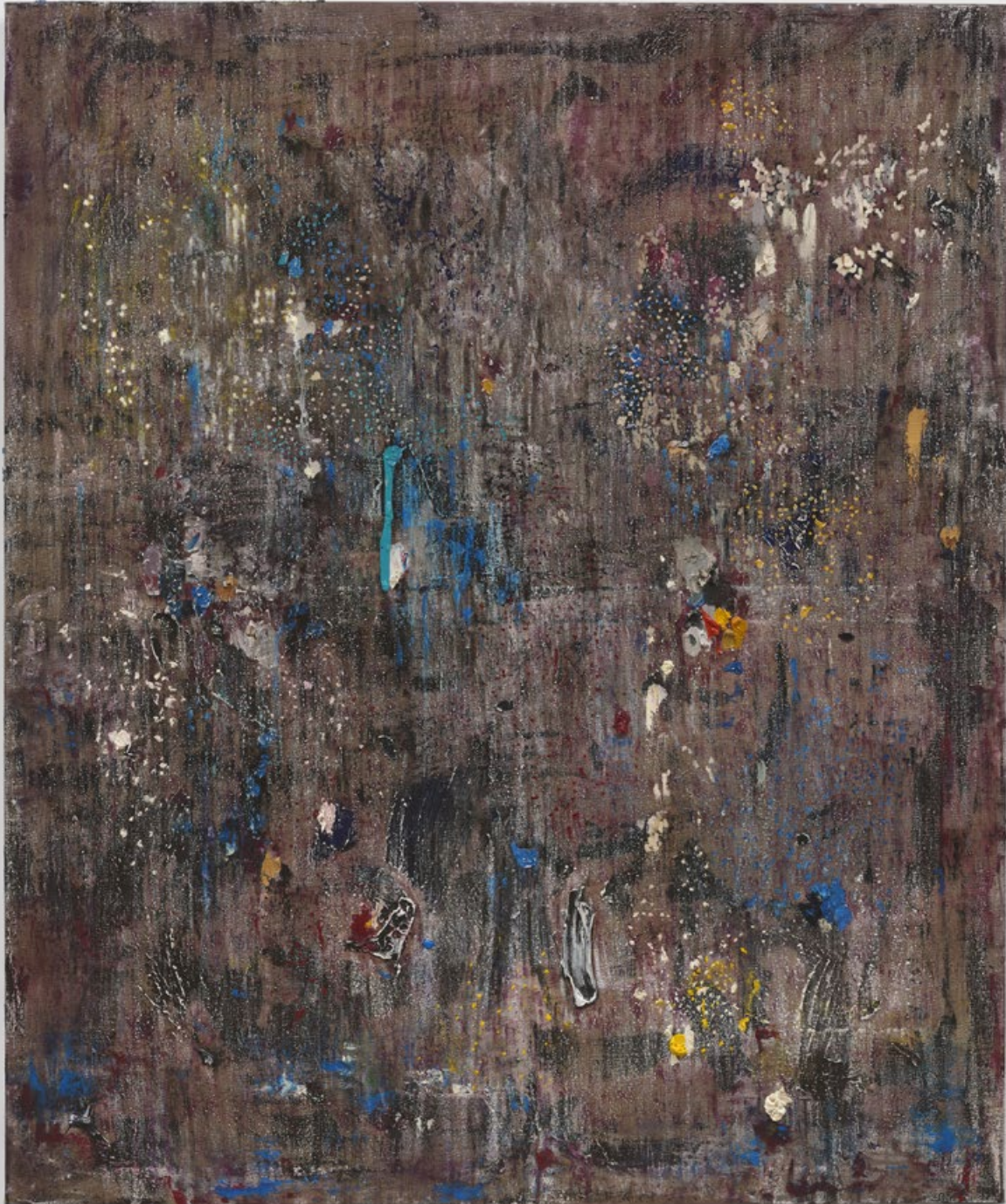
Ladybird

2025

Oil on linen

180 × 150 × 4 cm | 70 ⁷/₈ × 59 ¹/₁₆ × 1 ¹/₁₆ in.

USD 170,000 *plus applicable taxes*



Marina Rheingantz will be participating in the White Cube Bermondsey summer exhibition 'Alien Shores', opening on 9 July 2025. Click [HERE](#) for more information on the exhibition.

IBRAHIM MAHAMA

Kumwensia

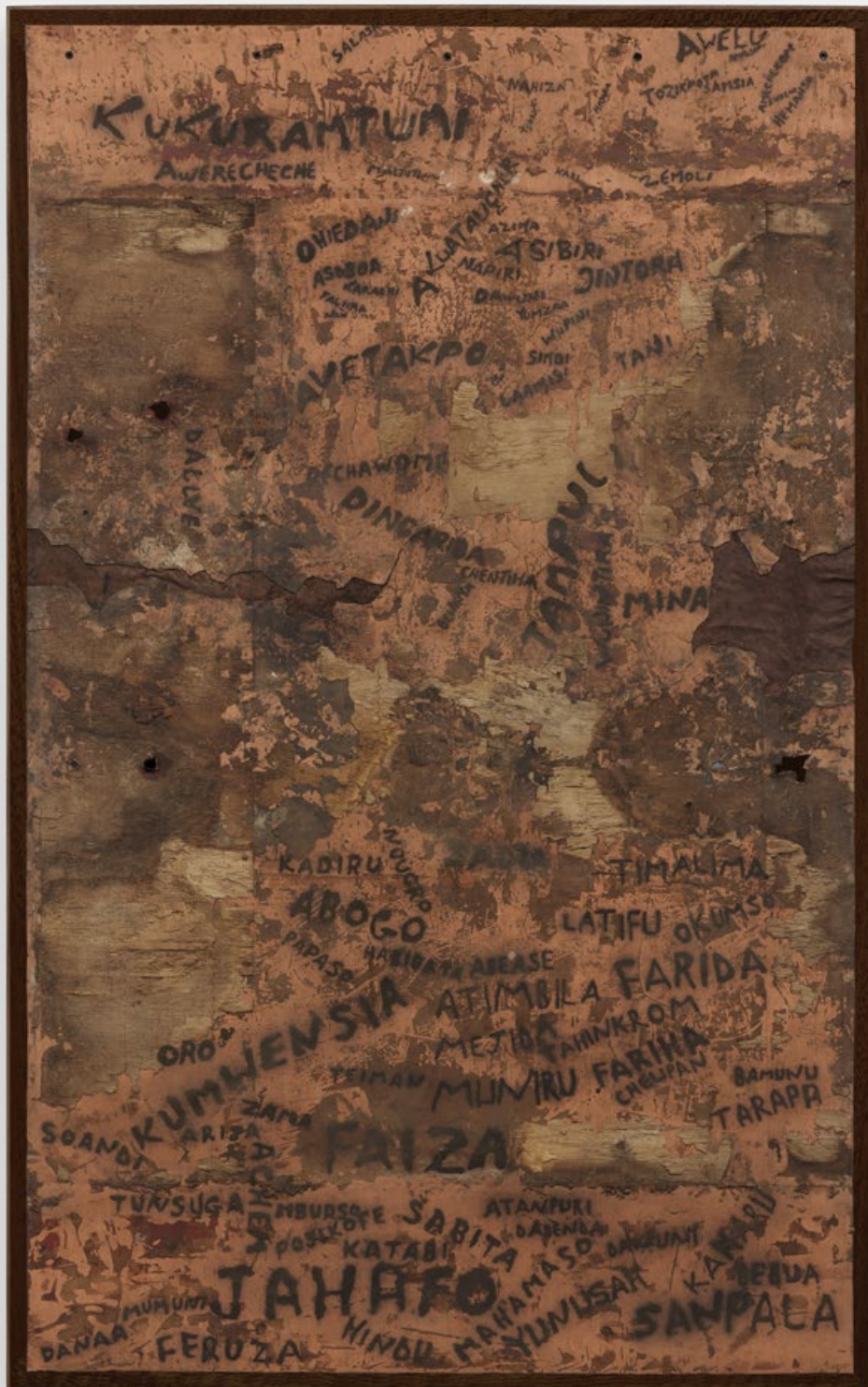
2023–24

Carbon tattoo on leather, vinyl and wood

314.7 × 195 cm | 123 7/8 × 76 3/4 in.

324.1 × 204.4 × 4.5 cm | 127 5/8 × 80 1/2 × 1 3/4 in. (framed)

EUR 100,000 *plus applicable taxes*



ALIA AHMAD

Drifter 2 / درخّل ۲

2025

Oil on canvas

200 × 200 cm | 78 ³/₄ × 78 ³/₄ in.

203.6 × 203.6 × 5.6 cm | 80 ³/₁₆ × 80 ³/₁₆ × 2 ³/₁₆ in. (framed)

USD 125,000 *plus applicable taxes*



MONA HATOUM

Inside Out (concrete)

2019

Concrete and resin

Edition of 6 and 2 APs

Diameter: 86 cm | 33 7/8 in.

GBP 140,000 *plus applicable taxes*



Opening at the Barbican, London, 3 September 2025, works by Mona Hatoum and 20th-century sculptor Alberto Giacometti will be seen together for the first time in the groundbreaking exhibition, part of 'Encounters: Giacometti'.



TARWUK

MRTISKLAAH_A.A_elbuoD_stl_dna_retaehT_ehT
2024

Oil and charcoal on canvas

243.8 × 182.9 cm | 96 × 72 in.

246.2 × 185.4 × 5 cm | 96 ¹⁵/₁₆ × 73 × 1 ¹⁵/₁₆ in. (framed)

USD 100,000 *plus applicable taxes*





A.R. PENCK

Die Spaltung des R-Problems 3

1983

Synthetic resin on canvas

147.5 × 147.5 cm | 58 1/8 × 58 1/8 in.

150 × 150 × 5 cm | 59 1/8 × 59 1/8 × 1 15/16 in. (framed)

EUR 475,000 *plus applicable taxes*





DAMIEN HIRST

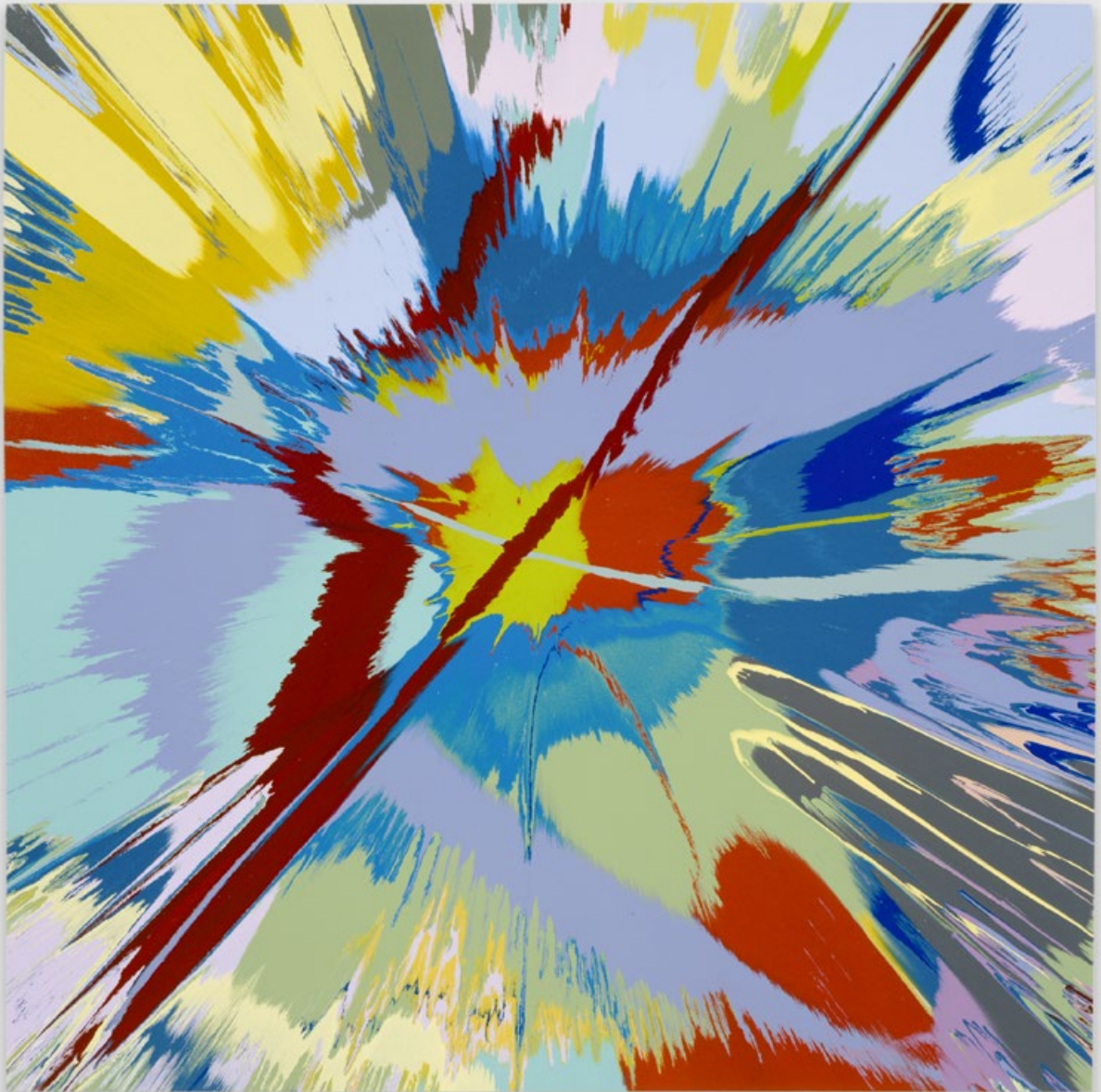
Beautiful Whimsical Painting

2007

Gloss household paint on canvas

121.9 × 121.9 cm | 48 × 48 in.

USD 300,000 *plus applicable taxes*



The Albertina Modern, Vienna is currently presenting the first museum exhibition dedicated to Damien Hirst's works on paper, on view until 12 October 2025.

ROBERT IRWIN

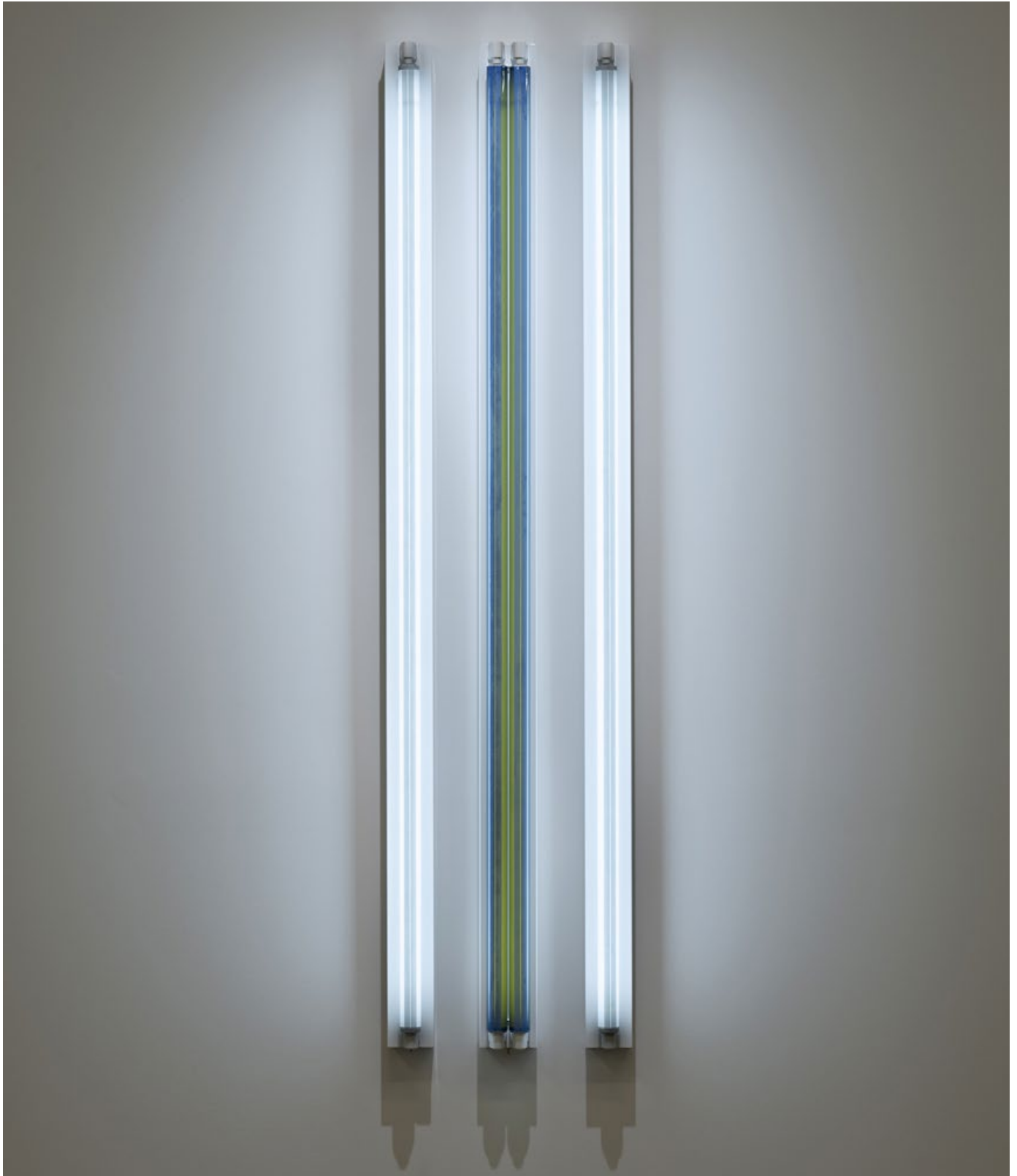
#3 x 6' D - Four Fold

2015

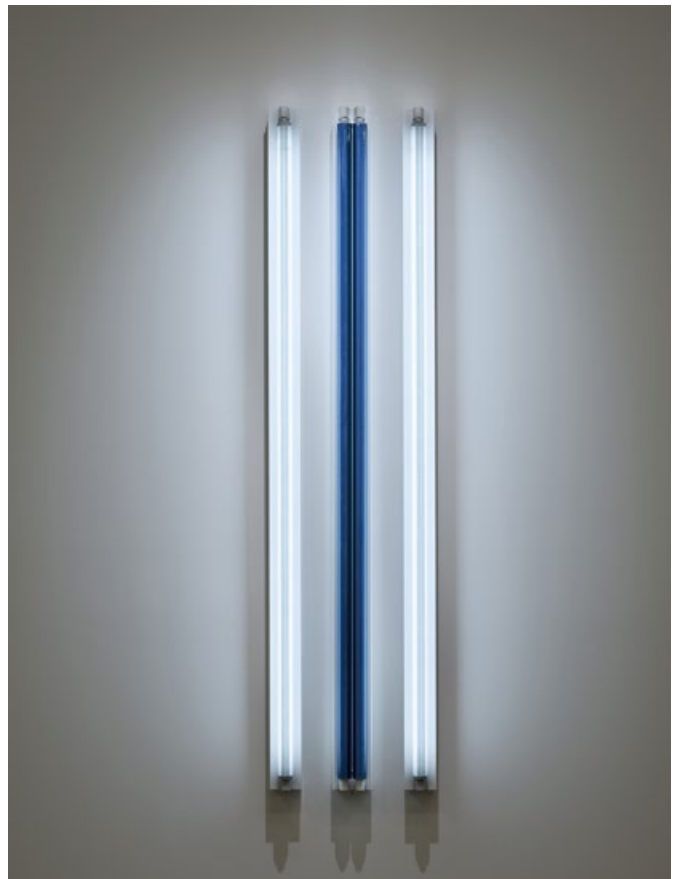
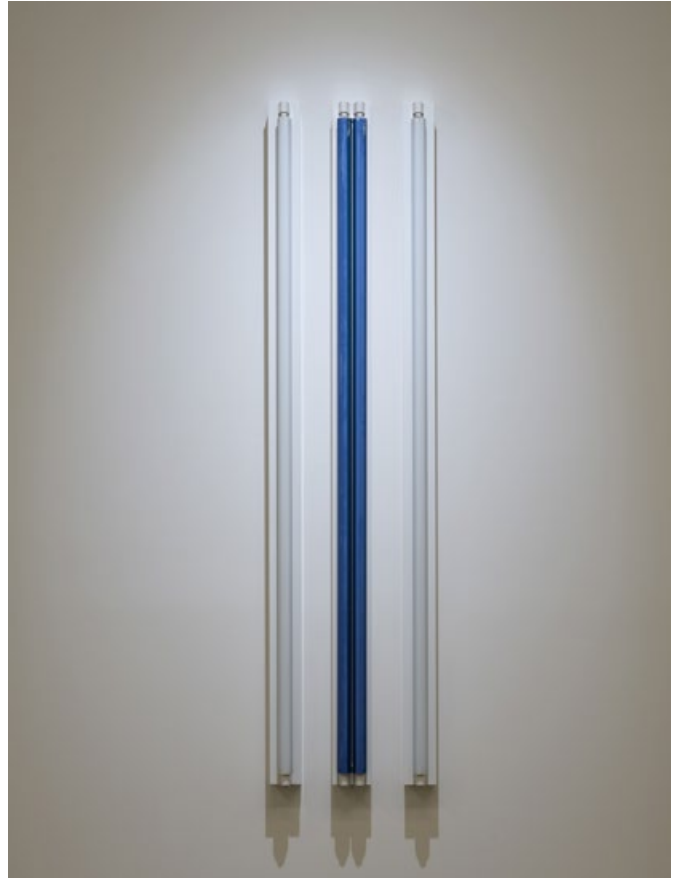
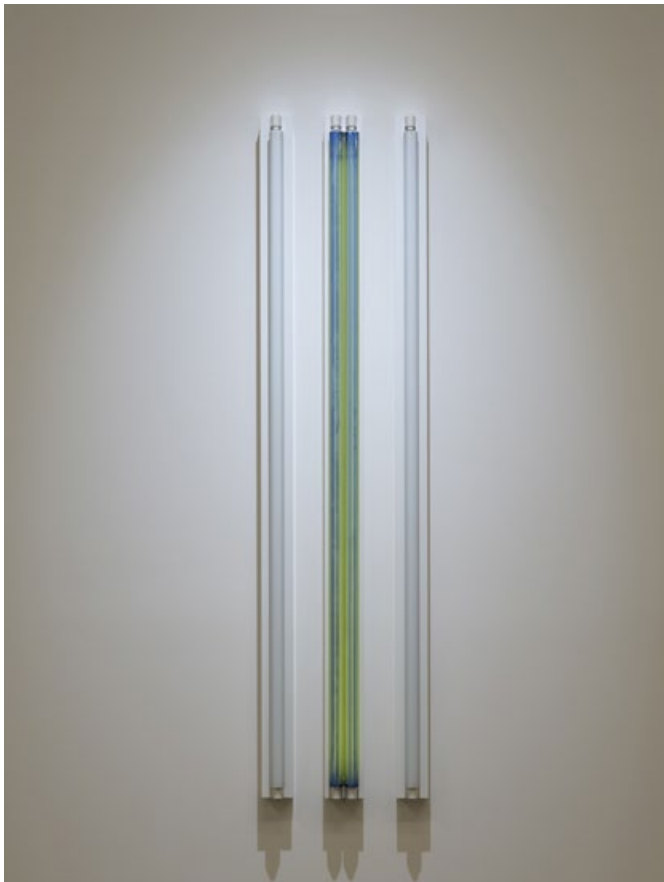
Light + Shadow + Reflection + Color

182.9 × 43.8 × 10.8 cm | 72 × 17 ¼ × 4 ¼ in.

USD 300,000 *plus applicable taxes*



Marking the final exhibition conceived by Robert Irwin before his passing at the age of 95, the presentation at White Cube Paris brings together 8 wall-based fluorescent works and a monumental sculpture made during the artist's final decade, open until 19 July 2025. Click [HERE](#) for more information on the exhibition.



CHRISTIAN MARCLAY

Actions: Froosh Sploosh Wooosh Sskuusshh Splat Blortch (No.2)
2014

Screen print and acrylic on canvas
222.2 × 302.5 cm | 87 ½ × 119 ⅛ in.

USD 345,000 *plus applicable taxes*





GALLERY EXHIBITIONS



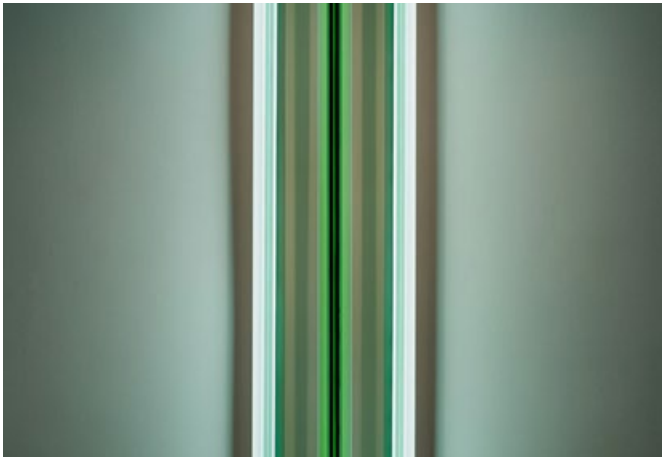
Richard Hunt
Metamorphosis – A Retrospective

25 April – 29 June 2025
Bermondsey, London



Antony Gormley
WITNESS: Early Lead Works

23 April – 8 June 2025
Mason's Yard, London



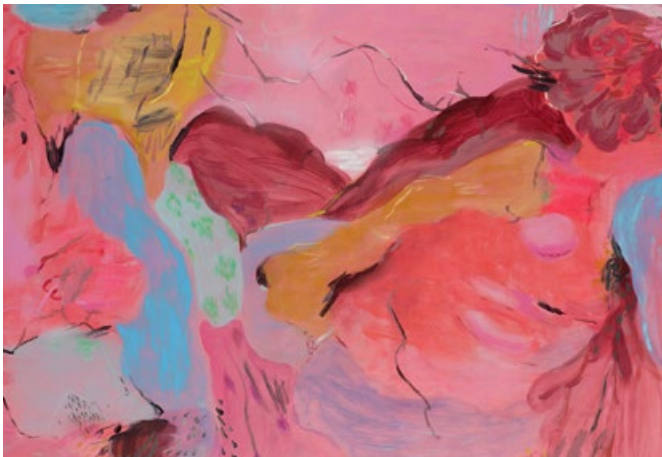
Robert Irwin

21 May – 19 July 2025
Paris



Ilana Savdie

2 May – 14 June 2025
New York



Zhou Li

26 June – 9 August 2025
Seoul



Salvatore Emblema

28 May – 5 July 2025
Hong Kong

GALLERY INFORMATION

BERMONDSEY, LONDON

144 – 152 Bermondsey Street
London SE1 3TQ
+44 (0) 207 930 5373

Opening Times:
Tuesday – Saturday, 10am – 6pm
Sunday, 12 – 6pm

MASON'S YARD, LONDON

25 – 26 Mason's Yard
London SW1Y 6BU
+44 (0) 207 766 3550

Opening Times:
Tuesday – Saturday, 10am – 6pm

PARIS

10 avenue Matignon
75008 Paris
+33 (0) 1 87 39 85 97
By appointment

Opening Times:
Tuesday – Saturday,
10am – 12.30pm, 1.30 – 6pm

NEW YORK

1002 Madison Avenue
New York, NY 10075
+1 212 750 4232

Opening Times:
Tuesday – Saturday, 10am – 6pm

HONG KONG

50 Connaught Road Central
Hong Kong
+ 852 2592 2000

Opening Times:
Tuesday – Saturday, 11am – 7pm

SEOUL

6, Dosan-daero 45-gil
Seoul
+82 (0) 2 6438 9093

Opening Times:
Tuesday – Saturday, 10am – 6pm