

The background is a painting by Josh Lilley. It depicts a night scene. In the foreground, dark, silhouetted tree branches frame the view. To the right, a waterfall flows down a dark, rocky cliff into a pool of water. In the middle ground, a small town with brightly lit windows and roofs sits on a hill across a body of water. The sky is a deep blue, filled with numerous small white stars and a large, bright full moon at the top center. The overall style is painterly and atmospheric.

Josh Lilley

Art Basel Hong Kong

3C27

26 - 30 March, 2025

Autumn Wallace
Ryan Mosley
Rebecca Manson
Sam Messer
Timothy Lai
Tom Anholt
William Wright

Art Basel Hong Kong

Convention & Exhibition Centre

3C27

26 - 30 March, 2025

For Art Basel Hong Kong 2025, Josh Lilley is pleased to present a selection of new works from across the gallery's international programme, featuring fresh contributions by Tom Anholt, Timothy Lai, Rebecca Manson, Sam Messer, Ryan Mosley, Autumn Wallace and William Wright.

Timothy Lai will exhibit new meditations on vulnerability and silence with his heavily impastoed, vivid scenes of charged domesticity (b. 1987, Kelantan, Malaysia). This presentation marks the artist's return to Hong Kong after his solo exhibition at the Longlati Foundation in 2022. His work is held in the permanent collection there, as well as MWood's Museum, Beijing and ILHAM Gallery, Kuala Lumpur.

Lai's compositions of frenetic gestural brushwork will be countered by the controlled considerations of William Wright (b.1971, London, United Kingdom). Wright joined the gallery in January 2025 after his inaugural solo exhibition in November 2024, *The Wreathed Trellis*. His paintings and works on paper meticulously explore and archive the items that populate his studio and home. From fruit to flowers, open windows to stubbed cigarettes, Wright's chosen subjects map a steady record of observation, the passing of time. Expanding on the theme of still-life painting Sam Messer (b. 1955, Brooklyn, NY) will showcase examples from his influential and ongoing series of typewriter studies. Through the devoted development of this single, recurring motif, Messer considers the act of ritualistically reproducing and disseminating language through a single device, anthropomorphising his subject to the point of portraiture.

A series of four, intimate new paintings by Autumn Wallace (b. 1996, Philadelphia, USA) is also included in the presentation. Wallace's practice examines myth, gender, sexuality and the Black femme experience, drawing on a diverse range of material and research. In these carefully crafted new miniature works, Wallace produces eclectic, unique stories and characters to create alternative narratives, examining the ways in which Black women navigate identity and power.

A new painting by Ryan Mosley (b. 1980, Chesterfield, UK) demonstrates masterful magical realism; a single figure amidst distant, shimmering waters. Mosley's characters inhabit a world of myth and fable, where dreamlike environments provide no fixed history or geography. Similarly steeped in the language of Romanticism and Expressionism is painter Tom Anholt (b. 1987, Bath, UK), who's spectra of lunar hues will accompany Mosley's glittering sunlight. Anholt's works often depict figures subsumed within a mighty panorama, wanderers both in communion with nature and at its mercy. Anholt's work is held in the MWood's Museum and K11 Foundation collections.

Following her 2024 solo presentation at The Modern Art Museum of Fort Worth, Rebecca Manson (b. 1989, New York, USA) will include a new large-scale ceramic moth wing, a marvel of dancing form and technical innovation. Manson's sculptures knead together the touchstones of suburban childhood with the language of memento mori, forming new symbolism for innocence and experience.

Josh Lilley



Timothy Lai
A Place You Can't Follow, 2025
Oil on canvas
122 x 152 cm
48 x 60 inches
(JL-005803-TL)

\$ 30,000 ex tax





Josh Lilley



Timothy Lai
Dog and Figure, 2025
Oil on canvas
122 x 152 cm
48 x 60 inches
(JL-005804-TL)

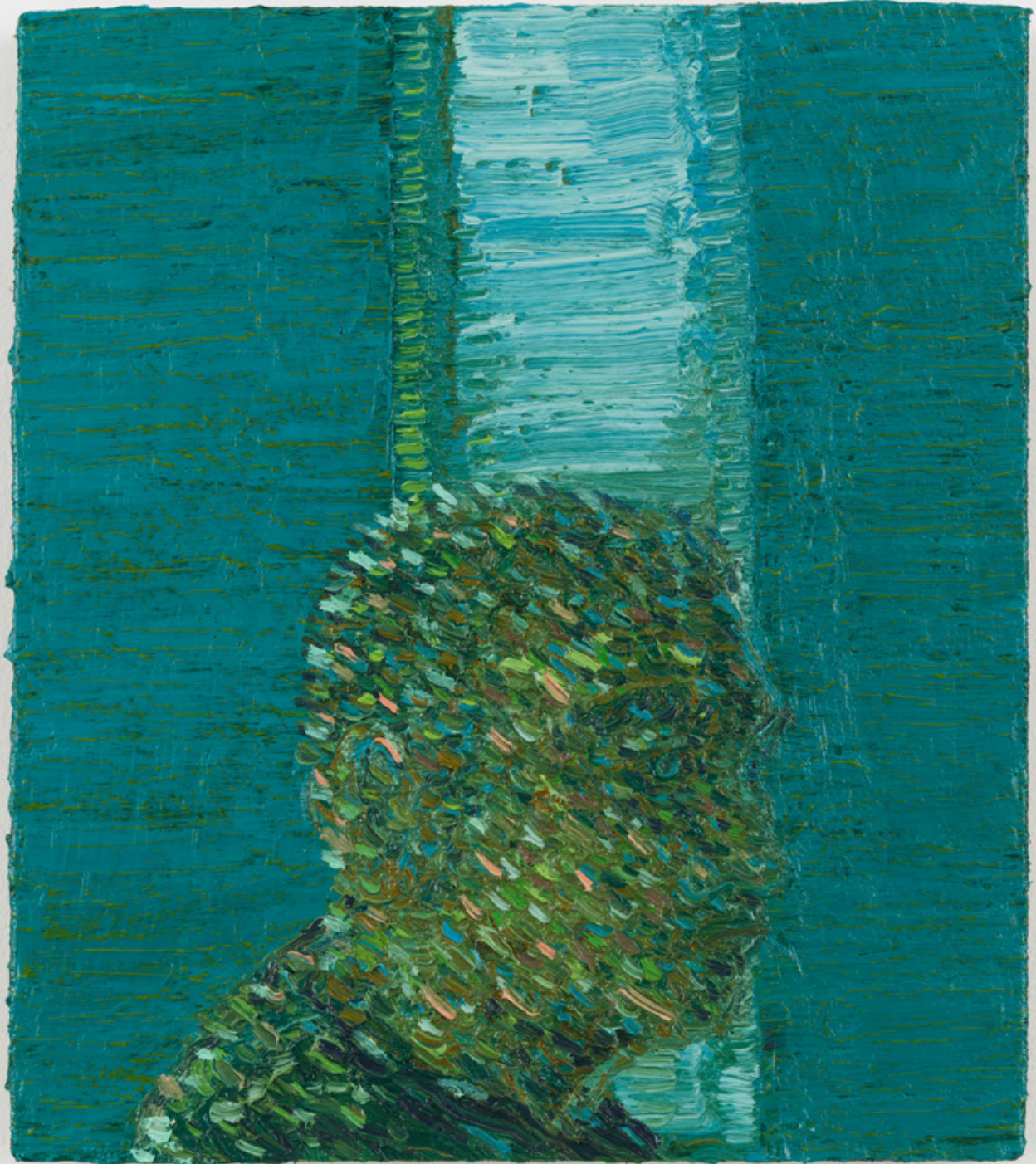
\$ 30,000 ex tax



Josh Lilley

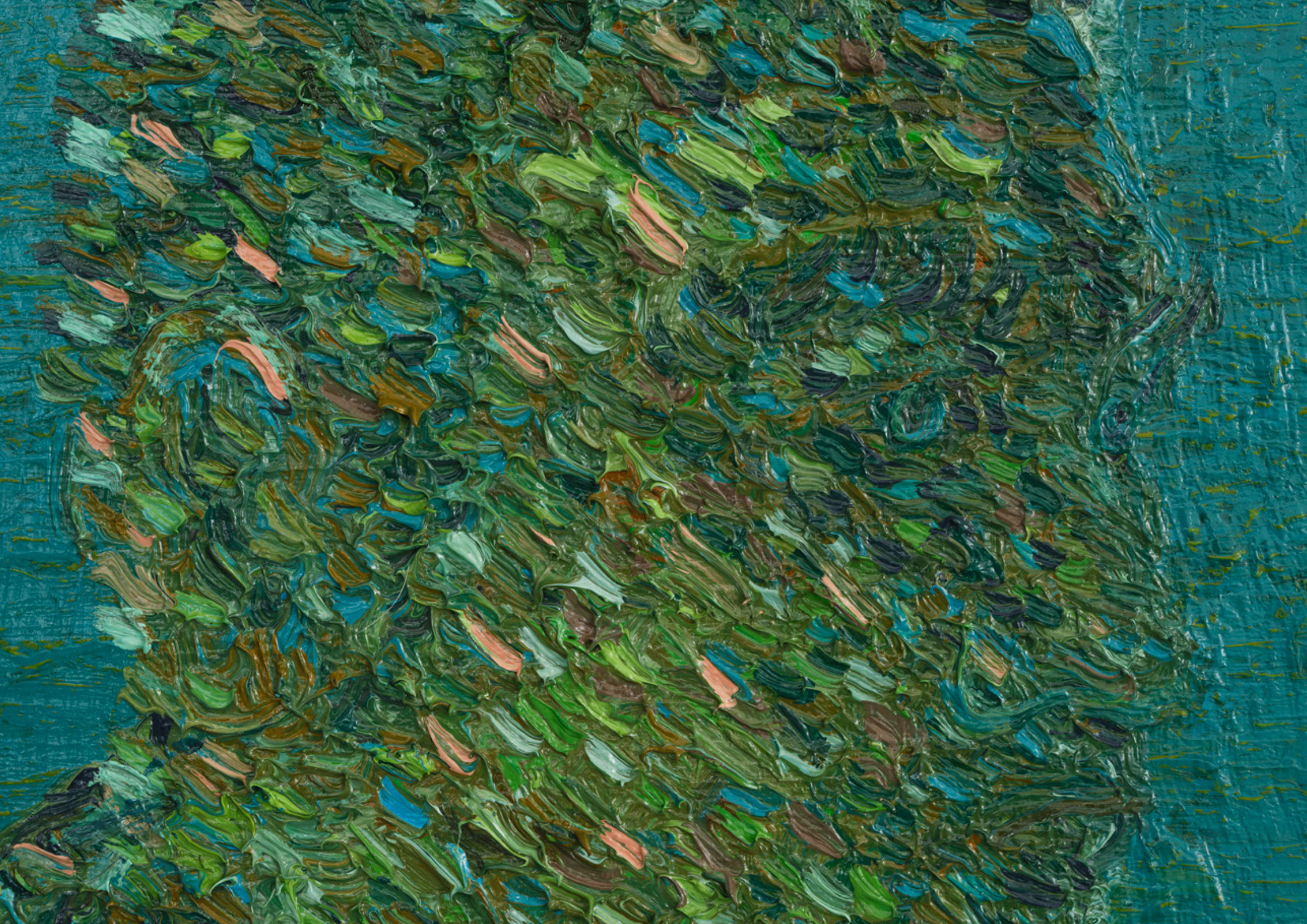


Josh Lilley



Timothy Lai
Portrait, 2025
Oil on linen
41 x 36 cm
16 x 14 inches
(JL-005806-TL)

\$ 10,000 ex tax



Josh Lilley



Josh Lilley



Timothy Lai
Flopped Rabbit, 2025
Oil on linen
36 x 51 cm
14 x 20 inches
(JL-005805-TL)

\$ 12,000 ex tax



Josh Lilley



Josh Lilley



Rebecca Manson
Blue Zebra, 2025
Porcelain, glaze, adhesives,
canvas, hardware
208 x 145 x 8 cm
82 x 57 x 3 inches
(JL-005774-RMAN)

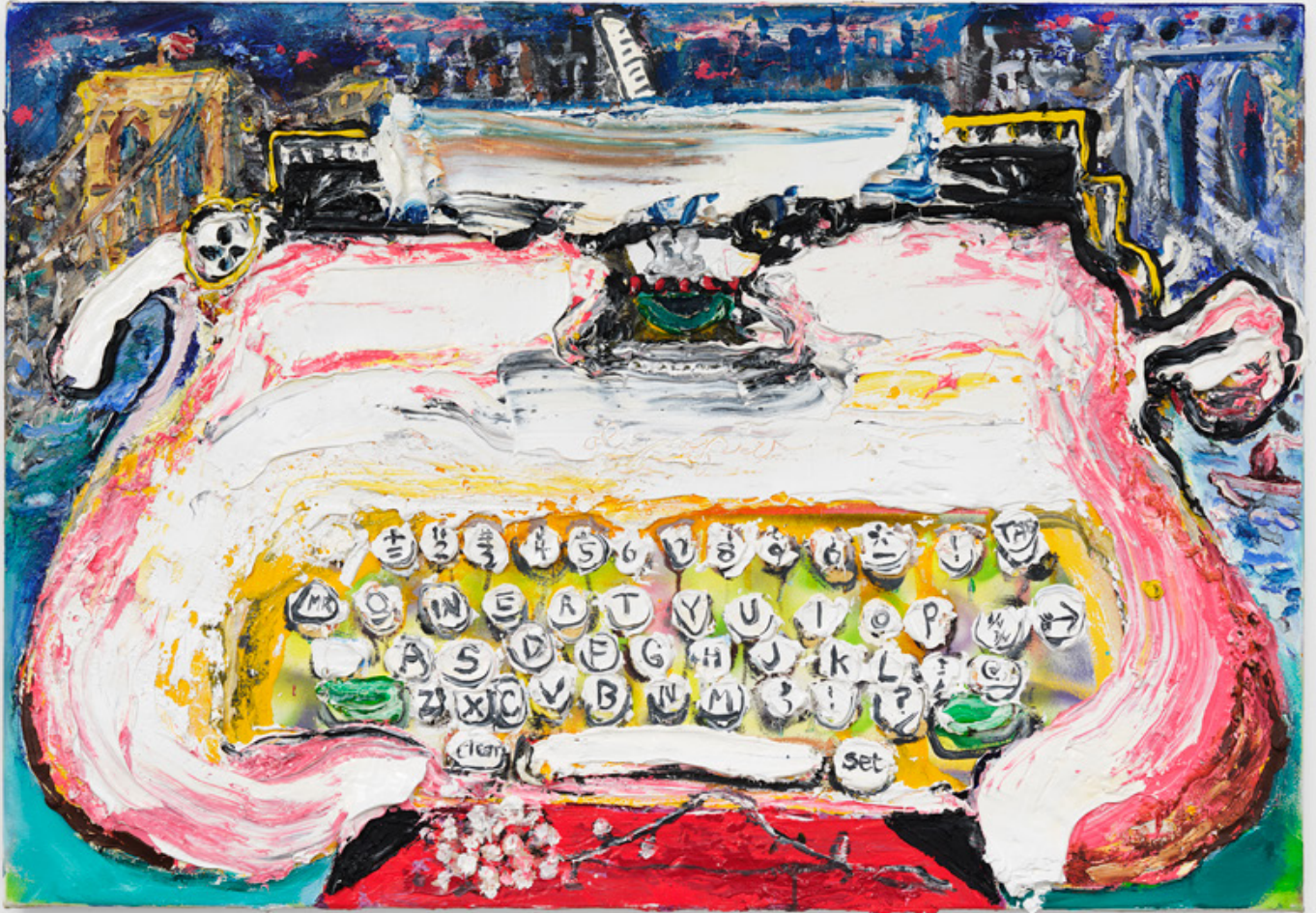
\$ 90,000 ex tax







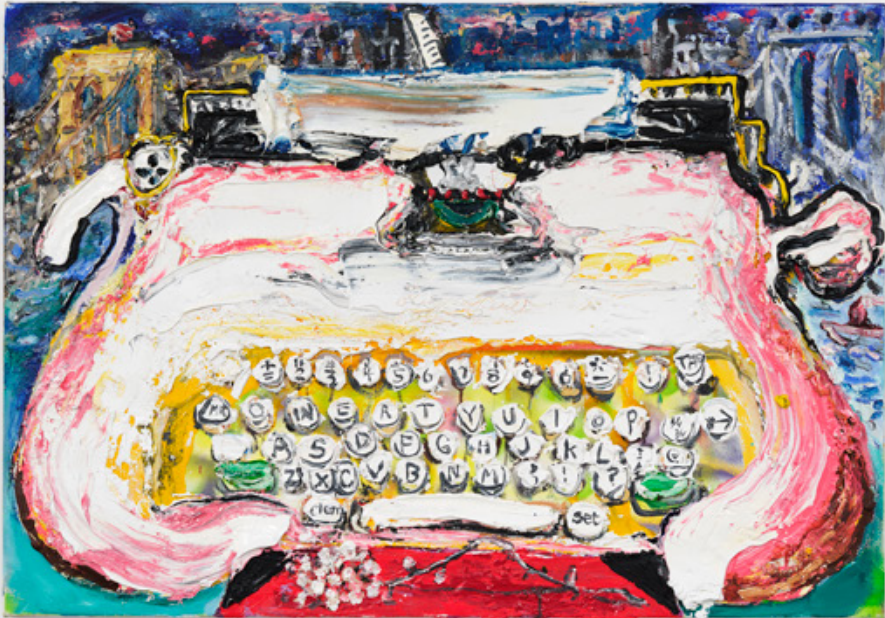
Josh Lilley



Sam Messer
spHere, 2024
Oil on canvas
76 x 101 cm
30 x 40 inches
(JL-005824-SM)

\$ 25,000 ex tax





Josh Lilley



Sam Messer
Brooklyn Stoop, 2022
Oil on canvas with stones
45 x 60 cm
18 x 23.5 inches
(JL-005825-SM)

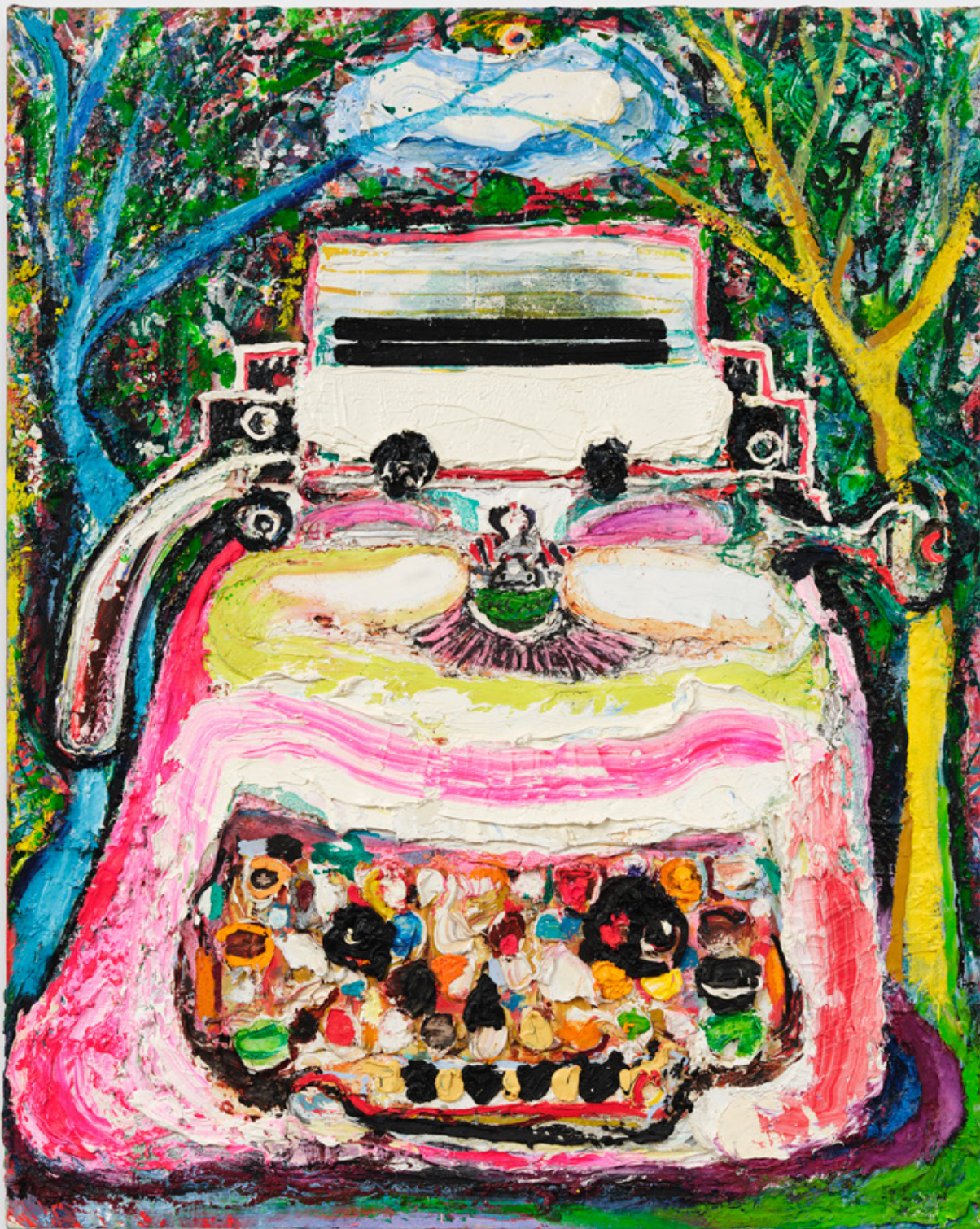
\$ 15,000 ex tax



Josh Lilley



Josh Lilley

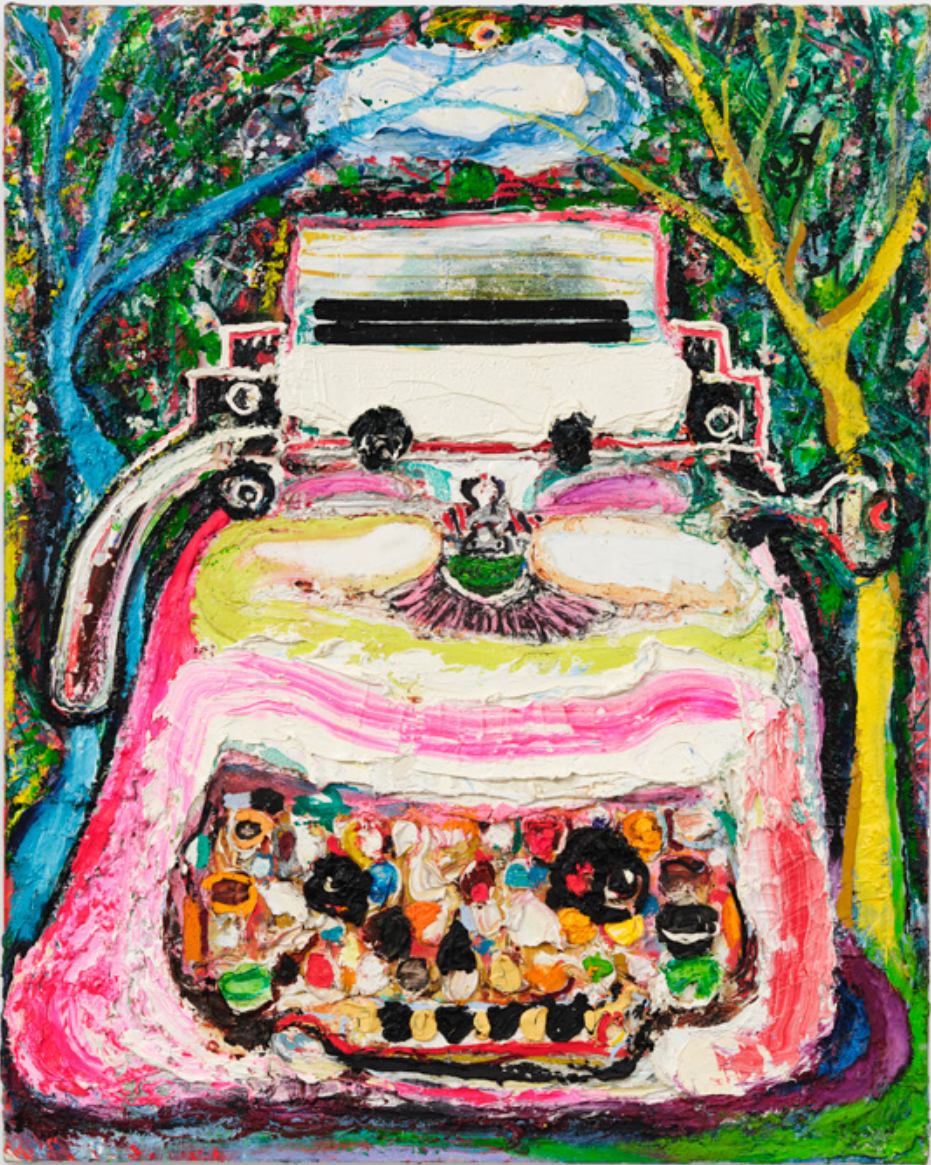


Sam Messer
Spring, 2024
Oil on canvas
127 x 101 cm
50 x 40 inches
(JL-005826-SM)

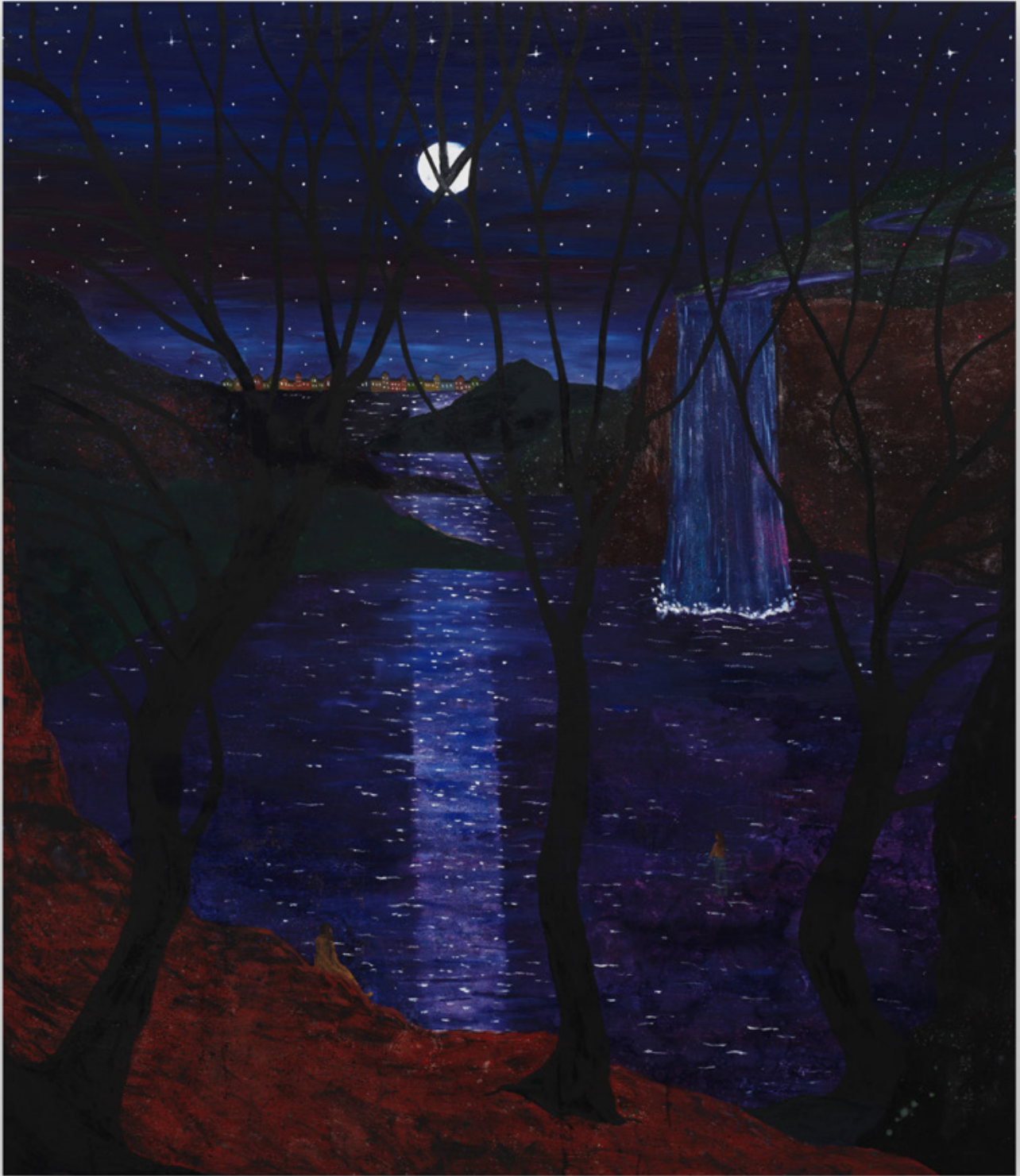
\$ 30,000 ex tax



Josh Lilley



Josh Lilley



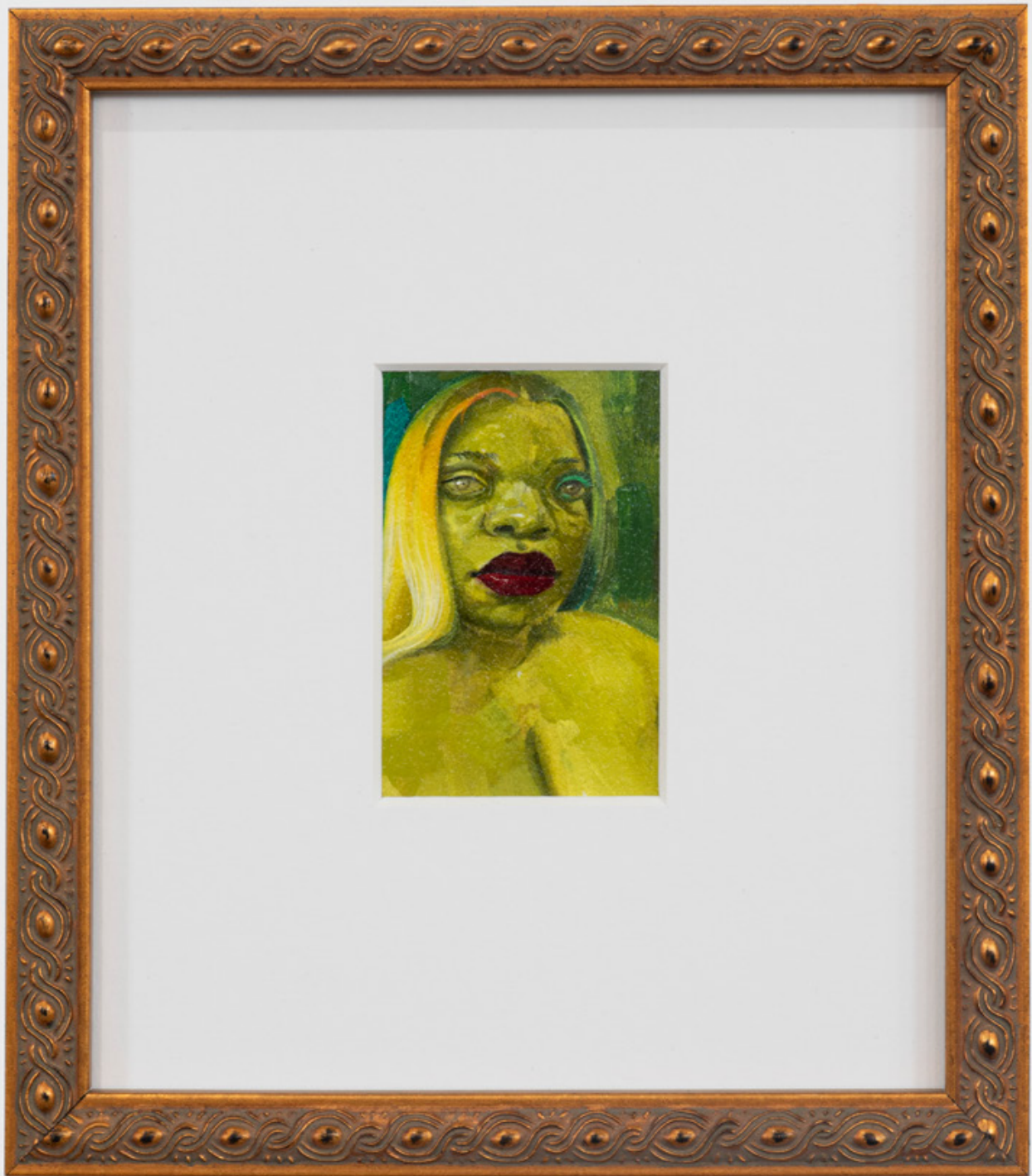
Tom Anholt
Hidden Cove, 2025
Oil on linen
220 x 190 cm
86.5 x 75 inches
(JL-005847-TA)

\$ 95,000 ex tax



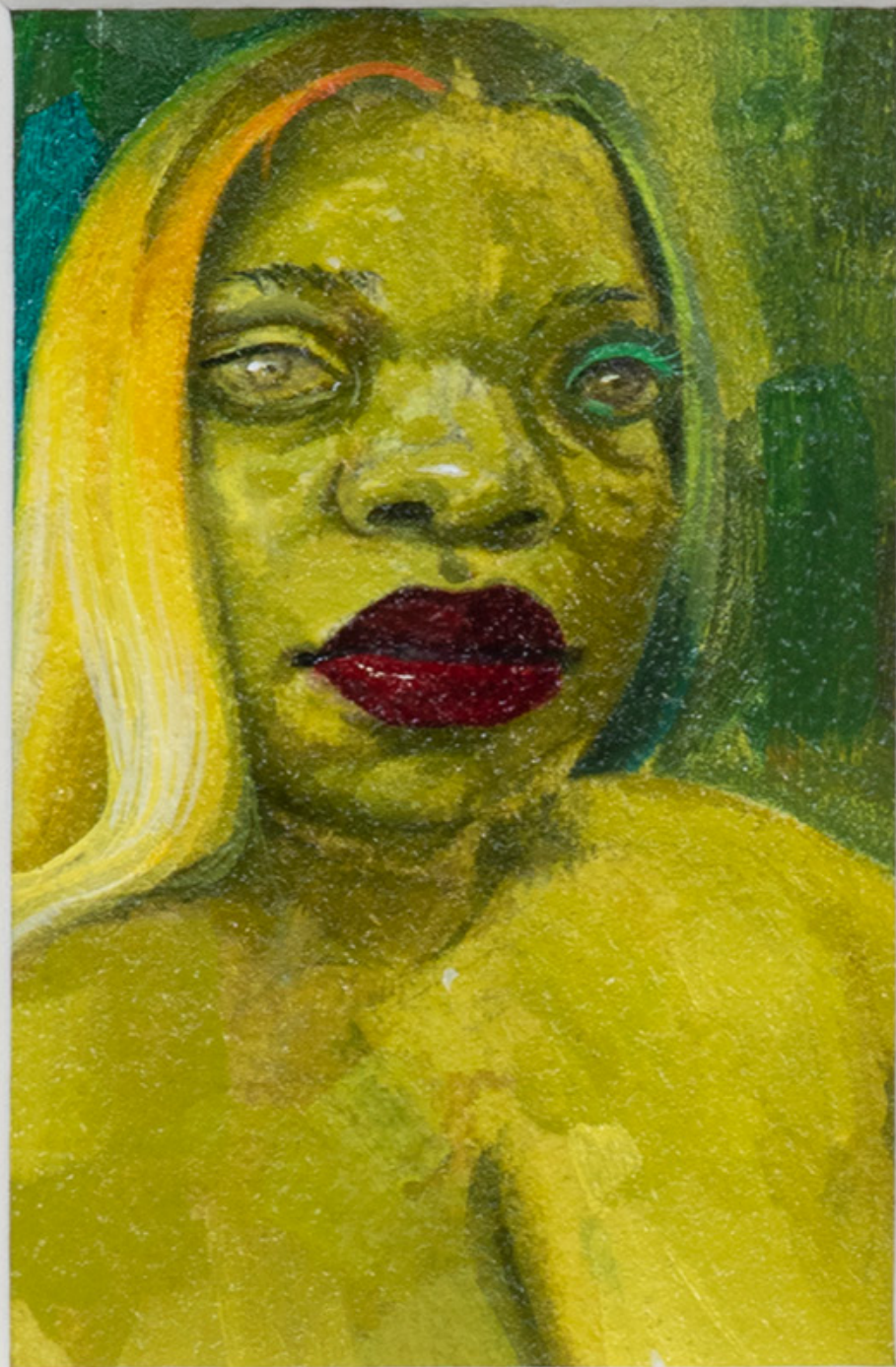


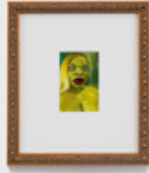
Josh Lilley



Autumn Wallace
Curiosity Stream, 2025
Oil on arches oil paper
18 x 20 cm
7 x 8 inches
(JL-005850-AW)

\$ 9,500 ex tax



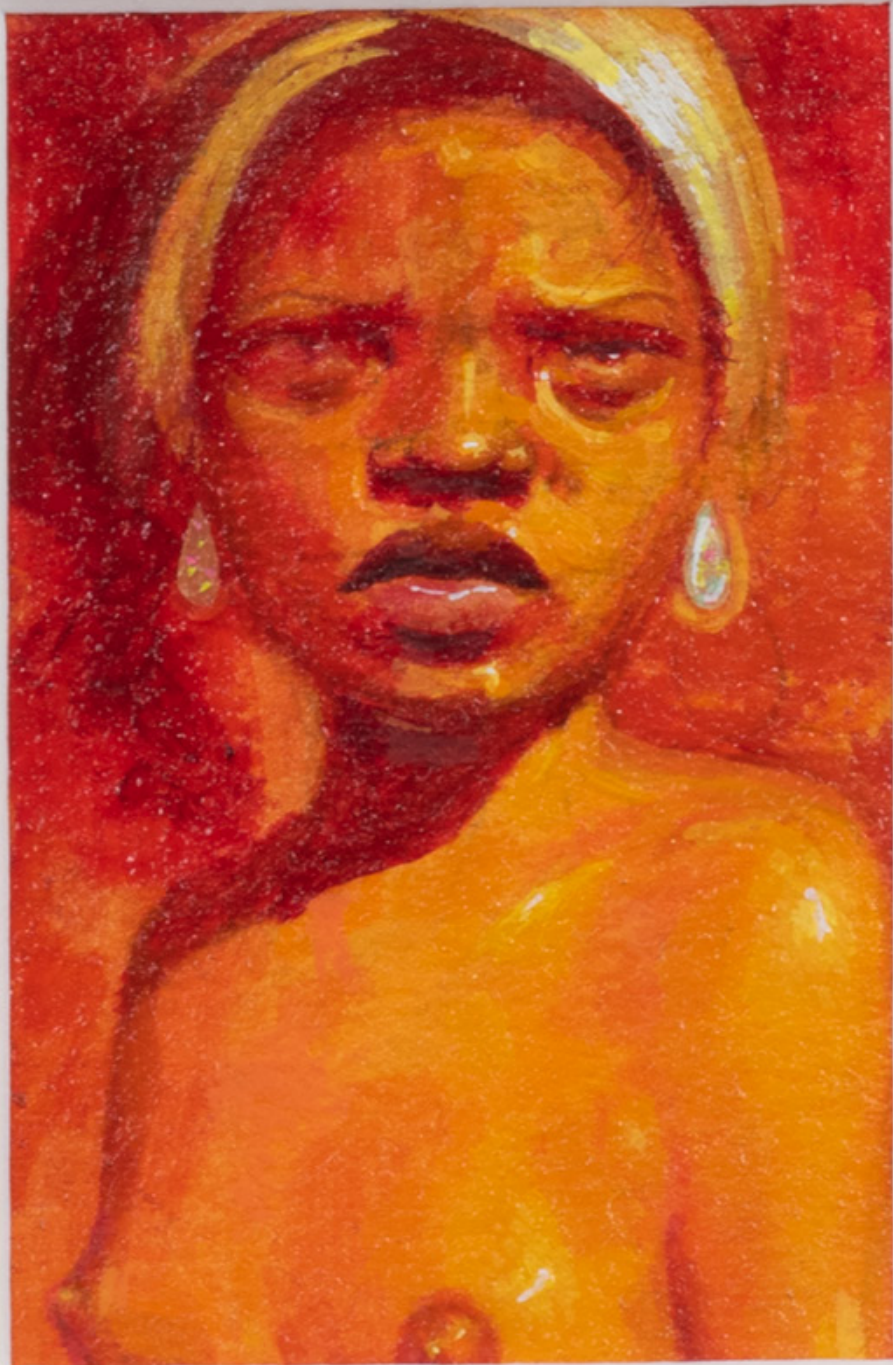


Josh Lilley



Autumn Wallace
Stop and..., 2025
Oil on arches oil paper
18 x 21 cm
7 x 8 inches
(JL-005851-AW)

\$ 9,500 ex tax





Josh Lilley



Autumn Wallace

The Eavesdropper: Ms Informed, 2025

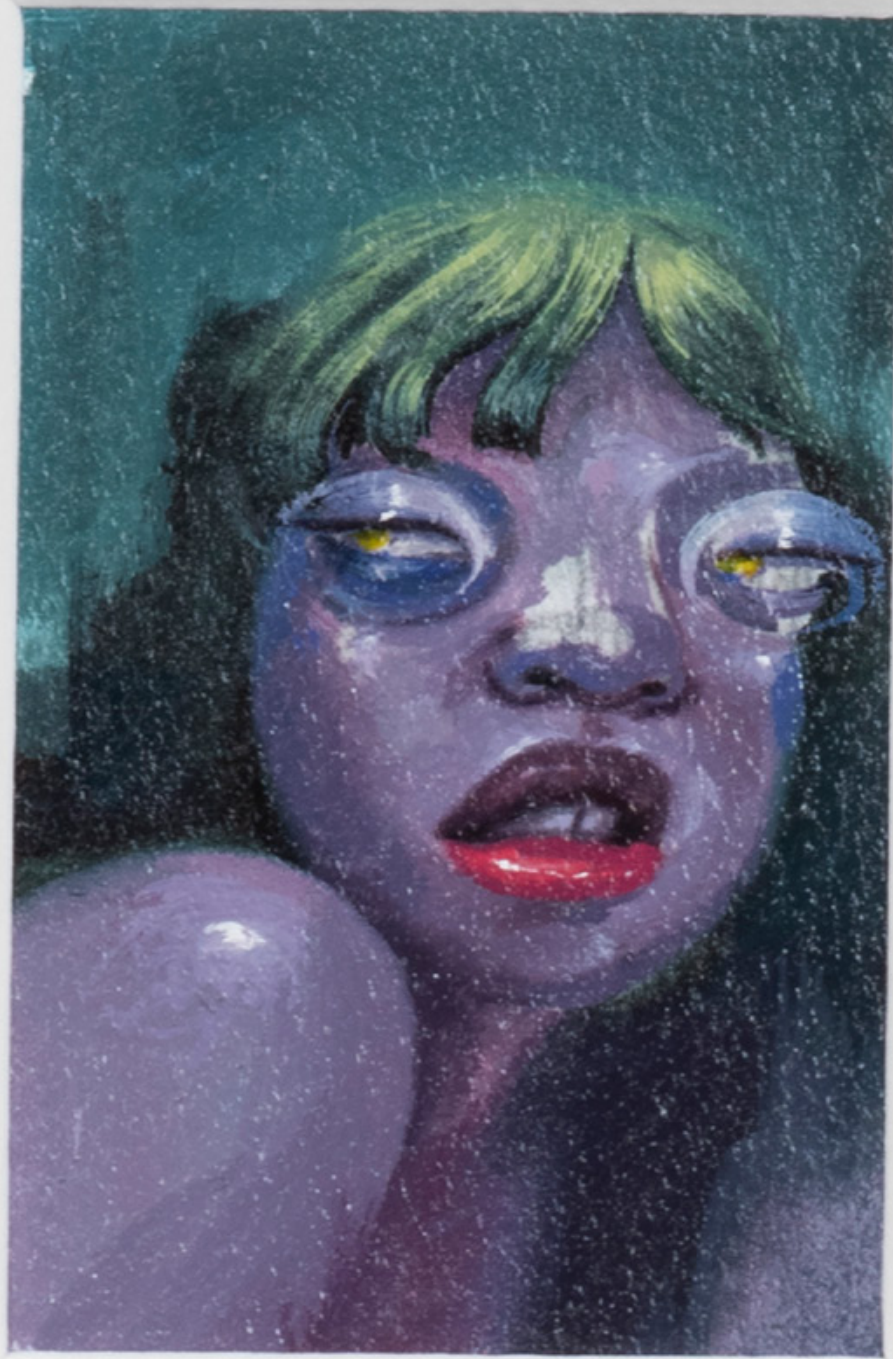
Oil on arches oil paper

20 x 22.5 cm

8 x 9 inches

(JL-005853-AW)

\$ 9,500 ex tax





Josh Lilley



Autumn Wallace
The Daydreamer, 2025
Oil on arches oil paper
24 x 26 cm
9.5 x 10.5 inches
(JL-005852-AW)

\$ 9,500 ex tax





Josh Lilley



Ryan Mosley
Destination Unknown, 2025
Oil on canvas
122 x 152 cm
47 x 59 inches
(JL-005845-RM)

\$ 40,000 ex tax



Josh Lilley



Ryan Mosley
New Horizon, 2025
Oil on canvas
100 x 80 cm
40 x 31.5 inches
(JL-005846-RM)

\$ 25,000 ex tax



Josh Lilley



Josh Lilley



William Wright

Apple and Piano, 2023-25

Oil on canvas

31 x 25 cm

12 x 10 inches

(JL-005820-WW)

\$ 8,500 ex tax



Josh Lilley



Josh Lilley



William Wright

Still Life With Glass of Beer, 2024-25

Oil on canvas

41 x 31 cm

16 x 12 inches

(JL-005808-WW)

\$ 10,000 ex tax



Josh Lilley



Josh Lilley



Josh Lilley



William Wright
Still-Life with Candle, 2024
Charcoal and ink on Kraft paper
30 x 21 cm
12 x 8 inches
(JL-005812-WW)

\$ 2,500 ex tax

Josh Lilley



William Wright
Tomato Plant, 2024
Charcoal and ink on Kraft paper
30 x 21 cm
12 x 8 inches
(JL-005753-WW)

\$ 2,500 ex tax

Josh Lilley



William Wright

Interior with Clock and Passing Train, 2024

Charcoal and ink on Kraft paper

30 x 21 cm

12 x 8 inches

(JL-005810-WW)

\$ 2,500 ex tax

Josh Lilley



William Wright

Still-Life with Rabbit's Skull, Artichoke and Bottle, 2024

Charcoal and ink on Kraft paper

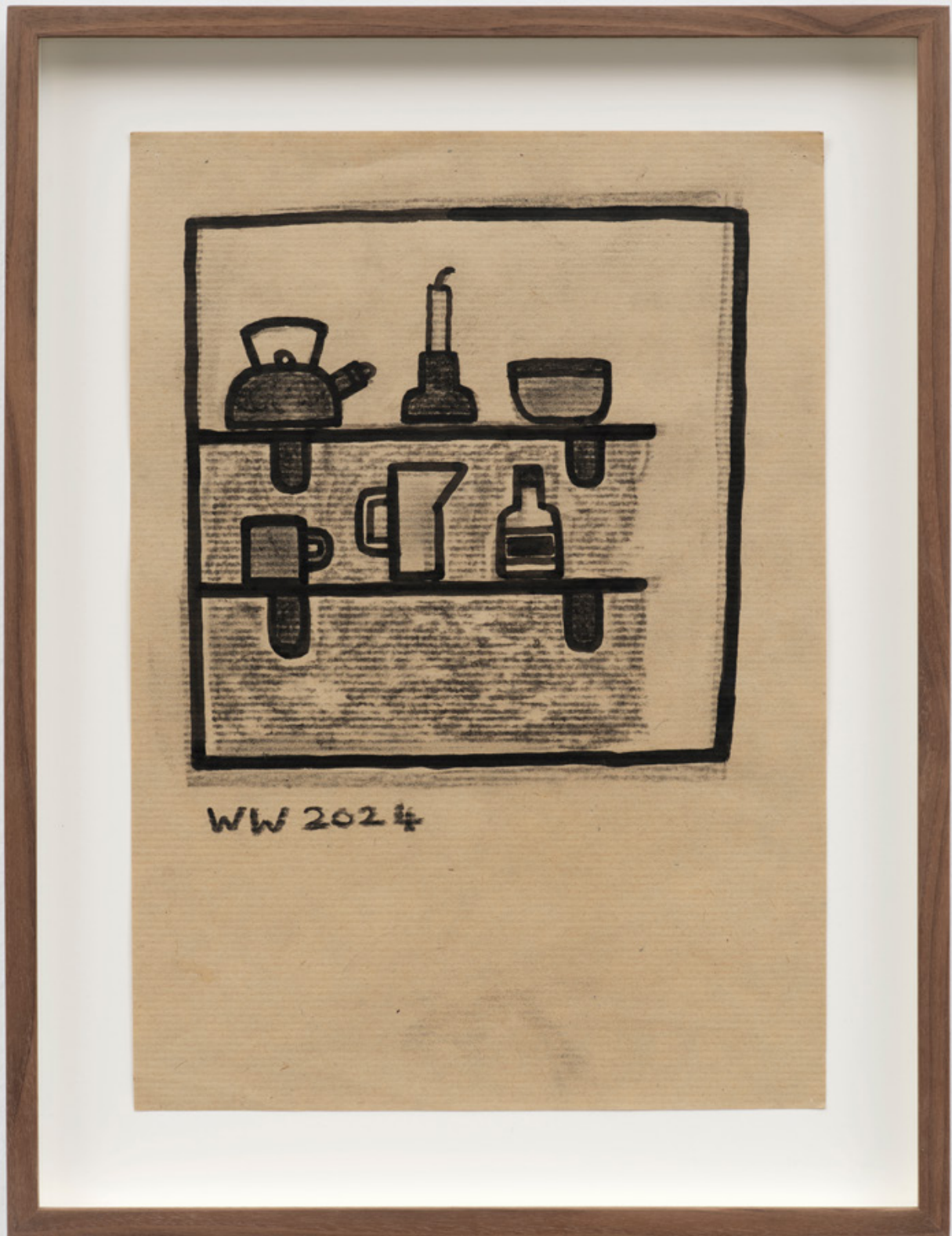
21 x 30 cm

8 x 12 inches

(JL-005757-WW)

\$ 2,500 ex tax

Josh Lilley



William Wright
Shelves, 2024
Charcoal and ink on Kraft paper
30 x 21 cm
11.5 x 8 inches
(JL-005811-WW)

\$ 2,500 ex tax

Josh Lilley



William Wright

Fruit in a Bowl, 2025

Charcoal and ink on Kraft paper

30 x 21 cm

12 x 8 inches

(JL-005814-WW)

\$ 2,500 ex tax

Josh Lilley



William Wright
Dead Flowers, 2023
Charcoal and ink on Kraft paper
21 x 30 cm
8 x 12 inches
(JL-005740-WW)

\$ 2,500 ex tax

