

# Art | Basel

## Basel

15 - 18 JUNE 2023

HALL 2 | BOOTH E04



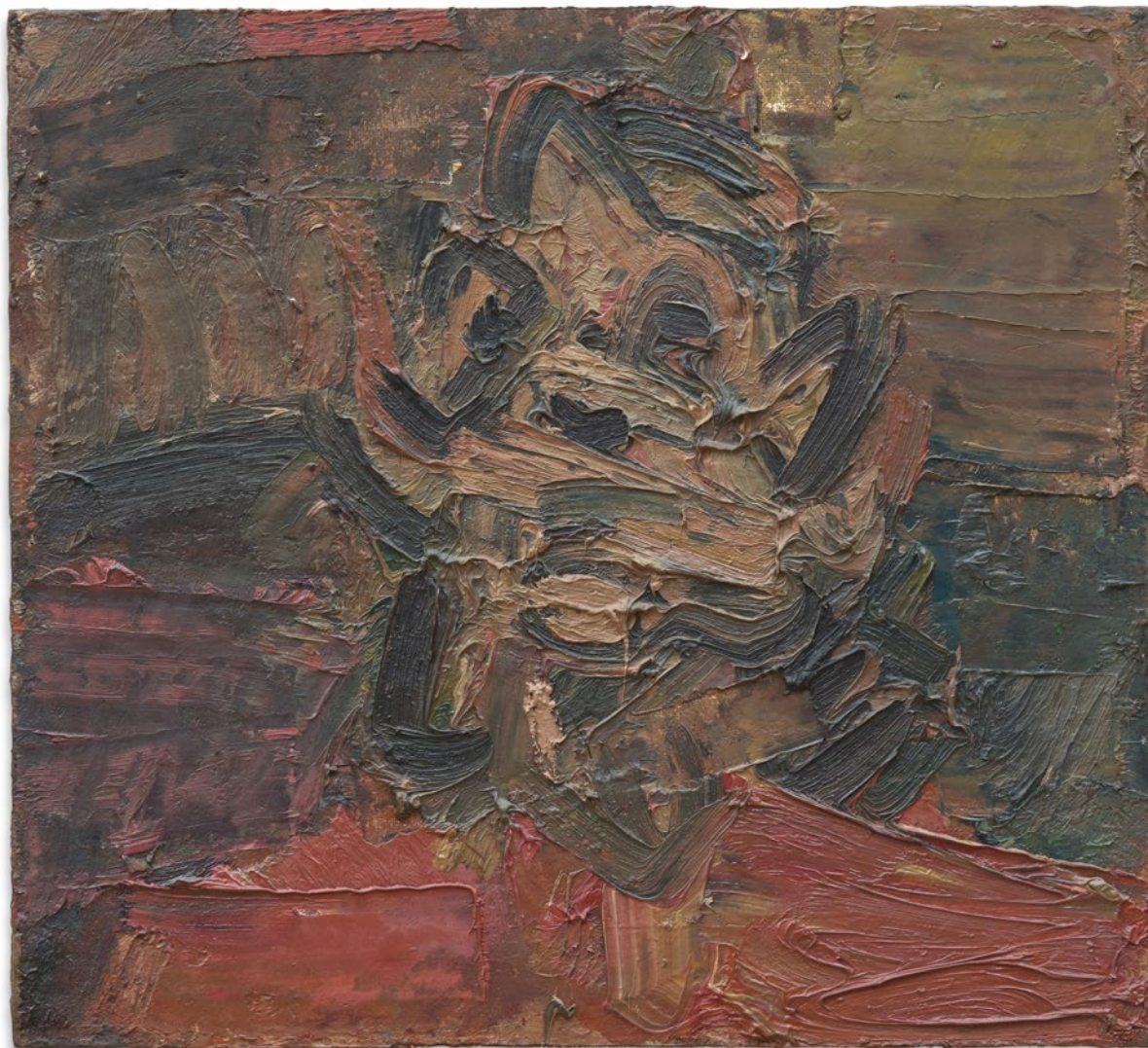
BEN  
BROWN  
FINE  
ARTS



FRANK AUERBACH  
MIQUEL BARCELÓ  
TONY BEVAN  
ALIGHIERO BOETTI  
ALBERTO BURRI  
ALEXANDER CALDER  
ENRICO CASTELLANI  
JEAN DEBUFFET  
LUCIO FONTANA  
WASSILY KANDINSKY  
YVES KLEIN  
PABLO PICASSO  
GERHARD RICHTER  
SEAN SCULLY  
ANTONI TÀPIES  
HANK WILLIS THOMAS







Frank Auerbach  
*Head of J.Y.M. III*, 1981  
Oil on board  
51 x 56 cm. (20  $\frac{1}{8}$  x 22  $\frac{1}{8}$  in.)  
AUE00020





Miquel Barceló  
*Le Nuage Noir*, 2002  
Mixed media on canvas  
160 x 195 cm. (63 x 76 ¾ in.)  
BAR00087



Tony Bevan  
*Self Portrait*, 1987  
Acrylic and charcoal on canvas  
204 x 176 cm. (80 ¼ x 69 ¼ in.)  
BEV00163





Alighiero Boetti

*I Venticinquesimo Giorno del Terzo Mese dell'Anno Millenovecentoottantotto, 1988*

Embroidery

101.5 x 111.5 cm. (40 x 43 ¾ in.)

BOE00585









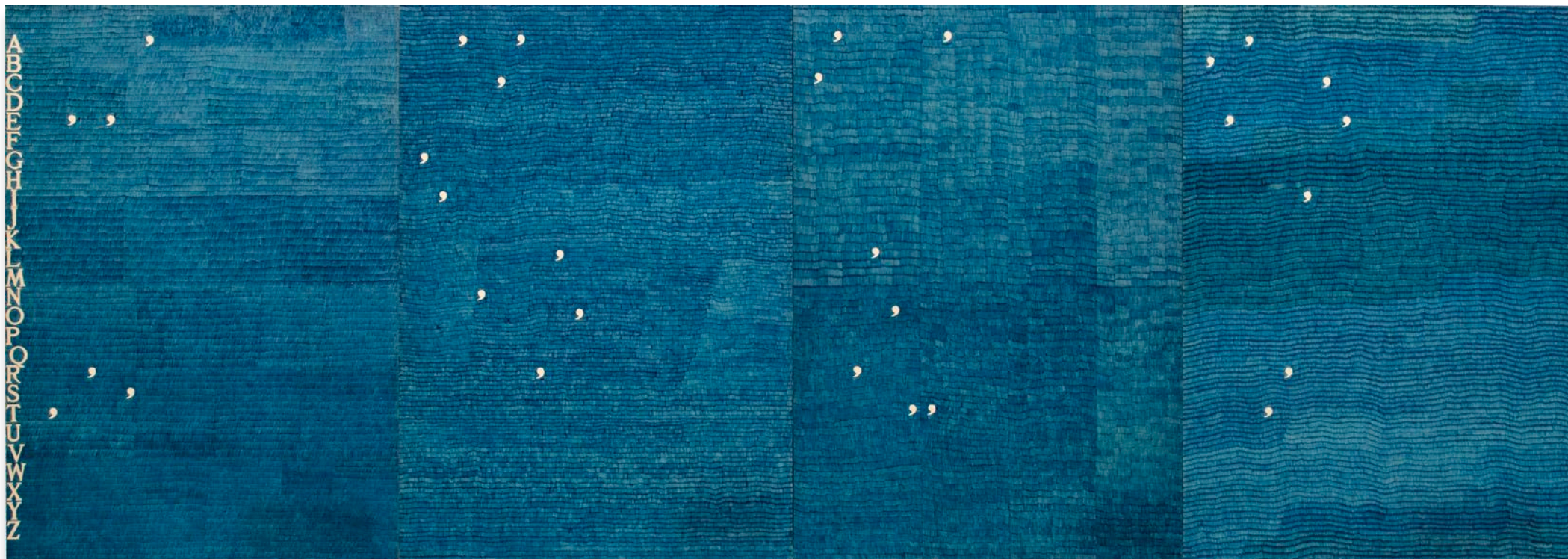






Alighiero Boetti  
*Mappa*, 1983  
Embroidery  
110 x 165 cm. (43 ¼ x 65 in.)  
BOE00508





Alighiero Boetti  
*Teresa Giancarlo Carlotta Beatrice, 1977*  
Ballpoint pen on paper  
4 parts, 100 x 71 cm. (39  $\frac{3}{8}$  x 28 in.) each  
100 x 284 cm. (39  $\frac{3}{8}$  x 111  $\frac{3}{4}$  in.) total  
BOE00582









Alberto Burri  
*Combustione*, 1968  
Plastic, vinavil and combustion on cellotex  
52 x 30 cm. (20 ½ x 11 ¾ in.)  
BUR00007





Alexander Calder  
*Extreme Cantilever*, 1949  
Sheet metal and steel wire standing mobile  
86.4 x 164 x 44 cm. (34  $\frac{1}{8}$  x 64  $\frac{5}{8}$  x 17  $\frac{3}{8}$  in.)  
CAL00080





Alexander Calder  
*More Extreme Cantilever*, 1949  
Ink on paper  
28.4 x 39.7 cm. (11  $\frac{1}{8}$  x 15  $\frac{5}{8}$  in.)  
CAL00001





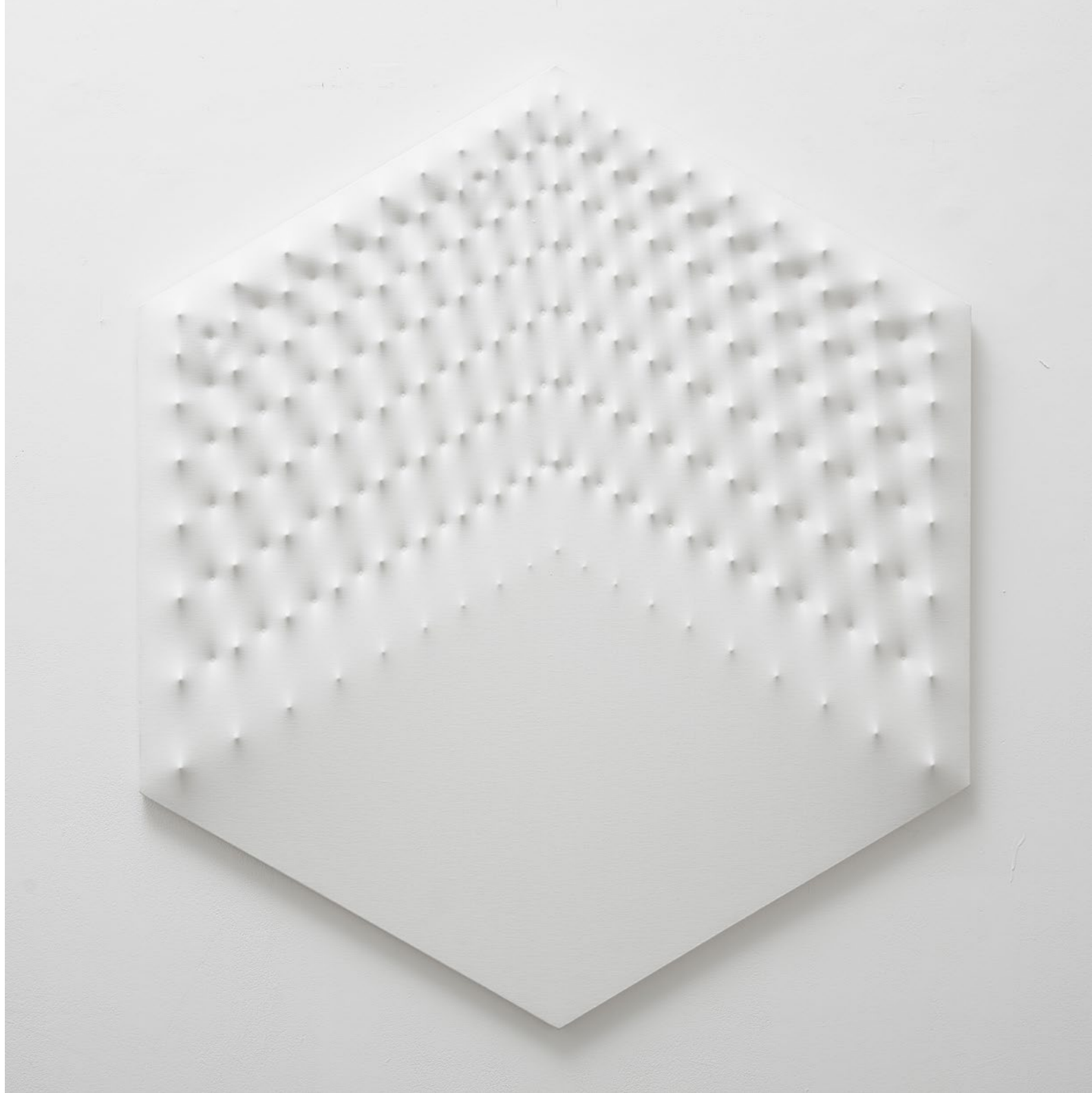




Alexander Calder  
*JERK*, 1972  
Sheet metal, wire and paint  
73.7 x 73.7 x 35.6 cm. (29 x 29 x 14 in.)  
CAL00085



Enrico Castellani  
*Superficie Bianca*, 1969  
Acrylic on canvas  
120 x 104 cm. (47 ¼ x 41 in.)  
CAST00005





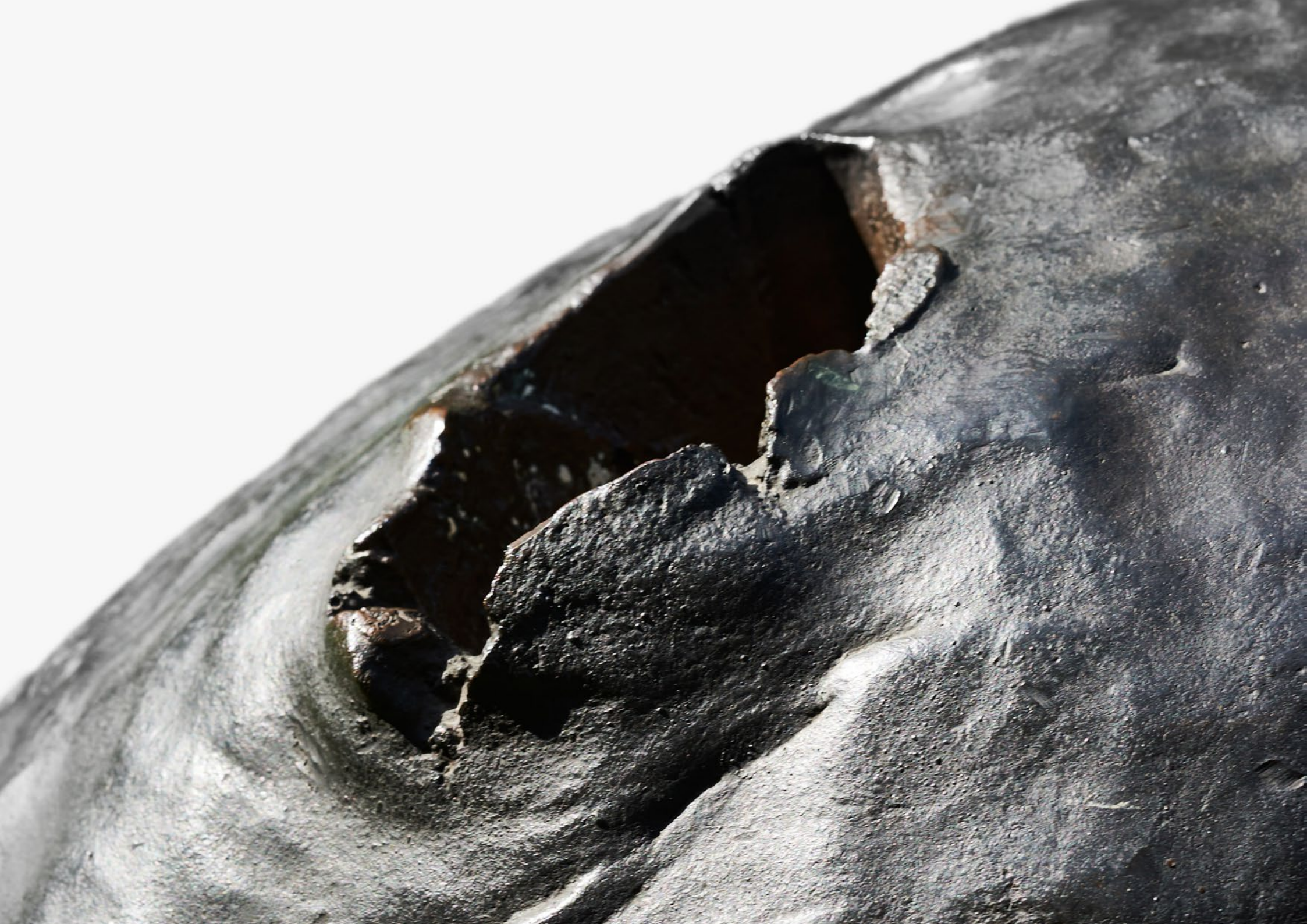






Jean Dubuffet  
*Mademoiselle Couperose*, 1950  
Oil and mixed media on board  
64.8 x 54 cm. (25 ½ x 21 ¼ in.)  
DUB00012



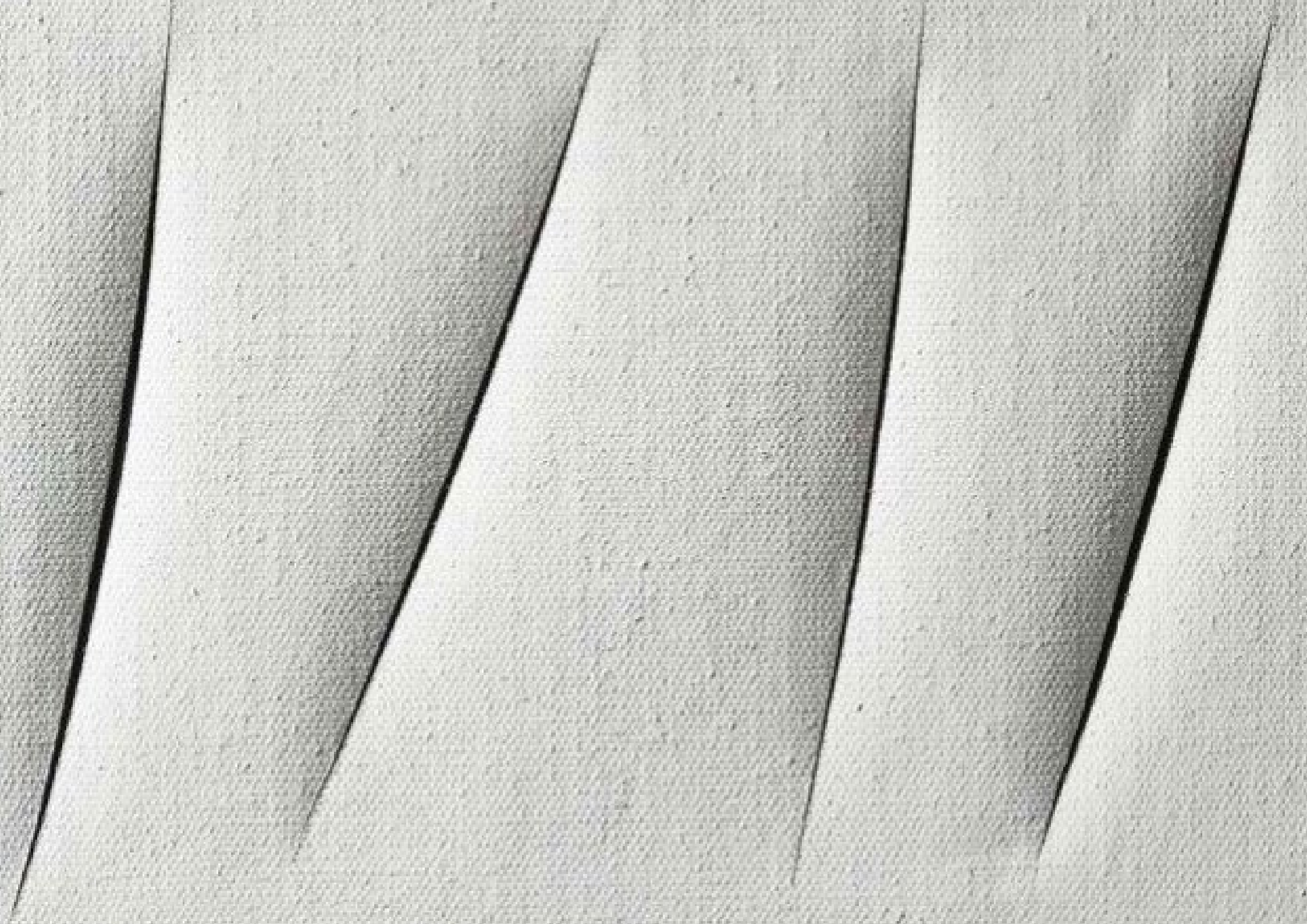




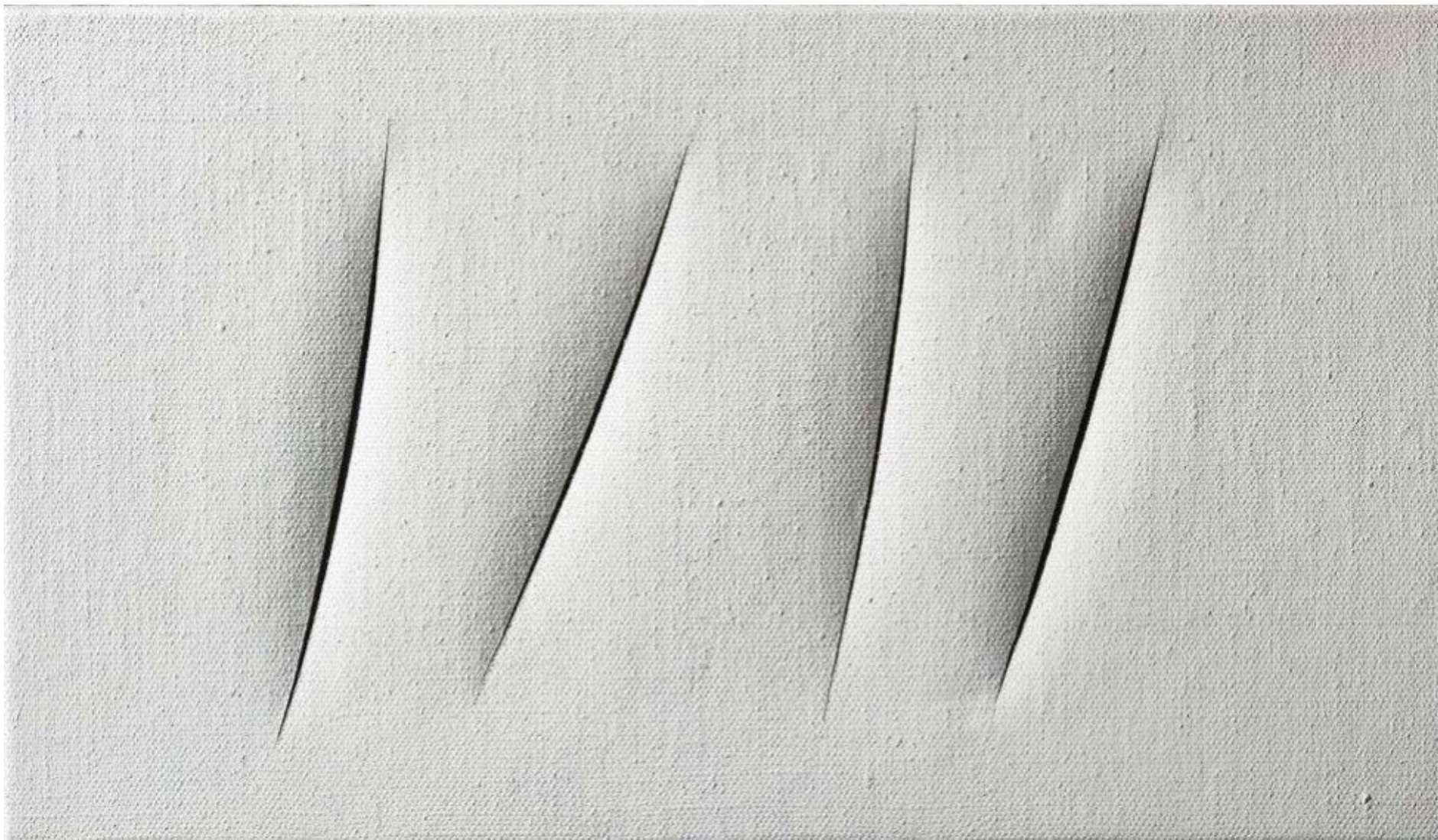


Lucio Fontana  
*Concetto Spaziale, Natura*, 1959-60  
Bronze  
39 x 50 x 45 cm. (15 ¾ x 19 ¾ x 17 ¾ in.)  
Edition of 3 + 1 AP  
FON00254







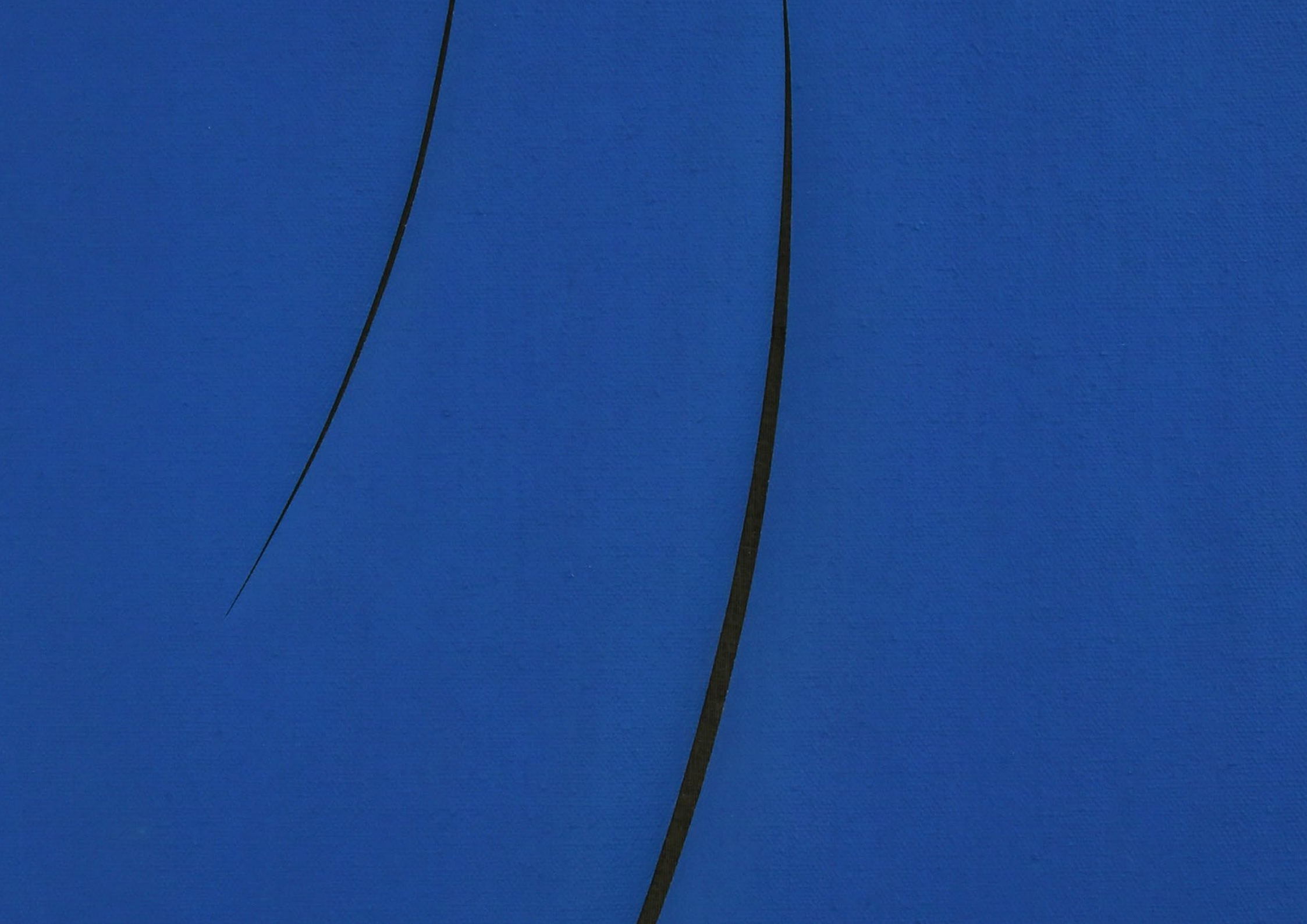


Lucio Fontana  
*Concetto Spaziale, Attese*, 1961  
Waterpaint on canvas  
27 x 46 cm. (10  $\frac{5}{8}$  x 18  $\frac{1}{8}$  in.)  
FON00265

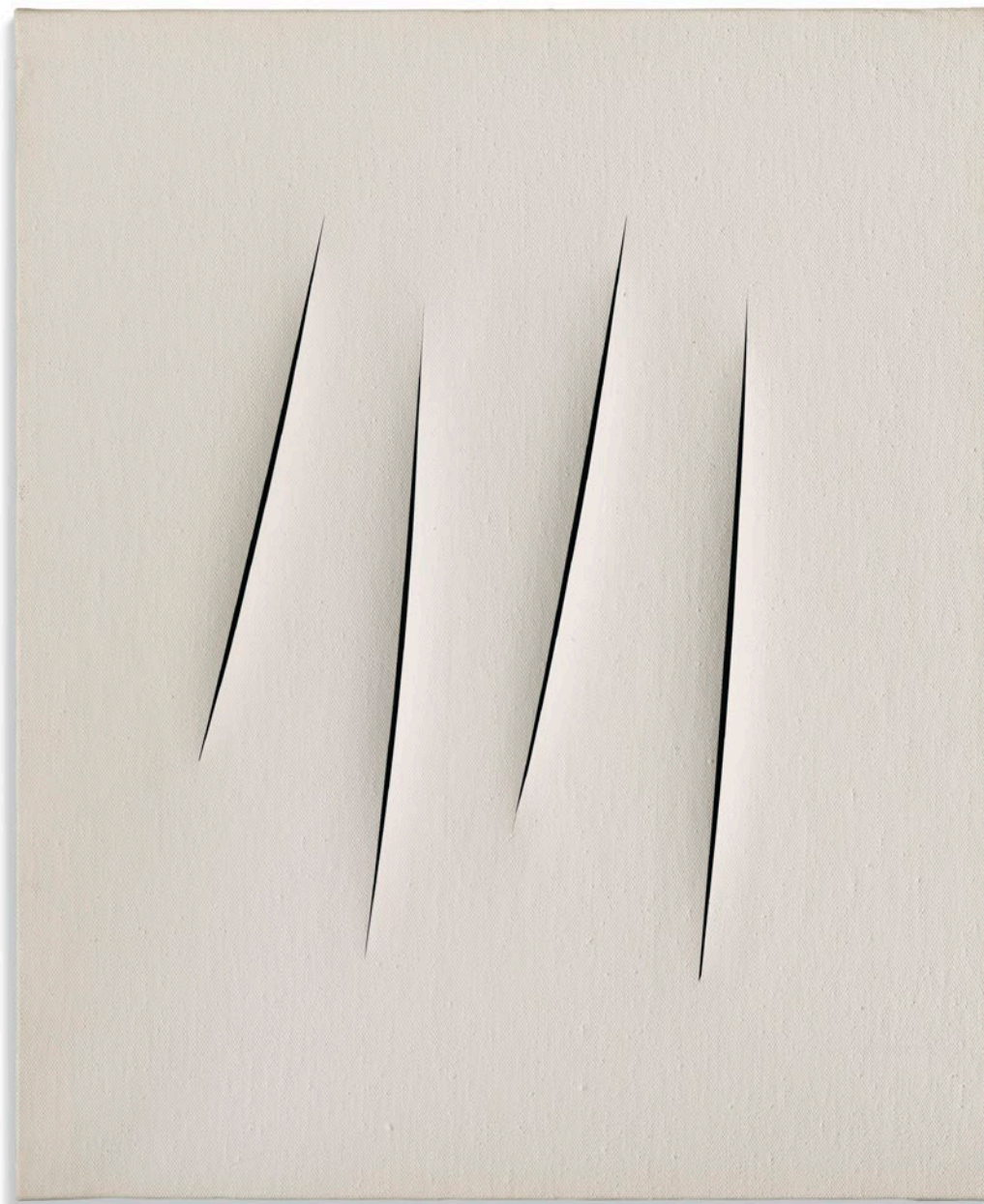
Lucio Fontana  
*Concetto Spaziale, Attese*, 1961  
Waterpaint on canvas  
65 x 50 cm. (25 5/8 x 19 3/4 in.)  
FON00259











Lucio Fontana  
*Concetto Spaziale, Attese*, 1965  
Waterpaint on canvas  
73.5 x 60 cm. (29 x 23 5/8 in.)  
FON00264









Wassily Kandinsky  
*Grau*, 1931  
Oil on cardboard  
70 x 60 cm. (27 ½ x 23 ⅝ in.)  
KAN00002





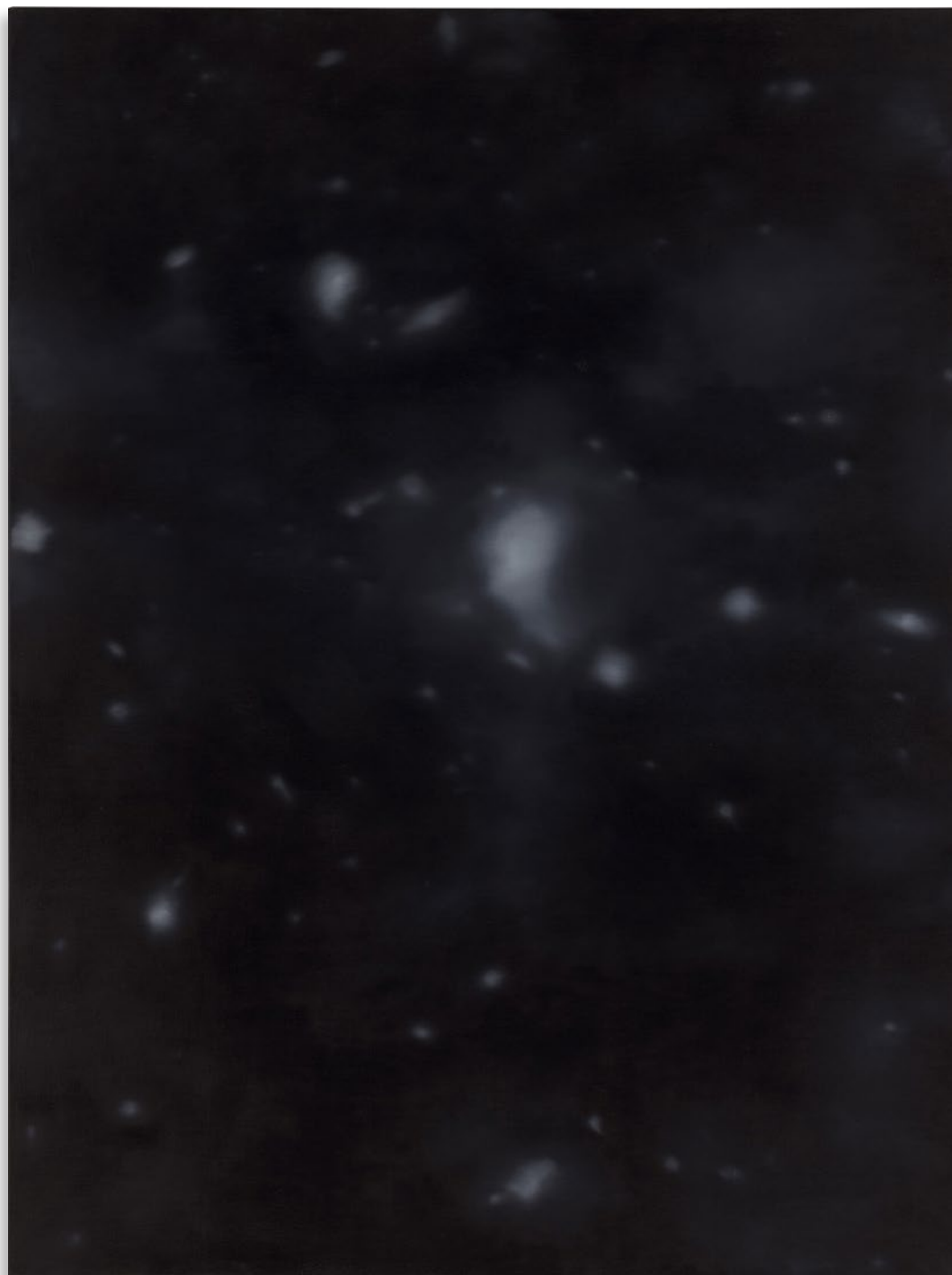
Yves Klein  
*Untitled Blue Sponge Sculpture, (SE 242)*, c. 1960  
Dry pigment and synthetic resin on natural sponge  
Sponge: 18 x 17 x 9 cm. (7  $\frac{1}{4}$  x 6  $\frac{3}{4}$  x 3  $\frac{1}{2}$  in.)  
Overall: 36 x 19 x 9 cm. (14  $\frac{1}{8}$  x 7  $\frac{1}{2}$  x 3  $\frac{1}{2}$  in.)  
KLE00056







Gerhard Richter  
*Sternbild (Constellation)*, 1969  
Oil on canvas  
200 x 150.4 cm. (78 ¾ x 59 ¼ in.)  
RIC00059







Sean Scully  
*Wall of Light Shadow*, 2002  
Oil on linen  
190.5 x 203.2 cm. (75 x 80 in.)  
SCU00028



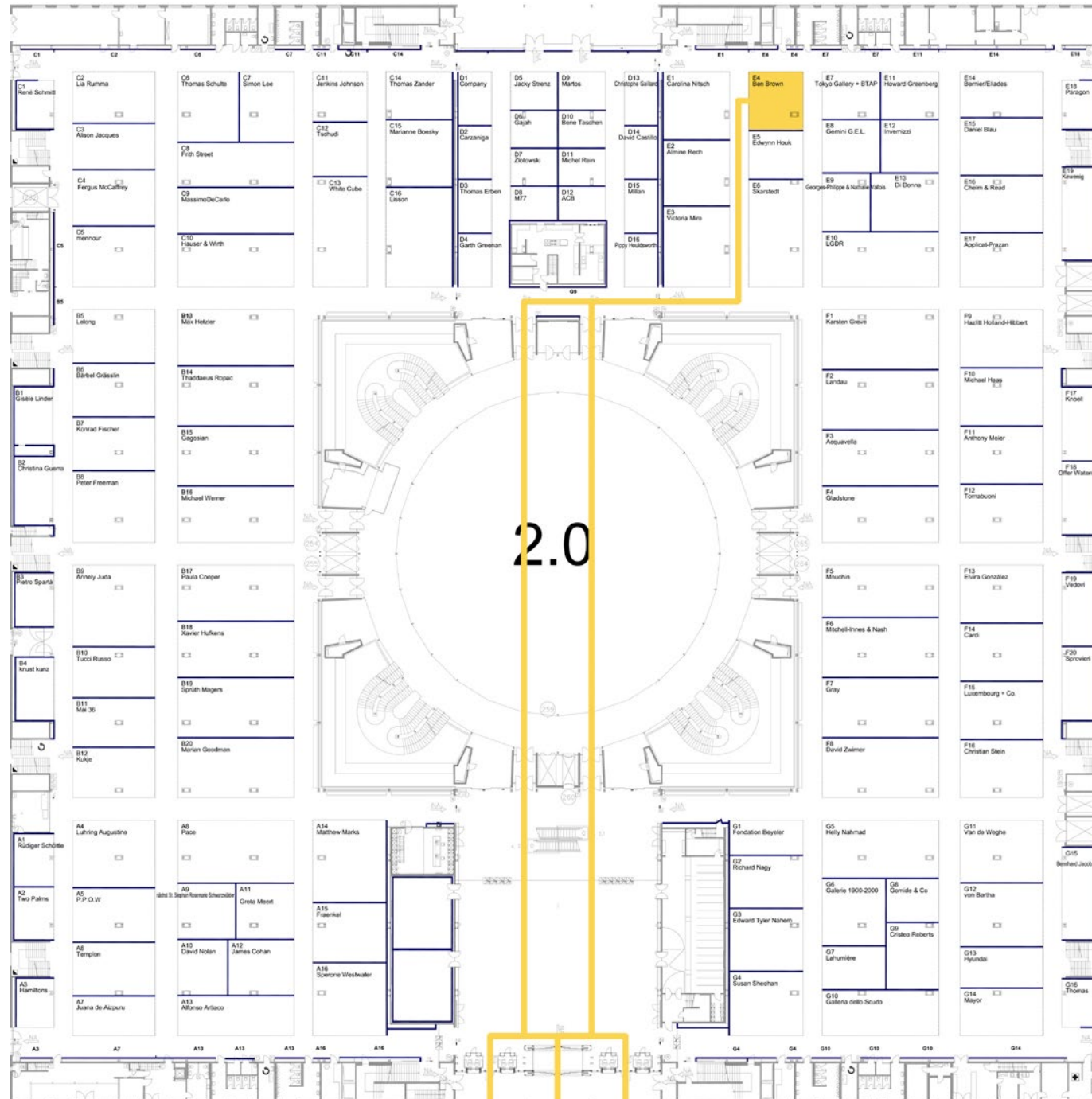






Antoni Tàpies  
*Cross on Brown*, 1960  
Mixed media on canvas  
194.5 x 170 cm. (76 <sup>5</sup>/<sub>8</sub> x 66 <sup>7</sup>/<sub>8</sub> in.)  
TAP00016





PARCOURS

Hank Willis Thomas: *Duality (Reflection)*, 2022

Parcours Opening: 12 June 1pm - 4pm

# HANK WILLIS THOMAS

Born in 1976, Plainfield, USA

Lives and works in New York, USA

*Duality (Reflection)* is preceded by Hank Willis Thomas's iconic sculpture *Unity*, a 6.85-meter bronze arm with the index finger pointing skyward, which was permanently installed in downtown Brooklyn in New York City in 2019.

The new sculpture extends the artist's central themes relating to perspective, identity, media, and popular culture to explore the multiplicity of meanings contained in familiar gestures. In this case, the upheld first and middle finger are often referred to as the peace sign, but can also be received as a V for victory or a whimsical pose for a photograph. This monumental work is a striking visual representation of everchanging shifts in culture and meaning.

It speaks to the universal power of gestures and the all-important impact of individual experience in interpretation.

Fittingly, *Duality (Reflection)* is a continuation of Thomas's 'Punctum' series, based on the French philosopher Roland Barthes's photographic theory of the punctum, which refers to the detail in an image that disrupts the viewer's experience, creating a direct relationship between them and the image.

In his photography, sculpture, installation, video, and mixed-media works, the conceptual artist Hank Willis Thomas examines topics of commodity, history, media, popular culture, identity, and race, in the hope of inspiring mutual understanding. Thomas is also a co-founder of For Freedoms, an artist-led organization that models and increases creative civic engagement, discourse, and direct action.



Hank Willis Thomas  
*Duality (Reflection)*, 2022  
Stainless steel with mirrored finish  
365 x 136 x 84 cm. (143 ¾ x 53 ½ x 33 ⅞ in.)  
Edition of 3 + 1 AP  
THO00158

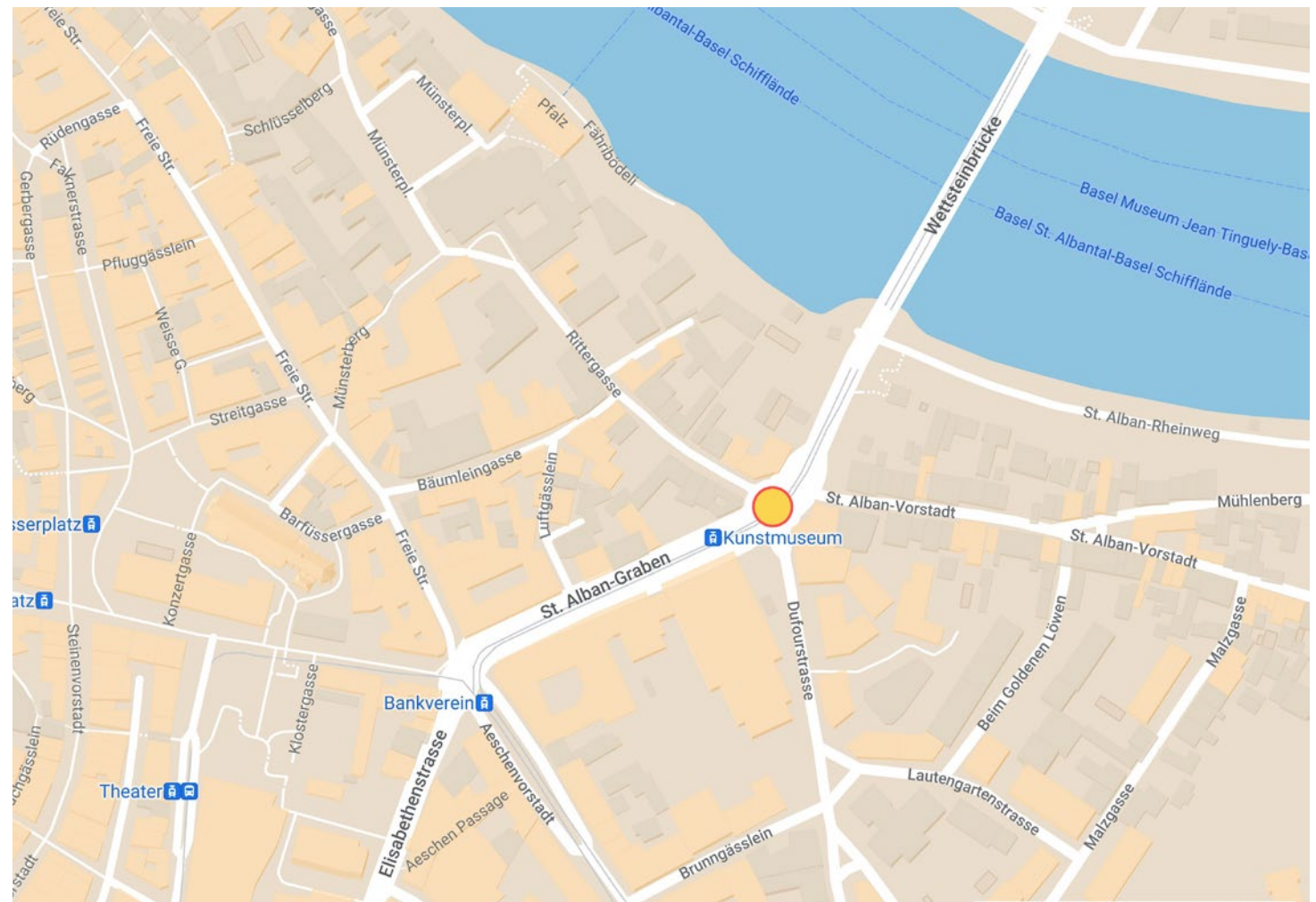


# Art|Basel Basel

## PARCOURS

Hank Willis Thomas: *Duality (Reflection)*, 2022

Parcours Opening: 12 June 1pm - 4pm



# BEN BROWN FINE ARTS

## LONDON

### GALLERY

12 Brook's Mews  
London W1K 4DG

### OFFICE

52 Brook's Mews  
London W1K 4EE

[info@benbrownfinearts.com](mailto:info@benbrownfinearts.com)  
T +44 (0)20 7734 8888  
F +44 (0)20 7734 8892

## HONG KONG

201 The Factory, 1 Yip Fat Street  
Wong Chuk Hang, Hong Kong

香港黃竹坑業發街1號  
The Factory 201室

[hkinfo@benbrownfinearts.com](mailto:hkinfo@benbrownfinearts.com)  
T +852 2522 9600

## PALM BEACH (Reopening November 2023)

244 Worth Avenue  
Palm Beach FL 33480

[palmbeach@benbrownfinearts.com](mailto:palmbeach@benbrownfinearts.com)  
T +1 561 508 5116