

WHITE CUBE

The background is an abstract painting with a grid-like structure. The top section features a grid of squares containing various colors and textures, with a prominent purple and blue wash above it. A thick green horizontal band runs across the middle. Below this, there's a dark, textured band. The bottom section shows a grid of squares with dark, moody colors and some red, semi-circular shapes that resemble umbrellas or petals. The overall style is expressive and layered.

FRIEZE  
NEW YORK

13–17 May 2026

TUNJI ADENIYI-JONES  
ELLEN ALTFEST  
EL ANATSUI  
MICHAEL ARMITAGE  
JULIE CURTISS  
ENRICO DAVID  
TRACEY EMIN  
SARA FLORES  
THEASTER GATES  
LOUISE GIOVANELLI  
ANTONY GORMLEY  
KATHARINA GROSSE  
KLÁRA HOSNEDLOVÁ

MARGUERITE HUMEAU  
FIRENZE LAI  
DANICA LUNDY  
IBRAHIM MAHAMA  
BEATRIZ MILHAZES  
SARAH MORRIS  
HOWARDENA PINDELL  
MARINA RHEINGANTZ  
DORIS SALCEDO  
CINGA SAMSON  
EMMI WHITEHORSE  
CERITH WYN EVANS

Stand B9  
The Shed  
545 West 30th Street  
New York, NY 10001

TRACEY EMIN

*It's the way we Think*  
2004

Appliquéd blanket

Blanket: 285 × 209 cm | 111 ¼ × 82 ¼ in.

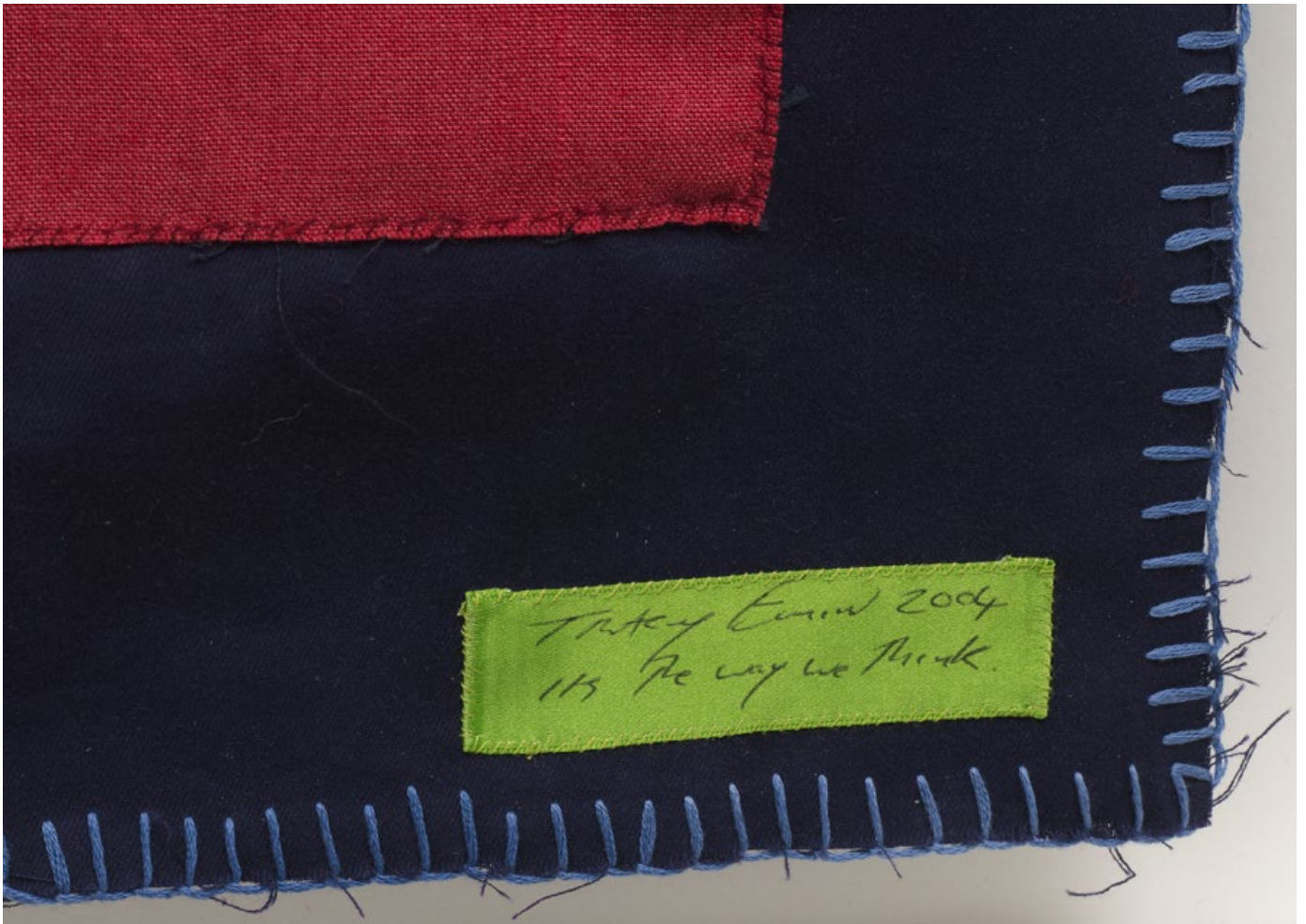
305 × 228 × 9 cm | 120 × 89 ¾ × 3 ½ in. (framed)

Price upon application



Tate Modern presents a landmark exhibition dedicated to the work of Tracey Emin, titled 'A Second Life', on view in London until 31 August 2026.





MICHAEL ARMITAGE

*Hornbill* (21st - 24th September 2013)  
2014

Oil on Lubugo bark cloth  
151 × 196 cm | 59 <sup>7</sup>/<sub>16</sub> × 77 <sup>3</sup>/<sub>16</sub> in.

Price upon application



The Pinault Collection presents 'The Promise of Change', a solo exhibition by Michael Armitage at Palazzo Grassi showcasing a comprehensive overview of the artist's practice. Bringing together a selection of works created over the past 10 years, the presentation will feature large-format paintings and drawings.



# THEASTER GATES

*Hula*

2025

Industrial oil-based enamel, rubber torch down, bitumen  
and steel

79.4 × 246.4 × 15.9 cm | 31 ¼ × 97 × 6 ¼ in.

USD 450,000 *plus applicable taxes*



The Obama Presidential Center have announced a landmark public artwork by Theaster Gates, celebrating Black Chicago's legacies of creative power, self-determination and indefatigable resolve, which will anchor the Center's Hadiya Pendleton Atrium. The commission will be unveiled at the forthcoming opening of the Obama Presidential Center in 2026.



# THEASTER GATES

*Protected Vessel - Silver*

2025

Plaster, rubber torch down and industrial oil-based enamel

108 × 55.9 × 55.9 cm | 42 ½ × 22 × 22 in.

USD 250,000 *plus applicable taxes*

Click [HERE](#) to view a video of this work



In this year's Art Basel Awards, Theaster Gates has been named a Medallist in the 'Established Artists' category.



# EL ANATSUI

*LuwVor I*  
2025

Aluminium, wood and copper wire  
224 × 250 cm | 88 <sup>3</sup>/<sub>16</sub> × 98 <sup>7</sup>/<sub>16</sub> in.

USD 2,200,000 *plus applicable taxes*

Click [HERE](#) to view a video of this work



EL ANATSUI

*LuwVor 1*  
Verso





DORIS SALCEDO

*Untitled*

c.1989–90

Cotton shirts with plaster and steel

168.9 × 27 × 41.6 cm | 66 ½ × 10 ⅝ × 16 ⅜ in.

USD 475,000 *plus applicable taxes*





SARA FLORES

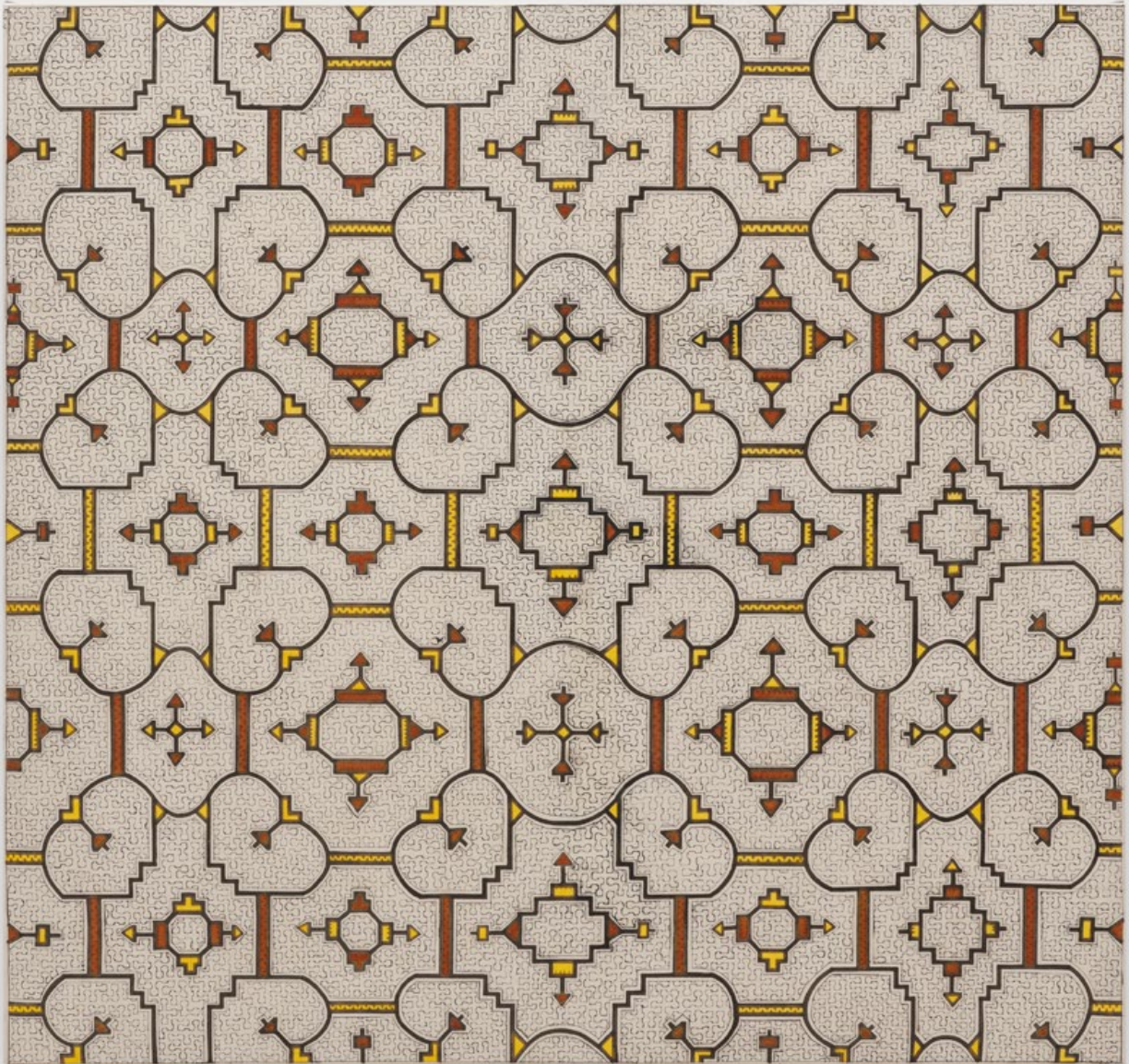
*Untitled (Maya Kené, 2021)*

2021

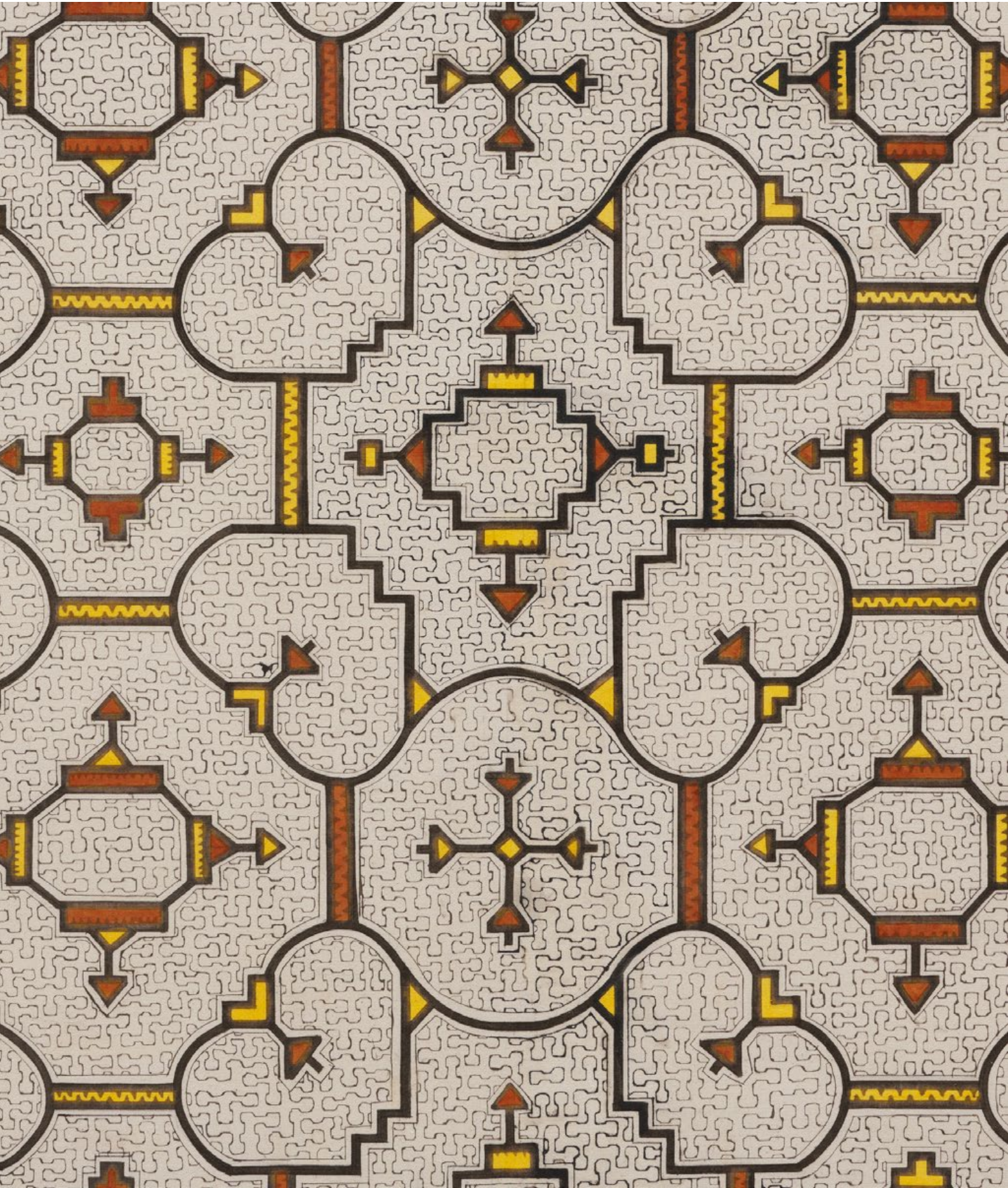
Vegetal dyes and pigments on wild-cotton canvas

136.5 × 143.5 × 3.7 cm | 53 ¾ × 56 ½ × 1 ⅞ in.

USD 65,000 *plus applicable taxes*



Sara Flores has been announced as the artist representing Peru at the 61st International Art Exhibition of La Biennale di Venezia, which is opening on 9 May 2026. Additionally, White Cube New York is pleased to present a solo exhibition by the artist, opening June 2026. Click [HERE](#) to read more.



# HOWARDENA PINDELL

*Autumn*  
2024

Acrylic, hole-punched paper and matte medium on sewn canvas  
209.6 × 244.5 cm | 82 ½ × 96 ¼ in.

USD 875,000 *plus applicable taxes*

Click [HERE](#) to view a video of this work



In this year's Art Basel Awards, Howardena Pindell has been named a Medallist in the 'Icon Artists' category.



MARGUERITE HUMEAU

*Xeno*

2023

Bronze, mineral dust, pigments, plant-based and synthetic resin

Edition of 5

37.5 x 45 x 40 cm | 14 3/4 x 17 11/16 x 15 3/4 in.

GBP 60,000 *plus applicable taxes*





ENRICO DAVID

*Renaissance*

1996–2026

Acrylic paint on canvas

140 × 125 × 3 cm | 55 × 49 ¼ × 1 ¼ in.

143 × 128 × 4 cm | 56 ¼ × 50 ½ × 1 ½ in. (framed)

GBP 75,000 *plus applicable taxes*





BEATRIZ MILHAZES

*The Botanical Mind I*

2025

Acrylic on canvas

261.2 × 279.5 cm | 102 <sup>13</sup>/<sub>16</sub> × 110 <sup>1</sup>/<sub>16</sub> in.

USD 1,500,000 *plus applicable taxes*

Click [HERE](#) to view a video of this work



Pinacoteca de São Paulo, Brazil, presents a solo exhibition of works by Beatriz Milhazes, curated by Renato Menezes, opening 16 May 2026. The exhibition focuses on the artist's collaboration with Durham Press in New York over the past 23 years.



ANTONY GORMLEY

*PUT II*

2015

Cast iron

71 × 61 × 62 cm | 27 <sup>15</sup>/<sub>16</sub> × 24 × 24 <sup>7</sup>/<sub>16</sub> in.

GBP 500,000 *plus applicable taxes*



KMSKA, Antwerp, presents 'Geestgrond', an exhibition of works by Antony Gormley, curated by Carolyn Christov-Bakargiev, opening 23 May 2026.



IBRAHIM MAHAMA

*Brand new day*  
2025–26

Hand woven textile and metal tags on reclaimed tire ply  
188.5 × 200.5 cm | 74 ¼ × 79 in.

EUR 100,000 *plus applicable taxes*



Art Basel has announced a major public commission by Ibrahim Mahama, which will be unveiled this summer at their flagship fair in Basel, Switzerland. A winner of the inaugural Art Basel Gold Awards in the 'Established Artists' category, Mahama will present a new large-scale installation on the Münsterplatz.



SARAH MORRIS

*Palantir*  
2026

Household gloss paint on canvas  
165 × 122 cm | 65 × 48 in.

USD 125,000 *plus applicable taxes*



'Snow Leopards and Skyscrapers', Sarah Morris' latest exhibition is on show at White Cube Bermondsey until 9 May 2026.

KATHARINA GROSSE

*Untitled*

2026

Acrylic on canvas

206 × 152 cm | 81 × 59 ¾ in.

EUR 260,000 *plus applicable taxes*



White Cube Bermondsey is pleased to present an exhibition of works by Katharina Grosse, open until 31 May 2026, her first with the gallery since her 2002 exhibition at the former Hoxton Square location.

# JULIE CURTISS

*Left:*

*Creamy Locks*

2025

Airbrushed acrylic and gouache on paper

35.9 × 26 cm | 14 1/8 × 10 1/4 in.

49.5 × 39.4 × 3.2 cm | 19 1/2 × 15 1/2 × 1 1/4 in. (framed)

*Right:*

*Corset*

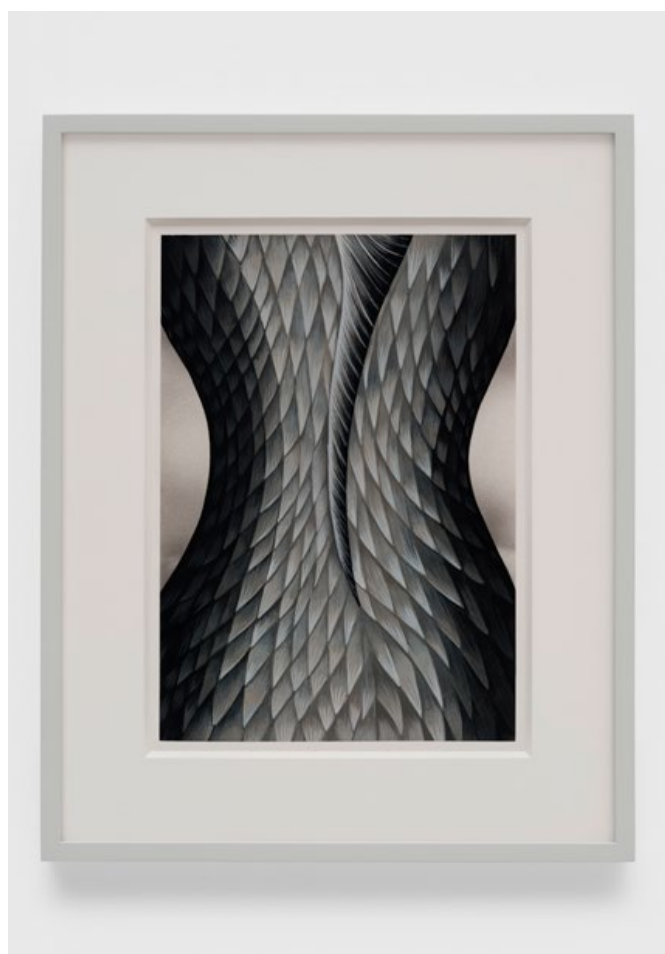
2025

Airbrushed acrylic and gouache on paper

35.9 × 26 cm | 14 1/8 × 10 1/4 in.

49.5 × 39.4 × 3.2 cm | 19 1/2 × 15 1/2 × 1 1/4 in. (framed)

Each: USD 35,000 *plus applicable taxes*



FIRENZE LAI

*Vertical Vertigo*

2026

Oil on canvas

170 × 135 cm | 67 × 53 ¼ in.

GBP 200,000 *plus applicable taxes*





KLÁRA HOSNEDLOVÁ

*Untitled (from the series embrace)*

2025

Cotton thread, stainless steel, stone and mineral dust,  
synthetic resin, styrofoam and metal construction

258 x 64 x 25 cm | 101 1/2 x 25 1/4 x 9 3/4 in.

EUR 200,000 *plus applicable taxes*



The newly unveiled site-specific installation by Klára Hosnedlová, created for the New Museum's new Atrium Stair, marks the artist's first museum project in the United States.



MARINA RHEINGANTZ

*Salvador*

2026

Oil on canvas

190 × 250 cm | 74 ¾ × 98 ½ in.

USD 250,000 *plus applicable taxes*





ELLEN ALTFEST

*Wavy Pine*

2024–25

Oil on canvas

20.8 × 18.6 cm | 8 <sup>3</sup>/<sub>16</sub> × 7 <sup>5</sup>/<sub>16</sub> in.

22.9 × 21 × 4 cm | 9 × 8 <sup>1</sup>/<sub>4</sub> × 1 <sup>5</sup>/<sub>16</sub> in. (framed)

USD 85,000 *plus applicable taxes*



CINGA SAMSON

*Isiganeko*

2026

Oil on canvas

219.7 × 260.4 cm | 86 ½ × 102 ½ in.

224.8 × 264.5 × 7 cm | 88 ½ × 104 ⅛ × 2 ¾ in. (framed)

USD 300,000 *plus applicable taxes*





DANICA LUNDY

*Remedy*

2026

Oil on canvas

182.9 × 121.9 cm | 72 × 48 in.

USD 95,000 *plus applicable taxes*





CERITH WYN EVANS

*eclipse*

2005

'Negative' neon

Edition of 10

10.1 × 36.1 cm | 4 × 14 <sup>3</sup>/<sub>16</sub> in.

GBP 18,000 *plus applicable taxes*



EMMI WHITEHORSE

*Untitled*  
1991

Mixed media on paper mounted on canvas  
130.2 × 100.3 cm | 51 ¼ × 39 ½ in.

USD 150,000 *plus applicable taxes*





MARGUERITE HUMEAU

*Orisons (past and future rainmaking songs and dances,  
thunderbirds flapping their wings, the ghosts of sandhill  
cranes who don't come anymore)*

2022

Pigment and charcoal on paper

140 × 200 cm | 55 ½ × 78 ¾ in.

147.5 × 207 × 6 cm | 58 | ⅙ × 81 ½ × 2 ⅜ in. (framed)

GBP 65,000 *plus applicable taxes*



TRACEY EMIN

*Trying to forget I*  
2014

Patinated Bronze

Edition of 9

9 × 19.3 × 8.5 cm | 3 <sup>5</sup>/<sub>16</sub> × 7 <sup>5</sup>/<sub>8</sub> × 3 <sup>3</sup>/<sub>8</sub> in.

GBP 70,000 *plus applicable taxes*



TUNJI ADENIYI-JONES

*Bright Orange Double Dive*

2025

Oil on canvas

177.8 × 127 cm | 70 × 50 in.

180.3 × 129.5 × 6.7 cm | 71 × 51 × 2 5/8 in. (framed)

USD 85,000 *plus applicable taxes*



LOUISE GIOVANELLI

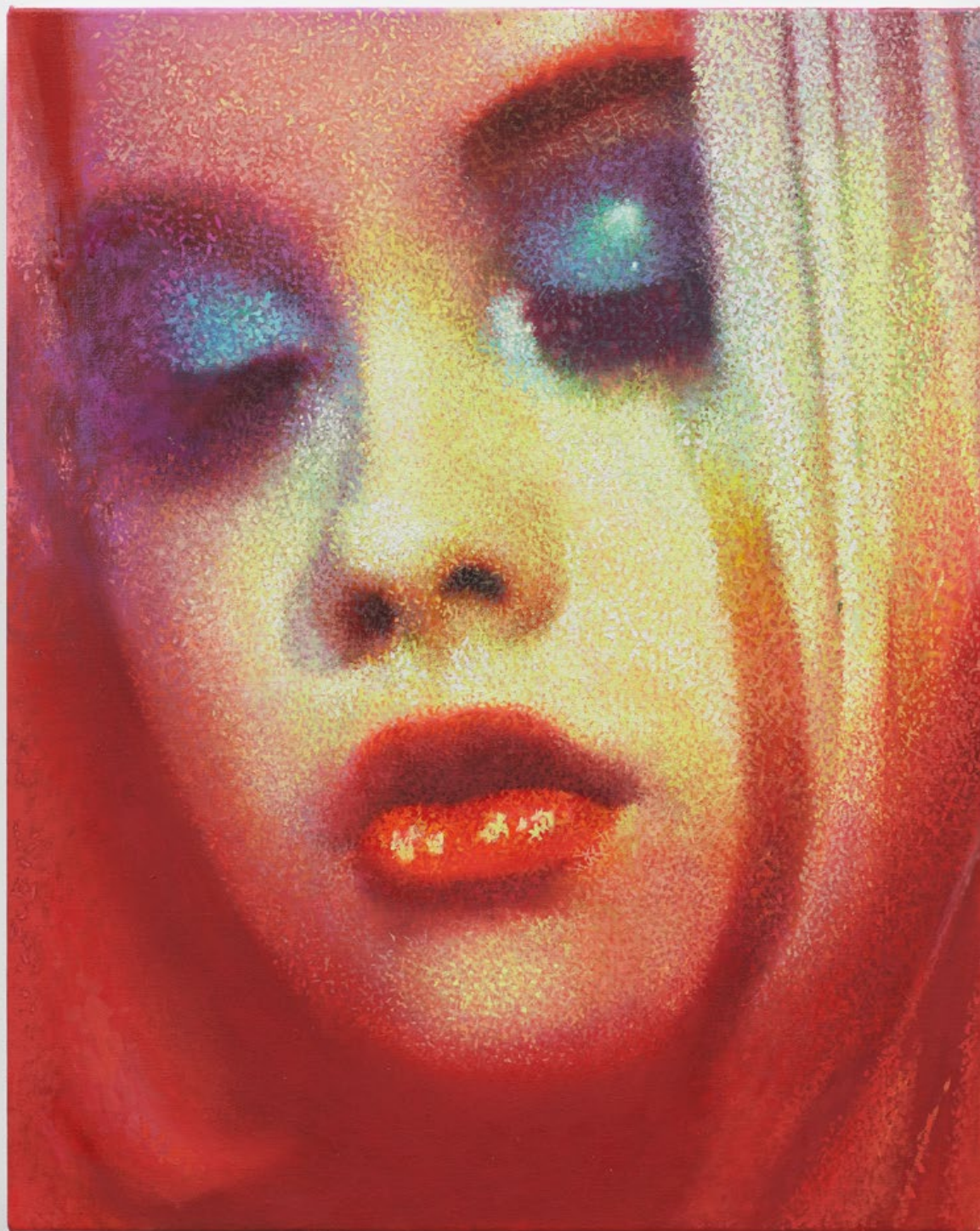
*Lux*

2025

Oil on linen

50 × 40 cm | 19 1/16 × 15 3/4 in.

GBP 38,000 *plus applicable taxes*

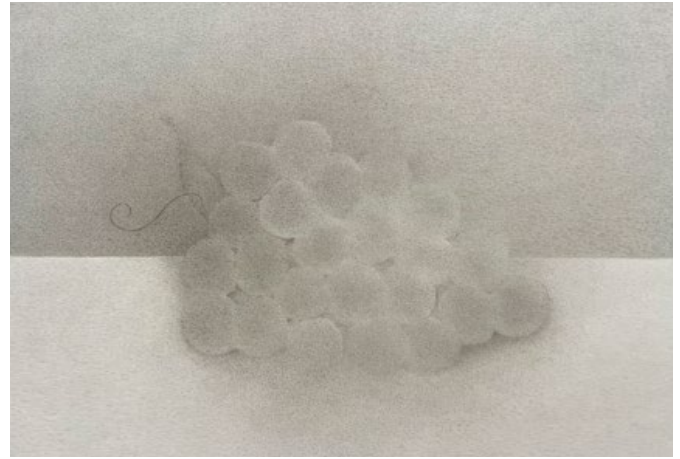


## GALLERY EXHIBITIONS



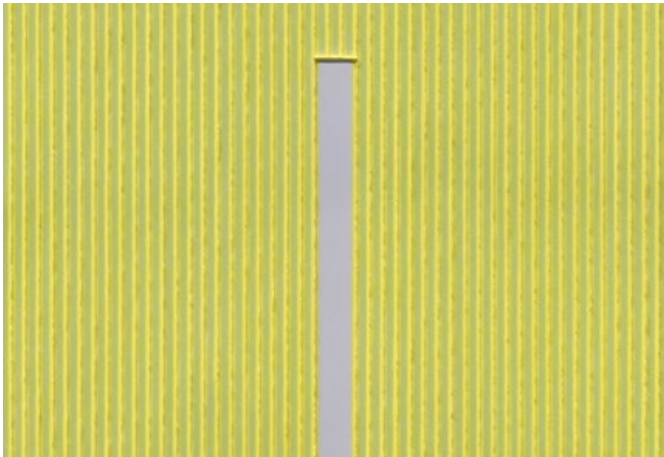
Katharina Grosse  
*I Set Out, I Walked Fast*

21 April – 31 May 2026  
Bermondsey, London



Shao Fan  
Refrain / 复沓

22 May – 27 June 2026  
Mason's Yard, London



Park Seo-Bo

15 April – 30 May 2026  
Paris



David Hammons  
and Jannis Kounellis

1 May – 13 June 2026  
New York



*Duett:*  
Takis and Nam June Paik

2 May – 5 June 2026  
Seoul



Alia Ahmad  
*In Time, A Bloom* / مع الوقت، تزهّر

20 May – 27 June 2026  
Hong Kong

## GALLERY INFORMATION

### BERMONDSEY, LONDON

144 – 152 Bermondsey Street  
London SE1 3TQ  
+44 (0) 207 930 5373

Opening Times:  
Tuesday – Saturday, 10am – 6pm  
Sunday, 12 – 6pm

### MASON'S YARD, LONDON

25 – 26 Mason's Yard  
London SW1Y 6BU  
+44 (0) 207 766 3550

Opening Times:  
Tuesday – Saturday, 10am – 6pm

### PARIS

10 avenue Matignon  
75008 Paris  
+33 (0) 1 87 39 85 97  
*By appointment*

Opening Times:  
Tuesday – Saturday,  
10am – 12.30pm, 1.30 – 6pm

### NEW YORK

1002 Madison Avenue  
New York, NY 10075  
+1 212 750 4232

Opening Times:  
Tuesday – Saturday, 10am – 6pm

### HONG KONG

50 Connaught Road Central  
Hong Kong  
+ 852 2592 2000

Opening Times:  
Tuesday – Saturday, 11am – 7pm

### SEOUL

6, Dosan-daero 45-gil  
Seoul  
+82 (0) 2 6438 9093

Opening Times:  
Tuesday – Saturday, 10am – 6pm

All artworks © the artist, 2026

This sales documentation is provided for information only.  
All sales of artworks are subject to White Cube's standard  
invoice terms and ARR if applicable.