

WHITE CUBE

The background is a vibrant, abstract collage of various colors and textures. It features a mix of geometric shapes like squares, rectangles, and circles, alongside organic, brushstroke-like patterns. The color palette is diverse, including shades of green, yellow, blue, red, and purple. The overall effect is a dense, layered composition that serves as a backdrop for the event title.

# ART BASEL MIAMI BEACH

6 – 10 December 2023

MICHAEL ARMITAGE

GEORG BASELITZ

JULIE CURTISS

LYNNE DREXLER

TRACEY EMIN

CERITH WYN EVANS

SARA FLORES

THEASTER GATES

GILBERT & GEORGE

ANTONY GORMLEY

DAVID HAMMONS

MONA HATOUM

DAMIEN HIRST

RICHARD HUNT

ROBERT IRWIN

IMI KNOEBEL

CHRISTIAN MARCLAY

TIONA NEKKIA MCCLODDEN

JULIE MEHRETU

HARLAND MILLER

SARAH MORRIS

ISAMU NOGUCHI

LYGIA PAPE

PARK SEO-BO

MAGNUS PLESSEN

ED RUSCHA

DORIS SALCEDO

SALVO

RAQIB SHAW

TAKIS

DANH VO

JEFF WALL

ANDY WARHOL

LYNETTE YIADOM-BOAKYE

Stand A23

Miami Beach Convention Center

1901 Convention Center Drive

Miami Beach, FL 33139

# RICHARD HUNT

*Years of Pilgrimage*

1999

Welded stainless steel

113 × 152.4 × 111.8 cm | 44 ½ × 60 × 44 in.

USD 1,200,000 *plus applicable taxes*

Click [HERE](#) to view a video of this work.





White Cube is pleased to announce global representation of Richard Hunt (b. 1935, Chicago, Illinois), one of the leading American sculptors of the 20th century. The artist's first solo exhibition with the gallery will take place in Spring 2024 at White Cube New York.





LYNETTE YIADOM-BOAKYE

*Light of The Lit Wick*

2017

Oil on linen

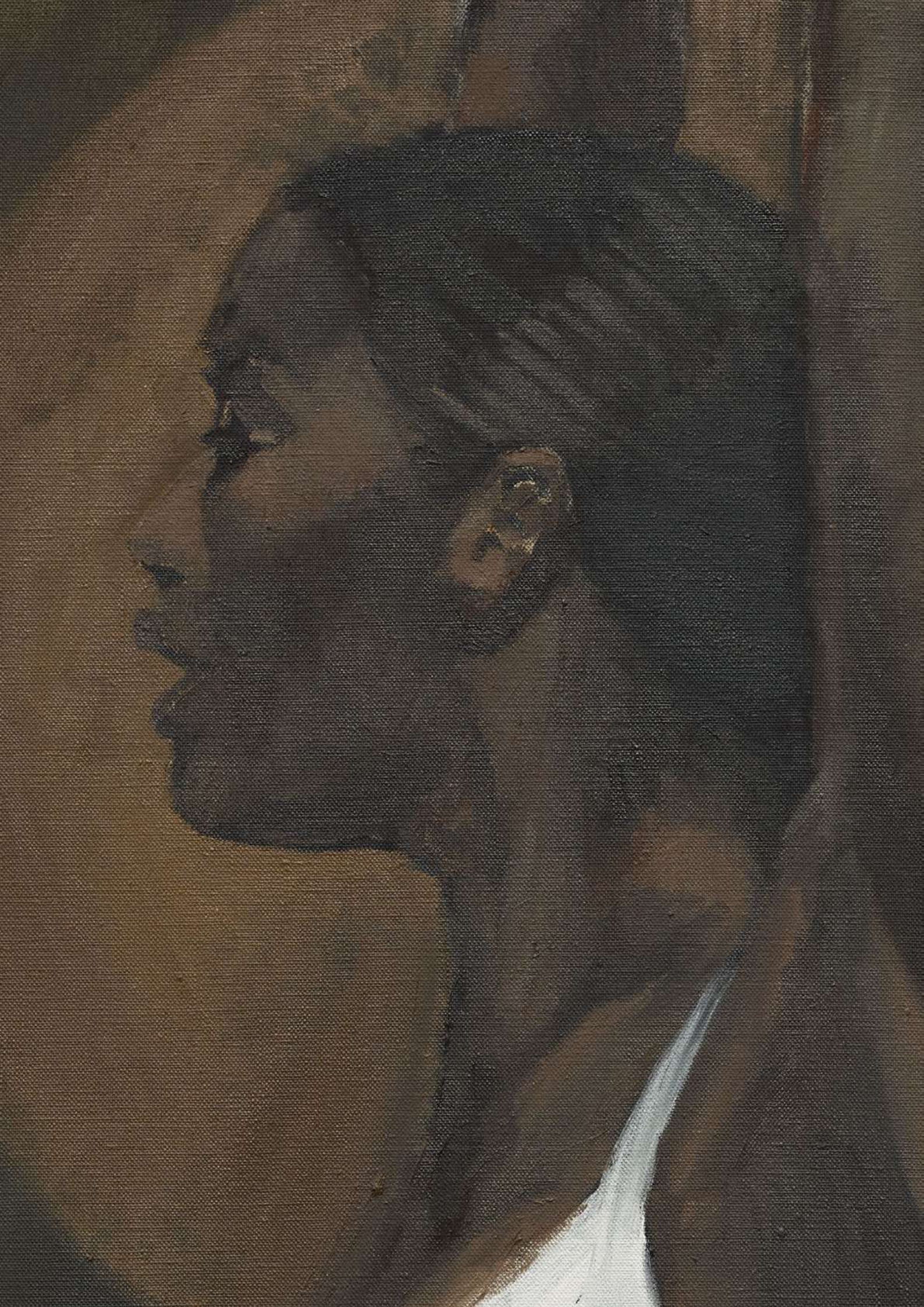
201 x 130.5 cm | 79 1/8 x 51 3/8 in.

202 x 132 x 6.5 cm | 79 1/2 x 51 15/16 x 2 5/16 in. (framed)

*Price upon application*









LYGIA PAPE

*Metallic Ttéia (#3)*

2003

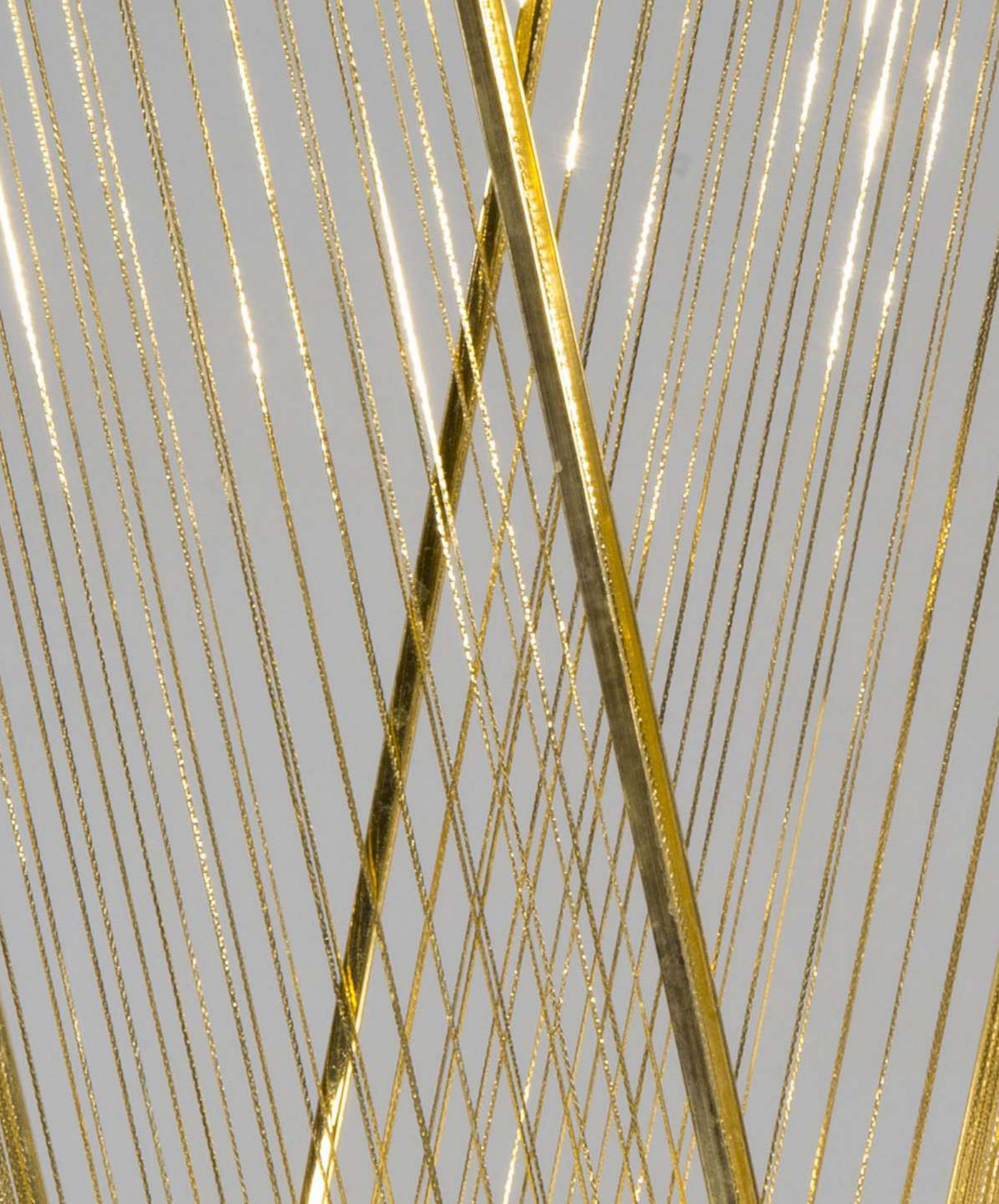
Gold-plated copper

49 × 33 × 28 cm | 19 <sup>5</sup>/<sub>16</sub> × 13 × 11 in.

USD 450,000 *plus applicable taxes*







‘They [the *Ttéia*] are always in a permanent flux of transformation.’

LYGIA PAPE



# GEORG BASELITZ

*Bandit (Remix)*

2007

Oil on canvas

300 × 250 cm | 118  $\frac{1}{8}$  × 98  $\frac{3}{16}$  in.

304 × 254.7 × 5 cm | 119  $\frac{1}{16}$  × 100  $\frac{1}{4}$  × 1  $\frac{15}{16}$  in. (framed)

EUR 1,650,000 *plus applicable taxes*

Click [HERE](#) to view a video of this work



A major solo exhibition entitled 'Georg Baselitz: Sculptures 2011–2015' is currently on view until 7 January 2024 at the Serpentine Galleries, London.





# TRACEY EMIN

*Feeling Pregnant III*

2005

Fabric, wood and metal

Dimensions variable

USD 700,000 *plus applicable taxes*

Click [HERE](#) to view a video of this work.



*Feeling Pregnant III* was included in Tracey Emin's first major retrospective 'Tracey Emin: 20 Years' at the Scottish National Gallery of Modern Art in Edinburgh between 1 August – 9 November 2008.



# MICHAEL ARMITAGE

*Accident*

2015

Oil on Lubugo bark cloth

170.2 × 221 cm | 67 × 87 in.

USD 2,950,000 *plus applicable taxes*

Click [HERE](#) to view a video of this work.





Michael Armitage will be included in the group show 'The Time is Always Now: Artists Reframe the Black Figure' at the National Portrait Gallery in London between 22 February – 19 May 2024.





DANH VO

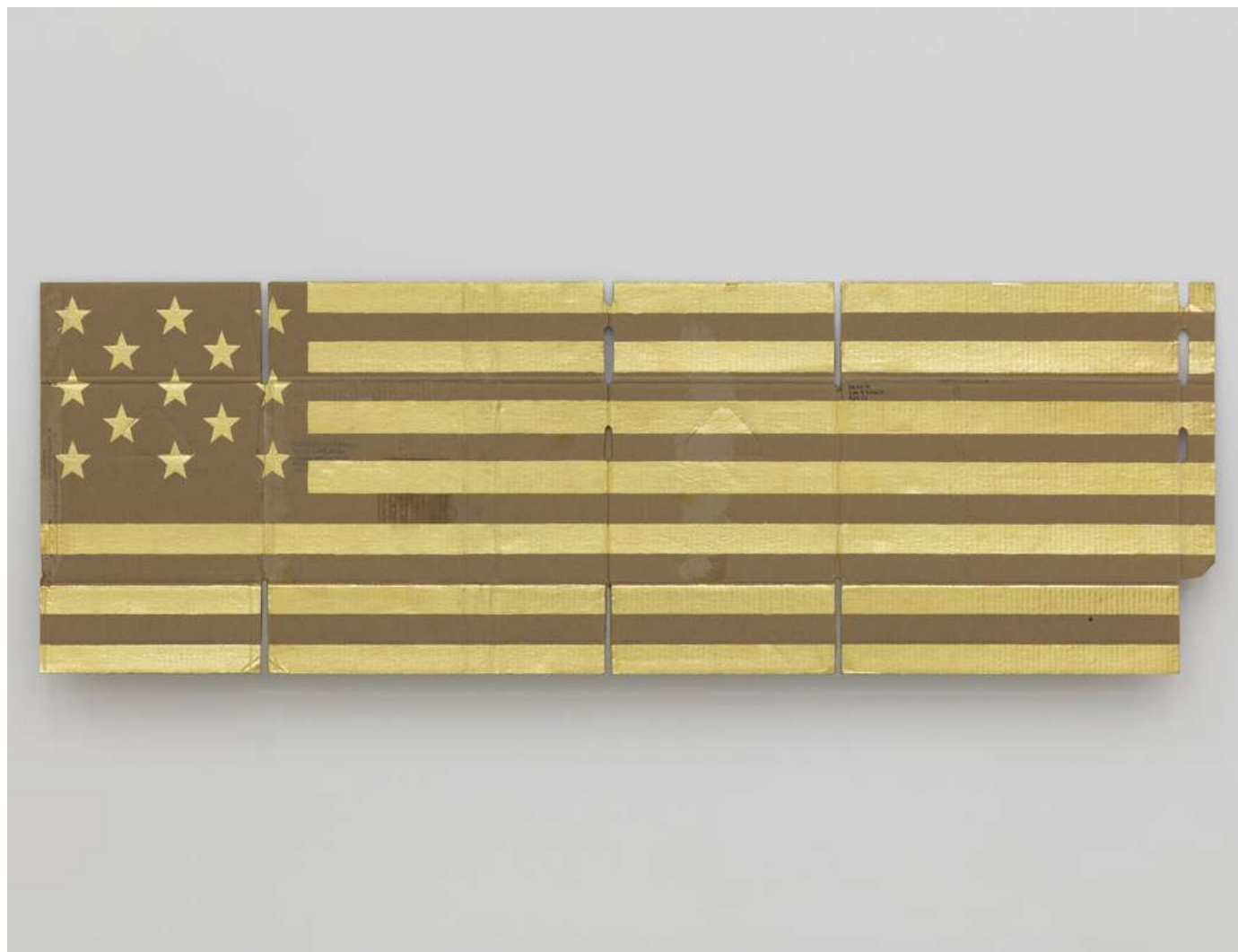
*Untitled*

2016

Gold on cardboard

45 × 131.5 cm | 17 <sup>1</sup>/<sub>16</sub> × 51 <sup>3</sup>/<sub>4</sub> in.

EUR 320,000 *plus applicable taxes*



LYNNE DREXLER

*Maui Melody*

1968

Oil on canvas

207 x 177.8 cm | 81 ½ x 70 in.

*Price upon application*

Click [HERE](#) to view a video of this work.





White Cube is pleased to announce representation of the Lynne Drexler Archive. The gallery will be working with the late-artist's archive globally, outside of the US. White Cube will present solo exhibitions of Lynne Drexler's paintings in November 2024, at Mason's Yard in London and Hong Kong.



DORIS SALCEDO

*Untitled*

2023

Cloth shirts with plaster and steel

174 × 26.7 × 40.6 cm | 68 ½ × 10 ½ × 16 in.

USD 475,000 *plus applicable taxes*





Doris Salcedo's work is included in the group exhibition 'Going Dark: The Contemporary Figure at the Edge of Visibility' on view at the Solomon R. Guggenheim Museum, New York until 7 April 2024.





## LYGIA PAPE

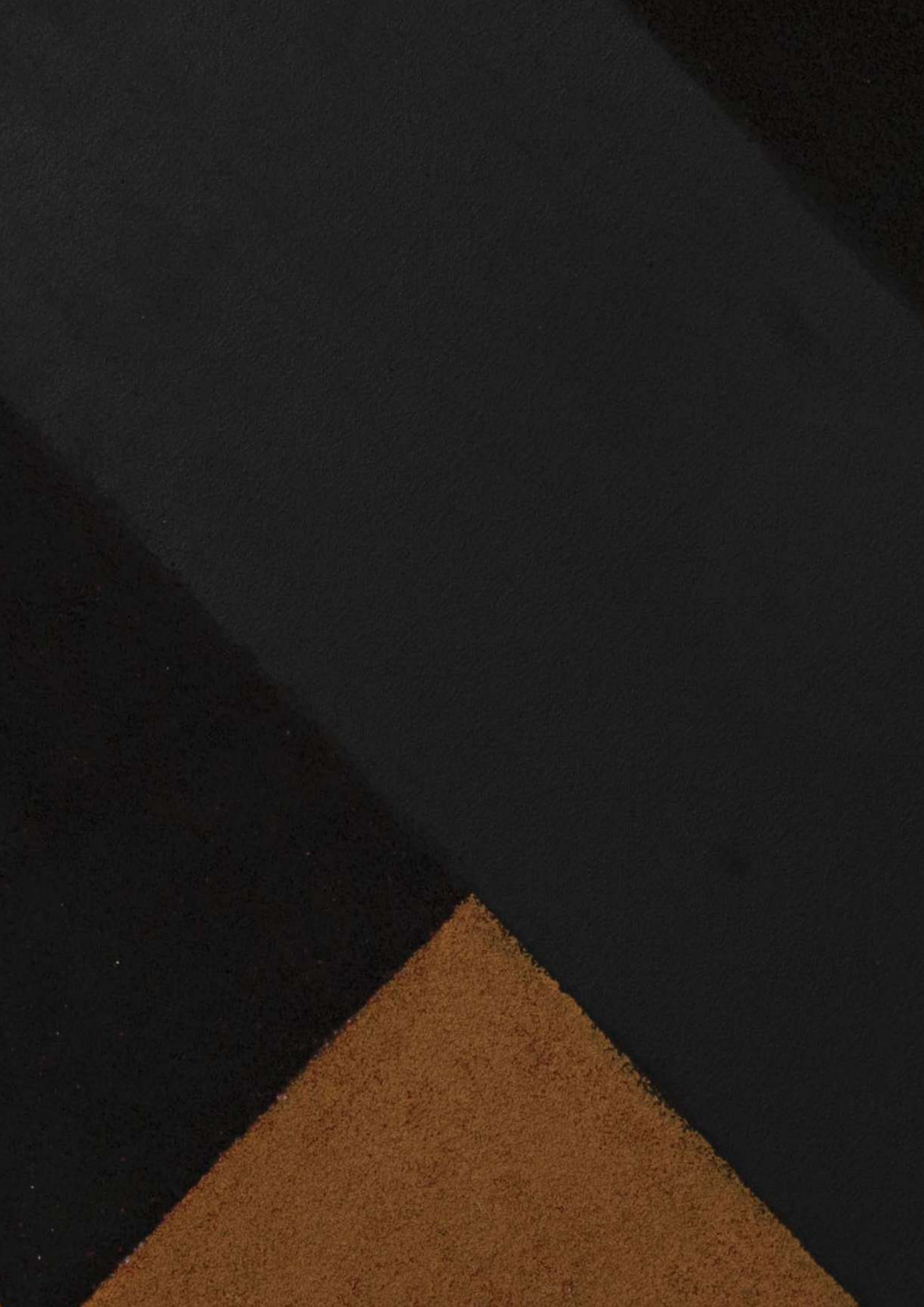
*Canvas*  
1987

Acrylic paint and marble powder on canvas  
100 × 100 cm | 39 <sup>3</sup>/<sub>8</sub> × 39 <sup>3</sup>/<sub>8</sub> in.

USD 800,000 *plus applicable taxes*

Click [HERE](#) to view a video of this work.







ANTONY GORMLEY

*TIE*

2022

Cast iron

179 × 50.8 × 44.1 cm | 70 ½ × 20 × 17 ¾ in.

GBP 600,000 *plus applicable taxes*



Antony Gormley's solo exhibition 'Body Politic' is currently on view at White Cube Bermondsey until 28 January 2024. Please click [HERE](#) to view the exhibition.





PARK SEO-BO

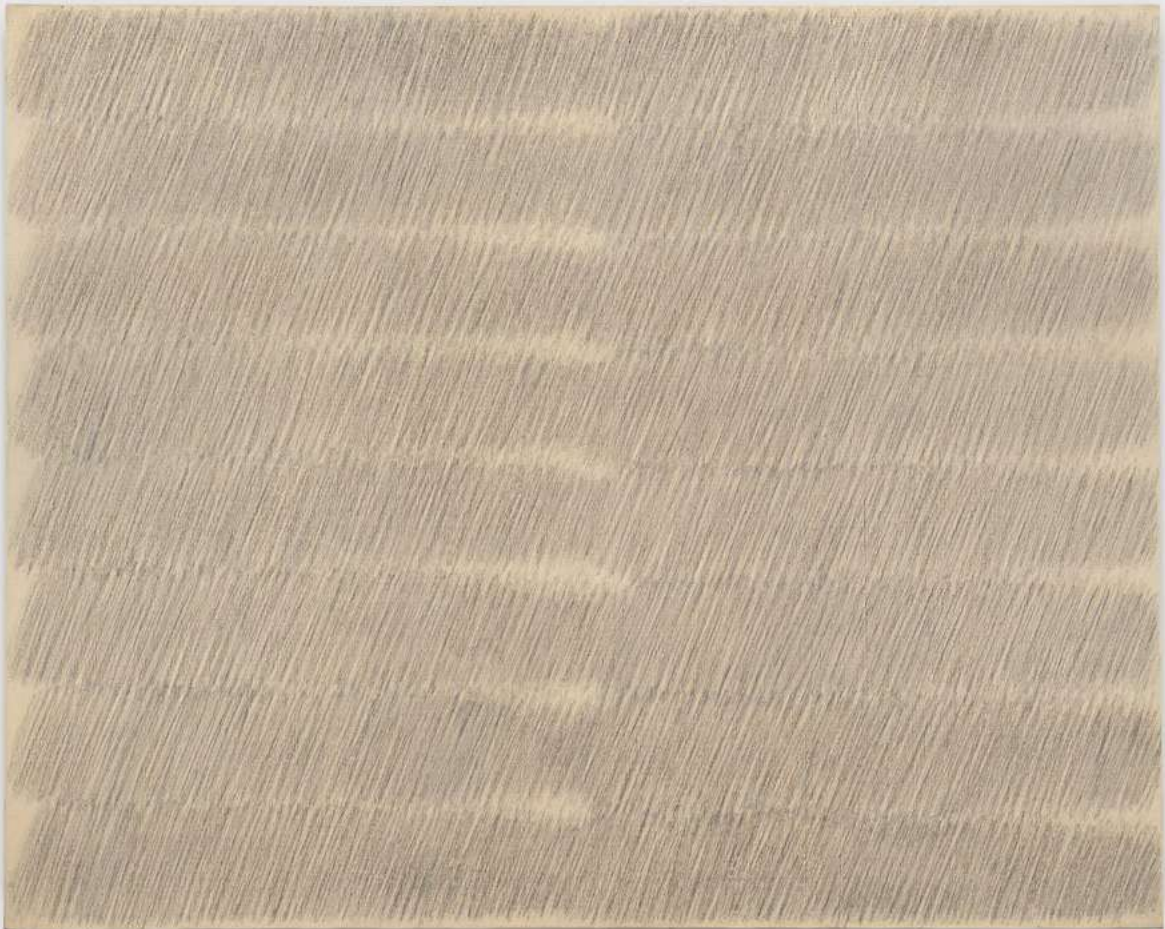
*Ecriture No. 96-75*

1975

Pencil and oil on hemp cloth

130 x 162 cm | 51  $\frac{3}{16}$  x 63  $\frac{3}{4}$  in.

USD 1,600,000 *plus applicable taxes*







‘I want to reduce the idea and emotion in my work to express only that. I want to reduce and reduce – to create pure emptiness.’

PARK SEO-BO



THEASTER GATES

*White Diagonal Study with Blue and Red*  
2023

Industrial oil-based enamel, rubber torch down, bitumen, wood  
and copper

102.2 x 101.9 x 15.2 cm | 40 ¼ x 40 ⅝ x 6 in.

USD 275,000 *plus applicable taxes*



A solo exhibition of works by Theaster Gates will open at White Cube New York on 26 January and be on view until 2 March 2024.





SARAH MORRIS

*Snow [Pinecone]*

2023

Household gloss paint on canvas

90 x 90 cm | 35 <sup>7</sup>/<sub>16</sub> x 35 <sup>7</sup>/<sub>16</sub> in.

USD 125,000 *plus applicable taxes*



'All Systems Fail' by Sarah Morris is a touring exhibition currently on view at Kunstmuseen Krefeld / Haus Esters, Haus Lange, in Germany, from October 2023 to March 2024. A publication with the same title was launched in November 2023.

# DAMIEN HIRST

*Beautific*

2008

Butterflies and household gloss on canvas

Diameter: 152.4 cm | 60 in.

Diameter: 192.5 cm | 75 <sup>13</sup>/<sub>16</sub> in. (framed)

USD 1,250,000 *plus applicable taxes*









# ANDY WARHOL

*Prince (Orange Prince)*

c. 1984

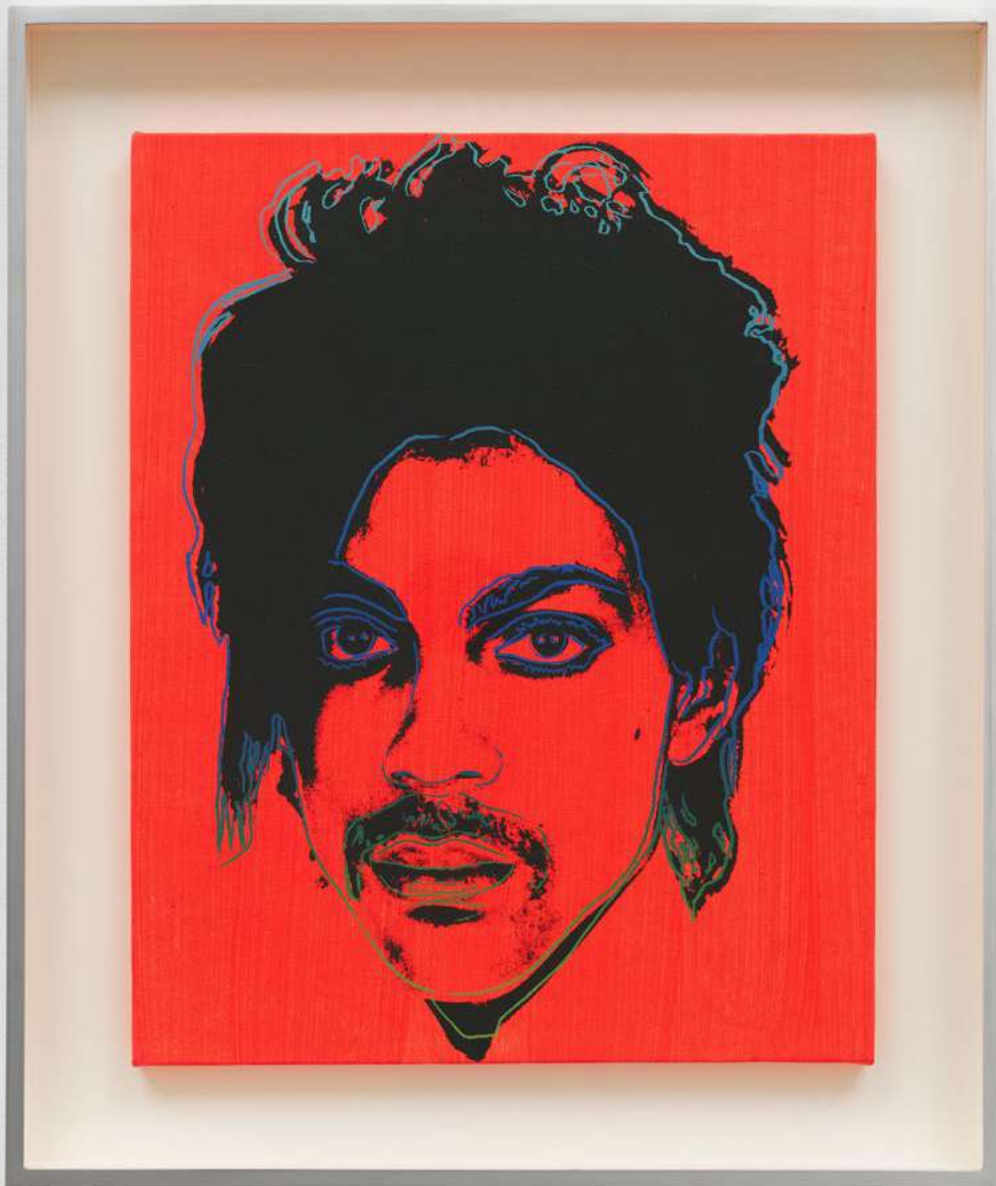
Synthetic polymer paint and silkscreen ink on canvas

50.8 x 40.6 cm | 20 x 16 in.

64 x 54 x 6 cm | 25 <sup>3</sup>/<sub>16</sub> x 21 <sup>1</sup>/<sub>4</sub> x 2 <sup>3</sup>/<sub>8</sub> in. (framed)

USD 2,250,000 *plus applicable taxes*

Click [HERE](#) to view a video of this work









CHRISTIAN MARCLAY

*Vertical Cuts (White Door)*

2023

Altered wooden door

194.6 × 27.5 × 13.5 cm | 76 <sup>5</sup>/<sub>8</sub> × 10 <sup>13</sup>/<sub>16</sub> × 5 <sup>5</sup>/<sub>16</sub> in.

USD 225,000 *plus applicable taxes*





A selection of works by Christian Marclay are exhibited at PROA21, Fundación PROA, Argentina until 31 January 2024.



JULIE CURTISS

*Silent Companion*

2023

Acrylic and oil on canvas

76.2 × 63.5 cm | 30 × 25 in.

USD 70,000 *plus applicable taxes*





# TRACEY EMIN

*You Let me Fall*

2022

Acrylic on canvas

122 x 122 cm | 48 <sup>1</sup>/<sub>16</sub> x 48 <sup>1</sup>/<sub>16</sub> in.

123.6 x 123.6 x 4.4 cm | 48 <sup>1</sup>/<sub>16</sub> x 48 <sup>1</sup>/<sub>16</sub> x 1 <sup>3</sup>/<sub>4</sub> in. (framed)

GBP 600,000 *plus applicable taxes*





'Lovers Grave', a solo exhibition of new paintings by Tracey Emin is on view at White Cube New York until 13 January 2024. Click [HERE](#) to view the exhibition.





MONA HATOUM

*Cappello per due II*

2013

Straw, wood and metal

86.5 x 148.5 x 50.2 cm | 34  $\frac{1}{16}$  x 58  $\frac{7}{16}$  x 19  $\frac{3}{4}$  in.

GBP 190,000 *plus applicable taxes*





A large installation by Mona Hatoum is currently on view in the group exhibition 'Water Ways', at Ruby City, San Antonio, TX. The exhibition will remain on view through 28 June 2024.





# MAGNUS PLESSEN

*Untitled (Fig. 14)*

2021

Oil and charcoal on canvas

197 × 208 cm | 77 <sup>7</sup>/<sub>16</sub> × 81 <sup>7</sup>/<sub>8</sub> in.

EUR 120,000 *plus applicable taxes*



ISAMU NOGUCHI

*Folding In & Out*

1984 (2023)

Bronze plate

Edition of 6 and 2 APs

82.2 × 17.8 × 15.6 cm | 32 <sup>3</sup>/<sub>8</sub> × 7 × 6 <sup>1</sup>/<sub>8</sub> in.

USD 190,000 *plus applicable taxes*





# ISAMU NOGUCHI

## *Kaki-persimmons*

1988 (2023)

Bronze plate

Edition of 8 and 2 AP's

29.8 x 38.7 x 19.7 cm | 11  $\frac{3}{4}$  x 15  $\frac{1}{4}$  x 7  $\frac{3}{4}$  in.

## *Sparrow*

1984 (2023)

Bronze plate

Edition of 6 and 2 AP's

50.2 x 44.5 x 38.7 cm | 19  $\frac{3}{4}$  x 17  $\frac{1}{2}$  x 15  $\frac{1}{4}$  in.

Each: USD 170,000 *plus applicable taxes*



ED RUSCHA

*Omaha to New York*

2000

Acrylic on linen

40.2 × 61 cm | 15 <sup>13</sup>/<sub>16</sub> × 24 in.

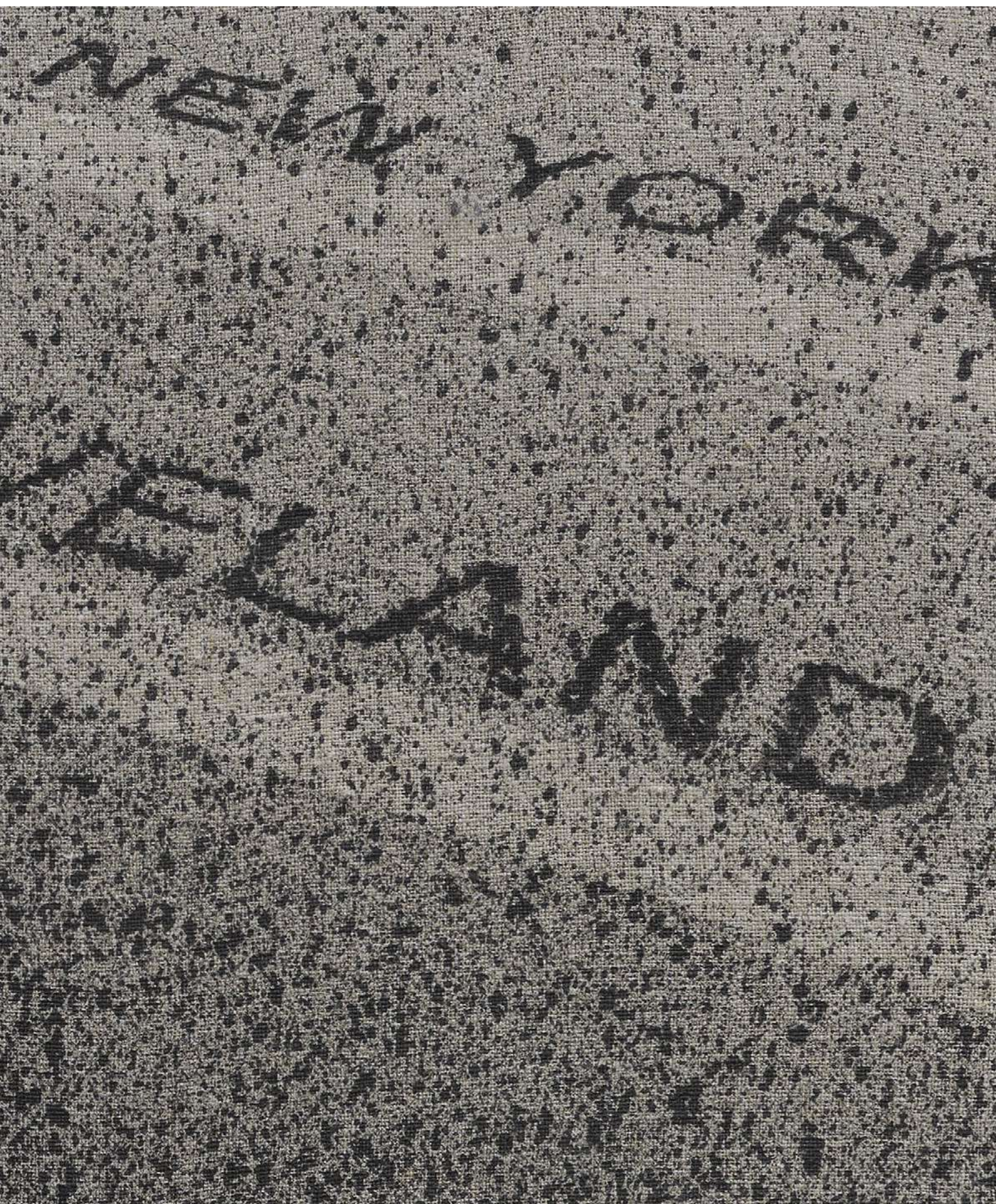
42.8 × 63.1 × 3 cm | 16 <sup>7</sup>/<sub>8</sub> × 24 <sup>13</sup>/<sub>16</sub> × 1 <sup>3</sup>/<sub>16</sub> in. (framed)

USD 650,000 *plus applicable taxes*





The Museum of Modern Art, New York is currently presenting ED RUSCHA / NOW THEN, the most comprehensive retrospective of the artist's work ever staged until 13 January 2024.





TIONA NEKKIA MCCLODDEN

*NEVER LET ME GO* | VII. *Passage*  
2023

Black cotton rope, leather, black, blue and red dye and Saphir shoe polish

124.5 × 62.5 × 5.7 cm | 49 × 24  $\frac{5}{8}$  × 2  $\frac{1}{4}$  in.

USD 75,000 *plus applicable taxes*





McClodden's work is included in 'Going Dark: The Contemporary Figure at the Edge of Visibility', a major group exhibition at Solomon R. Guggenheim Museum, New York, on view until 7 April 2024.



## LYGIA PAPE

*Tecelar*

1955

Woodcut print on Japanese paper

49.5 × 61 cm | 19 ½ × 24 in.

USD 250,000 *plus applicable taxes*

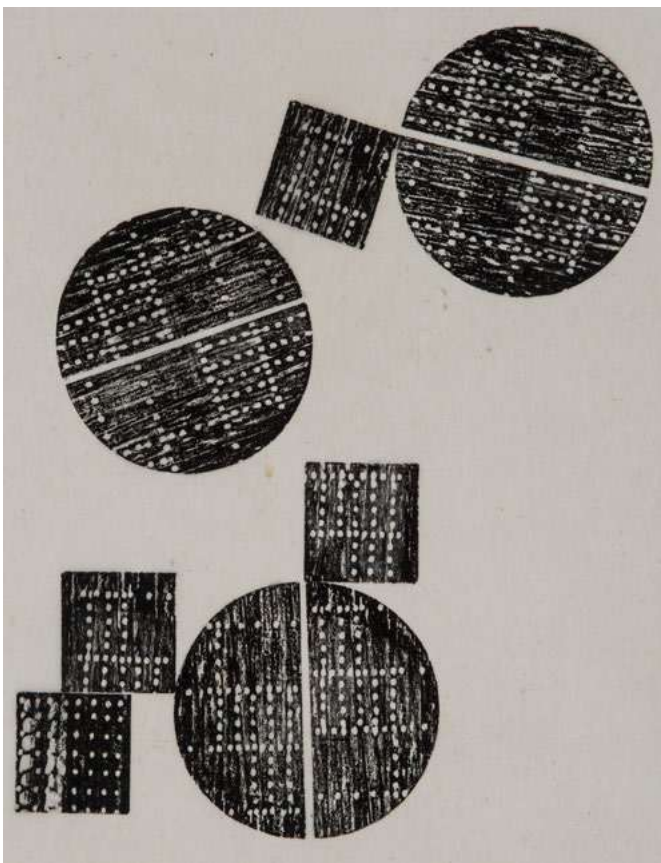
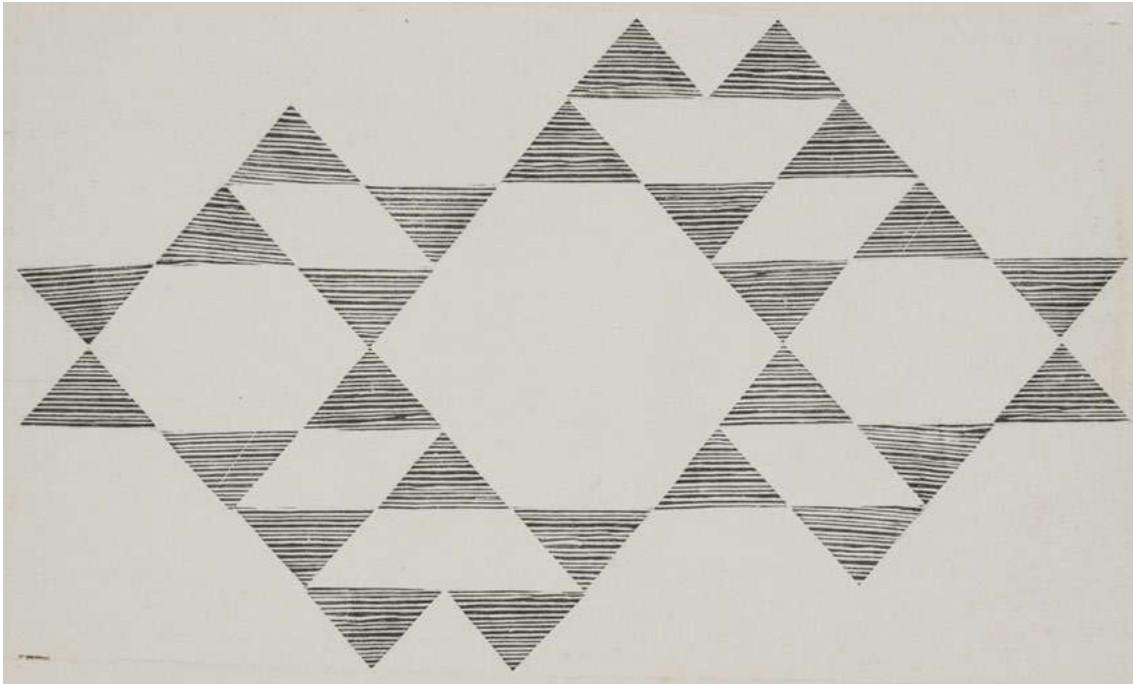
*Tecelar*

1959

Woodcut print on Japanese paper

45.8 × 30.5 cm | 18 ⅛ × 12 in.

USD 200,000 *plus applicable taxes*





GILBERT & GEORGE

STRAWBS

2022

151 × 190.5 cm | 59 <sup>7</sup>/<sub>16</sub> × 75 in.

GBP 90,000 *plus applicable taxes*



IMI KNOEBEL

*Bild 06.07.2018*

2018

Acrylic on aluminium

174 × 319 cm | 68 ½ × 125 ⅞ in.

EUR 230,000 *plus applicable taxes*







SARA FLORES

*Untitled (Peshin Maya Kené, 2023)*

2023

Vegetal dyes on wild-cotton canvas

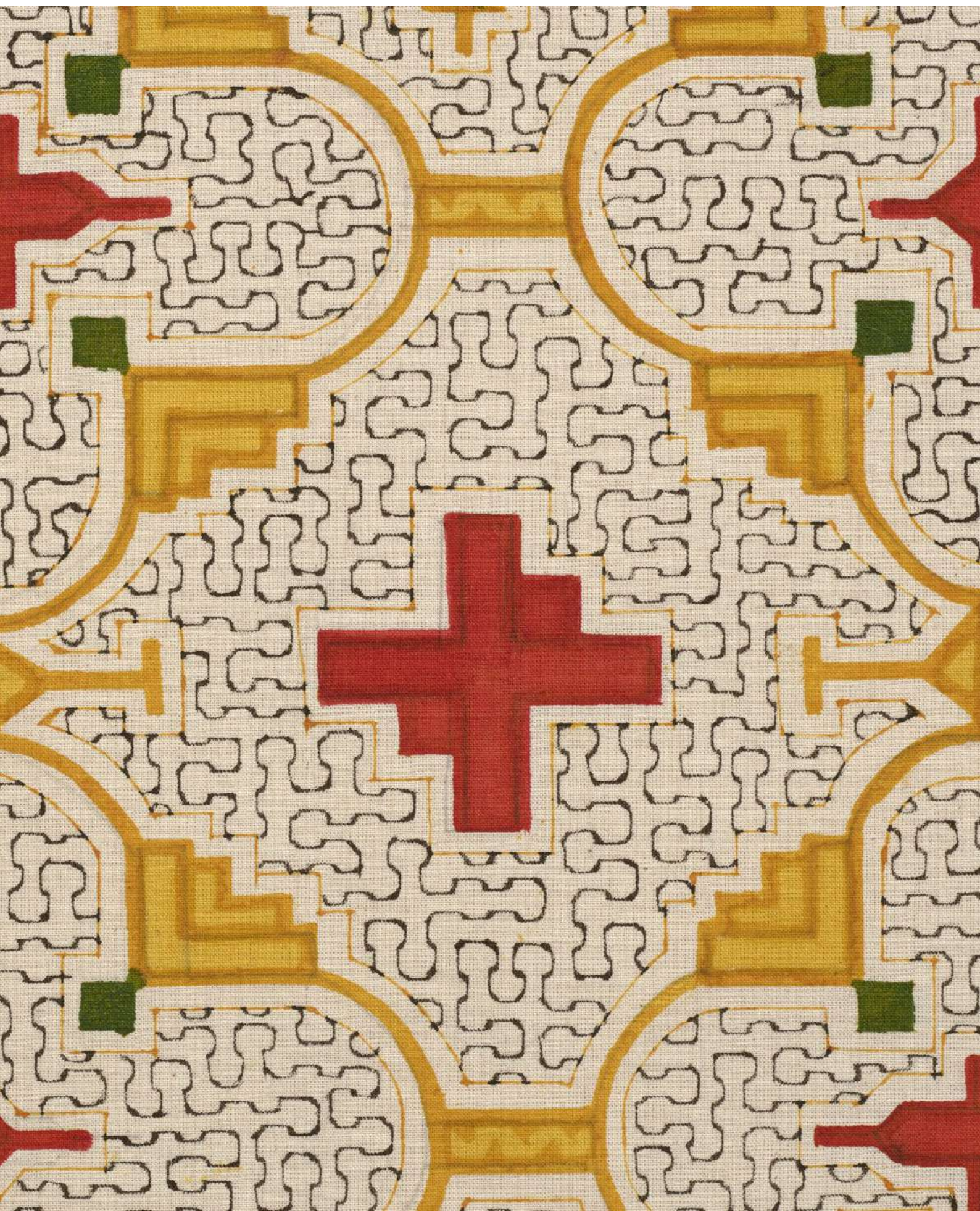
209.9 x 125.4 cm | 82 5/8 x 49 3/8 in.

USD 70,000 *plus applicable taxes*





White Cube Paris will be devoting a solo exhibition to Sara Flores between 13 December 2023 – 13 January 2024.





# JULIE MEHRETU

*Myriads, Only By Dark (unfolded body map, mathematics of droves, indigine, origin)*

2014

Multi-coloured aquatint and spit bite on Hahnemühle Museum

Etching 450 gsm

Edition of 30 and 6 APs

Four panels, each: 206.4 × 114.9 cm | 81 ¼ × 45 ¼ in.

214.6 × 123 × 5 cm | 84 ½ × 48 ⅞ × 1 ⅞ in. (framed)

USD 750,000 *plus applicable taxes*

Click [HERE](#) to view a video of this work.





Julie Mehretu's major solo exhibition at Palazzo Grassi, Venice, Italy will open on 17 March 2024 and run through 6 January 2025.





CERITH WYN EVANS

*After image Neon (transparent)*

2023

'Negative' neon

Edition of 2 and 1 AP

61.2 × 75.6 cm | 24 <sup>1</sup>/<sub>8</sub> × 29 <sup>3</sup>/<sub>4</sub> in.

GBP 50,000 *plus applicable taxes*





Espace Louis Vuitton Tokyo presents 'L>espace)(...)', a solo exhibition of works by Cerith Wyn Evans, on view until 8 January 2024.



PARK SEO-BO

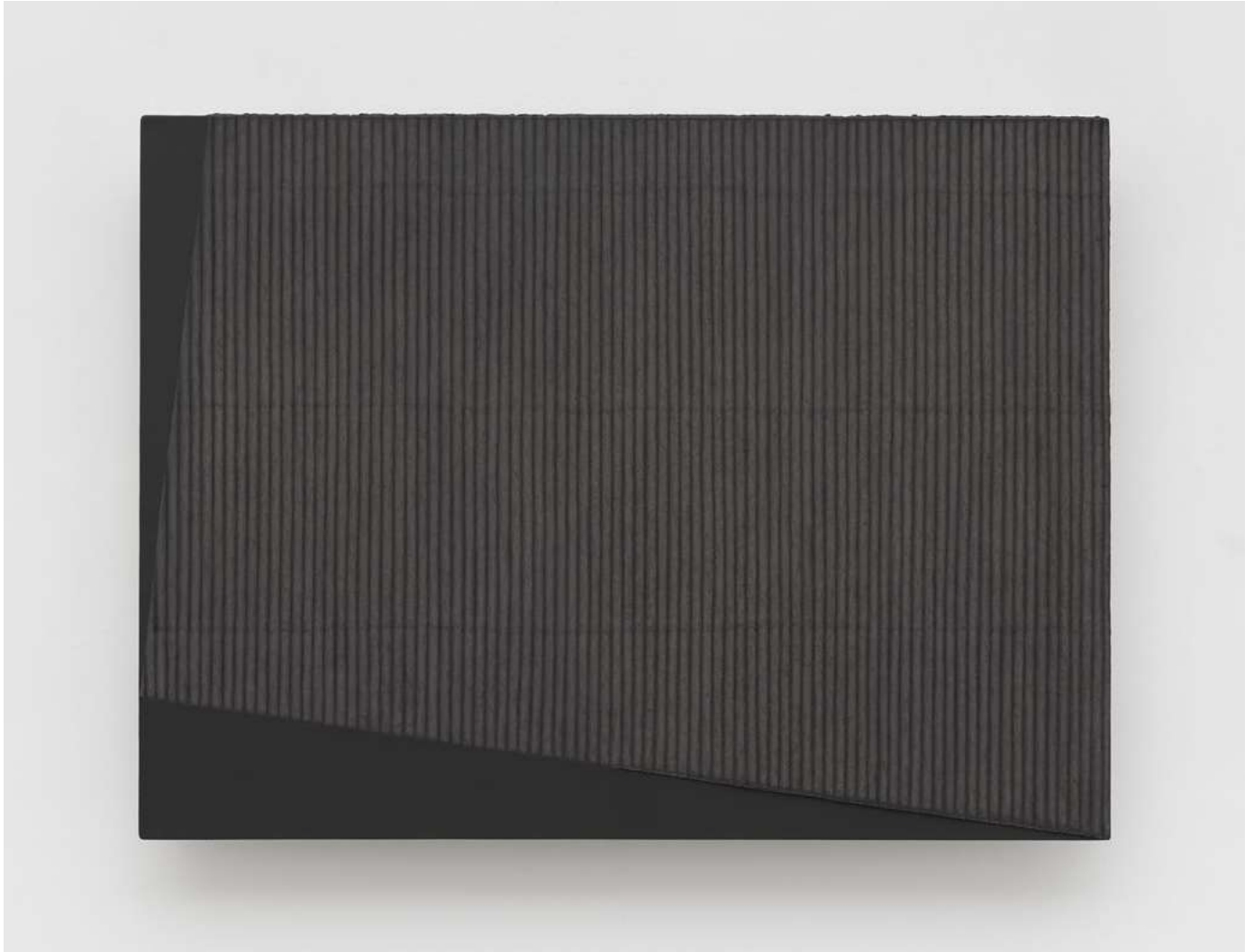
*Ecriture No. 000121*

2000

Mixed media with Korean hanji paper on canvas

97.5 × 130.5 cm | 38 <sup>3</sup>/<sub>8</sub> × 51 <sup>3</sup>/<sub>8</sub> in.

USD 430,000 *plus applicable taxes*





JEFF WALL

*Park Drive*

1993

Transparency in lightbox

Edition of 3 and 1 AP

119 x 135 x 21 cm | 46  $\frac{7}{8}$  x 53  $\frac{1}{8}$  x 8  $\frac{1}{4}$  in.

USD 160,000 *plus applicable taxes*





Opening on 28 January 2024, the Fondation Beyeler, Basel, Switzerland will devote a comprehensive solo exhibition to Jeff Wall spanning over 50 works from the 1970s to the present day.





HARLAND MILLER

24.7 / 365

2023

Oil on canvas

189.5 × 129.2 cm | 74 5⁄8 × 50 7⁄8 in.

192.1 × 131.8 × 6.3 cm | 75 5⁄8 × 51 7⁄8 × 2 1⁄2 in. (framed)

GBP 165,000 *plus applicable taxes*



White Cube returns to West Palm Beach with a solo exhibition of paintings by Harland Miller. The exhibition is on view between 30 November – 16 December 2023. Click [HERE](#) to view the exhibition.

SALVO

*Il Mattino*

2006

Oil on canvas

100 × 80 cm | 39  $\frac{3}{8}$  × 31  $\frac{1}{2}$  in.

110.2 × 90.2 × 4 cm | 43  $\frac{3}{8}$  × 35  $\frac{1}{2}$  × 1  $\frac{5}{16}$  in. (framed)

USD 360,000 *plus applicable taxes*





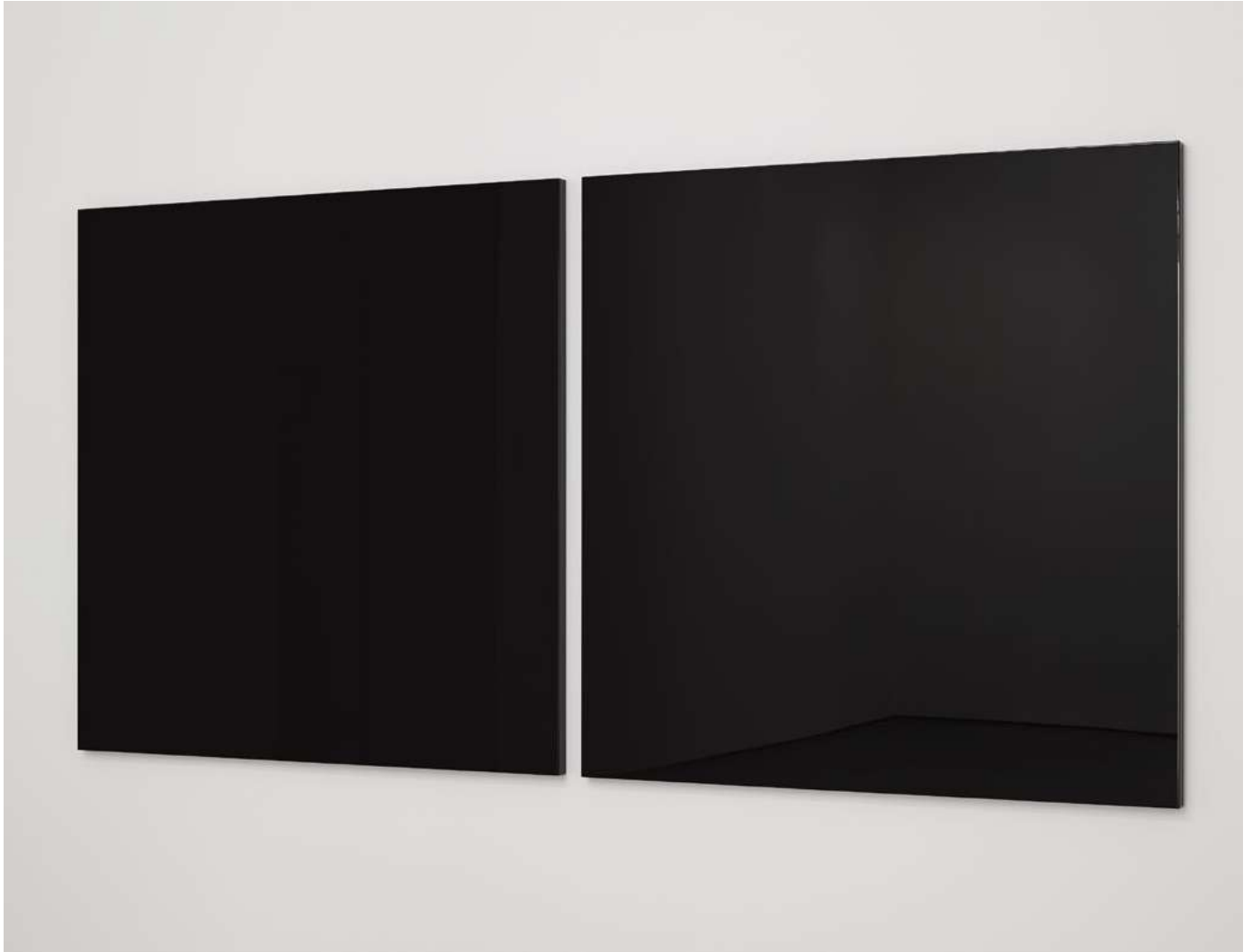
# ROBERT IRWIN

*Black Painting*

2015

Honeycomb aluminium panel with lacquer and polyurethane paint  
Dptych, each: 152.4 × 152.4 cm | 60 × 60 in.

USD 700,000 *plus applicable taxes*







DAVID HAMMONS

*Untitled (Spirit Face)*

1975

Dry pigment on paper

71.1 × 58.7 cm | 28 × 23 ½ in.

94.6 × 80.9 × 4.8 cm | 37 ¼ × 31 ⅞ × 1 ⅞ in. (framed)

USD 800,000 *plus applicable taxes*







TAKIS

*Signal*

1974

Painted iron

286 × 40 × 40 cm | 112  $\frac{5}{8}$  × 15  $\frac{3}{4}$  × 15  $\frac{3}{4}$  in.

EUR 150,000 *plus applicable taxes*







# DAMIEN HIRST

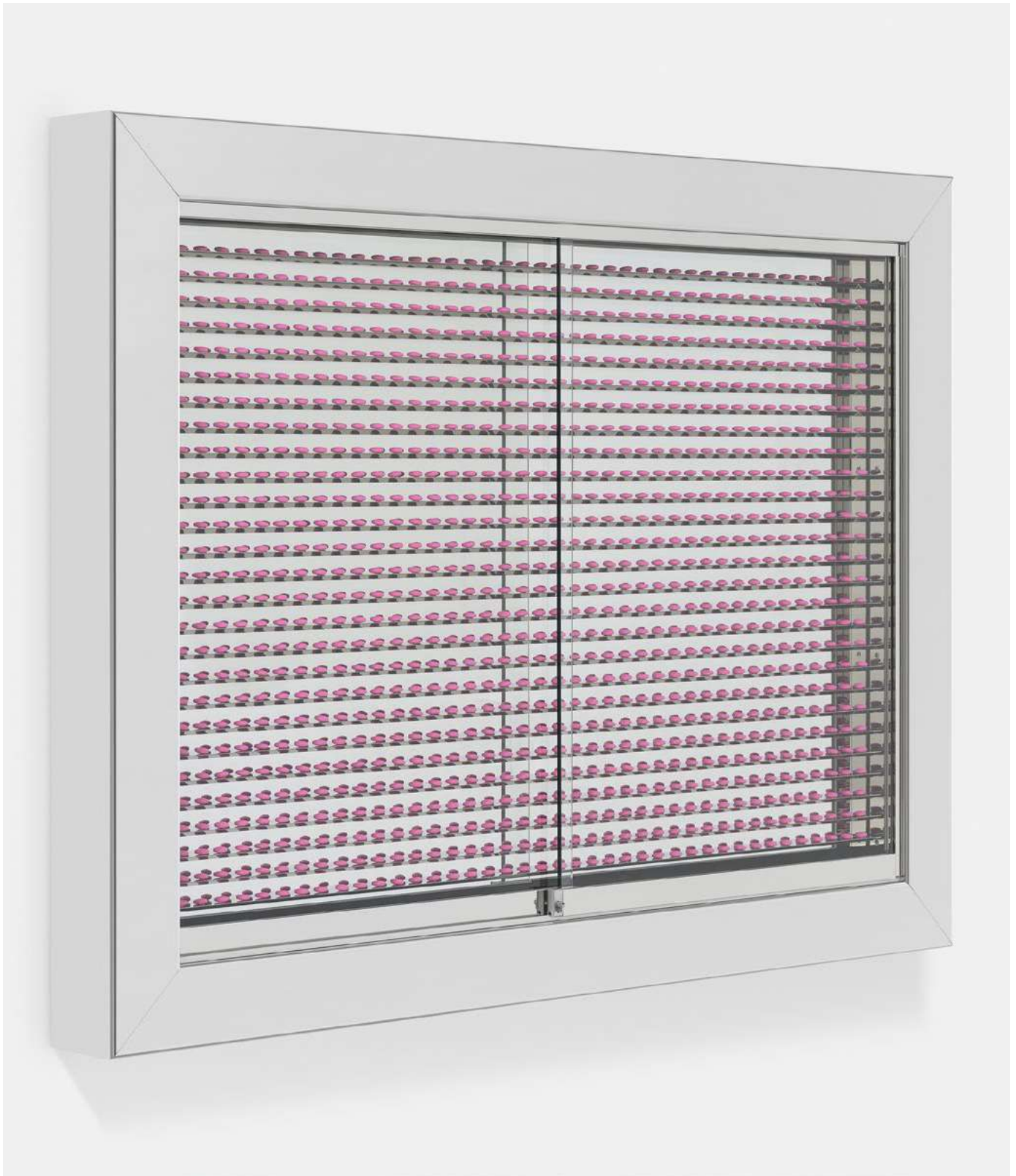
*I Give Her All My Love*

2012

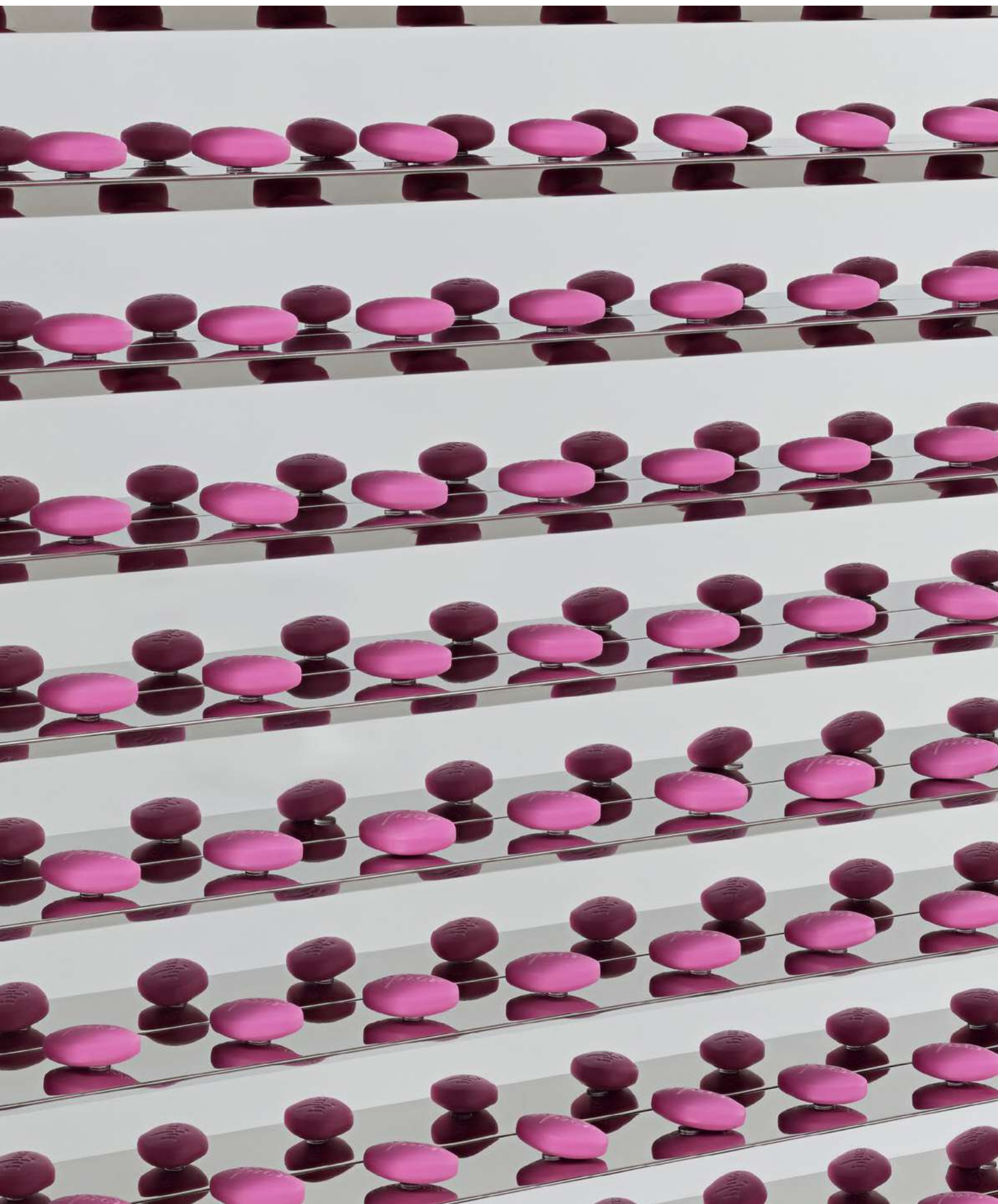
Glass, stainless steel, steel, aluminium,  
nickel and painted zamac pills

91.4 x 121.9 x 10.2 cm | 36 x 48 x 4 in.

USD 1,500,000 *plus applicable taxes*



Damien Hirst's works are on view in a major solo exhibition at the Museum of Urban and Contemporary Art (MUCA), Munich, Germany until the end of January 2024.





RAQIB SHAW

*High on Life*

2023

Acrylic liner and enamel on aluminium

Diameter: 55 cm | 21  $\frac{5}{8}$  in.

Diameter: 58 cm | 22  $\frac{13}{16}$  in. (framed)

GBP 185,000 *plus applicable taxes*



Raqib Shaw's US touring exhibition 'Ballads of East and West' is on view at the Frist Art Museum until 31 December 2023. The show will travel to the Isabella Stewart Gardner Museum in Boston, MA; The Museum of Fine Arts Houston in Texas; and The Huntington Library, Art Museum & Botanical Gardens in San Marino, CA.

## GALLERY EXHIBITIONS

BERMONDSEY, LONDON

Antony Gormley

*Body Politic*

22 November 2023 – 28 January 2024

MASON'S YARD, LONDON

Christine Ay Tjoe

*Lesser Numerator*

17 November 2023 – 13 January 2024

HONG KONG

Bram Bogart

*Signs*

24 November 2023 – 6 January 2024

NEW YORK

Tracey Emin

*Lovers Grave*

4 November 2023 – 13 January 2024

WEST PALM BEACH

Harland Miller

*All Night Meteorite*

30 November – 16 December 2023

PARIS

Sara Flores

13 December 2023 – 13 January 2024

SEOUL

*The Embodied Spirit*

Curated by Susan May

5 September – 21 December 2023



## GALLERY INFORMATION

### BERMONDSEY, LONDON

144 – 152 Bermondsey Street  
London SE1 3TQ  
+44 (0) 207 930 5373

Opening Times:  
Tuesday – Saturday, 10am – 6pm  
Sunday, 12 – 6pm

### MASON'S YARD, LONDON

25 – 26 Mason's Yard  
London SW1Y 6BU  
+44 (0) 207 766 3550

Opening Times:  
Tuesday – Saturday, 10am – 6pm

### PARIS

10 avenue Matignon  
75008 Paris  
*By appointment*

Opening Times:  
Tuesday – Saturday, 11am – 7pm

### NEW YORK

1002 Madison Avenue  
New York, NY 10075

Opening Times:  
Tuesday – Saturday, 10am – 6pm

### HONG KONG

50 Connaught Road Central  
Hong Kong  
+ 852 2592 2000

Opening Times:  
Tuesday – Saturday, 11am – 7pm

### SEOUL

6, Dosan-daero 45-gil  
Seoul  
+82 (0)2 6438 9093

Opening Times:  
Tuesday – Saturday, 10am – 6pm