

Art | Basel Hong Kong

March 26 – 30, 2025

Hong Kong Convention
and Exhibition Centre

Booth 3D08

TINA KIM GALLERY

Works by

Pacita Abad

Ha Chong-Hyun

Kang Seok Ho

Suki Seokyeong Kang

Kim Tschang-Yeul

Maia Ruth Lee

Mire Lee

Lee ShinJa

Minouk Lim

Park Seo-Bo

Jennifer Tee

Pacita Abad

My life and your life, 2002

Oil, sequins, buttons, mirrors, yarns, and
painted cloth stitched on canvas

61¾ x 22¼ x 2 inches

156.8 x 56.5 x 5.1 cm

(Framed)

\$100,000

TINA KIM GALLERY



Pacita Abad

Honey Bee, 2004

Acrylic, oil, and glass stitched on canvas
13½ x 10½ x 2 inches
34.3 x 25.9 x 5.1 cm
(Framed)

\$35,000



TINA KIM GALLERY

Pacita Abad

The Far Side of Apo Island, 1989

Acrylic, oil, and glass stitched on canvas
88¼ x 69 inches
224.2 x 175.3 cm

\$300,000



TINA KIM GALLERY

Pacita Abad

*Twenty-five meters down on
Layag-Layag Reef, 1986*

Oil, acrylic, buttons, and cotton yarn
on stitched and padded canvas
54¼ x 56¼ x 2 inches
137.8 x 142.9 x 5.1 cm
(Framed)

\$150,000



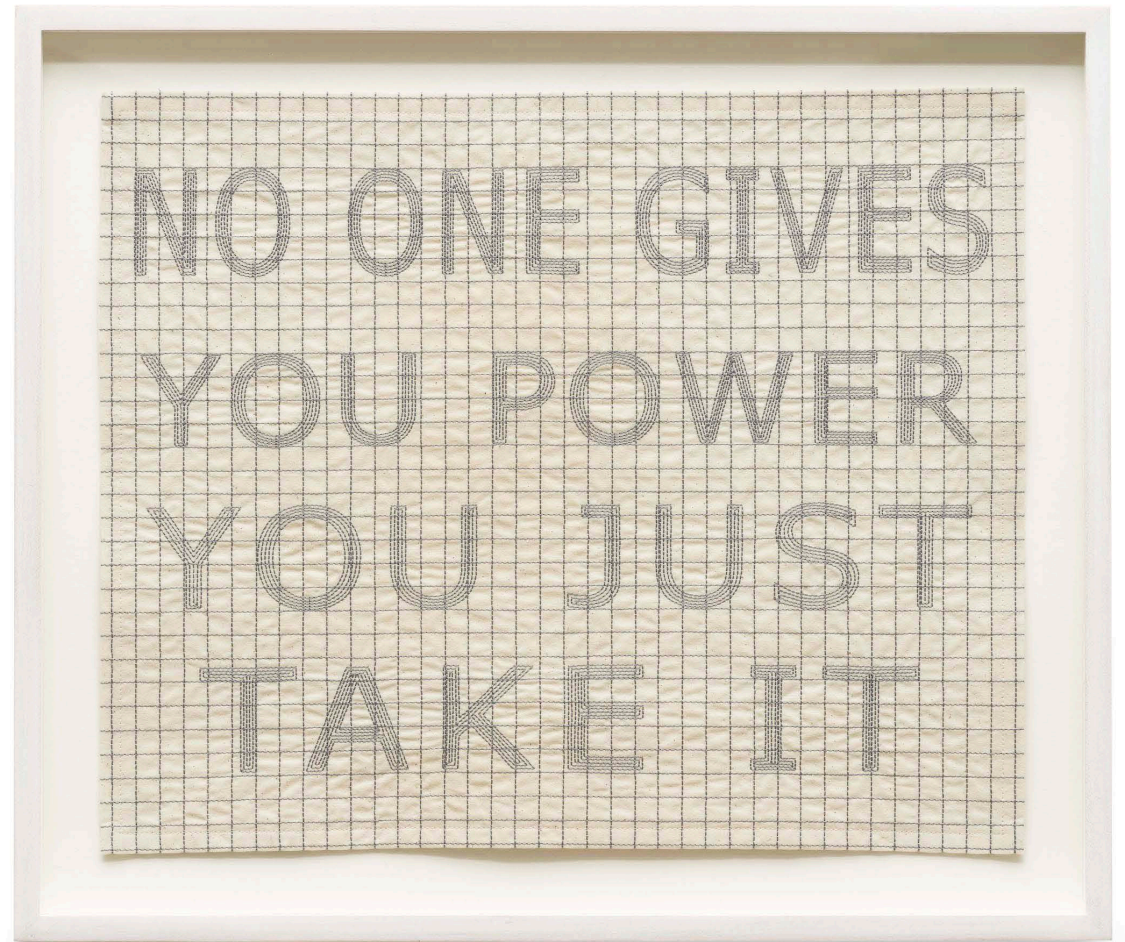
TINA KIM GALLERY

Ghada Amer

*WITCHES, No One Gives You Power
You Just Take It, 2023*

Embroidery on muslin
17³/₄ x 20⁵/₈ x 1¹/₂ inches
45.1 x 52.4 x 3.8 cm
(Framed)
Edition 8/8, 4AP

\$15,000



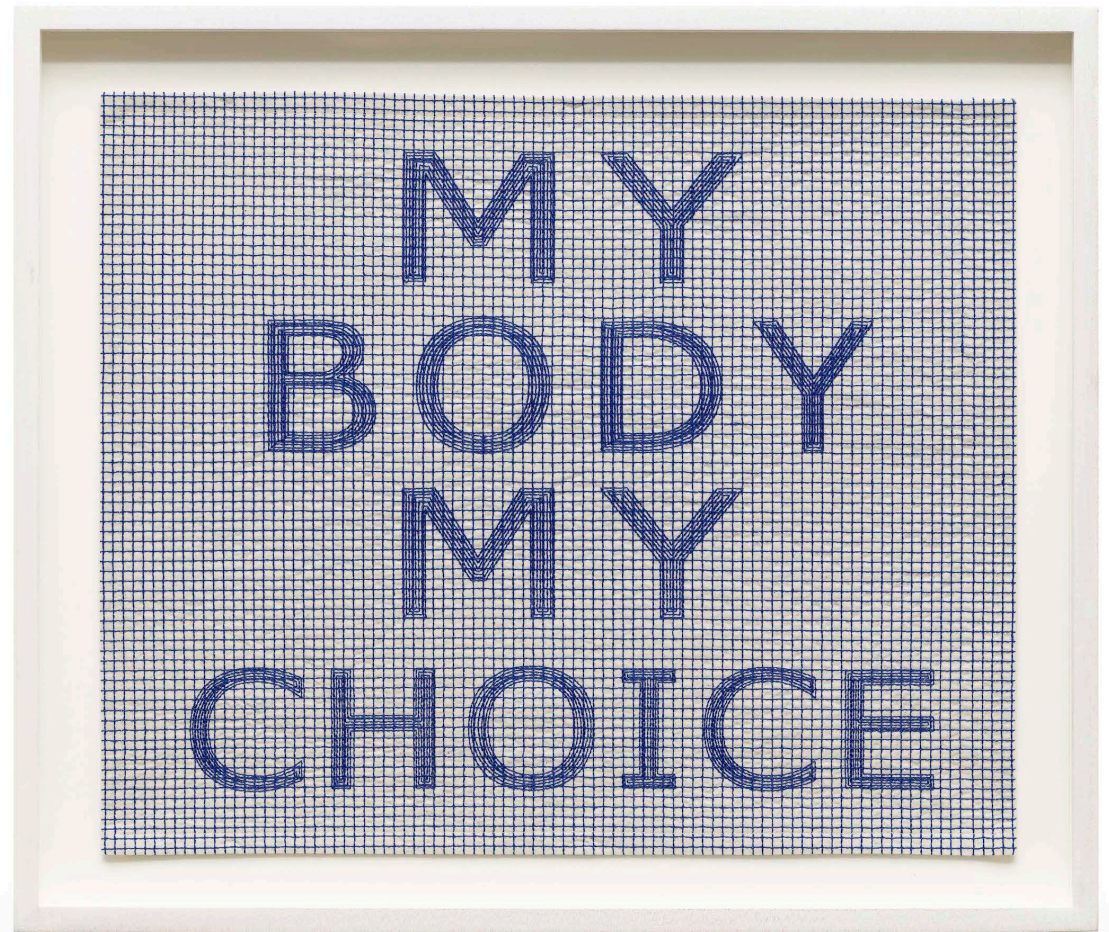
TINA KIM GALLERY

Ghada Amer

WITCHES, My Body My Choice, 2023

Embroidery on muslin
17³/₄ x 20⁵/₈ x 1¹/₂ inches
45.1 x 52.4 x 3.8 cm
(Framed)
Edition 6/8, 4AP

\$15,000



TINA KIM GALLERY

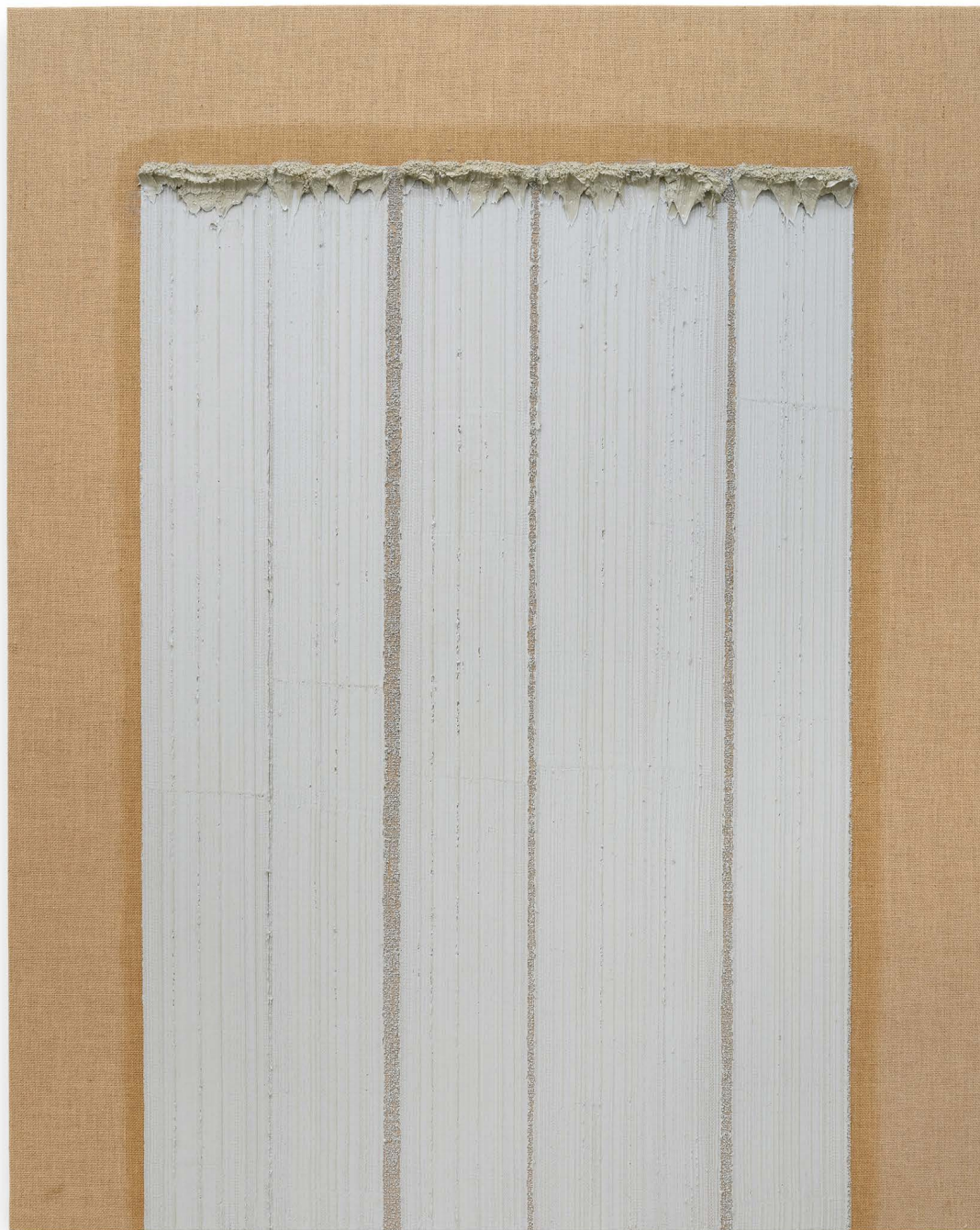
Ha Chong-Hyun

Conjunction 14-694, 2014

Oil on hemp cloth
89³/₈ x 71³/₄ inches
227 x 182 cm

\$500,000

TINA KIM GALLERY



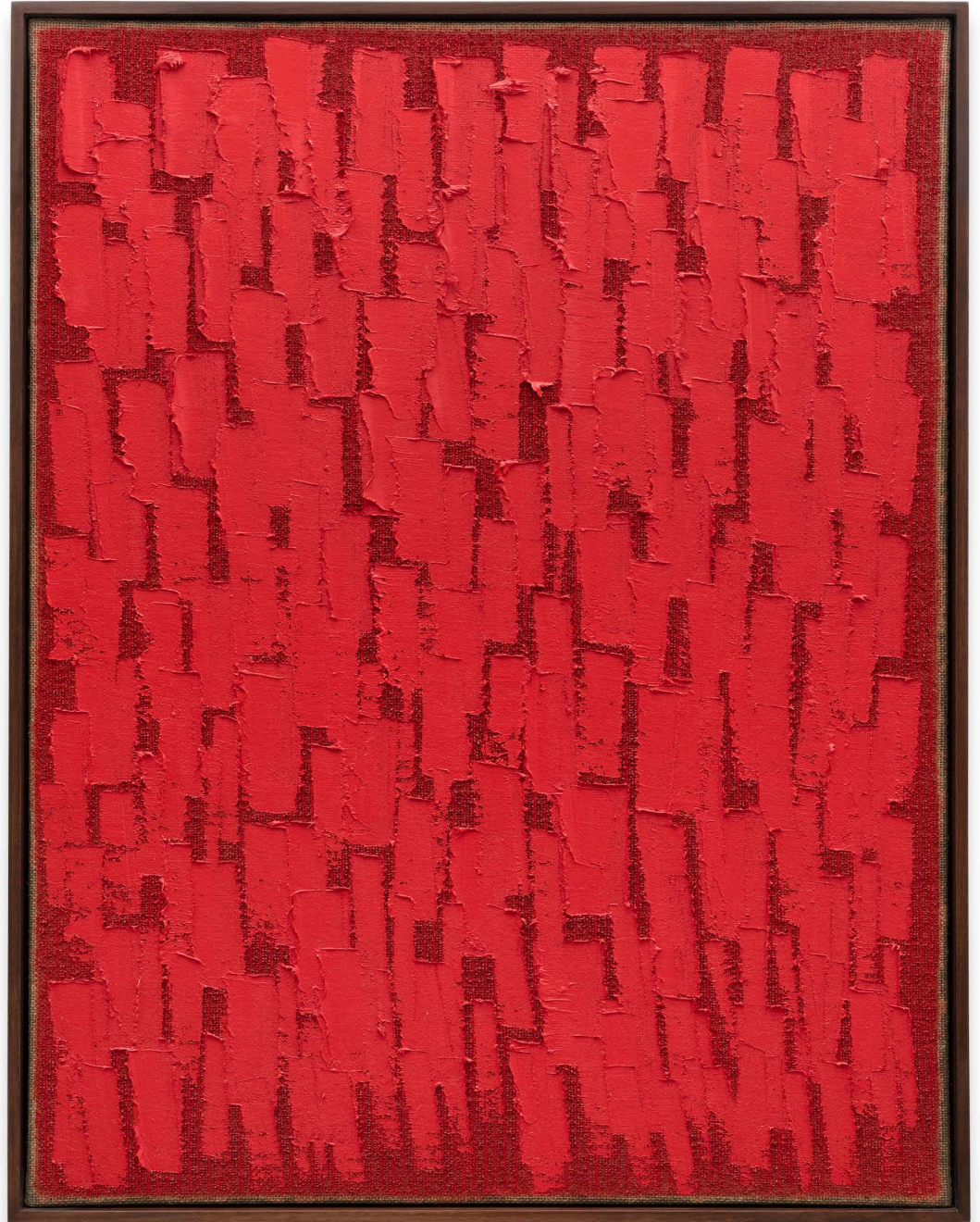
Ha Chong-Hyun

Conjunction 19-89, 2019

Oil on hemp cloth
47¼ x 37¼ inches
120 x 94.6 cm
(Framed)

\$230,000

TINA KIM GALLERY



Kang Seok Ho

Untitled, 1999

Oil on canvas
61 x 65 inches
155 x 165 cm

\$60,000



TINA KIM GALLERY

Kang Seok Ho

Untitled, 2012

Oil on canvas
21 $\frac{3}{8}$ x 20 $\frac{1}{8}$ inches
54 x 51 cm

\$25,000



TINA KIM GALLERY

Kang Seok Ho

Untitled, 2012

Oil on canvas
31½ x 24⅛ inches
80 x 61 cm

\$25,000



TINA KIM GALLERY

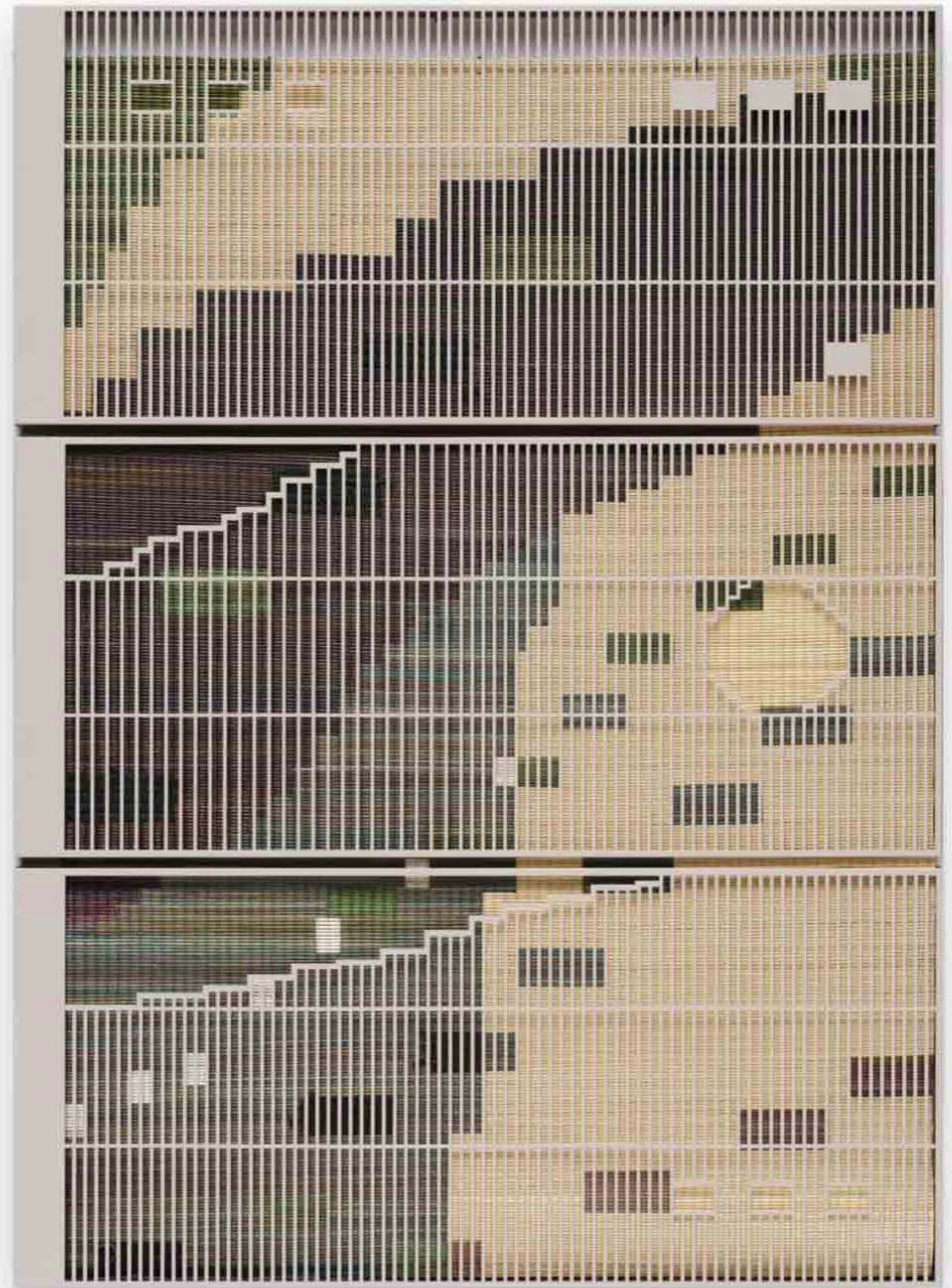
Suki Seokyeong Kang

Mat 120 × 165 #23-63, 2022-2023

Painted steel, woven dyed Hwamunseok,
nylon thread, thread, wood frame, brass
bolts, leather scraps
68½ x 49⅝ inches
174 x 126 cm

\$80,000

TINA KIM GALLERY



Suki Seokyeong Kang

Day 23-27, 2021-2023

Dyed wool, wood frame, thread
66 x 48 $\frac{7}{8}$ inches
167.2 x 124 cm

\$35,000



TINA KIM GALLERY

Suki Seokyeong Kang

Day #24-42, 2023-2024

Dyed wool, wood frame, thread
21 $\frac{5}{8}$ x 15 $\frac{3}{4}$ x 2 $\frac{1}{2}$ inches
55 x 40 x 6 cm

\$20,000



TINA KIM GALLERY

Kim Tschang-Yeul

Waterdrops, 1983

Acrylic and oil on canvas
79½ x 52¼ inches
201.9 x 132.7 cm

\$340,000

TINA KIM GALLERY



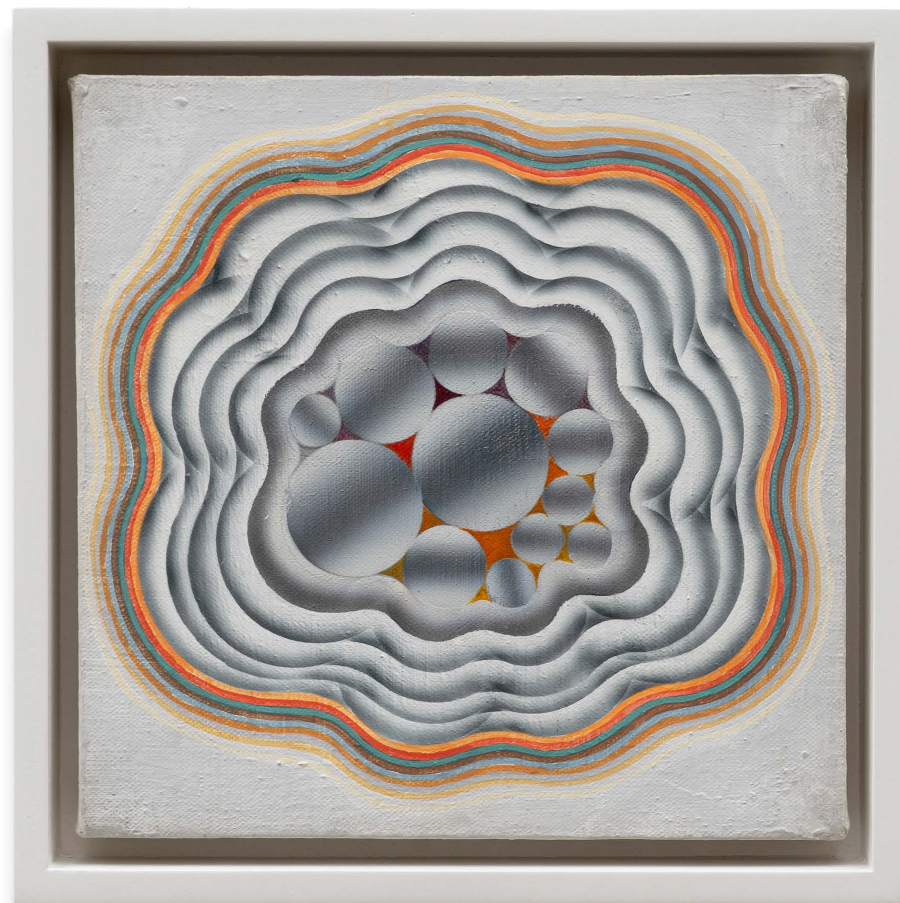


Kim Tschang-Yeul

Composition, 1969

Acrylic and cellulose lacquer on canvas
11¾ x 11¾ inches
29.8 x 29.8 cm
(Framed)

\$100,000



TINA KIM GALLERY

Kim Tschang-Yeul

Composition, 1969

Acrylic and cellulose lacquer on canvas
13½ x 13½ inches
34.3 x 34.3 cm
(Framed)

\$100,000



TINA KIM GALLERY

Kim Tschang-Yeul

Waterdrops, 2010

Oil and acrylic on canvas
15¼ x 21¾ inches
38.7 x 55.2 cm

\$50,000



TINA KIM GALLERY

Maia Ruth Lee

B.B.Lattice 1-3, 2025

Acrylic ink on canvas
61½ x 60 inches
156.2 x 152.4 cm
(Framed)

\$24,000



TINA KIM GALLERY

Maia Ruth Lee

B.B.M1-15, 2023

India ink on canvas
62 x 51 inches
157.5 x 129.5 cm
(Framed)

\$24,000



TINA KIM GALLERY

Mire Lee

*Black Sun: Surface with many holes,
section #18, 2023*

Fabric and clay slip
40 x 28¼ inches
101.6 x 71.8 cm
(Framed)

\$20,000



TINA KIM GALLERY

Mire Lee

*Black Sun: Surface with many holes,
section #21, 2023*

Fabric and clay slip
50 $\frac{1}{8}$ x 39 $\frac{7}{8}$ x 2 $\frac{1}{8}$ inches
127.3 x 101.3 cm
(Framed)

\$20,000



TINA KIM GALLERY

Lee ShinJa

Joining, 1981

Cotton, wool, and linen thread; weave
121¼ x 35 7/8 inches
308 x 91 cm

\$200,000

TINA KIM GALLERY

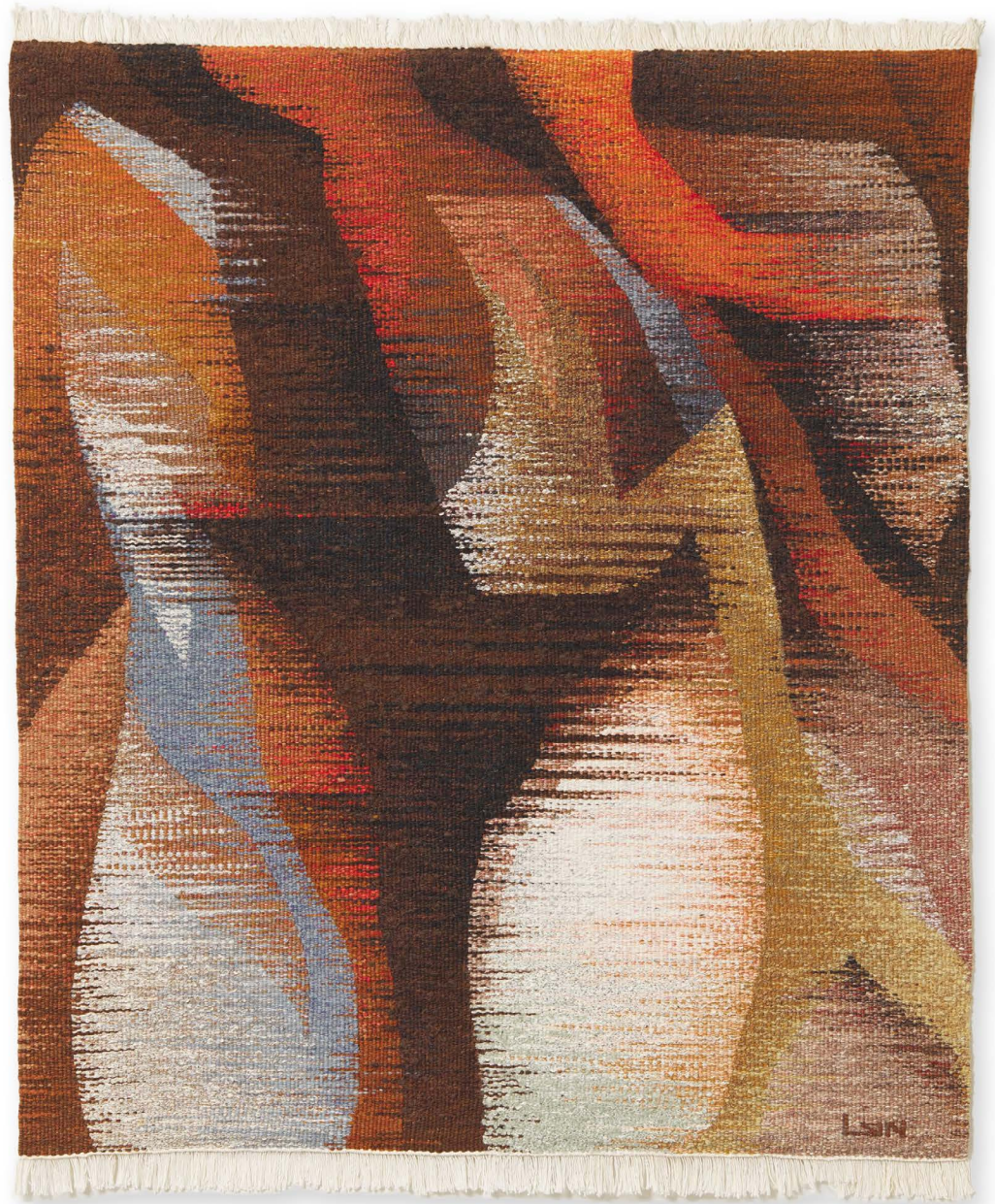


Lee ShinJa

Growth, c. 1980s

Wool thread; tapestry
53 x 44 inches
134.6 x 111.8 cm

\$120,000



TINA KIM GALLERY

Lee ShinJa

The World is Beautiful, c. 1980s

Wool thread; tapestry
45 $\frac{5}{8}$ x 30 $\frac{1}{4}$ inches
116 x 77 cm

\$100,000



TINA KIM GALLERY

Lee ShinJa

Spirit of Mountain, 1996

Wool, synthetic thread; tapestry
30 x 40¼ inches
76.2 x 102.2 cm

\$70,000



TINA KIM GALLERY

Minouk Lim

Enwinded Score, 2022

Wood cane, cuttlebone, metal plate
70 $\frac{7}{8}$ x 13 $\frac{1}{2}$ x 8 inches
180 x 34.3 x 20.3 cm

\$45,000

TINA KIM GALLERY



Minouk Lim

Curahee - Stand Alone NO.28, 2023

Acrylic, spray, pawstel on military blanket
99⁵/₈ x 62 inches
253 x 157.5 cm
(Framed)

\$50,000



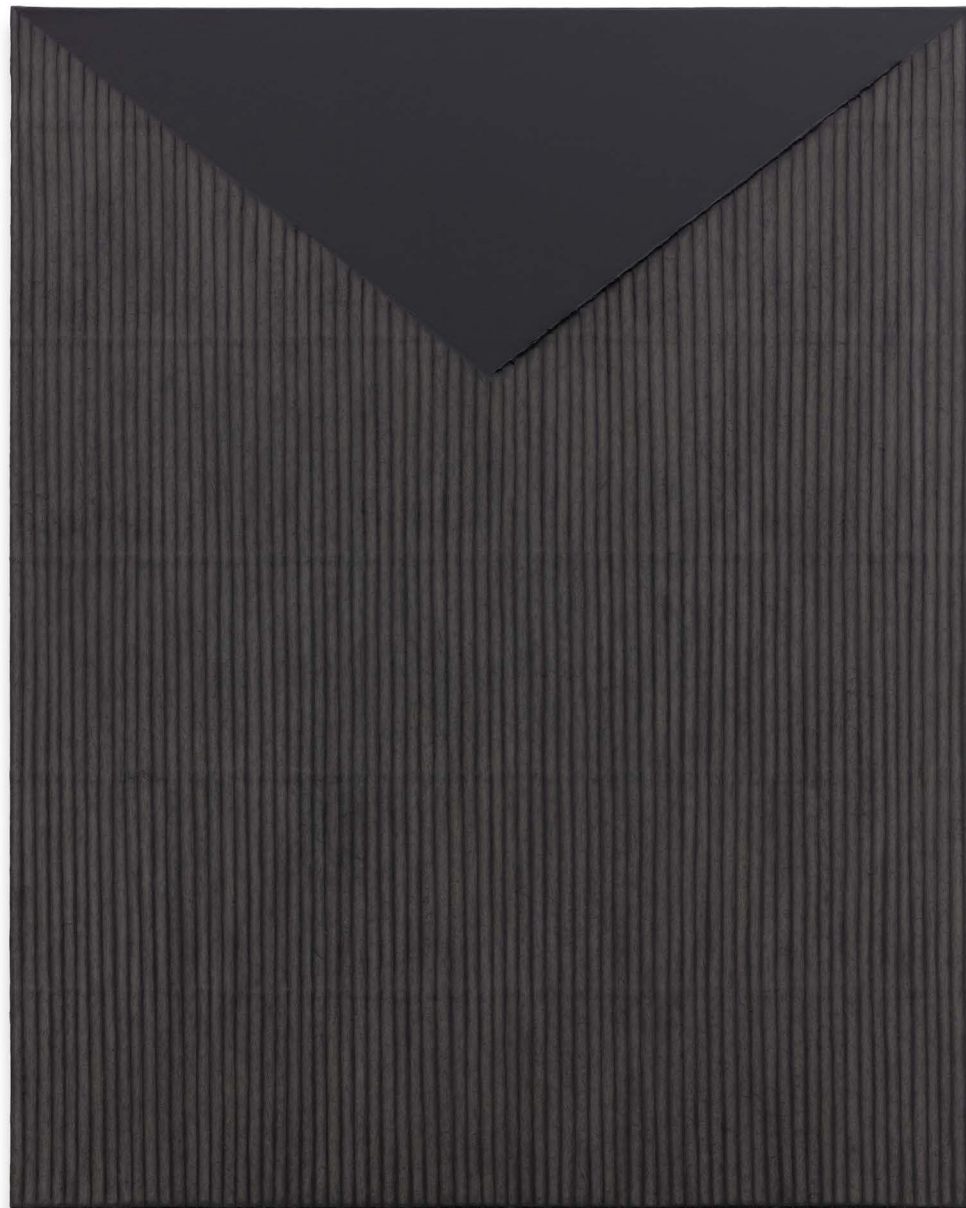
TINA KIM GALLERY

Park Seo-Bo

Ecriture No. 010810, 2001

Mixed Media with Korean Hanji
63¾ x 51⅛ inches
162 x 130 cm

\$580,000



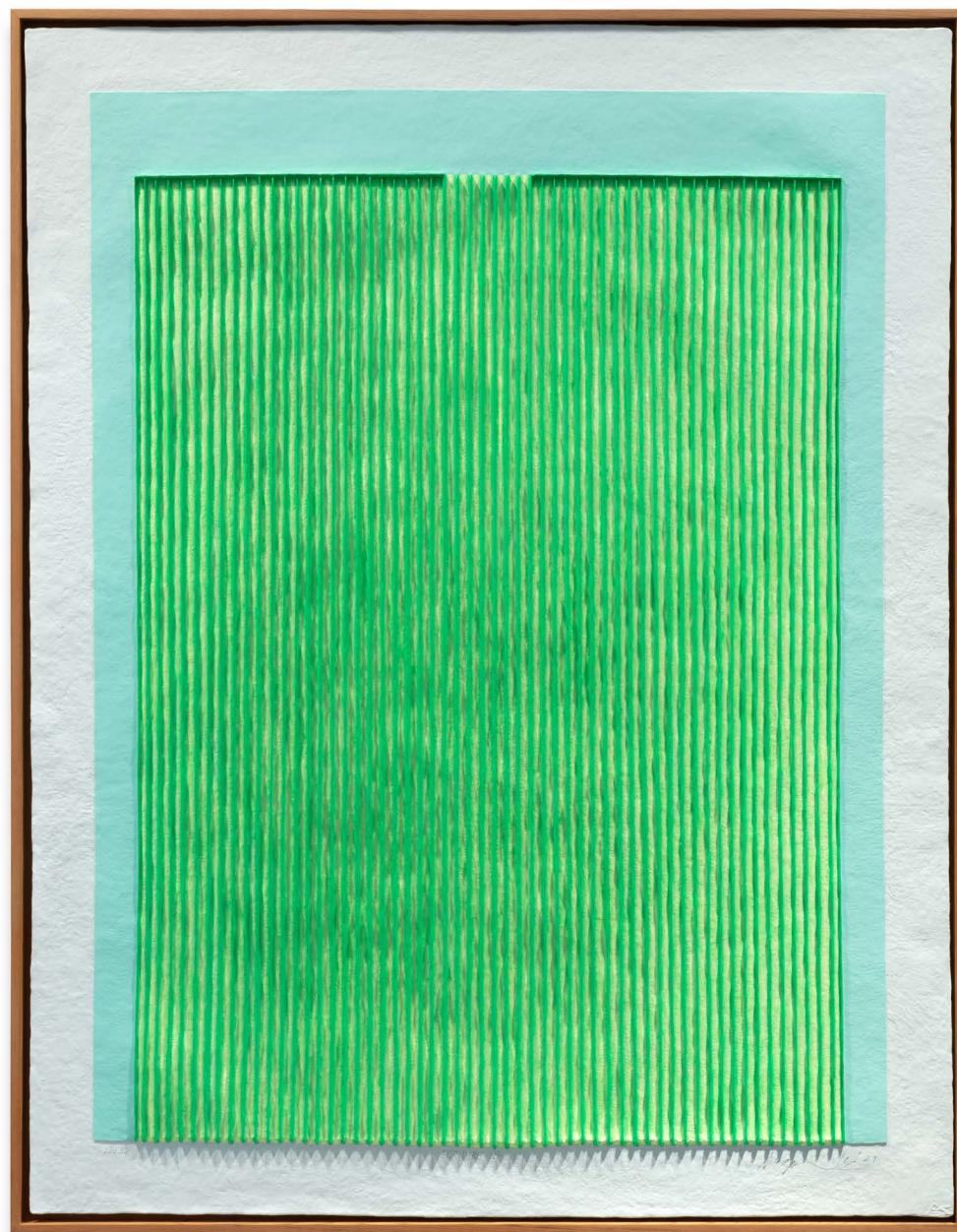
TINA KIM GALLERY

Park Seo-Bo

Ecriture No. 16-21, 2021

Relief Print with Korean Hanji
53¾ x 42 inches
136.5 x 106.7 cm
(Framed)

\$90,000



TINA KIM GALLERY

Jennifer Tee

Tampan Tree of Life, Dancing Birds, 2024

Tulip petal collage
61¾ x 54⅛ inches
156.8 x 137.5 cm
(Framed)

\$25,000



TINA KIM GALLERY

Jennifer Tee

Tampan Tree of Life, Dancing Birds, 2024

Tulip petal collage
61¾ x 54⅛ inches
156.8 x 137.5 cm
(Framed)

\$8,000



TINA KIM GALLERY

SALES INQUIRIES

For English language inquiries, please contact
Ingrid Song, Director at ingrid@tinakimgallery.com

한국어 문의는 **이단지 (Danji Lee), Senior Director** 에게
연락해 주시길 바랍니다. 이메일: danji@tinakimgallery.com

© Tina Kim Gallery 2025

TINA KIM GALLERY

525 West 21st Street, New York, NY 10011

