



Frieze New York

Booth B7

May 7 – 11, 2025

Mendes Wood DM







Mendes Wood DM is pleased to return to Frieze New York 2025 with a panoramic presentation of the gallery's program, centered around **Kishio Suga's** (b. 1944, Morioka, Japan) *Sliced Stones* (2018), an installation of eight granite stones in concentric display. A leading figure from the postwar Japanese artist group *Mono-ha*, Suga has long contemplated the relationships between object and site, material and place, in both his artworks and writings. The staging of *Sliced Stones* at Frieze New York is a prelude to his solo exhibition at Dia Beacon, opening in July.

Concurrent with her solo exhibition at Storm King Art Center, the presentation includes a new work on canvas by **Sonia Gomes** (b. 1948, Caetanópolis, Brazil), alongside a sculpture in fiber and bronze, that exemplify

her practice's observance of resilience, memory, and the passing of time.

Gomes, a pathbreaking figure in Brazilian contemporary art, intervenes within history through material and personal remembrance in her lyrical work.

In dialogue, the booth presents a selection of exceptional paintings by **Amadeo Luciano Lorenzato** (1900-1995, Belo Horizonte, Brazil), the celebrated Brazilian painter, as well as new highlights by gallery artists **Eunnam Hong** (b. 1979, Gangwon-do, South Korea), **Vojtěch Kovařík** (b. 1993, Valašské Meziříčí, Czech Republic), **Antonio Obá** (b. 1983, Ceilândia, Brazil), **Paulo Nimer Pjota** (b. 1988, São José do Rio Preto, Brazil), and **Leah Ke Yi Zheng** (b. 1988, Wuyishan, China).

Paloma Bosque
b. 1982, Garça, Brazil

Amadeo Luciano Lorenzato
1900 - 1995, Belo Horizonte, Brazil

Peter Shear
b. 1980, Beverly Farms, USA

Castiel Vitorino Brasileiro
b. 1996, Vitória, Brazil

Mimi Lauter
b. 1982, San Francisco, USA

Marcos Siqueira
b. 1988, São José do Rio Preto, Brazil

Sonia Gomes
b. 1948, Caetanópolis, Brazil

Matthew Lutz-Kinoy
b. 1984, New York, USA

Paula Siebra
b. 1983, Ceilândia, Brazil

Eunnam Hong
b. 1979, Gangwon-do, South Korea

Paulo Monteiro
b. 1961, São Paulo, Brazil

Kishio Suga
b. 1944, Morioka, Japan

Vojtěch Kovařík
b. 1993, Valašské Meziříčí, Czech Republic

Antonio Obá
b. 1983, Ceilândia, Brazil

Rubem Valentim
1922 - 1991, Salvador, Brazil

Patricia Leite
b. 1955, Belo Horizonte, Brazil

Paulo Nimer Pjota
b. 1988, São José do Rio Preto, Brazil

Leah Ke Yi Zheng
b. 1988, Wuyishan, China

Mendes Wood

Prices: <https://privateviews.artlogic.net/2/29cbdc5550bc3dcfaa9685/>



Amadeo Luciano Lorenzato, *Untitled*, 1981, oil on hardboard, 27 x 68 cm | 10 5/8 x 26 3/4 in, MW.ALL.230







Amadeo Luciano Lorenzato

Untitled, 1993

oil on canvas on hardboard

35 x 30 cm

13 3/4 x 11 3/4 in

MW.ALL.160







Amadeo Luciano Lorenzato

Untitled, 1977

oil on hardboard

44 x 38.8 cm

17 3/8 x 15 1/4 in

MW.ALL.162







Amadeo Luciano Lorenzato, *Untitled*, 1962, oil on canvas, 38.7 x 45.9 cm | 15 1/4 x 18 1/8 in, MW.ALL.158







Amadeo Luciano Lorenzato, *Untitled*, oil on hardboard, 35 x 46.5 cm | 13 3/4 x 18 1/4 in, MW.ALL.214







Kishio Suga, *Sliced Stones*, 2018, eight stones, approx 19 x 19 x 26 inches each (ground stone), approx 2.5 x 24 x 16.5 inches each (sliced stone), MW.KIS.044









Kishio Suga

Scenic Causes in Formation, 2019

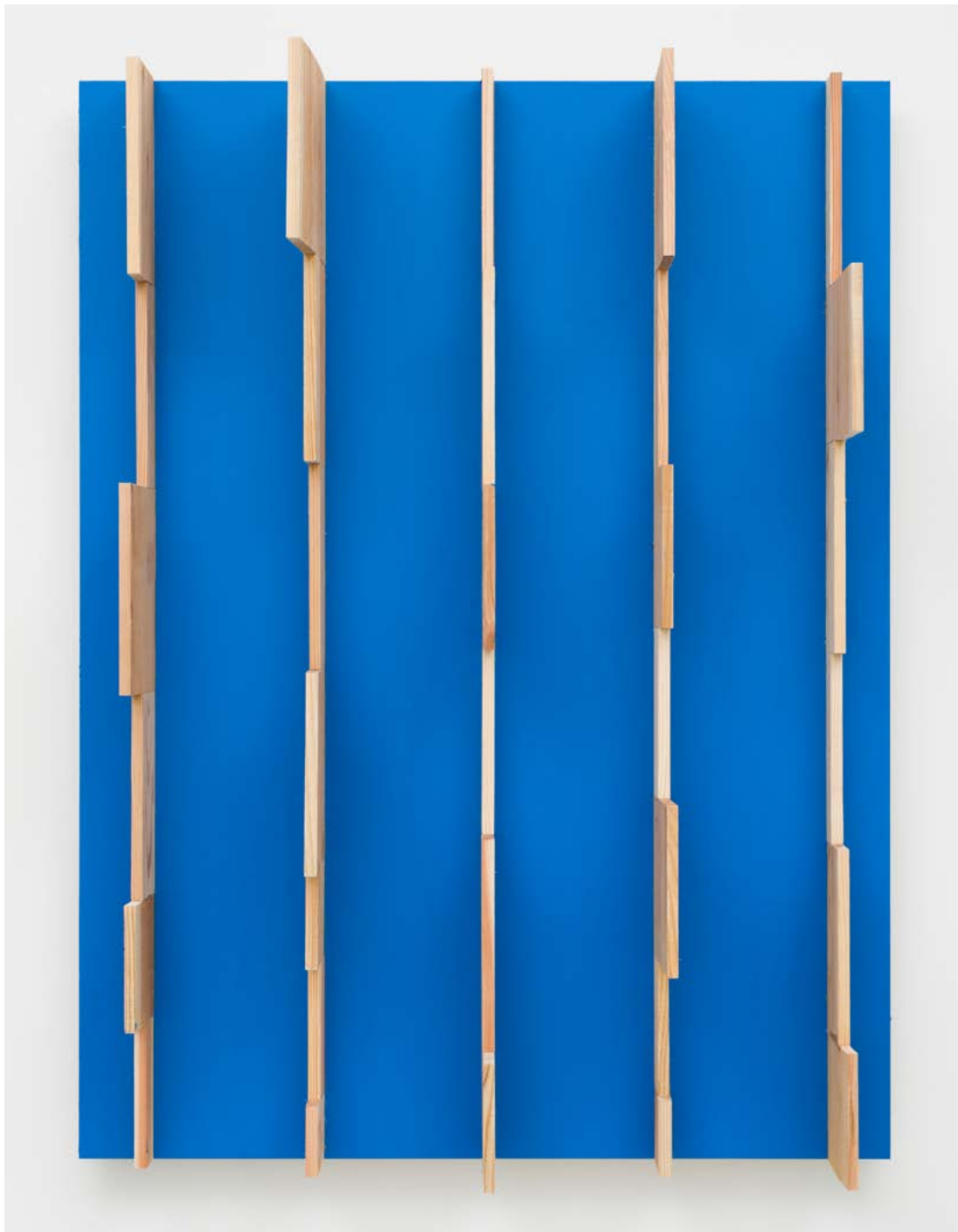
Wood, paint, branches

71 x 53 1/8 x 4 7/8 inches

180.5 x 135 x 31.2 centimeters

MW.KIS.069





Kishio Suga

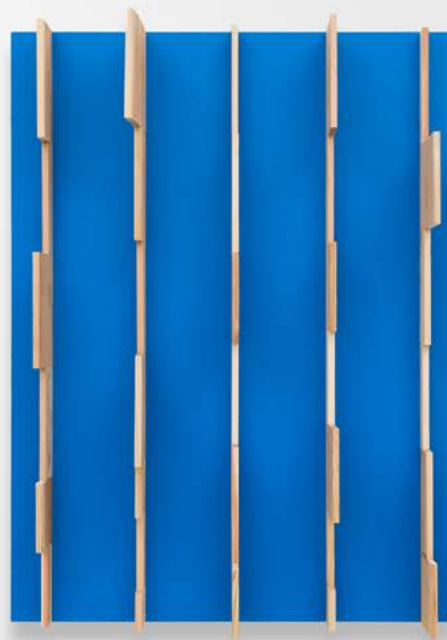
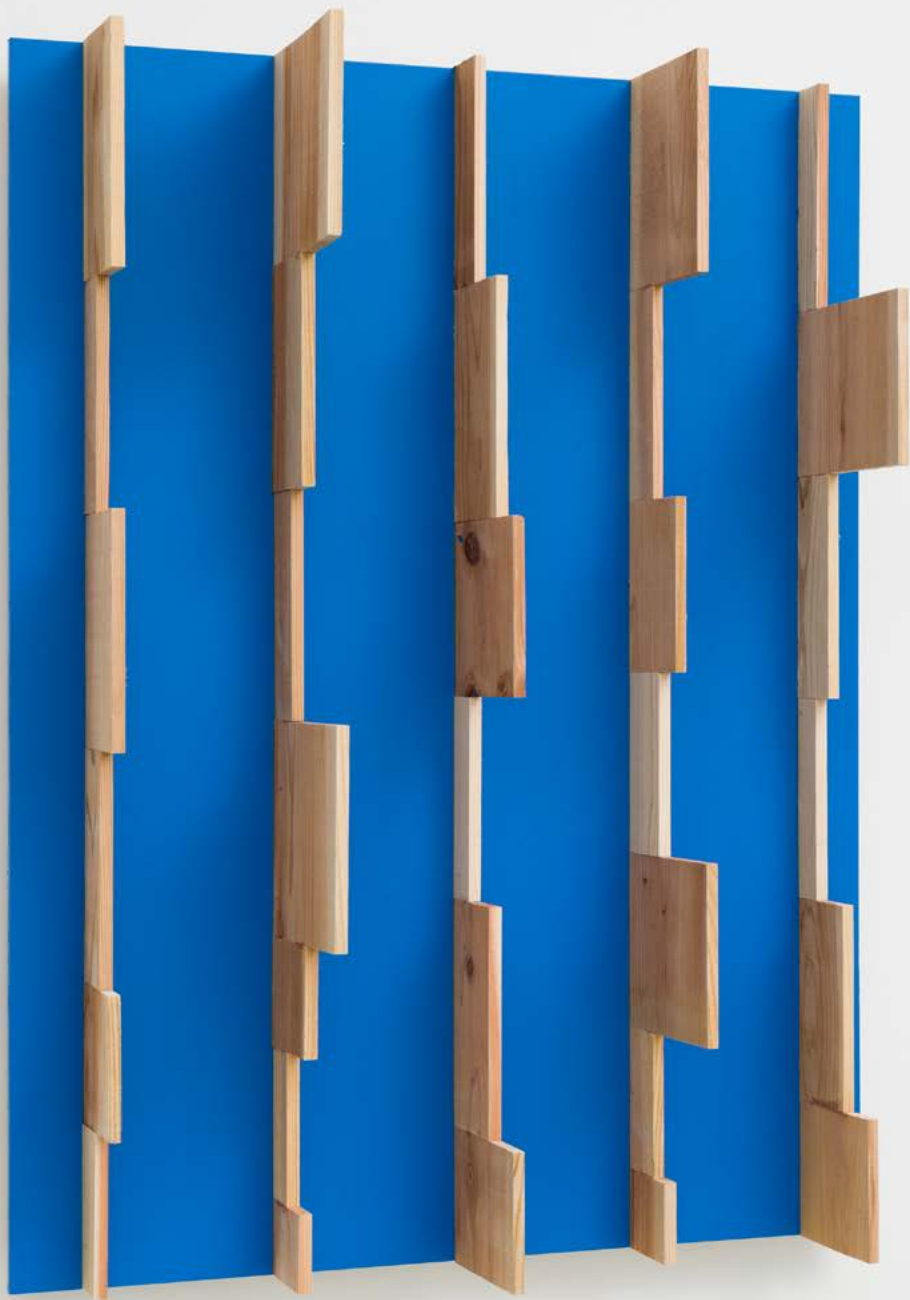
Intervals of Existence Arising, 2020

acrylic and varnish on wood

120 x 90 x 28 cm

47 1/4 x 35 3/8 x 11 in

MW.KIS.132





Kishio Suga

Affixed Edges, 2010

wood, paint, metal clips

18 1/8 x 16 1/4 x 2 1/4 in

46 x 41.3 x 5.7 cm

MW.KIS.062





Kishio Suga

Spatial Elements, Hollow Body, 1989

wood, plywood, water-based paint

67.5 x 51 x 10.5 cm

26 5/8 x 20 1/8 x 4 1/8 in

MW.KIS.109





Kishio Suga

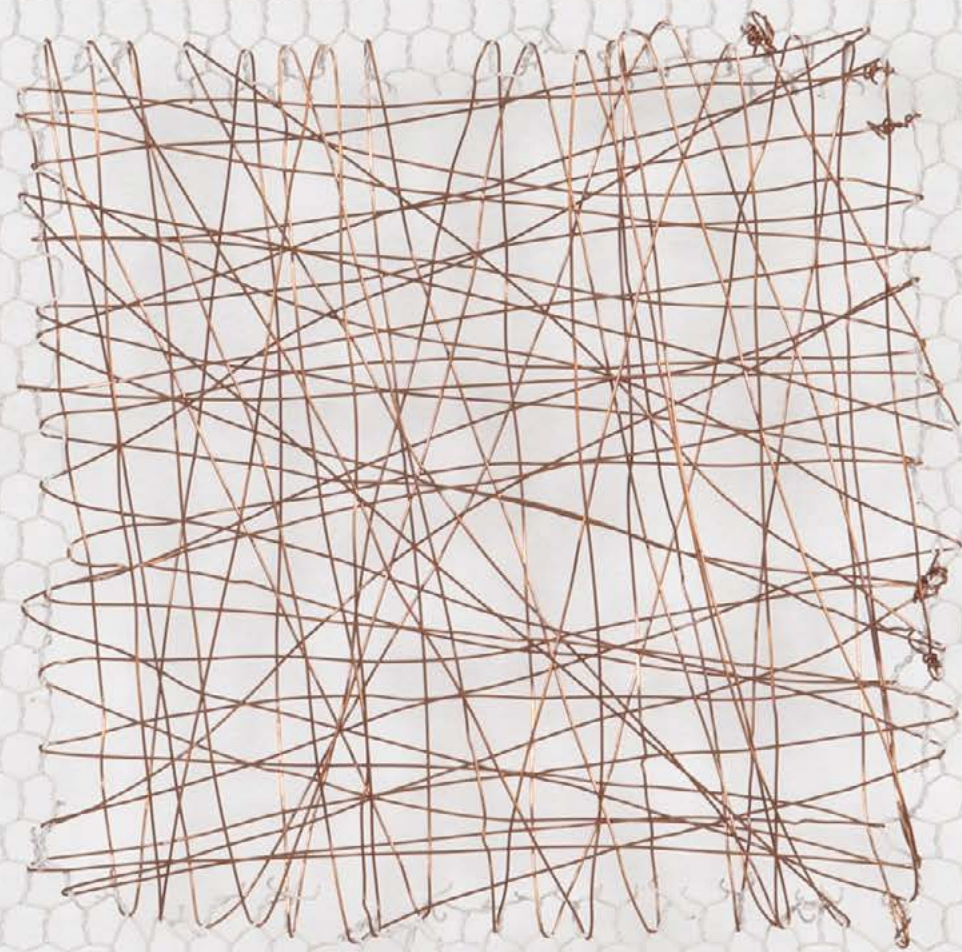
Gathered Elements in Union, 2007

wood, mesh, wire

34 3/4 x 29 1/8 x 2 1/8 in

88.3 x 73.7 x 5.1 cm

MW.KIS.094







Antonio Obá

Uma alegoria / morte-vida: coragem [An Allegory / Life-Death: Courage], 2024

oil on canvas

200 x 160 cm

78 3/4 x 63 in

MW.ANO.377







Sonia Gomes

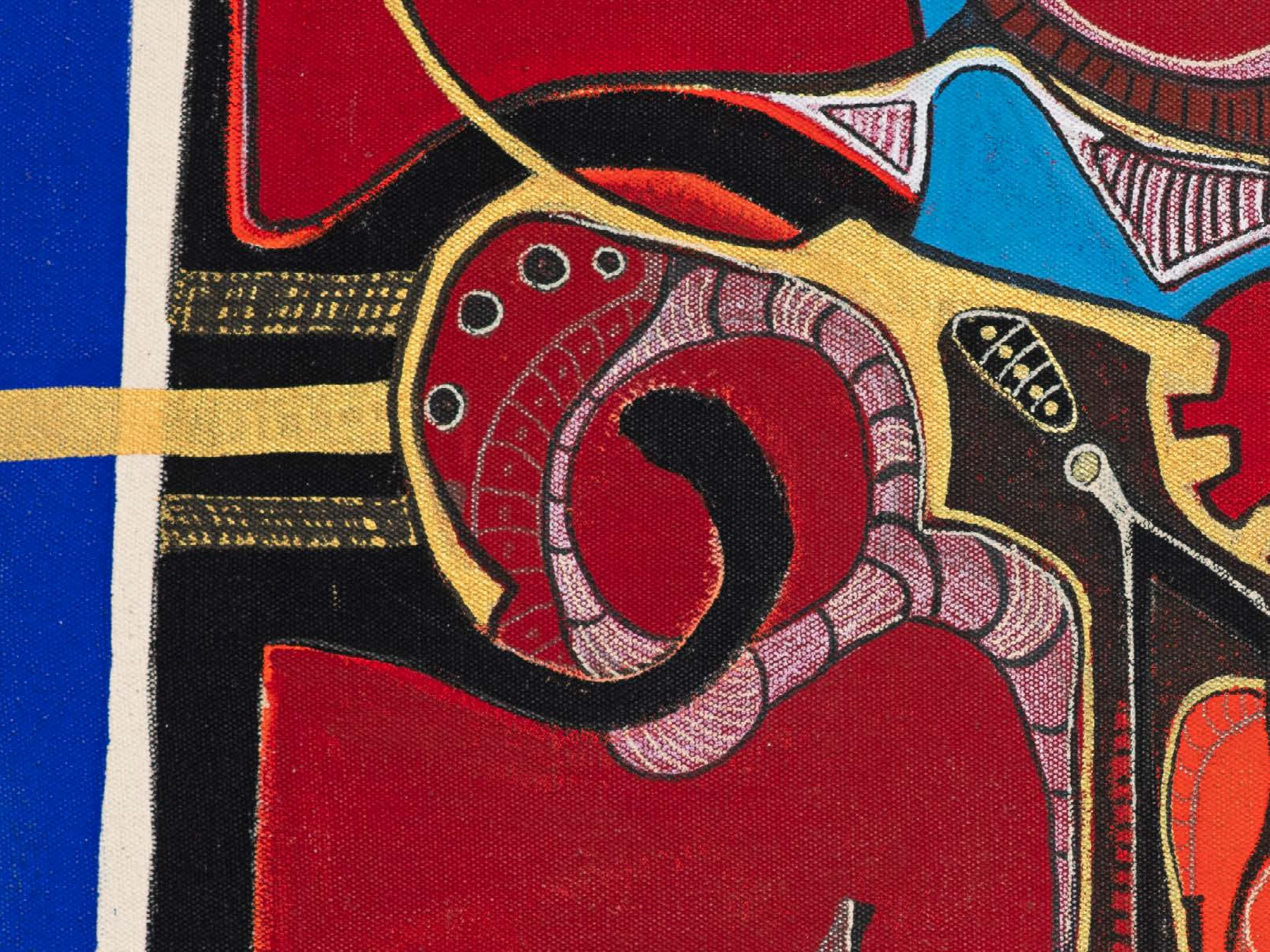
Untitled, 2025

drawing on canvas

52 x 52 x 3 cm

20 1/2 x 20 1/2 x 1 1/8 in

MW.SGM.598





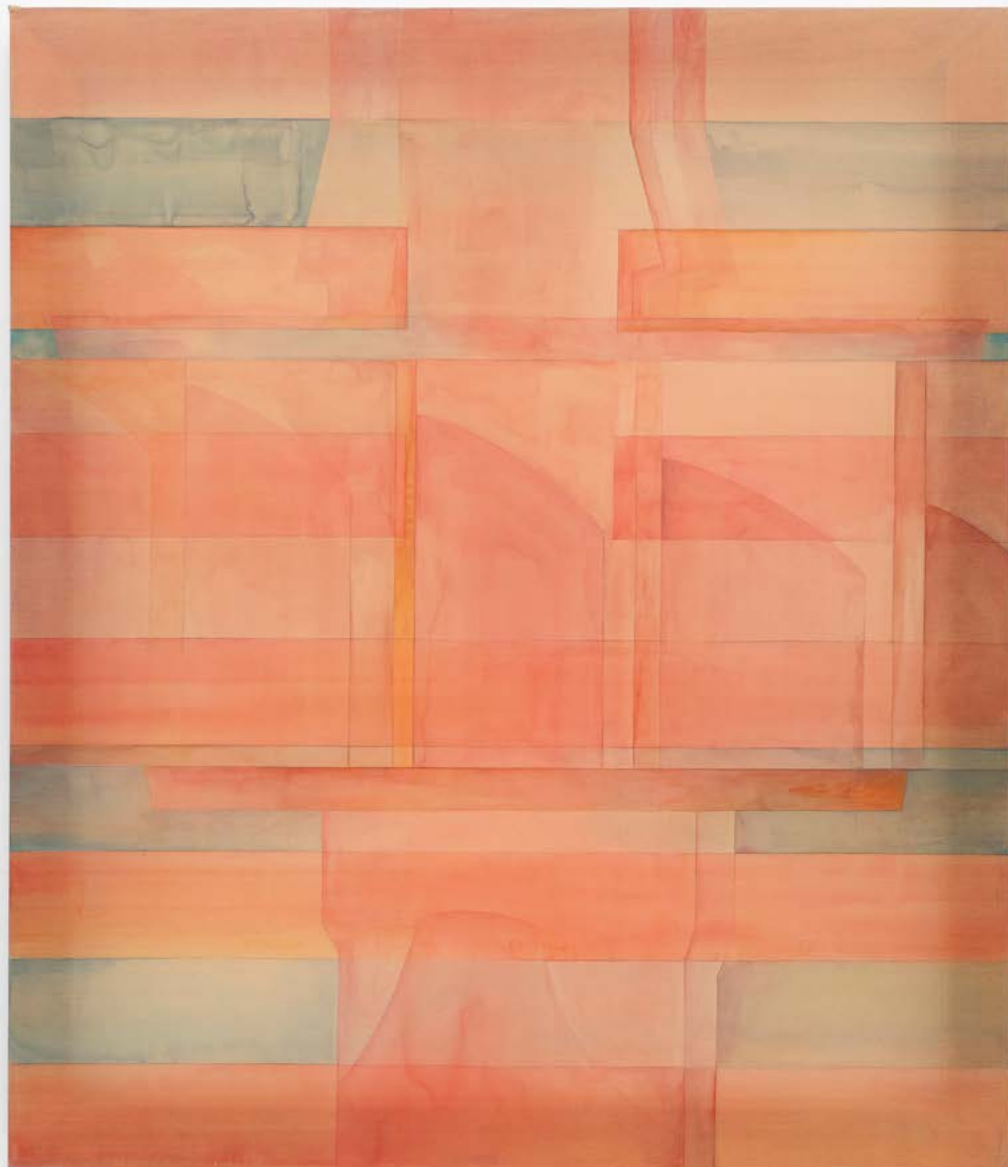


Eunnam Hong, *Patient*, 2025, oil on linen, 121.9 x 88.9 cm | 48 x 35 in, MW.EHO.015









Leah Ke Yi Zheng

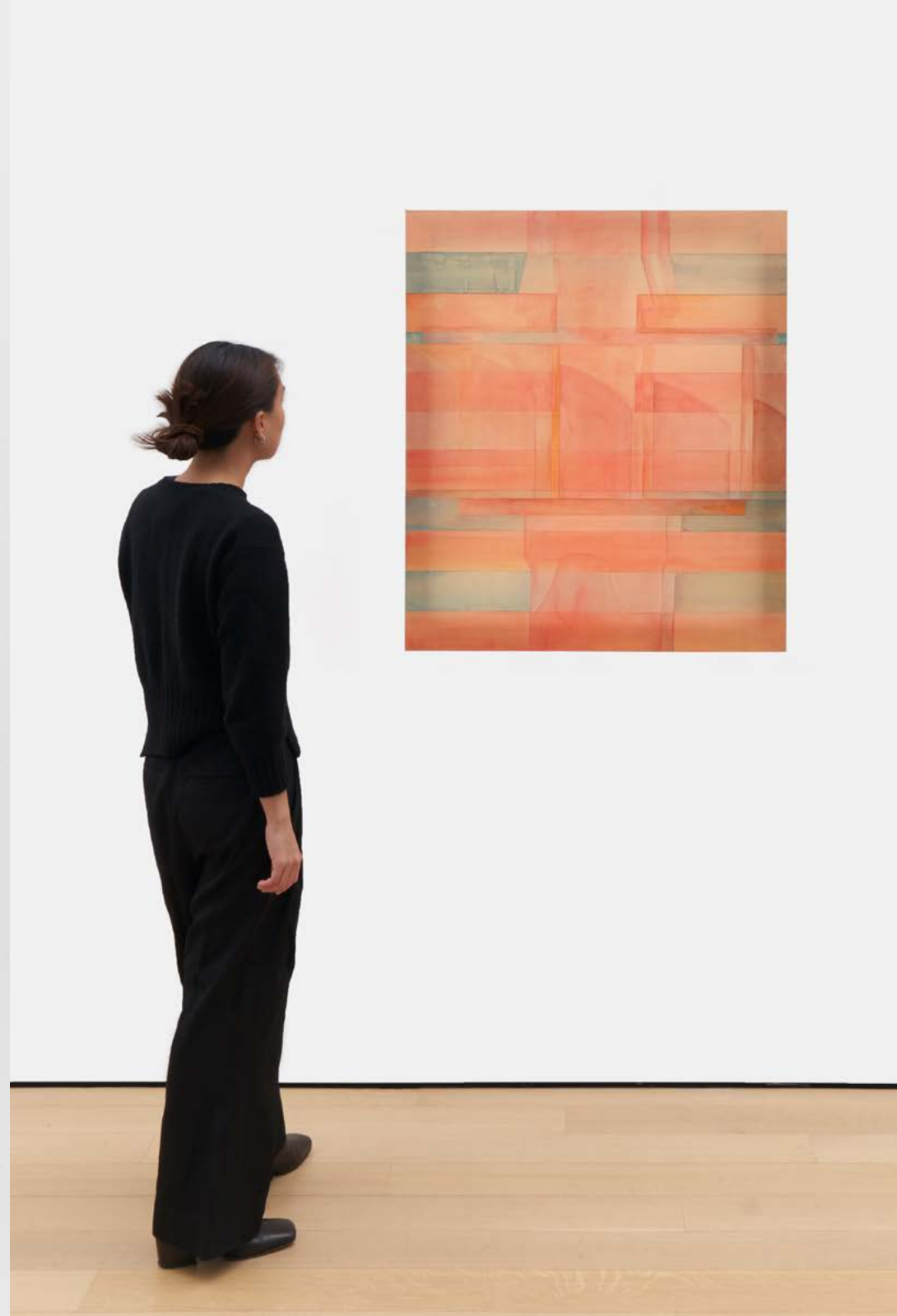
Placeholder for FRNY25, 2025

acrylic on silk

76.2 x 88.9 cm

30 x 35 in

MW.LKY.043





Leah Ke Yi Zheng

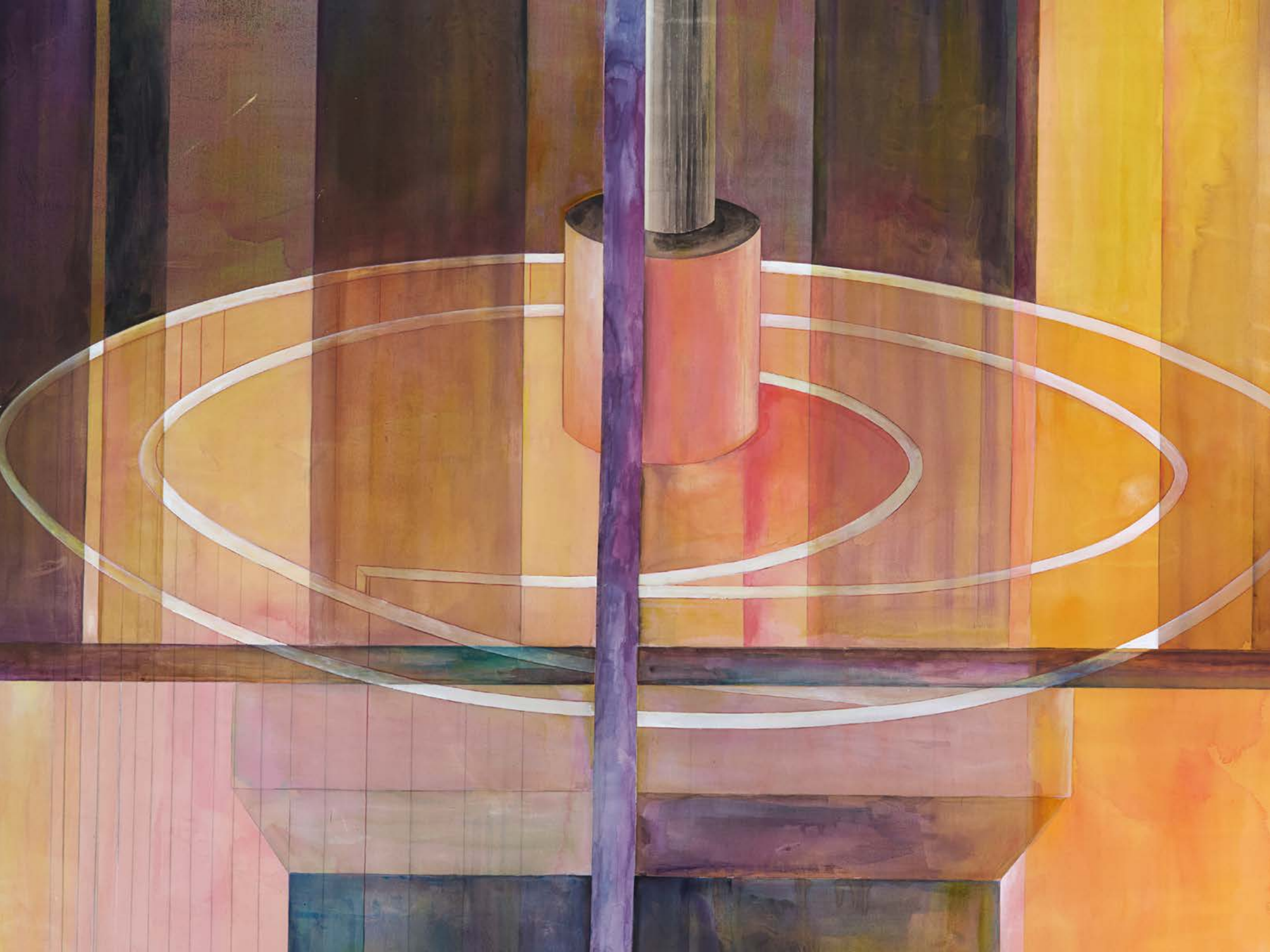
Machines, 2024

acrylic on silk over pinewood stretcher

210.8 x 162.6 cm

83 x 64 in

MW.LKY.029







Leah Ke Yi Zheng

no.63 <-> no.37 <-> no.13 <-> no.49 <->

no.43 <-> no.1 <-> no.9 <->

no.5 <-> no.34, 2024

acrylic on silk over mahogany stretcher

94 x 94 cm

37 x 37 in

MW.LKY.023





Paula Siebra, *Dunes* | *Dunes*, 2024, oil on canvas, 40 x 50 cm | 15 3/4 x 19 3/4 in, MW.PSL210



Paulo Nimer Pjota

Salamandra de 3 rabos, 2025

tempera, oil and acrylic on canvas

209 x 161.5 cm

82 1/4 x 63 5/8 in

MW.PNP.429







Rubem Valentim, *Emblema*, 1979, acrylic on canvas, 50 x 70 cm | 19 3/4 x 27 1/2 in, MW.RVA.173







Paloma Bosqu 

Plate, 2024

cotton fiber pigmented with pva glue, stone plaster, resin and acrylic paint

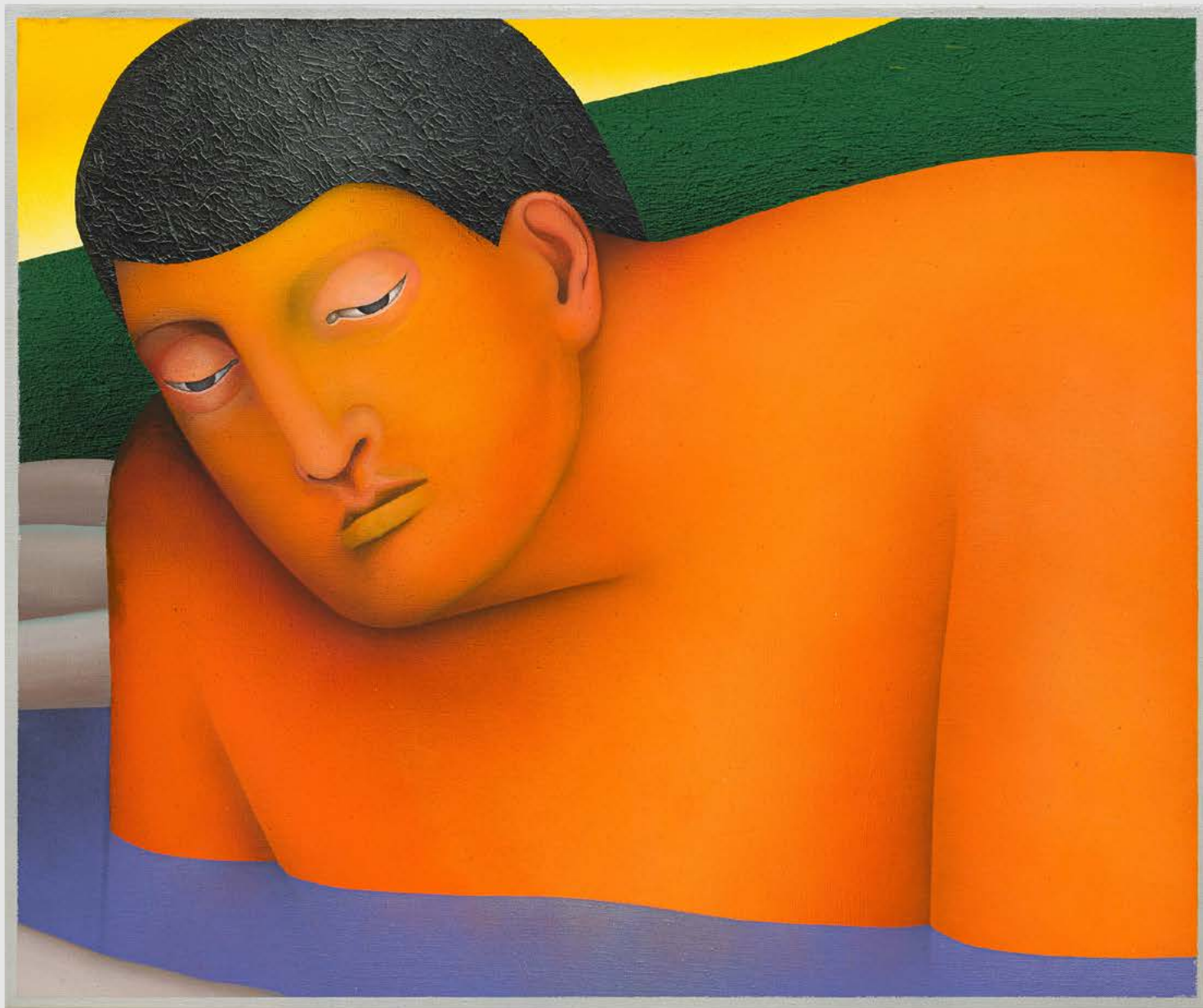
120 x 75 x 10 cm

47 1/4 x 29 1/2 x 4 in

MW.PBS.349







Vojtěch Kovařík, *The Rocks Shed Tears that Flooded the Rivers*, 2024, acrylic and sand on canvas, 120 x 100 x 8 cm | 47 1/4 x 39 3/8 x 3 1/8 in, MW.VKO.094





Paulo Monteiro

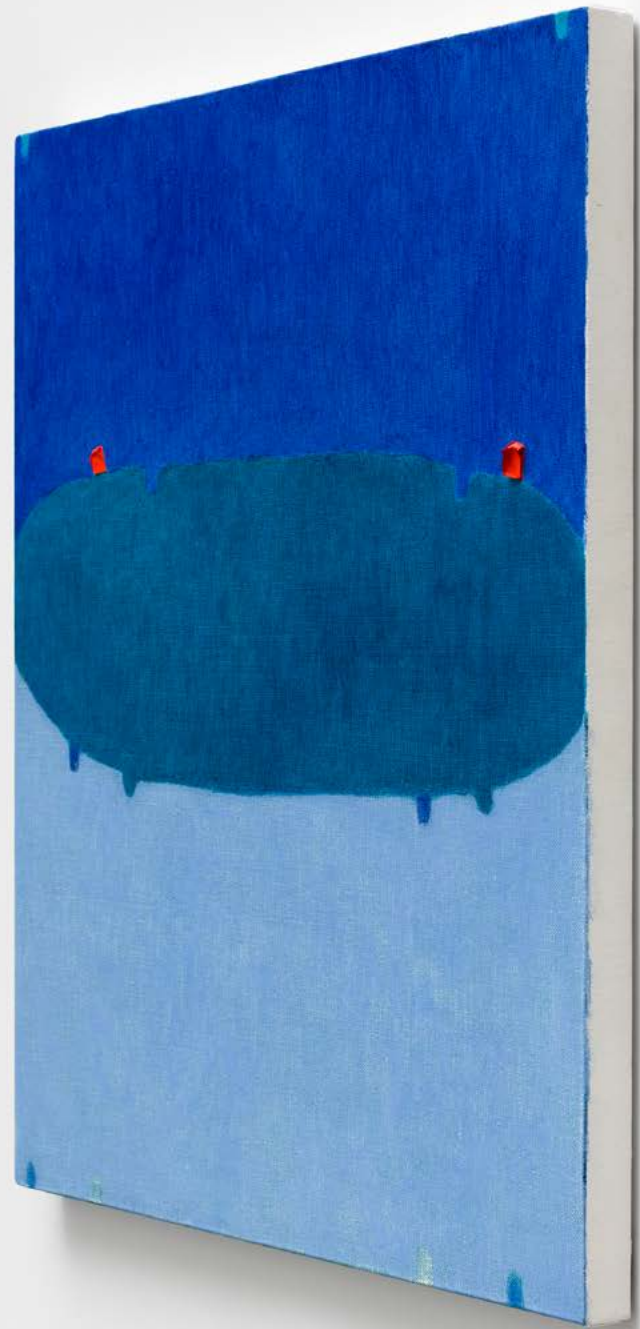
Untitled, 2024

oil on linen

55 x 45 cm

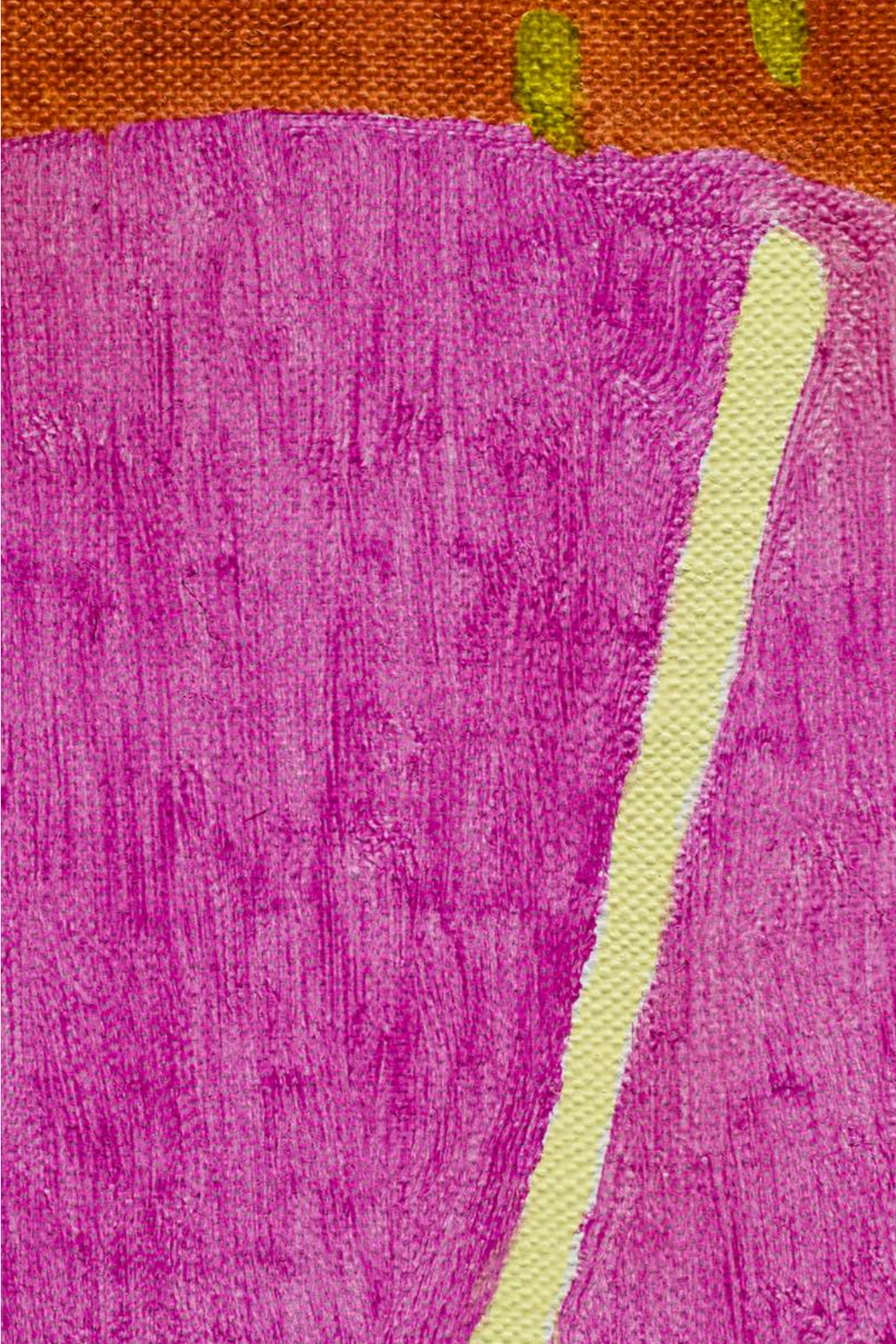
21 5/8 x 17 3/4 in

MW.PMT.1969





Paulo Monteiro, *Untitled*, 2024, oil on linen, 22 x 15 cm | 8 5/8 x 5 7/8 in, MW.PMT.1978



Paulo Monteiro, *Untitled* , 2024, oil on linen, 25 x 20 cm | 9 7/8 x 7 7/8 in, MW.PMT.2012



Mimi Lauter

Hesed Sefira, 2024

oil pastel and soft pastel on paper
framed:

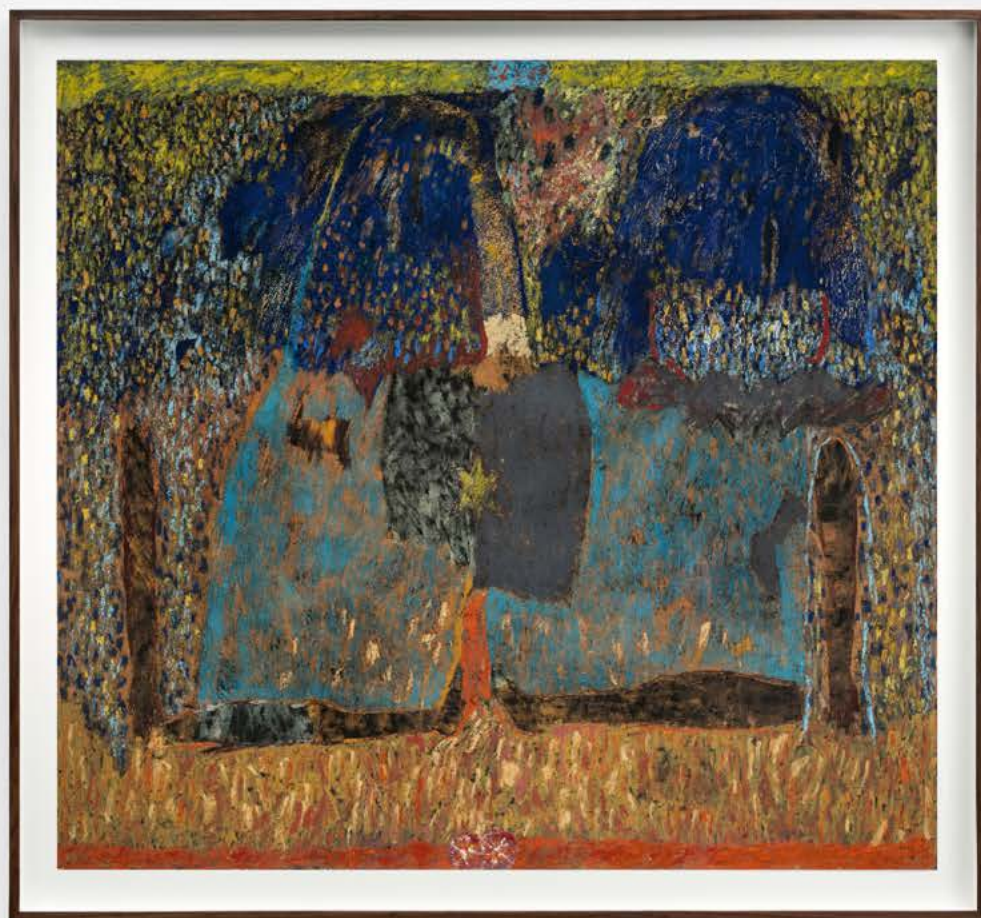
160 x 173 cm

63 x 68 1/8 in

MW.MLA.112









Marcos Siqueira

Untitled, 2024

pigment on panel

25 x 25 cm

9 7/8 x 9 7/8 in

MW.MSL086





Marcos Siqueira

Untitled, 2024

pigment on panel

40 x 40 cm

15 3/4 x 15 3/4 in

MW.MSL084





Matthew Lutz-Kinoy

Plastic Foil, 2024

acrylic and charcoal on canvas

215 x 173 cm

84 5/8 x 68 1/8 in

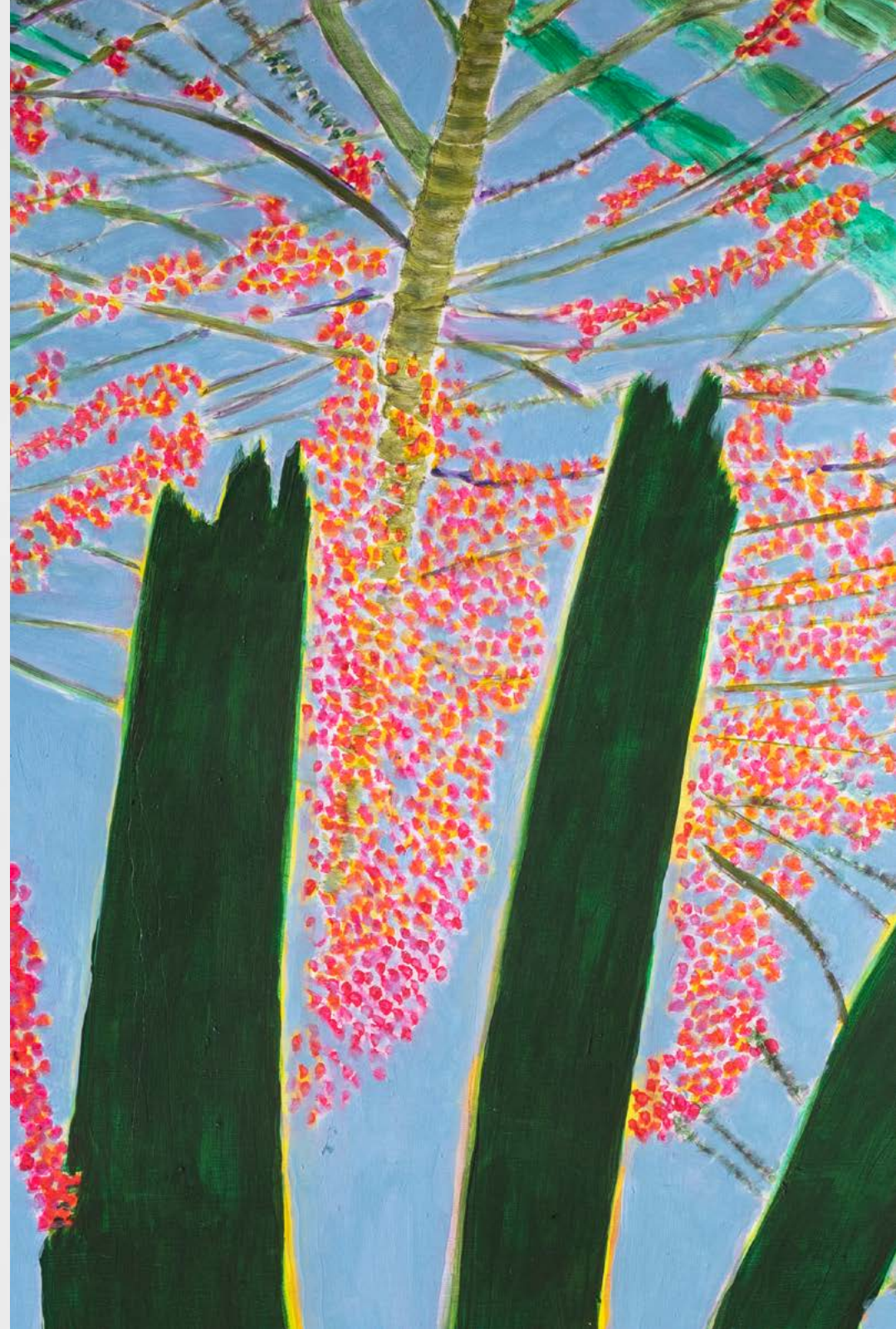
MW.MLK.294







Patricia Leite, *Palmeira-real*, 2023, oil on gamela, 34 x 55 x 9.5 cm | 13 3/8 x 21 5/8 x 3 3/4 in, MW.PLT.357





Castiel Vitorino Brasileiro

série my faith unapologetic/ my faith unapologetic series, 2022

oil on canvas

80 x 60 cm

31 1/2 x 23 5/8 in

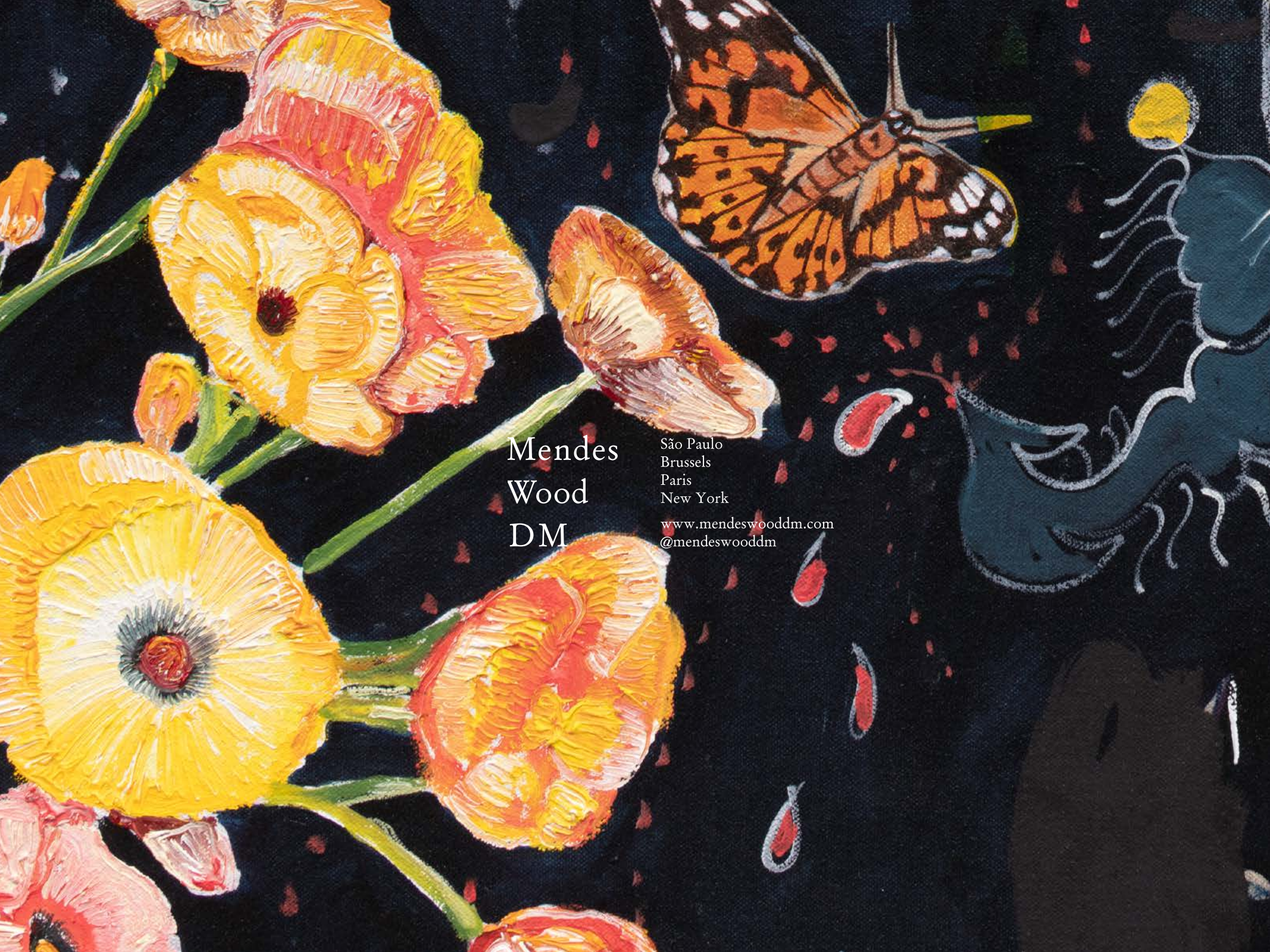
MW.CVB.009





Peter Shear, *Ghost Forest*, 2024, oil on canvas, 50.8 x 61 cm | 20 x 24 in, MW.PSH.002



The artwork is a rich oil painting on a dark, textured background. On the left, several large, stylized flowers in shades of yellow, orange, and red are depicted with thick, expressive brushstrokes. Their centers are dark and detailed. To the right, a monarch-style butterfly with orange and black wings is shown in flight. Scattered around the flowers and butterfly are small, delicate red petals. In the upper right corner, there is a stylized, dark blue or black silhouette of a figure or object with flowing, wavy lines, possibly representing a person or a piece of furniture. The overall composition is dynamic and colorful, contrasting sharply with the dark background.

Mendes
Wood
DM

São Paulo
Brussels
Paris
New York

www.mendeswooddm.com
[@mendeswooddm](https://www.instagram.com/mendeswooddm)