



LEHMANN MAUPIN

Art Basel Miami Beach
December 8–10, 2023
Booth B26
Miami Beach Convention Center
Miami, FL

NEW YORK HONG KONG SEOUL LONDON

lehmannmaupin.com

Art Basel Miami Beach

Friday, December 8 – Sunday, December 10, 2023

Preview Days: Wednesday, December 6 – Thursday, December 7, 2023

Booth B26

Miami Beach Convention Center

1901 Convention Center Drive

Miami Beach, FL 33139

Lehmann Maupin is pleased to announce details of its 22nd presentation at Art Basel Miami Beach with an exhibition that poetically merges painting, sculpture, photography, and installation. Presentation highlights include new works by Loriel Beltrán, Lee Bul, Mandy El-Sayegh, Teresita Fernández, Todd Gray, Chantal Joffe, Tammy Nguyen, Do Ho Suh, Nari Ward, and Erwin Wurm, which each resist traditional categorization in favor of storytelling. As part of the fair's Kabinett sector, OSGEMEOS will present an immersive, wallpapered installation including both painting and sculpture. Concurrent to the fair, Miami-based artist Hernan Bas—whom Lehmann Maupin has represented since 2009—will have a solo exhibition at The Bass Museum of Art, opening on December 4th.

Debating at the fair is a new wall-based work from Teresita Fernández's *Dark Earth* series. In this body of work, the artist transforms thousands of delicate slivers of raw charcoal into meticulously assembled relief images that suggest an expansive idea of place—from the ancient and subterranean to the futuristic and cosmic. Imagined as vertical cross-sections that span from underground geologic layers to heavenly realms, the works reveal bodies of subterranean water—typically invisible to the eye—embedded into the stratified earth. In the summer of 2024, Fernández will be the subject of a major two-artist museum exhibition alongside Robert Smithson at SITE Santa Fe in New Mexico.

Concurrent to Nari Ward's first solo exhibition in the United Kingdom—on view now at Lehmann Maupin London—the gallery's presentation at the fair includes a new installation work by the acclaimed multidisciplinary artist. In *His soul's marching on!* (2023)—which references a late 18th century marching song about abolitionist John Brown—Ward constructs the eponymous phrase from shoelaces inserted into the wall. The work reflects the artist's interest in collective expression and experience of language, particularly protest and public decrees. Ward bridges the devotional and activist elements of the song to shed light on what unites us—in this case, a powerful sense of endurance and persistence. In 2024, the artist will have a major exhibition at a prominent European institution, to be announced in the coming weeks.

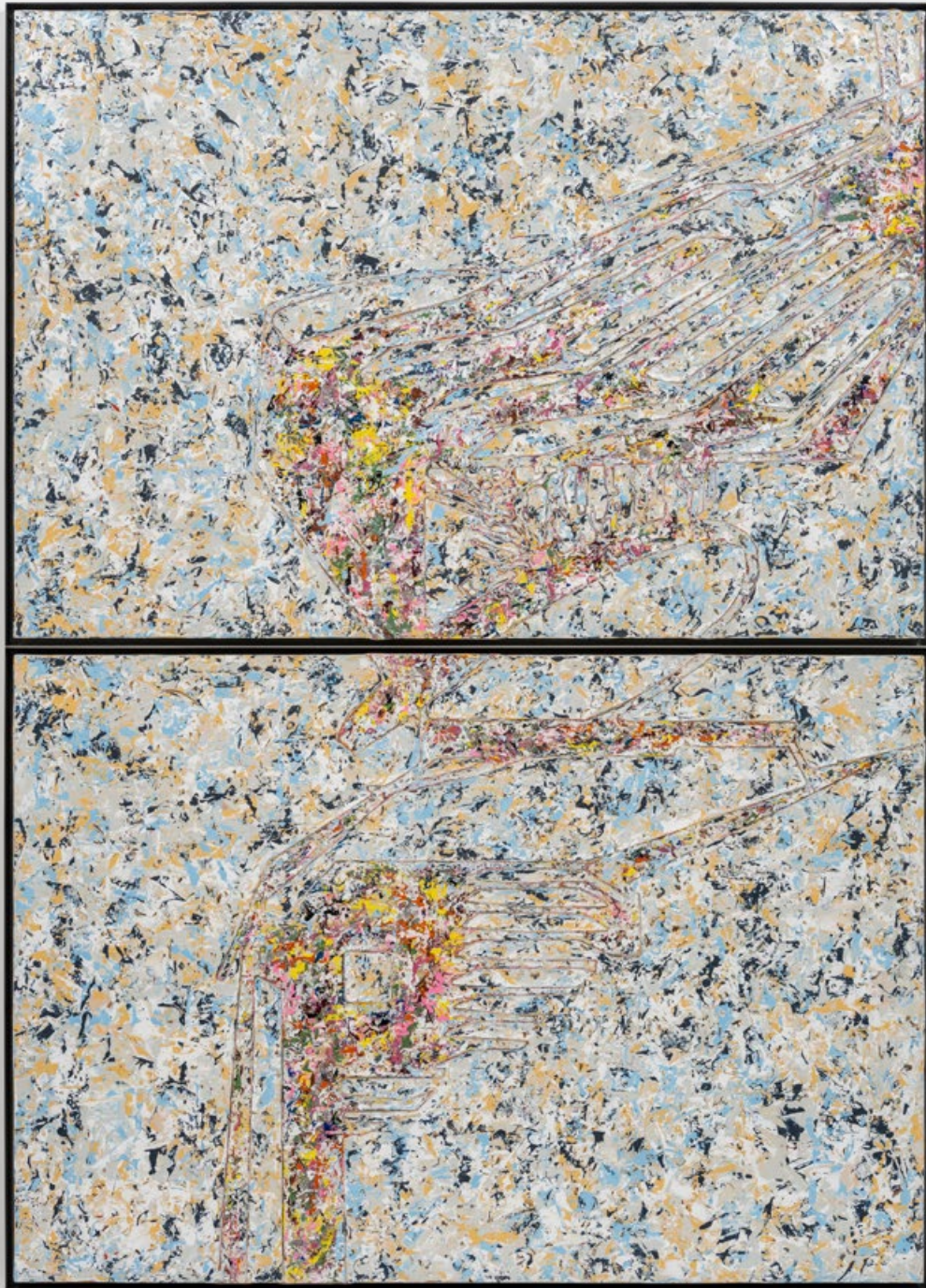
Two new paintings by Tammy Nguyen will also debut at the fair. Nguyen is known for paintings, drawings, artist books, prints, and zines that explore the intersections between geopolitics, ecology, and lesser-known histories. Nguyen's newest body of work considers the ways that language and narrative construct areas of moral ambiguity or ethical confusion using Dante Alighieri's

Divine Comedy as a visual paradigm. In the paintings on view, which take inspiration from the *Purgatorio* book in Dante's three-part masterpiece, the artist weaves a fictional narrative that merges Dante's storytelling with geopolitical theater concerning Cold War conflicts and projects in Southeastern Asia through many layers of dense imagery, pattern, and material. Nguyen's first solo museum exhibition is on view now at the ICA Boston through January 28, 2024.

As part of the fair's **Kabinett** sector—curated presentations situated within gallery booths across the fair—we will present an installation of new works by Brazilian artist duo OSGEMEOS, including new paintings and several sculptural works set against an immersive wallpaper. In their new works, the artists materialize their vivid inner landscapes, collapsing distinctions between body, architecture, and landscape to create a universe where the self converges with the wider world. OSGEMEOS combines traditional, folkloric, and contemporary elements of Brazilian culture with graffiti, hip-hop, music, dreamscapes, and international youth culture—their signature long limbed, yellow characters dance and play music against vibrant colors and elaborate patterns, constructing a symbolic visual language that is often charged with personal significance.

Other highlights at the booth include: new *Perdu* work by Korean artist Lee Bul; two new photo-based works by Todd Gray, who joined the gallery roster in October; new works by Miami-based artist, Loriel Beltrán, whose work is on view in the solo exhibition *Total Collapse* at Lehmann Maupin Seoul; a new painting by Mandy El-Sayegh, whose first monograph *The Makeshift Body* was released in October; an intimate portrait by Chantal Joffe, several new works from acclaimed artist Do Ho Suh's *Scaled Behaviour* series; and a recent sculptural work entitled *Mid-century dream* (2023) by Erwin Wurm, whose solo exhibition *Trap of the Truth* is currently on view at Yorkshire Sculpture Park.

Concurrent to the fair, Miami-based painter Hernan Bas will have a solo exhibition at the Bass Museum of Art, titled *The Conceptualists*. The exhibition features 35 paintings—including several works that debuted in the exhibition *The Conceptualists: Vol. II* at Lehmann Maupin New York last spring—and includes the artist's largest canvas to date, measuring some 9 x 21 feet. In *The Conceptualists*, Bas marries his personal appreciation of conceptual artists with his ongoing exploration of eccentricity. Whereas a number of prior works by the artist depict figures known as “enthusiasts” engaged in esoteric habits, this body of work reimagines absurdity and obsession as foundations of artistic practice.



LEE BUL

Perdu CLXXXVII

2023. Mother-of-pearl, acrylic paint on wooden base panel, stainless steel frame

diptych: 89.21 x 64.29 x 2.56 inches / 226.6 x 163.3 x 6.5 cm (framed)

Artwork can be installed in any orientation

LM36393

\$260,000 USD





LEE BUL

Perdu CLXXXIII

2023. Mother-of-pearl, acrylic paint on wooden base panel, stainless steel frame

diptych: 64.29 x 89.21 x 2.56 inches / 163.3 x 226.6 x 6.5 cm (framed)

Artwork can be installed in any orientation

LM36051

\$260,000 USD





LEE BUL

Perdu CLXXXVI

2023. Mother-of-pearl, acrylic paint on wooden base panel, stainless steel frame
diptych: 89.21 x 64.29 x 2.56 inches / 226.6 x 163.3 x 6.5 cm (framed)

LM36186

\$260,000 USD





KADER ATTIA

Mirrors and Masks

2023. Wooden mask, mirrors, pigment, glue, metal stand

14.96 x 7.87 x 5.91 inches / 38 x 20 x 15 cm

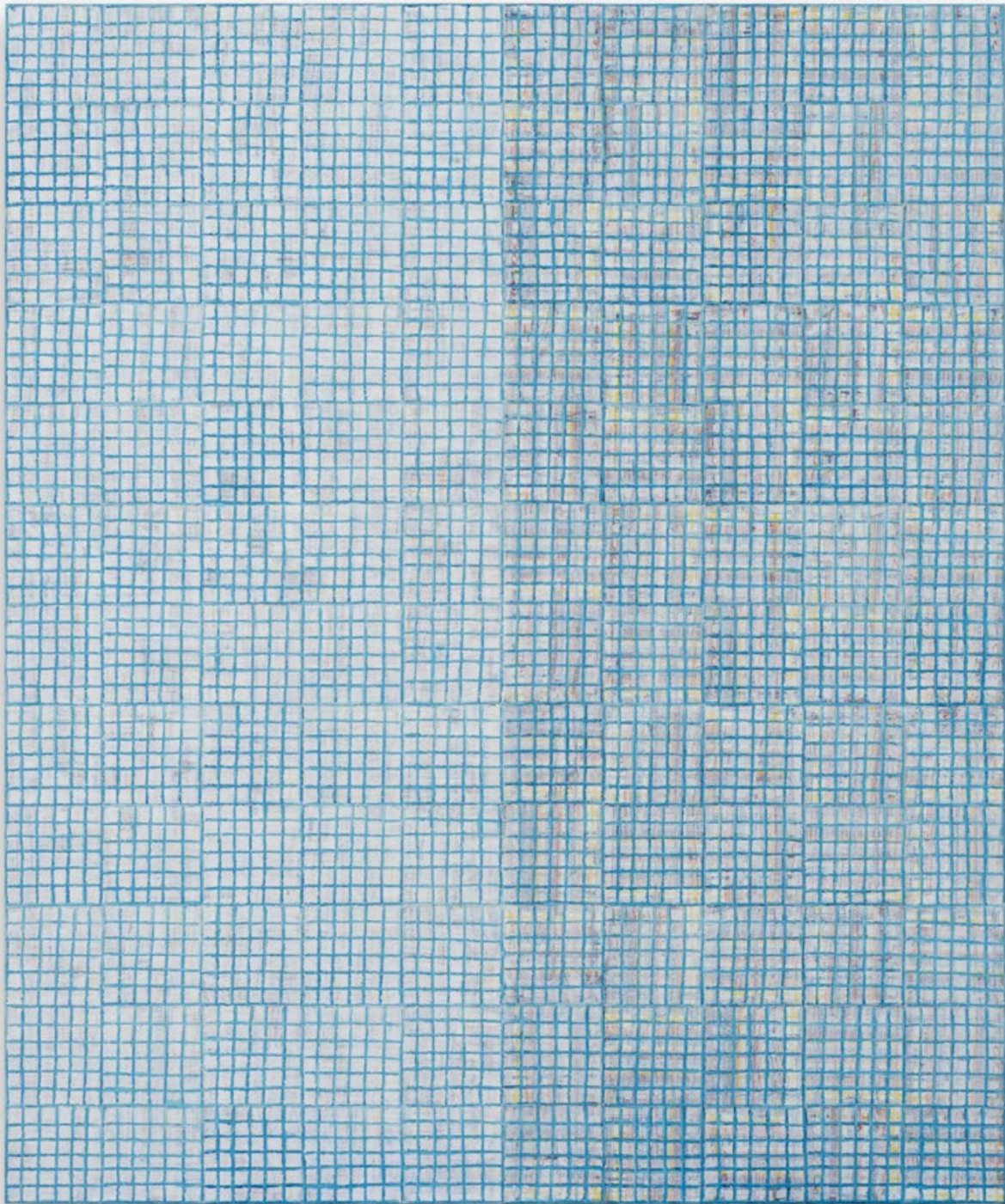
Dimensions of metal stand:

Base: 9.84 x 9.84 x 1.18 inches / 25 x 25 x 3 cm

Stand: 62.99 inches / 160 cm

LM36171

€90,000 EUR



MCARTHUR BINION

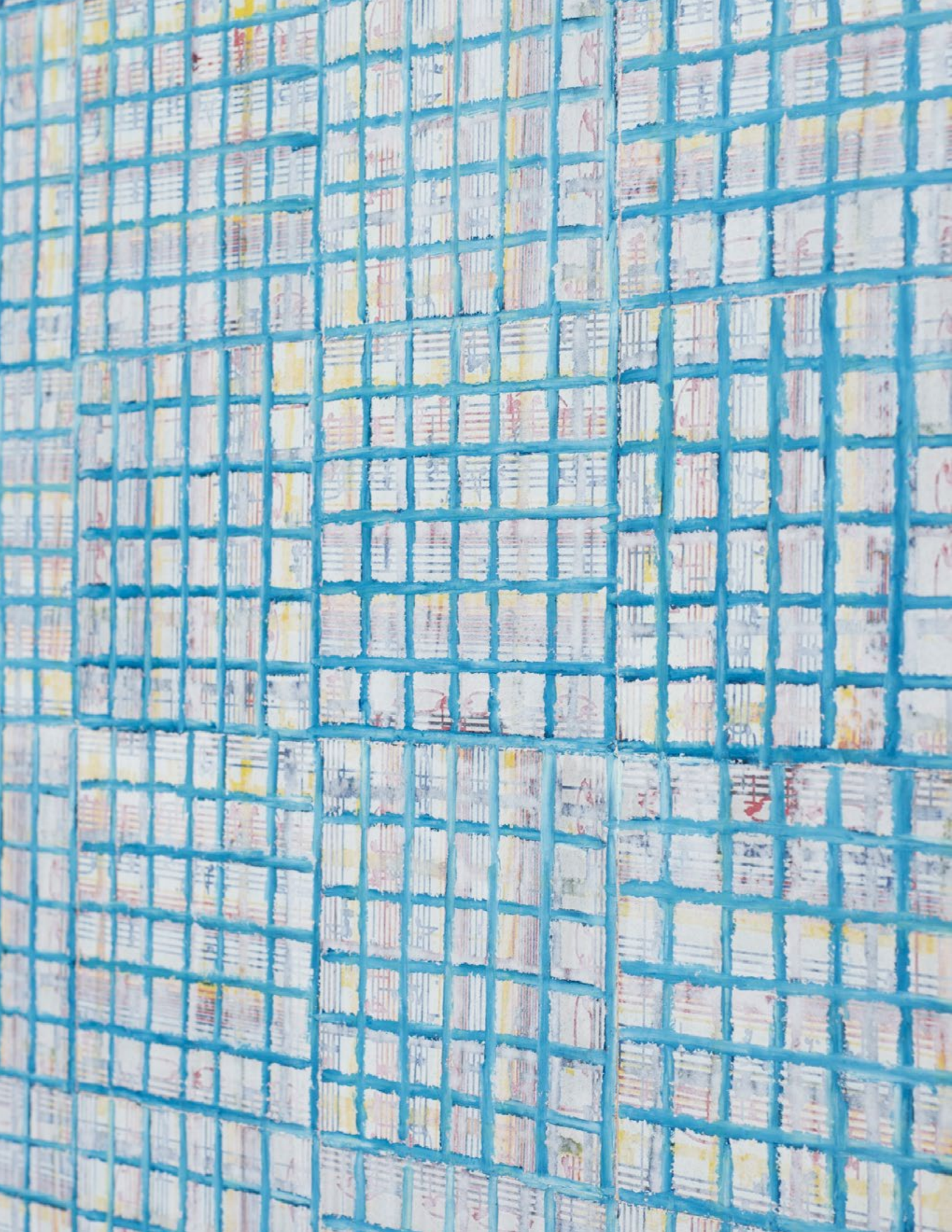
Visual:Ear

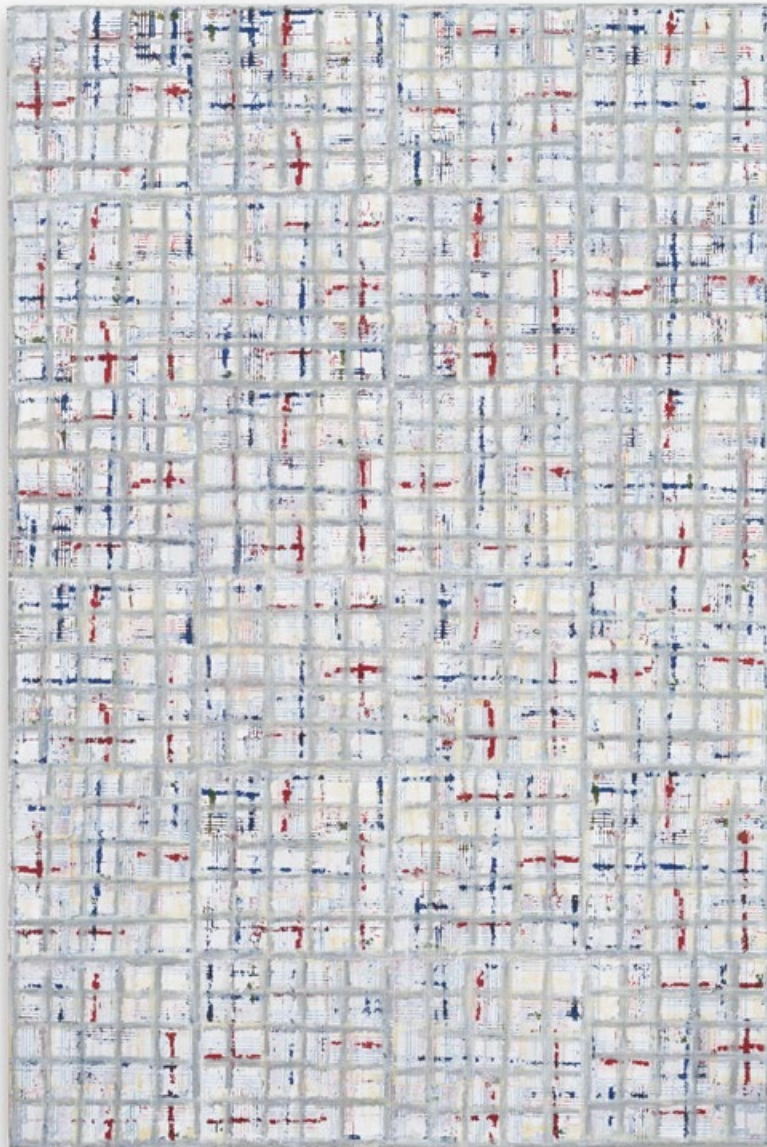
2023. Oil stick and paper on board

48 x 40 inches / 121.9 x 101.6 cm

LM36303

\$150,000 USD





MCARTHUR BINION

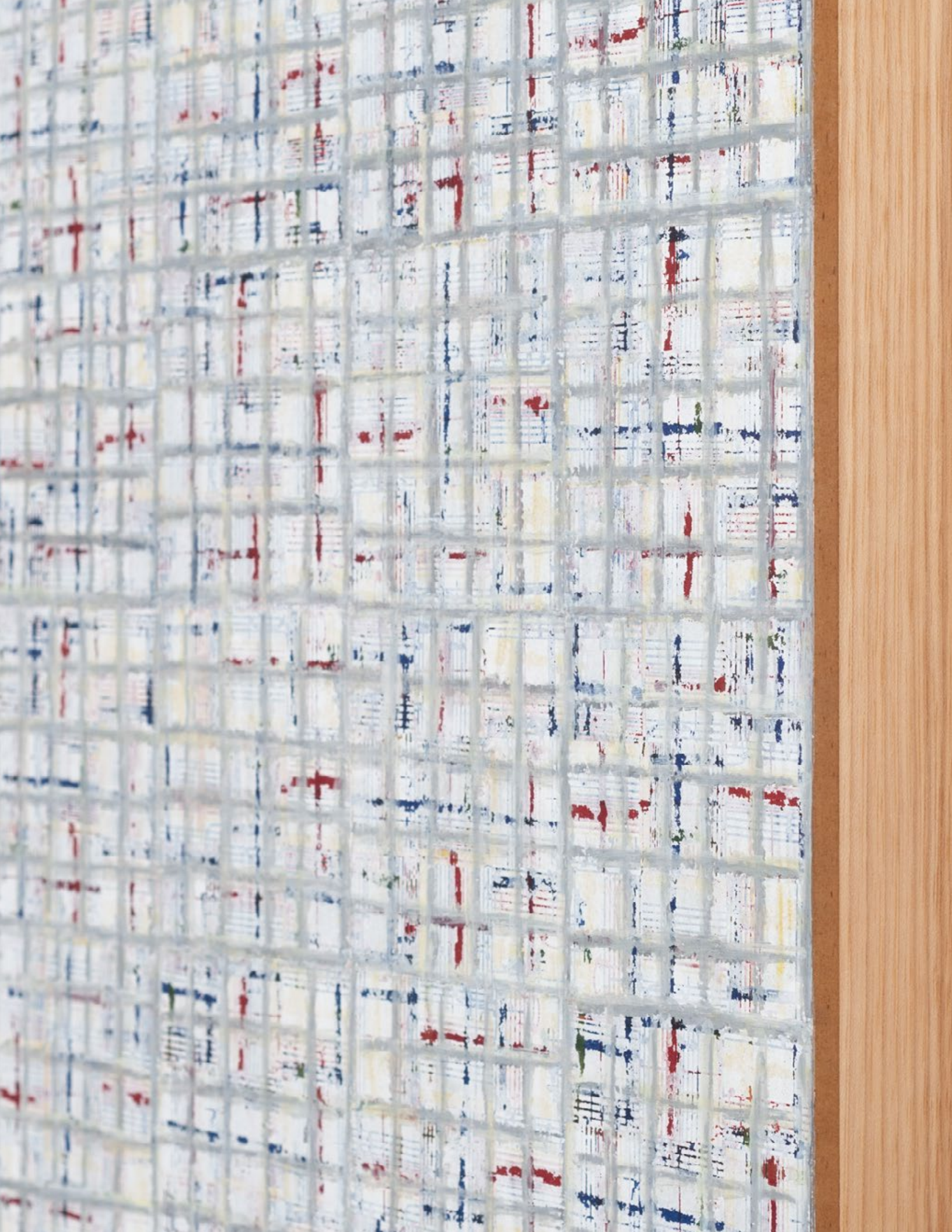
visual:ear

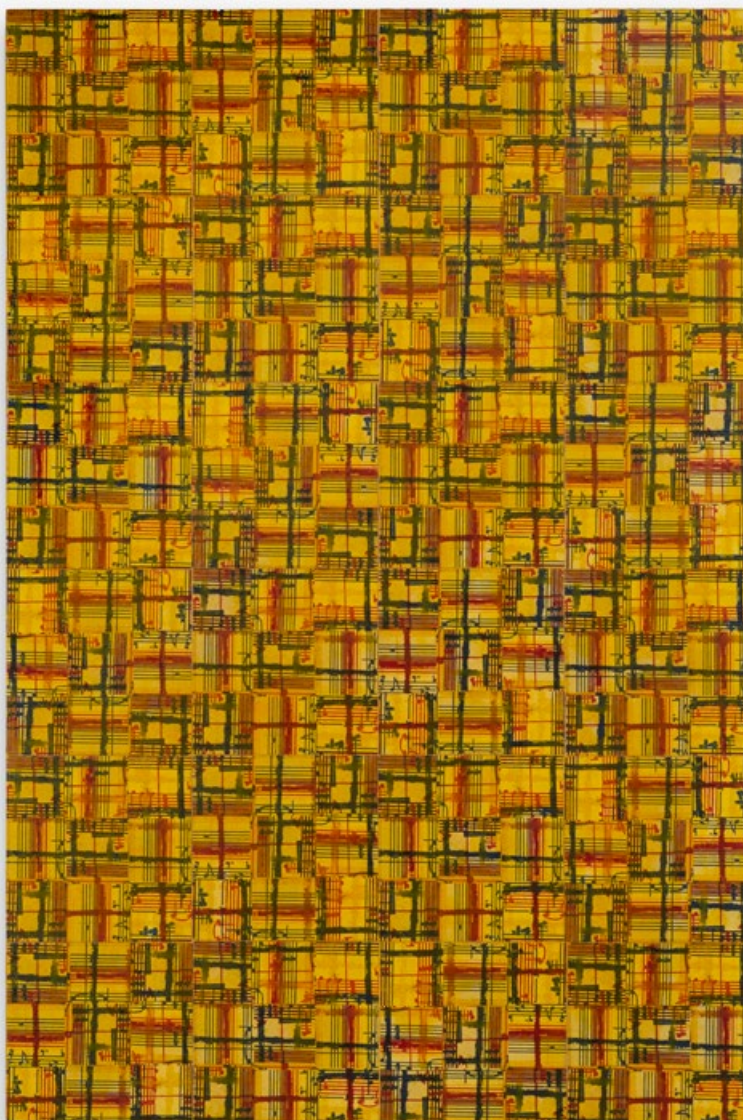
2023. Paper, ink, and paint stick on board

18 x 12 x 1.75 inches / 45.7 x 30.5 x 4.44 cm

LM35835

\$40,000 USD





MCARTHUR BINION

visual:ear

2023. Paper, ink, and paint stick on board

18 x 12 x 1.75 inches / 45.7 x 30.5 x 4.44 cm

LM35978

\$40,000 USD





MCARTHUR BINION

Self:Portrait

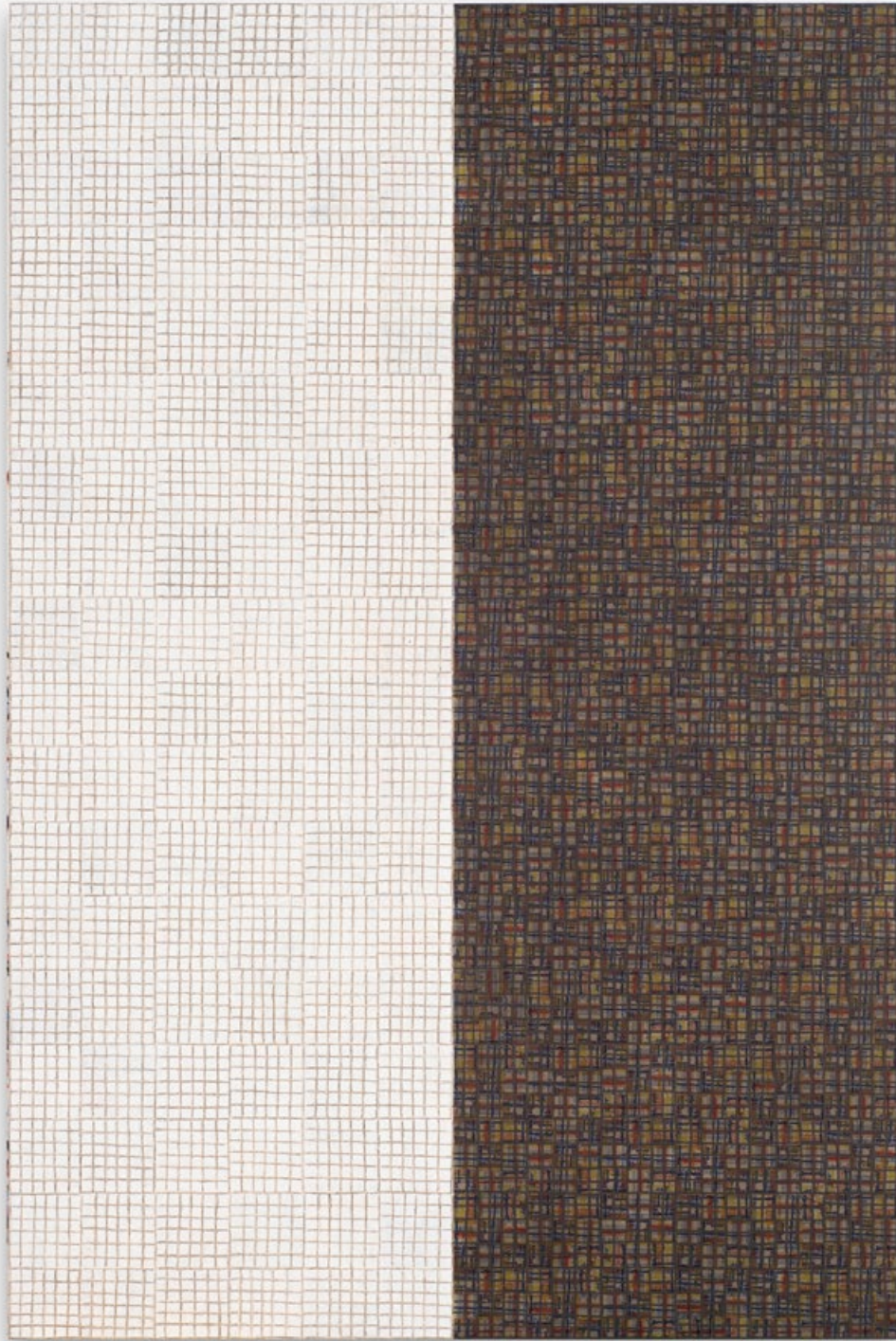
2022. Ink, paint stick, and paper on board

18 x 12 x 1.75 inches / 45.7 x 30.5 x 4.44 cm

LM35977

\$40,000 USD





MCARTHUR BINION

DNA:Study/(Visual:Ear)

2023. Oil stick and paper on board

72 x 48 x 2.5 inches / 182.9 x 121.9 x 6.35 cm

LM35696

\$250,000 USD





TODD GRAY

Green:Green

2023. Two archival pigment prints in artist's frames, UV laminate

61.125 x 48.125 x 4 inches / 155.3 x 122.2 x 10.2 cm

LM36337

\$70,000 USD



TODD GRAY

Shaman (Akwidaa / Paris)

2023. Three archival pigment prints in artist's frames, UV laminate

60.125 x 45.125 x 4.75 inches / 152.7 x 114.6 x 12.1 cm

LM36338

\$65,000 USD

KABINETT



OSGEMEOS

Guitarrada

2023. Mixed media with sequins on MDF board

80.31 x 64.57 x 4.33 inches / 204 x 164 x 11 cm

LM36146

\$250,000 USD

KABINETT



OSGEMEOS

Luz Própria (Own Light)

2023. Mixed media with sequins on MDF board

80.31 x 64.57 x 4.33 inches / 204 x 164 x 11 cm

LM36147

\$250,000 USD

KABINETT



OSGEMEOS

Bemmal me quer / Love, Love me not me quer

2022. Mixed media with sequins on MDF board

74.8 x 109.84 x 4.33 inches / 190 x 279 x 11 cm

LM34203

\$300,000 USD

KABINETT



OSGEMEOS

Chegando perto do sol (Getting close to the sun)

2022. Mixed media on MDF board with sequins and glitter

80.31 x 64.57 x 4.33 inches / 204 x 164 x 11 cm

LM36145

\$250,000 USD

KABINETT



OSGEMEOS

The lyrical

2018. Acrylic, spray paint, and sequins on board

74.41 x 109.84 inches / 189 x 279 cm LM28878

\$300,000 USD



TOM FRIEDMAN

Medium Huddle

2023. Stainless steel

33 x 42.5 x 42.5 inches / 83.8 x 108 x 108 cm

Edition of 3

LM35379

\$350,000 USD





TERESITA FERNÁNDEZ

Dark Earth (Cosmos)

2019. Solid charcoal and mixed media on chromed panel

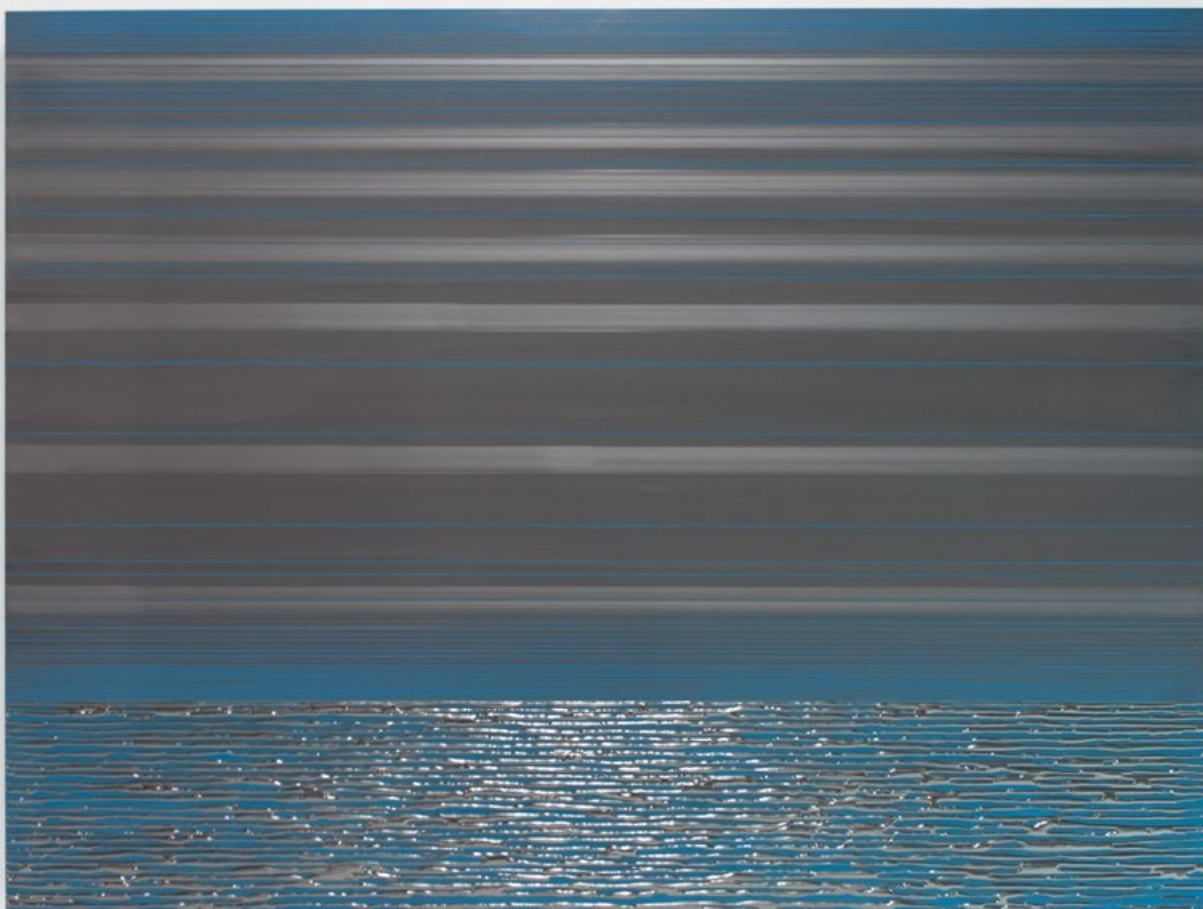
3 panels, each: 80 x 64 x 2 inches / 203.2 x 162.6 x 5.1 cm

80 x 192 x 2 inches / 203.2 x 487.7 x 5.1 cm (overall)

LM20864

\$500,000 USD





TERESITA FERNÁNDEZ

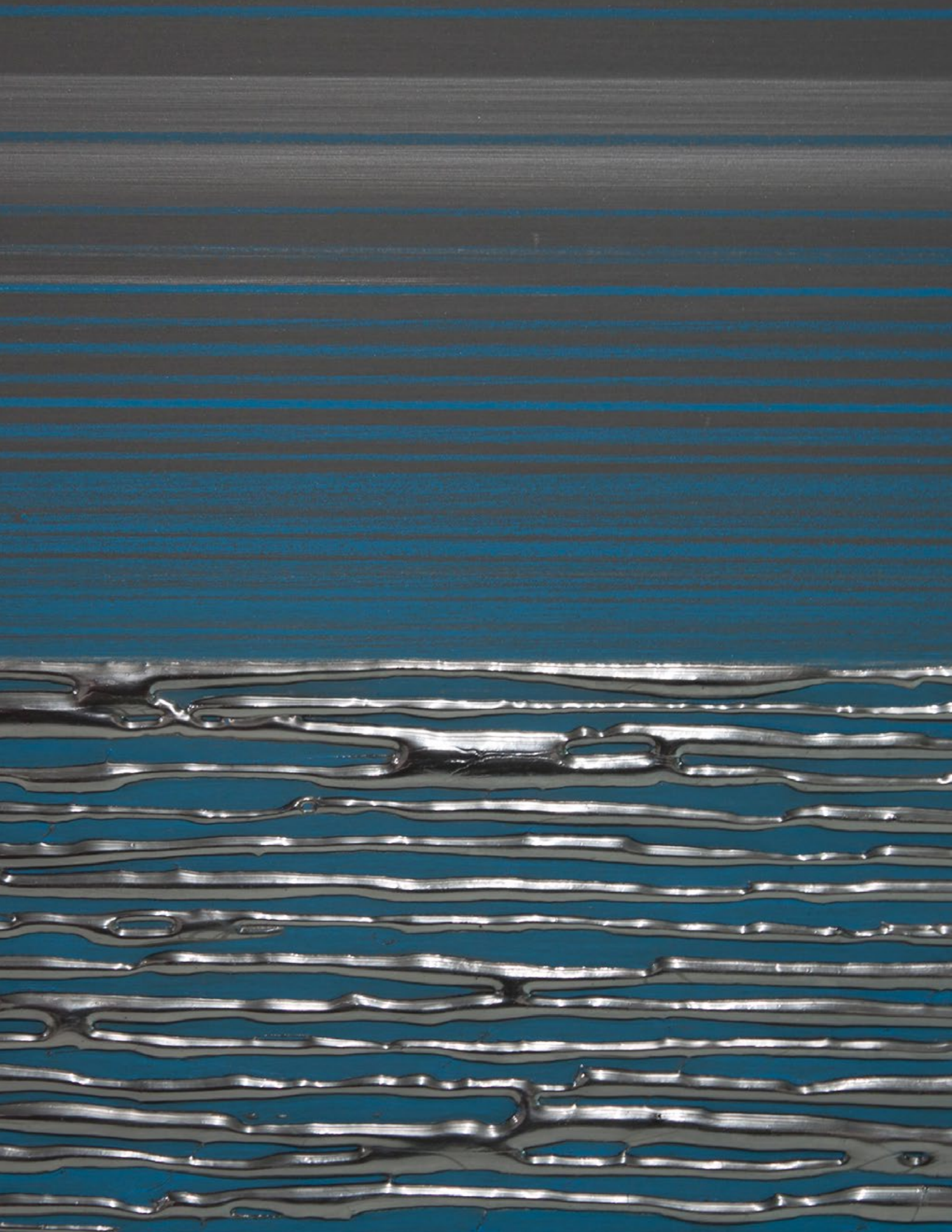
Nocturnal (Blue/Black 2)

2014. Solid graphite and pencil on wood panel

36 x 48 inches / 91.4 x 121.9 cm

LM20763

\$250,000 USD





NARI WARD

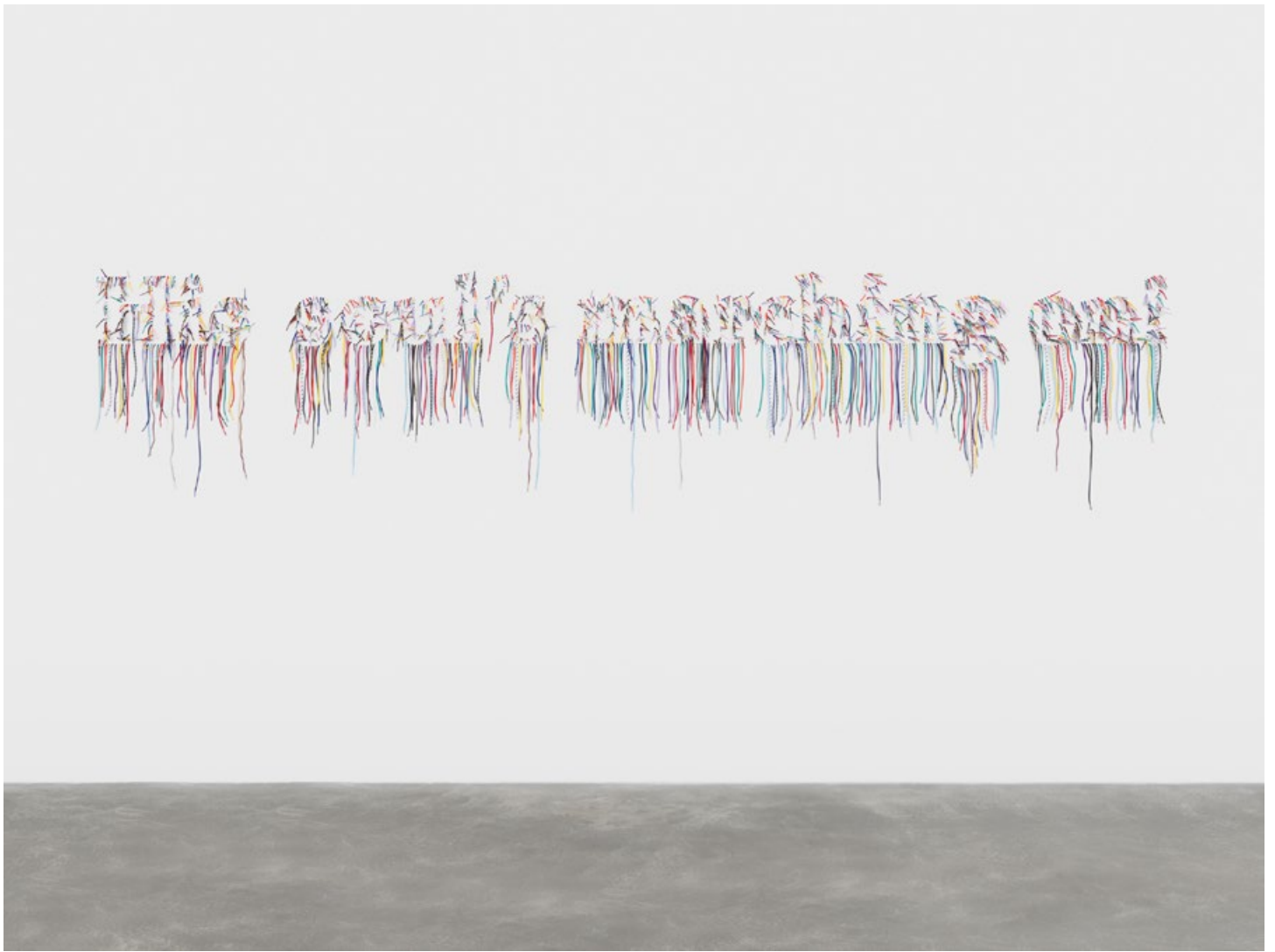
Screen Rites Up

2023. Copper sheet

23 x 11.5 x 2.5 inches / 58.4 x 29.2 x 6.35 cm

LM33141

\$65,000 USD



NARI WARD

His soul's marching on!

2023. Shoelace

37.5 x 157 x 1.5 inches / 95.3 x 398.8 x 3.81 cm

LM35923

\$150,000 USD





LARI PITTMAN

Sparkling City With Egg Monuments #6

2023. Acrylic and lacquer spray on gessoed canvas over wood panel

96 x 80 x 2 inches / 243.8 x 203.2 x 5.1 cm

LM35732

\$350,000 USD





DO HO SUH

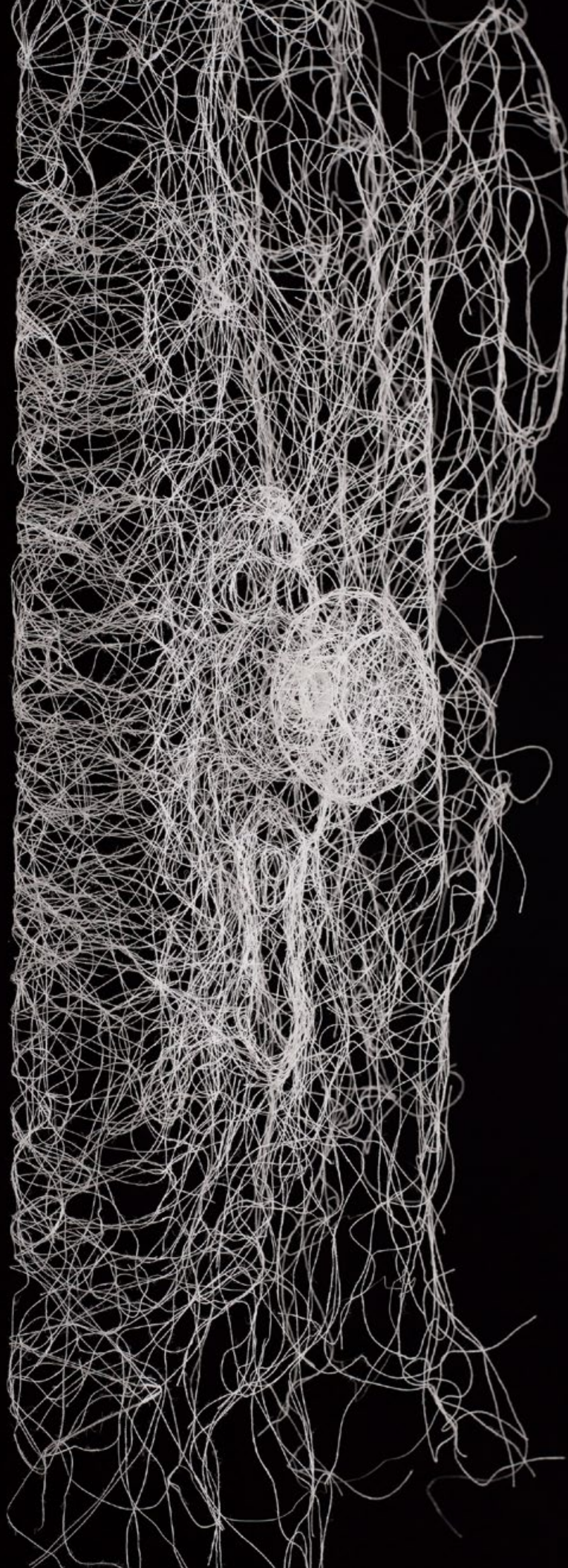
ScaledBehaviour_runOn(doorknob_2.25.3)

2023. Thread and resin

45.08 x 34.65 x 6.69 inches / 114.5 x 88 x 17 cm (framed)

LM35991

\$65,000 USD





HEIDI BUCHER

Das Wundband

1979. Textile, latex, and mother of pearl pigments

61.02 x 38.58 inches / 155 x 98 cm

LM35137

250,000 CHF





HEIDI BUCHER

Puerta Chimida verde

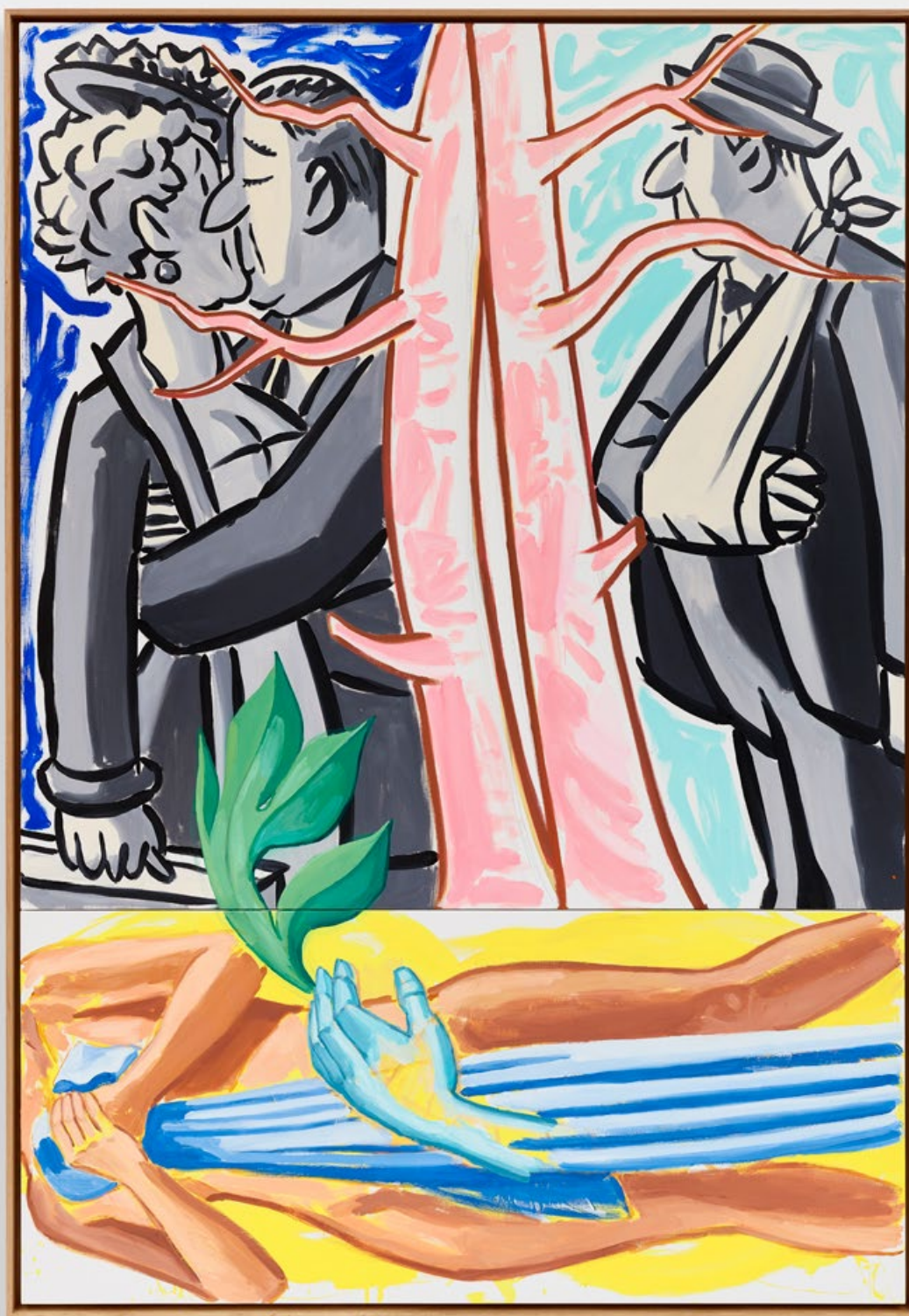
1984. Latex and cotton on canvas

88.58 x 51.18 inches / 225 x 130 cm

LM35699

300,000 CHF





DAVID SALLE

Tree of Life, Rival

2023. Oil and acrylic on canvas

78 x 54 x 2.5 inches / 198.1 x 137.2 x 6.35 cm (artwork)

79.75 x 55.75 x 2.63 inches / 202.6 x 141.6 x 6.7 cm (framed)

LM35726

\$325,000 USD



DAVID SALLE

Tree of Life, Old Friends

2023. Oil and acrylic with pencil on linen

56 x 42 x 1.5 inches / 142.2 x 106.7 x 3.8 cm (artwork)

57.75 x 43.75 x 2.75 inches / 146.68 x 111.12 x 6.98 cm (framed)

LM35916

\$250,000 USD



DAVID SALLE

Tree of Life, Purple Ground

2023. Oil, acrylic, and pencil on linen

56 x 42 x 1.5 inches / 142.2 x 106.7 x 3.8 cm (artwork)

57.75 x 43.75 x 2.75 inches / 146.68 x 111.12 x 6.98 cm (framed)

LM35915

\$250,000 USD



ERWIN WURM

Mid-century dream

2023. Chair, light, metal, glass, bottles, glasses

45.08 x 36.61 x 26.77 inches / 114.5 x 93 x 68 cm

LM35555

€75,000 EUR





ERWIN WURM

Melt

(Flat Series)

2021. Acrylic and oil paint on canvas

39.37 x 31.5 x 1.77 inches / 100 x 80 x 4.5 cm

LM33174

€60,000 EUR



ERWIN WURM

Stone

2018. Acryl and stone

17.13 x 20.08 x 14.57 inches / 43.5 x 51 x 37 cm

LM29182

€40,000 EUR



ERWIN WURM

Wait

(Taschenskulpturen)

2021. Bronze

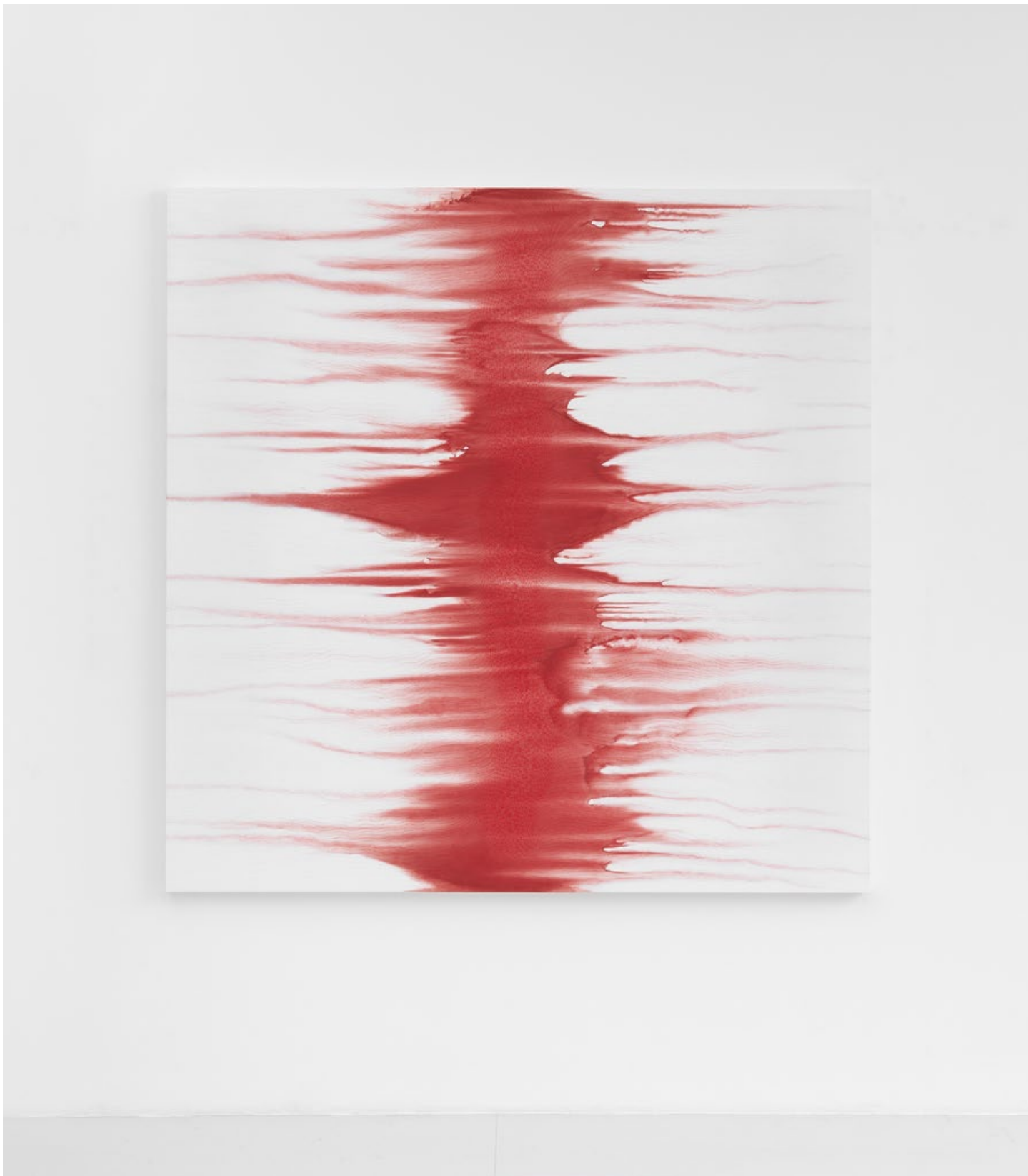
89.57 x 22.05 x 11.81 inches / 227.5 x 56 x 30 cm

Edition of 3

LM33177

€190,000 EUR





SHIRAZEH HOUSHIARY

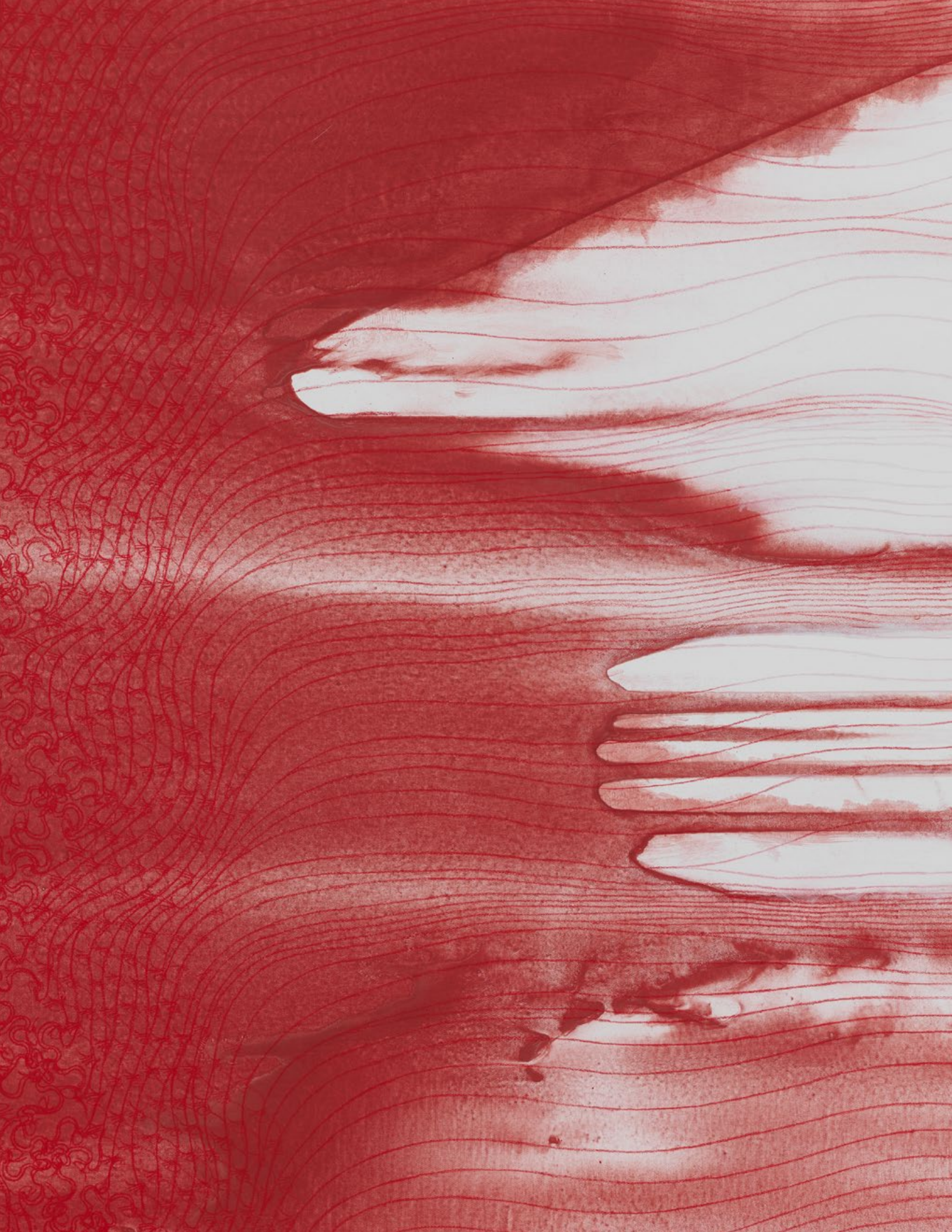
Styx

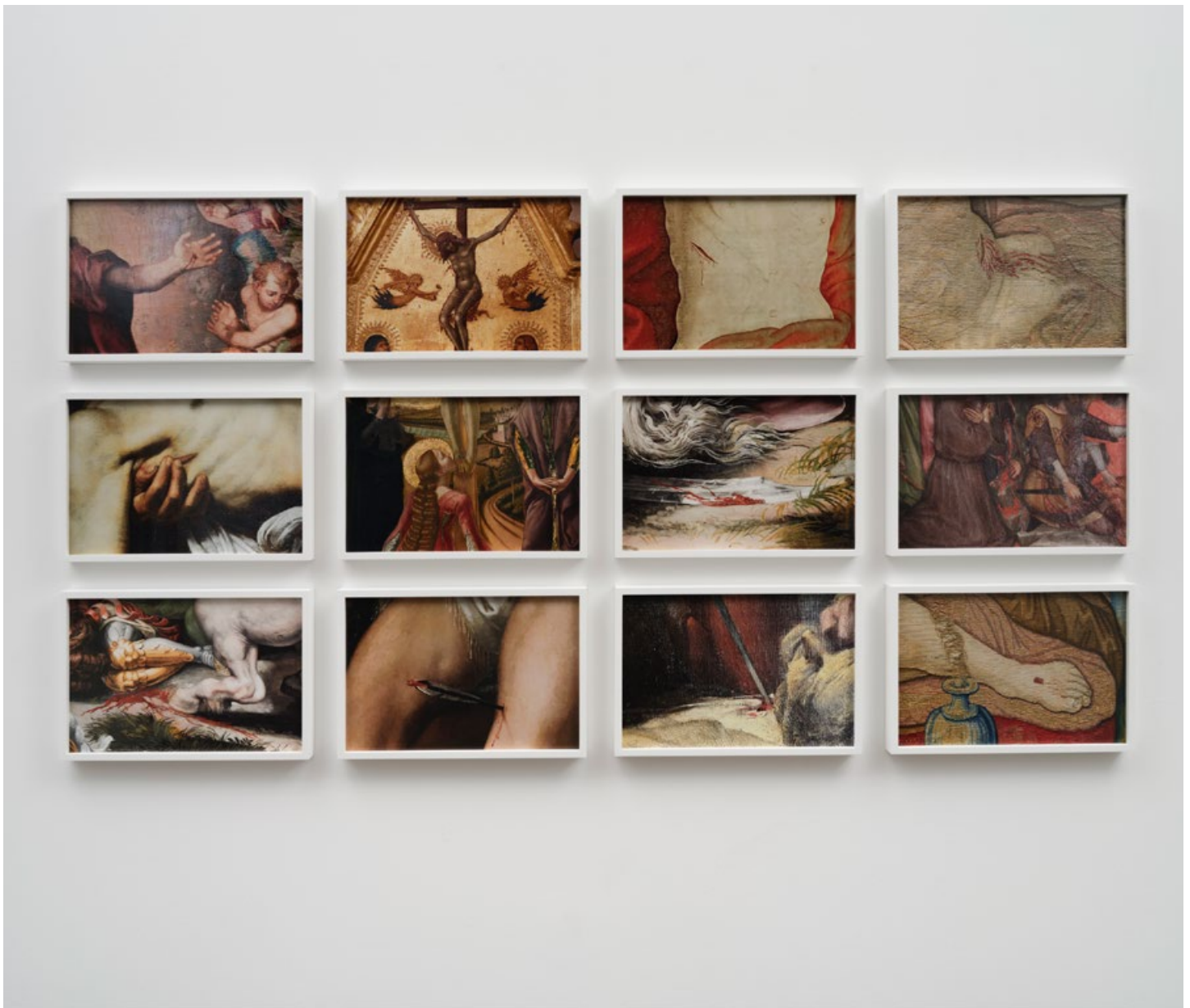
2018. Pigment, pencil, and white aquacryl on canvas and aluminum

74.8 x 74.8 inches / 190 x 190 cm

LM29418

£275,000 GBP





CATHERINE OPIE

Blood Grid #2

2023. Pigment print

12 prints, each: 11 x 16.5 inches / 27.9 x 41.9 cm (print)

11.75 x 17.25 x 1.5 inches / 29.84 x 43.81 x 3.81 (each panel framed)

39.25 x 75 x 1.5 inches / 99.69 x 190.5 x 3.81 cm (overall framed)

Edition of 5

LM35467

\$75,000 USD



CATHERINE OPIE

Untitled #2 (Windows)

2023. Pigment print

40 x 27 inches / 101.6 x 68.6 cm (image)

41 x 27.75 x 2 inches / 104.14 x 70.48 x 5.08 cm (framed)

Edition of 5

LM35427

\$45,000 USD



CATHERINE OPIE

Untitled #7 (Windows)

2023. Pigment print

40 x 27 inches / 101.6 x 68.6 cm (image)

41 x 27.75 x 2 inches / 104.14 x 70.48 x 5.08 cm (framed)

Edition of 5

LM35437

\$45,000 USD



CATHERINE OPIE

Untitled #9 (Windows)

2023. Pigment print

40 x 27 inches / 101.6 x 68.6 cm (image)

41 x 27.75 x 2 inches / 104.14 x 70.48 x 5.08 cm (framed)

Edition of 5

LM35441

\$45,000 USD



ANGEL OTERO

SK-FZ

2012. Oil paint and oil paint skins collaged on canvas

86 x 107 x 4 inches / 218.4 x 271.8 x 10.2 cm LM16431

\$300,000 USD





ANGEL OTERO

Winking Stars

2015. Oil paint and fabric collaged on canvas

84 x 60 x 2.5 inches / 213.4 x 152.4 x 6.4 cm

LM22430

\$200,000 USD





ALEX PRAGER

Glory

2022. Archival pigment print

36 x 49.4 inches / 91.4 x 125.5 cm (print)

37.25 x 50.75 x 2.25 inches / 94.61 x 128.90 x 5.71 cm (framed)

Edition of 6

LM34363

\$40,000 USD



ALEX PRAGER

Twilight

2021. Archival pigment print

48 x 41.5 inches / 121.9 x 105.4 cm (print)

49 x 42.5 x 2 inches / 124.46 x 107.95 x 5.08 cm (framed)

Edition of 6

LM33339

\$35,000 USD



LORIEL BELTRÁN

Color that pours from tar

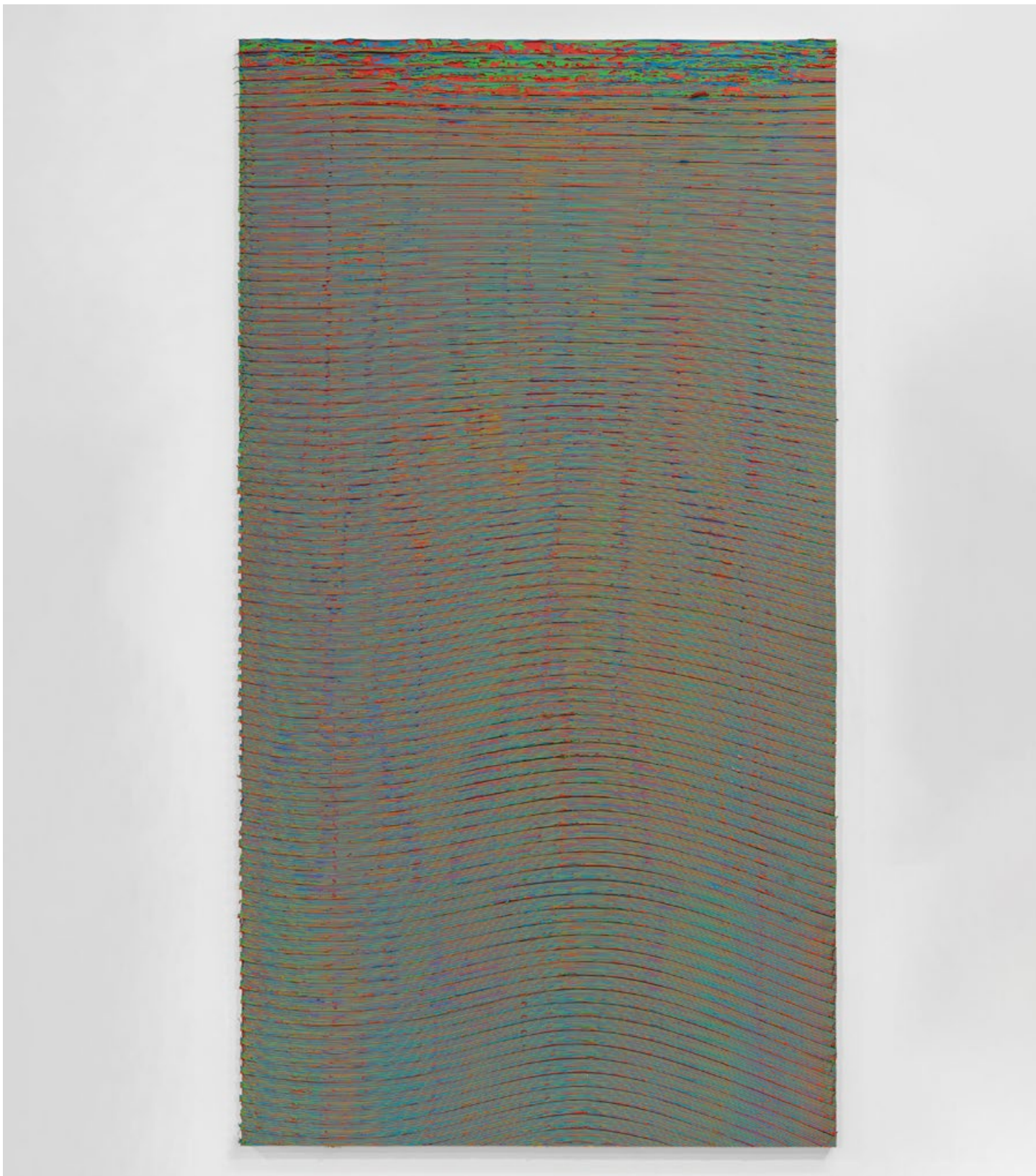
2023. Latex paint on panel

108 x 79 inches / 274.3 x 200.7 cm

LM36394

\$90,000 USD





LORIEL BELTRÁN

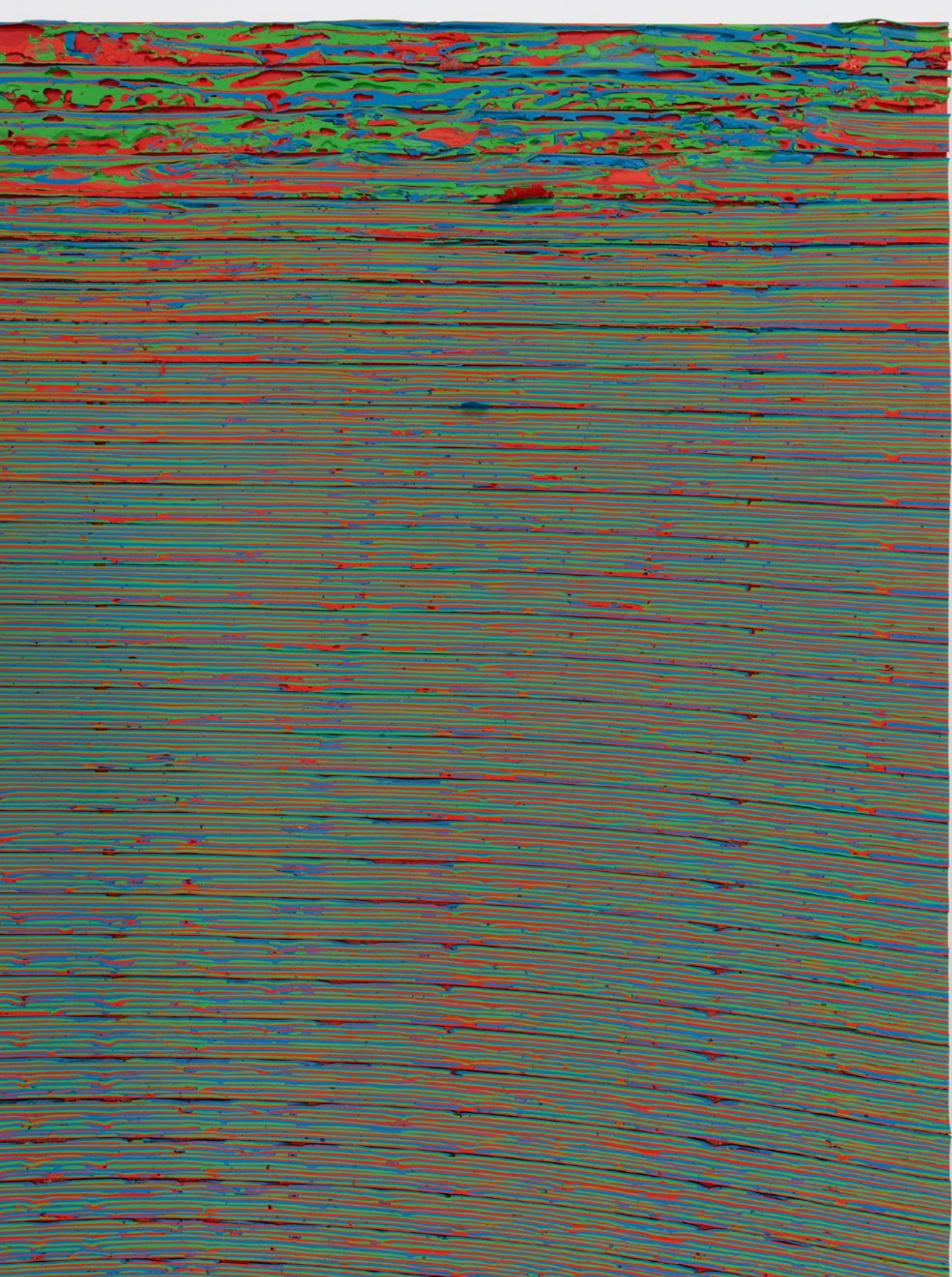
RGB

2023. Latex paint on panel

75 x 40 inches / 190.5 x 101.6 cm

LM36406

\$45,000 USD





CHANTAL JOFFE

Moll at Marina

2015. Oil on board

40.16 x 29.92 x 1.5 inches / 102 x 76 x 3.81 cm

LM34994

£50,000 GBP



CHANTAL JOFFE

Self-Portrait in a White Shirt

2022. Oil on board

24.02 x 17.91 inches / 61 x 45.5 cm

LM34998

£30,000 GBP



LIZA LOU

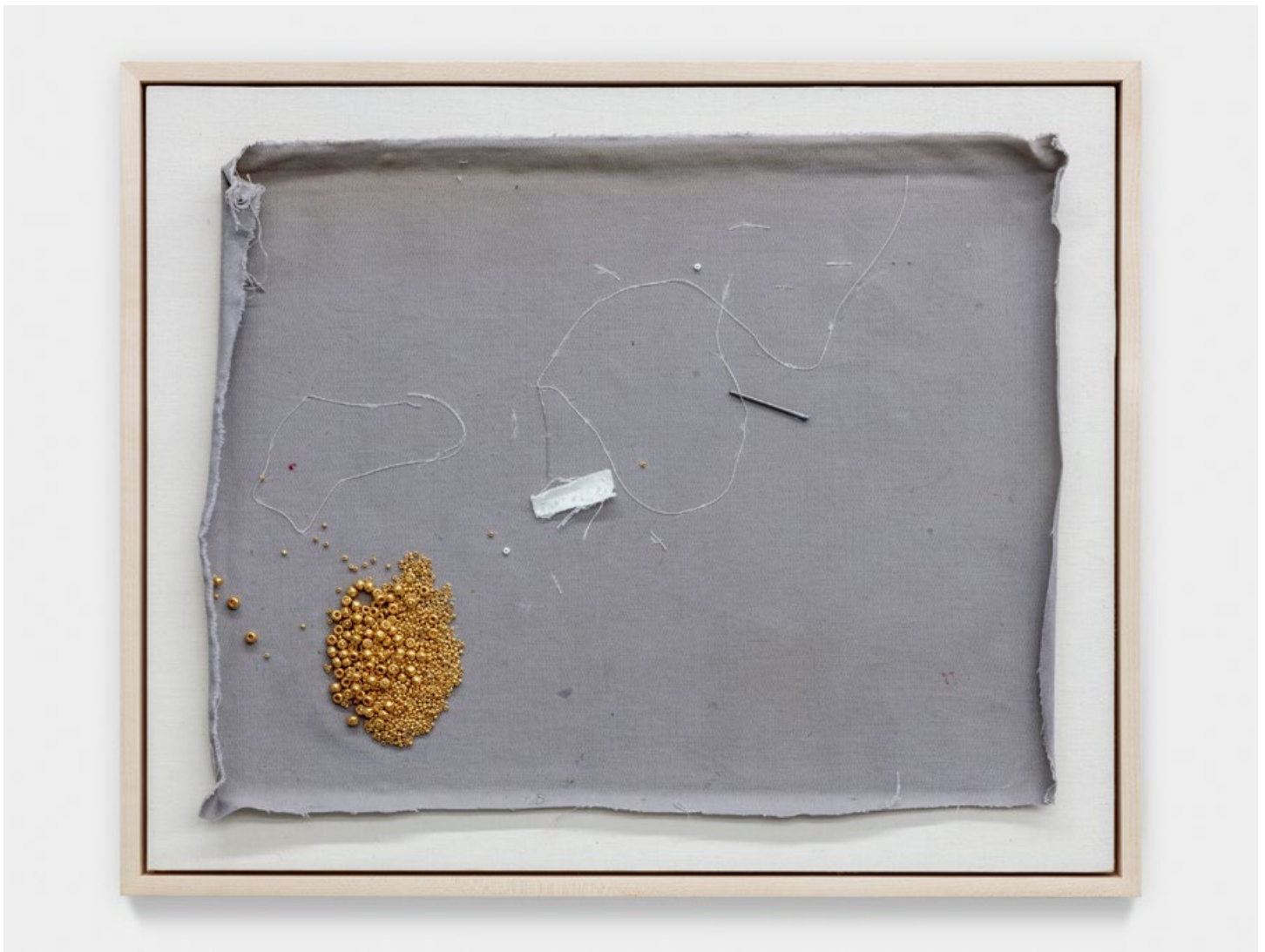
Citrine | Solid

2012-2014. Woven glass beads

65.35 x 65.35 inches / 166 x 166 cm

LM31513

\$225,000 USD



LIZA LOU

In Medias Res 11:17

2017. Glass beads, spool of thread on naturally stained fabric mounted on wood

15 x 18.75 inches / 38.1 x 47.6 cm

16.25 x 19.75 x 1.5 inches / 41.3 x 50.2 x 3.8 cm (framed)

LM36132

\$35,000 USD



LIZA LOU

In Medias Res 14:31

2017. Glass beads on naturally stained and wrinkled fabric mounted on wood

14.25 x 17.25 inches / 36.2 x 43.8 cm

15.25 x 18.25 x 1.5 inches / 38.73 x 46.35 x 3.81 cm (framed)

LM36136

\$35,000 USD



LIZA LOU

In Medias Res 15:40

2017. Glass beads, needle, thread and paper on fabric mounted on wood

18.75 x 14.25 inches / 47.6 x 36.2 cm

20 x 15.25 x 1.5 inches / 50.8 x 38.7 x 3.8 cm (framed)

LM36125

\$35,000 USD



LIZA LOU

In Medias Res 8:20

2017. Glass beads, needle on naturally folded fabric mounted on wood

14.25 x 17.25 inches / 36.2 x 43.8 cm

15.25 x 18.25 x 1.5 inches / 38.73 x 46.35 x 3.81 cm (framed)

LM36129

\$35,000 USD



BILLY CHILDISH

flying the flag

2023. Oil and charcoal on linen

72.05 x 96.06 inches / 183 x 244 cm

LM35927

€70,000 EUR



BILLY CHILDISH

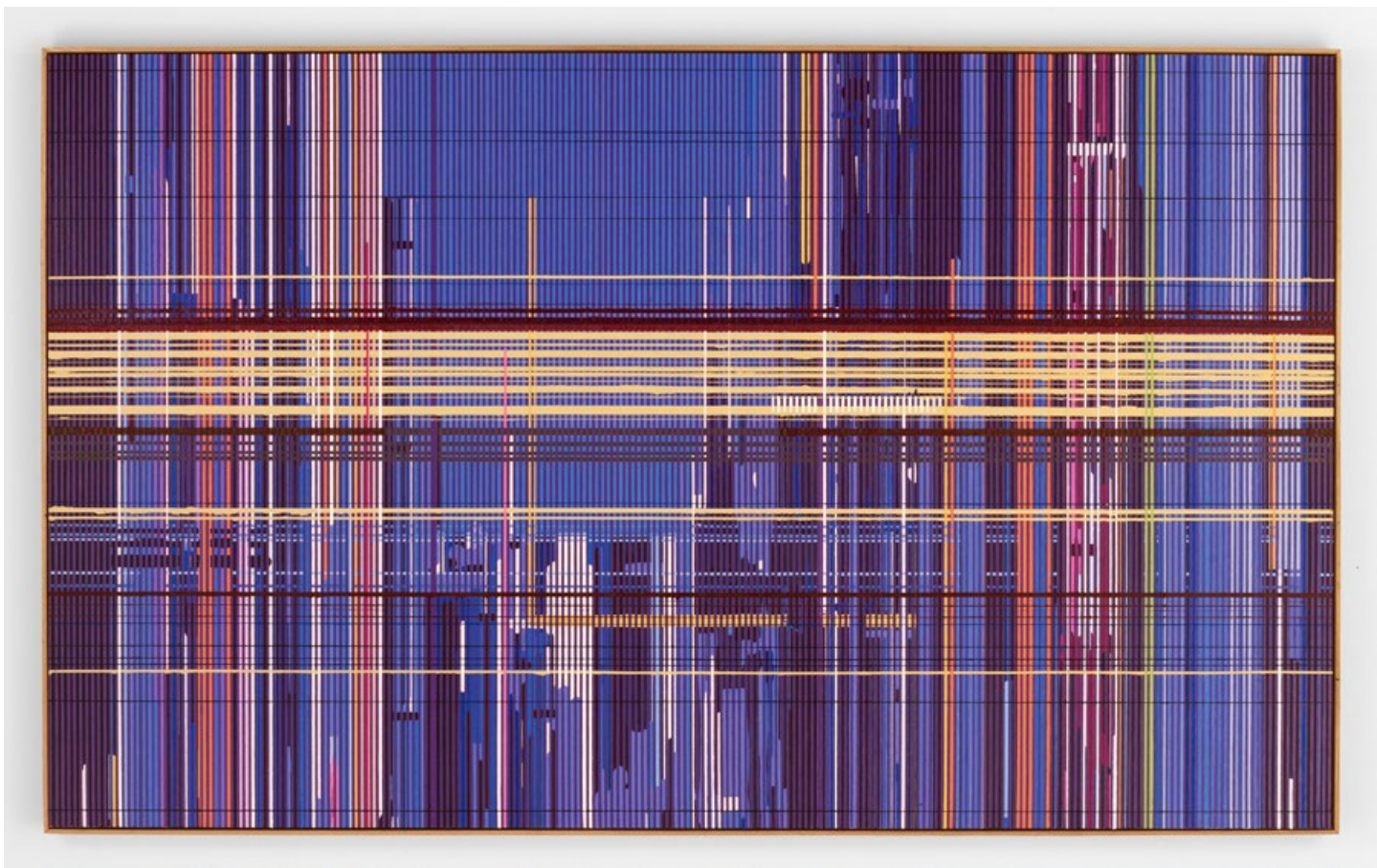
under bridge, edwards crossing

2023. Oil and charcoal on linen

72.05 x 72.05 inches / 183 x 183 cm

LM36347

€60,000 EUR



LIU WEI

Truth Dimension No. 5

2013. Oil on canvas

70.87 x 118.11 inches / 180 x 300 cm

LM17266

\$325,000 USD



ROBIN RHODE

Buchu

2022. C-print

2 panels, each:

30.55 x 40.39 x 1.5 inches / 77.6 x 102.6 x 3.81 cm (framed)

30.55 x 82.76 x 1.5 inches / 77.6 x 210.2 x 3.81 cm (overall, horizontal)

63.07 x 40.39 x 1.5 inches / 160.2 x 102.6 x 3.81 cm (overall, vertical)

Artwork can be installed horizontally or vertically

Edition of 5

LM34485

€50,000 EUR



ROBIN RHODE

Taraxacum

2022. C-print

2 panels, each:

30.55 x 40.39 x 1.5 inches / 77.6 x 102.6 x 3.81 cm (framed)

30.55 x 82.76 x 1.5 inches / 77.6 x 210.2 x 3.81 cm (overall, horizontal)

63.07 x 40.39 x 1.5 inches / 160.2 x 102.6 x 3.81 cm (overall, vertical)

Artwork can be installed horizontally or vertically

Edition of 5

LM34091

€50,000 EUR



TONY OURSLER

MUR(dusk)

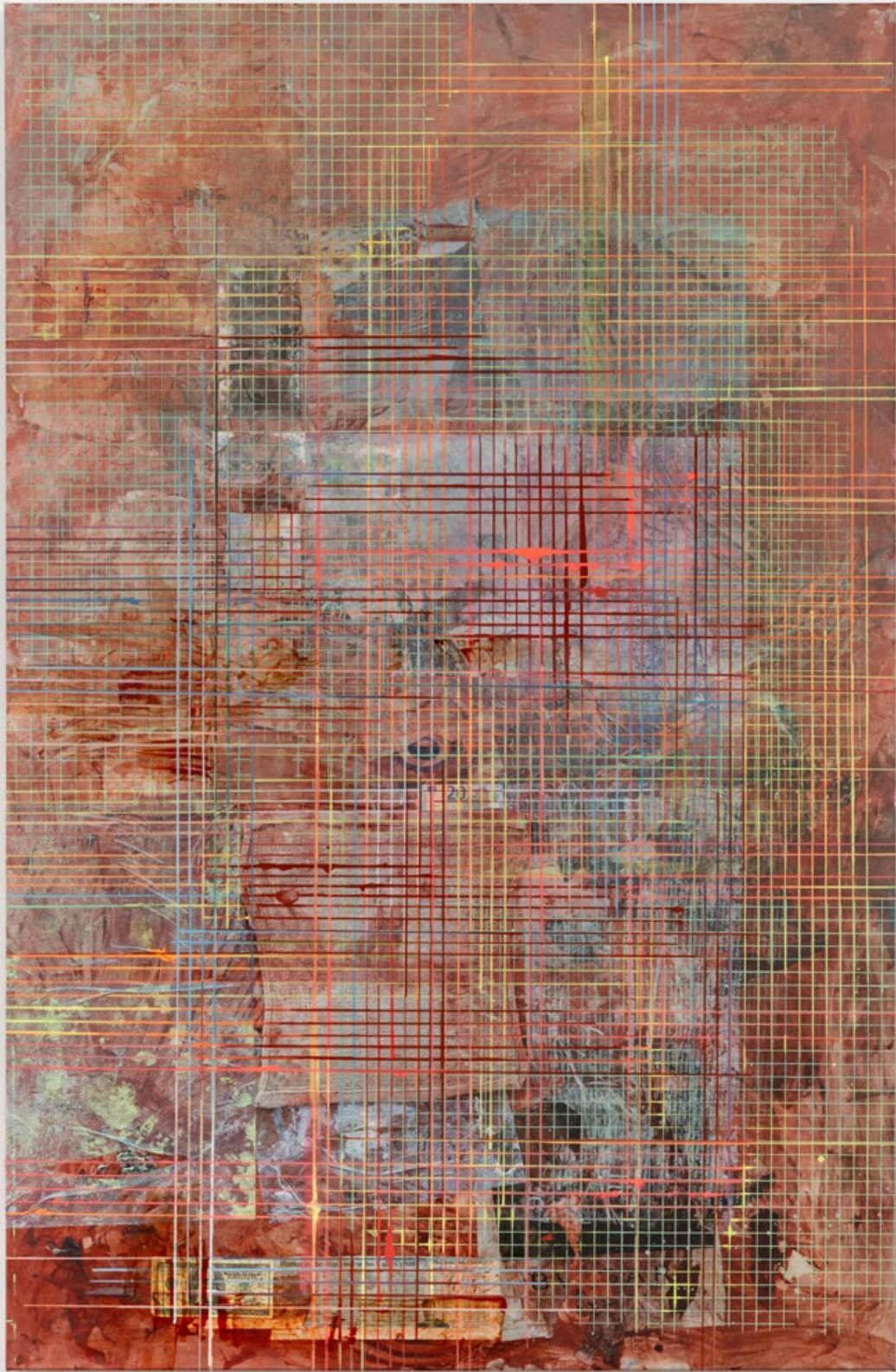
2022. Inkjet and acrylic on aluminum, wood, LCD digital screen media player, and drive

46 x 32.5 x 3.75 inches / 116.8 x 82.6 x 9.5 cm

duration: 00:26:26

LM34970

\$125,000 USD



MANDY EL-SAYEGH

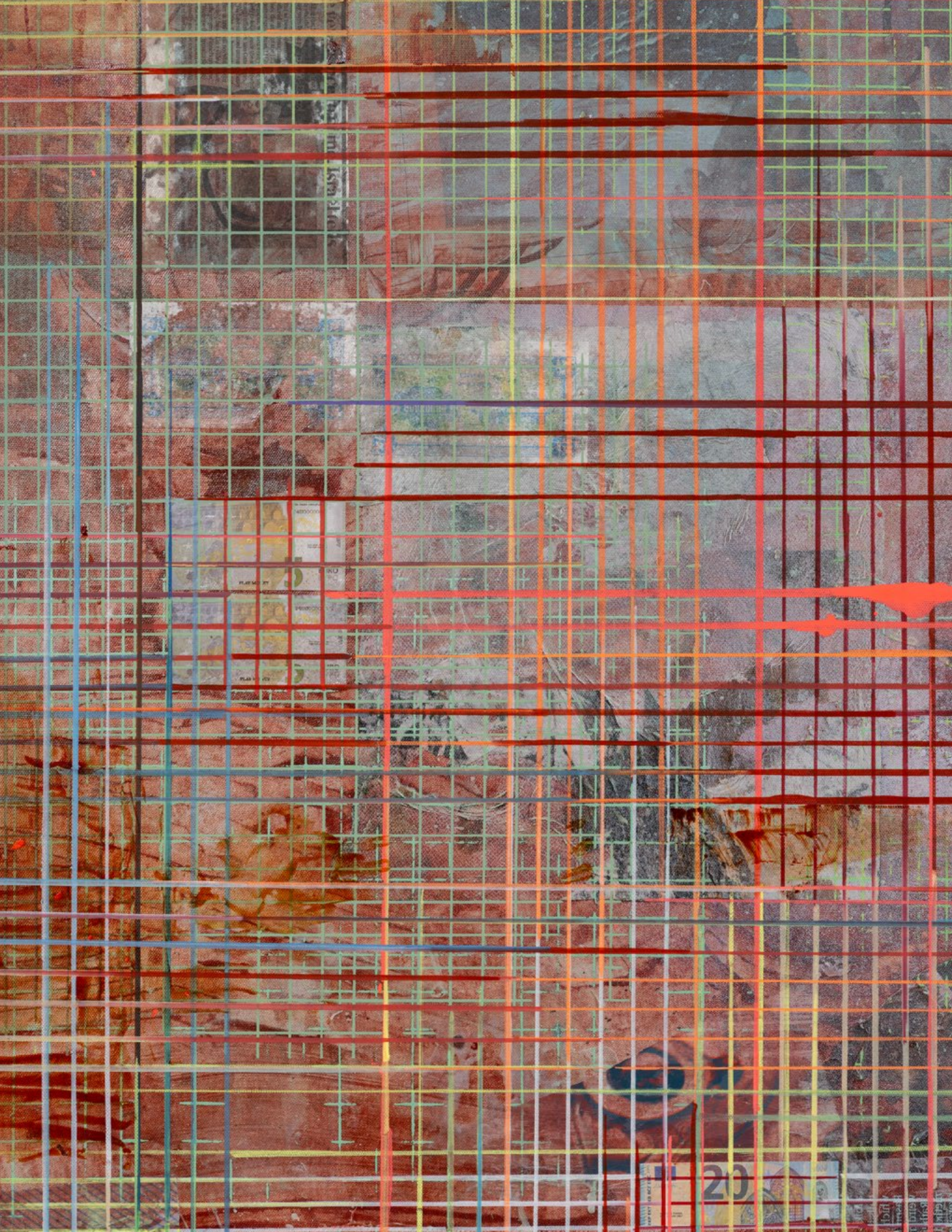
Net-Grid Study (True Stories)

2023. Oil and acrylic on UV print, with collaged and silkscreened elements

67.72 x 44.09 inches / 172 x 112 cm

LM36426

\$72,000 USD





MANDY EL-SAYEGH

Editorial Alias (Gulf, zero, united, charlie, charlie)

2023. Oil and acrylic on canvas with silkscreened and collaged elements

91.34 x 61.42 inches / 232 x 156 cm

LM36385

\$80,000 USD

DOLCE & GABBA



LIBRE

YVES SAINT LAURENT



MANDY EL-SAYEGH

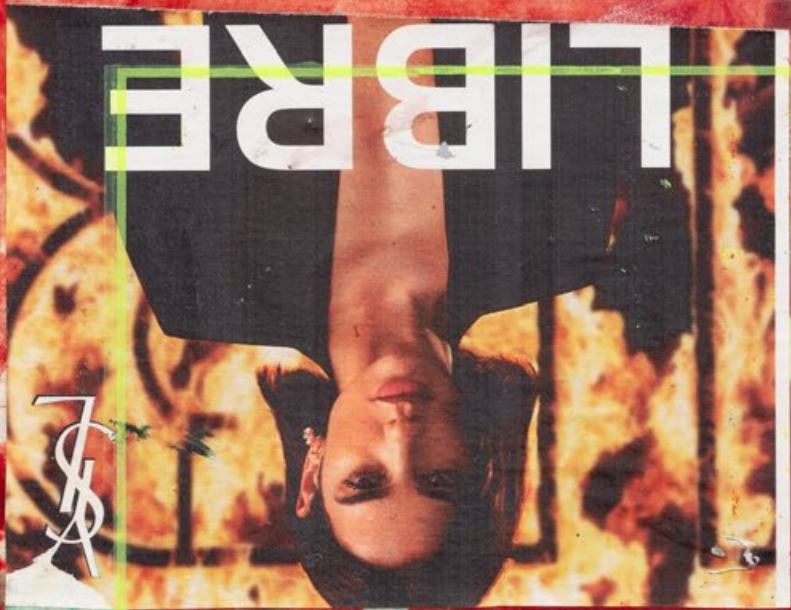
Piece Painting (free association, it's a no, imposters, weeping)

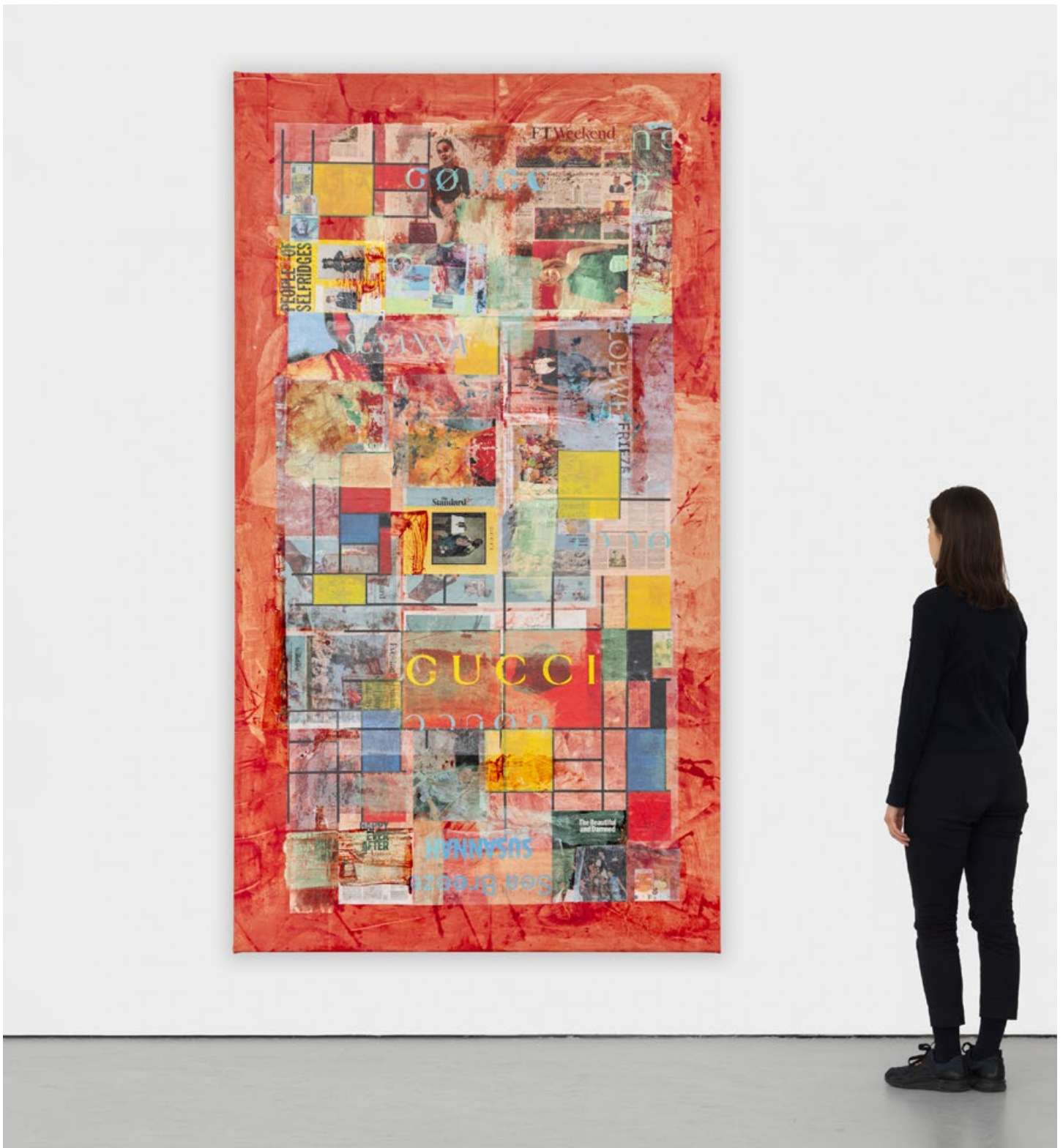
2023. Oil and acrylic on canvas with silkscreened and collaged elements

81.89 x 48.03 inches / 208 x 122 cm

LM36229

\$65,000 USD





MANDY EL-SAYEGH

Editorial Alias (Libre)

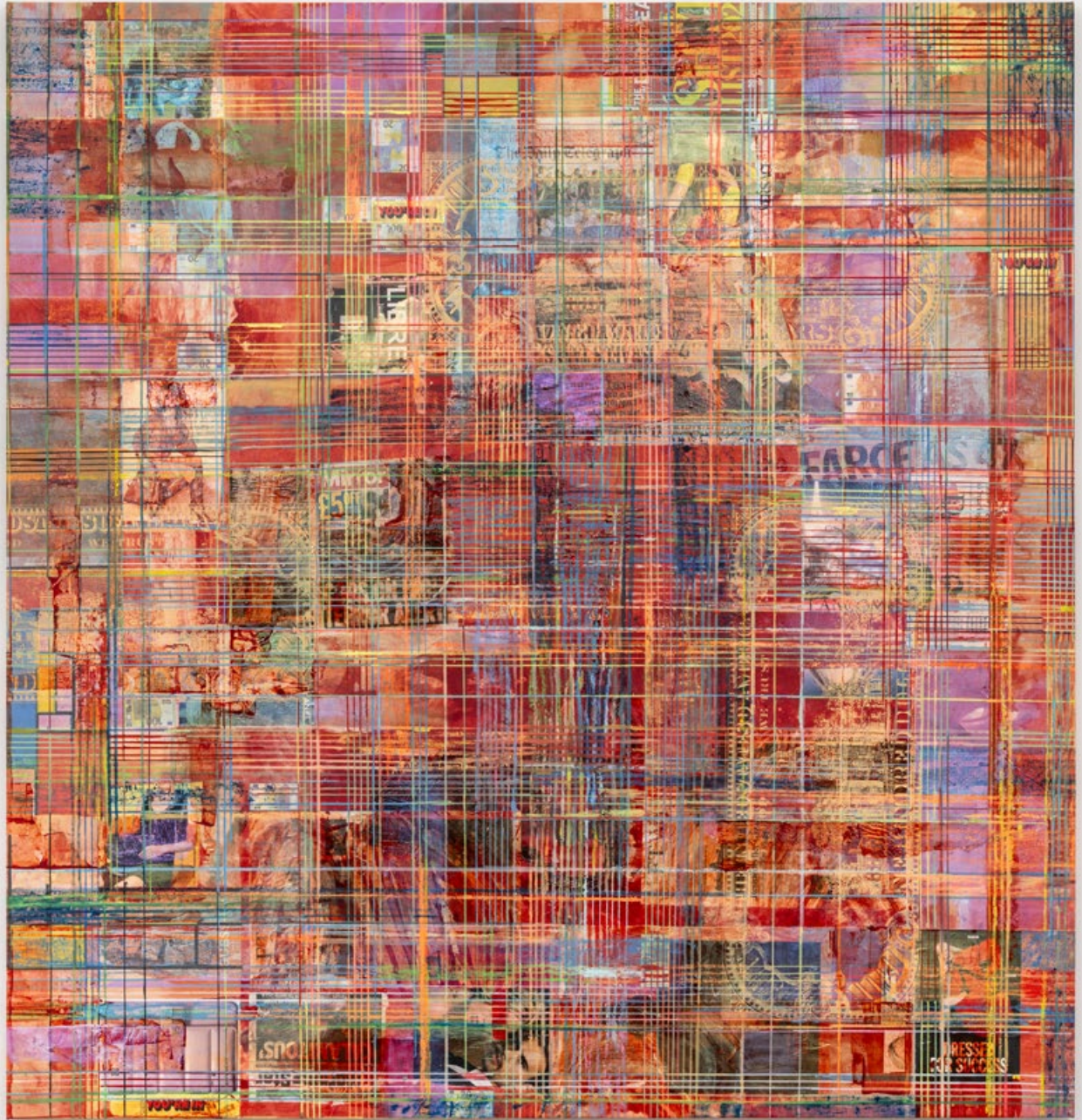
2023. Oil and acrylic on canvas with silkscreened and collaged elements

103.15 x 57.09 inches / 262 x 145 cm

LM36386

\$80,000 USD





MANDY EL-SAYEGH

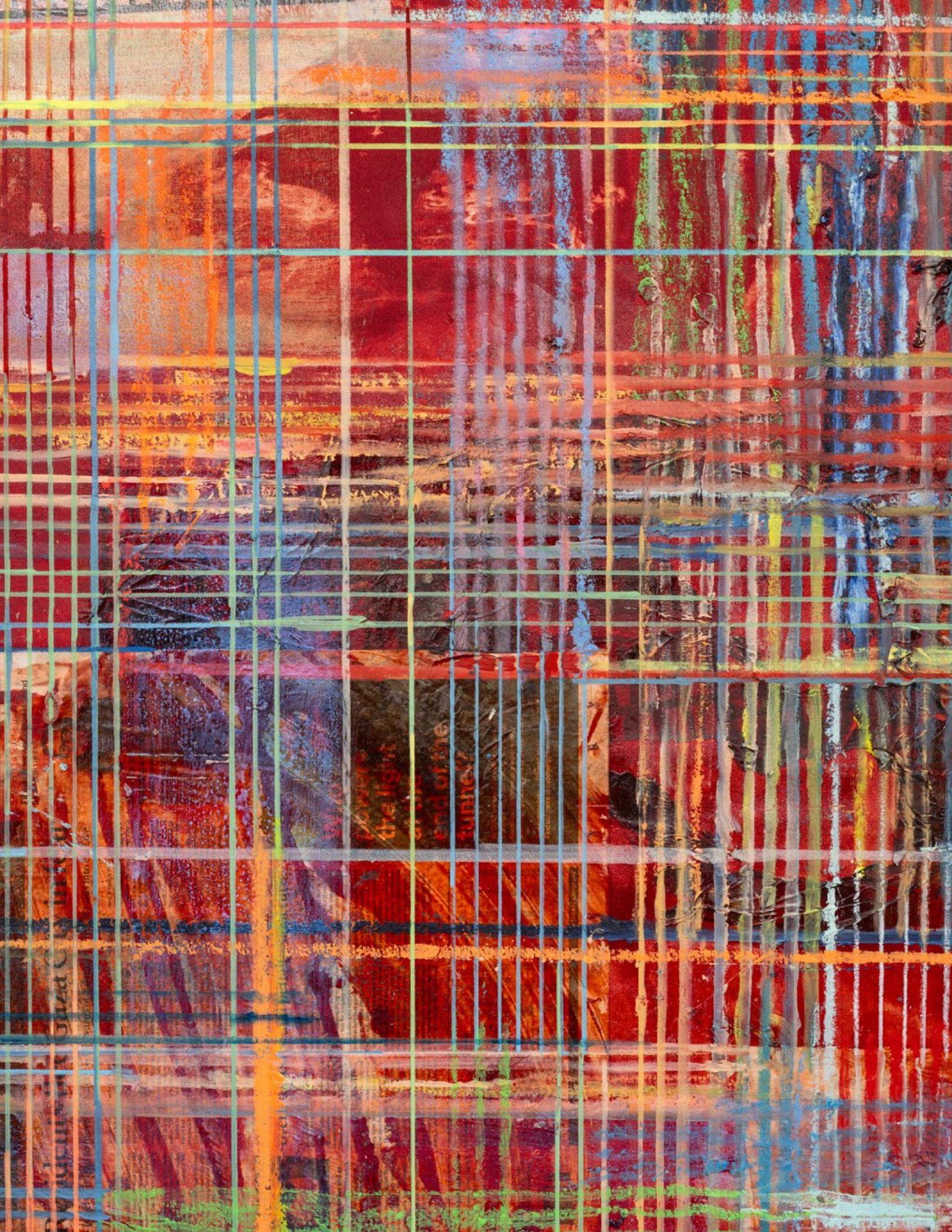
Net-Grid (Tabloid glossy 48)

2023. Oil and acrylic on canvas with collaged and silkscreened elements

92.52 x 88.58 inches / 235 x 225 cm

LM36465

\$115,000 USD



the light
end of the
tunnel?



TAMMY NGUYEN

Angels with Dice on Mount Purgatory

2023. Watercolor, vinyl paint, pastel, screen printing, rubber stamping, and metal leaf
on paper stretched over wood and gator board panel

90 x 65 inches / 228.6 x 165.1 cm

LM36395

\$100,000 USD





TAMMY NGUYEN

Angel with nails on Mount Purgatory

2023. Watercolor, vinyl paint, pastel, screen printing, rubber stamping, and metal leaf
on paper stretched over wood and gator board panel

65 x 90 inches / 165.1 x 228.6 cm

LM36396

\$100,000 USD



ABOUT THE GALLERY

Rachel Lehmann and David Maupin co-founded Lehmann Maupin in 1996 in New York. Since Inception, Lehmann Maupin has served as a leading contemporary art gallery with locations in the U.S., Europe, and Asia. For over 25 years, Lehmann Maupin has been instrumental in introducing international artists in new geographies and building long-lasting curatorial relationships. Known for championing diverse voices, the gallery's program proudly features artists whose work challenges notions of identity. and shapes international culture. Today, the gallery has locations in New York, Hong Kong, Seoul and London, as well as a team in mainland China. In the past year with growing opportunities in new markets, the gallery has opened seasonal spaces in Aspen, Palm Beach, Taipei, and Beijing.

NEW YORK

501 West 24th Street
New York, NY 10011
1 212 255 2923
newyork@lehmannmaupin.com

HONG KONG

852 2530 0025
hongkong@lehmannmaupin.com

SEOUL

213 Itaewon-ro, Yongsan-gu
Seoul, Korea 04349
82 2 725 0094
seoul@lehmannmaupin.com

LONDON

1 Cromwell Place
South Kensington, London SW7 2JE
44 20 8057 1880
london@lehmannmaupin.com