



LEHMANN MAUPIN

Art Basel  
Booth K15  
June 19–22, 2025  
Messe Basel

NEW YORK SEOUL LONDON

[lehmannmaupin.com](http://lehmannmaupin.com)

**Art Basel**

**Booth K15**

**June 19-22, 2025**

**Messe Basel, Messeplatz 10**

Lehmann Maupin returns to Art Basel with a presentation that foregrounds artists with concurrent and forthcoming solo museum exhibitions around the world this year—including the survey **Do Ho Suh: *Walk the House*** at the Tate Modern in London; **David Salle: *Under One Roof*** at Storage by Hyundai Card in Seoul; **Cecilia Vicuña's** forthcoming exhibition *Reverse Migration*, a Poetic Journey at the Irish Museum of Modern Art in Dublin; **Erwin Wurm: *How It Is*** at the Zuzeum Art Center in Riga, Latvia; and **Kader Attia: *A Descent into Paradise*** at CAAC Sevilla in Sevilla, Spain. The presentation will also spotlight a historically significant work by the late Swiss artist **Heidi Bucher**, whose estate Lehmann Maupin has represented since 2018.

Additional highlights include new and recent works by **McArthur Binion**, **Dominic Chambers**, **Billy Childish**, **Mandy El-Sayegh**, **Tracey Emin**, **Todd Gray**, **Kim Yun Shin**, **Liza Lou**, **Tammy Nguyen**, **Catherine Opie**, **Anna Park**, **Liu Wei**, and **Billie Zangewa**.

Notably, the presentation also includes several photographic wall works by **Robin Rhode**, whose new site-specific mural *Der Botanische Garten* will be on view at blu Sport- und Freizeitbad in Potsdam, Germany, prominently visible from DAS MINSK Kunsthaus in Potsdam, beginning June 2025.

**For additional images and video of the artworks, please [CLICK HERE](#).**

# Hernan Bas

As part of the fair's Unlimited sector at booth U16, Lehmann Maupin will present a monumental painting by Hernan Bas, titled *Conceptual artist #37 (he who exclusively paints portraits of conceptual artists who have never existed)* (2023)—the artist's largest work to date. In this recent work from the artist's *Conceptualists* series, which debuted in a solo exhibition at the Bass Museum of Art in Miami in late 2023, Bas reimagines absurdity and obsession as foundations of artistic practice, depicting an artist fixated on the portraiture of his fellow (albeit imaginary) conceptual artists.

**Unlimited**  
**Booth U16**





**Hernan Bas**

*Conceptual artist #37 (he who exclusively paints portraits of conceptual artists who have never existed), 2023*

Acrylic and pencil on linen

108 x 252 inches (274.3 x 640.1 cm)

LM37012

Please inquire

**Unlimited**



**In the Studio with Hernan Bas**  
Click [here](#) to watch film

# Do Ho Suh

A selection of works by Do Ho Suh, whose survey *The Genesis Exhibition: Do Ho Suh: Walk the House* is on view at the Tate Modern in London through October 19, will ground the presentation. Suh's long-running *Specimen* series comprises detailed fabric replicas of domestic objects from his past and present residences and studio spaces.

In 260-65, *Sungbook-dong, Sungbook-ku, Seoul* (2021), a key work from the series, colorful fabric doorknobs, electrical outlets, power strips, and more are precisely measured and modeled after their literal counterparts—objects that have been both habitually touched by the artist himself and with which others have a deep and unquestioning familiarity.







**Do Ho Suh**

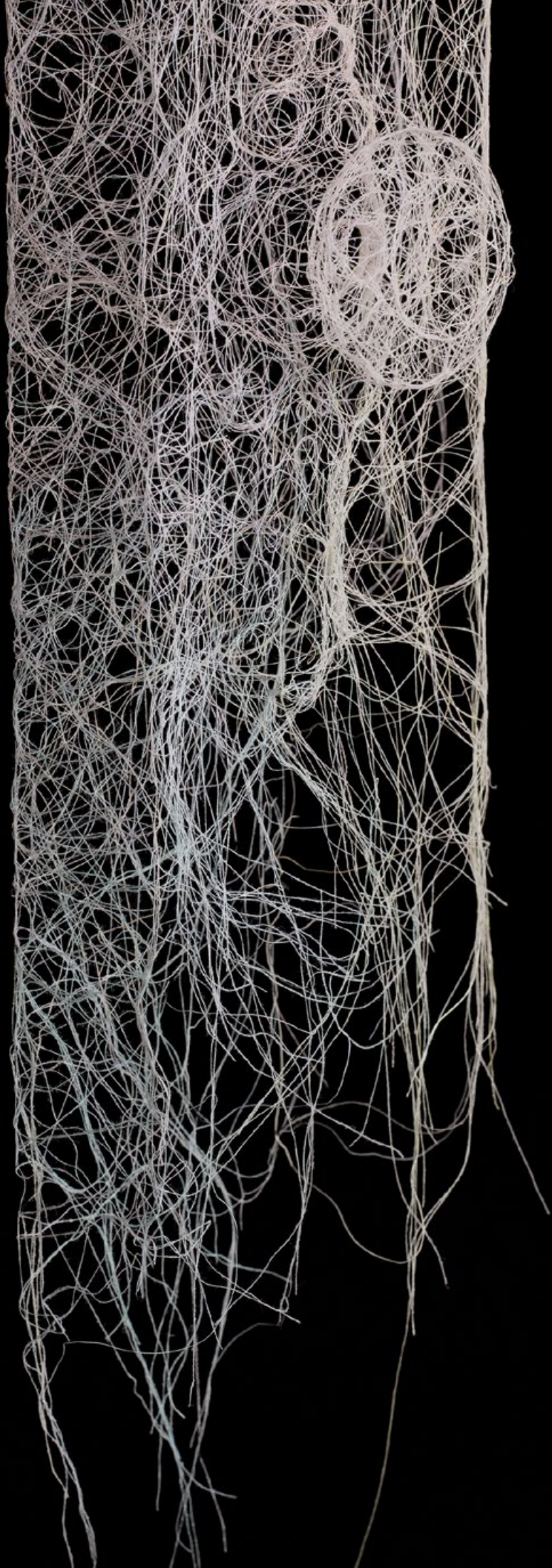
*ScaledBehaviour\_runOn(doorknob\_2.4.1)*, 2023

Thread and resin

53 x 32 1/2 x 8 1/8 inches (134.5 x 82.4 x 20.5 cm)

LM38046

\$75,000 USD

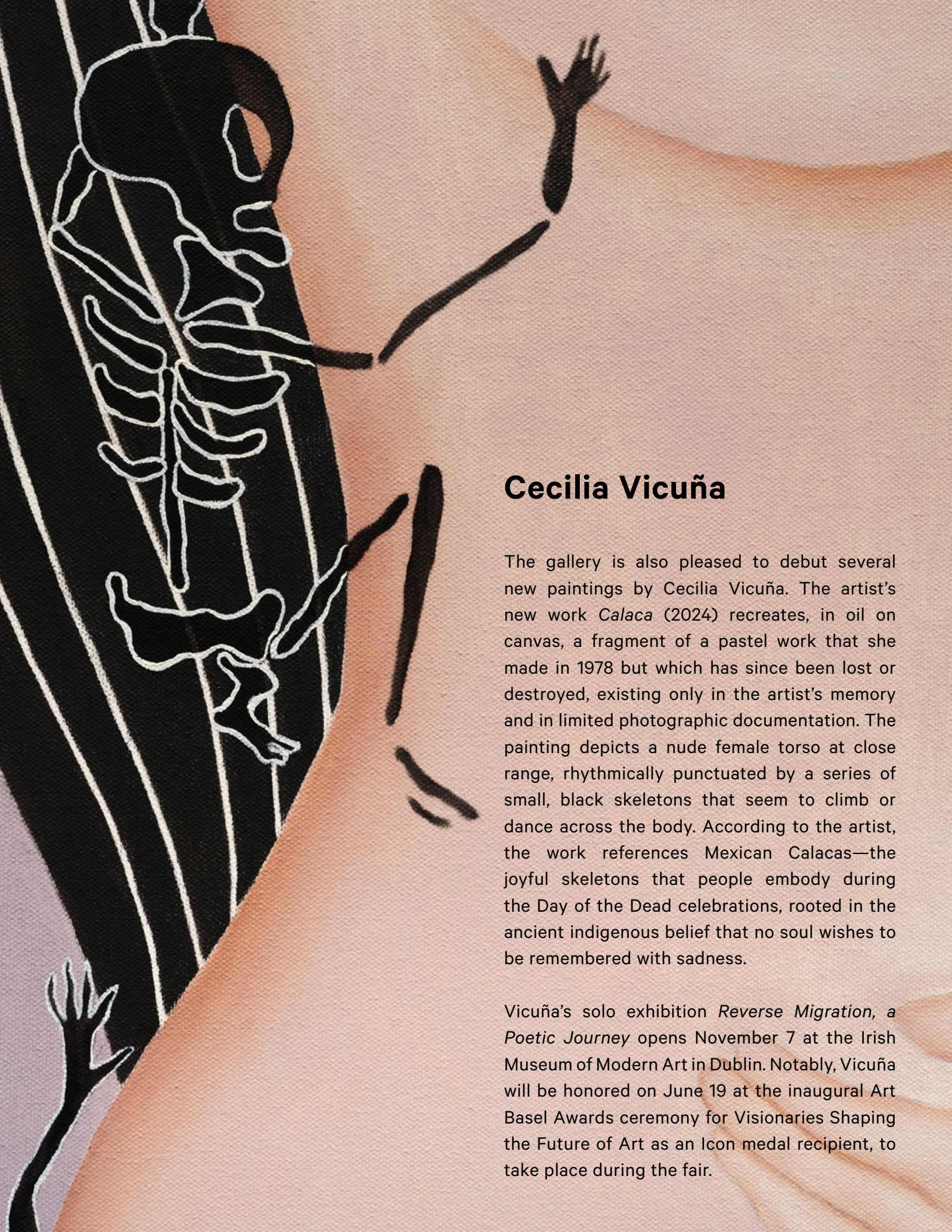


***Do Ho Suh: The Genesis Exhibition: Walk the House***

**Tate Modern, London, UK**

**May 1 – October 19, 2025**

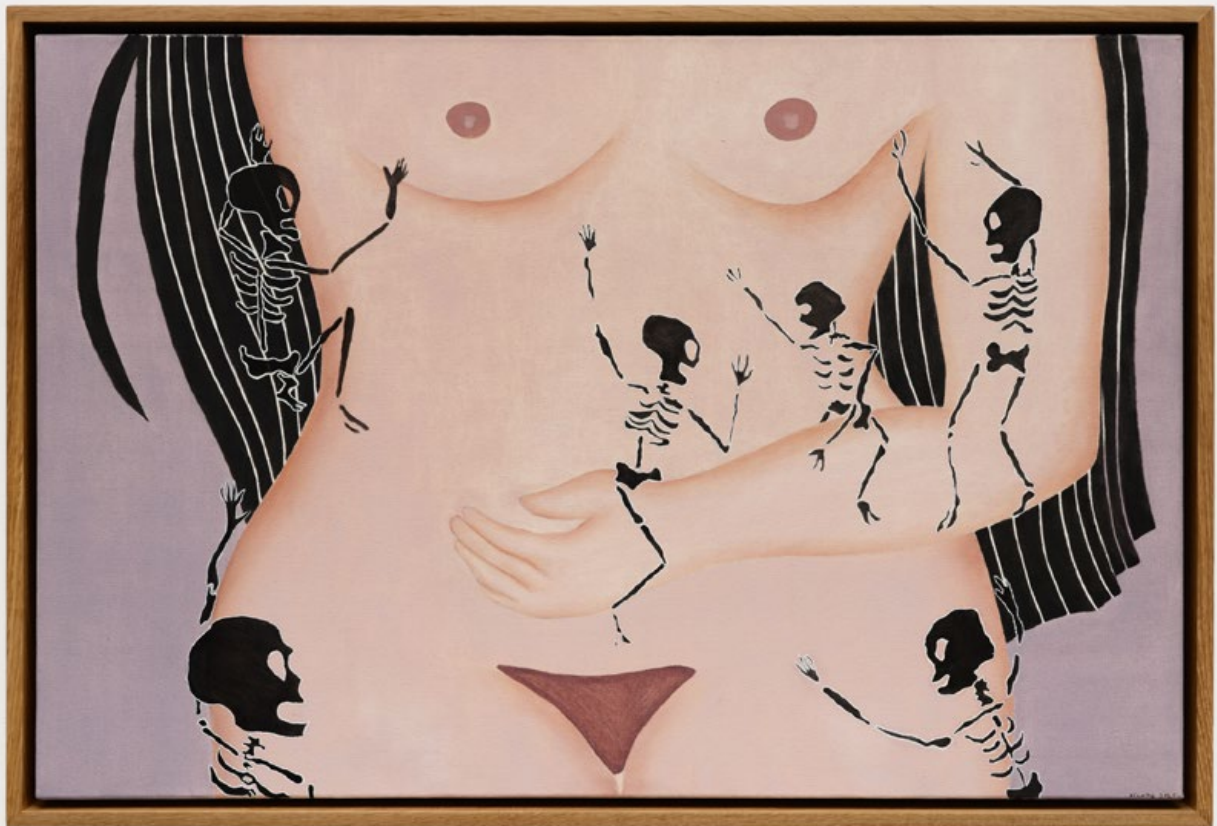




## Cecilia Vicuña

The gallery is also pleased to debut several new paintings by Cecilia Vicuña. The artist's new work *Calaca* (2024) recreates, in oil on canvas, a fragment of a pastel work that she made in 1978 but which has since been lost or destroyed, existing only in the artist's memory and in limited photographic documentation. The painting depicts a nude female torso at close range, rhythmically punctuated by a series of small, black skeletons that seem to climb or dance across the body. According to the artist, the work references Mexican Calacas—the joyful skeletons that people embody during the Day of the Dead celebrations, rooted in the ancient indigenous belief that no soul wishes to be remembered with sadness.

Vicuña's solo exhibition *Reverse Migration, a Poetic Journey* opens November 7 at the Irish Museum of Modern Art in Dublin. Notably, Vicuña will be honored on June 19 at the inaugural Art Basel Awards ceremony for Visionaries Shaping the Future of Art as an Icon medal recipient, to take place during the fair.



**Cecilia Vicuña**

*Calaca*, 2024

Oil on canvas

25 21/32 x 37 3/4 x 2 1/2 inches (65.151 x 95.885 x 6.35 cm)

LM38431

\$185,000 USD



**Cecilia Vicuña**

*Jaguar I*, 2025 (1978)

Oil on canvas

31 21/32 x 37 3/4 x 2 1/2 inches (80.391 x 95.885 x 6.35 cm)

LM38433

\$225,000 USD

# Erwin Wurm

Lehmann Maupin's presentation will also include new sculptures by Erwin Wurm. Wurm is best known for exploring the body as sculpture, using paradox as a tool for social critique; in *Psyche - As You Like It* and *Shadow* (both 2024), the body is at once absent and present. Wurm's solo exhibition *How It Is* is on view at the Zuzeum Art Center in Riga, Latvia through September 14.





**Erwin Wurm**

*Shadow*, 2024

Bronze, patina

86 5/8 x 18 1/2 x 19 11/16 inches (220 x 47 x 50 cm)

Edition of 3

LM37180.3

€260,000 EUR



**Erwin Wurm**

*Psyche - As You Like It, 2024*

Aluminium, paint, fabric (knitwear)

103 5/32 x 45 9/32 x 26 25/32 inches (262 x 115 x 68 cm)

LM37650

€300,000 EUR

# Kader Attia

A new sculpture by Attia employs mirrors to both distort and reinforce the viewer's perception, challenging their sense of identity and provoking a contemplation of self and space to emphasize the fluid boundaries of personal and cultural identity. In addition to his forthcoming solo

exhibition at CAAC Sevilla (opening June 26), Attia is currently an artist-in-residence at the Louvre Museum in Paris, where he has a studio on-site through June 2025. This fall, Lehmann Maupin will present a solo exhibition of new work by Attia in New York.



\*Detail image, professional images forthcoming

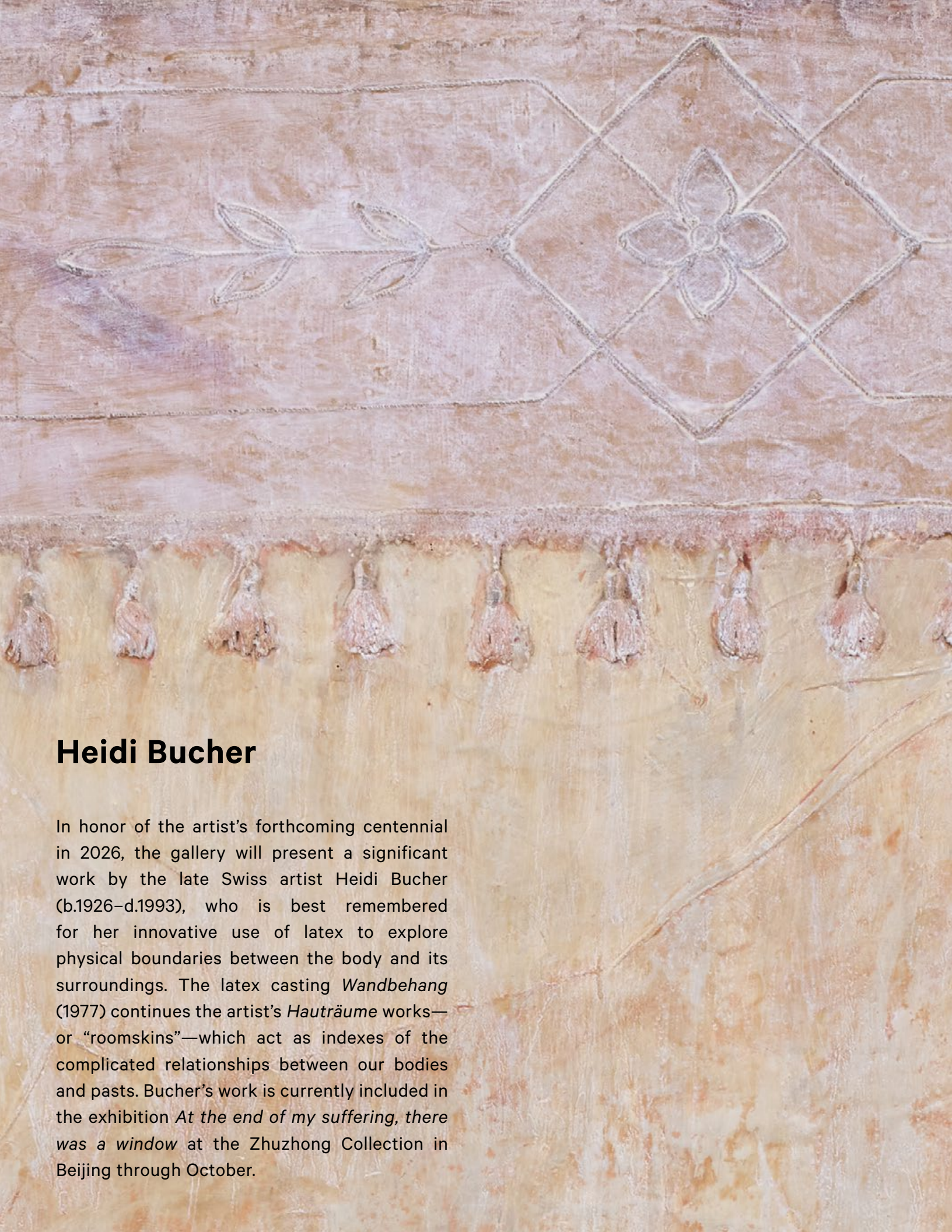
**Kader Attia**

*Untitled, 2025*

Mirror, wood, pigment, glue, metal

33 1/2 x 17 3/4 inches (85 x 45 cm)

LM38469



## Heidi Bucher

In honor of the artist's forthcoming centennial in 2026, the gallery will present a significant work by the late Swiss artist Heidi Bucher (b.1926–d.1993), who is best remembered for her innovative use of latex to explore physical boundaries between the body and its surroundings. The latex casting *Wandbehang* (1977) continues the artist's *Hauträume* works—or “roomskins”—which act as indexes of the complicated relationships between our bodies and pasts. Bucher's work is currently included in the exhibition *At the end of my suffering, there was a window* at the Zhuzhong Collection in Beijing through October.



**Heidi Bucher**

*Wandbehang*, 1977

Latex, cotton, and mother of pearl pigment

70 7/8 x 50 inches (180 x 127 cm)

LM35761

CHF 280,000



David Salle



**David Salle**

*Vamp 2, 2025*

Oil, acrylic, flashe, and charcoal on archival UV print on linen

64 5/8 x 96 3/4 x 2 3/4 inches (164 x 245.6 x 7 cm)

LM38399

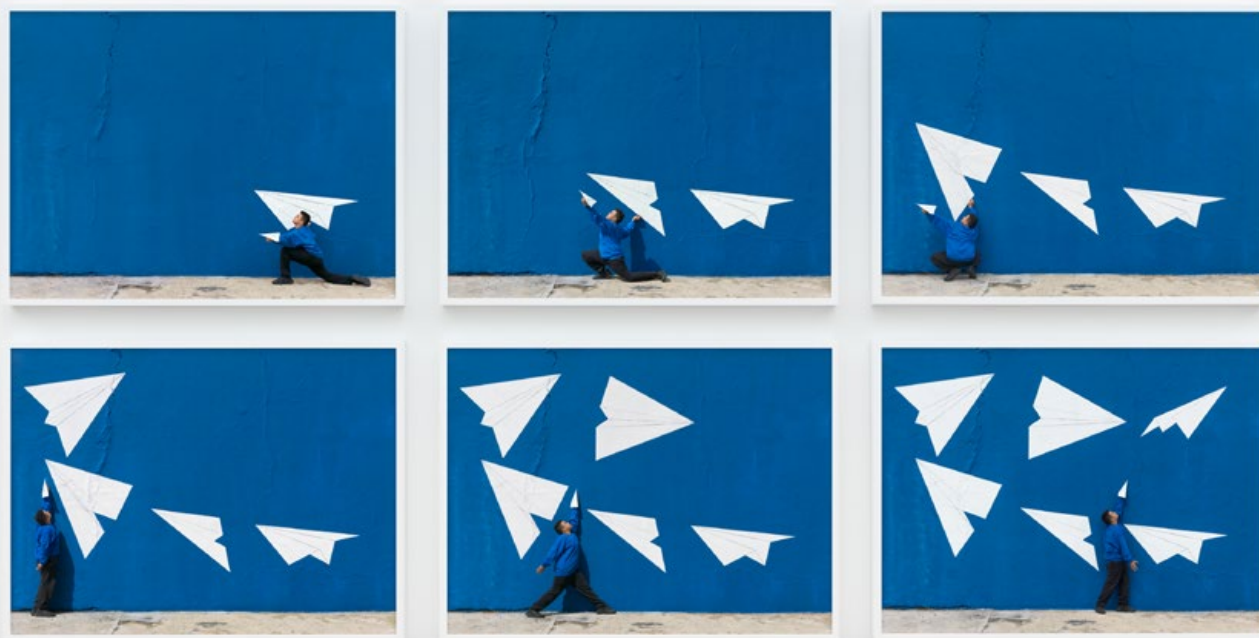
\$360,000 USD

**David Salle: *Under One Roof***  
**Storage by Hyundai Card, Seoul**  
**May 10 – September 7, 2025**



**Robin Rhode**





**Robin Rhode**

*Paper Planes*, 2022

C-print

6 panels, each: 20 3/4 x 28 5/8 x 1 1/2 inches (52.6 x 72.6 x 3.8 cm)

overall: 45 x 89 3/4 x 1 1/2 inches (114.2 x 227.8 x 3.8 cm)

Edition of 5

LM33900

€65,000 EUR



**Robin Rhode**

*Canna*, 2022

C-print

2 panels, each: 30 9/16 x 40 3/8 x 1 1/2 inches (77.6 x 102.6 x 3.81 cm)

overall: 30 9/16 x 82 3/4 x 1 1/2 inches (77.6 x 210.2 x 3.81 cm)

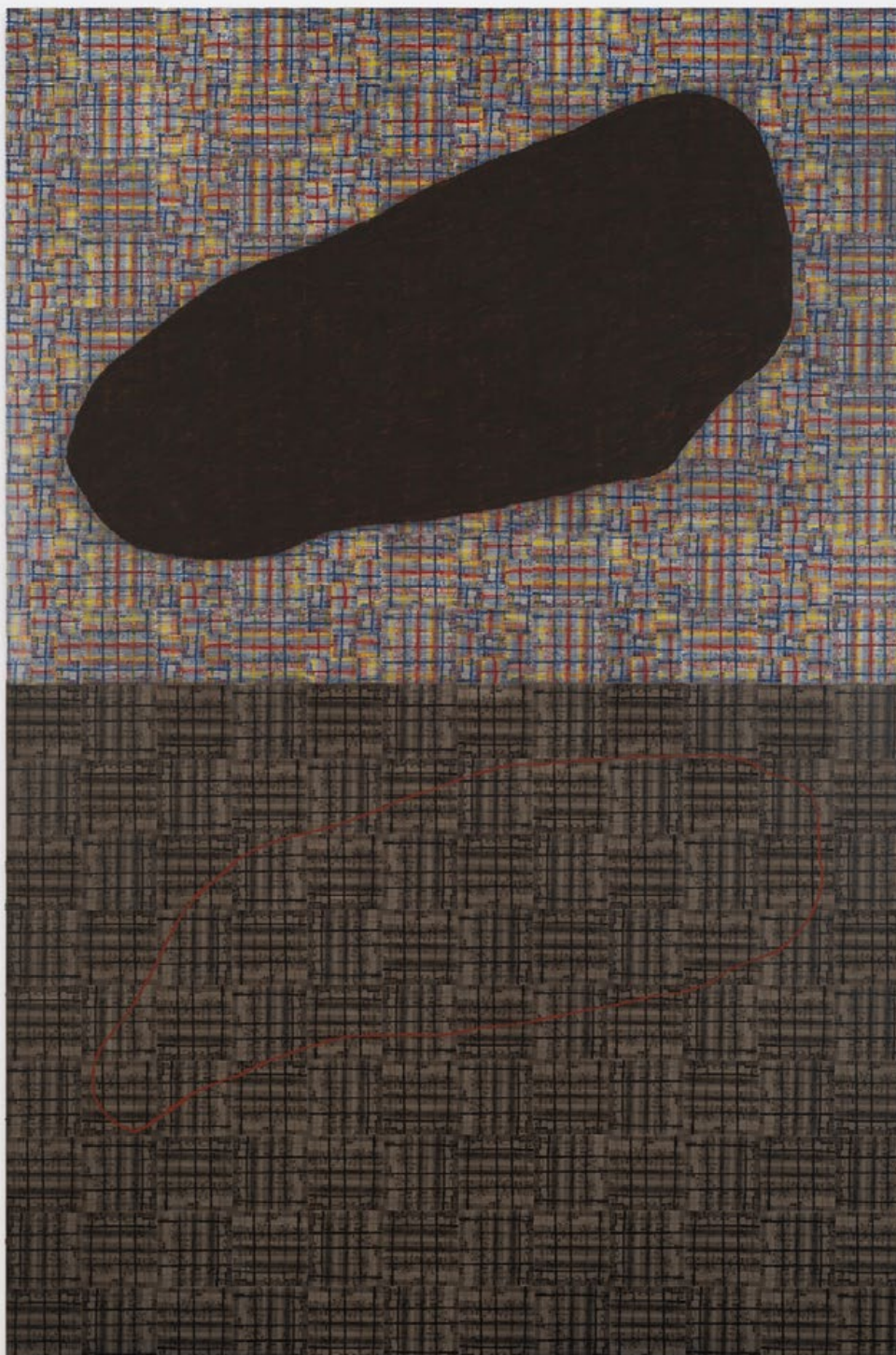
Edition of 5

LM34464

€50,000 EUR



# McArthur Binion



**McArthur Binion**

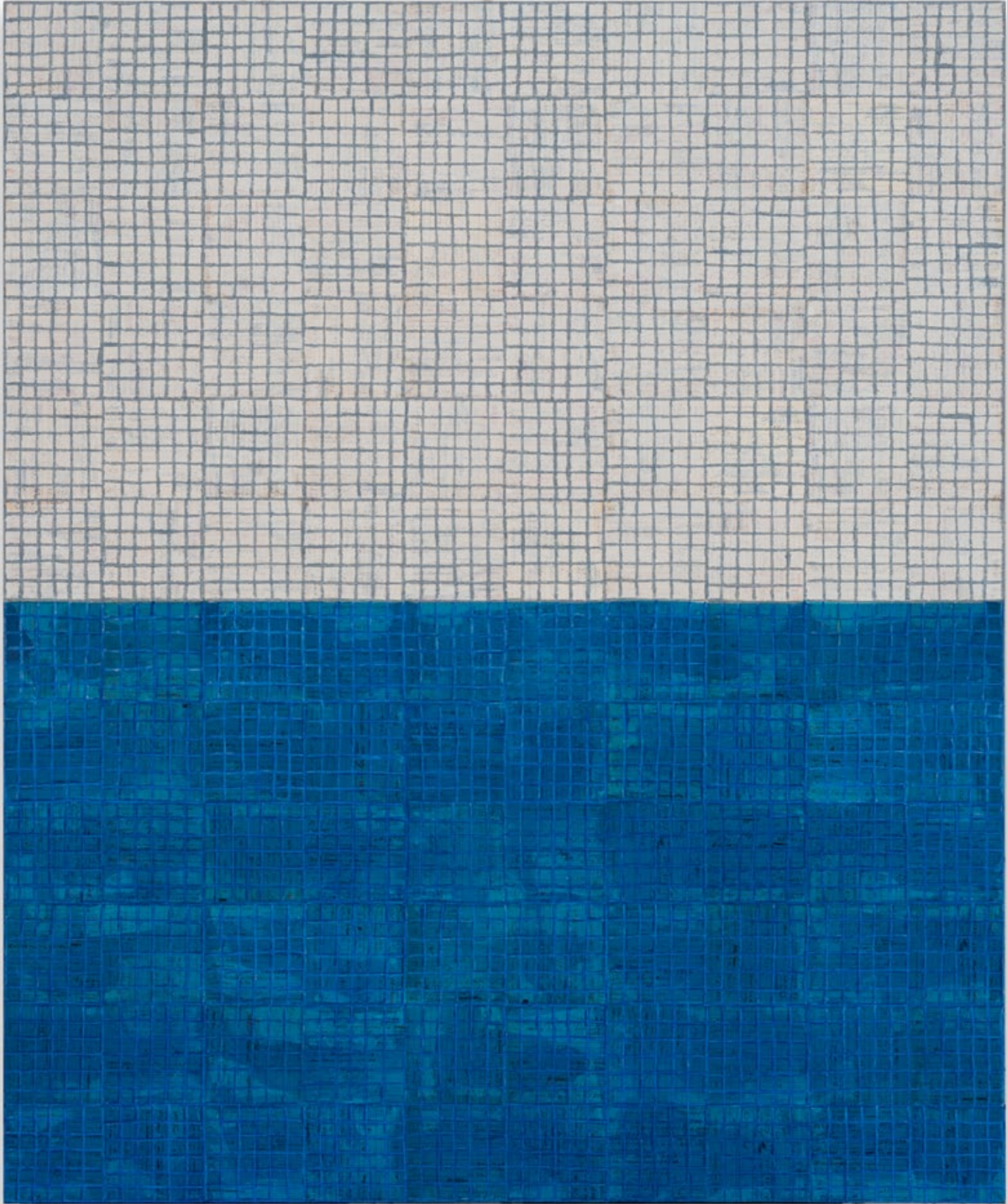
*Under:Ground*, 2025

Graphite, paint stick, and paper on board

72 x 48 inches (182.9 x 121.9 cm)

LM38357

\$250,000 USD



**McArthur Binion**

*Chicago:2024, 2024*

Ink, paint stick and paper on board

48 x 40 inches (121.9 x 101.6 cm)

LM38353

\$150,000 USD





**McArthur Binion**

*Haints*, 2014

Oil paint stick on board

46 x 64 x 2 inches (116.8 x 162.6 x 5.1 cm)

LM27573

\$250,000 USD



An abstract painting with a textured, impasto surface. The background is a mix of yellow, green, and brown tones. In the upper left, there is a large, red, tent-like structure with a pointed top. Below it, two dark, silhouetted figures are visible, one on the left and one on the right, appearing to be in motion. The overall style is expressive and painterly.

**Dominic Chambers**



**Dominic Chambers**

*Gloria (One Glorious Hour)*, 2025

Oil on linen

80 x 110 inches (203.2 x 279.4 cm)

LM38426

\$125,000 USD



**Dominic Chambers**

*Untitled (Site in Yellow)*, 2025

Oil on linen over panel

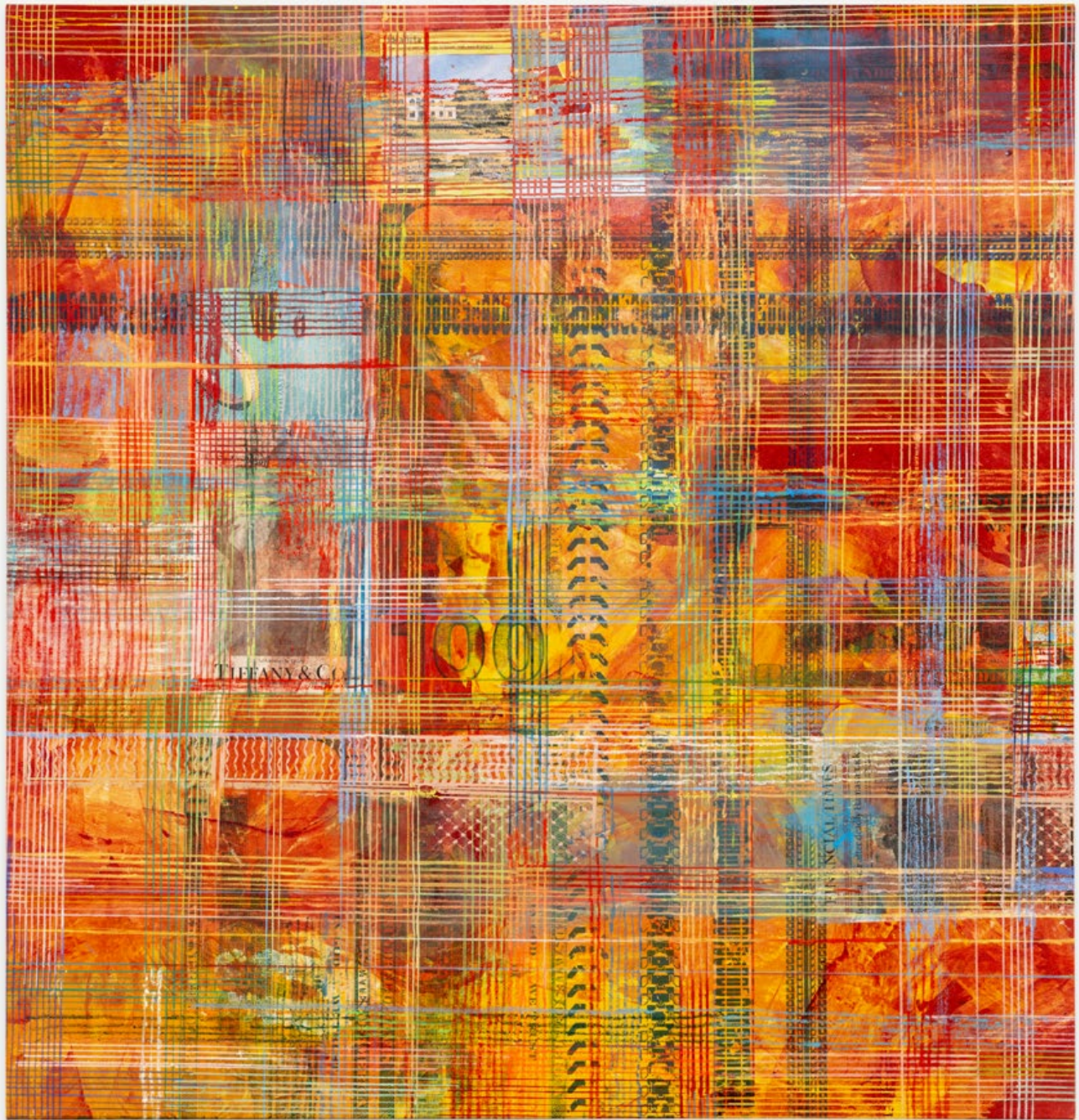
8 x 10 inches (20.3 x 25.4 cm)

LM38455

\$10,000 USD

An abstract artwork featuring a complex grid of horizontal and vertical lines in blue, green, and yellow. The background is a textured collage of warm colors like red, orange, and yellow, with some darker, more muted tones. In the center, the name 'Mandy El-Sayegh' is written in a clean, white, sans-serif font. The overall composition is layered and visually busy, with various patterns and textures visible throughout.

**Mandy El-Sayegh**



**Mandy El-Sayegh**

*Net-Grid (tread tessellation)*, 2024

Oil and acrylic on canvas with collaged and silkscreened elements

92 1/2 x 88 5/8 x 1 3/4 inches (235 x 225 x 4.5 cm)

LM37754

\$115,000 USD



**Todd Gray**



**Todd Gray**

*Assumptions about the nature of time, 2024*

Three UV pigment prints on Dibond, artist's frames

61 x 48 x 2 3/4 inches (154.9 x 121.9 x 7 cm)

LM37945

\$70,000 USD



**Liza Lou**



**Liza Lou**

*Ode*, 2024

Glass beads on stretched canvas with artist's frame

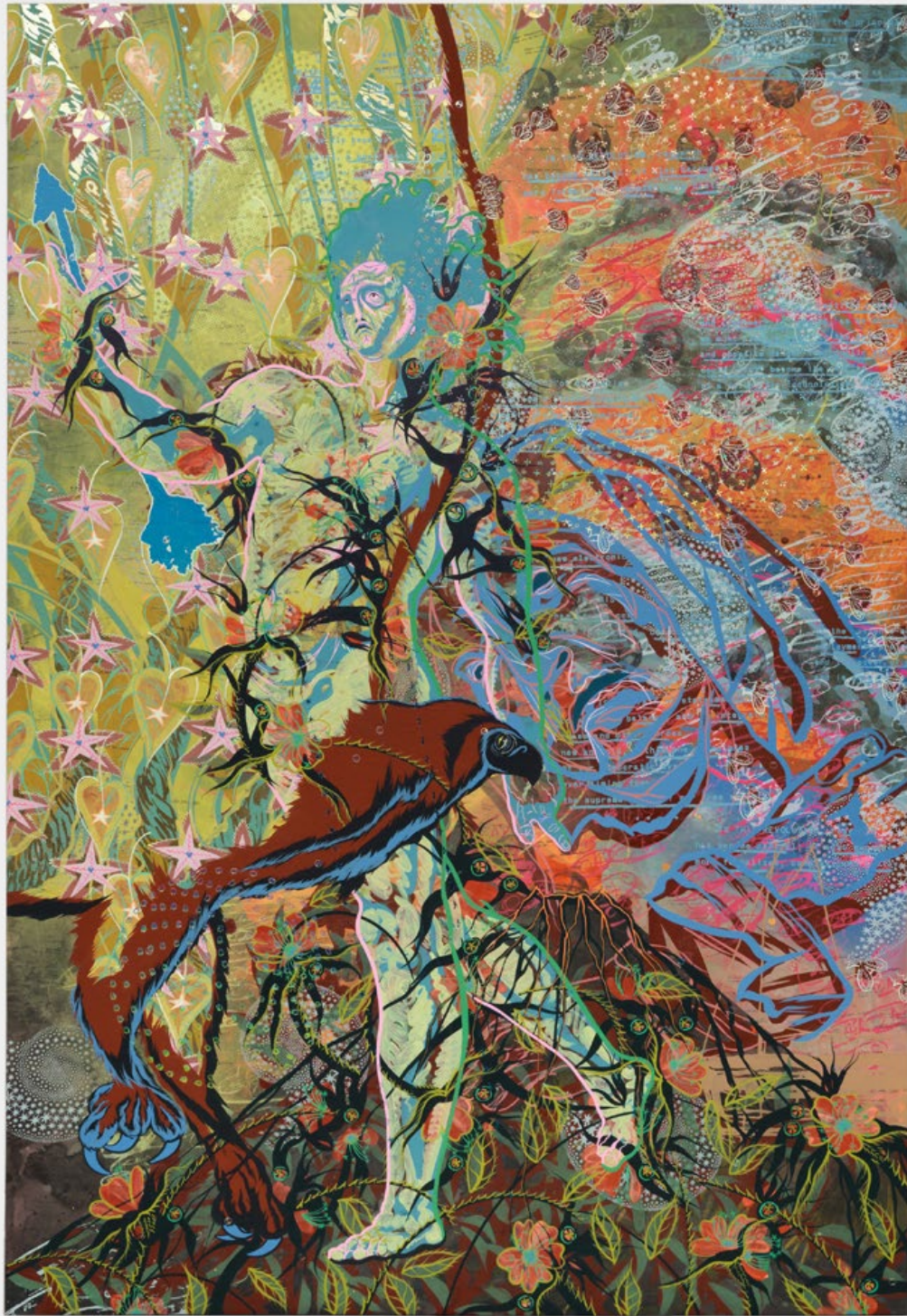
20 3/4 x 20 3/4 x 2 inches (52.7 x 52.7 x 5.1 cm)

LM37501

\$120,000 USD



Tammy Nguyen



**Tammy Nguyen**

*O Good Apollo*, 2025

Watercolor, vinyl paint, pastel, silkscreen printing, rubber stamping,  
hot stamping, and metal leaf on paper stretched over wood and gator  
board panel

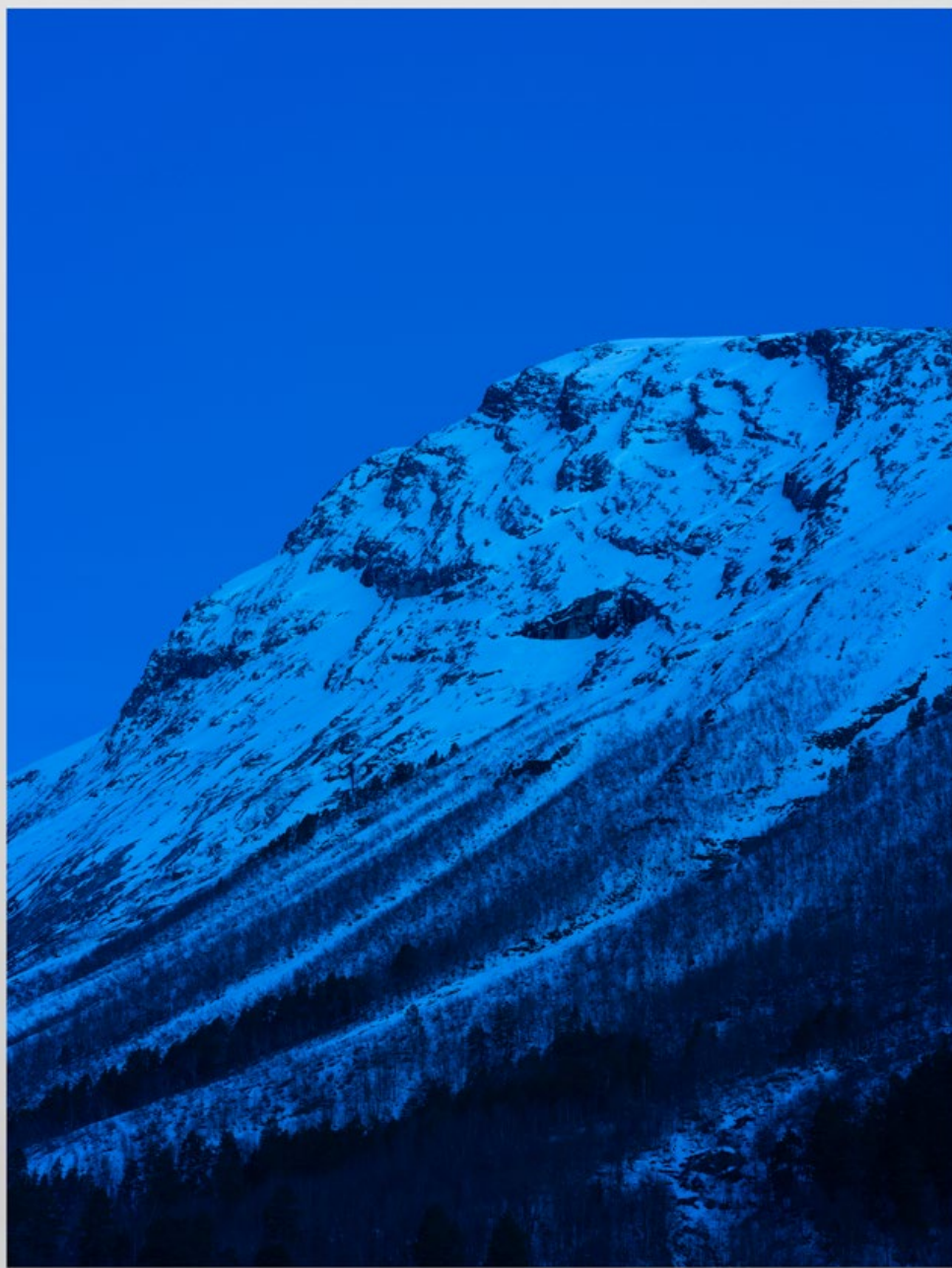
70 x 48 x 2 inches (177.8 x 121.9 x 5.1 cm)

LM38265

\$75,000 USD



**Catherine Opie**



**Catherine Opie**

*Untitled #9 (Norway Mountain), 2024*

Pigment print

78 1/2 x 59 1/2 x 2 inches (200.6 x 152.4 x 5.08 cm)

Edition of 5

LM37609.5

\$60,000 USD



**Photographer Catherine Opie Takes a Field Trip to Norway | Louisiana Channel**  
Click [here](#) to watch film

A black and white collage artwork. The top half features a close-up of a woman's face, looking slightly to the left. Her features are rendered with soft, painterly strokes. Below her face, the image transitions into a dense, abstract collage of various elements. There are large, dark, irregular shapes that resemble leaves or petals, some with intricate line work. The overall composition is layered and textured, with a mix of light and dark tones. The text 'Anna Park' is centered in a white, sans-serif font on a dark, horizontal band that cuts across the middle of the image.

# Anna Park



**Anna Park**

*Where We Left Things, 2025*

Charcoal, ink, paint, on paper mounted on wood panel

82 x 112 x 5 3/4 inches (208.3 x 284.5 x 14.6 cm)

LM38407

Please inquire



Kim Yun Shin



**Kim Yun Shin**

*Add Two Add One, Divide Two Divide One 1989-216, 1989*

Onyx

20 1/2 x 25 5/8 x 11 3/4 inches (52 x 65 x 30 cm)

LM38172

\$200,000 USD



**Kim Yun Shin**

*Song of My Soul 2009-No.236, 2009*

Oil on canvas

70 7/8 x 59 inches (180 x 150 cm)

LM38255

\$140,000 USD



**Kim Yun Shin**

*From Me To You*, 2022

Acrylic on canvas

35 1/2 x 35 1/2 inches (90 x 90 cm)

LM37727

\$60,000 USD



**Kim Yun Shin**

*Add Two Add One, Divide Two Divide One* 2020-6, 2020

Quebracho wood

70 7/8 x 17 3/8 x 16 7/8 inches (180 x 44 x 43 cm)

LM38211

\$140,000 USD



**Kim Yun Shin**

*Song of My Soul* 2012-44, 2012

Oil on canvas

35 5/8 x 59 x 1 inches (90.5 x 150 x 2.5 cm)

LM38443

\$80,000 USD

The artwork is a vibrant, abstract composition. A large, light blue circle dominates the upper half of the frame. The background is a light blue field filled with a dense pattern of small, dark blue polka dots. Overlaid on this background are several irregular, torn-edge shapes in various colors: red, yellow, orange, green, and dark red. Some of these shapes are also filled with the same polka dot pattern. In the upper right corner, there are several elongated, vertical shapes with a pattern of thin, dark brown vertical lines. The overall effect is a layered, collage-like aesthetic with a strong sense of movement and color contrast.

Liu Wei



**Liu Wei**

*Yuexia 2, 2024*

Oil on canvas

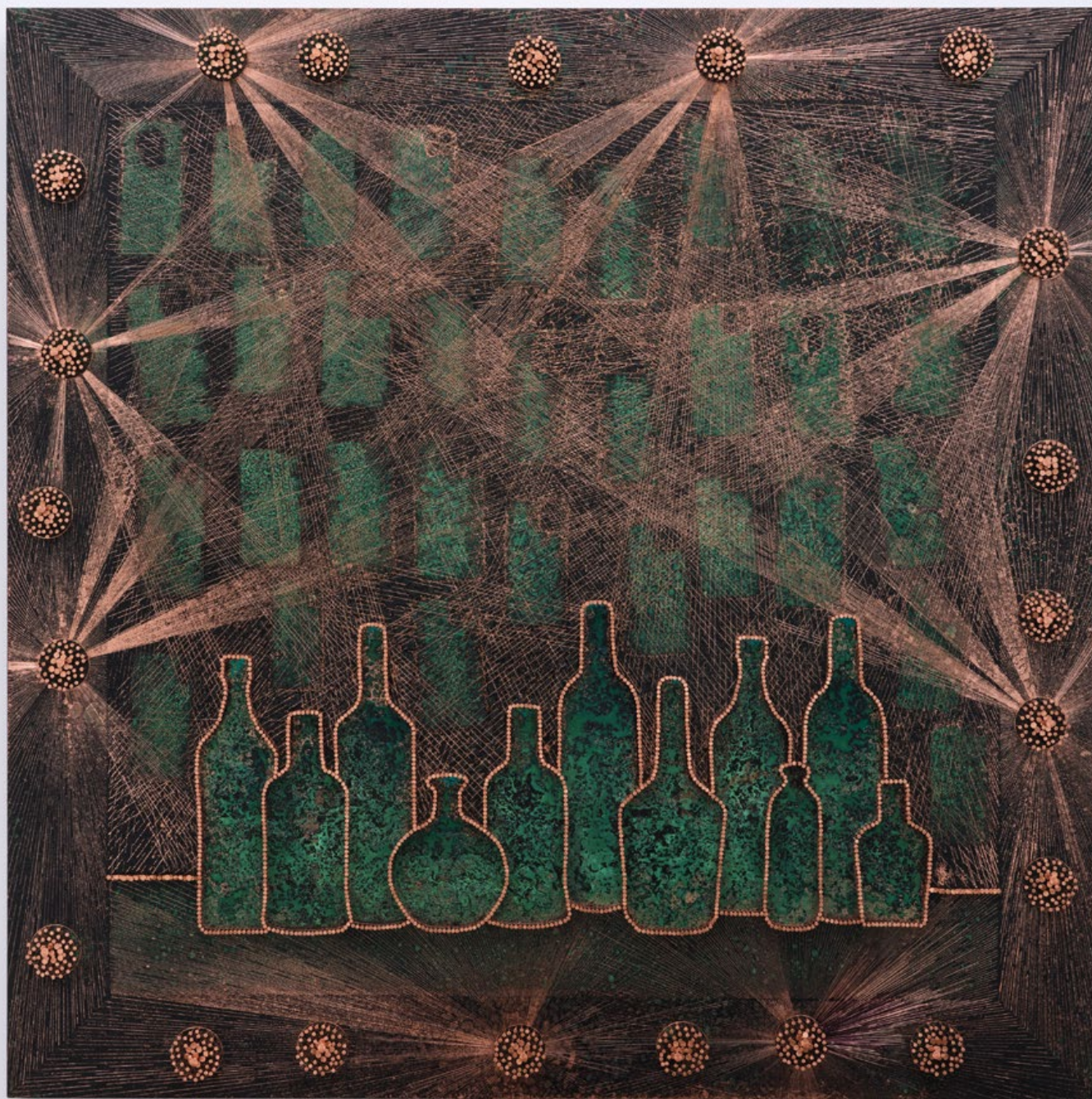
82 5/8 x 82 5/8 inches (210 X 210 cm)

LM36941

\$300,000 USD



**Nari Ward**



**Nari Ward**

*Still Livin' Followers, 2024*

Copper sheet, copper nails, and darkening patina

48 x 48 x 3 inches (121.9 x 121.9 x 7.6 cm)

LM38012

\$250,000 USD



**Nari Ward**

*Still Livin' Forever*, 2024

Copper sheet, copper nails, and darkening patina

22 x 22 x 3 inches (55.9 x 55.9 x 7.6 cm)

LM37320

\$90,000 USD

An abstract textile artwork featuring a central, large, rectangular piece of brown fabric with a textured, slightly mottled appearance. This central piece is surrounded by various strips and patches of green and beige fabric. The green strips are some solid and some with dark green patterns, and they are arranged in a way that suggests a stylized, perhaps floral or leaf-like, design. The beige fabric is also present in patches, particularly on the left side. The overall composition is layered and textured, with visible stitching and frayed edges on some of the fabric pieces.

**Bilie Zangewa**



**Billie Zangewa**

*Splendour in the Plants*, 2024

Hand-stitched silk collage

54 1/2 x 42 1/4 inches (138.4 x 107.3 cm)

LM37592

\$150,000 USD



Tracey Emin



**Tracey Emin**

*The End of Me, 2012*

Embroidered cotton

70 1/8 x 63 3/4 inches (178 x 161.9 cm)

LM37178

Please inquire

## Lehmann Maupin

Rachel Lehmann and David Maupin co-founded Lehmann Maupin in 1996 in New York. Since inception, Lehmann Maupin has served as a leading contemporary art gallery with locations in the U.S., Europe, and Asia. For over 25 years, Lehmann Maupin has been instrumental in introducing international artists in new geographies and building long-lasting curatorial relationships. Known for championing diverse voices, the gallery's program proudly features artists whose work challenges notions of identity and shapes international culture. Today, the gallery has permanent locations in New York, Seoul, and London, as well as team members throughout Asia and Europe.

## Locations

### New York

501 West 24th Street  
New York, NY 10011  
+1 212 255 2923  
[newyork@lehmannmaupin.com](mailto:newyork@lehmannmaupin.com)

### Seoul

213 Itaewon-ro, Yongsan-gu  
Seoul, Korea 04349  
+82 2 725 0094  
[seoul@lehmannmaupin.com](mailto:seoul@lehmannmaupin.com)

### London

No.9 Cork Street  
London, W1S 3LL  
[london@lehmannmaupin.com](mailto:london@lehmannmaupin.com)

## On View & Upcoming Exhibitions

### Kim Yun Shin

*Divide Two Divide One*  
April 3 – May 31, 2025  
New York

### Hernan Bas

*The space between needful & needless*  
April 10 – May 31, 2025  
Seoul

### Tammy Nguyen

*A Comedy for Mortals: Paradiso*  
June 5 – August 15, 2025  
New York

### Arcmanoro Niles

June 12 - August 15, 2025  
New York

## Museum Exhibitions

### OSGEMEOS

*Endless Story*  
September 29, 2024 – August 3, 2025  
Hirshhorn Museum & Sculpture Garden, Washington, D.C.

### Calida Rawles

*Away with the Tides*  
March 19 – September 7, 2025  
Memphis Brooks Museum of Art, Memphis, TN

### David Salle

*Under One Roof*  
May 10 – September 7, 2025  
Storage by Hyundai Card, Seoul

### Do Ho Suh

*The Genesis Exhibition: Walk the House*  
May 1 – October 19, 2025  
Tate Modern, London, UK

### Cecilia Vicuña

*Quipu installation*  
August 29, 2024 – August 10, 2025  
Pérez Art Museum Miami, Miami, FL

### Billie Zangewa

*Breeding Ground*  
February 11 – September 11, 2025  
Norval Foundation, Cape Town, South Africa