



James
Cohan

Art Basel

BASEL, SWITZERLAND | BOOTH R20 | JUNE 18-22, 2025

48 | 52 Walker Street
New York, NY 10013
291 Grand Street
New York, NY 10002



FRED TOMASELLI
Plum Tree, 2025
Acrylic, photo collage and resin on wood panel
60 x 60 in.
152.4 x 152.4 cm
\$ 575,000

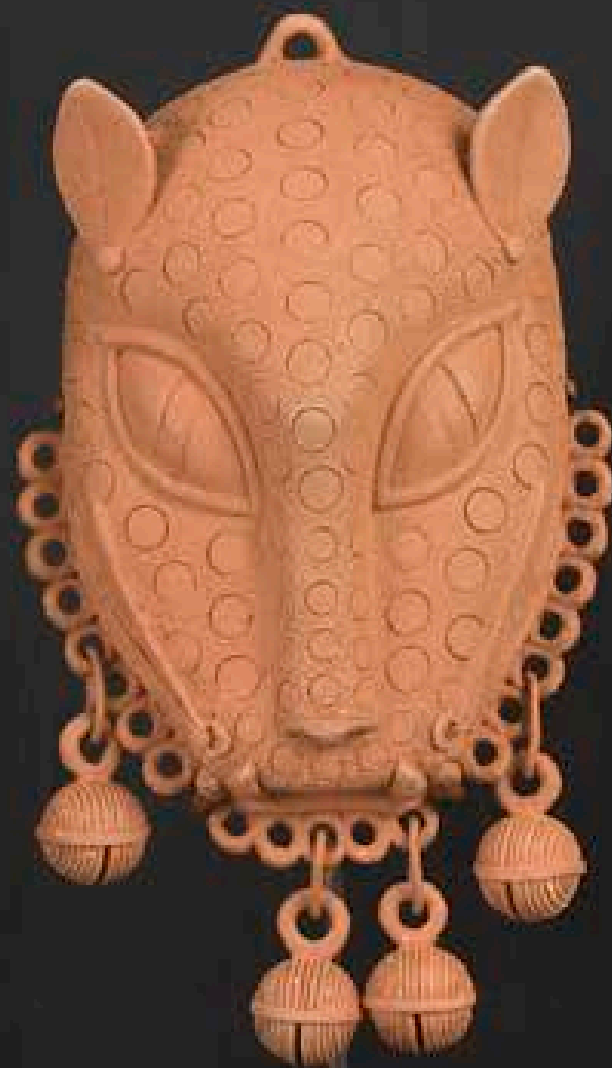
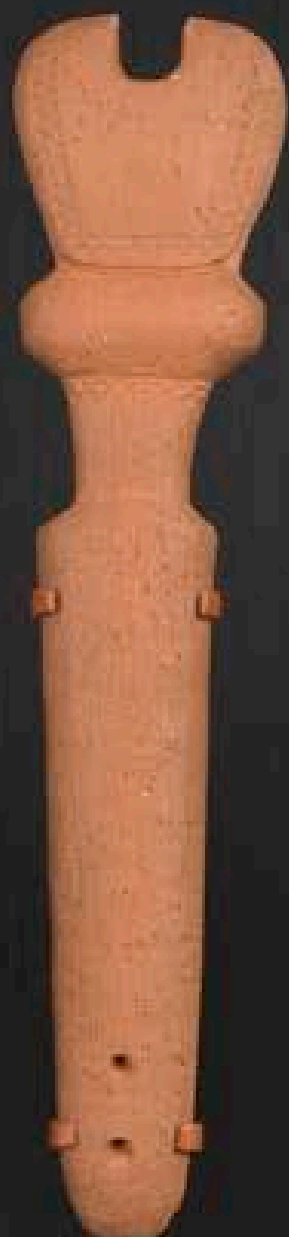
[VIEW ARTWORK DETAILS](#)





YINKA SHONIBARE
Archive of Lost Memories II, 2025
11 clay objects, hand-painted bust, and wooden shelves
54 1/8 x 45 3/8 x 13 3/4 in.
137.4 x 115.2 x 35 cm
£ 225,000

[VIEW ARTWORK DETAILS](#)





JOSIAH MCELHENY
From the Library of Doubles VI, 2025
Hand-blown, cut, polished, and mirrored glass; low-iron mirror and
two-way mirror, electric light; walnut frame
24 7/8 x 67 x 22 1/2 in.
63.2 x 170.2 x 57.1 cm
\$ 250,000

[VIEW ARTWORK DETAILS](#)





ALEXANDRE DA CUNHA
Vital (Dome), 2025
Shovel handles, voile
80 3/4 x 80 3/4 x 2 3/8 in.
205 x 205 x 6 cm
\$ 80,000

[VIEW ARTWORK DETAILS](#)





ALEXANDRE DA CUNHA

Vital (Vista), 2025

Shovel handles, t-shirts, cleaning cloth, blanket, dishcloths, fabric cut outs

31 1/8 x 132 5/8 x 2 3/8 in.

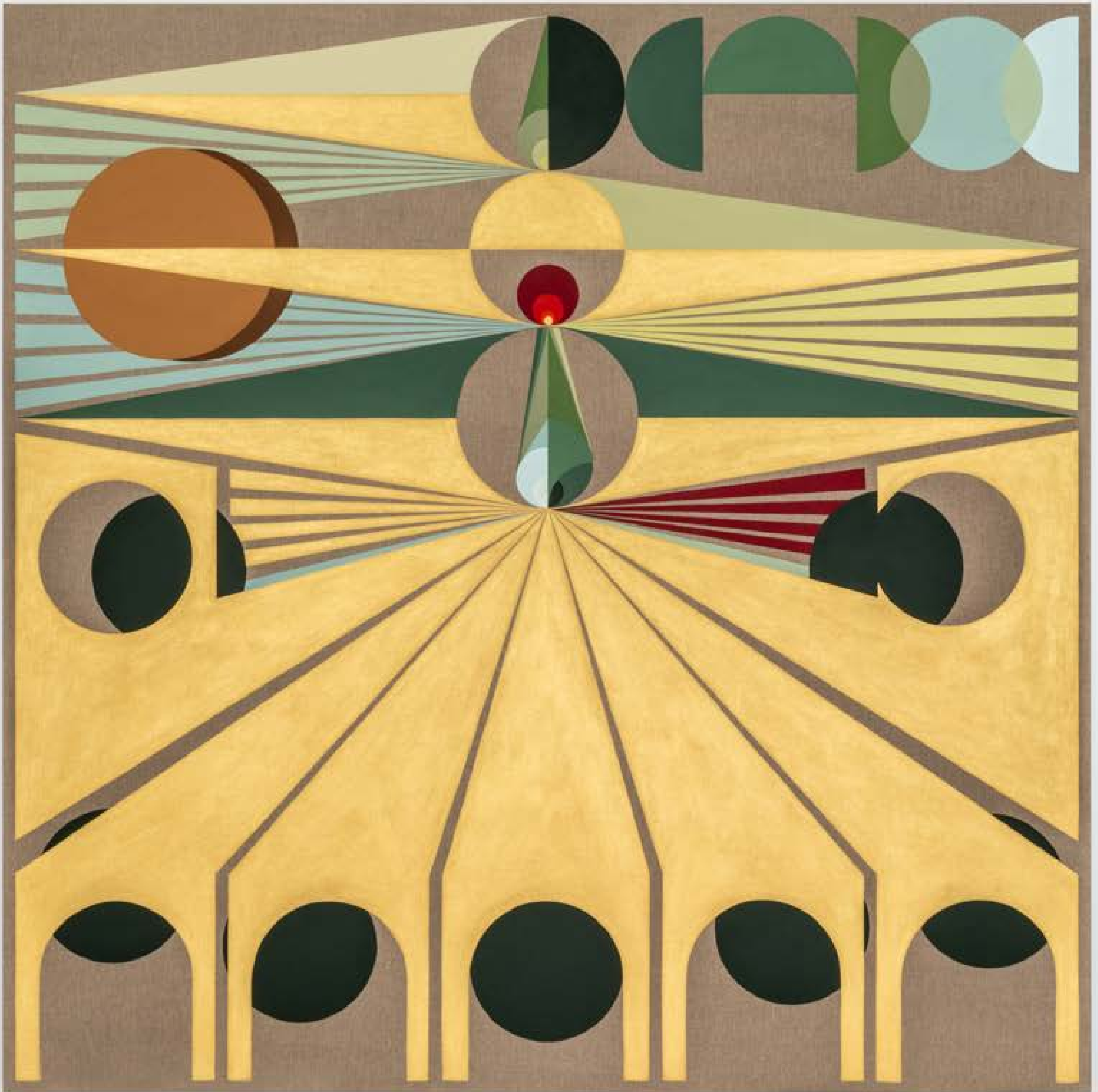
79.1 x 336.9 x 6 cm

\$ 80,000

[VIEW ARTWORK DETAILS](#)



James
Cohan



EAMON ORE-GIRON
Infinite Regress CCX, 2025
Mineral paint and flashe on linen
84 x 84 in.
213.4 x 213.4 cm
\$ 115,000

[VIEW ARTWORK DETAILS](#)



EAMON ORE-GIRON
My Jaguar Face (variation I), 2025
Smalti hand-cut mosaic glass
48 x 48 in.
121.9 x 121.9 cm
\$ 70,000

[VIEW ARTWORK DETAILS](#)



KELLY SINNAPAH MARY
Waiting for the Waters to rise, 2025
Acrylic on canvas
78 x 78 1/2 in.
198.1 x 199.4 cm
\$ 65,000

[VIEW ARTWORK DETAILS](#)



KELLY SINNAPAH MARY
The Book of Violette: Auntie Maryse, 2025
Acrylic on canvas
78 x 88 in.
198.1 x 223.5 cm
\$ 65,000

[VIEW ARTWORK DETAILS](#)



James
Cohan



KATHY BUTTERLY
Nightside Out, 2025
Porcelain, earthenware, glaze
9 5/8 x 6 1/2 x 6 1/8 in.
24.4 x 16.5 x 15.6 cm
\$ 45,000

[VIEW ARTWORK DETAILS](#)



KATHY BUTTERLY
Water Lily, 2025
Porcelain, earthenware, glaze
7 3/4 x 8 x 7 1/2 in.
19.7 x 20.3 x 19.1 cm
\$ 45,000

[VIEW ARTWORK DETAILS](#)





SPENCER FINCH

Double cloud (cumulus humilis, Brooklyn), 2025

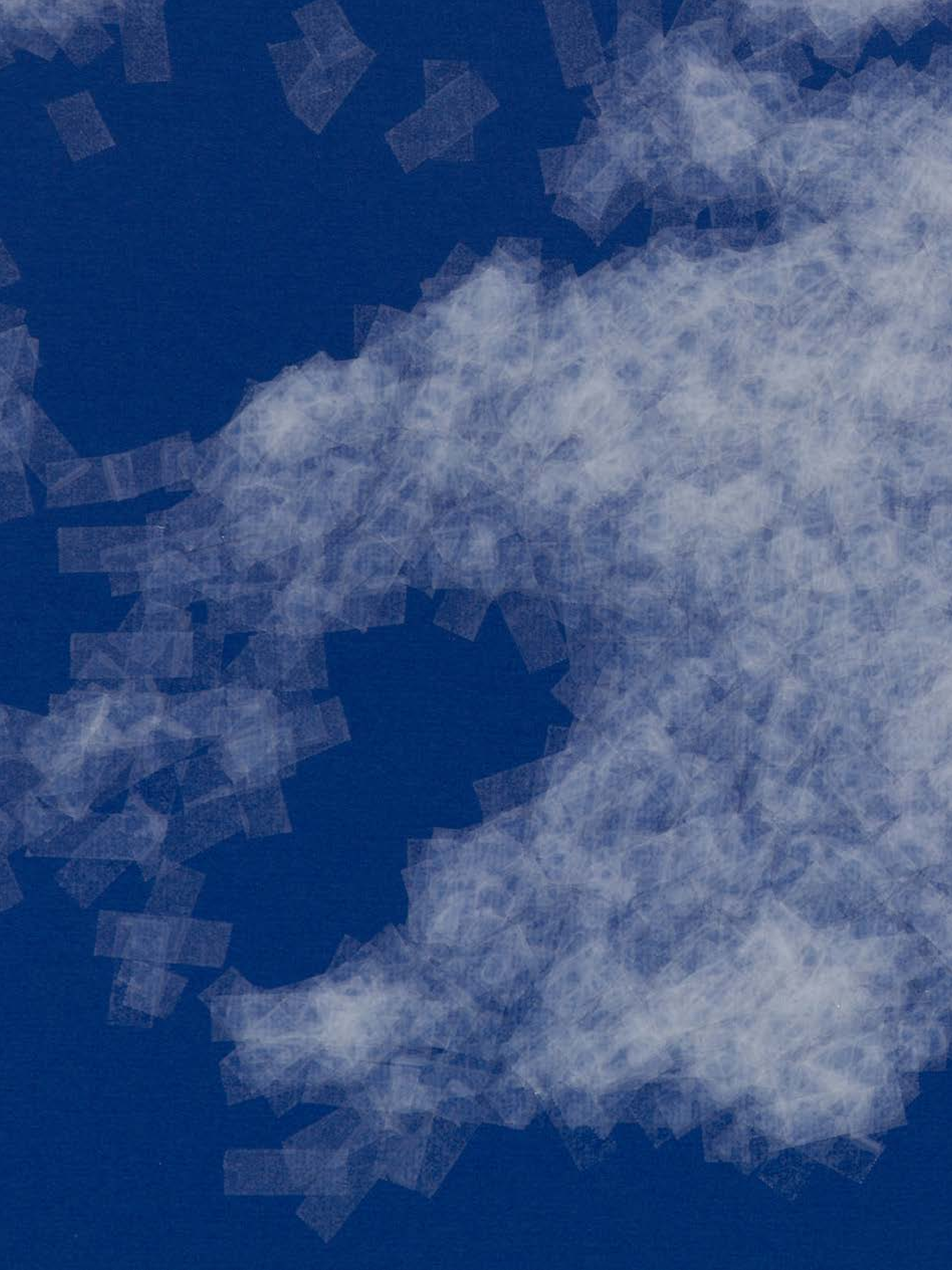
Scotch tape on matboard mounted to Dibond

40 x 55 in.

101.6 by 139.7 cm

\$ 60,000

[VIEW ARTWORK DETAILS](#)





KENNEDY YANKO
Hilma's wing, 2025
Paint skin and metal
25 x 31 x 23 in.
63.5 x 78.7 x 58.4 cm
\$ 125,000

[VIEW ARTWORK DETAILS](#)





KATIE PATERSON and ZELLER & MOYE

Circe, 2024

Glass made with sands from deserts across the Earth

6 x 127 1/2 in.

15.25 x 324 cm

£ 225,000

[VIEW ARTWORK DETAILS](#)



The timeline
of the universe
set on shuffle play

KATIE PATERSON

Ideas (The timeline of the universe set on shuffle play), 2024

Micro waterjet-cut sterling silver

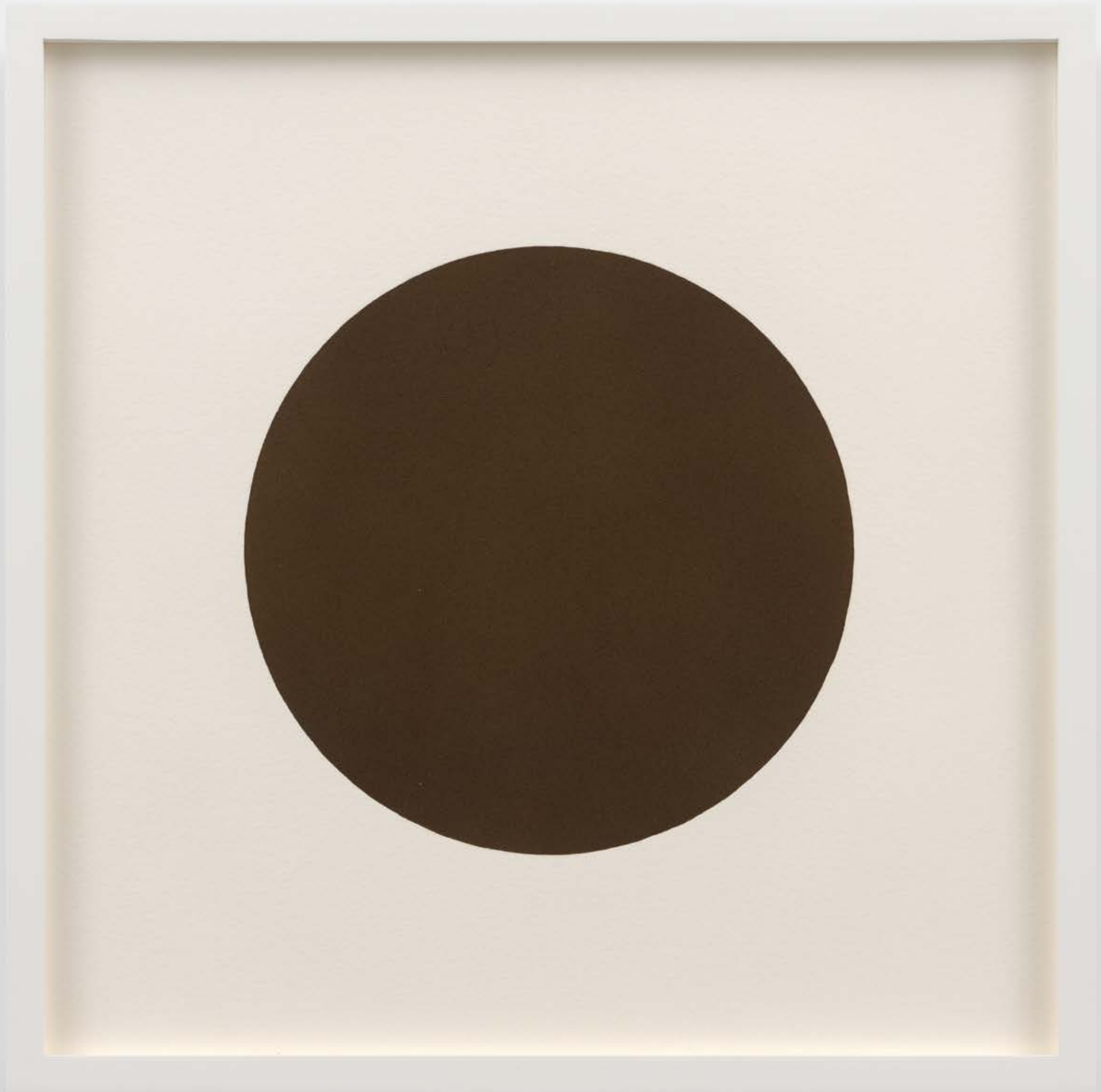
4 1/4 x 9 1/4 x 1/8 in.

10.6 x 23.3 x 0.3 cm

Edition of 3 plus 1 artist's proof (#1/3)

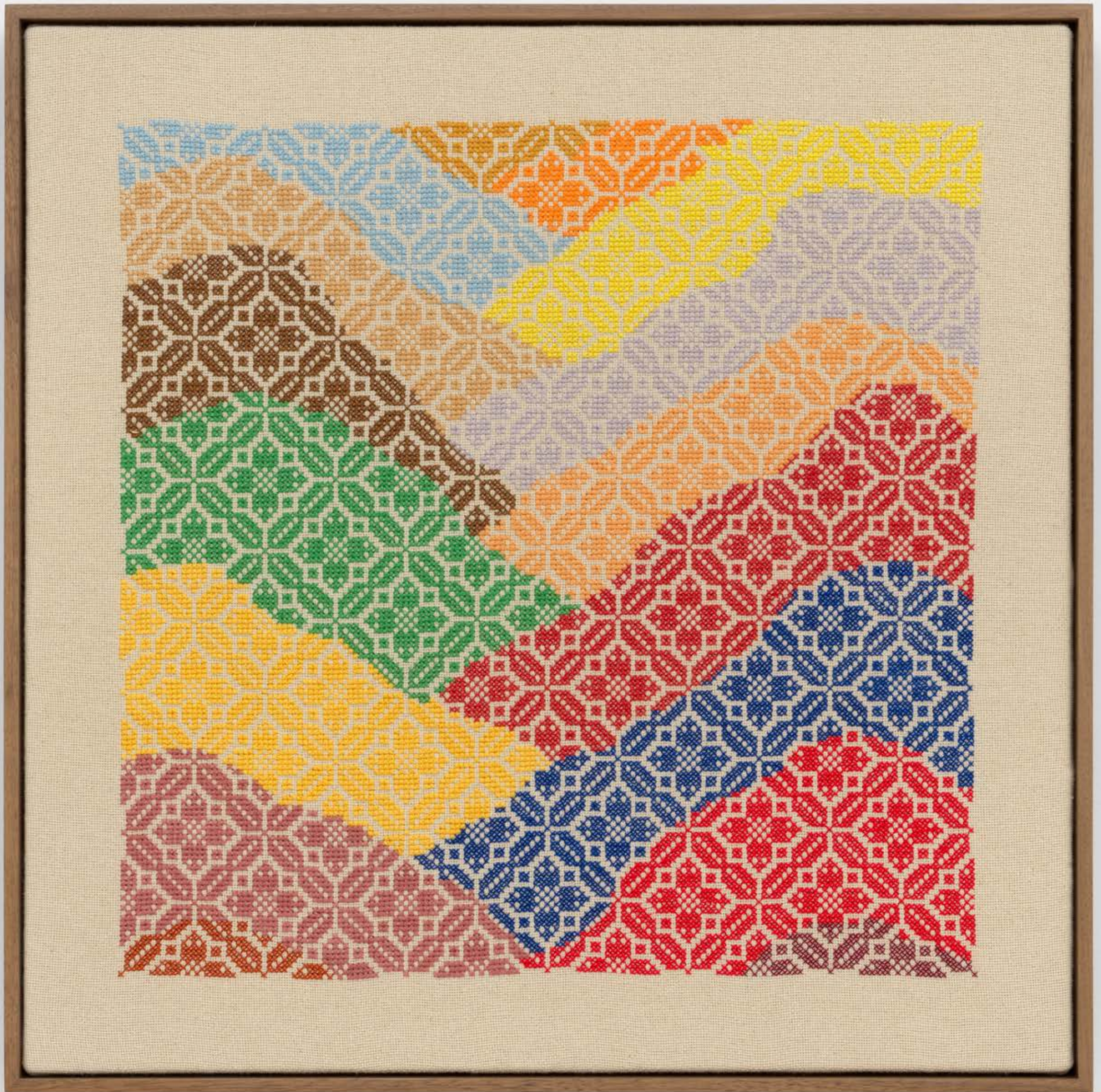
£ 8,500

[VIEW ARTWORK DETAILS](#)



KATIE PATERSON
O VI, 2024
Mixed media using pigment ground from the remains of prehistoric seas
20 1/8 x 20 1/8 in.
51 x 51 cm
Series of 6 plus 2 artist's proofs (#5/6)
£ 10,000

[VIEW ARTWORK DETAILS](#)



JORDAN NASSAR
On the pleated horizon, 2024
Hand-embroidered cotton on cotton
19 1/4 x 19 1/4 x 2 in. (framed)
48.9 x 48.9 x 5.1 cm
\$ 20,000

[VIEW ARTWORK DETAILS](#)



JORDAN NASSAR
How blue the morning is, 2024
Hand-embroidered cotton on cotton
20 3/4 x 20 3/4 x 2 in. (framed)
52.7 x 52.7 x 5.1 cm
\$ 22,000

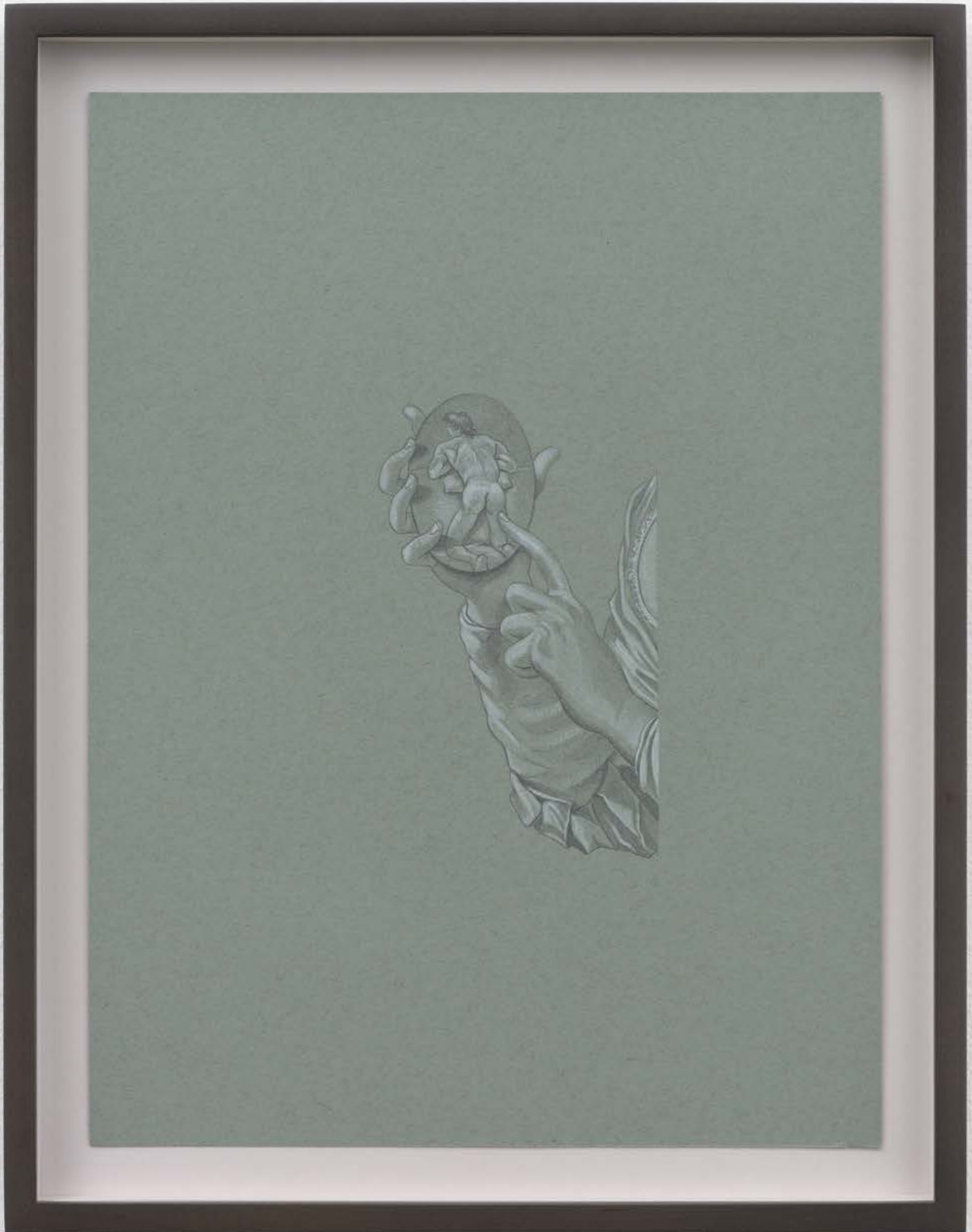
[VIEW ARTWORK DETAILS](#)



JESSE MOCKRIN
By her hand, 2024
Oil on cotton
49 x 33 in.
124.5 x 83.8 cm
\$ 75,000

[VIEW ARTWORK DETAILS](#)





JESSE MOCKRIN
Vignette 16, 2025
Graphite on paper
12 x 9 in.
30.5 x 22.9 cm
\$ 10,000

[VIEW ARTWORK DETAILS](#)



TUAN ANDREW NGUYEN

Plume, 2025

Pounded brass from artillery shells, enamel paint, patina, acrylic,
plywood, metal bracket

Diameter: 39 3/8 in. (100 cm)

\$ 85,000

[VIEW ARTWORK DETAILS](#)



TUAN ANDREW NGUYEN

Thunder & Lightning, 2025

Engraved 57mm brass artillery shell (tuned to F5 at 685.76 Hz), stainless steel cable with attached wooden mallet, pounded brass artillery shells, brass rods

68 7/8 x 48 1/2 x 27 1/2 in.

175 x 123 x 70 cm

\$ 85,000

[VIEW ARTWORK DETAILS](#)



James Cohan



NAUDLINE PIERRE
Evening Song, 2024
Oil on linen
72 x 36 in.
182.9 x 91.4 cm
\$ 60,000

[VIEW ARTWORK DETAILS](#)



James Cohan



NAUDLINE PIERRE
Another Forever, 2025
Oil on linen
42 x 18 in.
106.7 x 45.7 cm
\$ 45,000

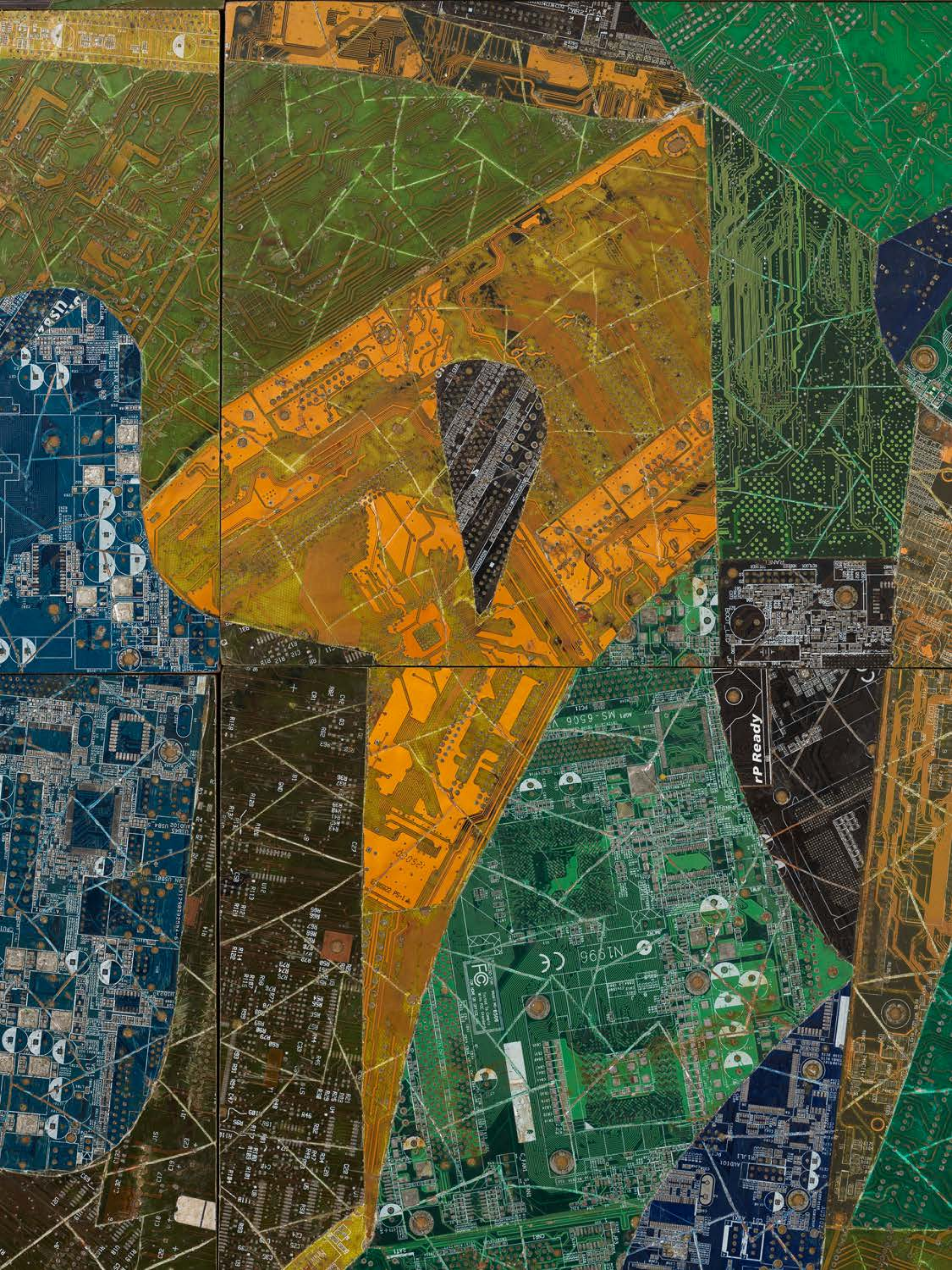
[VIEW ARTWORK DETAILS](#)

James Cohan



ELIAS SIME
ሆነም አልሆነም (REGARDLESS) 3, 2025
Electrical components on wooden panel
65 1/4 x 48 in.
165.7 x 121.9 cm
\$ 90,000

[VIEW ARTWORK DETAILS](#)

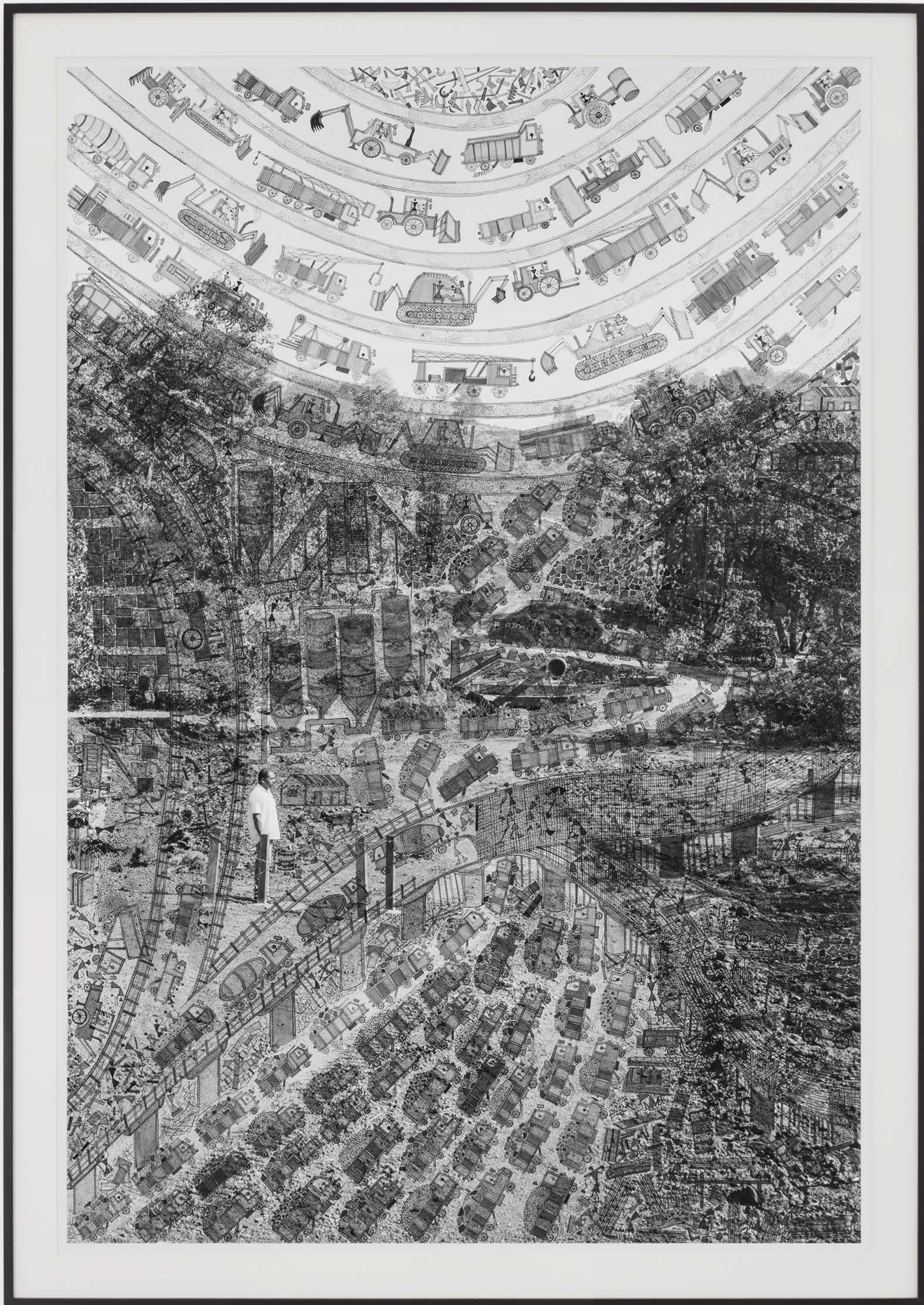




KALOKI NYAMAI
We ngulia chao, 2025
Mixed media, acrylic, collage stitching on canvas
78 3/4 x 78 3/4 x 1 1/2 in.
200 x 200 x 3.8 cm
€ 70,000

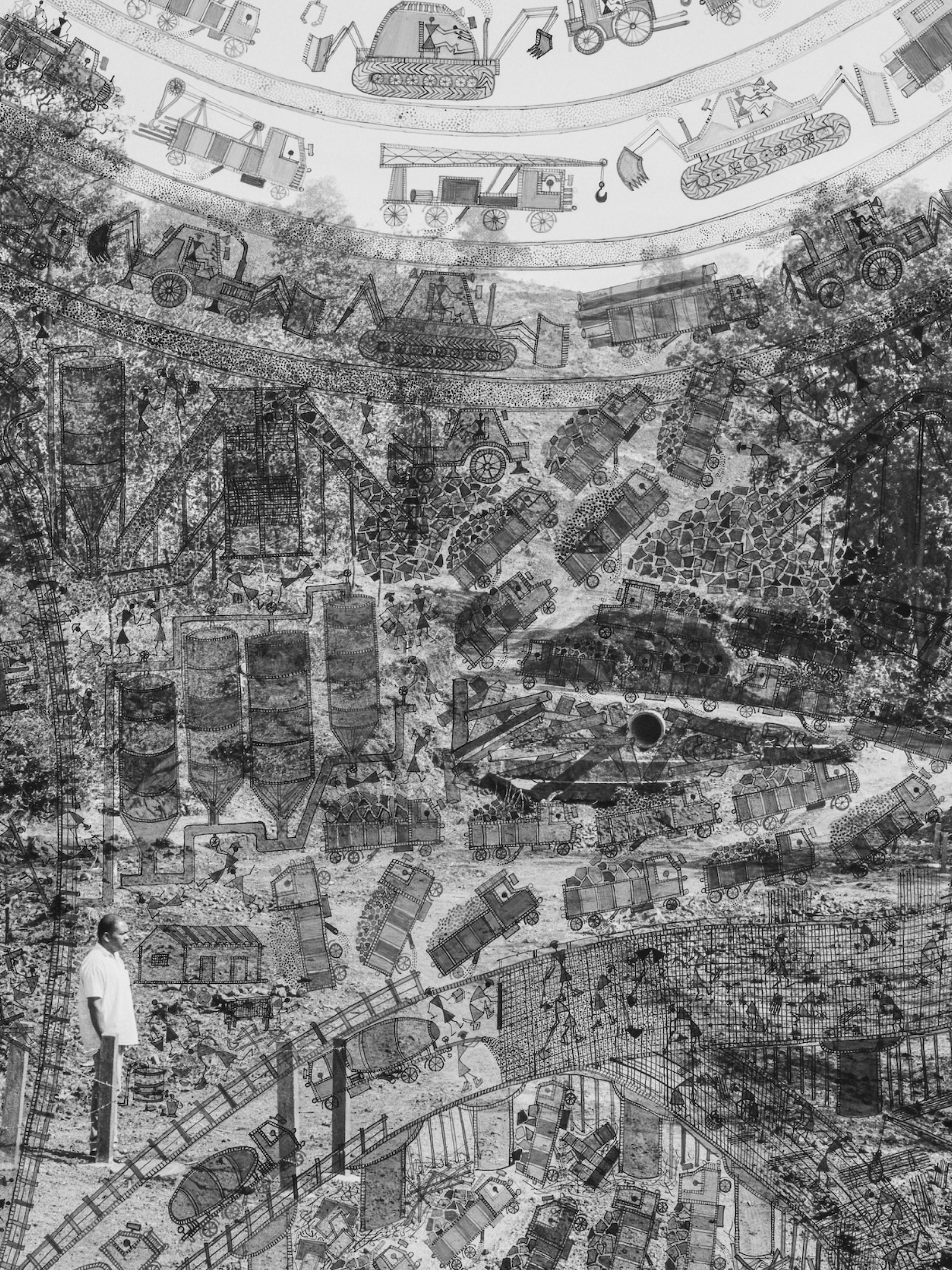
[VIEW ARTWORK DETAILS](#)

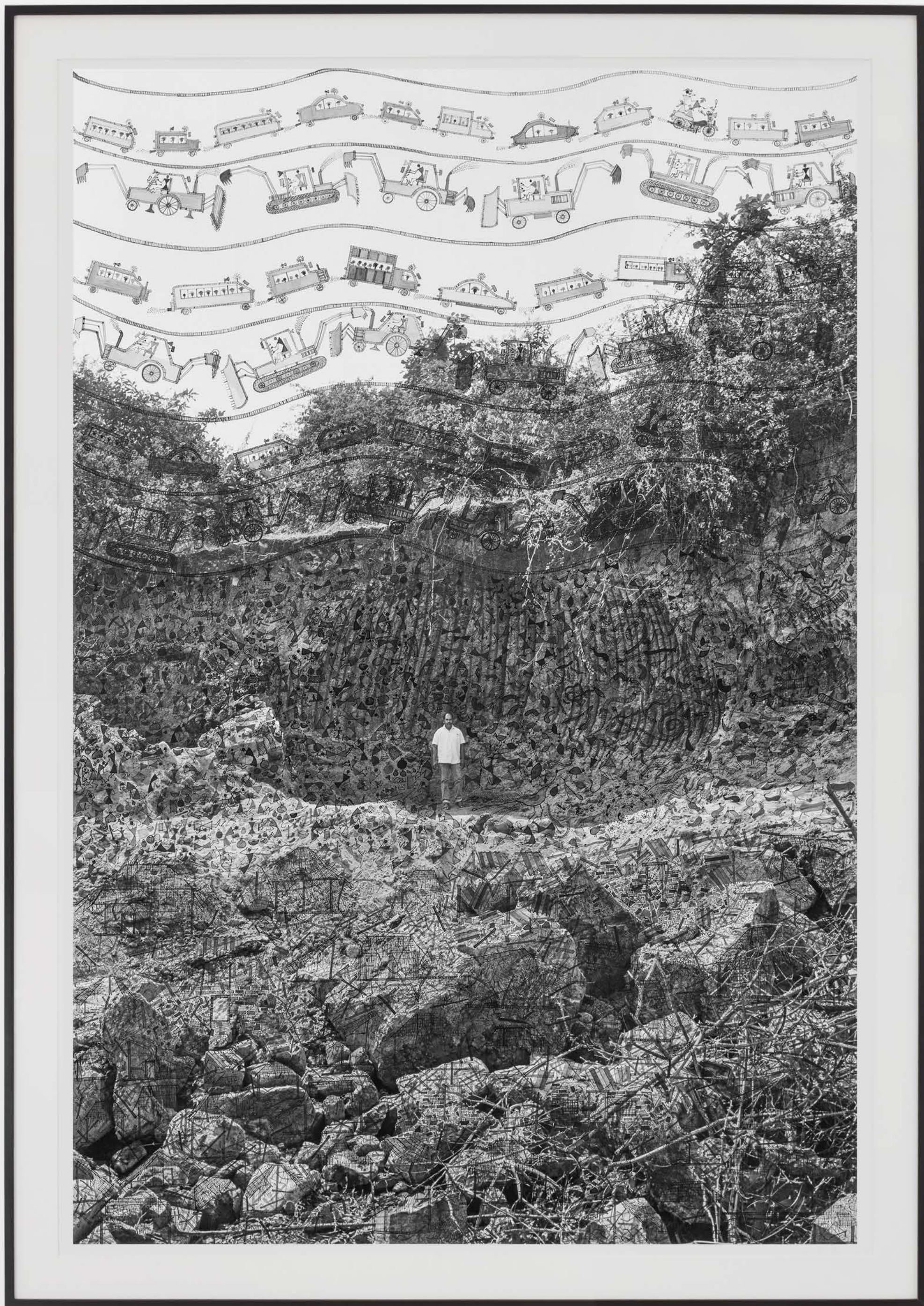




GAURI GILL and RAJESH VANGAD
Machines vs Earth, 2025
from the series 'Fields of Sight,' 2013–ongoing
Acrylic paint on Archival pigment print
62 x 42 in.
157.5 x 106.7 cm
\$ 40,000

[VIEW ARTWORK DETAILS](#)





GAURI GILL and RAJESH VANGAD
Bulldozer Tales, 2025
from the series 'Fields of Sight,' 2013–ongoing
Acrylic paint on Archival pigment print
62 x 42 in.
157.5 x 106.7 cm
\$ 40,000

[VIEW ARTWORK DETAILS](#)



James
Cohan

Basel 2025

VIEW PRICE LIST*

*subject to availability

48 | 52 Walker Street
New York, NY 10013
291 Grand Street
New York, NY 10002