

EDWARD TYLER NAHEM 

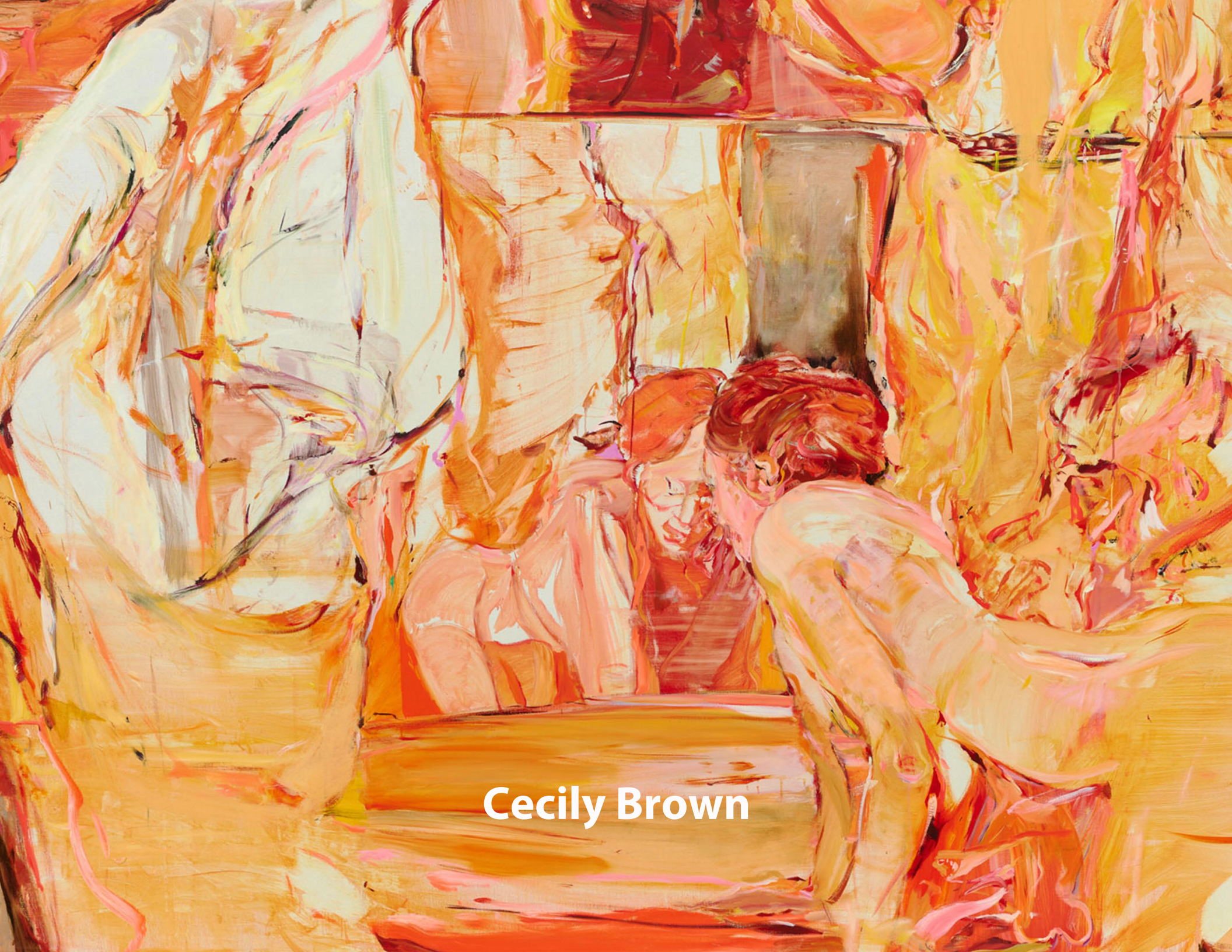
PREVIEW

**Art | Basel**

**June 19-22, 2025 | Stand G3**

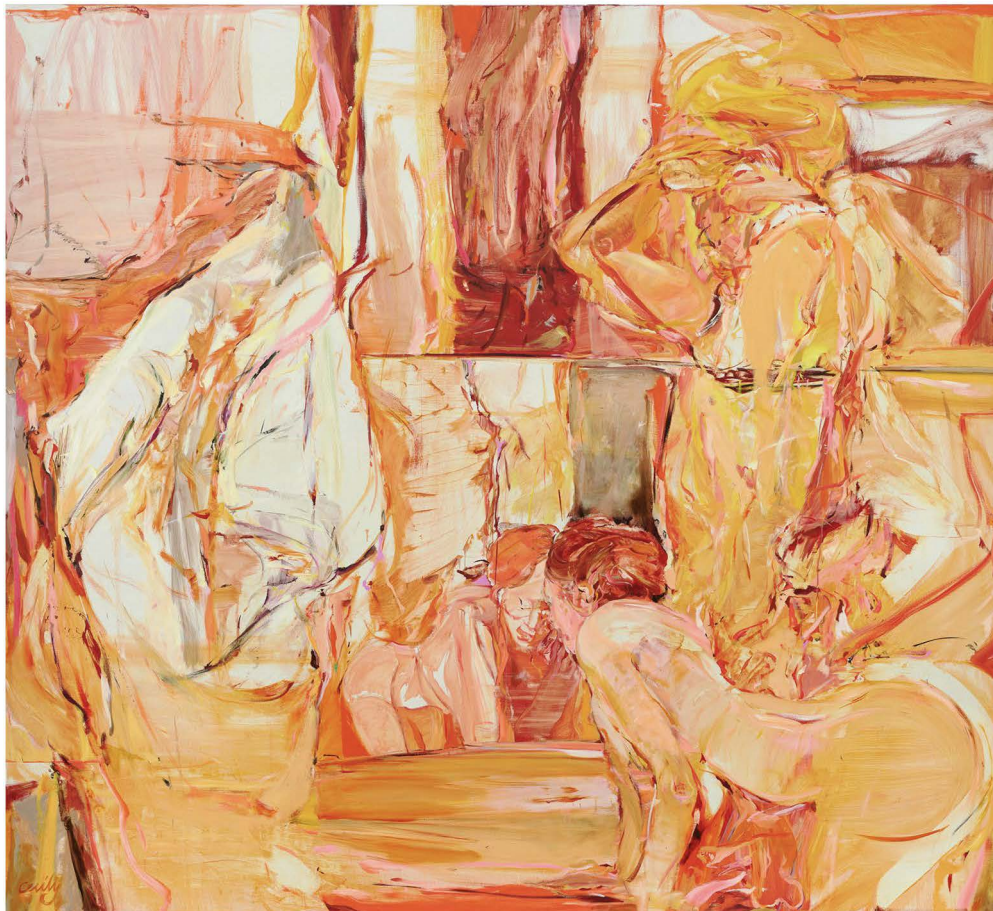
Edward Tyler Nahem  
980 Madison Avenue, 3rd Floor,  
New York, NY, 10075  
212.517.2453  
[info@etnahem.com](mailto:info@etnahem.com)  
[www.edwardtylernahemfineart.com](http://www.edwardtylernahemfineart.com)





Cecily Brown





**Cecily Brown** (b. 1969)

*Girl Trouble*, 1999

Oil on canvas

100 by 110 inches (254 x 279.4 cm)



**Fact Sheet & Essay**



**Joseph Cornell**





**Joseph Cornell** (1903-1972)

*Untitled (Soap Bubble Set Night Skies Series)*, c. 1950

Box construction - glass, cork, nails, clay pipe,  
metal velvet, printed paper collage and paint  
13 by 15 by 4 inches (33 by 38.1 by 10.2 cm)



**Fact Sheet & Essay**



**Joseph Cornell** (1903-1972)

*Window Façade*, c. 1954

Box construction - painted wood, mirror and newsprint

14 7/8 by 10 1/2 by 4 inches (37.8 x 26.7 x 10.2 cm)



**Fact Sheet & Essay**





**Derek Fordjour**





**Derek Fordjour** (b. 1974)

*Single Sculler Stride*, 2024

Acrylic, charcoal, cardboard, and oil pastel  
on newspaper mounted on canvas  
40 by 60 inches (101.6 x 152.4 cm)



**Fact Sheet & Essay**



The image is a reproduction of Keith Haring's artwork 'Two Figures' (1986). It features two stylized, black, rounded figures facing each other, outlined in thick, vibrant blue. The figures have circular eyes and a jagged, sawtooth-like mouth. The background is a solid red color, overlaid with a dense, black grid of small squares, creating a halftone or dot-matrix effect. The overall style is minimalist and graphic, characteristic of Haring's pop art influences.

**Keith Haring**





**Keith Haring** (1958-1990)

*Untitled*, 1983

Acrylic on vinyl tarpaulin with metal grommets

120 by 120 inches (304.8 x 304.8 cm)



**Fact Sheet & Essay**

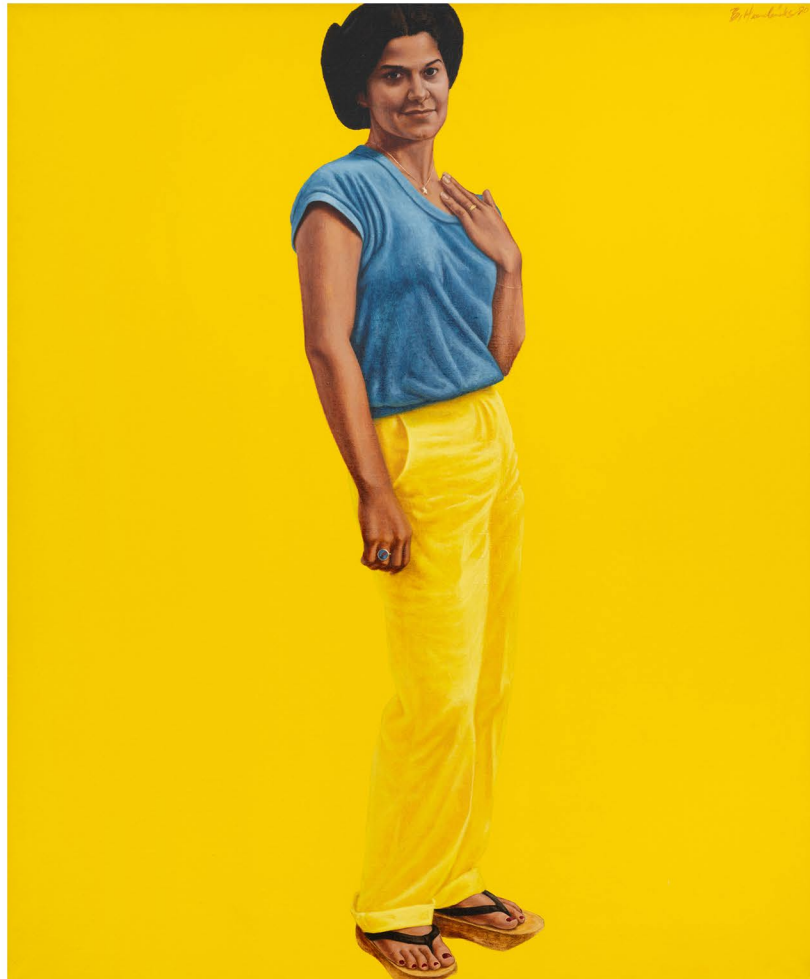


B. Hendricks



**Barkley L. Hendricks**





**Barkley L. Hendricks** (1945 - 2017)

*Selina/Star*, 1980

Oil and acrylic on canvas

60 by 50 inches (152.4 x 127 cm)



**Fact Sheet & Essay**





**Yayoi Kusama**





**Yayoi Kusama** (b. 1929)

*Nets 31*, 1998

Acrylic on canvas

18 by 15 inches (45.7 x 38.1 cm)



**Fact Sheet & Essay**





Henry Moore





**Henry Moore** (1898 - 1986)

*Reclining Figure on Pedestal*, 1959-60

Bronze

51 by 43 1/2 by 24 inches (129.5 x 110.5 x 61 cm)

Edition of 9

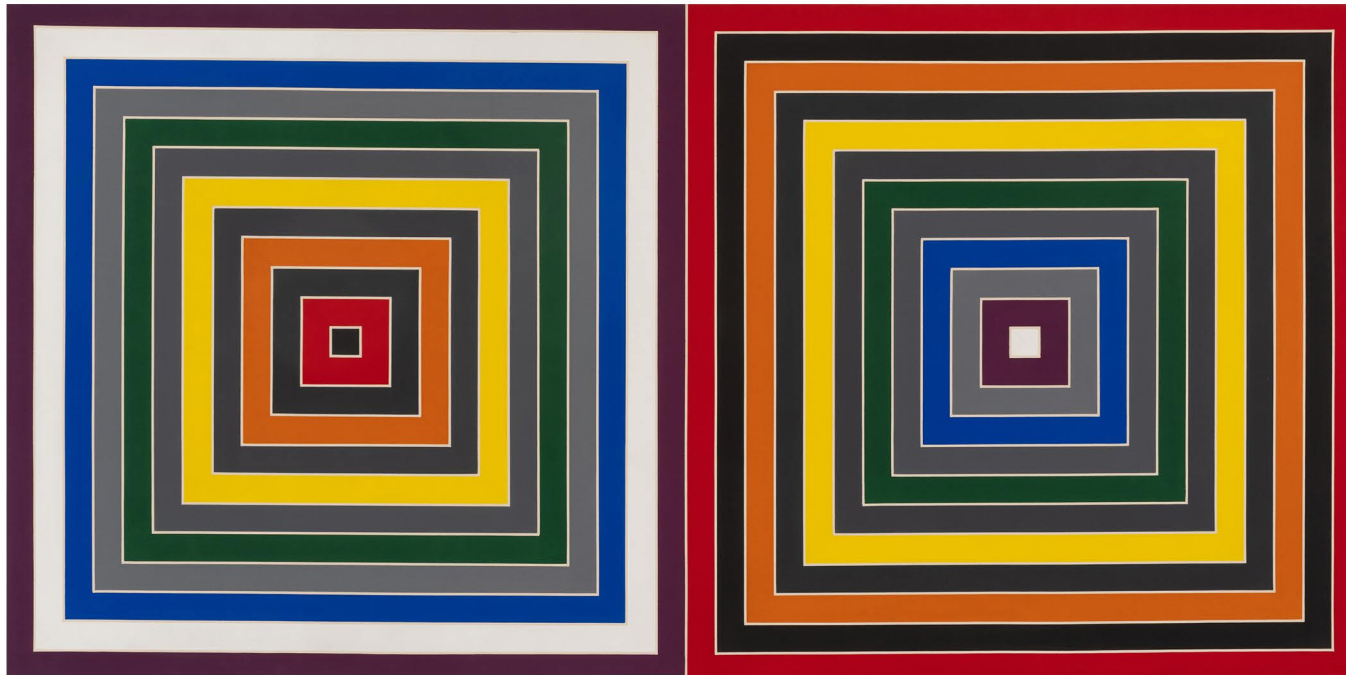


**Fact Sheet & Essay**





**Frank Stella**



**Frank Stella** (1936 - 2024)

*Double Scramble II*, 1968

Fluorescent alkyd and alkyd on canvas

69 by 138 inches (175.3 x 350.5 cm)



**Fact Sheet & Essay**