



# CANADA Art Basel Miami Beach 2023

Miami Beach Convention Center  
Booth C10

## VIP Opening:

Wednesday, December 6, 2023: 9:30am - 7pm

Thursday, December 7, 2023: 10am - 7pm

## Public Opening:

Friday, December 8, 2023: 11am - 6pm

Saturday, December 9, 2023: 11am - 6pm

Sunday, December 10, 2023: 11am - 6pm

CANADA  
60 Lispenard St.  
New York, NY 10013

T: 212 925 4631

E: [gallery@CANADAnewyork.com](mailto:gallery@CANADAnewyork.com)

[www.CANADAnewyork.com](http://www.CANADAnewyork.com)



Joan Snyder  
Ode to Monet, 2021  
Oil, acrylic, paper mache, burlap, dried flowers, flower  
stems, paper, wooden hoop on  
canvas in two parts  
Diptych: 32 x 96 inches (81.28 x 243.84 cm)  
\$140,000



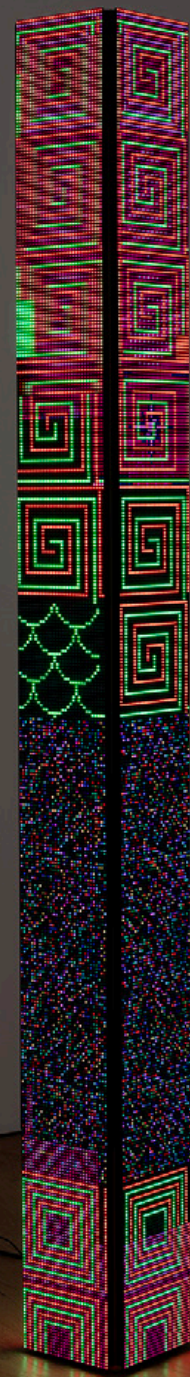


Joan Snyder  
From the Sky, 2022  
Oil, acrylic, burlap, mud, pastel on linen  
24 x 24 inches (60.96 x 60.96 cm)  
\$45,000



Luke Murphy  
Tower Pattern III, 2022  
LED matrix panels, metal studs, armature, video driver  
hardware, software, power supplies, PC, code  
76 × 8 × 8 inches (193.04 × 20.32 × 20.32 cm)  
\$18,000





Luke Murphy  
Glories Tower, 2023  
LED matrix panels, wood, metal studs, armature, video  
driver hardware, software, power supplies, PC, code  
74 ½ × 9 × 8 inches (189.23 × 22.86 × 20.32 cm)  
\$18,000







Katherine Berhardt  
World Cup (Messi), 2023  
Acrylic and spray paint on canvas  
72 x 78 inches (182.88 x 198.12 cm)  
\$180,000

Katherine Berhardt  
McMushrooms, 2023  
Acrylic and spray paint on canvas  
78 x 72 inches (198.12 x 182.88 cm)  
\$180,000





Katherine Bernhardt  
McSundae, 2023  
Acrylic and spray paint on canvas  
30 x 30 inches (76.20 x 76.20 cm)  
Framed: 31 ¼ x 31 ¼ x 2 ¼ inches  
(79.38 x 79.38 x 5.72 cm)  
\$50,000



Katherine Berhardt  
Mayhem, 2023  
Acrylic and spray paint on canvas  
60 x 48 inches (152.40 x 121.92 cm)  
\$110,000



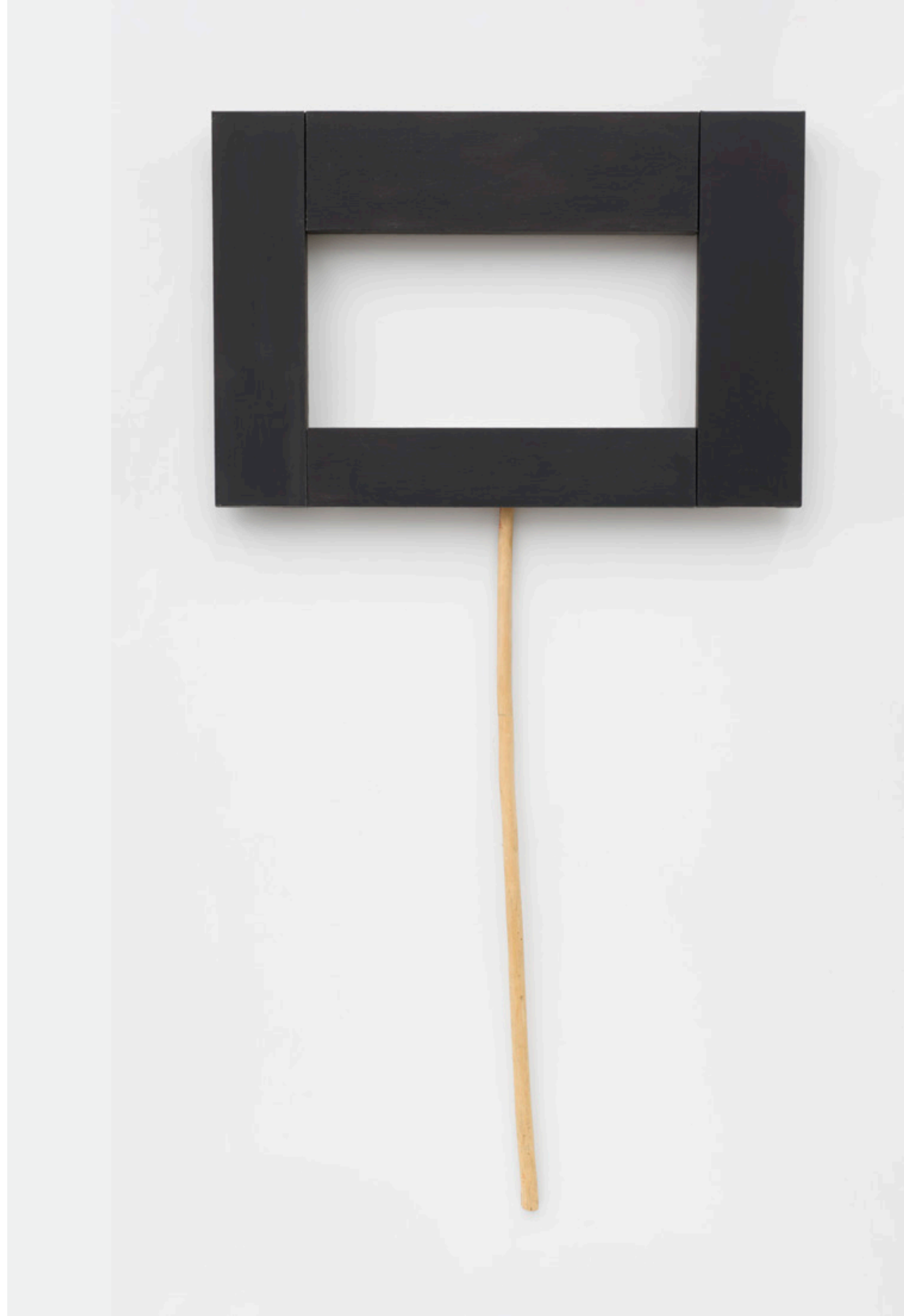


Marc Hundley  
 Girls in Trees (for Rebecca), 2023  
 Acrylic on canvas, artist's frame  
 20 × 14 inches (50.80 × 35.56 cm)  
 Framed: 22 <sup>3</sup>/<sub>4</sub> × 16 <sup>3</sup>/<sub>4</sub> × 2 inches  
 (57.79 × 42.55 × 5.08 cm)  
 \$5,000

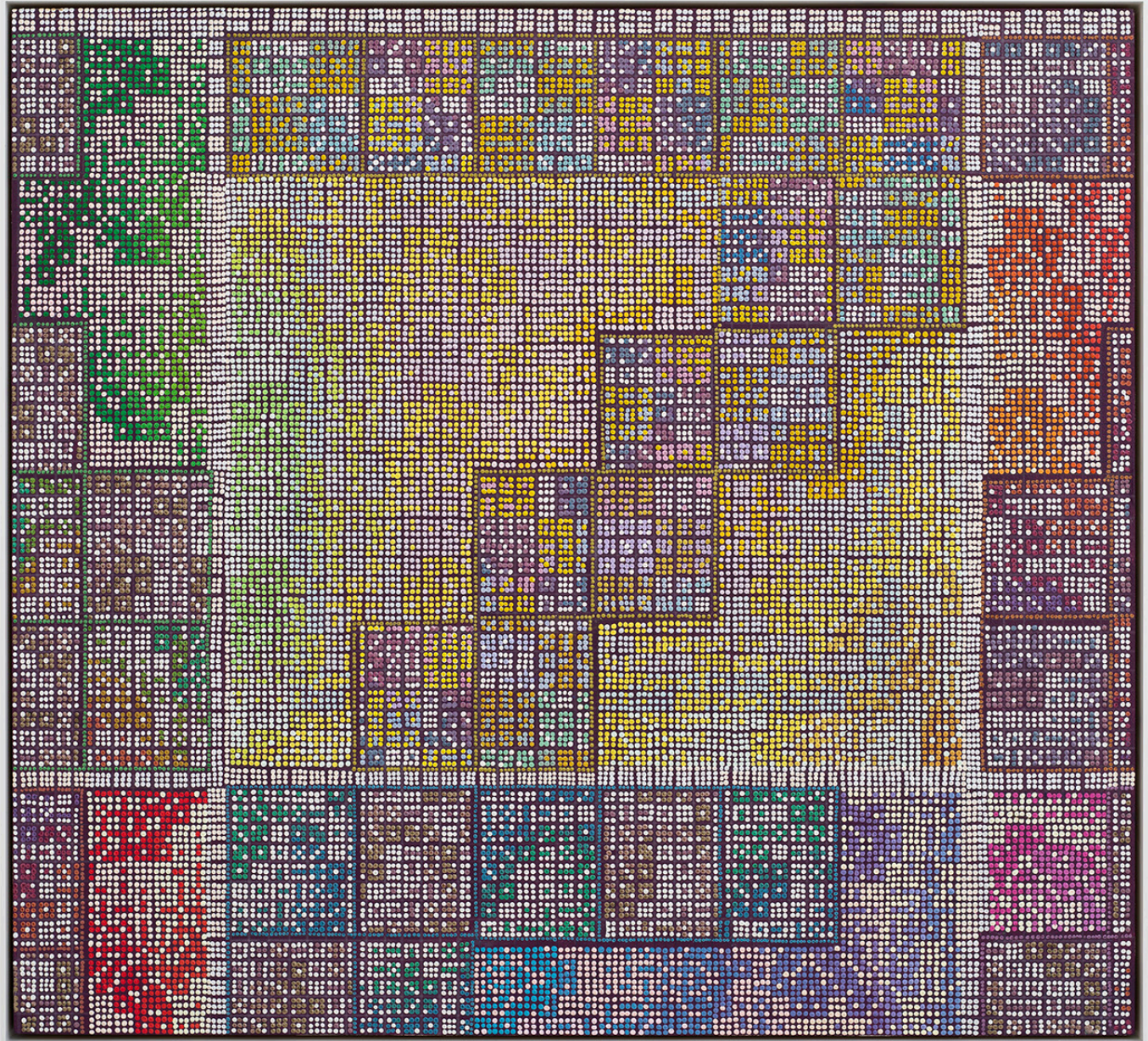
Matt Connors  
After Hocket (Gold), 2017  
Acrylic on canvas  
52 ½ × 48 ½ inches (133.35 × 123.19 cm)



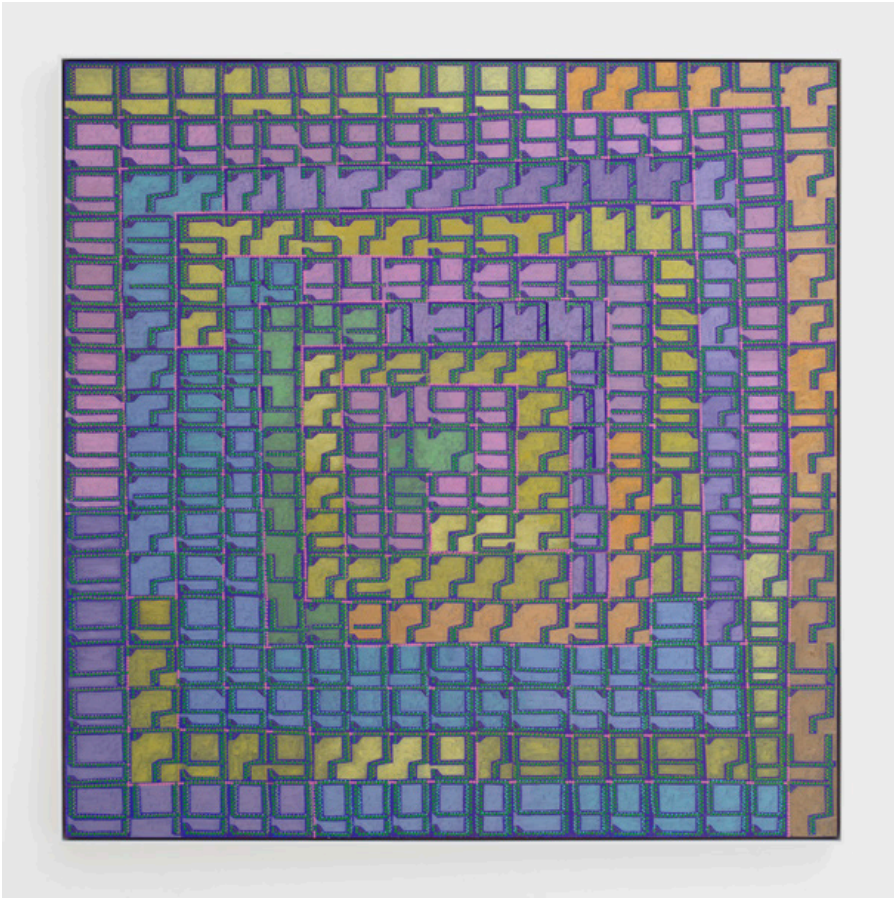
Denzil Hurley  
Glyph in 5 parts #1, 2016–2018  
Oil on linen with stick attachment  
86 × 30 × 4 inches (218.44 × 76.20 × 10.16 cm)  
\$30,000



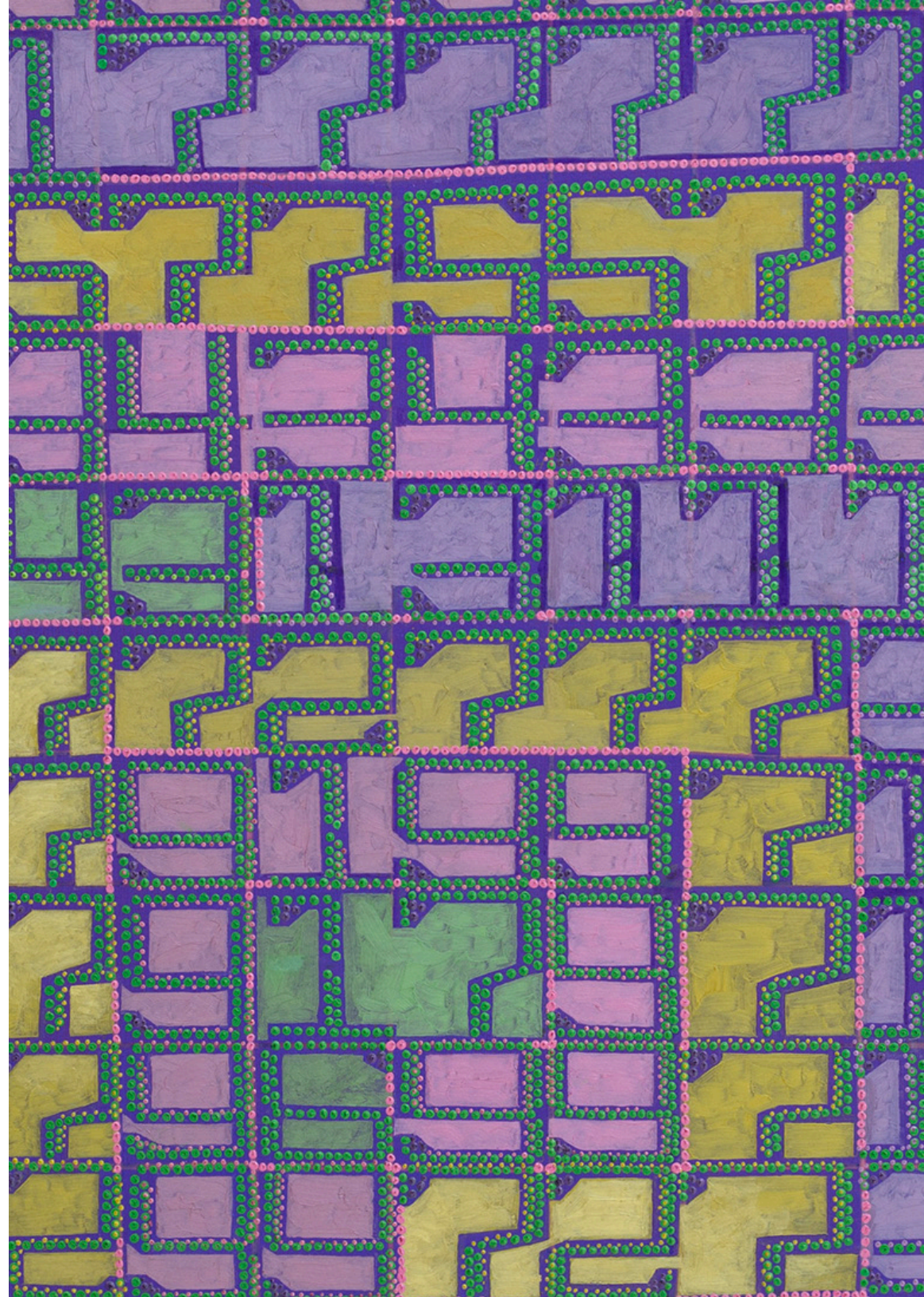




Xylor Jane  
Untitled, 2023  
Oil, ink and graphite on panel  
21 × 23 inches (53.34 × 58.42 cm)  
Framed: 21 ½ × 23 ½ × 1 ½ inches  
(54.61 × 59.69 × 3.81 cm)  
\$40,000



Xylor Jane  
Replay, 2023  
Oil, ink, and graphite on panel  
33 × 33 inches (83.82 × 83.82 cm)  
Framed: 33 ½ × 33 ½ × 1 ½ inches  
(85.09 × 85.09 × 3.81 cm)  
\$55,000



Katherine Bradford  
Mothers Who Swim, 2023  
Acrylic on canvas  
68 x 80 inches (172.72 x 203.20 cm)  
\$100,000



Katherine Bradford  
Half In, Half Out, 2023  
Acrylic on canvas  
40 × 30 inches (101.60 × 76.20 cm)  
\$50,000





Katherine Bradford  
Seated Swimmers, 2023  
Acrylic on canvas  
20 x 16 inches (50.80 x 40.64 cm)  
\$25,000

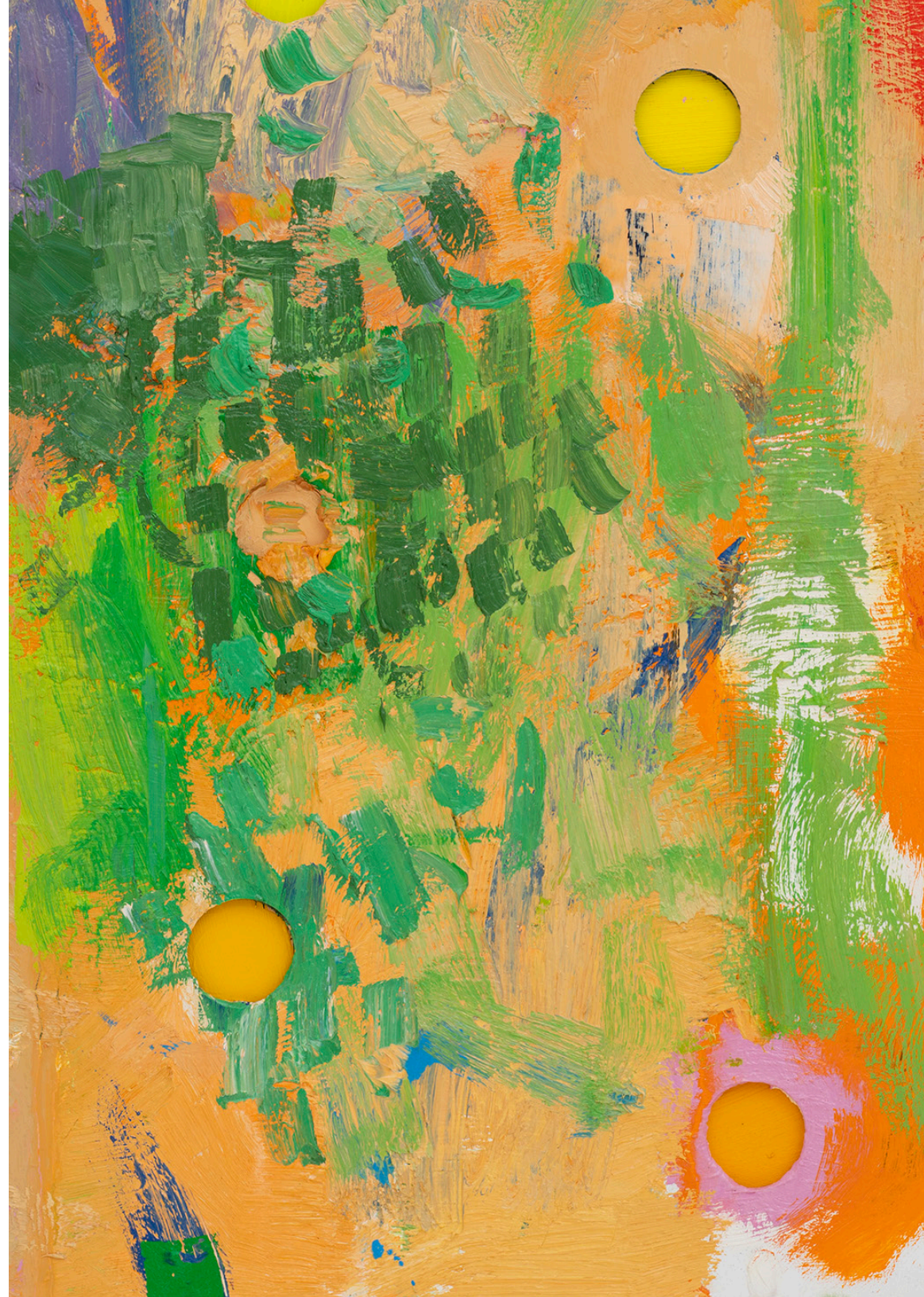


RJ Messineo  
Last Sky, 2023  
Oil, plywood and rare earth magnets on canvas  
71 ½ × 44 ⅛ × 2 ½ inches  
(181.61 × 112.08 × 6.35 cm)  
\$24,000





RJ Messineo  
Reminder, 2023  
Oil on panel  
20 × 16 inches (50.80 × 40.64 cm)  
Framed: 21 × 17 × 2 inches (53.34 × 43.18 × 5.08 cm)  
\$8,000





RJ Messineo  
I don't want to put you down, 2023  
Oil on panel  
20 x 16 inches (50.80 x 40.64 cm)  
Framed: 21 x 17 x 2 ¼ inches (53.34 x 43.18 x 5.72 cm)  
\$8,000

Arcobaleni, 2023

Chromogenic prints, tissue paper, mat board,  
artist's frame

18 ½ × 17 inches (46.99 × 43.18 cm)

Framed: 18 ¾ × 17 ¼ × 1 ½ inches (47.63 ×  
43.82 × 3.81 cm)

\$6,500





Mary Manning  
 Quickly Aging Here, 2023  
 Chromogenic prints, fabric, mat board, artist's frame  
 24 × 17  $\frac{7}{8}$  inches (60.96 × 45.40 cm)  
 Framed: 24  $\frac{1}{4}$  × 18  $\frac{1}{8}$  × 1  $\frac{1}{2}$  inches  
 (61.60 × 46.04 × 3.81 cm)  
 \$8,000



Mary Manning  
Spell, 2023  
Chromogenic prints, tissue paper, mat board,  
artist's frame  
12  $\frac{5}{8}$  x 8  $\frac{1}{2}$  inches (32.07 x 21.59 cm)  
Framed: 12  $\frac{7}{8}$  x 8  $\frac{3}{4}$  x 1  $\frac{1}{2}$  inches  
(32.70 x 22.23 x 3.81 cm)  
\$4,000





Mary Manning  
 Companion Notes, 2023  
 Chromogenic prints, mat board, paper, artist's frame  
 20 x 23 inches (50.80 x 58.42 cm)  
 Framed: 20 ¼ x 23 ¼ x 1 ½ inches  
 (51.44 x 59.06 x 3.81 cm)  
 \$8,000



Mary Manning  
Petrichor, 2023  
Chromogenic prints, mat board, artist's frame  
40 ¼ × 22 ¼ inches (102.24 × 56.52 cm)  
Framed: 40 ½ × 22 ½ × 1 ½ inches  
(102.87 × 57.15 × 3.81 cm)  
\$12,000



Anke Weyer  
Étude Violette, 2023  
Oil and acrylic on canvas  
67 ½ × 48 inches (171.45 × 121.92 cm)  
\$22,000



Kiyoshi Tsuchiya  
Touching Plant, Reading, 2022  
Oil on canvas  
25 × 26 inches (63.50 × 66.04 cm)  
Framed: 26 × 27 × 2 inches (66.04 × 68.58 × 5.08 cm)  
\$4,500

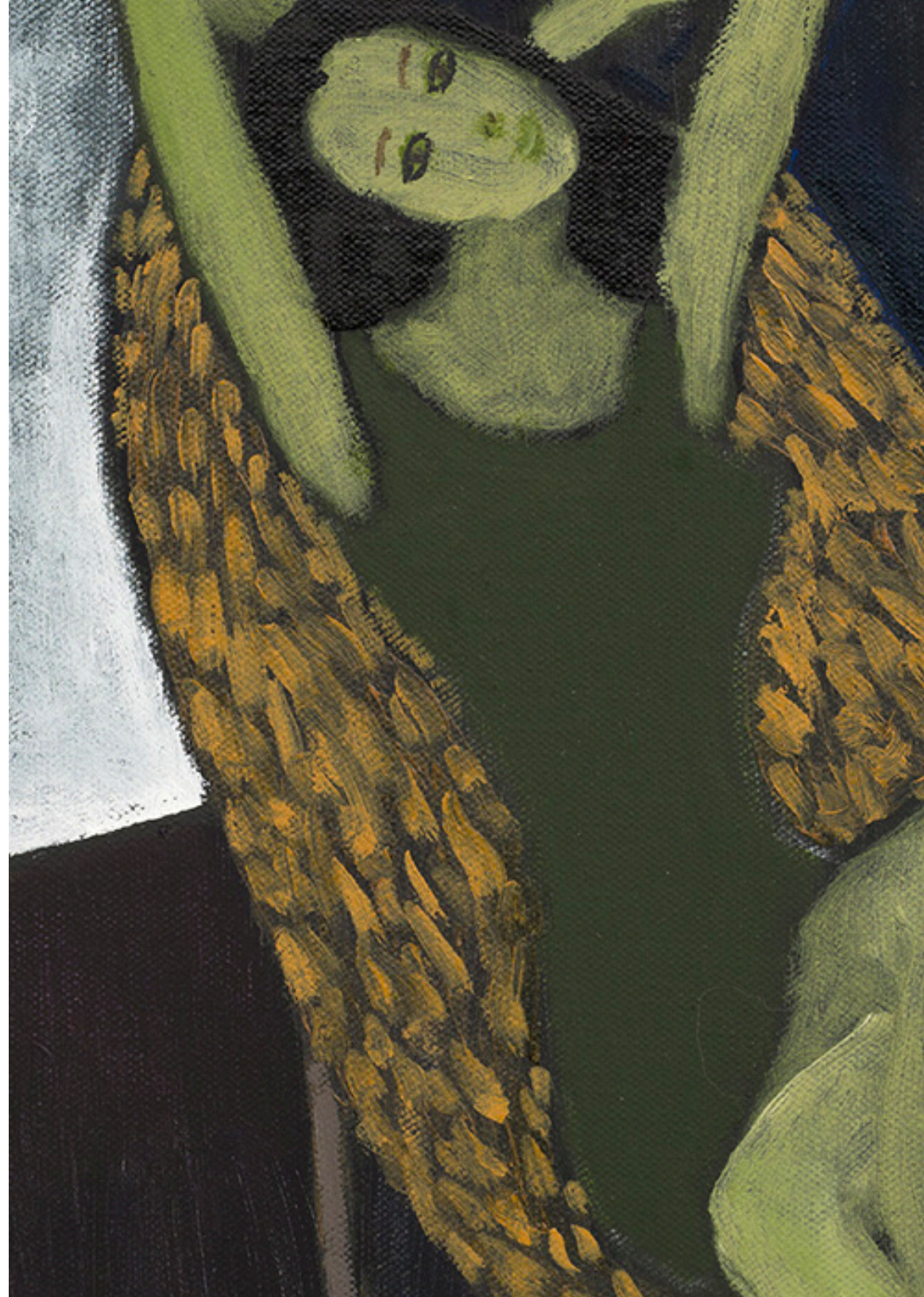


Kiyoshi Tsuchiya  
Girl Stretching, 2022  
Oil on canvas  
19 ½ × 11 ½ inches (49.53 × 29.21 cm)  
Framed: 20 ½ × 12 ½ × 2 inches (52.07 × 31.75 × 5.08 cm)  
\$3,500



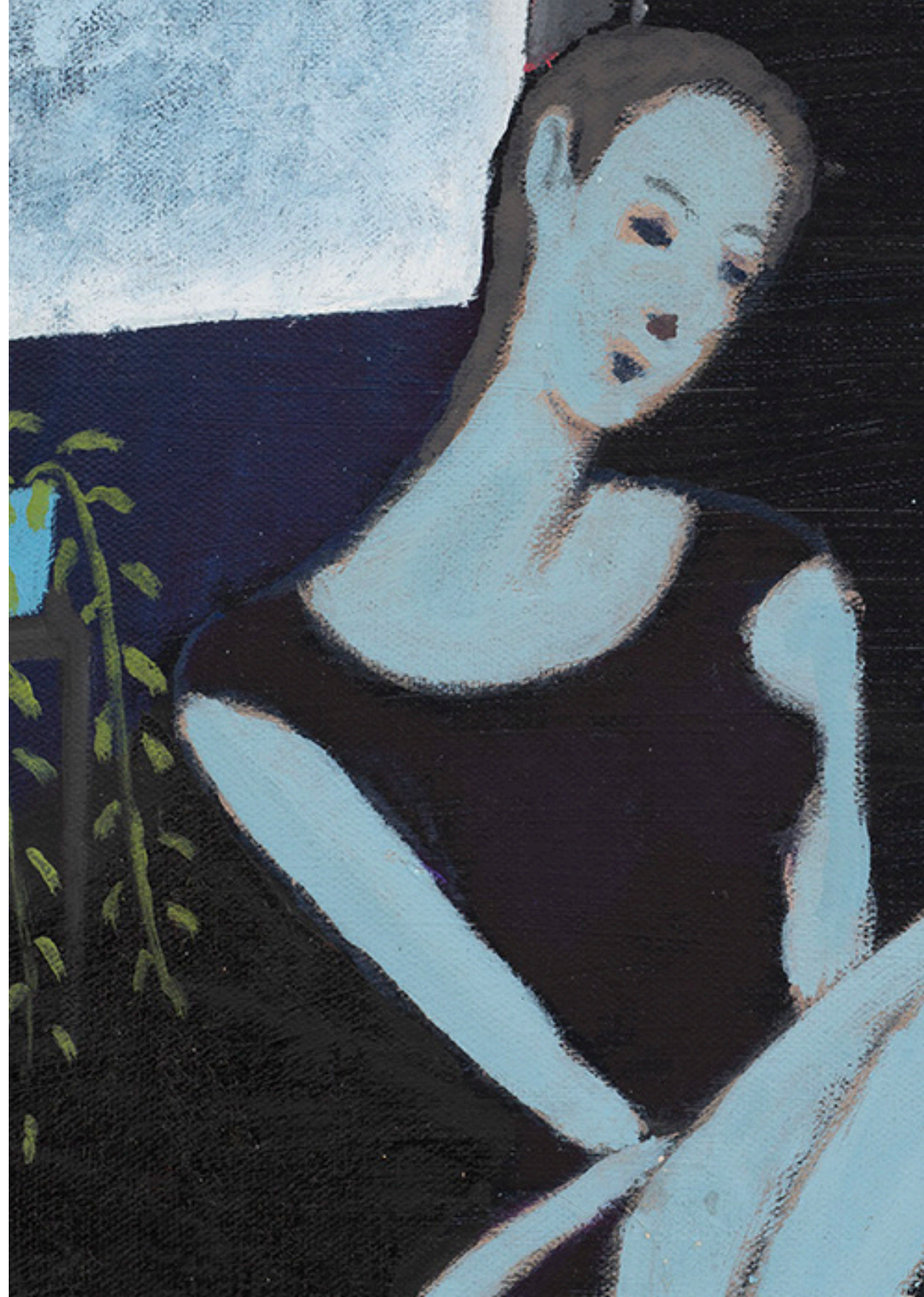


Kiyoshi Tsuchiya  
 Striped Blinds, 2016  
 Oil on canvas  
 16 × 12 inches (40.64 × 30.48 cm)  
 \$3,500





Kiyoshi Tsuchiya  
Blue Window, 2016  
Oil on canvas  
16 × 12 inches (40.64 × 30.48 cm)  
\$3,500



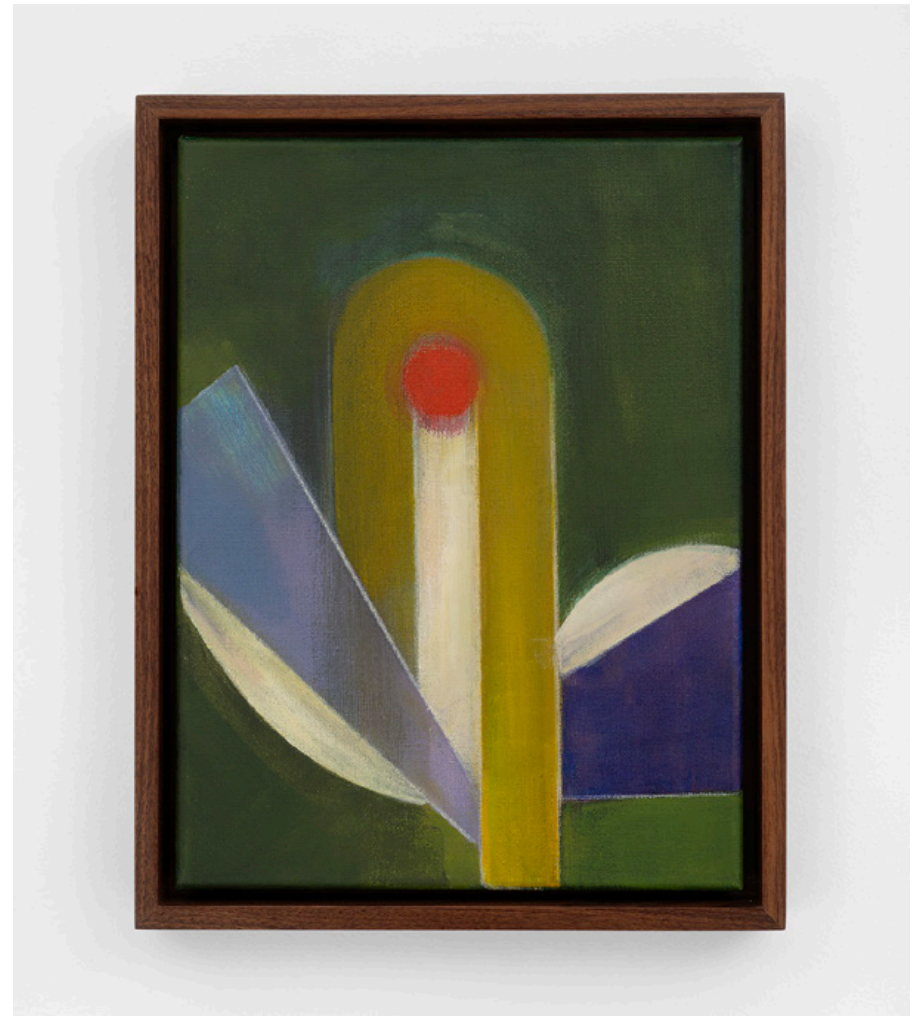
Elizabeth McIntosh  
Night Flowers, 2023  
Oil and Flashe on linen  
57 × 51 inches (144.78 × 129.54 cm)  
\$25,000





Lily Ludlow  
Crocus, 2023  
Acrylic and colored pencil on canvas  
12 × 9 inches (30.48 × 22.86 cm)  
Framed: 13 ¼ × 10 ¼ × 1 ½ inches  
(33.66 × 26.04 × 3.81 cm)  
\$5,000





Lily Ludlow  
Anemone, 2023  
Acrylic and colored pencil on canvas  
12 × 9 inches (30.48 × 22.86 cm)  
Framed: 13 ¼ × 10 ¼ × 1 ½ inches  
(33.66 × 26.04 × 3.81 cm)  
\$5,000



Lily Ludlow  
Listening for an Imminent Presence, 2023  
Acrylic and colored pencil on canvas  
12 × 9 inches (30.48 × 22.86 cm)  
Framed: 13 ¼ × 10 ¼ × 1 ½ inches  
(33.66 × 26.04 × 3.81 cm)  
\$5,000



Rachel Eulena Williams  
Path, 2023  
Canvas, rope, and acrylic paint on wood panel  
38 × 32 × 3 inches (96.52 × 81.28 × 7.62 cm)  
\$22,000





Rachel Eulena Williams  
 Long Division, 2023  
 Canvas, cotton, wood, acrylic paint, and rope on wood stretcher  
 ø 50 inches (ø 127.00 cm)  
 \$30,000





Rachel Eulena Williams  
Nature, 2023  
Canvas, cotton, wood, acrylic paint, and rope on wood stretcher  
ø 50 inches (ø 127.00 cm)  
\$30,000



Robert Janitz  
Sleepwalking, 2023  
Oil, wax, flour on linen  
52 × 40 inches (132.08 × 101.60 cm)  
\$22,000



Robert Janitz  
An Episode in the Life of a Landscape Painter, 2022  
Oil on linen  
80 × 60 inches (203.20 × 152.40 cm)  
\$36,000





Tyson Reeder  
Xorb, 2023  
Acrylic and Flashe on canvas  
27 × 42 inches (68.58 × 106.68 cm)  
Framed: 28 ½ × 43 ½ × 2 inches  
(72.39 × 110.49 × 5.08 cm)  
\$16,000



Tyson Reeder  
Frogtown, 2023  
Acrylic and Flashe on canvas  
27 × 42 inches (68.58 × 106.68 cm)  
Framed: 28 ½ × 43 ½ × 2 inches  
(72.39 × 110.49 × 5.08 cm)  
\$16,000



Scott Reeder  
Bread & Butter (Windsurfing), 2023  
Oil on canvas  
24 × 30 inches (60.96 × 76.20 cm)  
Framed: 25 ¼ × 31 ¼ × 2 inches (64.14 × 79.38 × 5.08 cm)  
\$10,000





Scott Reeder  
Bread & Butter (with Tropical Drinks), 2023  
Oil on canvas  
24 × 30 inches (60.96 × 76.20 cm)  
Framed: 25 ¼ × 31 ¼ × 2 inches (64.14 × 79.38 × 5.08 cm)  
\$10,000



Scott Reeder  
Fruits dans la salle de bain, 2023  
Oil on canvas  
22 × 30 inches (55.88 × 76.20 cm)  
Framed: 23 ¼ × 31 ¼ × 2 inches (59.06 × 79.38 × 5.08 cm)  
\$10,000





Scott Reeder  
Bread & Butter (Pink Modern Pool), 2023  
Oil on canvas  
24 × 40 inches (60.96 × 101.60 cm)  
Framed: 25 ¼ × 41 ¼ × 2 inches (64.14 × 104.78 × 5.08 cm)  
\$14,000



Scott Reeder  
Bread & Butter (Windsurfing), 2023  
Oil on canvas  
24 × 40 inches (60.96 × 101.60 cm)  
Framed: 25 ¼ × 41 ¼ × 2 inches (64.14 × 104.78 × 5.08 cm)  
\$14,000





Ken D. Resseger  
Gay Head, Martha's Vineyard, 2021  
Oil, acrylic, and graphite on wood  
6 × 8 inches (15.24 × 20.32 cm)  
Framed: 7 × 9 × 1 ⅞ inches  
(17.78 × 22.86 × 3.49 cm)  
\$3,800



Ken D. Resseger  
Strange Formation, 2023  
Oil and acrylic on wood  
6 × 8 inches (15.24 × 20.32 cm)  
Framed: 7 × 9 × 1 ¾ inches  
(17.78 × 22.86 × 3.49 cm)  
\$3,800



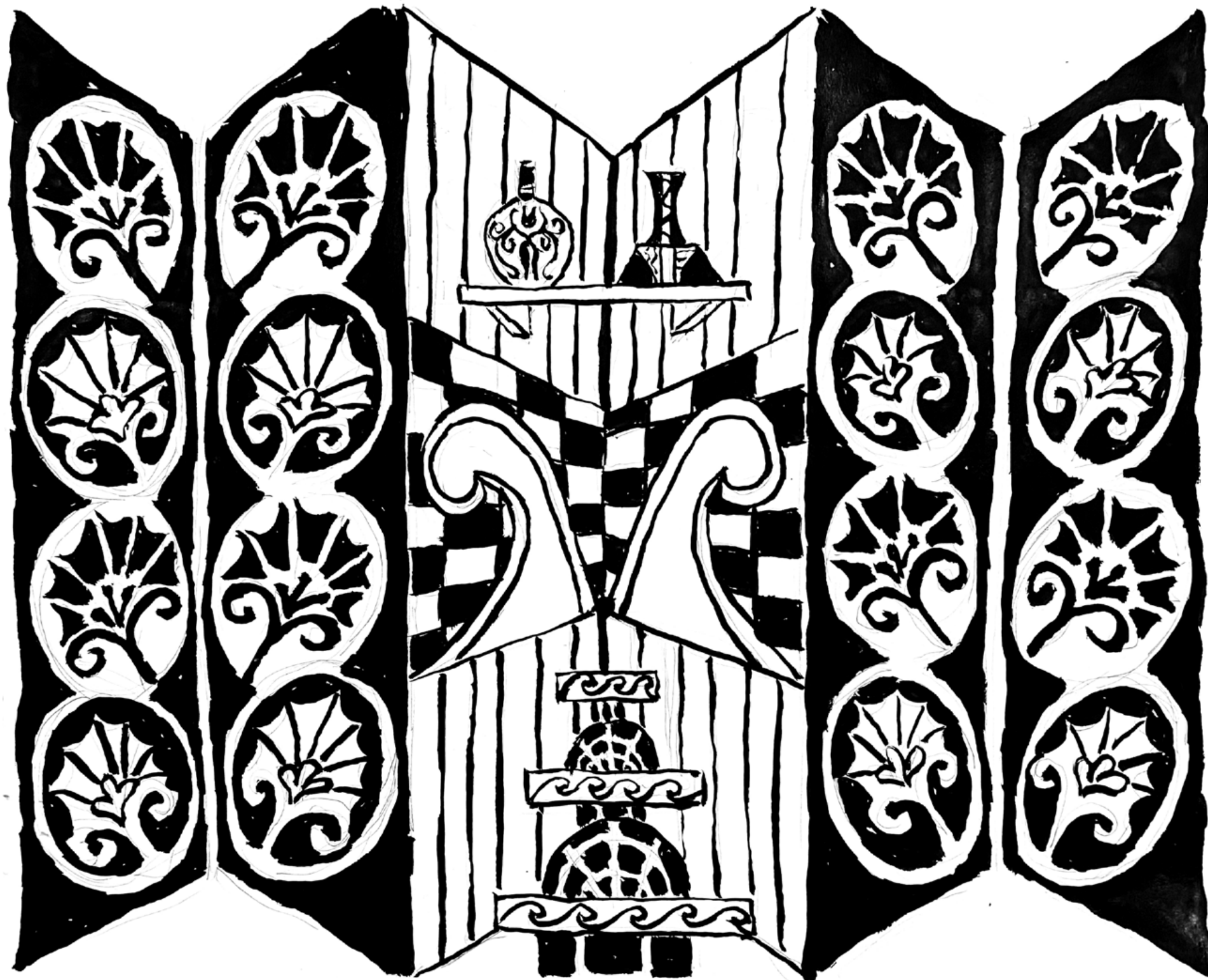
Ken D. Resseger  
Split Agua, 2021-23  
Oil and acrylic on wood  
6 x 8 inches (15.24 x 20.32 cm)  
7 x 9 x 1 3/8 inches  
(17.78 x 22.86 x 3.49 cm) (framed)  
\$3,800

Ken D. Resseger  
Cloudy Sky Connecticut, 2023  
Oil, acrylic and graphite on wood  
8 x 6 inches (20.32 x 15.24 cm)  
Framed: 9 x 7 x 1 3/8 inches  
(22.86 x 17.78 x 3.49 cm)  
\$3,800



Ken D. Resseger  
Little Golden Flowers, 2018  
Oil and acrylic on wood  
8 × 6 inches (20.32 × 15.24 cm)  
Framed: 9 × 7 × 1 ¾ inches  
(22.86 × 17.78 × 3.49 cm)  
\$3,800





Kabinett: Elisabeth Kley  
'Café Cleopatra'

CANADA  
60 Lispenard St.  
New York, NY 10013

T: 212 925 4631  
E: [gallery@CANADAnewyork.com](mailto:gallery@CANADAnewyork.com)  
[www.CANADAnewyork.com](http://www.CANADAnewyork.com)





CANADA presents 'Café Cleopatra,' a site-specific installation of new sculpture and painting by Elisabeth Kley. Flanking a central entrance to the rest of the booth, a hand-painted mural complicates the space with trompe l'oeil screens and patterns inspired by sources such as The Wiener Werkstätte, ancient Egyptian design, and modern art. These patterns find their way to the surfaces of Kley's bluish-black and white painted ceramic vessels and objects, creating an immersive environment of motifs drawn from a myriad of influences.

Elisabeth Kley (b. 1956, New York, NY) is best known for her black and white ceramic sculptures, vessels, drawings, and site-specific paintings inspired by modernist theater sets and costume designs. Kley has been the subject of many solo exhibitions including CANADA, New York (2023); Bemis Center For Contemporary Arts, Omaha (2023); The Fabric Workshop and Museum, Philadelphia (2021); Parts & Labor Beacon, Beacon (2021); Gordon Robichaux, New York (2019); South Willard, Los Angeles (2019), among others. Kley lives and works in New York.

Kley's work is in the collection of the Whitney Museum of American Art. Her first solo museum exhibition, *Minutes of Sand*, at The Fabric Workshop and Museum, ran from March-August 2021 and traveled to the Bemis Center for Contemporary Art in Omaha through April 2023. A catalog for *Minutes of Sand* was published in April 2023.

[Pictured on previous spread: Elisabeth in her Brooklyn, New York studio. Photo by Marquale Ashley, 2023]

**Linked here: [Video documentation of Elisabeth Kley's 2023 exhibition at CANADA, A Seat in the Boat of the Sun.](#)**





Red Fan Lotuses, Green Background, 2020  
Watercolor and graphite on paper  
17 × 14 inches (43.18 × 35.56 cm)  
Framed: 20 <sup>3</sup>/<sub>4</sub> × 17 <sup>3</sup>/<sub>4</sub> × 1 <sup>1</sup>/<sub>2</sub> inches  
(52.71 × 45.09 × 3.81 cm)  
\$3,000



Paisley on Yellow, 2020  
Watercolor and graphite on paper  
17 × 14 inches (43.18 × 35.56 cm)  
Framed: 20 <sup>3</sup>/<sub>4</sub> × 17 <sup>3</sup>/<sub>4</sub> × 1 <sup>1</sup>/<sub>2</sub> inches  
(52.71 × 45.09 × 3.81 cm)  
\$3,000





Magenta Background, 2020  
Watercolor and graphite on paper  
24 × 19 inches (60.96 × 48.26 cm)  
Framed: 27 <sup>3</sup>/<sub>4</sub> × 22 <sup>3</sup>/<sub>4</sub> × 1 <sup>1</sup>/<sub>2</sub> inches  
(70.49 × 57.79 × 3.81 cm)  
\$4,000



Blue Background, Red and Gold, Greek, 2020  
Watercolor and graphite on paper  
24 × 19 inches (60.96 × 48.26 cm)  
Framed: 27  $\frac{3}{4}$  × 22  $\frac{3}{4}$  × 1  $\frac{1}{2}$  inches  
(70.49 × 57.79 × 3.81 cm)  
\$4,000





Triangles with Buds, 2021  
Glazed earthenware  
7 × 14 ½ × 3 ½ inches (17.78 × 36.83 × 8.89 cm)  
\$6,000





Lotus Right Angle, 2020  
Glazed earthenware  
21 x 19 x 10 inches (53.34 x 48.26 x 25.40 cm)  
\$12,000



Albarelo with Sprigs, 2023  
Glazed earthenware  
22 x 9 x 9 inches (55.88 x 22.86 x 22.86 cm)  
\$9,000





Albarelo with Rising Triangles, 2023  
Glazed earthenware  
22 × 10 × 10 inches (55.88 × 25.40 × 25.40 cm)  
\$9,000



Vessel with Descending Triangles, 2023  
Glazed earthenware  
21 × 14 × 14 inches (53.34 × 35.56 × 35.56 cm)  
\$10,000



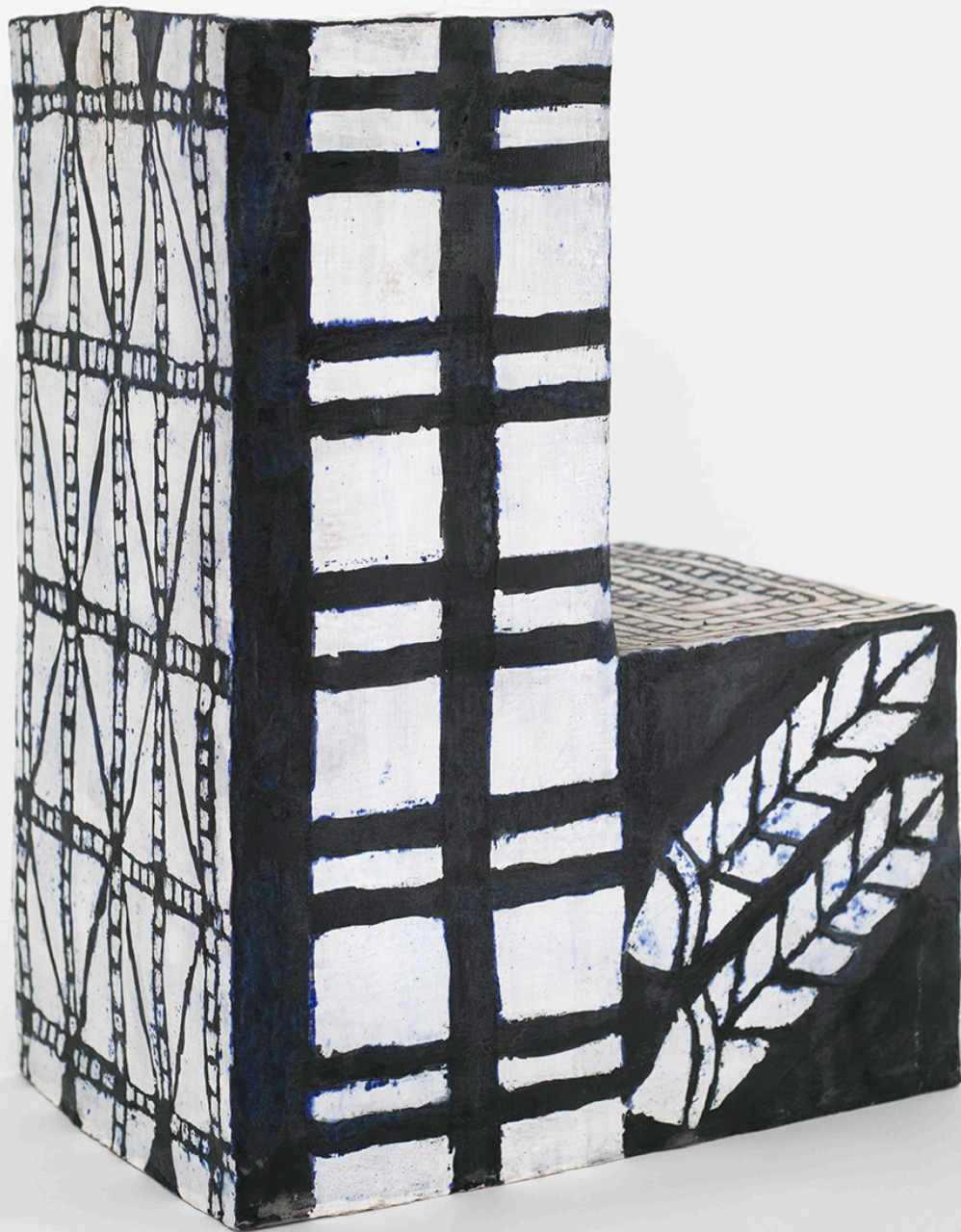


Vessel with Descending Triangles, 2023  
Glazed earthenware  
21 x 14 x 14 inches (53.34 x 35.56 x 35.56 cm)  
\$10,000



Vessel with Long Neck and Arrow Flowers, 2023  
Glazed earthenware  
22 × 19 × 19 inches (55.88 × 48.26 × 48.26 cm)  
\$14,000





L with Four Feathers, 2020  
Glazed earthenware  
20 × 15 × 10 inches (50.80 × 38.10 × 25.40 cm)  
\$10,000



K with Flowers, 2020  
Glazed earthenware  
20 ½ × 13 × 9 ½ inches (52.07 × 33.02 × 24.13 cm)  
\$10,000





Large Parasol Flask, 2016  
Glazed earthenware  
24 × 18 × 7 inches (60.96 × 45.72 × 17.78 cm)  
\$12,000



Flask with Snakes, 2016  
Glazed earthenware  
16 ½ x 11 x 3 inches (41.91 x 27.94 x 7.62 cm)  
\$7,500



Flask with Up and Down Leaves, 2017  
Glazed earthenware  
16 ½ × 13 × 7 inches (41.91 × 33.02 × 17.78 cm)  
\$8,000



Flask with Grapes, 2016  
Glazed earthenware  
15 ½ x 12 ¾ x 4 ½ inches (39.37 x 32.39 x 11.43 cm)  
\$7,500



Coptic Planter with Clover Diamonds, 2020  
Glazed earthenware  
14 × 10 ½ × 10 ½ inches (35.56 × 26.67 × 26.67 cm)  
\$9,000





Planter with Diamond and Axe, 2022  
Glazed earthenware  
16 x 12 ¼ x 12 ¼ inches (40.64 x 31.12 x 31.12 cm)  
\$10,000



Arch with Lotuses, 2021  
Glazed earthenware  
4 ½ × 10 ½ × 3 ½ inches (11.43 × 26.67 × 8.89 cm)  
\$5,000





Arch, 2020  
Glazed earthenware  
12 x 23 x 10 inches (30.48 x 58.42 x 25.40 cm)  
\$10,000



Mountains with Trees, 2020

Glazed earthenware

17 x 20 x 10 inches (43.18 x 50.80 x 25.40 cm)

\$12,000



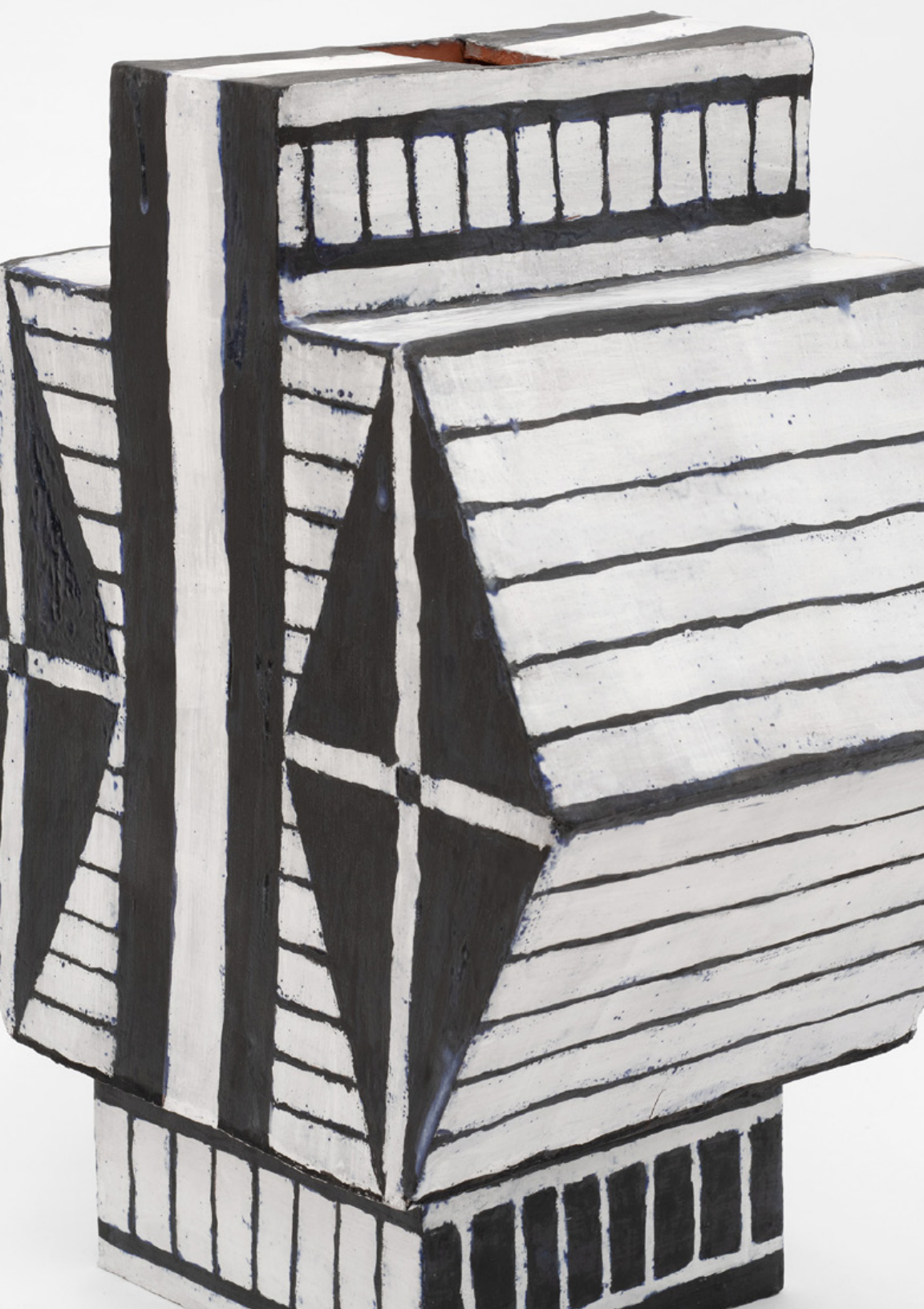


Arch with Lotuses, 2021  
Glazed earthenware  
4 ½ x 10 ½ x 3 ½ inches (11.43 x 26.67 x 8.89 cm)  
\$16,000

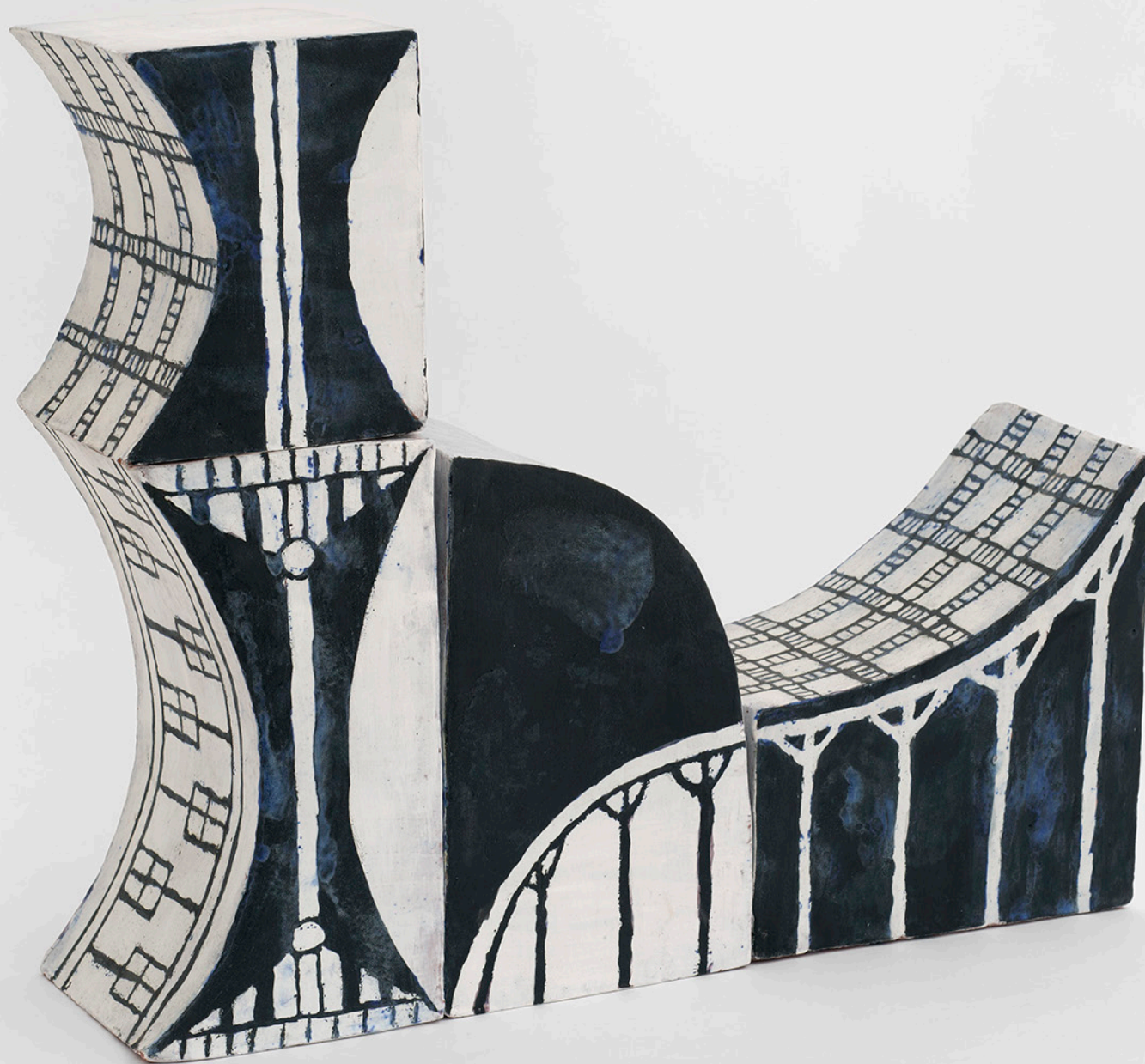


Lotus and Water, 2021  
Glazed earthenware  
21 × 17 × 11 inches (53.34 × 43.18 × 27.94 cm)  
\$14,000





Coptic Planter with Clover Diamonds, 2020  
Glazed earthenware  
14 x 10 ½ x 10 ½ inches (35.56 x 26.67 x 26.67 cm)  
\$14,000



Small Reclining S, 2022  
Glazed earthenware  
17 ½ × 20 × 6 inches  
(44.45 × 50.80 × 15.24 cm)  
\$12,000



Small Snake, 2022  
Glazed earthenware  
12 × 18 × 3 ½ inches  
(30.48 × 45.72 × 8.89 cm)  
\$8,000