

# ART BASEL MIAMI BEACH 2023

**47 CANAL**  
291 Grand Street, 2nd Floor  
New York, NY 10002

## **Art Basel Miami Beach, 2023**

Booth A26

December 8–10, 2023

VIP Preview begins December 6, 2023

For this year's Art Basel Miami Beach, we are pleased to present a selection of works by Emmanuel Louisnord Desir, G. Peter Jemison, Josh Kline, Trevor Shimizu, Nolan Simon, and Anicka Yi.

# EMMANUEL LOUISNORD DESIR

## 47 CANAL

291 Grand Street, 2nd Floor  
New York, NY 10002

**Emmanuel Louisnord Desir** (b. 1997, Brooklyn, NY) lives and works in Los Angeles. He received a BFA from The Cooper Union in 2019. He is participating in the 2023 Hammer Museum Biennial, “Made in L.A. 2023: Acts of Living.” Recent solo exhibitions include “Infirmity,” at Jupiter, Miami (2022); “Prisoners of Hope,” at François Ghebaly, Los Angeles (2021) and “Swing Low, Sweet Chariot” at 47 Canal, New York (2020).

### CV

EMMANUEL LOUISNORD DESIR

47 CANAL  
291 Grand Street, 2nd Floor  
New York, NY 10002



*Slaves on Horses, While Princes Walk, 2022*  
wood  
55 × 31 × 19 in (139.70 × 78.74 × 48.26 cm)  
\$20,000

**G. Peter Jemison** (Seneca, Heron Clan, b. 1945, Silver Creek, NY) lives and works in Victor, New York. His selected solo exhibitions include: the Institute of American Indian Arts Museum of Contemporary Native Art, Santa Fe, New Mexico (2020); Heard Museum, Phoenix (2009); Seneca Iroquois National Museum, Salamanca, New York (2004); and the Iroquois Museum, Howes Cave, New York (1998). He has participated in group exhibitions at The Museum of Modern Art, New York (2022–2023); MoMA PS1, New York (2021); Artists Space, New York (2017); Martin-Gropius-Bau, Berlin (2013); Museum of Arts and Design, New York (2012); Institute of American Indian Arts Museum Contemporary Native Art, New Mexico (2006); Museum der Weltkulturen Frankfurt am Main, Germany (2003); The New Museum of Contemporary Art, New York (1990); the Studio Museum of Harlem, New York (1990); Artists Space, New York (1988); Just Above Midtown Gallery, New York (1981); and the Brooklyn Museum, New York (1972), among others. Jemison's work is also included in public collections such as the Whitney Museum of American Art, New York; Museum of Modern Art, New York; and The National Gallery, Washington D.C..

## CV



G. PETER JEMISON

47 CANAL  
291 Grand Street, 2nd Floor  
New York, NY 10002



*Ansley*, 1987  
collage and colored pencil on paper  
31.63 × 23.13 in (80.33 × 58.74 cm)  
35 × 26 <sup>3</sup>/<sub>4</sub> × 1 <sup>1</sup>/<sub>2</sub> in (88.90 × 67.95 × 3.81 cm) (framed)  
\$30,000



G. PETER JEMISON

47 CANAL  
291 Grand Street, 2nd Floor  
New York, NY 10002



Ansley, 1987 (detail)



# G. PETER JEMISON

## 47 CANAL

291 Grand Street, 2nd Floor  
New York, NY 10002



*Holly and her Kids*, 1987

colored xerography and colored pencil with collage on  
heavy weight watercolor paper

31.13 × 22.38 in (79.06 × 56.83 cm)

34 ¾ × 26 × 1 ½ in (88.27 × 66.04 × 3.81 cm) (framed)

\$30,000



G. PETER JEMISON

47 CANAL  
291 Grand Street, 2nd Floor  
New York, NY 10002



"Holly and her Kids"

Holly and her Kids, 1987 (detail)



G. PETER JEMISON

47 CANAL

291 Grand Street, 2nd Floor  
New York, NY 10002



*Evelyn*, 1987

mixed media and collage on paper

30 × 22.13 in (76.20 × 56.20 cm)

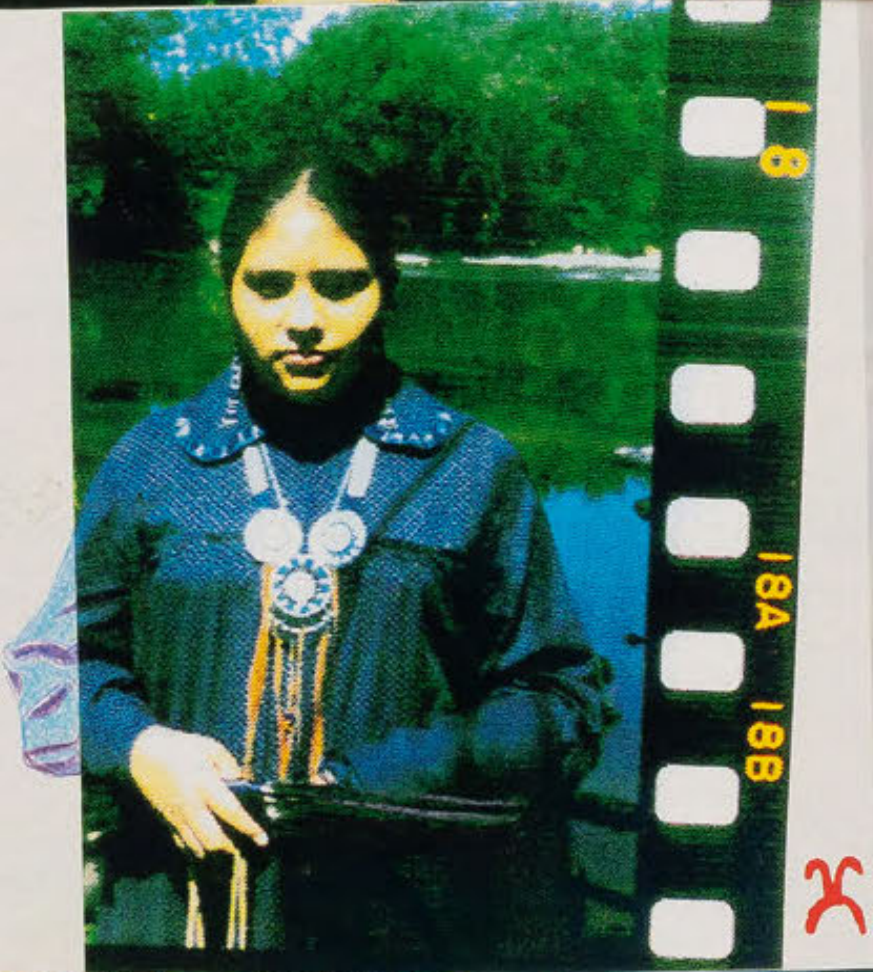
33.63 × 25 ¾ × 1 ½ in (85.41 × 65.41 × 3.81 cm) (framed)

\$30,000



G. PETER JEMISON

47 CANAL  
291 Grand Street, 2nd Floor  
New York, NY 10002



*Evelyn*, 1987 (detail)



G. PETER JEMISON

47 CANAL  
291 Grand Street, 2nd Floor  
New York, NY 10002



*Yussin (Vanishing American Myth)*, 1987  
mixed media collage on paper  
20 x 25 in (50.80 x 63.50 cm)  
23 ¼ x 28 ¼ x 1 ½ in (59.06 x 71.76 x 3.81 cm) (framed)  
\$25,000



G. PETER JEMISON



47 CANAL  
291 Grand Street, 2nd Floor  
New York, NY 10002



*Yussin (Vanishing American Myth), 1987*



G. PETER JEMISON

47 CANAL

291 Grand Street, 2nd Floor  
New York, NY 10002



*Fleeta*, 1987

collage and colored pencil on paper

32 × 22 in (81.28 × 55.88 cm)

35.63 × 25.63 × 1 ½ in (90.49 × 65.09 × 3.81 cm) (framed)

\$30,000



G. PETER JEMISON



47 CANAL  
291 Grand Street, 2nd Floor  
New York, NY 10002



*Fleeta, 1987*



# G. PETER JEMISON

**47 CANAL**  
291 Grand Street, 2nd Floor  
New York, NY 10002



*Pam*, 1987  
collage and colored pencil on paper  
20.13 x 15.38 in (51.12 x 39.05 cm)  
23 x 18.13 x 1.38 in (58.42 x 46.04 x 3.49 cm) (framed)  
\$20,000



G. PETER JEMISON

47 CANAL  
291 Grand Street, 2nd Floor  
New York, NY 10002



*Pam, 1987 (detail)*



G. PETER JEMISON

47 CANAL

291 Grand Street, 2nd Floor  
New York, NY 10002



*Robin Dance tyo': yak oeno*, 1986

colored pencil on paper bag

16 ¾ × 17 ½ × 6 ½ in (42.55 × 44.45 × 16.51 cm)

\$30,000

G. PETER JEMISON

47 CANAL  
291 Grand Street, 2nd Floor  
New York, NY 10002



*Robin Dance tyo': yak oeno, 1986*



G. PETER JEMISON

47 CANAL  
291 Grand Street, 2nd Floor  
New York, NY 10002



*Robin Dance tyo': yak oeno, 1986 (detail)*



**Josh Kline** (b. 1979, Philadelphia) lives and works in New York. The Whitney Museum of American Art in New York recently presented the first U.S. museum survey of Kline's work. His film *Adaptation* (2019-2022) recently screened at LAXART on the occasion of his first solo exhibition in Los Angeles. Kline's work has been exhibited internationally at Astrup Fearnley Museet, Oslo (2020); Fondazione Sandretto Re Rebaudengo, Turin, Italy (2016); Portland Art Museum, Oregon (2016); and Modern Art Oxford, UK (2015), among others. He has participated in group exhibitions including the Whitney Biennial, New York (2019); "New Order: Art and Technology in the Twenty- First Century," Museum of Modern Art, New York (2019); MoMA PS1, New York (2013, 2012); and "2015 Triennial: Surround Audience," New Museum, New York, among others. His work has also been exhibited at Walker Art Center, Minneapolis (2019); Yerba Buena Center for the Arts, San Francisco (2019, 2015); ICA Boston (2018); MOCA Cleveland (2018); The Hirshhorn Museum, Washington DC (2016); Moderna Museet, Stockholm (2016); Albright-Knox Art Gallery, Buffalo (2015); KW Institute for Contemporary Art, Berlin (2016); ICA Philadelphia (2014); and the Fridericianum, Kassel (2013). His work is included in the collections of numerous institutions including Whitney Museum of American Art, New York; Aïshti Foundation, Beirut, Lebanon; Museum of Modern Art, New York; Solomon R. Guggenheim Museum, New York; and the Rubell Family Collection, Miami.

## CV



JOSH KLINE

47 CANAL

291 Grand Street, 2nd Floor  
New York, NY 10002



*Keep The Change (Texas Roadhouse Waiter's Head with Cap), 2018*

3D-printed sculptures in plaster with inkjet ink and cyanoacrylate, custom tray, wooden stand  
40 × 32 × 32 in (101.60 × 81.28 × 81.28 cm)

Edition of 3 plus II AP

\$75,000

JOSH KLINE



47 CANAL  
291 Grand Street, 2nd Floor  
New York, NY 10002



*Keep The Change (Texas Roadhouse Waiter's Head with Cap), 2018 (detail)*



JOSH KLINE

47 CANAL  
291 Grand Street, 2nd Floor  
New York, NY 10002



*Keep The Change (Texas Roadhouse Waiter's Head with Cap), 2018 (detail)*



JOSH KLINE

47 CANAL  
291 Grand Street, 2nd Floor  
New York, NY 10002



*Reality Television 18*, 2023  
nylon flags, resin, epoxy, microfiber, mounting hardware  
28 x 48 ½ x 5 in (71.12 x 123.19 x 12.70 cm)  
\$75,000

JOSH KLINE

47 CANAL  
291 Grand Street, 2nd Floor  
New York, NY 10002



*Reality Television 18, 2023*



JOSH KLINE

47 CANAL  
291 Grand Street, 2nd Floor  
New York, NY 10002



JOSH KLINE

47 CANAL  
291 Grand Street, 2nd Floor  
New York, NY 10002

*Reality Television 18, 2023 (detail)*



JOSH KLINE

47 CANAL  
291 Grand Street, 2nd Floor  
New York, NY 10002



*Reality Television 19*, 2023  
nylon flags, resin, epoxy, microfiber, mounting hardware  
28 x 48 ½ x 5 in (71.12 x 123.19 x 12.70 cm)  
\$75,000



JOSH KLINE

47 CANAL  
291 Grand Street, 2nd Floor  
New York, NY 10002



JOSH KLINE

47 CANAL

291 Grand Street, 2nd Floor  
New York, NY 10002

*Reality Television 19, 2023*



**Trevor Shimizu** (b. 1978, California) lives and works in New York. He has had solo exhibitions at 47 Canal, New York; La Maison de Rendez-Vous, Brussels; the Institute of Contemporary Art, Philadelphia; Kunsthalle Lissabon, Portugal; Galerie Christine Mayer, Munich; The Green Gallery, Milwaukee; Misako & Rosen, Tokyo; the Rowhouse Project, Baltimore; and Kunsthall Charlottenborg, Copenhagen, among others. He has participated in group exhibitions at Stuart Shave Modern Art, London; White Columns, New York; the 2014 Whitney Biennial, New York; and the Queens Museum of Art, New York. Shimizu's work is also included in public collections such as the Whitney Museum of American Art, New York; Detroit Institute of Arts, Detroit; K11 Art Foundation, Hong Kong; and High Museum of Art, Atlanta. Shimizu is represented by 47 Canal, New York and Misako & Rosen, Tokyo.

## CV

TREVOR SHIMIZU

47 CANAL

291 Grand Street, 2nd Floor  
New York, NY 10002



*Marine Research Center, 2023*  
oil on canvas  
108 × 192 in (274.32 × 487.68 cm)  
\$150,000



**TREVOR SHIMIZU**

**47 CANAL**

291 Grand Street, 2nd Floor  
New York, NY 10002



*Marine Research Center, 2023*



TREVOR SHIMIZU

47 CANAL  
291 Grand Street, 2nd Floor  
New York, NY 10002

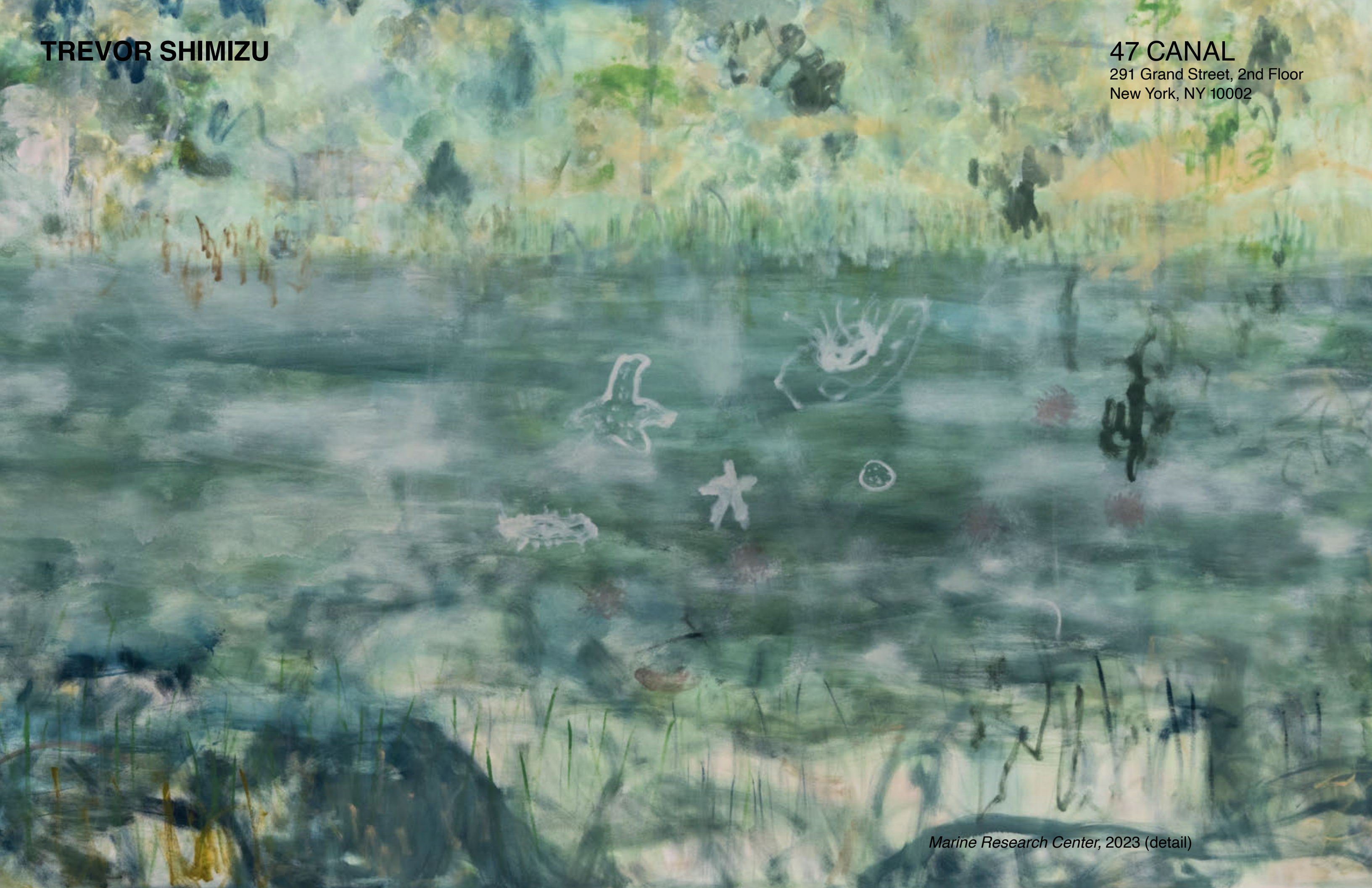


*Marine Research Center, 2023 (detail)*



TREVOR SHIMIZU

47 CANAL  
291 Grand Street, 2nd Floor  
New York, NY 10002



*Marine Research Center, 2023 (detail)*



TREVOR SHIMIZU

47 CANAL  
291 Grand Street, 2nd Floor  
New York, NY 10002



*Marine Research Center, 2023 (detail)*



TREVOR SHIMIZU

47 CANAL  
291 Grand Street, 2nd Floor  
New York, NY 10002



*June 2023 (Hudson River) (2), 2023*  
oil on canvas  
19 ½ x 22 in (49.53 x 55.88 cm)  
20.88 x 22.38 in (53.02 x 56.83 cm) (framed)  
\$20,000



TREVOR SHIMIZU

47 CANAL  
291 Grand Street, 2nd Floor  
New York, NY 10002



*June 2023 (Hudson River) (1), 2023*  
oil on canvas  
40 × 33 in (101.60 × 83.82 cm)  
41.38 × 34.38 × 2 in (105.09 × 87.31 × 5.08 cm) (framed)  
\$32,000



**TREVOR SHIMIZU**

**47 CANAL**  
291 Grand Street, 2nd Floor  
New York, NY 10002



*June 2023 (Hudson River) (1), 2023 (detail)*



TREVOR SHIMIZU

47 CANAL  
291 Grand Street, 2nd Floor  
New York, NY 10002



*Caterpillar*, 2023  
oil on canvas  
7 × 11 in (17.78 × 27.94 cm)  
7.88 × 11.88 × 2 in (20.00 × 30.16 × 5.08 cm) (framed)  
\$9,000



TREVOR SHIMIZU

47 CANAL

291 Grand Street, 2nd Floor  
New York, NY 10002



*Early Spring 2023 (Hudson River) (1), 2023*

oil on canvas

8 × 12 in (20.32 × 30.48 cm)

8.88 × 12.88 × 2 in (22.54 × 32.70 × 5.08 cm) (framed)

\$9,000



TREVOR SHIMIZU

47 CANAL  
291 Grand Street, 2nd Floor  
New York, NY 10002

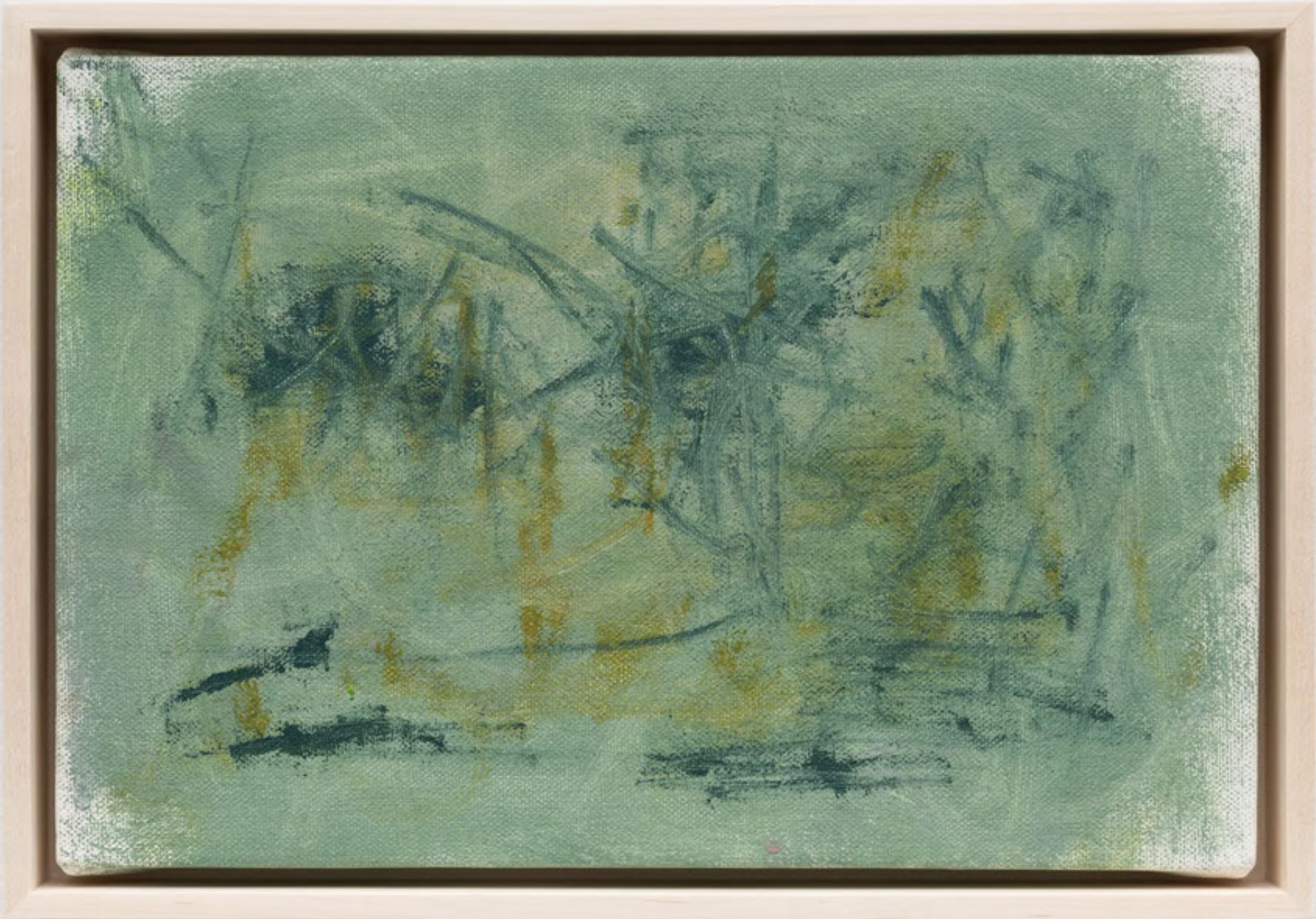


*Early Spring 2023 (Hudson River) (2), 2023*  
oil on canvas  
8 × 14 in (20.32 × 35.56 cm)  
8.88 × 14.88 × 2 in (22.54 × 37.78 × 5.08 cm) (framed)  
\$9,000



TREVOR SHIMIZU

47 CANAL  
291 Grand Street, 2nd Floor  
New York, NY 10002

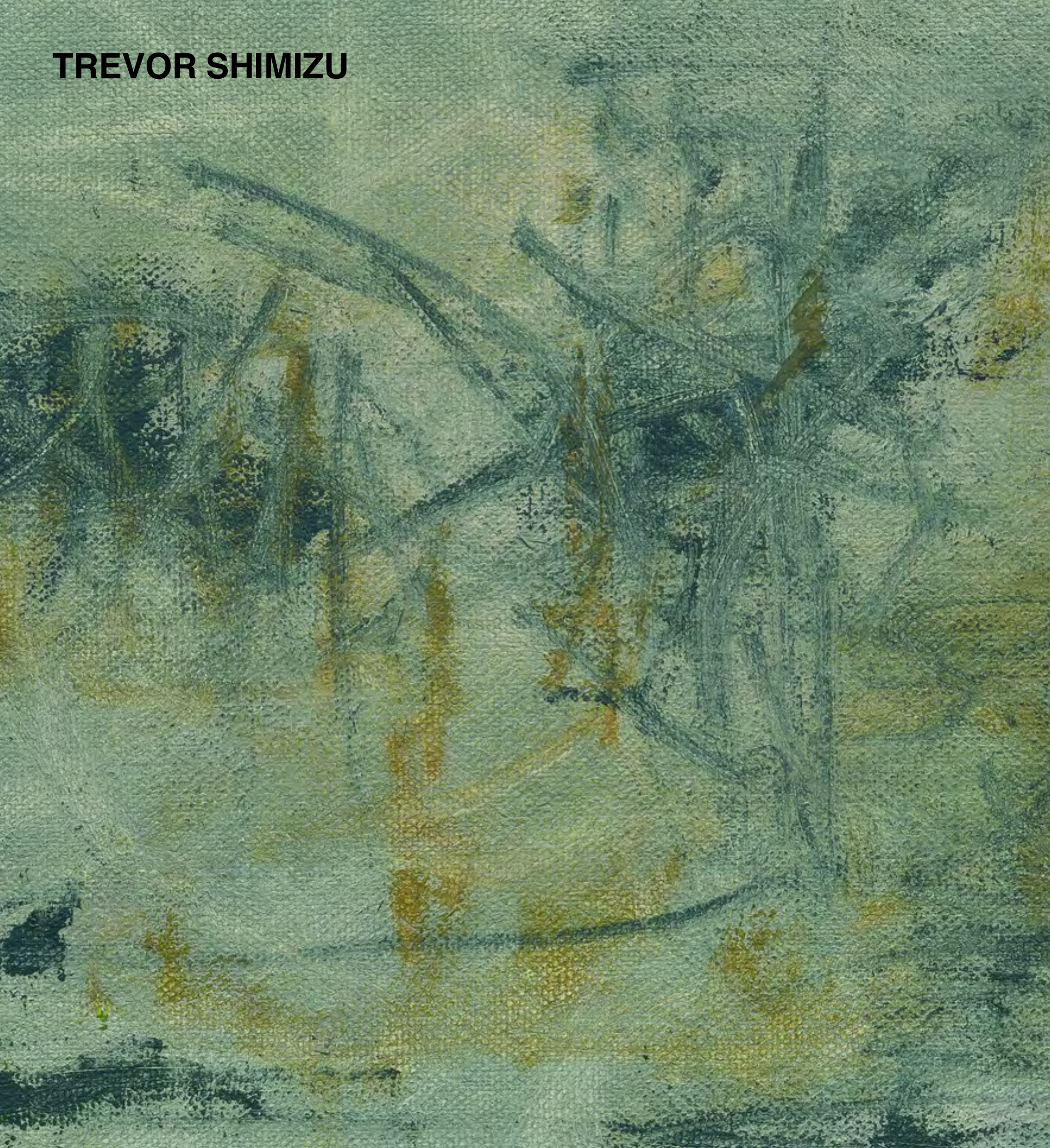


*Early Spring 2023 (Hudson River) (3), 2023*  
oil on canvas  
7 × 10 in (17.78 × 25.40 cm)  
7.88 × 10.88 × 2 in (20.00 × 27.62 × 5.08 cm) (framed)  
\$9,000



**TREVOR SHIMIZU**

**47 CANAL**  
291 Grand Street, 2nd Floor  
New York, NY 10002



*Early Spring 2023 (Hudson River) (3), 2023*



TREVOR SHIMIZU

47 CANAL  
291 Grand Street, 2nd Floor  
New York, NY 10002



*Hinoki Cypress (Sunrise)*, 2021-2023  
oil on canvas  
20 × 20 in (50.80 × 50.80 cm)  
21.38 × 21.38 in (54.29 × 54.29 cm) (framed)  
\$18,000



TREVOR SHIMIZU

47 CANAL  
291 Grand Street, 2nd Floor  
New York, NY 10002



*Chestnut and Oak*, 2023  
oil on canvas  
11 × 16 in (27.94 × 40.64 cm)  
11.88 × 16.88 × 2 in (30.16 × 42.86 × 5.08 cm) (framed)  
\$12,000



TREVOR SHIMIZU

47 CANAL

291 Grand Street, 2nd Floor  
New York, NY 10002



*Spring Evening 2023, 2023*

oil on canvas

33 × 40 in (83.82 × 101.60 cm)

34.38 × 41.38 × 2 in (87.31 × 105.09 × 5.08 cm) (framed)

\$32,000



TREVOR SHIMIZU



47 CANAL  
291 Grand Street, 2nd Floor  
New York, NY 10002



*Spring Evening 2023, 2023*



TREVOR SHIMIZU

47 CANAL  
291 Grand Street, 2nd Floor  
New York, NY 10002



*Poison Ivy Vine*, 2022  
oil on canvas  
16 × 11 in (40.64 × 27.94 cm)  
16.88 × 11.88 × 2 in (42.86 × 30.16 × 5.08 cm) (framed)  
\$12,000



TREVOR SHIMIZU

47 CANAL

291 Grand Street, 2nd Floor  
New York, NY 10002



*Two Apple Trees, 2022*

oil on canvas

20.63 × 20 ¼ in (52.39 × 51.44 cm)

22 × 22.63 in (55.88 × 57.47 cm) (framed)

\$18,000



TREVOR SHIMIZU

47 CANAL

291 Grand Street, 2nd Floor  
New York, NY 10002



*Summer-Fall 2023, 2023*

oil on canvas

25 x 32 in (63.50 x 81.28 cm)

\$25,000



TREVOR SHIMIZU

47 CANAL  
291 Grand Street, 2nd Floor  
New York, NY 10002



*Marsh 2022, 2022*  
oil on canvas  
26 × 43 in (66.04 × 109.22 cm)  
27.38 × 44.38 in (69.53 × 112.71 cm) (framed)  
\$32,000



TREVOR SHIMIZU

47 CANAL  
291 Grand Street, 2nd Floor  
New York, NY 10002



*Marsh 2022, 2022*



**TREVOR SHIMIZU**

**47 CANAL**  
291 Grand Street, 2nd Floor  
New York, NY 10002



*Marsh 2022, 2022 (detail)*



# NOLAN SIMON

## 47 CANAL

291 Grand Street, 2nd Floor  
New York, NY 10002

**Nolan Simon** (b. 1980) has shown extensively in Europe and the United States. Recent solo exhibitions include: 47 Canal, New York (2021,2019); What Pipeline, Detroit, MI (2017); Lars Friedrich, Berlin (2016); and Green Gallery East, Milwaukee, WI (2015). Recent group exhibitions include: Lisson Gallery, New York (2019); Greene Naftali, New York (2019); Marlborough Chelsea, New York (2016); and Lucas Hirsch, Düsseldorf, Germany (2016).

### CV



NOLAN SIMON

47 CANAL

291 Grand Street, 2nd Floor  
New York, NY 10002



*Soft Reins, First Tools, 2023*  
oil and dye sublimation on linen mounted on board  
19 x 15 in (48.26 x 38.10 cm)  
20 ½ x 16.38 in (52.07 x 41.59 cm) (framed)  
\$14,000



NOLAN SIMON

47 CANAL  
291 Grand Street, 2nd Floor  
New York, NY 10002



*Soft Reins, First Tools, 2023 (detail)*



NOLAN SIMON

47 CANAL

291 Grand Street, 2nd Floor  
New York, NY 10002



*The Soft Tread of Silicone Heels, 2023*  
oil and dye sublimation on linen mounted on board  
19 x 15 in (48.26 x 38.10 cm)  
20 ½ x 16.38 in (52.07 x 41.59 cm) (framed)  
\$14,000



NOLAN SIMON

47 CANAL  
291 Grand Street, 2nd Floor  
New York, NY 10002



*The Soft Tread of Silicone Heels, 2023 (detail)*



NOLAN SIMON

47 CANAL

291 Grand Street, 2nd Floor  
New York, NY 10002



*Soft Reins, Spring in Wartime, 2023*

oil, ink, and dye sublimation on linen mounted on board

19 × 15 in (48.26 × 38.10 cm)

20 ½ × 16.38 in (52.07 × 41.59 cm) (framed)

\$14,000



NOLAN SIMON

47 CANAL  
291 Grand Street, 2nd Floor  
New York, NY 10002



*Soft Reins, Spring in Wartime, 2023 (detail)*



NOLAN SIMON

47 CANAL

291 Grand Street, 2nd Floor  
New York, NY 10002



*Soft Reins, Man Kind, 2023*  
oil and dye sublimation on linen mounted on board  
19 x 15 in (48.26 x 38.10 cm)  
20 ½ x 16.38 in (52.07 x 41.59 cm) (framed)  
\$14,000



NOLAN SIMON

47 CANAL  
291 Grand Street, 2nd Floor  
New York, NY 10002



*Soft Reins, Man Kind, 2023 (detail)*



**Anicka Yi** (b. 1971, Seoul, South Korea) lives and works in New York City. A survey of her work was recently on view at the Pirelli Hangar Bicocca in Milan, Italy. She has had solo exhibitions in leading international institutions including the recent Hyundai Commission, Turbine Hall, Tate Modern, London (2021); Solomon R. Guggenheim Museum, New York (2017); Fridericianum, Kassel (2016); Kunsthalle Basel, MIT List Visual Arts Center, Cambridge (2015); The Kitchen, New York (2015); and Cleveland Museum of Art (2014). She has participated in group exhibitions including the Venice Biennale (2019); Whitney Biennial, New York (2017); Okayama Art Summit (2016); Gwangju Biennale (2016); Taipei Biennial (2014); and Biennale de Lyon (2013). Awards include Guggenheim Hugo Boss Prize (2016) and The Louis Comfort Tiffany Foundation Award (2011). Her work is included in collections of numerous institutions including Foundation d'entreprise Galeries Lafayette, Paris; Julia Stoschek Collection, Düsseldorf; the Los Angeles County Museum of Art; Museum of Modern Art, New York; the Solomon R. Guggenheim Museum, New York; Foundation Louis Vuitton, Paris; The Rubell Family Collection, Miami; Aïshti Foundation, Beirut; and the Whitney Museum of American Art, New York, among others.

In 2019, the artist launched “Biography Fragrance,” a line of three fragrances in limited edition in collaboration with Barnabé Fillion, at Dover Street Market.

## CV



ANICKA YI

47 CANAL  
291 Grand Street, 2nd Floor  
New York, NY 10002



*KñŁMŖR*, 2023  
acrylic, UV print, aluminum artist's frame  
67 ¼ x 55 ¼ x 1 ½ in (170.82 x 140.34 x 3.81 cm)  
\$175,000



ANICKA YI



47 CANAL  
291 Grand Street, 2nd Floor  
New York, NY 10002



*KñŁMŞ†R, 2023 (detail)*



# ART BASEL MIAMI BEACH 2023

**47 CANAL**  
291 Grand Street, 2nd Floor  
New York, NY 10002

For more information, please contact:

Jamie Kenyon  
[jamie@47canal.us](mailto:jamie@47canal.us)

Jasmine Lee  
[jasmine@47canal.us](mailto:jasmine@47canal.us)

Oliver Newton  
[oliver@47canal.us](mailto:oliver@47canal.us)