

HELLY NAHMAD GALLERY

Art | Basel
Basel



PABLO PICASSO (1881 – 1973)

Nature Morte à la Bougie, 1944

Oil on canvas

24 5/8 x 36 1/8 in. (63.2 x 91.7 cm.)

FRANCIS BACON (1909 – 1992)
Study of a Man Talking, 1981
Oil and dry transfer lettering on canvas
78 x 58 in. (198 x 147.5 cm.)





ALEXANDER CALDER (1898 – 1976)

Gouvernails Rouges, 1967

Sheet metal, iron bars and paint

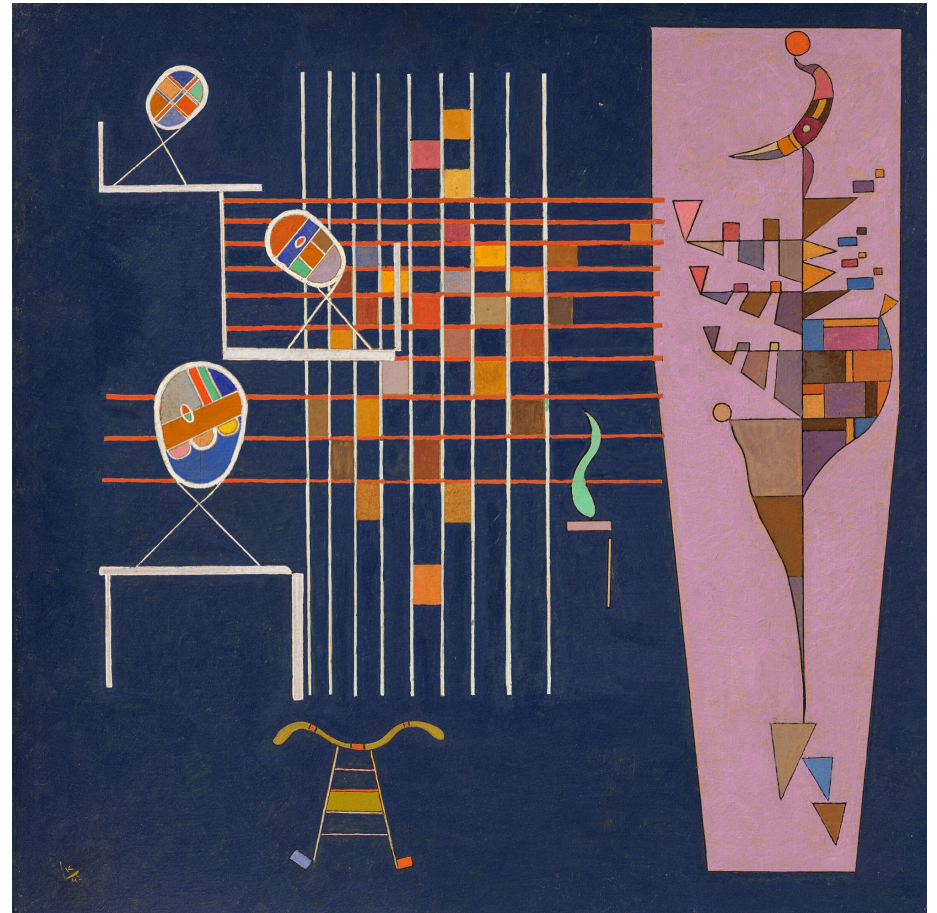
92 x 67 x 40 in. (233.7 x 170.2 x 101.6 cm.)

WASSILY KANDINSKY (1866 – 1944)

Trois Ovals, 1942

Oil and tempera on canvas

19 1/4 x 19 1/8 in. (49 x 48.7 cm.)





GIORGIO DE CHIRICO (1880 – 1978)

Le Muse Inquietanti, late 1950s

Oil on canvas

38.2 x 26 in. (97 x 66 cm.)

JEAN DUBUFFET (1901 - 1985)

Bertelé Mondain, 1946

Oil on canvas

51 1/8 x 38 in. (130 x 96.5 cm.)





GIORGIO MORANDI (1890 – 1964)

Natura Morta, 1950

Oil on canvas

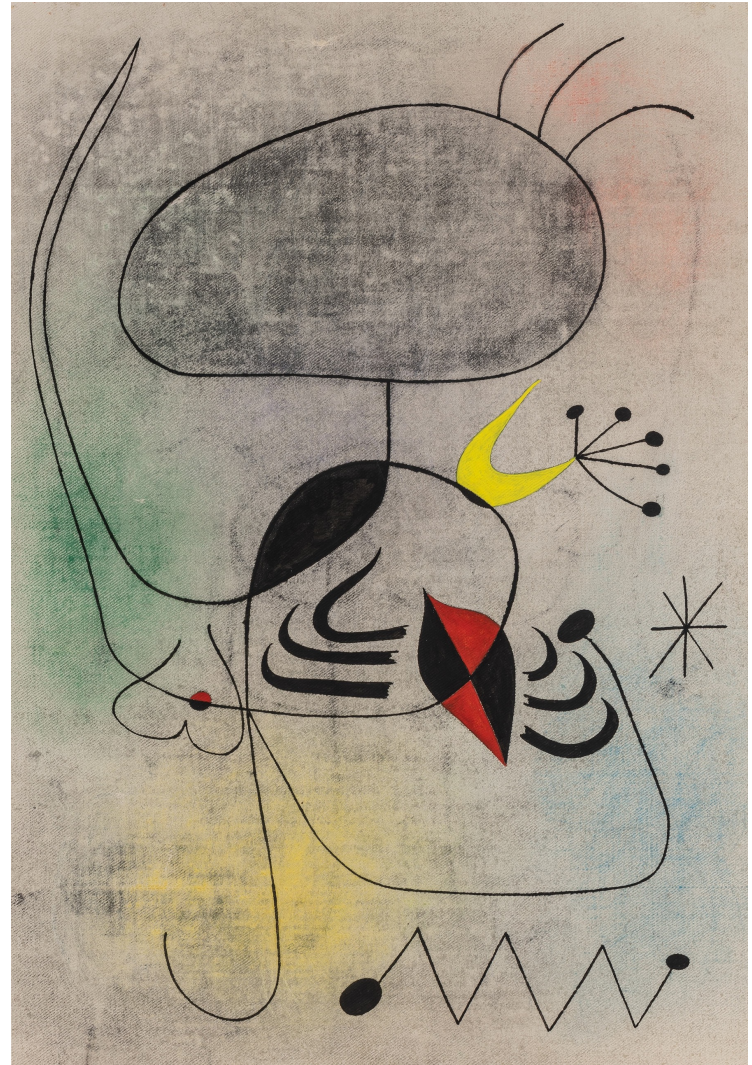
8 3/4 x 13 7/8 in. (22.2 x 35.2 cm.)

JOAN MIRÓ (1893 - 1983)

Femme dans la Nuit, 1944

Oil and pastel on unstretched canvas

19 1/2 x 15 in. (49.5 x 38 cm.)





HENRI MATISSE (1869 – 1954)

Femme à l'Ombrelle Verte, 1919

Oil on canvas board

16 1/8 x 13 in. (40.8 x 33 cm.)