

# Alice Baber



**Luxembourg + Co.**

4 October - 7 December 2024

2 Savile Row

London W1S 3PA

**Frieze Masters | Booth D3**

9-13 October

The Regent's Park

London NW1 4HG

**LUXEMBOURG + CO.**

*@Alice Baber  
1781*



Portrait of Alice Baber. Photo: Thomas Victor

# Alice Baber

## Luxembourg + Co.

4 October – 7 December 2024

2 Savile Row

London, W1S 3PA

## Frieze Masters Booth D3

9–13 October

The Regent's Park

London, NW1 4HG

On Friday 4<sup>th</sup> October 2024, Luxembourg + Co., London, will open an exhibition of works by the American artist Alice Baber (1928-1982). The display will extend also to the gallery's stand at Frieze Masters (Stand D3, 9-13 October).

Baber is best known for her long-life dedication to study biomorphic forms and the infinite possibilities of light and colour through painting. Showcasing a selection of significant achievements from throughout her career, the works on view span from 1964 to just a year before her untimely death in 1981, and chronicle her experimentation between different mediums, intensities of colour, saturation, composition, and forms.

Among these, the display will include examples of Baber's unique method of 'sinking' (or 'staining') and 'lifting' tissue papers dipped in watercolour in order to obtain a sense of organic-like expansion in her shapes; an attribute that is now regarded as her signature style.

**LUXEMBOURG + CO.**





Alice Baber was often associated with American Abstract Expressionism as well as with Colour Field painting, although her work does not fall neatly under either one of these artistic categories. Baber's unique approach to watercolours and oils is characterized by colourful biomorphic forms, expressing rhythm, movement, and the intricate interplay of colour transparencies on paper and canvas. Baber championed a synesthetic approach to colour, considering painting as a practice that evokes more than just visual experience, but also one that relates to taste, touch, smell and memories: *'When I first conceive of a painting', she once explained, 'I must feel it, I hear it, I taste it, and I want to eat it.'*

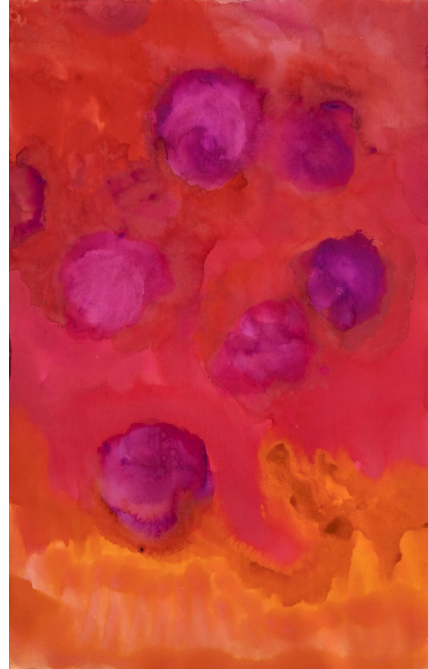
An active feminist, Baber participated in several exhibitions dedicated to women artists, notably Women Choose Women, held at the New York Cultural Center in 1972, curated by Lucy Lippard. Throughout her career, Baber participated in numerous institutional group shows, including at the Corcoran Art Gallery, Washington, D.C. (1972), and Whitechapel Gallery, London (1966). Today, she is represented in over 40 public institutions around the world, with works in major museums such as the Metropolitan Museum of Art, the Solomon R. Guggenheim Museum, the Whitney Museum of American Art, the Museum of Modern Art, New York, the Albertina Museum, Vienna and the Stedelijk Museum, Amsterdam.

We wish to thank the Alice Baber Project for their collaboration, all the works presented here are registered with the online Alice Baber Project at [www.alicebaber.com](http://www.alicebaber.com).

LUXEMBOURG + CO.



**ALICE BABER** (1928-1982)  
*Untitled*, 1959  
Watercolor on paper  
17 7/8 x 11 3/4 in. (45.4 x 30 cm)  
*On view at the gallery*



**ALICE BABER** (1928-1982)  
*Untitled*, 1960  
Watercolor on paper  
19 3/4 x 12 5/8 in. (50 x 32.2 cm)  
*On view at the gallery*

LUXEMBOURG + CO.



**ALICE BABER** (1928-1982)

*Untitled*, 1960

oil on canvas

40 x 30 in. (101.6 x 76.2 cm)

*On view at Frieze Masters*

LUXEMBOURG + CO.



**ALICE BABER** (1928-1982)  
*Untitled*, 1960  
oil on canvas  
32 1/4 x 21 1/4 in. (82 x 54 cm)  
*On view at the gallery*



LUXEMBOURG + CO.



**ALICE BABER** (1928-1982)

*Untitled*, 1961

oil on canvas

62 1/4 x 37 3/8 in. (158 x 95 cm)

*On view at Frieze Masters*





LUXEMBOURG + CO.



**ALICE BABER** (1928-1982)

*Between the Bridges*, 1964

Watercolour on paper

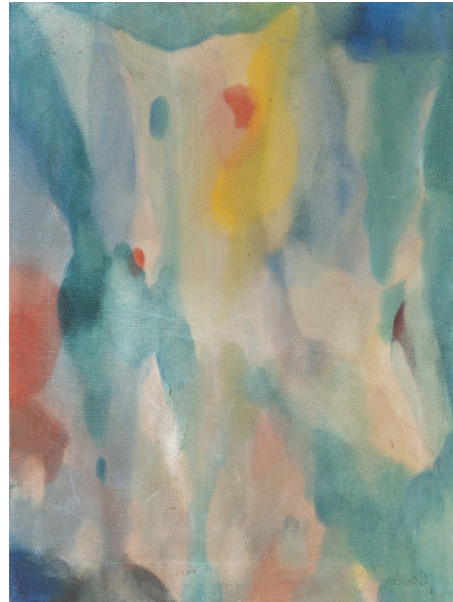
11 x 10 in (27.9 x 25.4 cm)

*On view at Frieze Masters*

LUXEMBOURG + CO.



**ALICE BABER** (1928-1982)  
*That Way*, 1964  
Oil on canvas  
18 1/2 x 15 1/2 in. (47 x 39.5 cm)  
*On view at Frieze Masters*



**ALICE BABER** (1928-1982)  
*Many Ver. 5*, 1964  
Oil on canvas  
24 x 18 in. (61 x 45.7 cm)  
*On view at Frieze Masters*







LUXEMBOURG + CO.



**ALICE BABER** (1928-1982)

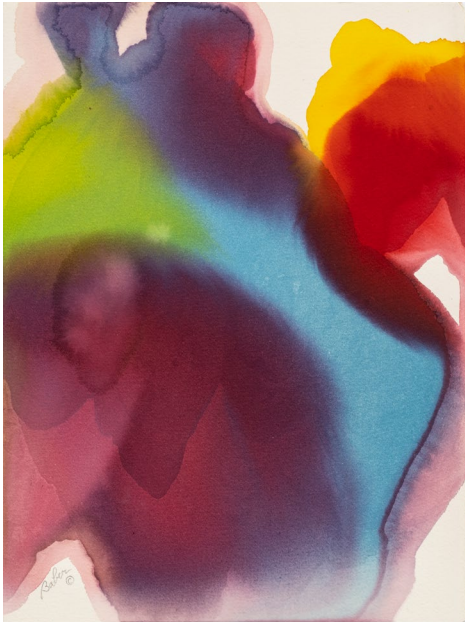
*Pale of the Morning*, 1975

Oil on canvas

25 x 20 in. (63,5 x 50,8 cm)

*On view at the gallery*

LUXEMBOURG + CO.



**ALICE BABER** (1928-1982)  
*Hidden Jaguar*, 1976  
Watercolour on paper  
15 x 11 in (38.1 x 27.9 cm)  
*On view at Frieze Masters*



**ALICE BABER** (1928-1982)  
*Center of the Eye*, 1976  
Watercolour on paper  
14 x 11 in (35.6 x 27.9 cm)  
*On view at Frieze Masters*

LUXEMBOURG + CO.



**ALICE BABER** (1928-1982)  
*Songs of the Wind*, 1977  
Oil on canvas  
59 x 78 in (149.9 x 198.1 cm)  
*On view at Frieze Masters*



LUXEMBOURG + CO.



**ALICE BABER** (1928-1982)  
*The Mask of the Jaguar of the Mountain,*  
1977  
Oil on canvas  
58 x 77 in. (147.3 x 195.6 cm)  
*On view at the gallery*



LUXEMBOURG + CO.



**ALICE BABER** (1928-1982)

*Turn and Sound*, 1977

On canvas

20 x 25 in (50.8 x 63.5 cm)

*On view at Frieze Masters*



LUXEMBOURG + CO.



**ALICE BABER** (1928-1982)  
*Map for the Treasure of the Jaguar*, 1978  
Watercolour on Arches paper  
23 x 30 in. (58.4 x 76.2 cm)  
*On view at the gallery*

LUXEMBOURG + CO.



**ALICE BABER** (1928-1982)  
*The Path of the Blue Jaguar*, 1977  
Watercolour on Arches paper  
30 x 41 in. (76.2 x 104.1 cm)  
*On view at the gallery*

LUXEMBOURG + CO.



**ALICE BABER** (1928-1982)  
*The Red Dawn of the Jaguar*, 1979-80  
Watercolour on Arches paper  
30 x 41 in. (76.2 x 104.1 cm)  
*On view at the gallery*





LUXEMBOURG + CO.



**ALICE BABER** (1928-1982)  
*The Blue Maypole of the Jaguar*, 1980  
Oil on canvas  
58 x 68 in. (147.3 x 172.7 cm)  
*On view at Frieze Masters*

LUXEMBOURG + CO.



**ALICE BABER** (1928-1982)  
*The Mountain of the Desert Jaguar*, 1980  
Watercolour on Arches paper  
30 x 41 in. (76.2 x 104.1 cm)  
*On view at Frieze Masters*



LUXEMBOURG + CO.



**ALICE BABER** (1928-1982)  
*The Wind Shifts Above the Plain of the Jaguar*, 1980  
Watercolour on Arches paper  
30 x 41 in. (76.2 x 104.1 cm)  
*On view at the gallery*



LUXEMBOURG + CO.



**ALICE BABER** (1928-1982)  
*The Royal Space for the Jaguar*, 1980  
Watercolour on Arches paper  
30 x 41 in. (76.2 x 104.1 cm)  
*On view at Frieze Masters*



LUXEMBOURG + CO.



**ALICE BABER** (1928-1982)  
*The Center of the Tree of the Jaguar*, 1980  
Watercolour on Arches paper  
30 x 41 in. (76.2 x 104.1 cm)  
*On view at the gallery*



*© Alice  
Raben  
1980*

LUXEMBOURG + CO.



**ALICE BABER** (1928-1982)  
*Clouds Lift from the Jaguars Mountain*, 1980  
Watercolour on Arches paper  
30 x 41 in. (76.2 x 104.1 cm)  
*On view at Frieze Masters*



LUXEMBOURG + CO.



**ALICE BABER** (1928-1982)  
*The Golden Jaguar in the Garden*, 1981  
Oil on canvas  
30 x 50 in. (76.2 x 127 cm)  
*On view at Frieze Masters*



LUXEMBOURG + CO.



**ALICE BABER** (1928-1982)  
*The Golden Circle of the Jaguar*, 1981  
Oil on canvas  
40 1/2 x 66 1/2 in. (102.9 x 168.9 cm)  
*On view at the gallery*



LUXEMBOURG + CO.



**ALICE BABER** (1928-1982)  
*The Silver Ring of the Jaguar*, 1981  
Watercolour on Arches paper  
30 x 41 in. (76.2 x 104.1 cm)  
*On view at Frieze Masters*

LUXEMBOURG + CO.



**ALICE BABER** (1928-1982)  
*The Yellow Song of the Jaguar*, 1981  
Watercolour on Arches paper  
30 x 41 in. (76.2 x 104.1 cm)  
*On view at the gallery*



**LONDON**  
2, Savile Row  
London W1S 3PA  
Tel. +44 20 7734 1266  
[london@luxembourgco.com](mailto:london@luxembourgco.com)

**NEW YORK**  
Fuller Building, 6th Floor  
595 Madison Avenue,  
New York, NY 10022  
Tel. +1 212 452 4646  
[info@luxembourgco.com](mailto:info@luxembourgco.com)

**LUXEMBOURG + CO.**

*© 2010*